

Venue

Chengdu, the capital of Sichuan Province in southwestern China, is famed for being the home of cute giant pandas. Located in the west of Sichuan Basin and the center of Chengdu Plain, it has been the economic and cultural center of China's most populous province since 400 BC. Benefiting from Dujiangyan Irrigation Project which was constructed in 256 B.C., Sichuan Province is reputed as the Heavenly State, Tian Fu Zhi Guo in Chinese, literally a place richly endowed with natural resources. There are many famous scenic spots such as Kuanzhai Street, Jinli, Tianfu Square and Chengdu Panda Base. The delicate face-changing in Sichuan Opera has become a symbol of Sichuan culture.

The Venue of the Conference is Crowne Plaza Chengdu Wuhou. The hotel is located in No. 2 Chaoyin Road, Wuhou District, Chengdu City, which is 100m away from two metro exits of Metro Linse 9 and 17, with a 20-min driving radius to downtown, about 12 km from Chengdu East Railway Station and 13 km away from Shuangliu International Airport.



Contact

Haili Liao	hliao@swjtu.edu.cn
Mingshui Li	lms_rcwe@swjtu.edu.cn
Cunming Ma	mcm@swjtu.edu.cn
Zhiguo Li	lizhiguo@swjtu.edu.cn
Qiang Zhou	qzhou85@swjtu.edu.cn



西南交通大学
Southwest Jiaotong University

The 10th Asia-Pacific Conference on Wind Engineering(APCWE10)

August 15-19, 2025 | Chengdu, China
<http://www.apcwe2025.cn>

Co-organized by

Southwest Jiaotong University
Wind Engineering Key Laboratory of Sichuan Province
Wind Engineering Group, China Civil Engineering Society

In cooperation with

International Association for Wind Engineering (IAWE)



Introduction and Scope

The legacy of Asia-Pacific Conference on Wind Engineering starts with the first event held at Roorkee/India, moving on to Beijing/China, Hong Kong/China, Gold Coast/Australia, Tokyo/Japan, Seoul/Korea, Taipei/China, Chennai/India and Auckland/New Zealand. The APCWE conference is an international event regularly convened every four years under the umbrella of International Association for Wind Engineering (IAWE), and attended by wind engineering researchers and practitioners mainly from Asia and Pacific regions. Outcome of these conferences has led to fine tuning of the standards and wind engineering-related codes, policy changes and, as a whole, expanded the vistas of knowledge in the field of wind engineering. APCWE10 is intended to gather researchers and engineering consultants who will share the latest results of research and successful case studies in which wind is a relevant engineering and design phenomenon. The field ranges from applied meteorology, fluid dynamics, wind energy, civil engineering and city planning to design of cladding and roofing.

Official Language

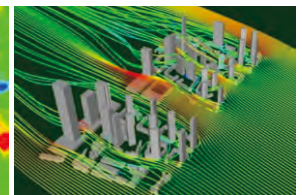
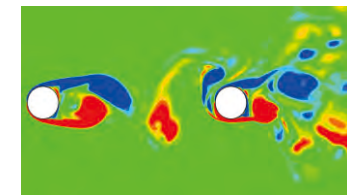
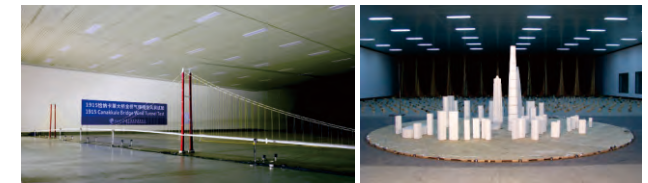
The official language of the conference is English.

Conference Themes

- Aerodynamics: including buildings, bridges, cables, vehicles and sports
- Codifications, norms and standards
- Field measurements and wind tunnel techniques
- Computational fluid dynamics
- Wind characteristics
- Environmental dispersion and pollution
- Indoor air quality and ventilation
- Wind hazard assessment
- Wind energy and applications
- Wind loads on structures
- Wind-structure interaction
- Wind-induced human comfort
- Instrumentation and control
- Meteorological phenomena
- Case studies
- AI in wind engineering
- Any other topics of relevance

Key Dates (Tentative)

2-page extended abstract due	December 15, 2024
Notification of acceptance	March 1, 2025
Full paper due	April 15, 2025
Notification of acceptance	May 31, 2025
Early registration due	June 15, 2025
APCWE10	August 15-19, 2025



Local Organizing Committee

Chairman: Haili Liao (Southwest Jiaotong University)
Co-Chairman: Mingshui Li (Southwest Jiaotong University)
Secretary: Cunming Ma (Southwest Jiaotong University)
Zhiguo Li (Southwest Jiaotong University)
Qiang Zhou (Southwest Jiaotong University)
Members: to be organized