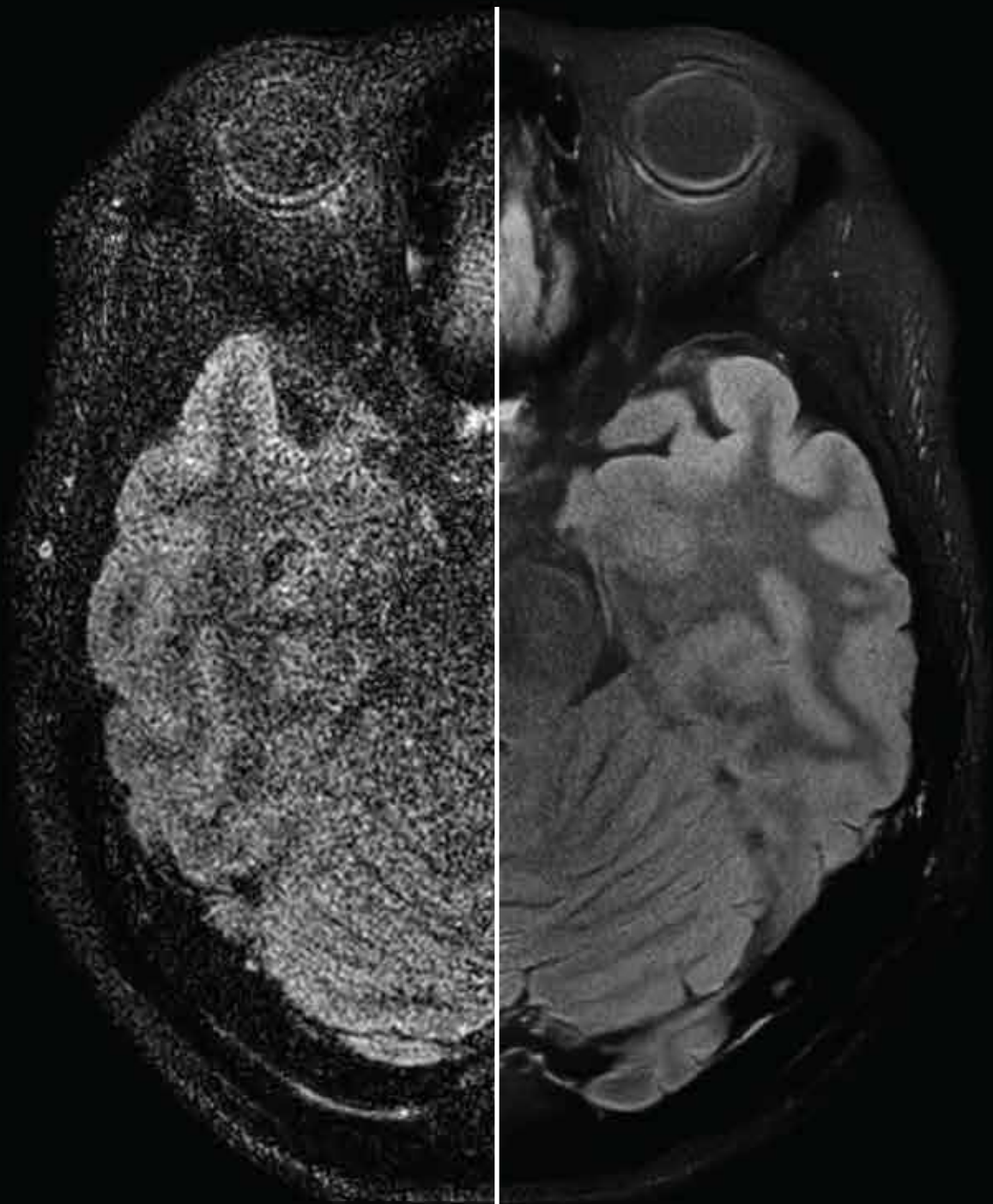


SwiftMR™

AI-Powered MRI Enhancement Solution
Faster Imaging, Exceptional Quality




Introducing SwiftMR™

The Next Generation MRI Enhancement Software

SwiftMR™ is a transformative solution that enables MRI scan time reduction, enhancing patient comfort without sacrificing image quality. Developed with a cutting-edge deep learning model, SwiftMR™ is designed to integrate seamlessly with existing MRI systems.


Enhanced Efficiency

Proven to enable scan time reduction by up to 50%*, significantly boosting patient throughput.



Exceptional Image Quality

Enhances image quality, making scans from even legacy systems clearer and more detailed.



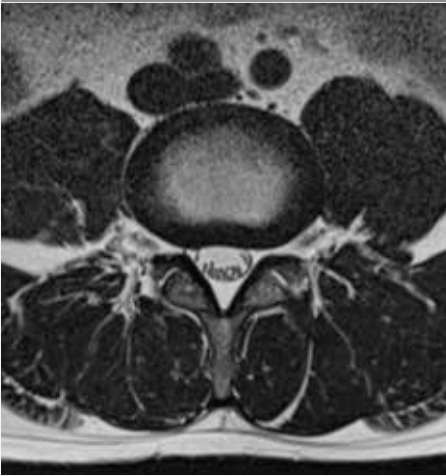

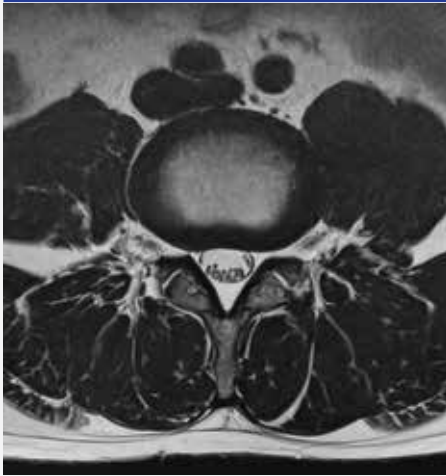
Comprehensive Coverage







FDA-510(k)-cleared for all body parts and sequences, and compatible with all manufacturers



How SwiftMR™ works

Our team will optimize MRI protocols to accelerate scans, initially producing faster yet noisy and blurry images. **SwiftMR™'s deep learning model is then employed to enhance the accelerated scans**, effectively transforming them into high-quality images.

Conventional Scan	Accelerated Scan	Accelerated Scan + SwiftMR™
		
30 mins	15 mins	15 mins

 USA	 Canada	 Japan	 Europe	 Korea
FDA 510(k)-cleared Class II	Health Canada-approved Class II	PDMA-approved Class II	 Class IIa, MDR	KOREA MFDS approved Class 1
Quality Management System			Information Security	
ISO 13485:2016 / EN ISO 13485:2016 certified GMP, MDSAP certified			HIPAA-compliant, GDPR-compliant ISO 27001, 27017, 27018 certified	

* For investigational purposes in countries outside of the United States, South Korea, Canada, Brazil, Japan, Taiwan, Malaysia, Saudi Arabia, UAE, Thailand, Vietnam, Indonesia, and Israel. FDA 510(k)-cleared to support images with scan time reduction by up to 50% in the United States.

SwiftMR™ Delivers Real Results:

Boost your Productivity and Efficiency

SwiftMR™ enables radiology practices to achieve a new level of productivity and efficiency with MRI scans. Reducing MRI scan time increases patient throughput, unlocking opportunities for revenue growth through increased MRI utilization.

With SwiftMR™, GK Medical in Illinois achieved
37% more scans with **40%** shorter scan time*

Scan time changes

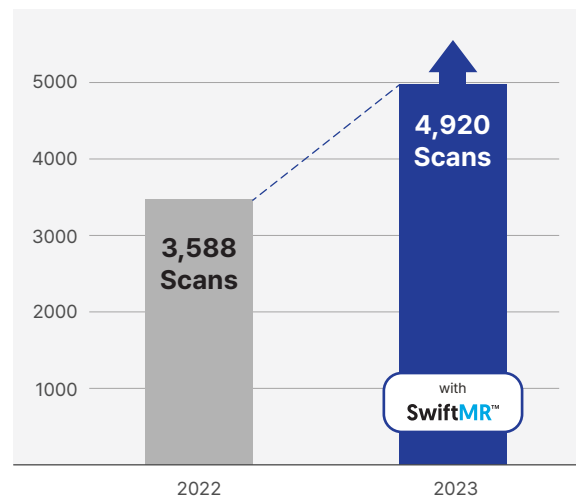
Avg. **40%** scan time reduction

Body part	Scan time (Before)	Scan time (After)	Reduction
Prostate	39:17	21:17	49%
C-spine	23:13	13:41	41%
L-spine	18:47	12:03	36%
Brain	37:04	25:01	33%

*Results on Siemens Trio 3T

MRI scan volume

37% scan volume increase



SwiftMR™ 's Comprehensive Coverage**

What sets us apart is our thoughtful approach to designing products for radiology practices. Our products cater to a diverse range of needs, providing comprehensive coverage.



Ages
All ages



Body parts
All body parts



Field strength
3.0T or lower



Pulse sequence
All pulse sequences



Manufacturers
All MRI manufacturers

* Numbers based on data from a single location and individual results may vary

** Supported body parts, pulse sequence, field strength, patient population and MRI manufacturers may vary by country

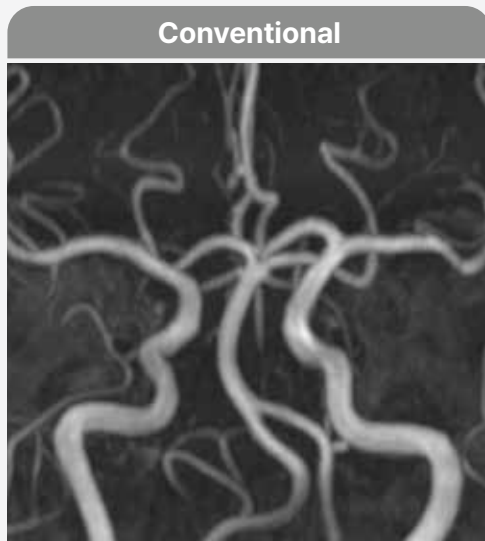
SwiftMR™ Enables Faster Scans

SwiftMR™ enables scan time reduction by up to 50%*, while preserving image quality.

Brain MRA

1.5T
Philips
Ingenia

3D TOF
Ⓐ 0.6×0.8×1.2 mm
Ⓑ 0.6×0.8×1.2 mm
MIP



Scan time 04:42

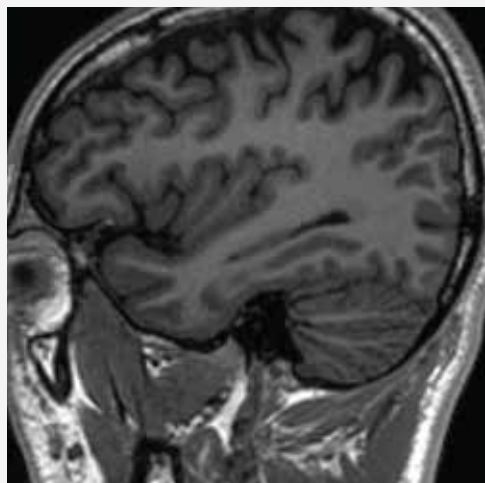


Scan time 02:28

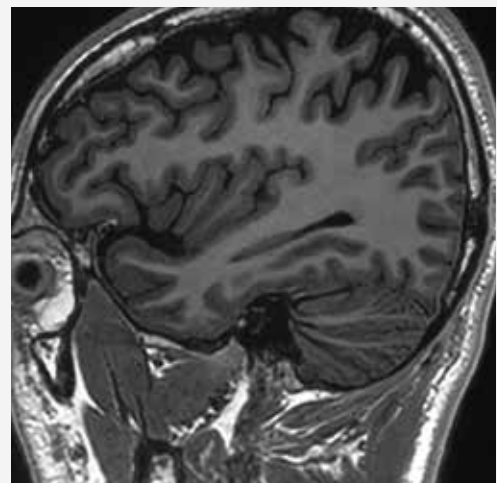
Brain T1WI

3.0T
GE
Discovery MR750w

3D BRAVO
Ⓐ 1.0×1.0×1.0 mm
Ⓑ 1.0×1.0×1.0 mm



Scan time 04:11

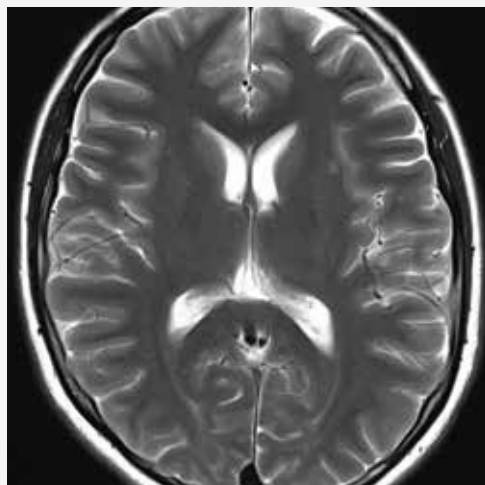


Scan time 01:55

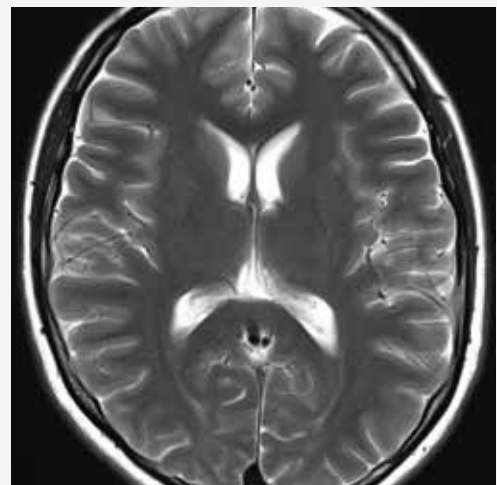
Brain T2WI

3.0T
Siemens
MAGNETOM Skyra

2D TSE
Ⓐ 0.4×0.4×5.0 mm
Ⓑ 0.4×0.4×5.0 mm



Scan time 02:22



Scan time 01:09

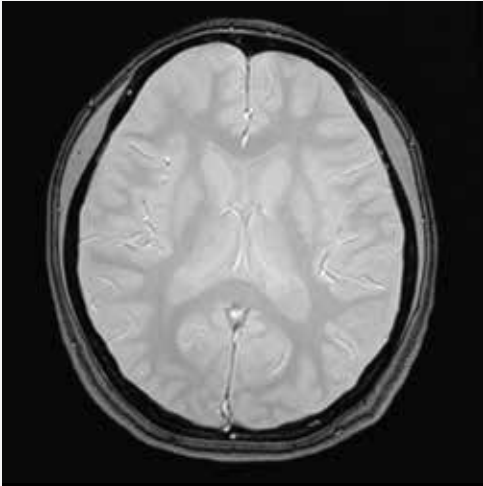
* FDA 510(k)-cleared to support MR images for all body parts with scan time reduction by up to 50% in the United States.

** For investigational purposes in countries outside of the United States, South Korea, Canada, Brazil, Japan, Taiwan, Malaysia, Saudi Arabia, UAE, Thailand, Vietnam, Indonesia, and Israel.

See more images

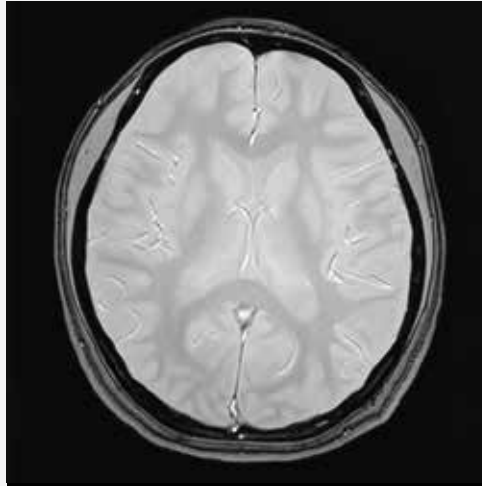


Conventional



Scan time 03:17

SwiftMR™*



Scan time 01:40

Brain T2*WI

1.5T
GE
Signa HDxt

2D GRE
Ⓐ 0.9×1.1×5.0 mm
Ⓑ 0.9×1.1×5.0 mm



Scan time 03:10

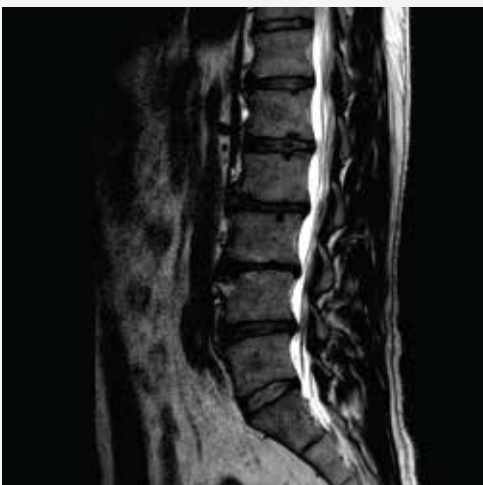


Scan time 01:41

C-Spine Sagittal T2WI

3.0T
GE
Discovery MR750

2D FSE
Ⓐ 0.4×0.4×3.0 mm
Ⓑ 0.4×0.4×3.0 mm



Scan time 06:08



Scan time 00:44

L-Spine T2WI

3.0T
Philips
Ingenia CX

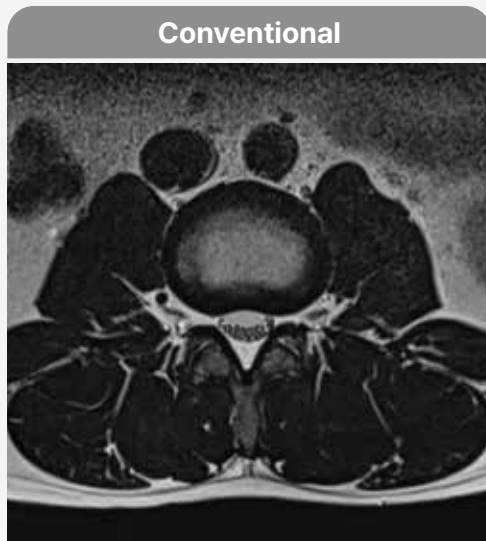
2D TSE
Ⓐ 0.4×0.9×3.0 mm
Ⓑ 0.6×1.1×3.0 mm

* For investigational purposes in countries outside of the United States, South Korea, Canada, Brazil, Japan, Taiwan, Malaysia, Saudi Arabia, UAE, Thailand, Vietnam, Indonesia, and Israel. FDA 510(k)-cleared to support images with scan time reduction by up to 50% in the United States.

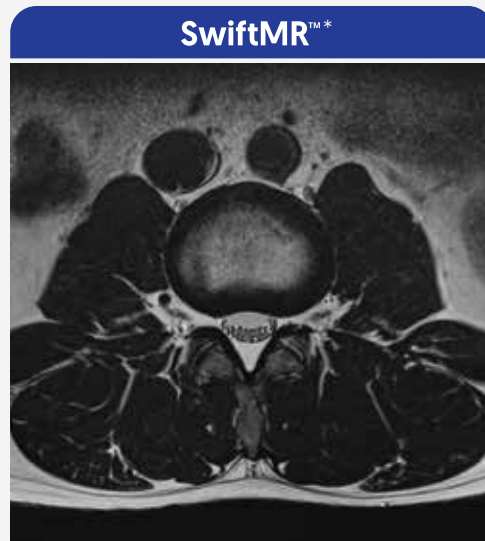
L-Spine T2WI

1.5T
Siemens
MAGNETOM Essenza

2D TSE
Ⓐ 0.6×0.8×4.0 mm
Ⓑ 0.6×0.8×4.0 mm



Scan time 03:00

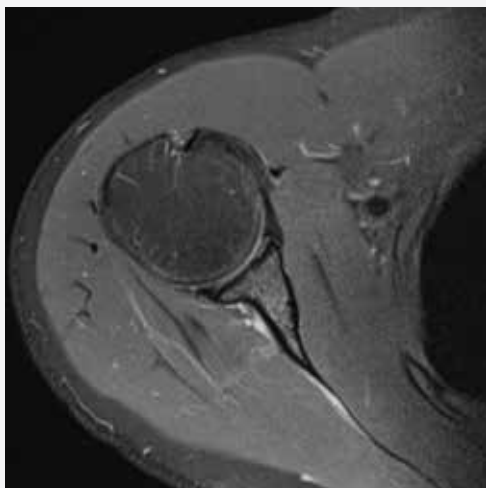


Scan time 01:28

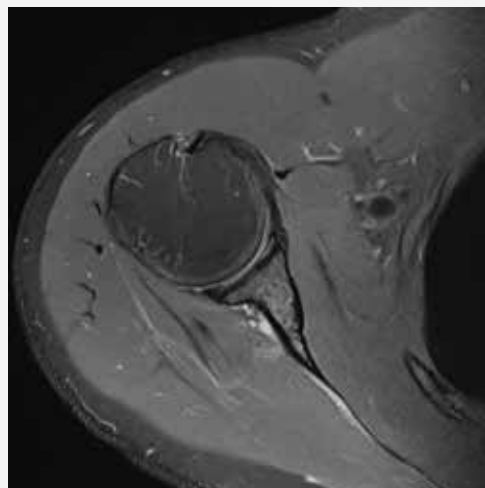
Shoulder PDWI FS

1.5T
Siemens
MAGNETOM Essenza

2D TSE
Ⓐ 0.6×0.8×3.0 mm
Ⓑ 0.6×0.8×3.0 mm



Scan time 02:51



Scan time 01:27

Wrist T2WI FS

3.0T
GE
SIGNA Premier

2D FSE
Ⓐ 0.3×0.4×2.0 mm
Ⓑ 0.3×0.4×2.0 mm



Scan time 03:19

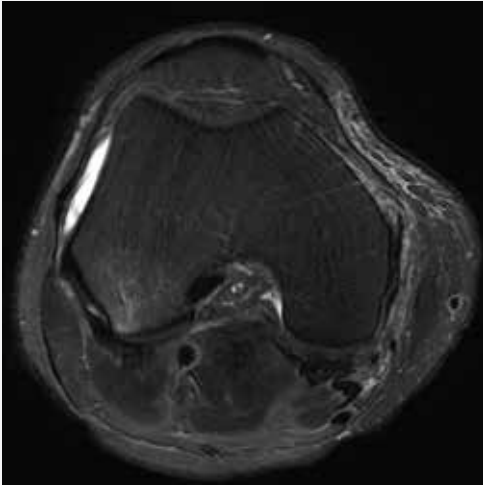


Scan time 01:49

See more images

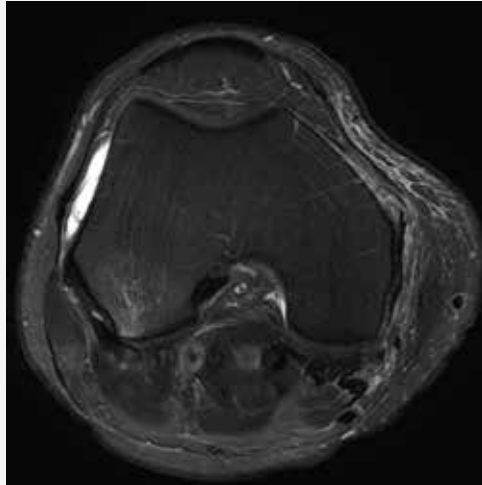


Conventional



Scan time 03:19

SwiftMR™*



Scan time 01:49

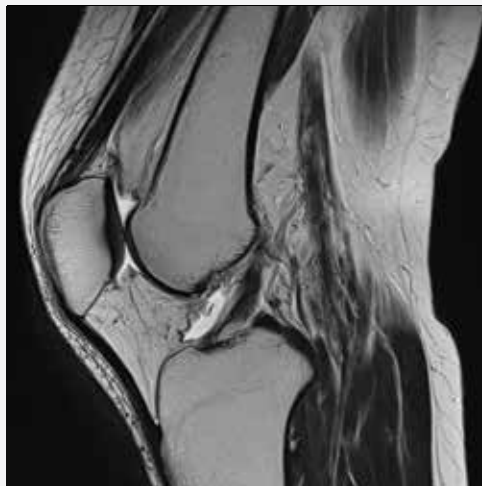
Knee T2WI FS

3.0T
GE
Discovery MR750

2D FSE
Ⓐ 0.4×0.4×3.0 mm
Ⓑ 0.4×0.4×3.0 mm



Scan time 03:15



Scan time 01:47

Knee T2WI

1.5T
Siemens
MAGNETOM Essenza

2D TSE
Ⓐ 0.5×0.6×3.0 mm
Ⓑ 0.5×0.6×3.0 mm



Scan time 02:42



Scan time 01:36

Knee PDWI FS

3.0T
Philips
Ingenia CX

2D TSE
Ⓐ 0.4×0.5×3.0 mm
Ⓑ 0.4×0.5×3.0 mm

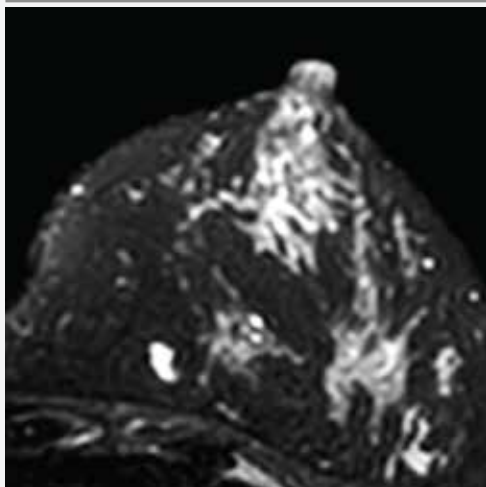
* For investigational purposes in countries outside of the United States, South Korea, Canada, Brazil, Japan, Taiwan, Malaysia, Saudi Arabia, UAE, Thailand, Vietnam, Indonesia, and Israel. FDA 510(k)-cleared to support images with scan time reduction by up to 50% in the United States.

Breast T2WI FS

3.0T
Philips
Ingenia CX

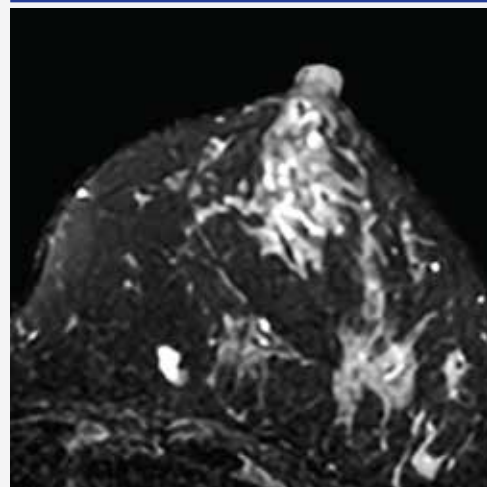
2D TSE
Ⓐ 1.4×1.5×1.0 mm
Ⓑ 1.2×1.3×1.0 mm

Conventional



Scan time 05:14

SwiftMR™*

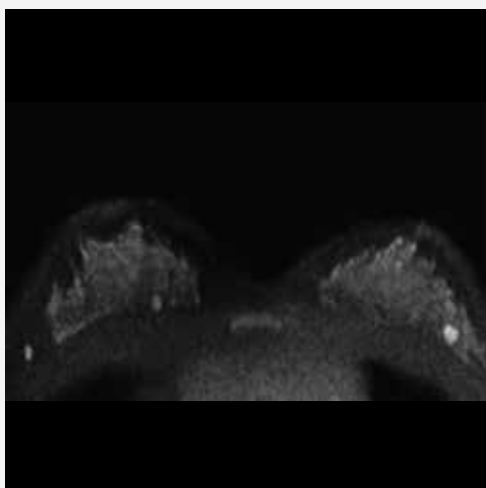


Scan time 03:17

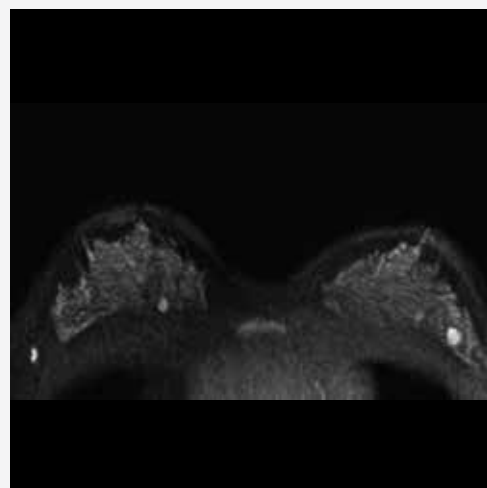
Breast DWI b800

3.0T
Philips
Ingenia CX

2D EPI Diffusion
Ⓐ 1.3×1.3×3.0 mm
Ⓑ 1.3×1.3×3.0 mm



Scan time 06:31

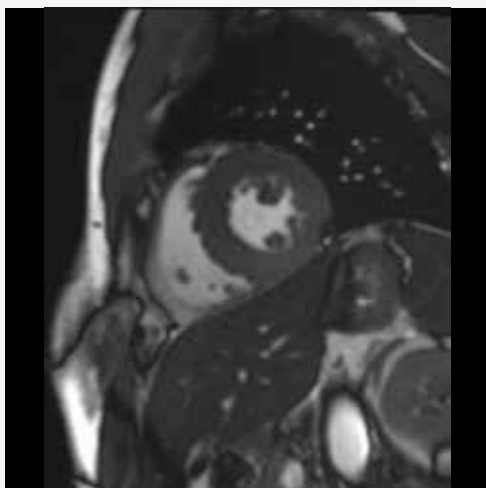


Scan time 04:43

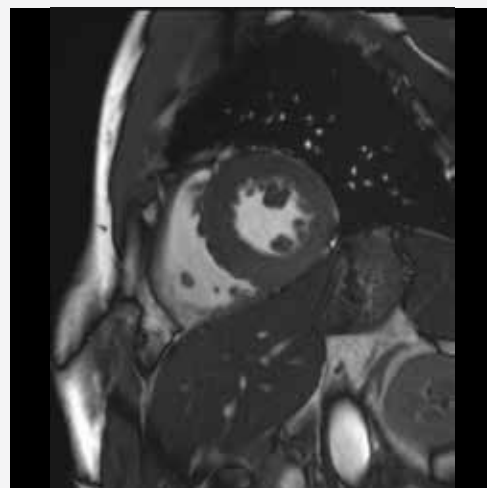
Heart CINE

3.0T
Siemens
MAGNETOM Skyra

2D TRUEF
Ⓐ 1.4×2.2×6.0 mm
Ⓑ 1.4×1.8×6.0 mm



Scan time 01:29

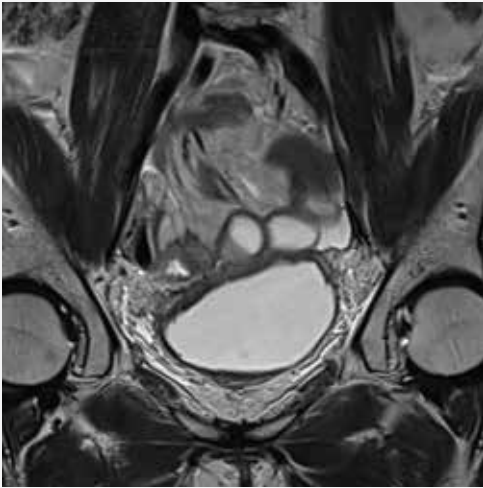


Scan time 00:55

See more images

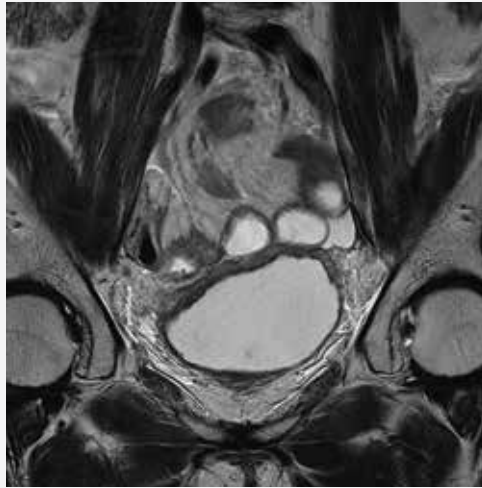


Conventional



Scan time 03:51

SwiftMR™*

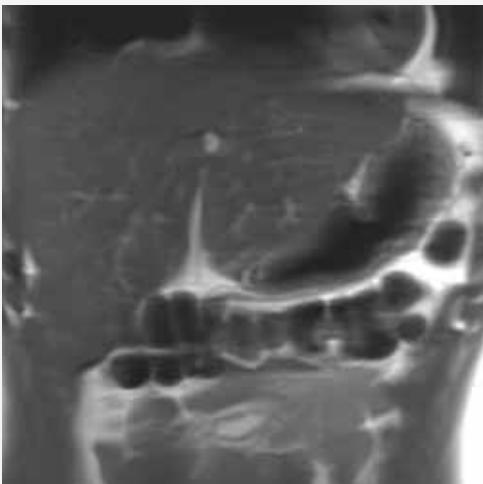


Scan time 02:41

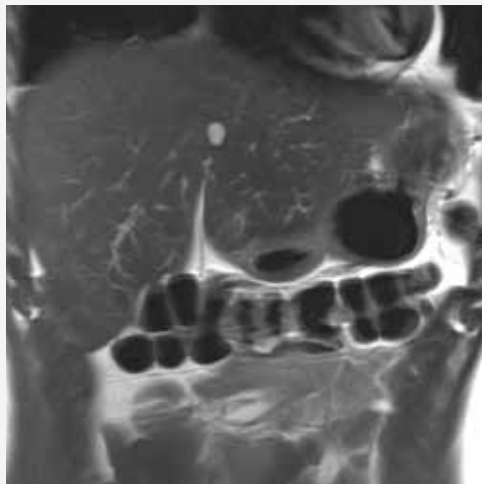
Bladder COR T2

3.0T
Siemens
MAGNETOM Skyra

2D TSE
Ⓐ 0.6×0.9×3.0 mm³
Ⓑ 0.5×0.7×3.0 mm³



Scan time 00:33
2 breath-hold

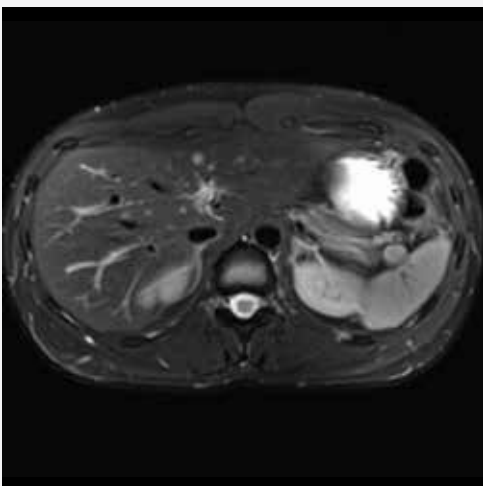


Scan time 00:17
1 breath-hold

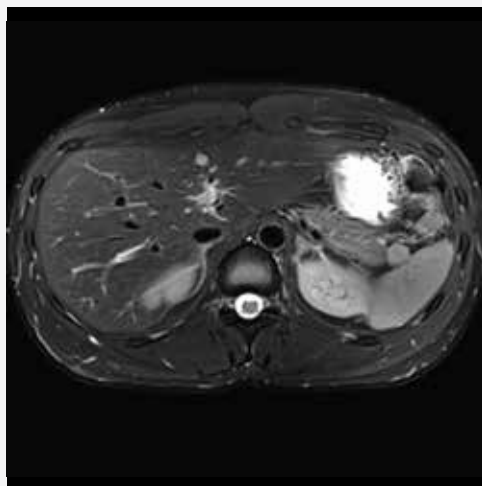
Liver T2WI

3.0T
Siemens
MAGNETOM Skyra

2D HASTE
Ⓐ 1.2×1.5×5.0 mm
Ⓑ 1.0×1.2×5.0 mm



Scan time 02:20



Scan time 01:45

Liver T2WI FS

3.0T
Siemens
MAGNETOM Skyra

2D TSE-BLADE
Ⓐ 1.5×1.5×4.0 mm
Ⓑ 1.2×1.2×4.0 mm

* For investigational purposes in countries outside of the United States, South Korea, Canada, Brazil, Japan, Taiwan, Malaysia, Saudi Arabia, UAE, Thailand, Vietnam, Indonesia, and Israel. FDA 510(k)-cleared to support images with scan time reduction by up to 50% in the United States.

SwiftMR™ Improves Image Quality

SwiftMR™ enhances image quality, making scans even from legacy systems clearer and more detailed.

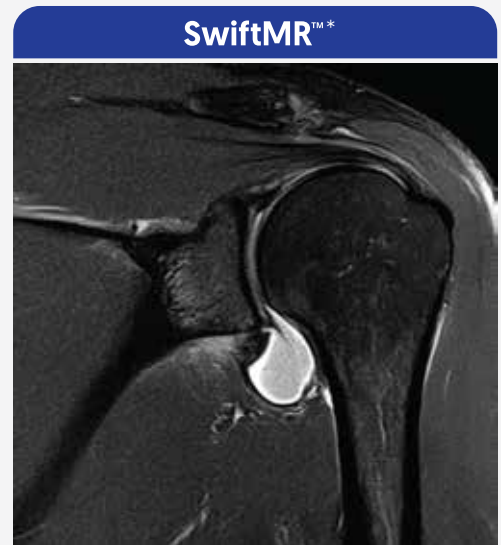
Shoulder T2WI FS

1.5T
Canon
Vantage Elan

2D FSE
0.5×0.8×3.0 mm
Same scan



Scan time 02:12



Scan time 02:12

Knee STIR

0.6T
FONAR
UPRIGHT Multi-Position MRI

2D FSE
0.8×0.8×4.0 mm
Same scan



Scan time 05:26

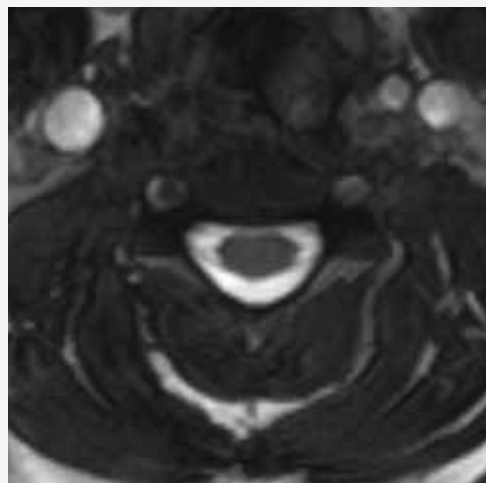


Scan time 05:26

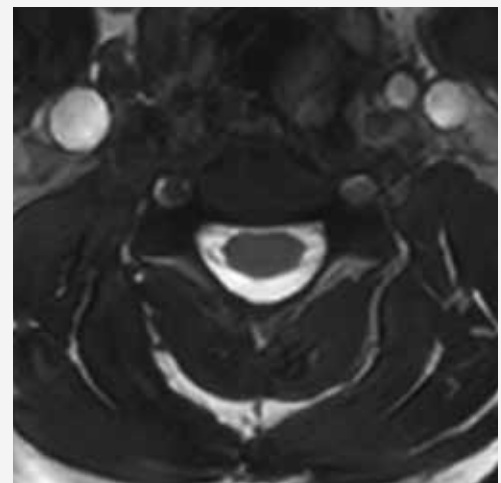
C-Spine T2WI

0.3T
Hitachi
AIRIS II

3D PBSG
1.0×1.2×3.5 mm
Same scan



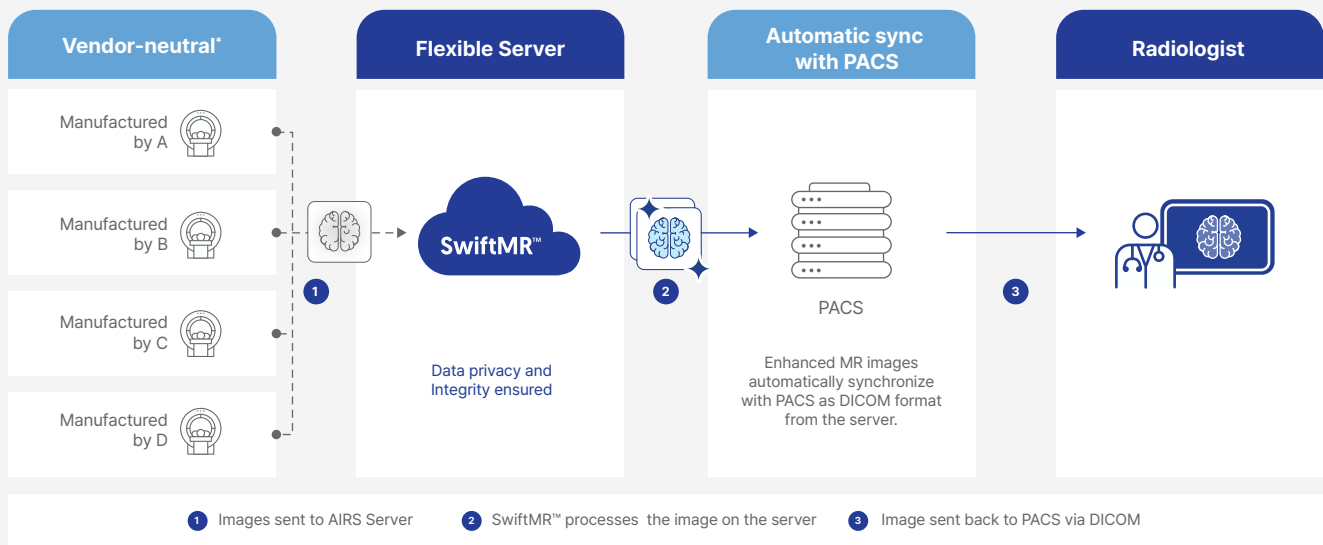
Scan time 03:24



Scan time 03:24

SwiftMR™ 's Seamless Integration

SwiftMR™ fits right into your existing system - no disruptions, no additional equipment required. We will provide a dedicated customer success team of MR experts to install our software and optimize your protocols.



Supported body parts, pulse sequence, field strength, patient population and MRI manufacturers may vary by country

Experience SwiftMR™ Firsthand

Message from the CEO

In today's competitive healthcare landscape, choosing the right technology partner is crucial for success. As a growing AI company, we understand your concerns about trusting new solutions, especially in the sensitive domain of healthcare. Here at AIRS Medical, we prioritize building trust and ensuring the reliability of our AI-powered radiology solutions.

We are proud of SwiftMR™ positively impacting over 1 million patients globally, gaining accolades from radiologists, imaging specialists, and hospital administrators. The milestone underlines the efficacy and reliability of our technology.

We believe in putting our solutions to the test. **That's why we offer a 30-day limited trial of SwiftMR™.** This allows you to witness firsthand the improvements it can bring to your operations.



Hye Seong Lee
AIRS Medical CEO

If you are interested in learning more about SwiftMR™, email us at contact@airsmmed.com or visit our site via QR code at airsmmed.com/en. We look forward to connecting with you.



Contact us



This document is for use by healthcare professionals only

contact@airsmed.com

AIRS Medical Inc.

DOC173 (Rev.13)

Seoul Office, HQ

13-14F, Keungil Tower, 223, Teheran-ro, Gangnam-gu
Seoul, 06142, Republic of Korea

T +82 70.7777.3187 F +82 2.6280.3185

Chicago Office

475 North Martingale Rd., Suite 710,
Schaumburg, IL 60173

T +1 847.306.8731