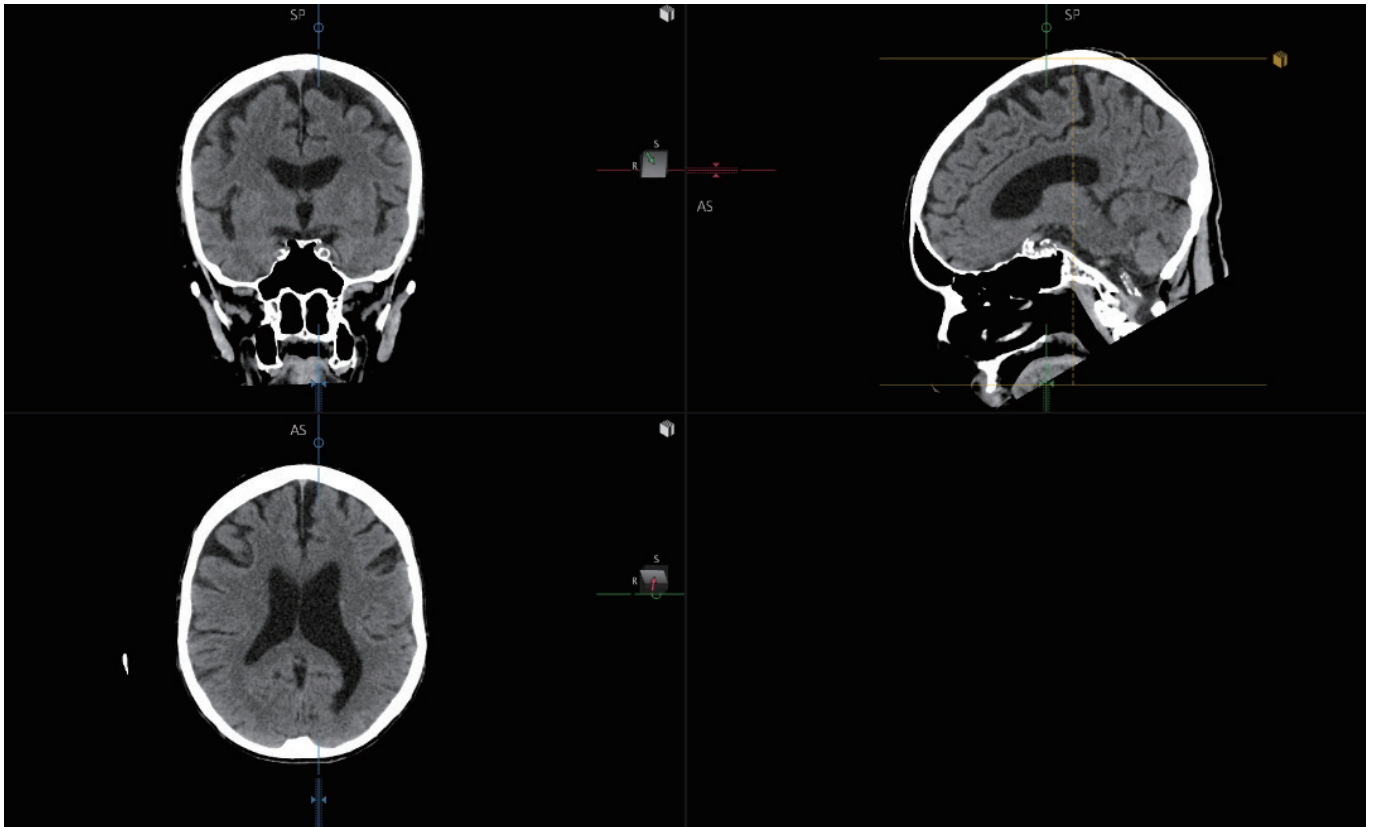


## Auto MPR Brain



The Auto MPR Brain software utilizes anticipatory processing, or Just-In-Time (JIT) processing, for CT brain images. The Auto MPR Brain software receives volumetric CT brain image data and automatically aligns the multiplanar reformatted images into a standard anatomical position based on the OM line. There is no user involvement in this automated process, thereby eliminating the need for manual image alignment and reformat. The JIT processing is triggered by user defined conditions for the input data such as protocol name or reconstruction type. In addition to the automatic processing provided by JIT, the Auto MPR Brain software includes a viewer for manual realignment and batching.

## Key Benefits

- Improves technologist's workflow by reducing operator input for manual realignment
- Improves the physician's workflow when comparatively reviewing current and prior scans by aligning each case in the same anatomical plane

## Key Features

- Automatic tilt correction
- Automatic reformat along a standard anatomical plane
- Automatic processing based on site specific input conditions

## CANON MEDICAL SYSTEMS CORPORATION

<https://global.medical.canon>

©Canon Medical Systems Corporation 2023. All rights reserved.  
Design and specifications are subject to change without notice.  
MCAHI0095EA 2023-07 CMSC/Produced in Japan

Canon Medical Systems Corporation meets internationally recognized standards for Quality Management System ISO 9001, ISO 13485. Canon Medical Systems Corporation meets the Environmental Management System standard ISO 14001.

This document may include trademarks or registered trademarks of their respective owners.

Disclaimer: Some features presented in this brochure may not be commercially available on all systems shown or may require the purchase of additional options. Please verify the availability of this application with your local/regional representative from Canon Medical Systems.

***Made For life***