

Organized by



National and Kapodistrian  
University of Athens  
School of Medicine  
Department of Pathophysiology



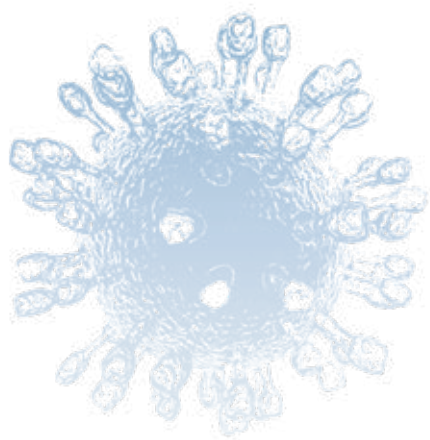
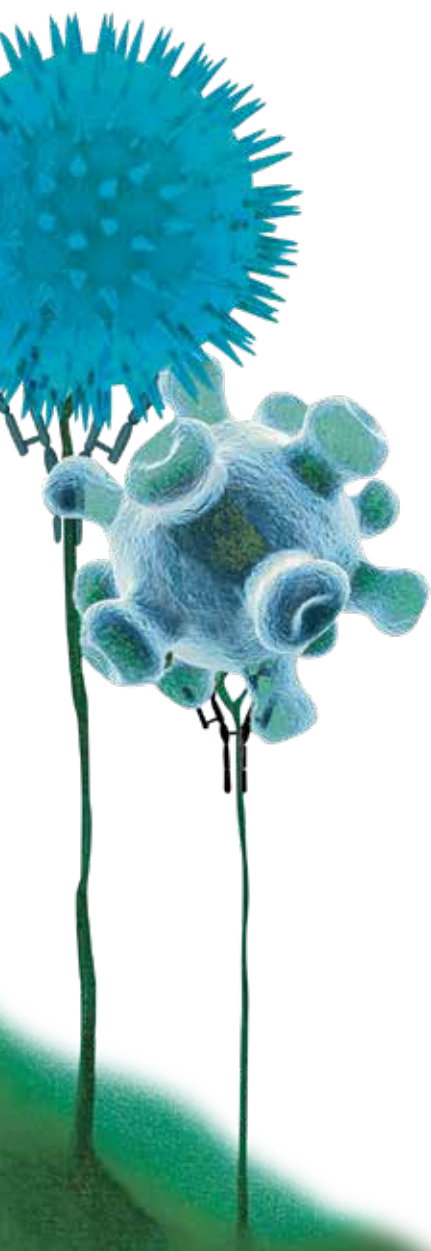
Institute of Autoimmune  
Systemic and Neurological  
Disorders

7<sup>th</sup>  
of *Summer School*  
**Immunology**  
[www.immunologysummerschool2019.gr](http://www.immunologysummerschool2019.gr)

May **13-17**  
**2019**

AKS Hinitza Bay  
**Porto Heli Greece**

**Final Program**



p. 2	Organizers
p. 3	Welcome Message
p. 4	Organizing Committee
p. 5	Program at a Glance

### **Scientific Programme**

p. 6	Monday   May 13, 2019
p. 8	Tuesday   May 14, 2019
p. 11	Wednesday   May 15, 2019
p. 13	Thursday   May 16, 2019
p. 16	Friday   May 17, 2019

p. 18	Posters Presentation Catalogue
p. 26	General Information A-Z
p. 31	Sponsors
p. 32	List of Speakers

## Organized by

---



**Department of Pathophysiology**  
School of Medicine  
University of Athens – Greece  
Mikras Asias 75  
Athens – 11527  
Greece



**Institute of Autoimmune Systemic  
and Neurological Disorders,  
IASYNN**  
Iassiou 8  
Athens – 11521  
Greece

## Organizing Secretariat

---



29 Kosta Varnali St.  
Athens – 15233  
Greece  
T. +30 210 6833600 (call center) | F. +30 210 6847700  
E. [congress@convin.gr](mailto:congress@convin.gr) | W. [www.convin.gr](http://www.convin.gr)



Dear students, colleagues and friends,

On behalf of the Organizing Committee, I would like to welcome you to the 7th Summer School of Immunology, which is going to take place in picturesque Porto Heli. Despite the dire economic situation, the organising committee has prepared a first-rate scientific program with outstanding speakers from Universities and Research Institutes worldwide. As in the previous years, our aspiration is the exchange of knowledge between students and lecturers and the forging of new research ideas through intense interactions. Our aims will be accomplished through teaching lectures, research lectures, short student presentations and our notoriously vibrant poster sessions. We are confident that our 7th Summer School will be a success and will build long-lasting relationships between established and forthcoming leaders in immunology.

**Professor Athanasios Tzioufas**

Department of Pathophysiology, Medical School  
National and Kapodistrian University of Athens

---

## Organizing Committee



**A. G. TZIOUFAS MD** | Professor-Director, Department of Pathophysiology, Medical School, University of Athens

**Scientific Program Coordinator: E. ANDREAKOS, PhD** | Investigator - Professor Level, Center for Clinical, Translational and Experimental Surgery, Biomedical Research Foundation Academy of Athens

**H. ALEXOPOULOS, D.Phil** | Research Fellow, Department of Pathophysiology, Medical School, University of Athens

**K. KAMPAS, PhD** | Investigator - Assistant Professor Level, Department of Immunology, Hellenic Pasteur Institute

**D. KONTOYIANNIS, PhD** | Investigator - Professor Level, School of Biology, Aristotle University of Thessaloniki, Institute of Immunology, Biomedical Sciences Research Center "Alexander Fleming"

**P. SKENDROS, MD, PhD** | Assistant Professor of Internal Medicine, First Department of Internal Medicine & Laboratory of Molecular Hematology, University Hospital of Alexandroupolis, Democritus University of Thrace, Alexandroupolis, Greece

**V. SOUMELIS, PhD** | Professor, Inserm U976, Hôpital Saint-Louis, Paris

**M. SPELETAS, MD, PhD** | Professor, Department of Laboratory Immunology, Medical School, University of Thessaly

**G. XANTHOU, PhD** | Investigator - Assistant Professor Level, Center for Basic Research, Biomedical Research Foundation Academy of Athens

**P. VERGINIS, PhD** | Investigator - Assistant Professor Level, Center of Immunology and Transplantation, Biomedical Research Foundation Academy of Athens

Monday, 13 May 2019		
15.00-19.30	Registration-Secretariat Opening Hours	Main Lobby
16.30-19.15	Scientific Sessions	Argolida Hall
21.00	Networking Event	Main Bar
Tuesday, 14 May 2019		
09.00-19.15	Registration-Secretariat Opening Hours	Main Lobby
09.00-10.30	Scientific Sessions	Argolida Hall
10.30-10.45	Short Talk	Argolida Hall
10.45-11.15	Coffee Break	Main Lobby
11.15-13.30	Scientific Sessions	Argolida Hall
13.30-15.00	Break	
15.00-17.00	Poster Viewing	Main Lobby
17.00-19.15	Scientific Sessions	Argolida Hall
Wednesday, 15 May 2019		
09.00-18.00	Registration-Secretariat Opening Hours	Main Lobby
09.00-10.45	Scientific Sessions	Argolida Hall
10.45-11.15	Coffee Break	Main Lobby
11.15-13.00	Scientific Sessions	Argolida Hall
13.00-13.15	Short Talk	Argolida Hall
13.15-13.30	Short Talk	Argolida Hall
13.30-15.00	Break	
15.00-17.00	Poster Viewing	Main Lobby
Thursday, 16 May 2019		
09.00-19.00	Registration-Secretariat Opening Hours	Main Lobby
09.00-10.30	Scientific Sessions	Argolida Hall
10.30-10.45	Short Talk	Argolida Hall
10.45-11.15	Coffee Break	Main Lobby
11.15-12.45	Scientific Sessions	Argolida Hall
12.45-13.00	Short Talk	Argolida Hall
13.00-13.15	Short Talk	Argolida Hall
13.15-13.30	Short Talk	Argolida Hall
13.30-15.00	Break	
15.00-17.00	Poster Viewing	Main Lobby
17.00-18.30	Scientific Sessions	Argolida Hall
Friday, 17 May 2019		
09.00-12.15	Secretariat Opening Hours	Main Lobby
09.00-12.00	Scientific Sessions	Argolida Hall
12.45	Departure	

15.00 – 19.30  Hall: **Main Lobby** 

Registration – Secretariat Opening Hours

16.30 – 17.00  Hall: **Argolida** 

Welcoming address

A. G. Tzioufas (GR), E. Andreakos (GR)

17:00-19:15  Hall: **Argolida** 

Precision medicine

Chairs: **A.G. Tzioufas, E. Andreakos**

17.00 – 17.45 Systemic autoimmune diseases in the era of precision medicine: Current concepts and future directions  
**A. G. Tzioufas (GR)**

17.45 – 18.30 Reclassification of autoimmune diseases in the molecular era  
**J. O. Pers (FRA)**

18.30 – 19.15 Tissue resident macrophage ontogeny and functions  
**F. Ginhoux (SG)**

21.00 **Main Bar** 

Networking Cocktail



A series of horizontal dotted lines for writing notes.

**09.00 – 19.15** Hall: **Main Lobby**

Registration – Secretariat Opening Hours

**08:00-10:45** Hall: **Argolida**

**Neurodegeneration**

Chairs: **V. Soumelis, H. Alexopoulos**

<b>09.00 – 09.45</b>	Mitophagy in biology, immunology and disease <b>N. Tavernarakis (GR)</b>
<b>09.45 – 10.30</b>	Central nervous-immune system communication in health and disease <b>N. Grigoriadis (GR)</b>
<b>10.30 – 10.45</b>	Aryl hydrocarbon receptor governs the transcriptional programme of IL-10-producing regulatory B cells <b>C. Piper (UK)</b>

**10.45 – 11.15** **Main Lobby**

Coffee Break

**11:15-13.30** Hall: **Argolida**

**Macrophages and dendritic cells**

Chairs: **C. Mauri, F. Ginhoux**

<b>11.15 – 12.00</b>	Sleep is good for your macrophages. But how? <b>F. Swirski (USA)</b>
<b>12.00 – 12.45</b>	Human Dendritic Cell Heterogeneity <b>F. Ginhoux (SG)</b>
<b>12.45 – 13.30</b>	Dendritic cell communication with T cells: from words to language <b>V. Soumelis (FRA)</b>

**13.30 – 15.00**

Break

**15.00 – 17.00** **Main Lobby**

Poster viewing

17.00 - 19.15



Hall: **Argolida**



### Autoimmunity

Chairs: **J. O. Pers, G. Xanthou**

17.00 – 17.45

Ectopic lymphoid neogenesis in autoimmune disease  
**M. Bombardieri (UK)**

17.45 – 18.30

Regulatory B cells in autoimmune disease  
**C. Mauri (UK)**

18.30 – 19.15

Immune regulatory mechanisms in neuroinflammation  
**G. Xanthou (GR)**

---

# Notes

A series of horizontal dotted lines for writing notes, spanning the width of the page.

**09.00 – 18.00**  Hall: **Main Lobby** 

Registration – Secretariat Opening Hours

**09:00-10:45**  Hall: **Argolida** 

**Innate immunity**

Chairs: **L.A. O’Neill, F. Swirski**

**09.00 – 09.45** Lambda IFNs in infections and beyond  
**E. Andreakos (GR)**

**09.45 – 10.30** Metabolic reprogramming in macrophages: prospects for new therapies  
**L.A. O’Neill (IRL)**

**10.30 – 10.45** Understanding the Molecular Logic of Human Diseases at a gene-expression level  
**M. Agelopoulos (GR)**

**10.45 – 11.15** **Main Lobby** 

Coffee Break

**11:15-13.30**  Hall: **Argolida** 

**Chronic diseases**

Chairs: **E. Andreakos, L. Dempsey**

**11.15 – 12.00** A metabolic checkpoint in cardiovascular disease  
**F. Swirski (USA)**

**12.00 – 13.00** Immunometabolism: a rediscovered frontier in Immunology  
**L. O’Neill (IRL)**

**13.00 – 13.15** Characterizing the immune cell landscape of human atherosclerotic plaques with single cell technologies  
**K. Thanopoulou (GR)**

**13.15 - 13.30** Krebs cycle activity and the lands route of phospholipid metabolism underpin cytokine induction in response to fungal patterns  
**J.J Fernández (SP)**

**13.15 – 15.00**

Break

**15.00 – 17.00** **Main Lobby** 

Poster viewing

---

# Notes



A series of horizontal dotted lines for writing notes, spanning the width of the page.

09.00 – 19.00  Hall: Main Lobby 

Registration – Secretariat Opening Hours

09:00-10:45  Hall: Argolida 

### Cancer Immunology I

Chairs: S. Quezada, M. Bombardieri

09.00 – 09.45 RNA binding proteins in inflammation and cancer  
D. L. Kontoyiannis (GR)

09.45 – 10.30 Immune regulation in cancer  
P. Verginis (GR)

10.30 – 10.45 Two distinct mesenchymal populations of lymphoid tissue organizer cells orchestrate the assembly of Peyer's patch microdomains  
A. Prados-Martin (GR)

10.45 – 11.15  Main Lobby 

Coffee Break

11:15 – 13:15  Hall: Argolida 

### Cancer immunology II

Chairs: C. Mauri, P. Verginis

11.15 – 12.00 Programming of dendritic cell function by the tumour microenvironment  
V. Soumelis (FRA)

12.00 – 12.45 The function and dysfunction of memory CD8+ T cells in tumor immunity  
S. Quezada (UK)

12.45 – 13.00 Wnt1 induces adaptive immune resistance in lung adenocarcinoma  
M. Tsoumakidou (GR)

13.00 – 13.15 Autophagy in myelodysplastic syndromes: the role of hif-1a/redd1 molecular pathway  
I. Stergiou (GR)

13.00 – 13.30 *CTLA4* gene defects and immune-dysregulation syndrome. Heterogeneity of clinical phenotype and disease penetrance  
A.M. Peristeri (GR)

13.30– 15.00

Break

15.00 – 17.00

Main Lobby



Poster viewing

17.00 – 18.30



Hall: Argolida



**Meet the Expert session**

Chair: **V. Soumelis**

17.00 – 17.45

Communication of science and scientific editing  
**L. Dempsey (Nature Immunology)**

17.45 – 18.30

Managing scientific projects from the professional administrator's perspective  
**A. Hernandez-Cervantes (H2020 ImmunAID)**





09.00 – 12.15  Hall: **Main Lobby** 

Secretariat Opening Hours

09.00 – 12.00  Hall: **Argolida** 

### Future and emerging therapies

Chairs: **L. Dempsey, M. Bombardieri**

09.00 – 09:45      The TGF $\beta$ -superfamily in tissue injury and repair in the brain  
**P. Sideras (GR)**

09.45 – 10.30      B cells in autoimmunity: development, autoreactivity and therapeutic implications  
**M. Bombardieri (UK)**

10.30 – 11.15      Regulatory B cell development, plasticity and functions  
**C. Mauri (UK)**

11.15 – 12.00      Immune checkpoints in cancer: From principles to treatments  
**S. Quezada (UK)**

A series of horizontal dotted lines for writing notes, spanning the width of the page.

PP01

**ARYL HYDROCARBON RECEPTOR GOVERNS THE TRANSCRIPTIONAL PROGRAMME OF IL-10-PRODUCING REGULATORY B CELLS**

Piper C<sup>1</sup>, Rosser E<sup>1,2</sup>, Nistala K<sup>1</sup>, Krausgruber T<sup>3</sup>, Rendeiro A<sup>3</sup>, Banos A<sup>4</sup>, Drozdov I<sup>5</sup>, Villa M<sup>6</sup>, Thomson S<sup>1</sup>, Xanthou G<sup>7</sup>, Bock C<sup>3</sup>, Stockinger B<sup>5</sup>, Mauri C<sup>1</sup>

<sup>1</sup>Centre for Rheumatology, Division of Medicine, University College London, UK, <sup>2</sup>UCL Institute of Child Health, 30 Guilford Street, London, WC1N 1EH, UK, <sup>3</sup>CeMM Research Center for Molecular Medicine of the Austrian Academy of Sciences, Vienna, Austria, <sup>4</sup>Inflammation and Autoimmunity Lab, Biomedical Research Foundation of the Academy of Athens (BRFAA), Athens, Greece, <sup>5</sup>Bering Limited, London, TW2 6EA, United Kingdom, <sup>6</sup>The Francis Crick Institute, London, NW1 1AT, UK, <sup>7</sup>Cellular Immunology Lab, Biomedical Research Foundation of the Academy of Athens, (BRFAA), Athens, Greece

PP02

**THE IMPLICATION OF NGF AND TRKA IN IFLAMMATORY LOCI IN EXPERIMENTAL AUTOIMMUNE ENCEPHALOMYELITIS**

Delivanoglou N<sup>1</sup>, Kesidou E<sup>1</sup>, Touloumi O<sup>1</sup>, Theotokis P<sup>1</sup> Poulatsidou K-N<sup>1</sup>, Lagoudaki R<sup>1</sup>, Nousiopoulou E<sup>1</sup>, Kofidou E<sup>1</sup>, Nikolaidis I<sup>1</sup>, Bakirtzis C<sup>1</sup>, Pelidou H-S<sup>4</sup>, Grigoriadis N<sup>1</sup>, Boziki M<sup>1</sup>, Charalabopoulos I<sup>3</sup>, Simeonidou C<sup>2</sup>

<sup>1</sup>B<sup>1</sup>Department of Neurology, Laboratory of Experimental Neurology and Neuroimmunology, AHEPA University Hospital, <sup>2</sup>Department of Experimental Physiology, Medical School, Aristotle University of Thessaloniki, <sup>3</sup>Laboratory of Pharmacology, School of Medicine, University of Crete

PP03

**GENERATION OF MONOCLONAL ANTIBODIES TARGETING TAMs USING n-CoDeR<sup>®</sup> LIBRARY AND F.I.R.S.T.<sup>™</sup> PLATFORM AS NOVEL IMMUNOTHERAPY AGENTS AGAINST SOLID CANCER**

Lindholm C, Emimi E, Alexieva V, Schiött T, Conrotto P, Rivollier A, Karlsson E, Teige I, Jaansson Gyllenbäck E  
 BiolInvent International AB, Lund, Sweden

PP04

**KREBS CYCLE ACTIVITY AND THE LANDS ROUTE OF PHOSPHOLIPID METABOLISM UNDERPIN CYTOKINE INDUCTION IN RESPONSE TO FUNGAL PATTERNS**

Márquez S<sup>1,7</sup>, Fernández J.J.<sup>1,7</sup>, Mancebo C<sup>1</sup>, Herrero-Sánchez C<sup>1,2</sup>, Alonso S<sup>2</sup>, A. Sandoval T<sup>3,4,5</sup>, Rodríguez Prados M<sup>1,2</sup>, Cubillos-Ruiz J.R.<sup>3,4,5</sup>, Montero O<sup>6</sup>, Fernández N<sup>1,2</sup>, Sánchez Crespo M<sup>2</sup>

<sup>1</sup>Departamento de Bioquímica y Biología Molecular, Facultad de Medicina, Universidad de Valladolid, 47005-Valladolid, Spain, <sup>2</sup>Instituto de Biología y Genética Molecular, CSIC-Universidad de Valladolid, 47003-Valladolid, Spain <sup>3</sup>Weill Cornell Graduate School of Medical Sciences, Cornell University, New York, NY, 10065, USA <sup>4</sup>Department of Obstetrics and Gynecology, Weill Cornell Medicine, New York, NY, 10065, USA, <sup>5</sup>Sandra and Edward Meyer Cancer Center, Weill Cornell Medicine, New York, NY, 10065, USA, <sup>6</sup>Centro para el Desarrollo de la Biotecnología, CSIC, Parque Tecnológico de Boecillo, 47151- Valladolid, Spain <sup>7</sup>These authors contributed equally

PP05

**TWO DISTINCT LYMPHOID TISSUE ORGANIZER CELL POPULATIONS ORCHESTRATE THE ASSEMBLY OF PEYER'S PATCH MICRODOMAINS**

Prados A<sup>1\*</sup>, Onder L<sup>2\*</sup>, Koliarakis V<sup>1</sup>, Cheng H-W<sup>2</sup>, Luetge M<sup>2</sup>, Ludewig B<sup>2</sup>, Kollias G<sup>1</sup>

<sup>1</sup>BSRC "Alexander Fleming", Vari, Greece; <sup>2</sup> Institute of Immunobiology, Kantonsspital St. Gallen, St. Gallen, Switzerland

\* indicates equal contribution

**Poster Area**

**Hall: Main Lobby**

**PP06**

**LYMPHOTOXIN BETA RECEPTOR SIGNALING PROTECTS FROM COLONIC INFLAMMATION IN A MOUSE MODEL OF TNF-DRIVEN CROHN'S-LIKE DISEASE**

Iliopoulou L<sup>1</sup>, Prados A<sup>1</sup>, Koliaraki V<sup>1</sup>, Kollias G<sup>1,2</sup>

<sup>1</sup>BSRC "Alexander Fleming", Vari, Greece, <sup>2</sup>Medical School, National and Kapodistrian University of Athens

**PP07**

**STUDY OF IMMUNOGLOBULIN (IG) A DEFICIENCY IN PATIENTS WITH POSITIVE PNEUMOCOCCAL SOLUBLE ANTIGEN IN URINE DURING 2017-2018**

Zotos N<sup>1</sup>, Gerasimou M<sup>1</sup>, Gianniki M<sup>2</sup>, Bougias D<sup>2</sup>, Mantzoukis S<sup>3</sup>, Christodoulou P<sup>1</sup>, Papageorgiou L<sup>1</sup>, Tsifetaki N<sup>2</sup>

<sup>1</sup>Immunology Department, General Hospital of Ioannina, <sup>2</sup>Rheumatology Department, General Hospital of Ioannina, <sup>3</sup>Cardiology Department, General Hospital of Ioannina

**PP08**

**INCIDENCE OF RUBELLA IMMUNOGLOBULIN IGG AND IGM AMONG PATIENTS OF GENERAL HOSPITAL DURING 2018**

Zotos N<sup>1</sup>, Gerasimou M<sup>1</sup>, Gianniki M<sup>2</sup>, Bougias D<sup>2</sup>, Mantzoukis S<sup>3</sup>, Papageorgiou L<sup>1</sup>, Tsifetaki N<sup>2</sup>

<sup>1</sup>Immunology Department, General Hospital of Ioannina, <sup>2</sup>Rheumatology Department, General Hospital of Ioannina, <sup>3</sup>Cardiology Department, General Hospital of Ioannina

**PP09**

**CLEAVAGE OF CD95L/ FASL IN HEALTHY CELL LINE VERSUS FLU INFECTED CELLS**

Alaidarous S<sup>1,2</sup>, Coombes J<sup>1</sup>, Stewart J-P<sup>1</sup>, Legembre P<sup>3</sup>, Flynn R-J<sup>1</sup>

<sup>1</sup>Department of Infection Biology, Institute of Infection and Global Health, University of Liverpool <sup>2</sup>Imam Abdulrahman Bin Faisal University, Dammam, Saudi Arabia <sup>3</sup>INSERM ERL440-OSS, Equipe Labellisée, Ligue Contre Le Cancer, France

**PP10**

**DYSREGULATION OF NLRP3 INFLAMMASOME PATHWAYS IN PATIENTS WITH SEVERE ASTHMA**

Theofani E<sup>1</sup>, Lama J<sup>1</sup>, Morianos I<sup>1</sup>, Semitekolou M<sup>1</sup>, Rovina N<sup>2\*</sup>, Samitas K<sup>3\*</sup>, Xanhou G<sup>1</sup>

<sup>1</sup>Laboratory of Cellular Immunology, Biomedical Research Foundation Academy of Athens, Athens, Greece, <sup>2</sup>1st Department of Respiratory Medicine, Medical School, National Kapodistrian University of Athens, "Sotiria" Regional Chest Diseases Hospital, Athens, Greece <sup>3</sup>7th Respiratory Clinic and Asthma Center of the "Sotiria" Athens Chest Hospital, Athens, Greece

\*equal contribution

**PP11**

**ACTIVIN-A DIRECTS AHR-CD73-DRIVEN METABOLIC PROGRAMS TO RESTRAIN TH17 PATHOGENICITY AND CNS AUTOIMMUNITY**

Papadopoulou G<sup>1</sup>, Morianos I<sup>1</sup>, Trochoutsou A<sup>1</sup>, Semitekolou M<sup>1</sup>, Banos A<sup>1</sup>, Konstantopoulos D<sup>2</sup>, Manousopoulou A<sup>3</sup>, Kapasa M<sup>1</sup>, Wei P<sup>4</sup>, Kalamatas T<sup>5</sup>, Karageorgiou K<sup>5</sup>, Sallusto F<sup>6</sup>, Garbis S<sup>7</sup>, Pan F<sup>4</sup>, Quintana F-J<sup>8</sup>, Xanhou G<sup>1</sup>

<sup>1</sup>Biomedical Research Foundation Of The Academy Of Athens <sup>2</sup>Biomedical Sciences Research Center Alexander Fleming <sup>3</sup>Institute for Life Sciences, University of Southampton <sup>4</sup>Department of Oncology and Medicine, Sidney Kimmel Comprehensive Cancer Center, Johns Hopkins University School of Medicine <sup>5</sup>Department of Neurology, Athens Medical Center <sup>6</sup>Department of Biology, Institute for Microbiology, ETH <sup>7</sup>Proteome Exploration Laboratory, Beckman Institute, Division of Biology and Biological Engineering, California Institute of Technology <sup>8</sup>Brigham and Women's Hospital, Department of Neurology, Harvard Medical School

PP12

**NATURALLY OCCURRING ANTI-NEURONAL ANTIBODIES WITHIN IVIG PREPARATIONS: IMPORTANCE IN CLINICAL PRACTICE**

**Dimitriadou M**<sup>1</sup>, Alexopoulos H<sup>1</sup>, Akrivou S<sup>1</sup>, Gola E.<sup>1</sup> Dalakas MC<sup>1,2</sup>

<sup>1</sup>Neuroimmunology Unit, Department of Pathophysiology, Faculty of Medicine, National and Kapodistrian University of Athens <sup>2</sup>Department of Neurology, Thomas Jefferson University, Philadelphia, USA

PP13

**CLINICAL AND IMMUNOLOGICAL STUDIES IN A 3-GENERATION FAMILY MEMBERS WITH VERY-HIGH TITERS OF ANTI-GAD ANTIBODIES**

**Tsiortou P**<sup>1</sup>, Alexopoulos H<sup>1</sup>, Akrivou S<sup>1</sup>, Barba C<sup>1</sup>, Kosmidis M<sup>1</sup>, Dalakas MC<sup>1,2</sup>

<sup>1</sup>Neuroimmunology Unit, Department of Pathophysiology, Faculty of Medicine, National and Kapodistrian University of Athens <sup>2</sup>Department of Neurology, Thomas Jefferson University, Philadelphia, USA

PP14

**ANTI-TR ANTIBODIES IN AUTOIMMUNE CEREBELLAR ATAXIA: SERIAL ANTIBODY TESTING AND RESPONSE TO IMMUNOTHERAPY**

**Barba C**<sup>1</sup>, Alexopoulos H<sup>1</sup>, Dimitriadou M<sup>1</sup>, Akrivou S<sup>1</sup>, Tsiortou P<sup>1</sup>, Plomaritoglou A<sup>3</sup>, Dalakas MC<sup>1,2</sup>

<sup>1</sup>Neuroimmunology Unit, Department of Pathophysiology, Faculty of Medicine, National and Kapodistrian University of Athens <sup>2</sup>Department of Neurology, Thomas Jefferson University, Philadelphia, USA <sup>3</sup>Department of Neurology, YGEIA Medical Center, Athens, Greece

PP15

**INCIDENCE OF LEISHMANIA AMONG PATIENTS OF GENERAL HOSPITAL DURING 2 YEARS**

Christodoulou P, **Gerasimou M**, Mantzoukis S, Papageorgiou L, Chrisostomou E, Pourmou A, Tsifetaki N, Zotos N  
General Hospital of Ioannina

PP16

**AUTOPHAGY IN MYELODYSPLASTIC SYNDROMES: THE ROLE OF HIF-1 $\alpha$ /REDD1 MOLECULAR PATHWAY**

**Stergiou I**<sup>1</sup>, Kambas K<sup>1,2</sup>, Giannouli S<sup>3</sup>, Katsila T<sup>4</sup>, Dimitrakopoulou A<sup>5</sup>, Vidali V<sup>6</sup>, Synolaki E<sup>7</sup>, Papageorgiou A<sup>1</sup>, Nezos A<sup>8</sup>, Patrinos G<sup>4</sup>, Sideras P<sup>7</sup>, Ritis K<sup>9</sup>, Tzioufas A<sup>1</sup>, Voulgarelis M<sup>1</sup>

<sup>1</sup>Department of Pathophysiology, School of Medicine, National and Kapodistrian University of Athens <sup>2</sup>Department of Immunology, Laboratory of Molecular Genetics, Institut Pasteur Hellenique <sup>3</sup>Second Department of Internal Medicine, Hematology Unit, School of Medicine, National and Kapodistrian University of Athens <sup>4</sup>Department of Pharmacy, University of Patras <sup>5</sup>Flow Cytometry Laboratory, Laiko General Hospital, Athens <sup>6</sup>National Center for Scientific Research "Demokritos" <sup>7</sup>Biomedical Research Foundation of the Academy of Athens <sup>8</sup>Department of Physiology, School of Medicine, National and Kapodistrian University of Athens <sup>9</sup>Department of Internal Medicine, Democritus University of Thrace, Alexandroupolis

PP17

**A COMPARATIVE STUDY OF THE LIPID PROFILE OF PATIENTS SUFFERING FROM RHEUMATOID ARTHRITIS BEFORE AND AFTER ANTI-TNF TREATMENT**

**Zotos N**<sup>1</sup>, Tatsina E<sup>2</sup>, Bougias D<sup>3</sup>, Christodoulou P<sup>1</sup>, Giannikou M<sup>3</sup>, Gerasimou M<sup>1</sup>, Mantzoukis S<sup>4</sup>, Papageorgiou L<sup>1</sup>, Tsifetaki N<sup>3</sup>

<sup>1</sup>Microbiology Department, General Hospital of Ioannina <sup>2</sup>Private office, Ioannina <sup>3</sup>Rheumatology Department, General Hospital of Ioannina <sup>4</sup>Cardiology Department, General Hospital of Ioannina

Poster Area

Hall: Main Lobby

PP18

**ANALYSIS OF GITR SIGNALING PATHWAY AND ROLE OF ABIN1 IN T CELL DEVELOPMENT**

Janusova S, Draberova H, Drobek A, Stepanek O, Draber P  
Laboratory of Adaptive Immunity, Institute of Molecular Genetics, Czech Academy of Science, Prague, Czech Republic

PP19

**BARDET-BIEDL SYNDROME PROTEIN COMPLEX IN THE ADAPTIVE IMMUNE SYSTEM**

Tsyklauri O, Niederlova V, Huranova M, Štěpánek O  
Institute Of Molecular Genetics Of The ASCR, v. v. i.

PP20

**PREVALENCE AND AGE-GENDER ASSOCIATION OF A VARIETY OF AUTOANTIBODIES IN A COHORT OF HEALTHY GREEK ADULTS**

Ampelakiotou K, Soufleros K, Synodinou E, Pomoni S, Lemoni A, Tsirogianni A  
Department of Immunology & Histocompatibility, Athens

PP21

**SALIVA DNA METHYLATION ANALYSIS IN SJOGREN'S SYNDROME**

Karagianni P, Venetsanopoulou A, Argyropoulou O, Kapsogeorgou E, Anezaki M, Tzioufas A  
Department of Pathophysiology, School of Medicine, National and Kapodistrian University of Athens, Athens, Greece

PP22

**IDENTIFICATION AND SINGLE CELL SORTING OF CONVENTIONAL DENDRITIC CELLS TYPE 1 FROM PRIMARY HUMAN LUNG ADENOCARCINOMAS**

Kerdidani D<sup>1</sup>, Goudevenou K<sup>1</sup>, Kaniaris E<sup>2</sup>, Vachlas K<sup>3</sup>, Potaris K<sup>3</sup>, Tsoumakidou M<sup>1</sup>  
<sup>1</sup>BSRC "Alexander Fleming", Department of Immunology, Vari, Greece <sup>2</sup>ICU First Department of Respiratory Medicine School, University of Athens, Sotiria General Hospital, Athens, Greece <sup>3</sup>Department of Thoracic Surgery, Sotiria General Hospital, Athens, Greece

PP23

**IMMUNOLOGICAL OUTCOMES OF MAGNETIC NANOFLOWER-INDUCED CANCER CELL DEATH**

Kerdidani D<sup>1</sup>, Goudevenou K<sup>1</sup>, Theodosiou M<sup>2,3</sup>, Krokidis M<sup>2,3</sup>, Katsa M<sup>1</sup>, Lala M<sup>1</sup>, Efthimiadou E.K<sup>2,3</sup>, Tsoumakidou M<sup>1</sup>  
<sup>1</sup>BSRC "Alexander Fleming", Department of Immunology, Vari, Greece <sup>2</sup>Institute of Nanoscience and Nano-technology, N.C.S.R. "Demokritos", Ag. Paraskevi, Greece <sup>3</sup>Department of Chemistry, National and Kapodistrian University of Athens, Zografou, Greece

PP24

**BTK GENE AT THE CROSSROADS OF IMMUNODEFICIENCY AND IMMUNOTHEPARY**

Tsialta I, Speletas M  
Laboratory of Immunology & Histocompatibility, Faculty of Medicine, University of Thessaly, Larissa, Greece

PP25

**FAS GENE ALTERATIONS AND AUTOIMMUNE LYMPHOPROLIFERATIVE SYNDROME. CLINICAL AND MOLECULAR ASPECTS**

Raftopoulou S, Speletas M  
Laboratory of Immunology & Histocompatibility, Faculty of Medicine, University of Thessaly, Larissa, Greece

PP26

**CTLA4 GENE DEFECTS AND IMMUNE-DYSREGULATION SYNDROME. HETEROGENICITY OF CLINICAL PHENOTYPE AND DISEASE PENETRANCE**

**Peristeri A-M, Speletas M**

Laboratory of Immunology & Histocompatibility, Faculty of Medicine, University of Thessaly, Larissa, Greece.

PP27

**CHARACTERIZATION OF LEUKOCYTE POPULATIONS PRESENT IN THE NASOPHARYNX OF ASTHMATIC AND CONTROL SUBJECTS AND ASSOCIATION WITH THE MICROBIOME COMPOSITION**

**Triantafyllia V<sup>1</sup>, Koltsida O<sup>1,3</sup>, Galani I<sup>1</sup>, Kritikou M<sup>2</sup>, Xepapadaki P<sup>2</sup>, Rovina N<sup>3</sup>, Papadopoulos N<sup>2</sup> Andreakos E<sup>1</sup>**

<sup>1</sup>Biomedical research foundation of the academy of Athens, Greece <sup>2</sup>University of Athens, allergy department, 2nd pediatric clinic, Athens, Greece <sup>3</sup>Sotiria thoracic diseases hospital of Athens, Greece

PP28

**UNRAVELING THE HETEROGENEITY OF THE MONONUCLEAR PHAGOCYTE SYSTEM IN OBESITY**

**Siouti E, Andreakos E**

Department of Immunology, Center for Clinical, Experimental Surgery and Translational Research, Biomedical Research Foundation of the Academy of Athens, Greece

PP29

**GENERATION AND CHARACTERISATION OF A NOVEL IFN $\gamma$  REPORTER MOUSE**

**Vlachiotsis S, Galani I, Andreakos E**

Biomedical Research Foundation Academy of Athens, Greece

PP30

**CHARACTERIZING THE IMMUNE CELL LANDSCAPE OF HUMAN ATHEROSCLEROTIC PLAQUES WITH SINGLE CELL TECHNOLOGIES**

**Thanopoulou K<sup>1</sup>, Manioudaki M<sup>1</sup>, Galani I-E<sup>1</sup>, Sartori A<sup>2</sup>, Dutertre A-C<sup>3</sup>, Borel C<sup>1</sup>, Sigala F<sup>4</sup>, Dermizakis E-T<sup>1,2,5,6</sup>, Ginhoux F<sup>3</sup>, Soumeli V<sup>7,8</sup>, Andreakos E<sup>1</sup>**

<sup>1</sup>Laboratory of Immunobiology, Centre for Clinical, Experimental Surgery and Translational Research, Biomedical Research Foundation of the Academy of Athens, Athens, Greece <sup>2</sup>Department of Genetic Medicine and Development, University of Geneva Medical School, Geneva, Switzerland <sup>3</sup>Agency for Science, Technology and Research (A\*STAR), Singapore Immunology Network (SIgN), Singapore <sup>4</sup>Hippokraton Hospital, Athens, Greece <sup>5</sup>IGE3 Institute of Genetics and Genomics of Geneva, Switzerland <sup>6</sup>SIB, Swiss Institute of Bioinformatics, Geneva, Switzerland <sup>7</sup>Institut Curie, PSL Research University, Paris, France <sup>8</sup>INSERM, Paris, France

PP31

**CROSS-TOLERANCE UNDERLIES THE ANTI-INFLAMMATORY ACTION OF METHOTREXATE**

**Fuentelsaz-Romero S<sup>1</sup>, Municio C<sup>1</sup>, Dominguez-Soto A<sup>2</sup>, Lamana A<sup>3</sup>, Montes N<sup>3</sup>, D. Cuevas V<sup>2</sup>, García-Campos R<sup>1</sup>, L. Pablos J<sup>4</sup>, González-Álvarez I<sup>3</sup>, Puig-Kröger A<sup>1</sup>**

<sup>1</sup>Laboratorio de Inmuno-Metabolismo, Hospital General Universitario Gregorio Marañón, Instituto de Investigación Sanitaria Gregorio Marañón, Madrid, Spain <sup>2</sup>Centro de Investigaciones Biológicas, Madrid, Spain <sup>3</sup>Servicio de Reumatología, Hospital Universitario La Princesa, Instituto de Investigación Sanitaria Hospital Universitario La Princesa, Madrid, Spain <sup>4</sup>Servicio de Reumatología, Instituto de Investigación Hospital Universitario 12 de Octubre, Universidad Complutense de Madrid, Madrid, Spain



**Poster Area**

**Hall: Main Lobby**

**PP32**

**STUDY INFLAMMATION RESOLUTION MECHANISMS IN AUTOINFLAMMATORY DISEASES**

**Papadaki M<sup>1</sup>**, Laskari K<sup>2</sup>, Tzioufas A<sup>2</sup>, Sfikakis P<sup>2</sup>, Andreakos E<sup>1</sup>

<sup>1</sup>Laboratory of Immunology, Centre for Clinical, Experimental Surgery and Translational Research of Biomedical Research Foundation of the Academy of Athens (BRFAA), <sup>2</sup>Laikon Hospital, Medical School, National and Kapodistrian University of Athens

**PP33**

**ABERRANT MITOCHONDRIAL FUNCTION AND ENHANCED OXIDATIVE INSULTS DICTATE REGULATORY T CELL FATE DURING AUTOIMMUNITY**

**Alissafi T<sup>1</sup>**, Kalafati L<sup>1</sup>, Lazari M<sup>1</sup>, Kouklina I<sup>1</sup>, Malissovass N<sup>1</sup>, Filia A<sup>1</sup>, Manifava M<sup>2</sup>, Alexaki I<sup>3</sup>, Ktistakis N.T<sup>2</sup>, Boumpas D<sup>1</sup>, Verginis P<sup>1</sup>

<sup>1</sup>Biomedical Research Foundation of the Academy of Athens, 4 Soranou Efessiou Street, 11527 Athens, Greece, <sup>2</sup>Babraham Institute, Signalling Programme, Cambridge CB22 3AT, UK, <sup>3</sup>Institute of Clinical Chemistry and Laboratory Medicine, University Clinic Carl Gustav, <sup>3</sup>Carus, TU Dresden, 01307 Dresden, Germany

**PP34**

**A CELL INTRINSIC ROLE OF IL33 IN THE ESTABLISHMENT OF TREG CELL FUNCTION IN THE TUMOR MICROENVIRONMENT**

**Hatzioannou A<sup>1</sup>**, Banos A<sup>1</sup>, Fedonidis C<sup>1</sup>, Boumpas D<sup>1,2</sup>, Verginis P<sup>1</sup>

<sup>1</sup>Center of Clinical, Experimental Surgery & Translational Research, Biomedical Research Foundation Academy of Athens, Greece, <sup>2</sup>Joint Rheumatology Program, 4th Department of Internal Medicine, Attikon University Hospital, National and Kapodistrian University of Athens Medical School, Athens, Greece

# Remsima<sup>®</sup>

## Infliximab (100 mg)



Πριν τη συνταγογράφηση παρακαλούμε συμβουλευθείτε την Περίληψη Χαρακτηριστικών του Προϊόντος.

BE8021



**BIANEX** Α.Ε. ΒΙΟΜΗΧΑΝΙΑ ΦΑΡΜΑΚΩΝ  
ΕΤΑΙΡΕΙΑ ΤΟΥ ΟΜΙΛΟΥ ΓΙΑΝΝΑΚΟΠΟΥΛΟΥ

Γραφεία Επιστημονικής Ενημέρωσης

**ΑΘΗΝΑ:** Οδός Τατσοίου 146 71 Ν. Ερυθραία, Τηλ.: 210 8009111

**E-Mail:** mailbox@vianex.gr • **INTERNET:** <http://www.vianex.gr>

**ΘΕΣΣΑΛΟΝΙΚΗ:** Ακάδημου 113, Κόμβος Μακρυγιάννη  
Εύσμος Θεσσαλονίκης, ΤΚ 56224, Τηλ: 2310 861683

Βοηθήστε να γίνουν τα φάρμακα πιο ασφαλή και  
Ανοφίρτετε  
ΟΛΕΣ τις ανεπιθύμητες ενέργειες για  
ΟΛΑ τα φάρμακα  
Συμπληρώνοντας την «ΚΙΤΡΙΝΗ ΚΑΡΤΑ»

 HEALTHCARE  
**CELLTRION**



**Benlysta**  
(belimumab)



**ΟΝΟΜΑΣΙΑ ΦΑΡΜΑΚΕΥΤΙΚΟΥ ΠΡΟΙΟΝΤΟΣ:**

Benlysta 200 mg ενέσιμο διάλυμα σε προγεμισμένη συσκευή τύπου πένας

**ΠΟΙΟΤΙΚΗ ΚΑΙ ΠΟΣΟΤΙΚΗ ΣΥΝΘΕΣΗ:**

Κάθε 1 ml προγεμισμένης συσκευής τύπου πένας περιέχει 200 mg μπελιμουμάμπης

**Βοηθήστε να γίνουν τα φάρμακα πιο ασφαλή και  
Αναφέρετε ΟΛΕΣ τις ανεπιθύμητες ενέργειες για  
ΟΛΑ τα φάρμακα  
Συμπληρώνοντας την «ΚΙΤΡΙΝΗ ΚΑΡΤΑ»**



**GlaxoSmithKline**

Λ. Κηφισίας 266, 15232 Αθήνα, Τηλ: 2106882100  
www.glaxosmithkline.gr

Το εμπορικό σήμα ανήκει ή έχει παραχωρηθεί στον Όμιλο Εταιρειών GSK.  
© 2018 Όμιλος εταιρειών GSK ή δικαιούχος του Ομίλου GSK.

Πριν τη συνταγογράφηση συμβουλευτείτε την Περιληψη των Χαρακτηριστικών του Προϊόντος η οποία είναι διαθέσιμη κατόπιν αιτήσεως στην εταιρία.

# b

## BADGES

Your personal badge is your passport to the scientific sessions and poster area. For security purposes, delegate badges must be worn at all times.

# c

## CERTIFICATE OF ATTENDANCE

The Certificate of Attendance will be available for registered participants on Friday, May 17th 2019, at the registration desk.

## COFFEE BREAKS

Sponsored by



Coffee during official breaks will be served at the corresponding designated area.

## CURRENCY

The Greek currency is euro (EUR).

## CME CREDITS & EVALUATION

Please make sure you fill in the evaluation form which will be available at the registration desk. This is mandatory in order to obtain CME credits. Summer School has been accredited with **30 credits** of Continuing Medical Education, mutually acknowledged by P.M.S.

# d

## DELEGATES' FOLDERS

Delegates' folders with all printed material will be distributed at the registration desk.

## DISCLAIMER

The Meeting Organizers have taken all reasonable care in making arrangements for the 7th Summer School of Immunology. In the event of unforeseen disruptions, neither the OC nor their agents can be held responsible for any losses or damages incurred by delegates.

The Program is correct at the time of printing, but Organisers reserve the right to make alterations if and when deemed necessary. The Meeting Organizers act as agents only in securing accommodation, transportation and travel services, and shall in no event be liable for actions or omissions in the event of injury, damage,

loss, accident, delay or irregularity of any kind whatsoever during arrangements organised through contractors or by the employees of such contractors. Accommodation and transportation services are subject to the terms and conditions under which they are offered to the general public. Delegates should make their own arrangements with respect to personal insurance. The Meeting Organisers reserve the right to make changes as and when deemed necessary without prior notification of the parties concerned.

All disputes are subject to resolution under Greek Law.

e

### ELECTRICITY

The electrical power supply voltage in Greece is 220-240 Volts (U.S./Canada: 110-120 Volts).

f

### FOOD & BEVERAGES

Half board basis according to the program. Meals inside the hotel restaurant do not include beverages.

h

### HOTEL ACCOMMODATION

Secretariat staff at the registration desk will be happy to provide you with any information regarding your accommodation during the event.

i

### INSURANCE & LIABILITY

Participants are required to arrange their own insurance for cancellation, travel, loss of personal possessions, accident etc on their own behalf. The Organizers and the Organizing Secretariat CONVIN accept no liability.

### INTERNET ACCESS

Wi-Fi will be offered free of charge to all delegates throughout the venue.

e

**LANGUAGE**

The official language is English.

**LOST & FOUND**

Lost and found items can be recovered at the registration desk.

n

**NETWORKING EVENT**

Date	Time	Event	Venue
<b>Monday</b>   13 <sup>rd</sup> May 2019	19:30 – 22:00	Buffet Dinner	Hotel Restaurant Zefyros (Ground Level)
<b>Monday</b>   13 <sup>rd</sup> May 2019	21:00	Networking Event	Main Bar
<b>Tuesday</b>   14 <sup>th</sup> May 2019	19:30 – 21:00	Buffet Dinner	Hotel Restaurant Zefyros (Ground Level)
<b>Wednesday</b>   15 <sup>th</sup> May 2019	18:45 – 19:45	Buffet Dinner	Hotel Restaurant Zefyros (Ground Level)
<b>Thursday</b>   16 <sup>th</sup> May 2019	19:30 – 22:00	Buffet Dinner	Hotel Restaurant Zefyros (Ground Level)

o

**OPENING CEREMONY**

The Opening Ceremony & the Networking Event will take place on Monday, 13<sup>rd</sup> May 2019 at 21.00 at the main bar.

# p

## POSTER PRESENTATIONS (PP)

Poster Presentations are indicated with the code PP (+Number) and will be displayed throughout the duration of the Summer School in the lobby of the venue hotel. The number inside the parenthesis () refers to the abstract number.

The organizers are not responsible for any posters that have not been removed by the end of the Summer School.

## PRESENTATION FORMAT

Only presentation material in the form of MS-PowerPoint (\*.ppt and \*.pptx) with a screen ratio of 4:3 will be accepted. Please note that presentations attached to e-mails cannot be processed. Please remember to attach your video files, as they cannot be embedded into the presentation unless it is a .pptx file.

## PROGRAM CHANGES

The Organizers cannot assume liability for any changes in the Program due to external or unforeseen circumstances.

# S

## REGISTRATION DESK OPENING HOURS

The registration desk for the 7<sup>th</sup> Immunology Summer School will be located on the Ground Floor and will be open at the following times:

<b>Monday</b>   13 <sup>rd</sup> May 2019	15.00 - 19.30
<b>Tuesday</b>   14 <sup>th</sup> May 2019	09.00 - 19.15
<b>Wednesday</b>   15 <sup>th</sup> May 2019	09.00 - 18.00
<b>Thursday</b>   16 <sup>th</sup> May 2019	09.00 - 19.00
<b>Friday</b>   17 <sup>th</sup> May 2019	09.00 - 12.15

## SPEAKERS' DESK - AUDIOVISUAL

Sponsored by



Once on-site you may check and/or alter your presentation at the speaker's desk, at the latest 1 hour before your presentation. Our staff will take a final look at your material with you and will help you upload it.

Speakers' desk is located inside the main hall, and will be open during the meeting hours. It is equipped with a laptop and a data-projector.



### VENUE

#### AKS HINITSA BAY

Porto Heli, 210 61, Argolida, Peloponnese

Tel: +30 27540 57401

[www.akshotels.com/en/hinitsa-bay-hotel.html](http://www.akshotels.com/en/hinitsa-bay-hotel.html)



#### How to reach the AKS Hinitsa Bay Hotel (Venue)

##### By Car

Take the Attica Ring Road to the Athens-Patras National Highway leading to Corinth. After the Isthmus of Corinth take exit B toward Epidaurus to Kranidi and Porto Heli. After Kranidi, and having reached the main square of Porto Heli, turn left toward Costa. Once you have passed Porto Heli Bay, follow the signs, which will direct you to the right leading to the AKS HINITSA BAY hotel.

##### By Bus (included in the participation fee)

Only for those pre-registered

Departure on Monday 13<sup>th</sup> May, 2019 from the inside entrance of the Medical School of National & Kapodistrian University of Athens at 13.00 hrs. The duration of the trip is app. 4 hours.

Departure on Friday 17<sup>th</sup> May, 2019 from AKS Hinitsa Bay hotel to the Medical School and then Athens airport Eleftherios Venizelos at 13.00 hrs. The duration of the trip is app. 4 hours.

##### By Jetfoil (on request)

Jetfoils depart from the port of Piraeus at various hours during the day. Schedules available at the registration desk.

Departure point Gate E8 (5 min from the exit of the Suburban Railway on your left).

Duration: approximately 3 hrs.



### WEBSITE

The Summer School's website is [www.immunologysummerschool2019.gr](http://www.immunologysummerschool2019.gr) and it is updated with all the latest news.



abbvie

AMGEN®

GENESIS  
pharma

gsk

MSD  
INVENTING FOR LIFE

NOVARTIS

Pfizer

Lilly  
Φ Α Ρ Μ Α Σ Ε Ρ Β

BIANEE  
ΒΙΟΜΗΧΑΝΙΑ ΦΑΡΜΑΚΩΝ  
ΕΤΑΙΡΕΙΑ ΤΟΥ ΟΜΙΛΟΥ ΓΙΑΝΝΑΚΟΠΟΥΛΟΥ

# List of Speakers



**Agelopoulos Marios** | PHD, PRINCIPAL INVESTIGATOR, RESEARCHER D'-LECTURER LEVEL, CENTER OF BASIC RESEARCH BIOMEDICAL RESEARCH FOUNDATION OF THE ACADEMY OF ATHENS (BRFAA), GREECE

**Andreakos Evangelos** | INVESTIGATOR - PROFESSOR LEVEL, CENTER FOR CLINICAL, TRANSLATIONAL AND EXPERIMENTAL SURGERY, BIOMEDICAL RESEARCH FOUNDATION ACADEMY OF ATHENS

**Bombardieri Michele** | MD, PHD, FRCP, PROFESSOR OF IMMUNO-RHEUMATOLOGY, DEPUTY HEAD CENTRE FOR EXPERIMENTAL MEDICINE & RHEUMATOLOGY, WILLIAM HARVEY RESEARCH INSTITUTE BARTS AND THE LONDON SCHOOL OF MEDICINE & DENTISTRY, UNITED KINGDOM

**Dempsey Laurie** | SENIOR EDITOR NATURE IMMUNOLOGY, UNITED STATES OF AMERICA

**Fernández Jose-Javier** | PHD, CANDIDATE, DAÑO TISULAR E INMUNIDAD INNATA (IBGM-UVA), INSTITUTO DE BIOLOGIA Y GENETICA MOLECULAR-UNIVERSIDAD DE VALLADOLID, SPAIN

**Ginhoux Florent** | PRINCIPAL INVESTIGATOR, SINGAPORE IMMUNOLOGY NETWORK (SIGN) AGENCY FOR SCIENCE, TECHNOLOGY AND RESEARCH (A\*STAR), SINGAPORE

**Grigoriadis Nikolaos** | MD, PHD, PROFESSOR OF NEUROLOGY, DEPARTMENT OF NEUROLOGY II, ARISTOTLE UNIVERSITY OF THESSALONIKI, GREECE

**Hernandez Cervantes Arturo** | PHD, INSTITUT CURIE, FRANCE

**Kontoyiannis Dimitris** | INVESTIGATOR - PROFESSOR LEVEL, SCHOOL OF BIOLOGY, ARISTOTLE UNIVERSITY OF THESSALONIKI INSTITUTE OF IMMUNOLOGY, BIOMEDICAL SCIENCES RESEARCH CENTER "ALEXANDER FLEMING", GREECE

**Mauri Claudia** | PROFESSOR, CENTRE FOR RHEUMATOLOGY, DIVISION OF MEDICINE, UNIVERSITY COLLEGE LONDON, UNITED KINGDOM

**O'Neill Luke** | PROFESSOR OF BIOCHEMISTRY IN THE SCHOOL OF BIOCHEMISTRY AND IMMUNOLOGY AT TRINITY COLLEGE DUBLIN, IRELAND

**Peristeri Athanasia-Marina** | UNIVERSITY OF THESSALY, LARISSA, GREECE

**Pers Jacques-Olivier** | PROFESSOR (DDS, PHD), DIRECTOR OF THE INSERM UNIT "B CELLS AND AUTOIMMUNITY", UNIVERSITÉ DE BREST, INSERM, FRANCE

**Piper Christopher** | PHD STUDENT, UNIVERSITY COLLEGE LONDON, UNITED KINGDOM

**Prados-Martin Alejandro** | B.S.R.C. ALEXANDER FLEMING, GREECE

**Quezada Sergio** | PROFESSOR OF CANCER IMMUNOLOGY & IMMUNOTHERAPY IMMUNE REGULATION & TUMOUR IMMUNOTHERAPY LAB CRUK - SENIOR CANCER RESEARCH FELLOW UCL CANCER INSTITUTE UNIVERSITY COLLEGE LONDON, UNITED KINGDOM

**Sideras Paschalis** | INVESTIGATOR-DIRECTOR, PROFESSOR LEVEL, CENTER OF IMMUNOLOGY AND TRANSPLANTATION, BIOMEDICAL RESEARCH FOUNDATION ACADEMY OF ATHENS, GREECE

**Soumelis Vassili** | PROFESSOR, INSERM U976, HÔPITAL SAINT-LOUIS, PARIS

**Stergiou Ioanna** | MD, RESIDENT IN HAEMATOLOGY, PATHOPHYSIOLOGY DEPARTMENT, SCHOOL OF MEDICINE, NATIONAL AND KAPODISTRIAN UNIVERSITY OF ATHENS, GREECE

**Swirski Filip** | PRINCIPAL INVESTIGATOR, MGH CENTER FOR SYSTEMS BIOLOGY, MASSACHUSETTS GENERAL HOSPITAL ASSOCIATE PROFESSOR, HARVARD MEDICAL SCHOOL, UNITED STATES OF AMERICA

**Tavernarakis Nektarios** | CHAIRMAN OF THE BOARD OF DIRECTORS AT THE FOUNDATION FOR RESEARCH AND TECHNOLOGY-HELLAS (FORTH), RESEARCH DIRECTOR AT THE INSTITUTE OF MOLECULAR BIOLOGY AND BIOTECHNOLOGY (IMBB), PROFESSOR OF MOLECULAR SYSTEMS BIOLOGY AT THE MEDICAL SCHOOL OF THE UNIVERSITY OF CRETE, HERAKLION, GREECE

**Thanopoulou Kalliopi** | PHD, POSTDOCTORAL FELLOW IMMUNOGENETICS LABORATORY CENTER FOR CLINICAL, EXPERIMENTAL SURGERY, & TRANSLATIONAL RESEARCH BIOMEDICAL RESEARCH FOUNDATION ACADEMY OF ATHENS, GREECE

**Tsoumakidou Maria** | MD PHD, GROUP LEADER, DIVISION OF IMMUNOLOGY, BSRC ALEXANDER FLEMING, GREECE

**Tzioufas Athanasios** | PROFESSOR-DIRECTOR, DEPARTMENT OF PATHOPHYSIOLOGY MEDICAL SCHOOL, UNIVERSITY OF ATHENS, GREECE

**Verginis Panayotis** | INVESTIGATOR - LECTURER LEVEL, CENTER OF IMMUNOLOGY AND TRANSPLANTATION, BIOMEDICAL RESEARCH FOUNDATION ACADEMY OF ATHENS, GREECE

**Xanthou Georgina** | INVESTIGATOR - ASSISTANT PROFESSOR LEVEL, CENTER FOR BASIC RESEARCH, BIOMEDICAL RESEARCH FOUNDATION ACADEMY OF ATHENS, GREECE

# Αλλάξτε τη ζωή των ασθενών σας με ILARIS®<sup>2-7</sup>



Με ενδείξεις<sup>1</sup>

Στη νόσο **Still**

(Νόσος Still ενηλίκων & Συστηματική Νεανική Ιδιοπαθής Αρθρίτιδα)

Στον **FMF**

(Οικογενής Μεσογειακός Πυρετός)

Στα σύνδρομα **CAPS, TRAPS & HIDS/ΜΚΔ**

Στην **Ουρική Αρθρίτιδα**

Πριν τη συνταγογράφηση συμβουλευθείτε την Περίληψη Χαρακτηριστικών του Προϊόντος

**Βιβλιογραφία:** 1. ILARIS® Περίληψη Χαρακτηριστικών Προϊόντος. Τελευταίο ενημέρωση 13/09/2018. 2. Laskari K, et al. J Rheumatol 2017; 44(1):102-109. 3. Kone-Paut I, et al. Pediatric Rheumatology 2017; 15(Suppl 2):P176. 4. Ozdogan H & Ugurlu S. Expert Rev Clin Immunol 2017; 13(5):393-404. 5. Ruperto N, et al. NEJM 2012; 367(25):2396-2406. 6. Shenoi S et al. Clin Exp Rheumatol. 2018 Mar 21. [Epub ahead of print]. 7. Feist E, et al. Clin Exp Rheumatol 2018. Epub ahead of print.

 **NOVARTIS**

Novartis (Hellas) A.E.B.E.  
Τ.Θ.52001,  
144 10 Μεταμόρφωση,  
τηλ.: 210 28 11 712  
www.novartis.gr

Γραφείο Θεσσαλονίκης  
12ο χλμ. Θεσσαλονίκης - Ν. Μουδανιών  
570 01 Θέρμη, 2ος όροφος, Κτήριο Βράνας  
τηλ.: 2310 424 039

ΦΑΡΜΑΚΟΕΠΙΓΡΑΦΗ: 210 2828812

  
**ILARIS®**  
(canakinumab)  
150 mg υποδόρια ένεση





---

# Notes

A series of horizontal dotted lines spanning the width of the page, intended for writing notes.

A series of horizontal dotted lines for writing notes.

---

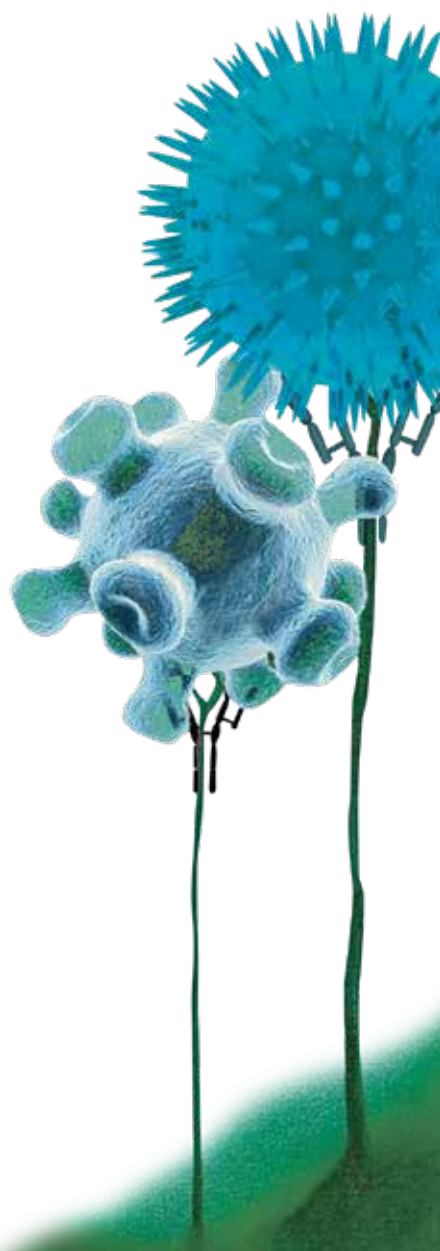
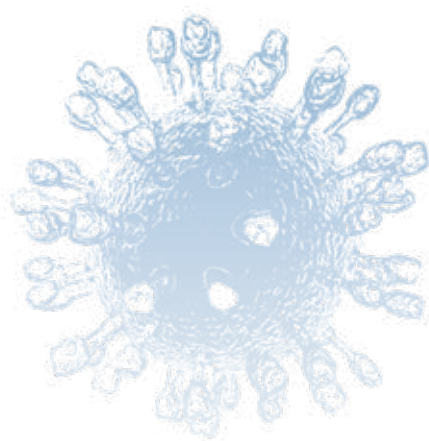
# Notes

A series of horizontal dotted lines spanning the width of the page, intended for writing notes.



A series of horizontal dotted lines for taking notes.

A series of horizontal dotted lines spanning the width of the page, intended for writing notes.





**Benepali**<sup>®</sup>  
Etanercept

Η ΕΤΑΝΕΡΣΕΠΤΗ ΑΠΟ ΤΗΝ BIOGEN

Περαιτέρω πληροφορίες διατίθενται από τη Genesis Pharma.

Βοηθήστε να γίνουν τα φάρμακα πιο ασφαλή και αποτελεσματικά  
ΟΛΕΣ τις ανεπιθύμητες ενέργειες για  
ΟΛΑ τα φάρμακα  
Συμπληρώνονται την "ΚΙΤΡΙΝΗ ΚΑΡΤΑ"

ΟΝΟΜΑΣΙΑ ΤΟΥ ΦΑΡΜΑΚΕΥΤΙΚΟΥ ΠΡΟΪΟΝΤΟΣ: Benepali 50mg ενέσιμο διάλυμα σε προγεμισμένη σύριγγα. Benepali 50 mg ενέσιμο διάλυμα σε προγεμισμένη συσκευή τύπου πένας. ΠΟΙΟΤΙΚΗ ΚΑΙ ΠΟΣΟΤΙΚΗ ΣΥΝΘΕΣΗ: Κάθε προγεμισμένη σύριγγα ή προγεμισμένη συσκευή τύπου πένας περιέχει 50 mg ετανερόεπτη. ΚΑΤΟΧΟΣ ΤΗΣ ΑΔΕΙΑΣ ΚΥΚΛΟΦΟΡΙΑΣ: Samsung Bioepis NL B.V., Olof Palmestraat 10, 2616 LR Delft, Ολλανδία

 **Biogen.**

Λ. Κηφισίας 274, 15232 Χαϊδάνδρι, Αθήνα  
Τηλ.: 210 8771500, Fax: 210 6891918  
e-mail: [info@genesishpharma.com](mailto:info@genesishpharma.com)  
[www.genesishpharma.com](http://www.genesishpharma.com)

 **GENESIS**  
pharma