

Public Symposium on Sports Head Injury and Concussion

Wednesday 4th September 09:30 to 11:00

📍 Cambridge Corn Exchange

Learn more about concussion in sport:

- How to recognise it
- How to treat it
- How to get back to school, work and sport

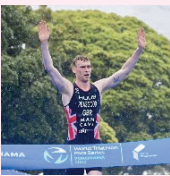
INTRODUCTION

Adel Helmy

Adel Helmy is a Consultant Neurosurgery and Associate Professor of Neurosurgery, at the University of Cambridge His academic interest is in the role of inflammation after head injury and his clinical work is in neurotrauma, vascular neurosurgery and skull base neurosurgery.

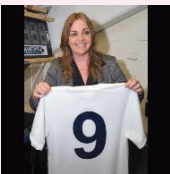


SPEAKERS



George Peasgood Double Paralympian in Triathlon and Cycling, Olympics and Paralympics

Double Paralympian in Triathlon (PTS5 category) and Cycling (C4 category), George won Silver and Bronze in Tokyo 2020. In 2022, he retained his Para-Cycling Time Trial World title and a few days later won Bronze in the Para-Cycling Road Race. Not to be deterred by having his leg mowed over as a toddler, George was encouraged to ignore his physical challenges (for example, 5 sizes shoe discrepancy) and be as active as possible. George crashed his bike in October 2022, suffering a grade 3 diffuse axonal injury and spent 7 weeks in a deep coma. He continues to defy medical convention, returning to swim, cycle and run activity on a daily basis, and even rode his bike outside recently.



Dawn Astle Founder of the Jeff Astle Foundation, Football

Dawn Astle is the daughter of West Bromwich Albion and England centre-forward Jeff Astle. The tragic death of Jeff Astle at the age of only 59 and the findings made post mortem raised serious concerns for the game of football and sport in general. Jeff was the first British professional footballer who was diagnosed with Chronic Traumatic Encephalopathy, a disease caused by Repetitive Head Impacts. Dawn talks honestly and movingly about Jeff's life, his death, and their family's journey to get football to acknowledge and address the tragedy of dementia in former professional footballers. Her journey as football's most fierce campaigner led to the Justice for Jeff campaign where 28,000 West Bromwich Albion fans forced the footballing authorities to sit up and listen. She and her family launched the Jeff Astle Foundation in 2015. Her work pushed the game into commissioning the FIELD study which found that professional footballers were 3.5 times the risk of neurodegenerative diseases comparative to the general population. Since, she has joined the players union, establishing a new dedicated brain health department. They have launched a new support fund that supports families with financial assistance, whether it be care costs, home adaptations or carer relief. Today, because of Dawn, the sport is to mandate education for all professional players.



Simon Kemp Rugby Football Union

Associate Professor Simon Kemp is a Specialist Sports Medicine Doctor and the Medical Services Director for the Rugby Football Union, the National Governing Body for the game in England. He has worked as a team physician in Rugby, Soccer (Fulham Football Club) and Basketball (English Basketball Team) and was the England team doctor for the Rugby World Cup campaigns in 2003 and 2007. His research interests focus on injury surveillance and concussion prevention in rugby. He is an author of 100 peer reviewed research papers, the majority with a focus on injury surveillance and concussion including the World Rugby and IOC consensus statements on injury surveillance. He is also a member of the World Rugby, FIFA and FA Concussion Expert Advisory Panels and the DCMS expert group that produced the UK grassroots concussion guidance released in April 23



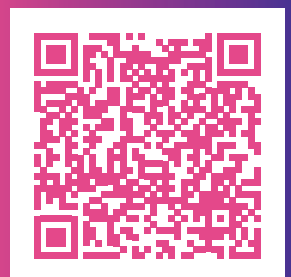
Peter Hutchinson Formula 1 and Motorsport

Professor Peter Hutchinson is Head of the Division of Academic Neurosurgery at the University of Cambridge and Honorary Consultant Neurosurgeon at Addenbrooke's Hospital, Cambridge. He leads the NIHR Global Health Research Group on Acquired Brain and Spine Injury and the NIHR HealthTech Research Centre for Brain Injury. He is also Director of Clinical Research at the Royal College of Surgeons of England and President Elect of the Society of British Neurological Surgeons and the International Neurotrauma Society. He was awarded the Olivecrona Prize for his work on cerebral metabolism in acute brain injury and the Vilhelm Magnus Medal for his work on traumatic brain injury. He has a clinical and research interest in head and traumatic brain injury including concussion. This includes rugby as a member of the England Rugby Football Union Independent Concussion Panel, and motorsport as Chief Medical Officer for the Formula One British Grand Prix and member of the Motorsport UK Medical Panel. He been involved in Motorsport medicine for over 30 years in terms of rallying and circuit racing. His current role includes leading the medical team for the British Grand Prix at Silverstone, research into sport-related brain injury and developing the guidelines for the diagnosis and management of concussion in Motorsport.

Chairs: David Sharp & Willie Stewart

Professor David Sharp is a neurologist and Director of the Care Research and Technology Centre within the UK Dementia Research Institute. He leads a translational research programme investigating traumatic brain injury (TBI) and dementia, working within a multi-disciplinary team with expertise in neurology, neuroendocrinology, engineering, neuropsychiatry and neuropsychology. He provides out-patient TBI services at St Mary's Major Trauma Centre and the Institute of Sports Exercise & Health (ISEH). The Care Research and Technology Centre is conducting an innovative, interdisciplinary programme, mobilising Dementia researchers and clinicians to deliver innovative technologies that support people living with dementia. He is Associate Editor of the journal *Brain*, Secretary and Treasurer for the Guarantors of Brain Charity. He is also Chair of the TBI Advisory Group for the Association of British Neurologists and is a member of the Sports Concussion Independent Advisory Group of the Rugby Football Union.

Prof Willie Stewart is Consultant Neuropathologist at the Queen Elizabeth University Hospital Glasgow and Honorary Professor at the University of Glasgow and the University of Pennsylvania. He leads multiple research programmes exploring traumatic brain injury biology, pathology and outcomes, and is Co-PI on the multi-center collaborations CONNECT-TBI and TBI-REPORTER. His research has a particular focus on lifelong consequences of TBI and the relationship to risk of neurodegenerative disease



Scan to Book
Tickets