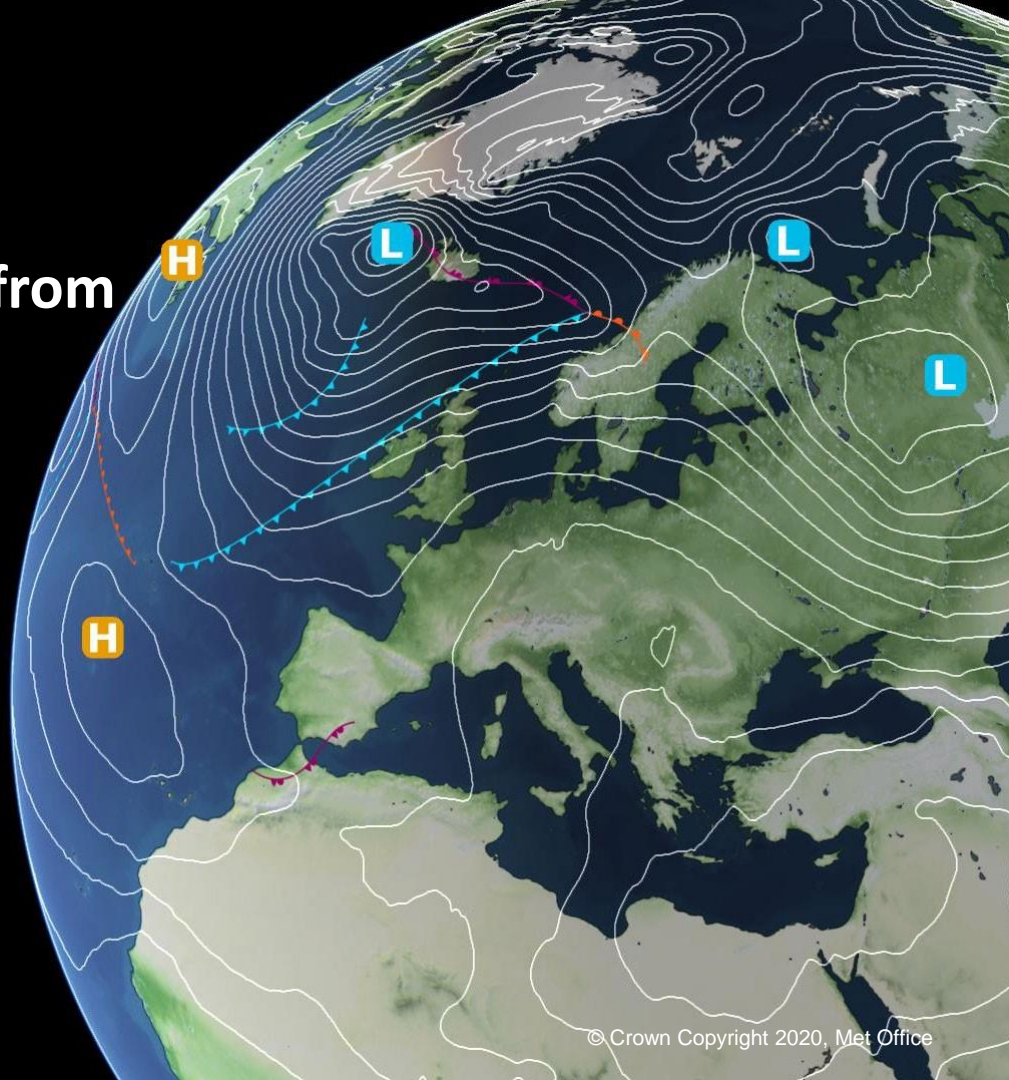


# Operational impact and quality assessment of L2B HLOS winds from Aeolus at the Met Office

Gemma Halloran, Mary Forsythe and James Cotton

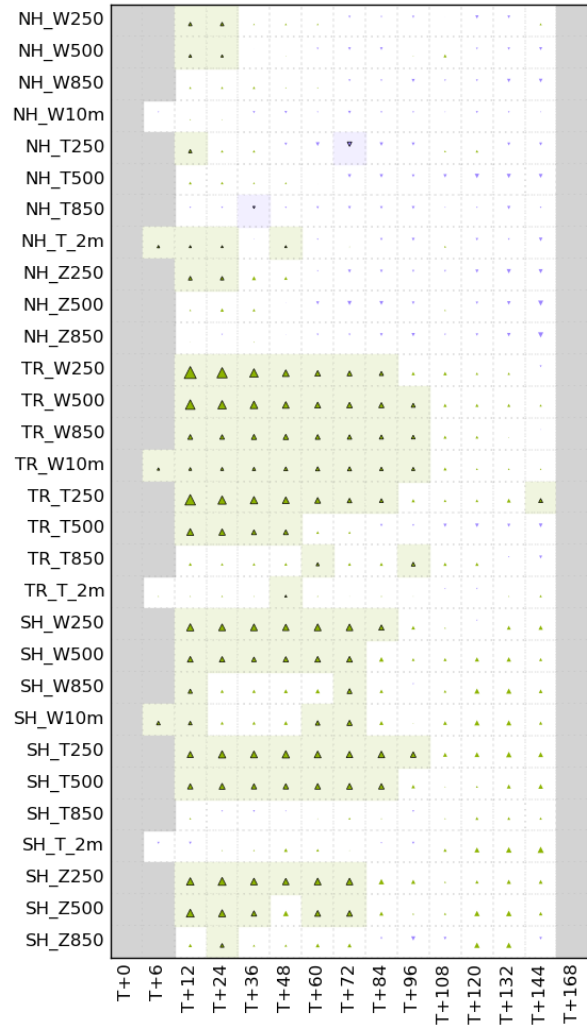
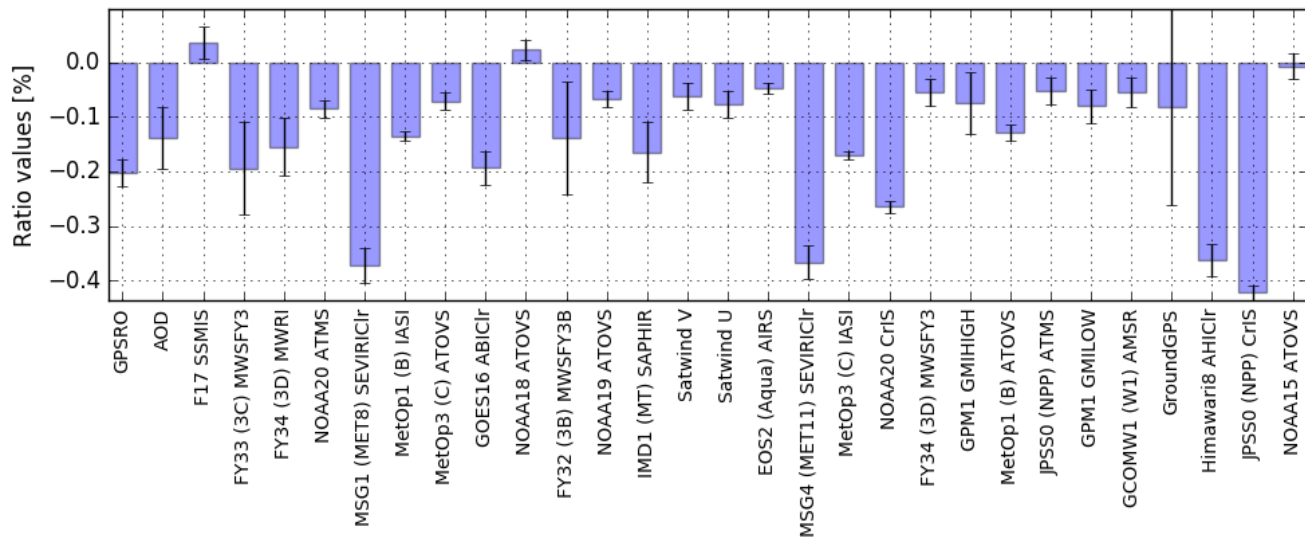


# Since the last meeting...

- Mie channel winds made operational in December 2020
- Finished experiments adding Rayleigh channel winds...

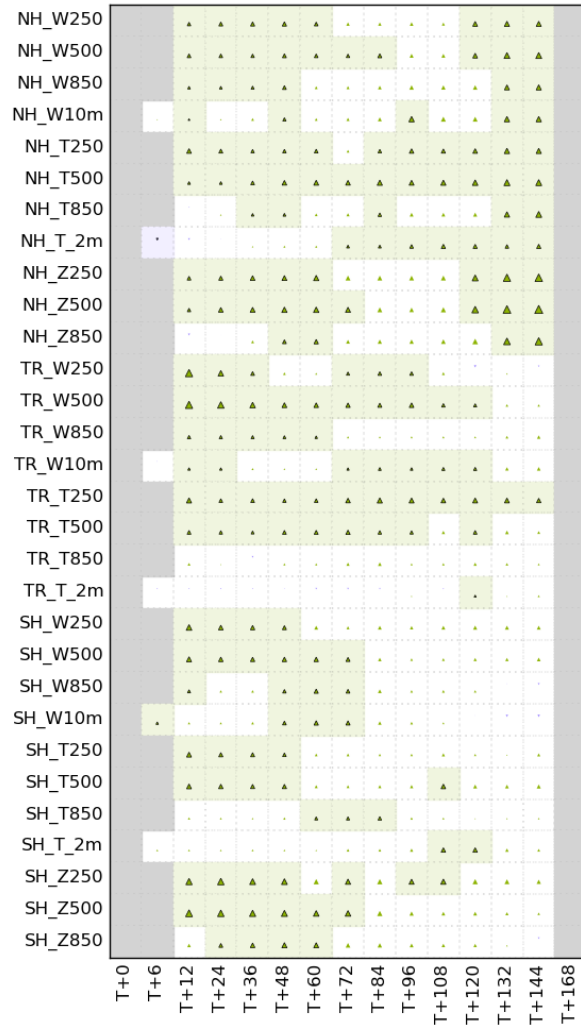
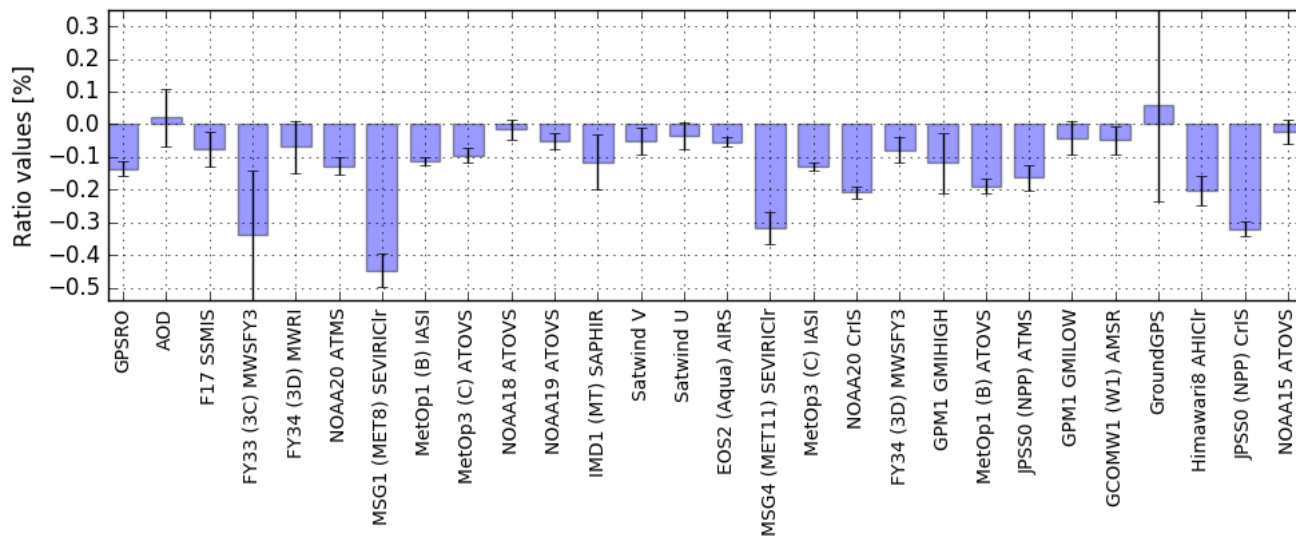
# Final Rayleigh channel results

- 5<sup>th</sup> May to 19<sup>th</sup> July 2020
- Control contains Mie channel winds
- Overall 0.22% reduction in RMS differences



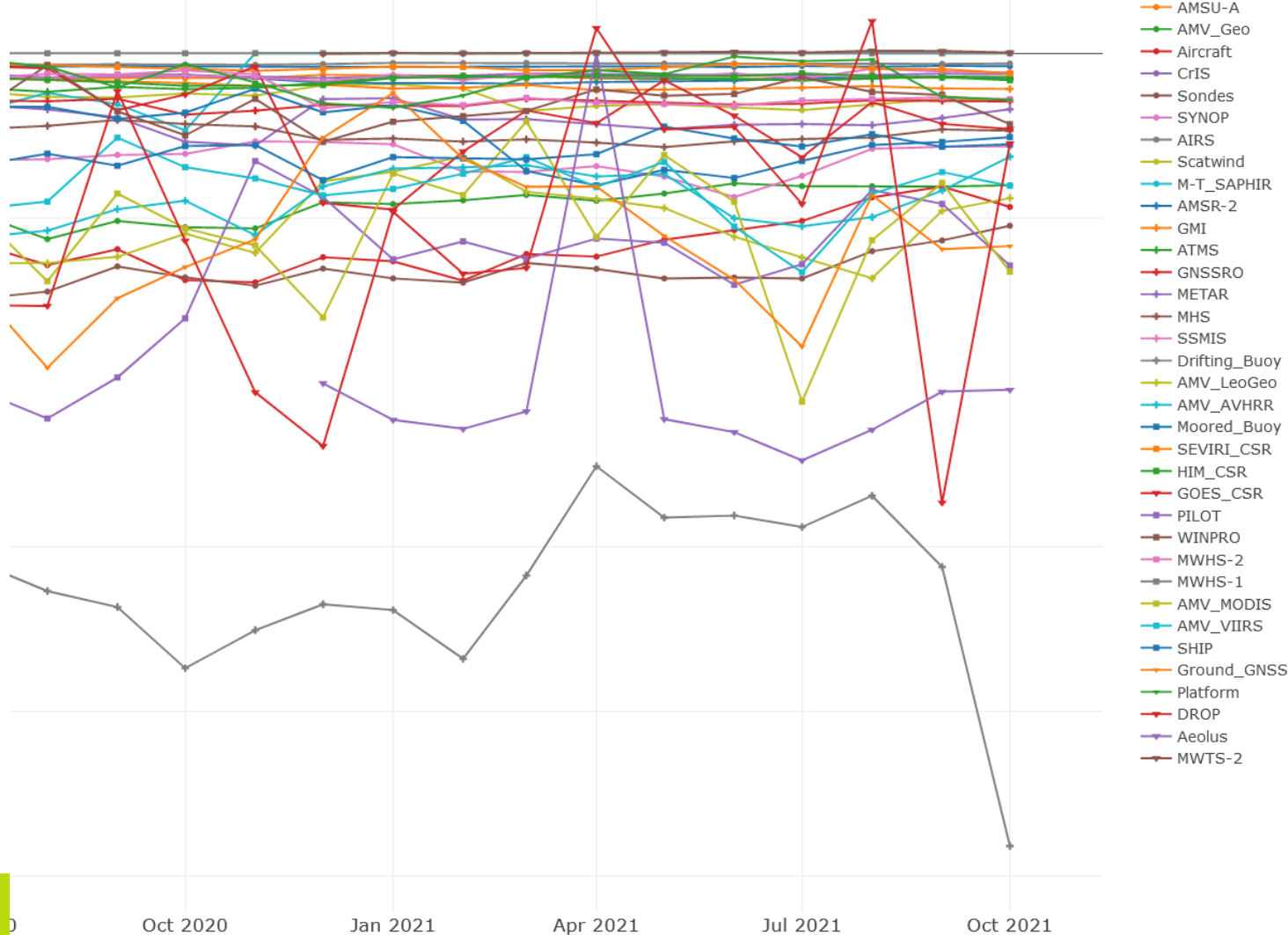
# Final Rayleigh channel results

- 9<sup>th</sup> September to 8<sup>th</sup> December 2020
- Control contains Mie channel winds
- Overall 0.3% reduction in RMS differences



# FSOI

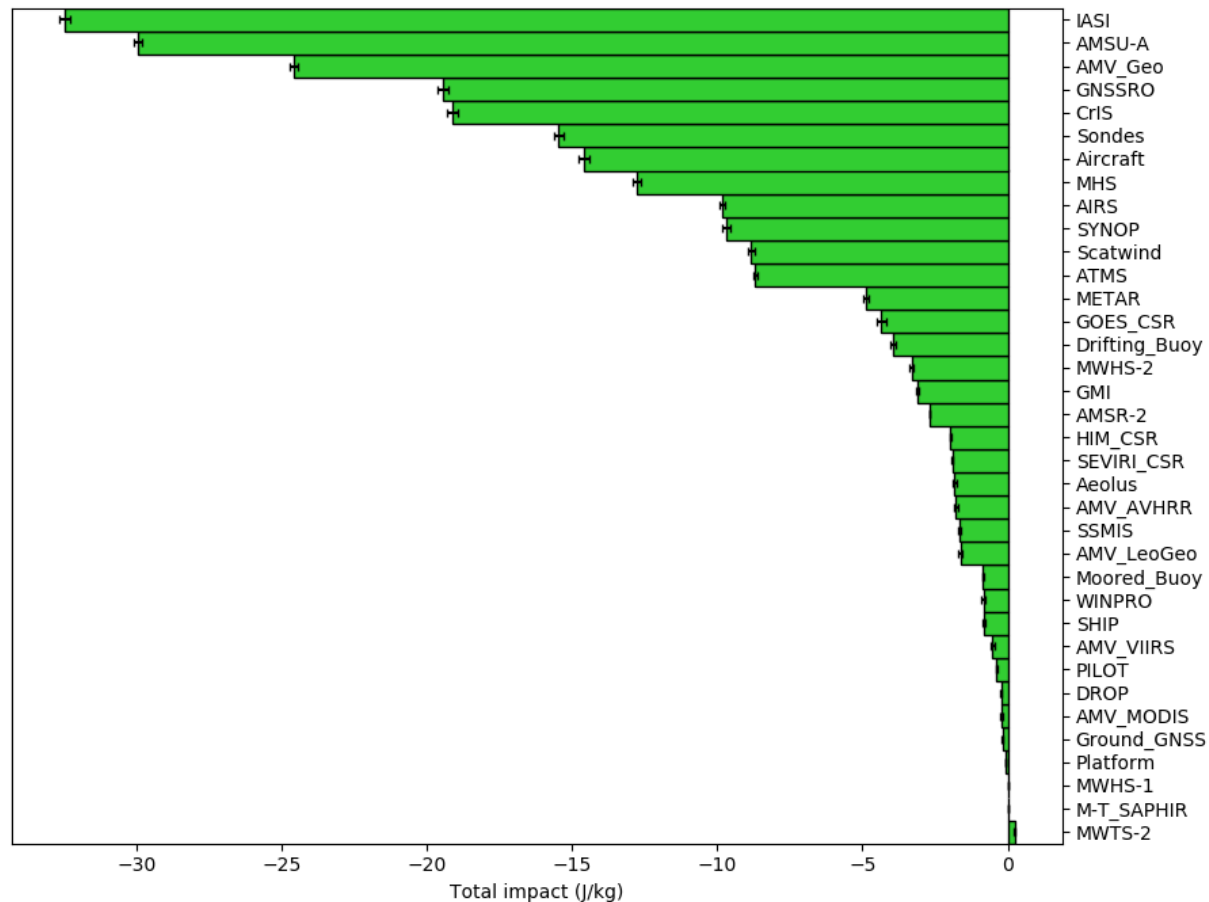
Mean Impact  
per  
observation  
(J/kg)



# FSOI

Total Impact (J/kg)

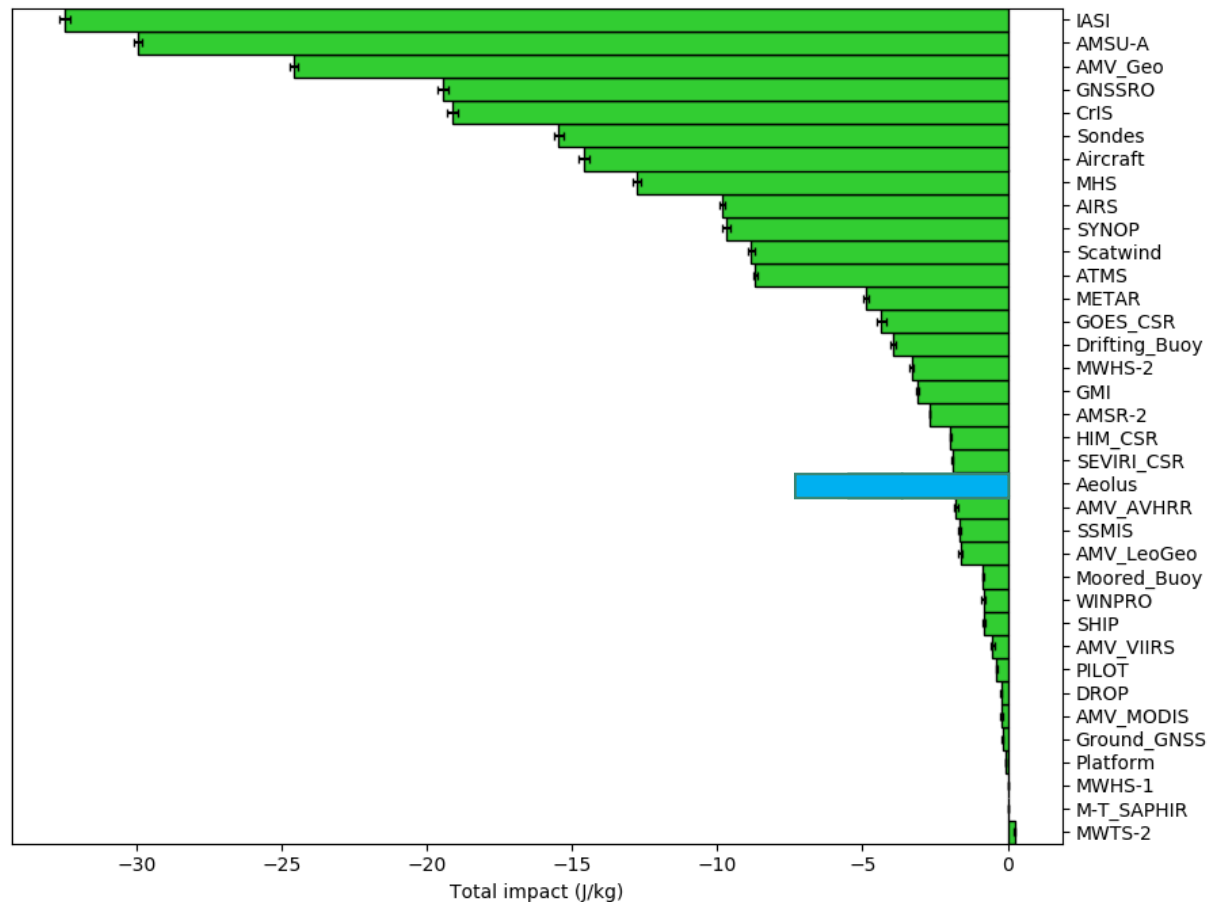
September 2021



# FSOI

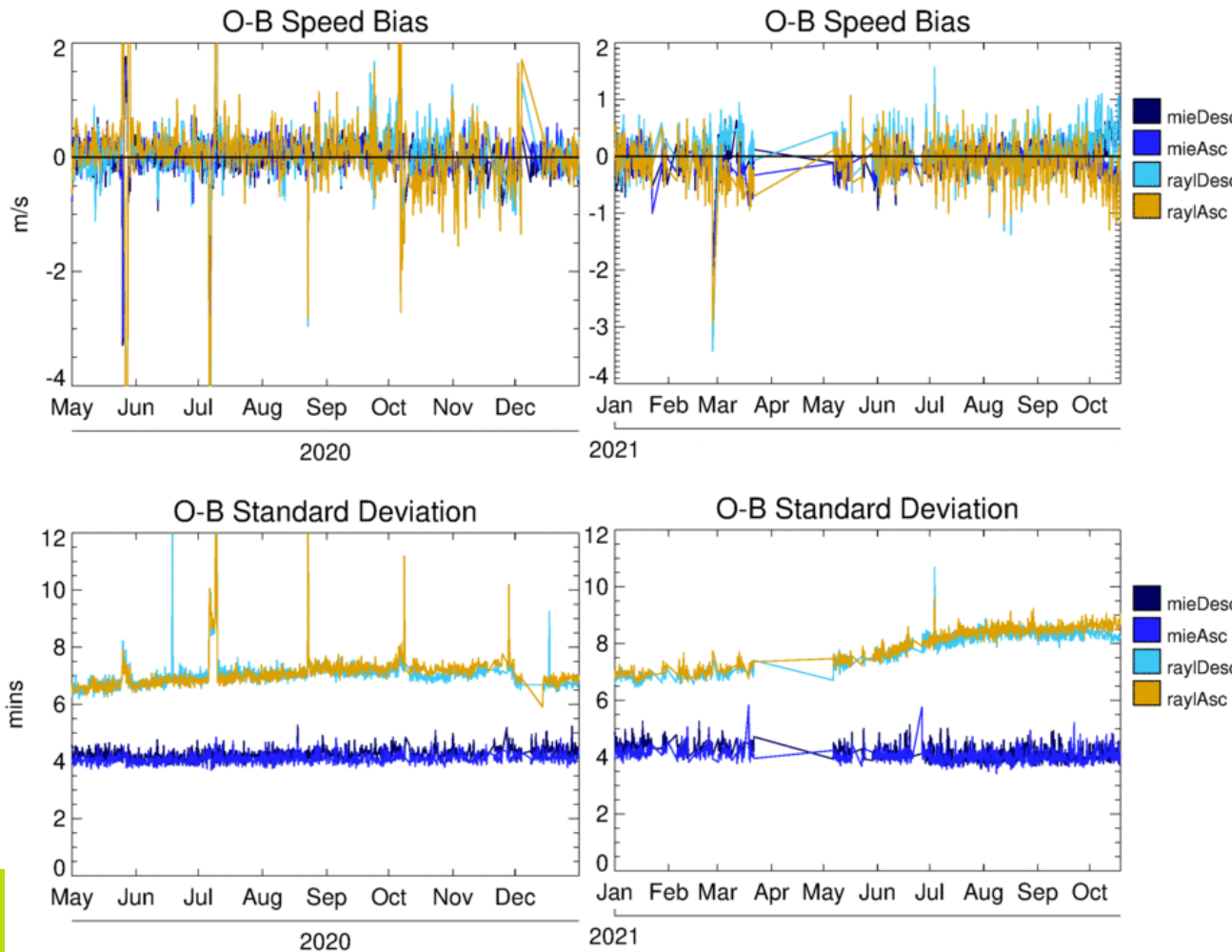
Total Impact (J/kg)

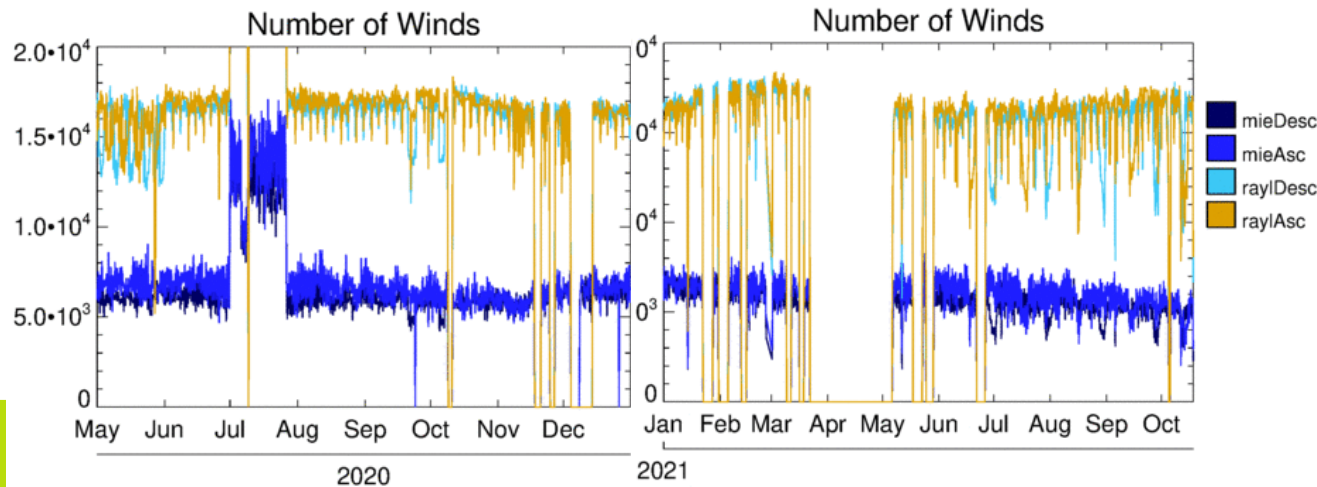
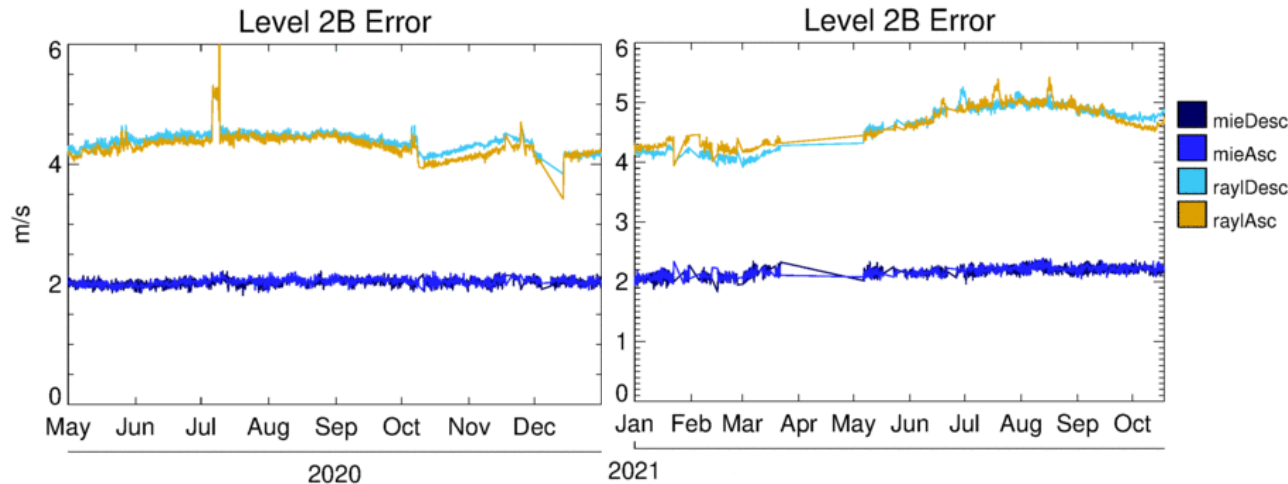
September 2021



# Aeolus through time...







# Met Office: Time Series Aeolus

