



Session 3 – The WORLDSOILS SOC on the WEB GUI demonstration

Laura Poggio



ESA Symposium on Earth Observation for Soil Protection and Restoration



ISRIC



UCLouvain



ARISTOTLE UNIVERSITY OF THESSALONIKI



CZECH UNIVERSITY OF LIFE SCIENCES PRAGUE



GFZ Helmholtz-Zentrum POTSDAM



TEL AVIV UNIVERSITY תל אביב



Contract 400131273/20/I-NB

DEMO Graphical User Interface



DEMO Graphical User Interface

Main window

User should immediately see:

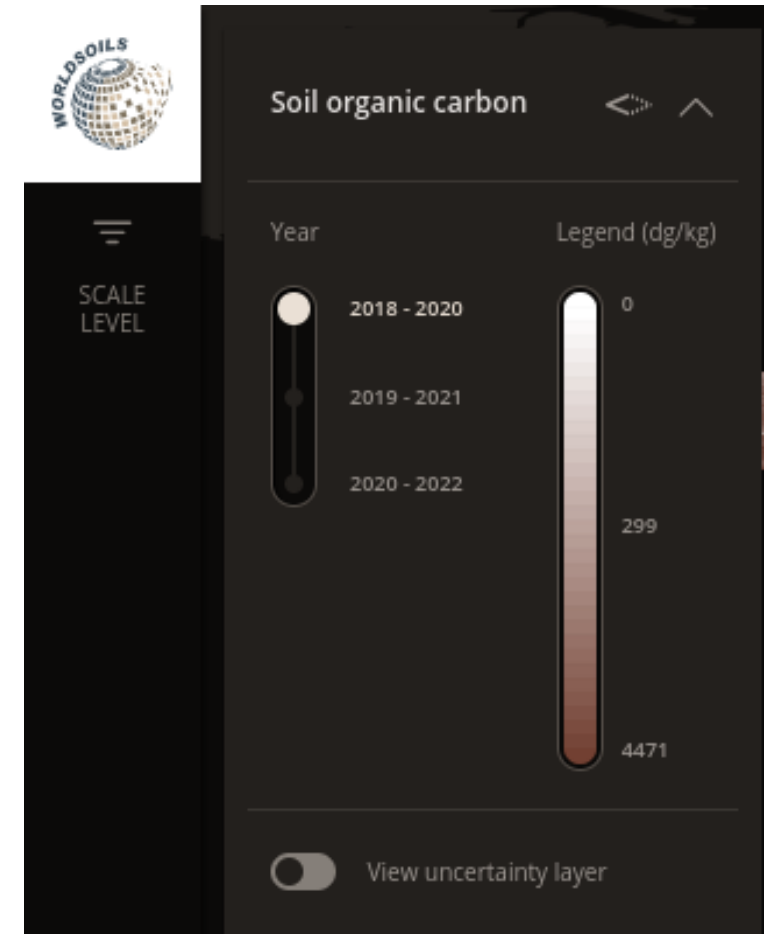
- Background layer of continental Europe in black
- Soil organic carbon map with brown colour scale
- 3 panels:
 - Legend panel at the top left of view port
 - Left vertical panel
 - Right Horizontal panel at the top right of view port



DEMO Graphical User Interface

Legend panel content

- Opacity button - Allows to change the opacity of the visualised layer
- Open and close map legend button. Default is open and visible
- Soil carbon legend - Colour range in brown
- Uncertainty layer button - Loads the uncertainty layer and legend



DEMO Graphical User Interface

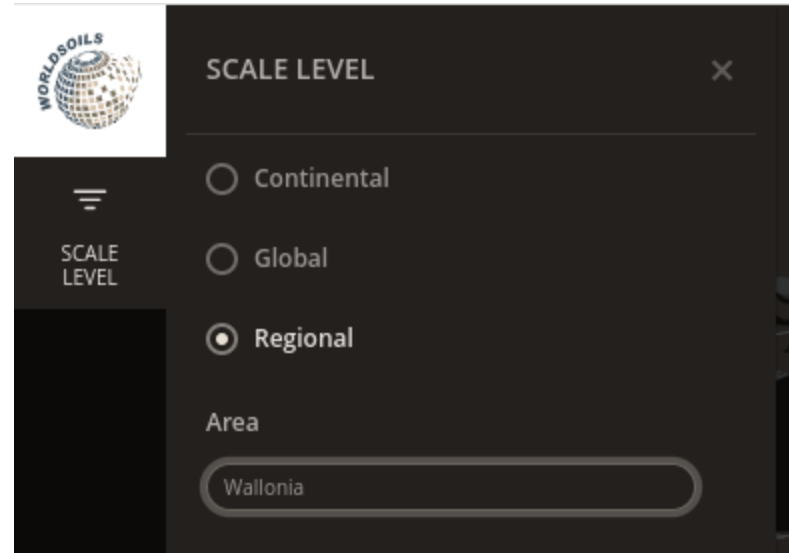
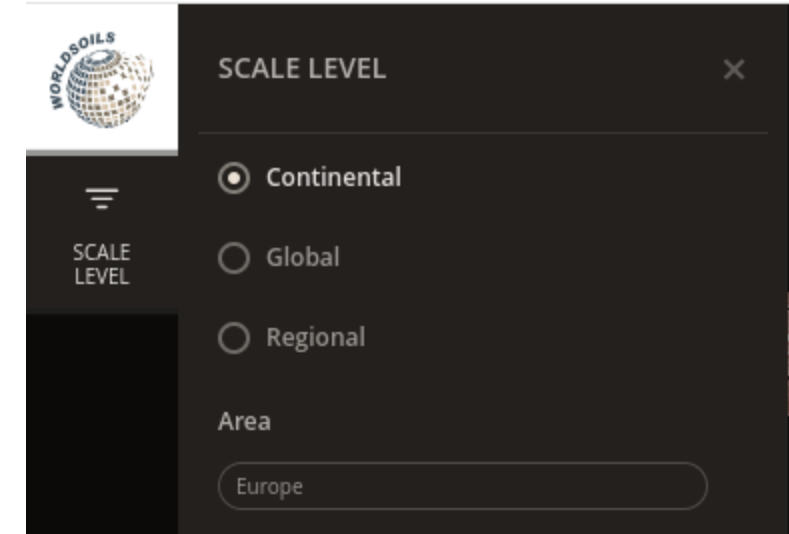
Scale level panel content

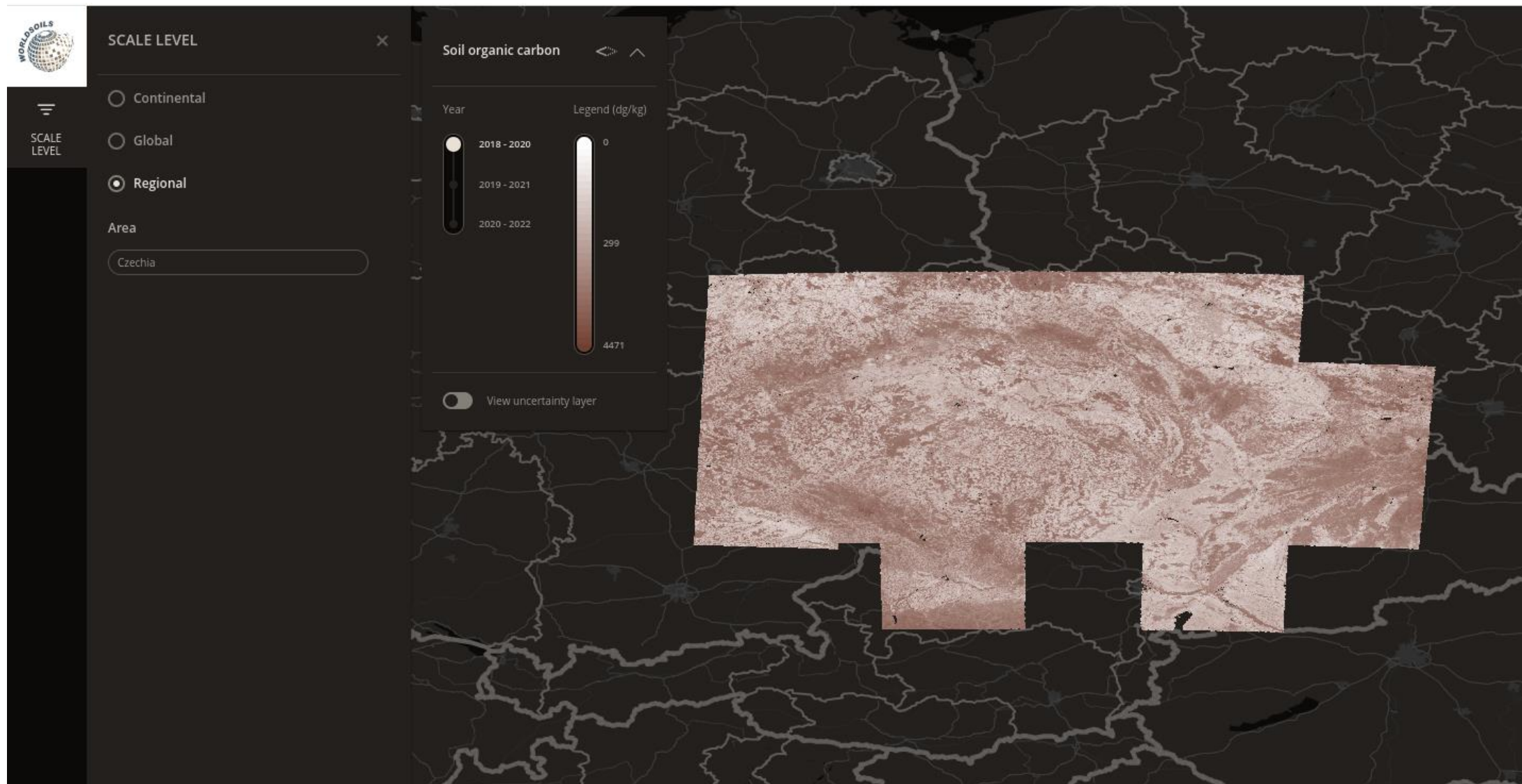
The scale level panel is activated by clicking on scale icon.

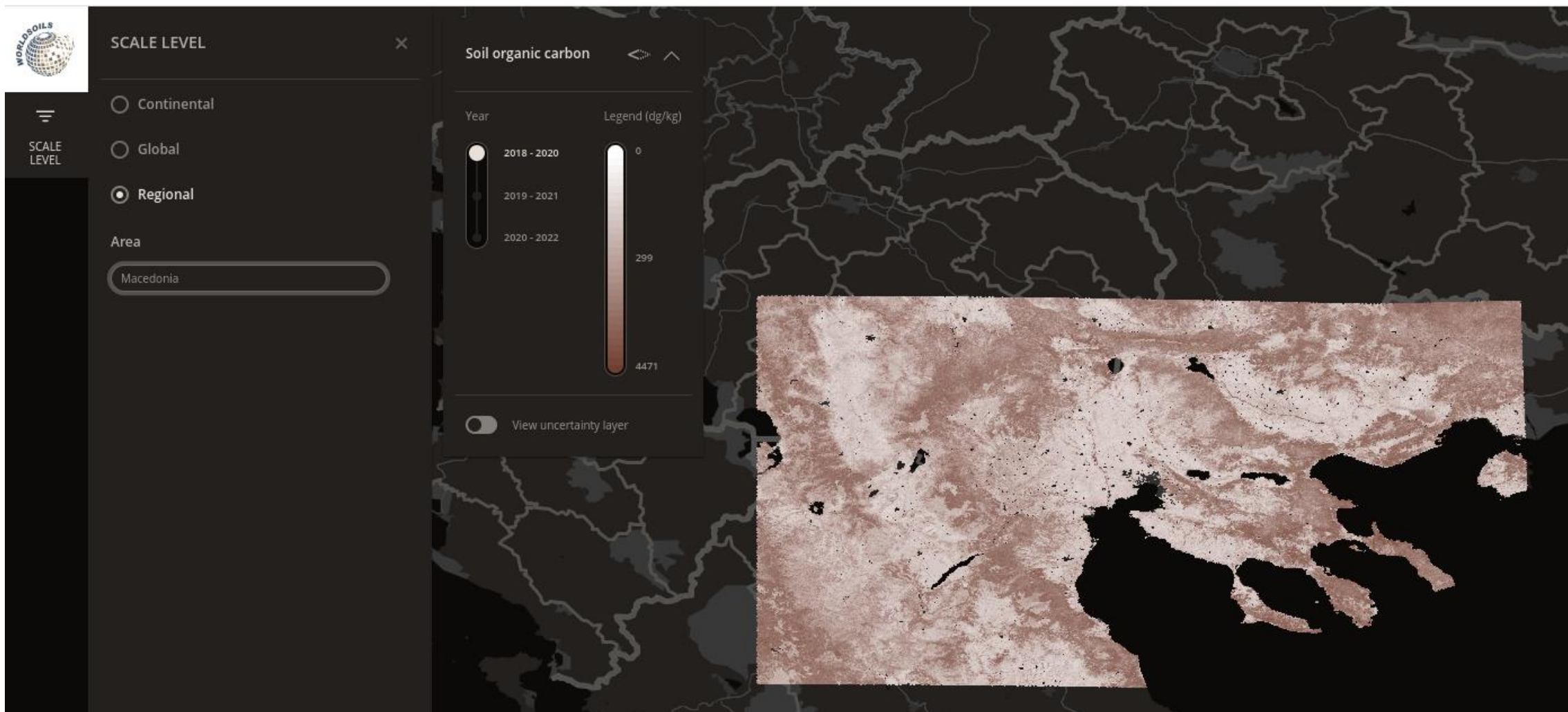
Options:

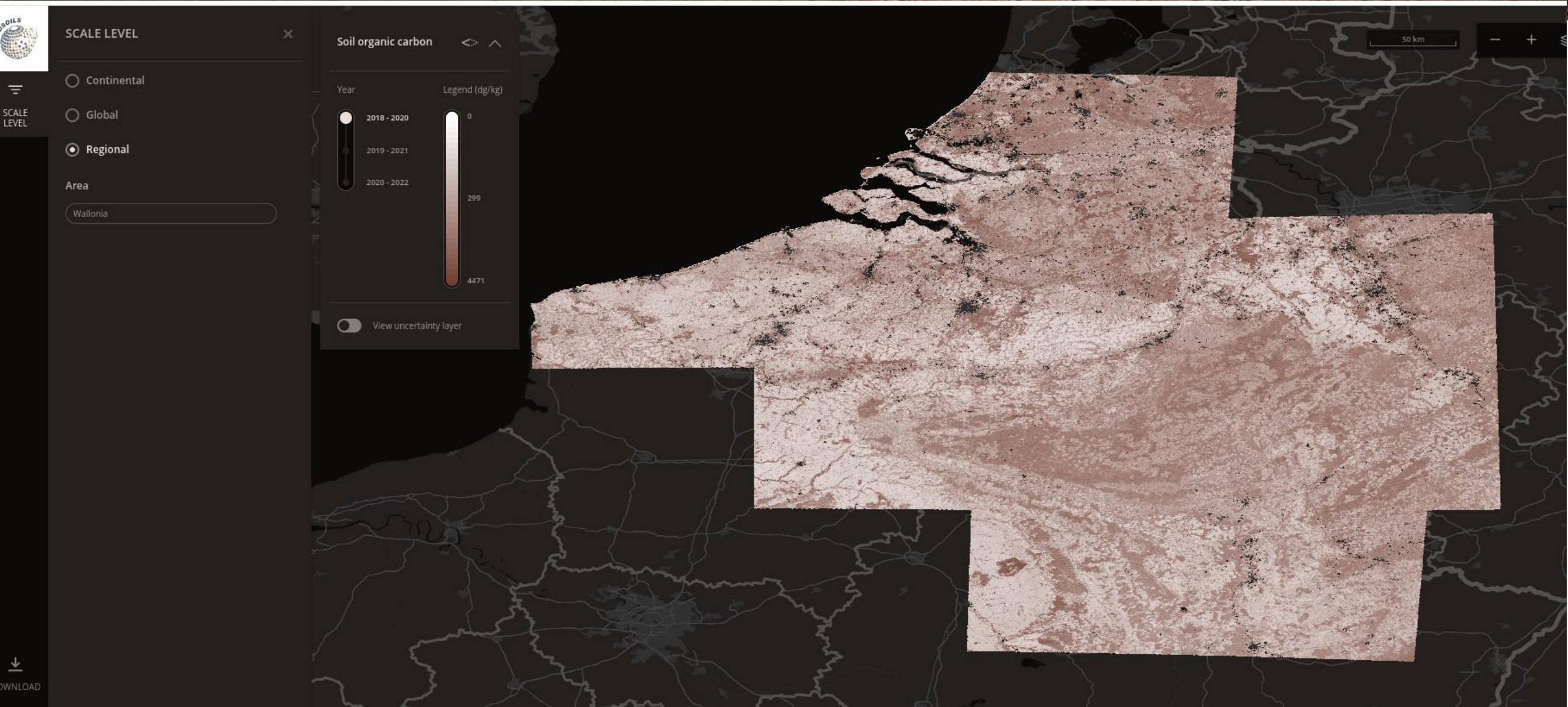
- Continental
 - Area: Europe
- Regional:
 - Wallonia,
- Global

Choosing different scale levels trigger maps change zooms into the specific areas









DEMO Graphical User Interface

Download data panel content

Scale level	Continental, Regional or Global
Area	Choose the area within the scale level
Year	
Type	SOC content (mean) or uncertainty
Longitude/Latitude	Only for global. Limited to two by two degrees size

A screenshot of the 'DOWNLOAD DATA' panel in the Worldsoils graphical user interface. The panel is dark-themed and contains several sections for data selection. At the top right, there are icons for help and close. The 'Scale level' section has three buttons: 'continental' (selected), 'global', and 'regional'. The 'Area' section has a text input field containing 'Europe'. The 'Year' section has a text input field containing '2018 - 2020'. The 'Type' section has a text input field with the placeholder text 'Please select a layer type'. The 'Longitude' section has two input fields: 'MIN' with '8' and 'MAX' with '10'. The 'Latitude' section has two input fields: 'MIN' with '50' and 'MAX' with '52'. At the bottom, there is a 'Download' button. On the left side of the panel, there is a 'SCALE LEVEL' label and a hamburger menu icon.

DEMO Graphical User Interface

Info panel content

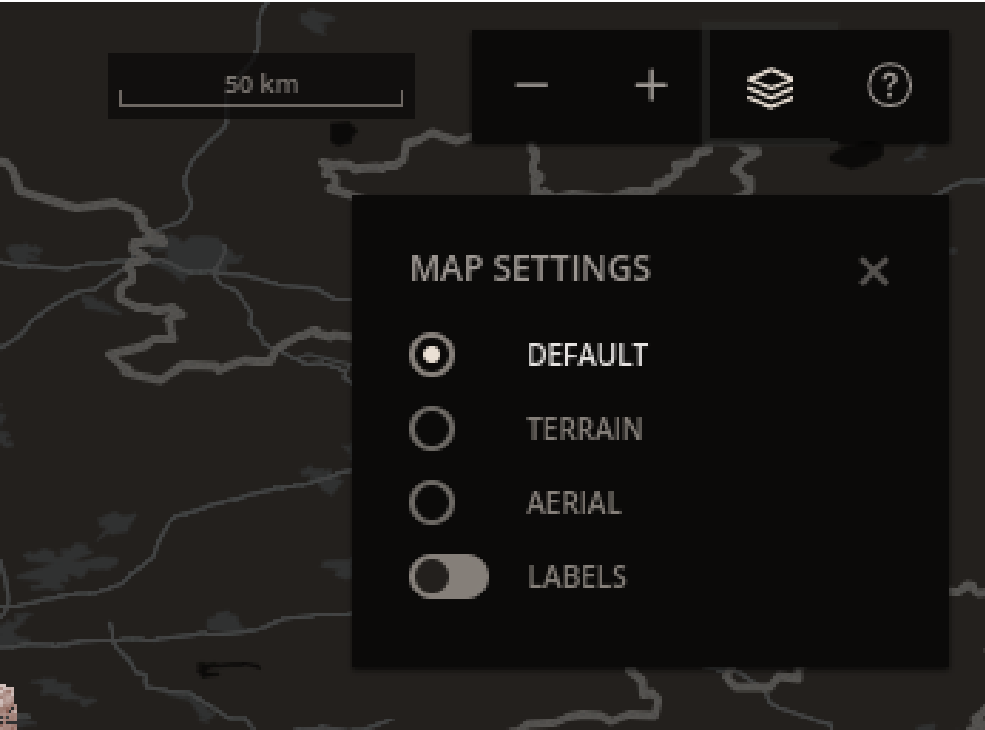
- Consortium
- License (CC BY4.0)
- Some Disclaimer



The screenshot shows a dark-themed sidebar on the right side of a web application. At the top, it says "WORLD SOILS INFORMATION" with a close button. Below that, it indicates "Version 1.0" and "Powered by" followed by a grid of logos for the consortium members: gmV, ISRIC, DLR, GFZ, UCLouvain, Czech University of Life Sciences Prague, Aristotle University of Thessaloniki, and Tel Aviv University. The "WorldSoils" section contains a paragraph about the project's goals. The "License" section states it is available under CC-BY 4.0. The "Disclaimer" section begins with "The information presented through this platform is based on the best, and sometimes". At the bottom of the sidebar, there are icons for "SCALE LEVEL", "DOWNLOAD", and "INFO".

DEMO Graphical User Interface

Top-right panel content



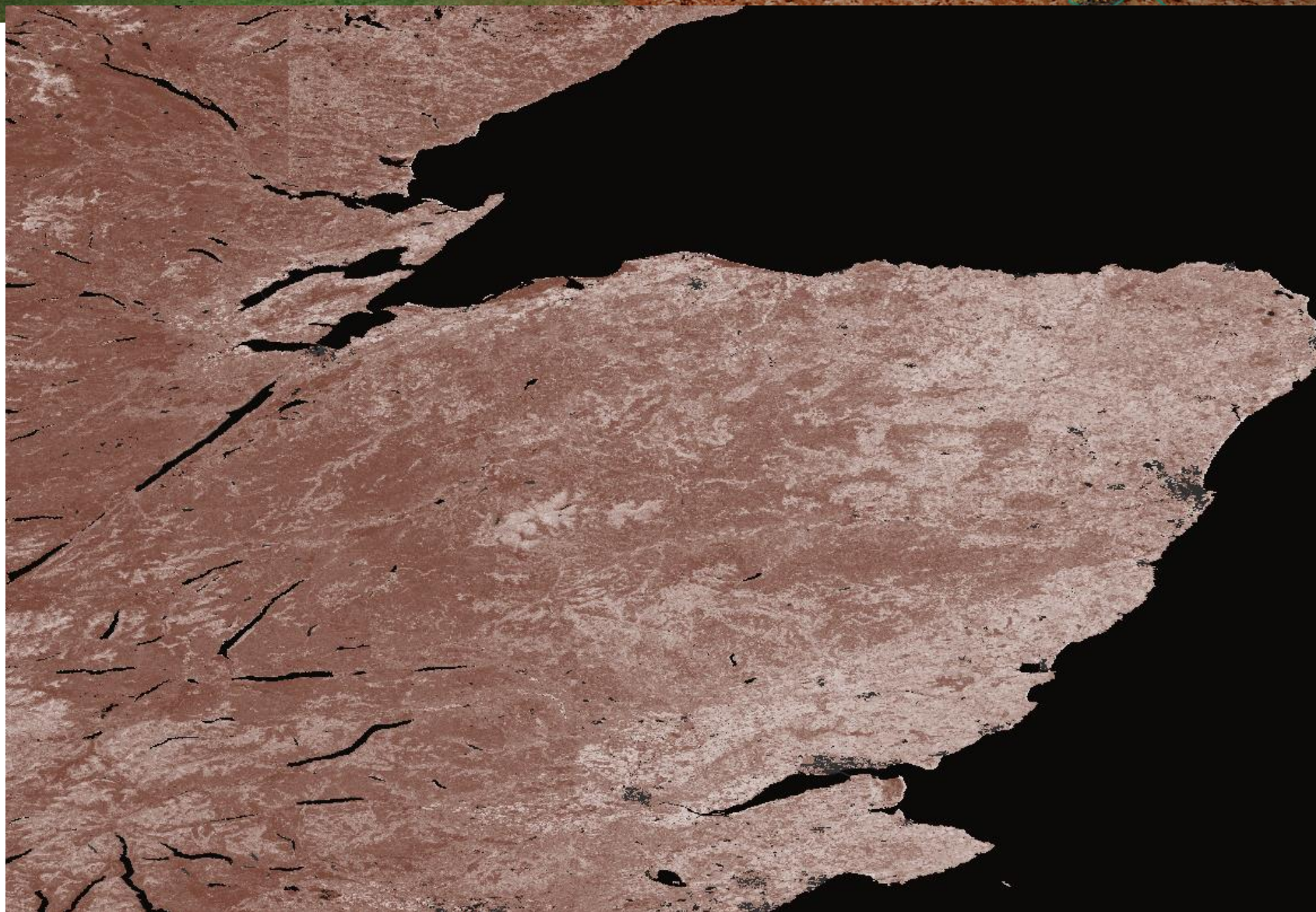
DEMO Graphical User Interface

Backgrounds



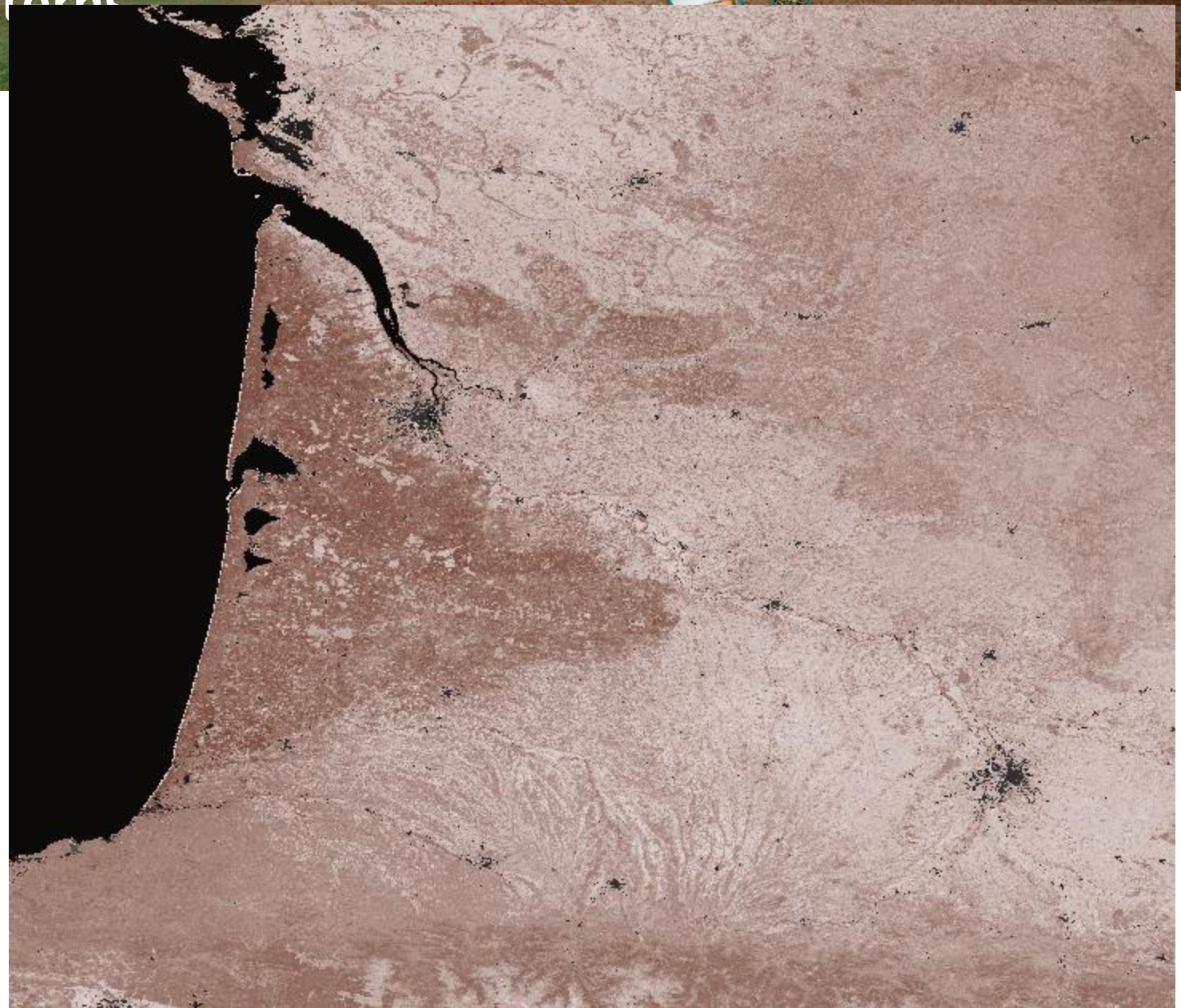
European product – spatial patterns

Scotland



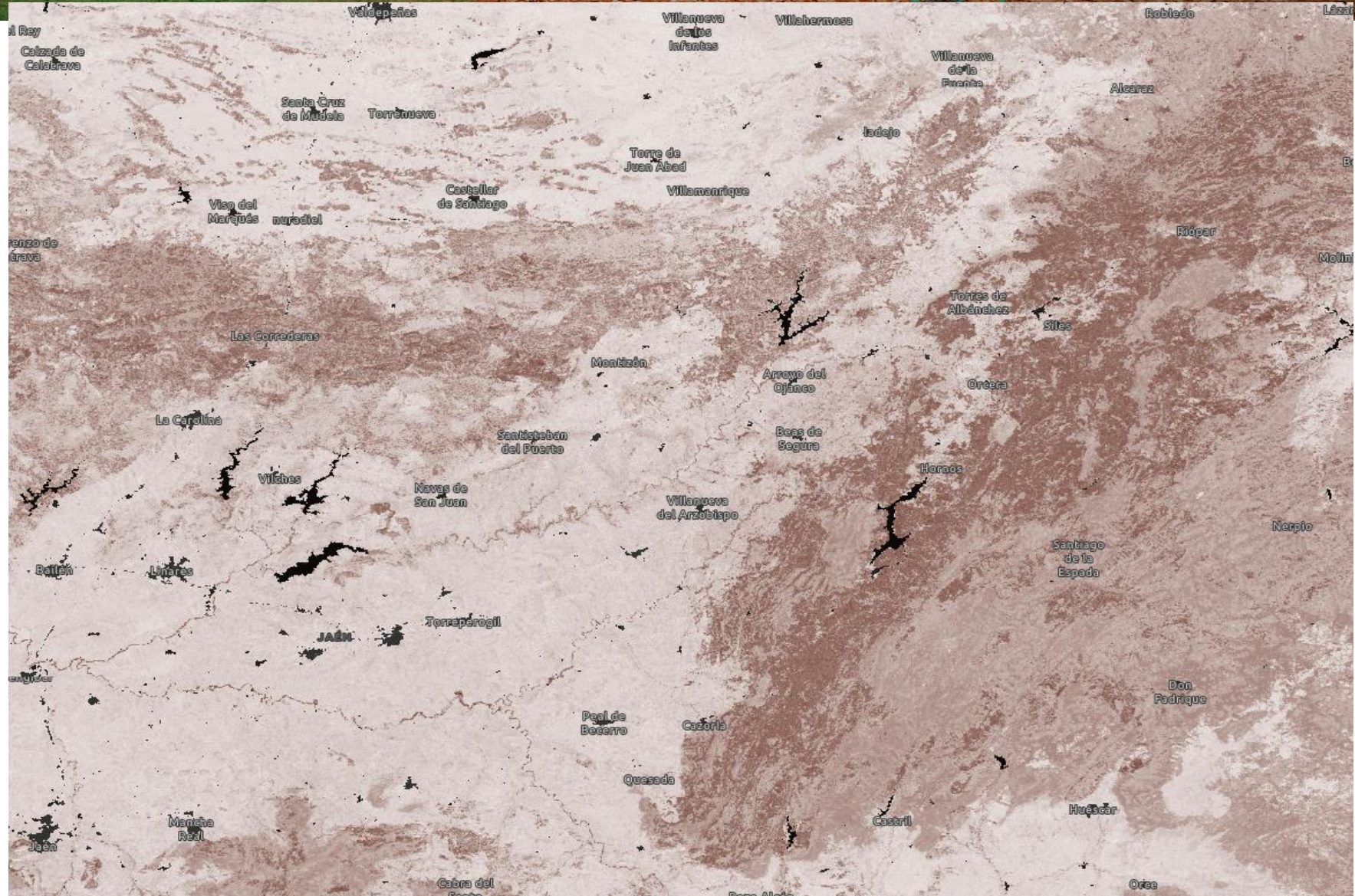
European product – spatial patterns

Bordeaux



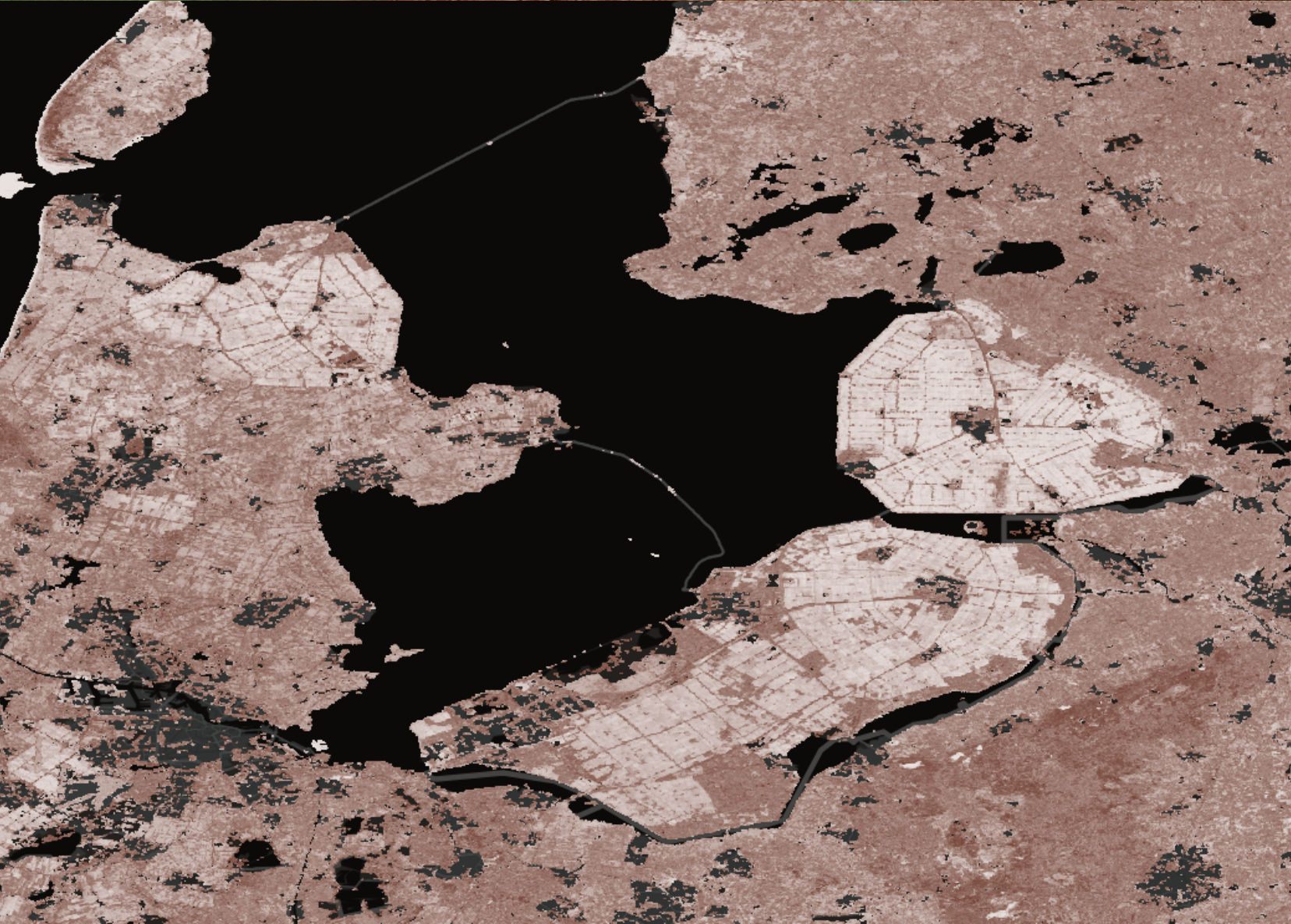
European product – spatial patterns

Southern Spain



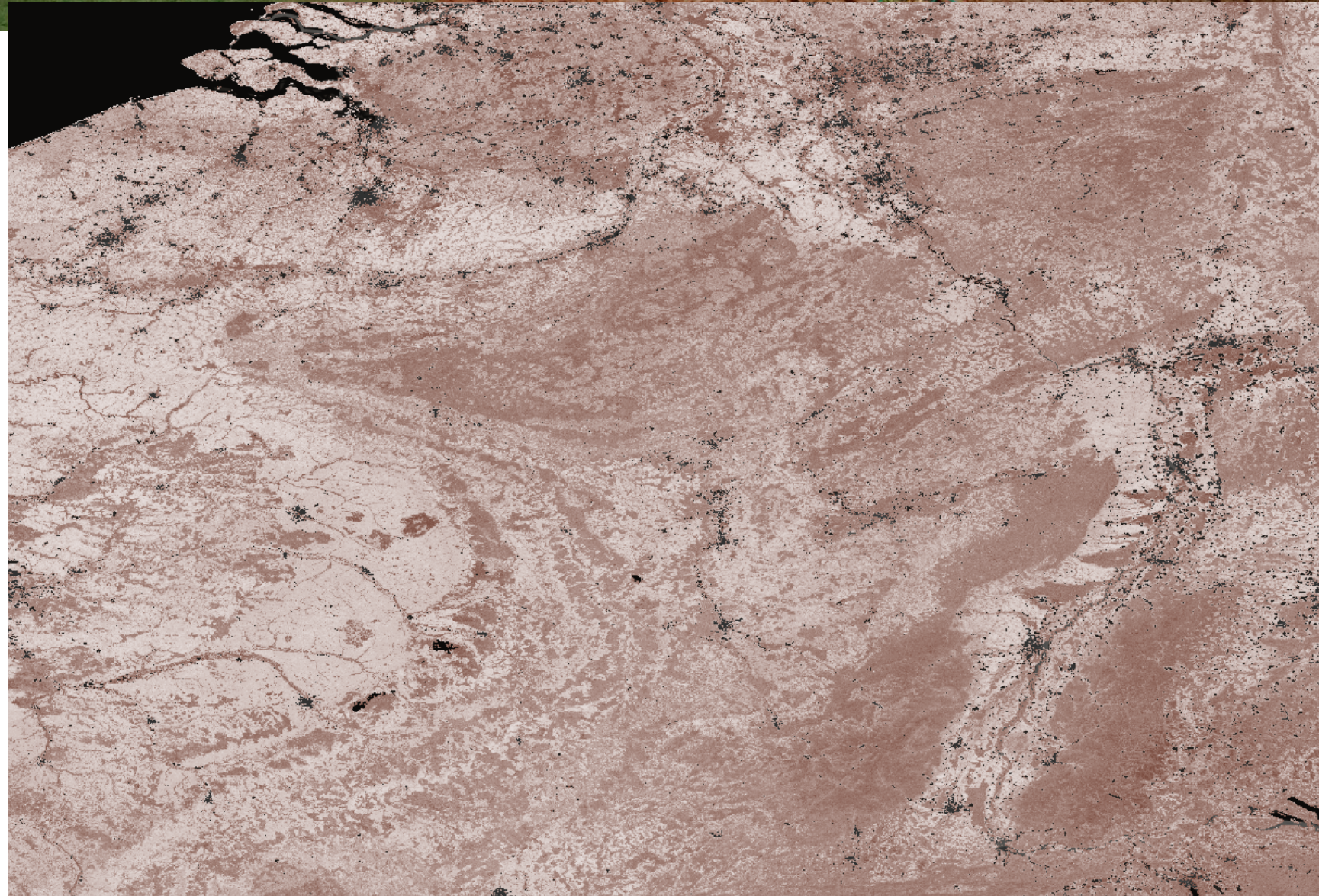
European product – spatial patterns

NL



European product – spatial patterns

France/Germany



DEMO Graphical User Interface: <https://gui.world-soils.com/>





Thank you!

Laura.poggio@isric.org



ESA Symposium on Earth Observation for Soil Protection and Restoration



Contract 400131273/20/I-NB