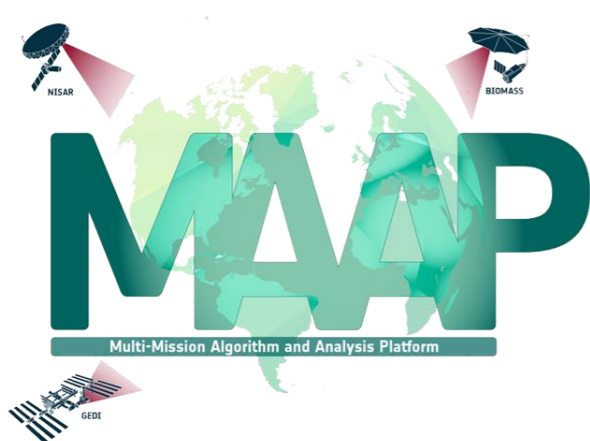


ESA MAAP

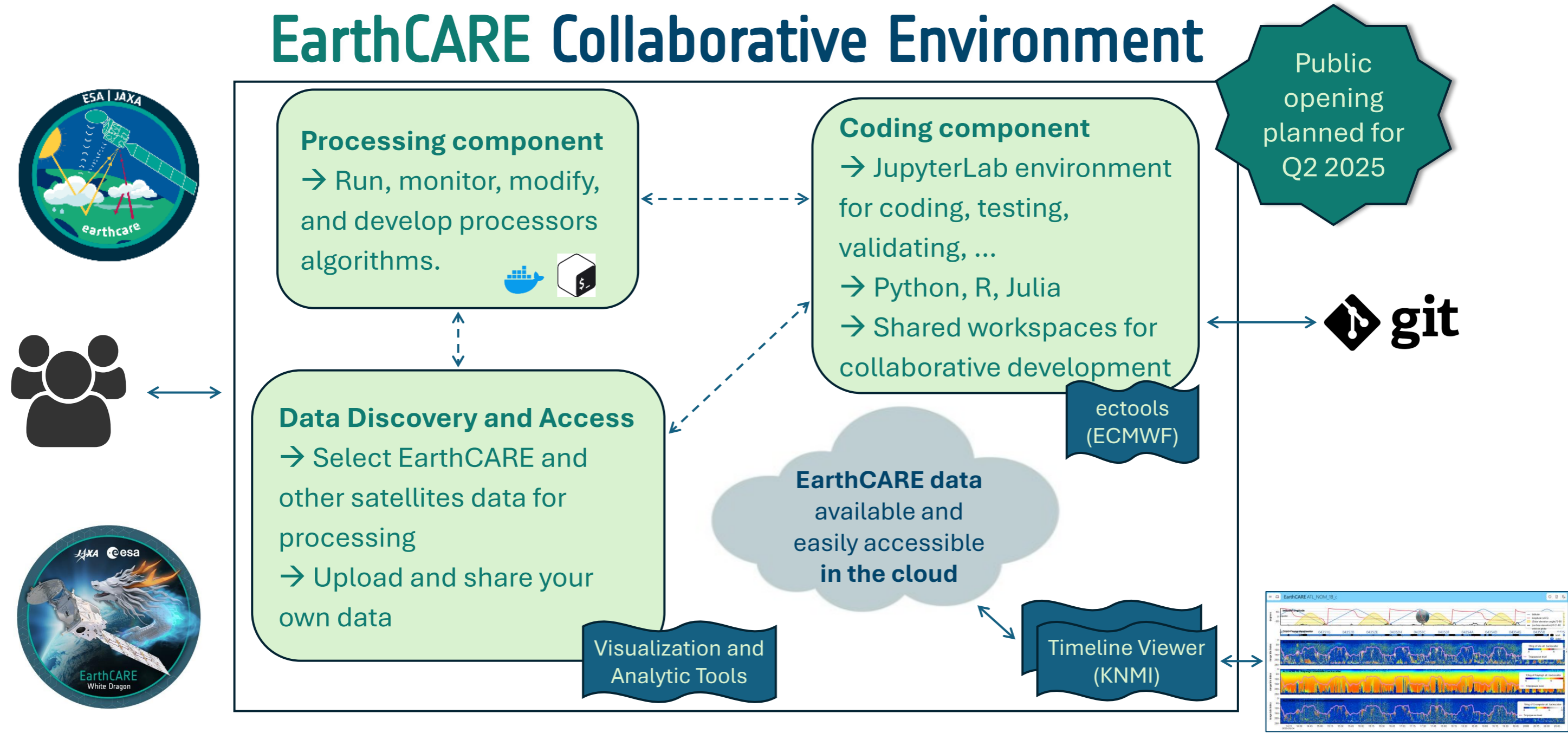


ESA MAAP Multi-Mission Algorithm and Analysis Platform

User-tailored, secure, scalable platform providing **Collaborative Environments** for specific EO Scientific Communities’ needs (Biomass, EarthCARE, FLEX and more to come)

- Powering the EO Scientific Community with advanced Data Access functionalities, Services and Resources
- Boosting EO Science Missions Operational Improvements
- Enabling Open Science in a Collaborative Environment for Algorithms / Processors Development and EO Products Analysis

EarthCARE Collaborative Environment



EarthCARE Collaborative Environment – Use-Cases / Applications

- Discover, access and utilize **satellite data** from ESA’s catalogue.
- Discover **ectools** (by ECMWF), Python plotting tools for EarthCARE L2 and L1 product verification.
- Interactively browse EarthCARE data the **timeline viewer** (by KNMI).
- Create, modify, and run **L2 processors** on demand, with any EarthCARE data in the cloud.
- Upload and share your campaign data to perform **Cal/Val** activities in **JupyterLab**, seamlessly integrating with GIT.
- Cross calibration and inter-comparison of **NASA PACE** and **EarthCARE** products.
- Connect with the EarthCARE community and share your **algorithms and data**.