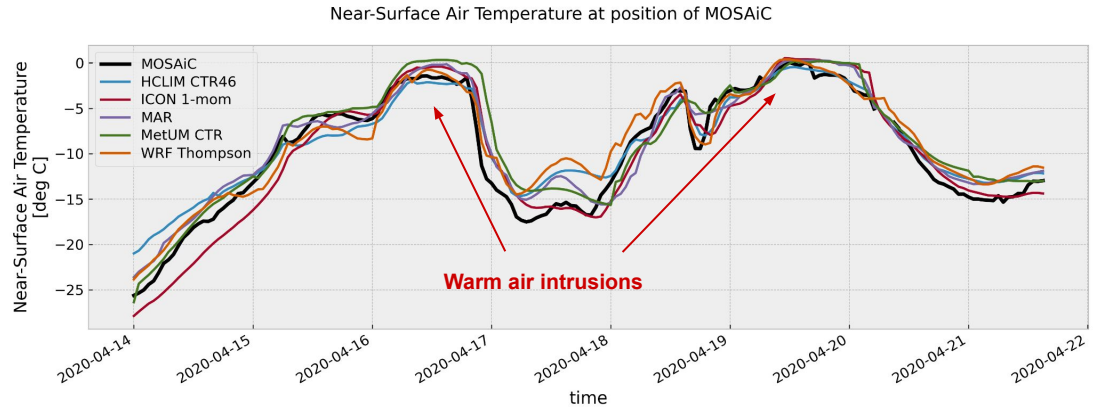


MOSAiC Model Intercomparison Project

Cloud and aerosol analysis during
two warm air intrusions



Filip Severin von der Lippe
MetNO / University of Oslo
filipl@met.no / fslippe@uio.no

September 5, 2024



PolarRES
Exploring future polar climates

Small domain 2.5 km resolution

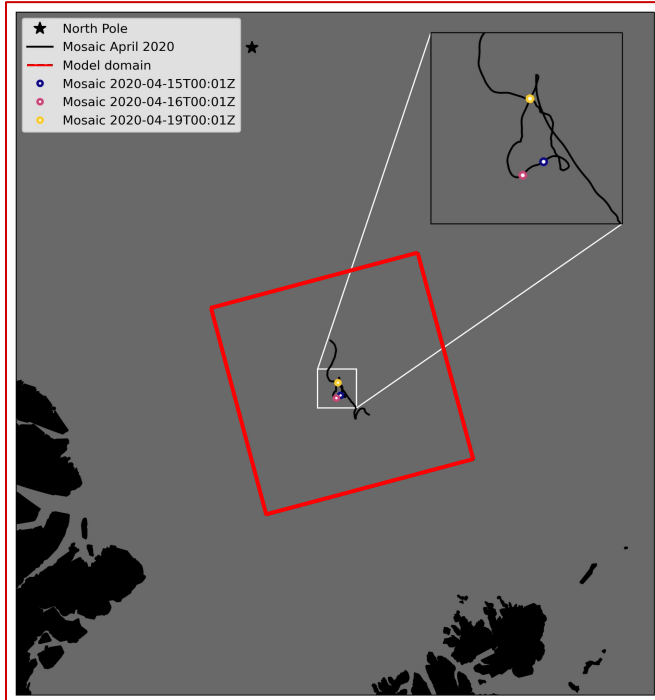


Photo by Stephanie Arndt/Alfred Wegener Institute

Models (sensitivity experiments):

HCLIM:

- ICE-3 and ICE-T microphysics
- Cycle 43 and cycle 46
- High and low CCN
- UKCA NRT aerosols

ICON:

- 1-momentum and 2-momentum (low and high CCN) microphysics

MAR

- Standard model setup

WRF:

- Thompson and Morrison microphysics

MetUM:

- Low and high CCN
- UKCA NRT aerosols

SNAP

- Standard model setup on pan-Arctic domain

Models (sensitivity experiments):

HCLIM:

- **ICE-3 and ICE-T microphysics**
- Cycle 43 and cycle 46
- High and low CCN
- UKCA NRT aerosols

ICON:

- **1-momentum and 2-momentum (low and high CCN) microphysics**

MAR

- Standard model setup

WRF:

- **Thompson and Morrison microphysics**

METUM:

- Low and high CCN
- UKCA NRT aerosols

SNAP

- Standard model setup on pan-Arctic domain

Models (sensitivity experiments):

HCLIM:

- ICE-3 and ICE-T microphysics
- **Cycle 43 and cycle 46**
- High and low CCN
- UKCA NRT aerosols

ICON:

- 1-momentum and 2-momentum (low and high CCN) microphysics

MAR

- Standard model setup

WRF:

- Thompson and Morrison microphysics

METUM:

- Low and high CCN
- UKCA NRT aerosols

SNAP

- Standard model setup on pan-Arctic domain

Models (sensitivity experiments):

HCLIM:

- ICE-3 and ICE-T microphysics
- Cycle 43 and cycle 46
- High and low CCN
- **UKCA NRT aerosols**

ICON:

- 1-momentum and 2-momentum (low and high CCN) microphysics

MAR

- Standard model setup

WRF:

- Thompson and Morrison microphysics

METUM:

- Low and high CCN
- **UKCA NRT aerosols**

SNAP

- Standard model setup on pan-Arctic domain

Models (sensitivity experiments):

HCLIM:

- ICE-3 and ICE-T microphysics
- Cycle 43 and cycle 46
- **Low and high CCN**
- UKCA NRT aerosols

ICON:

- **1-momentum and 2-momentum (low and high CCN) microphysics**

MAR

- Standard model setup

WRF:

- Thompson and Morrison microphysics

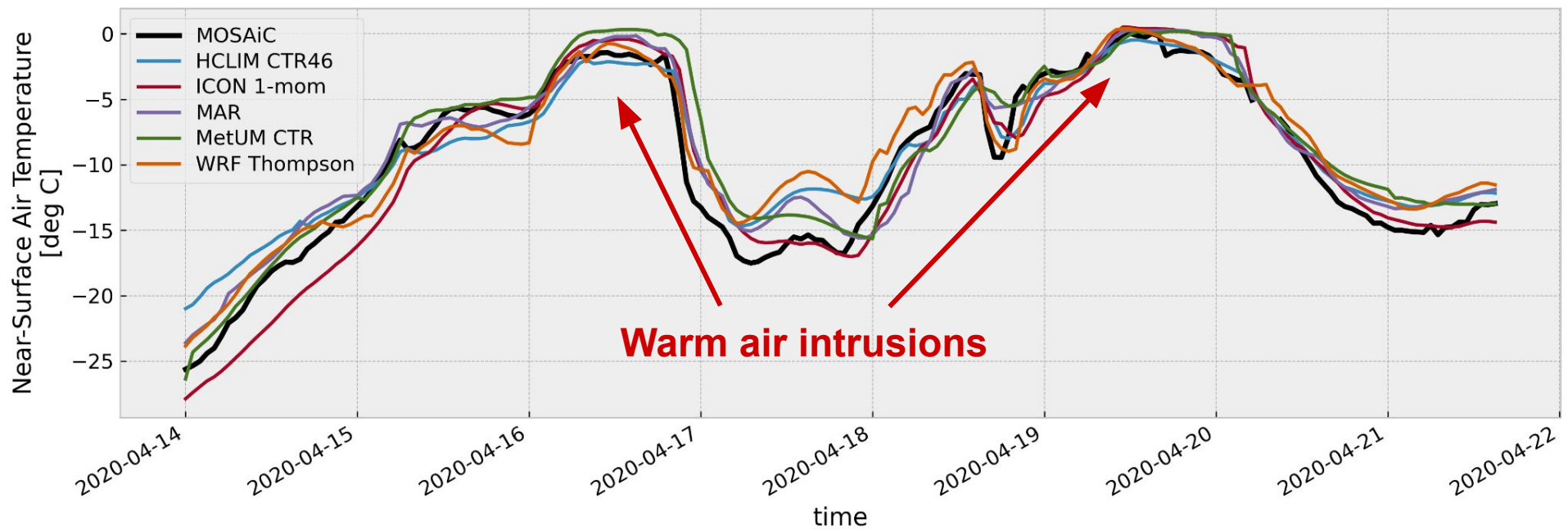
METUM:

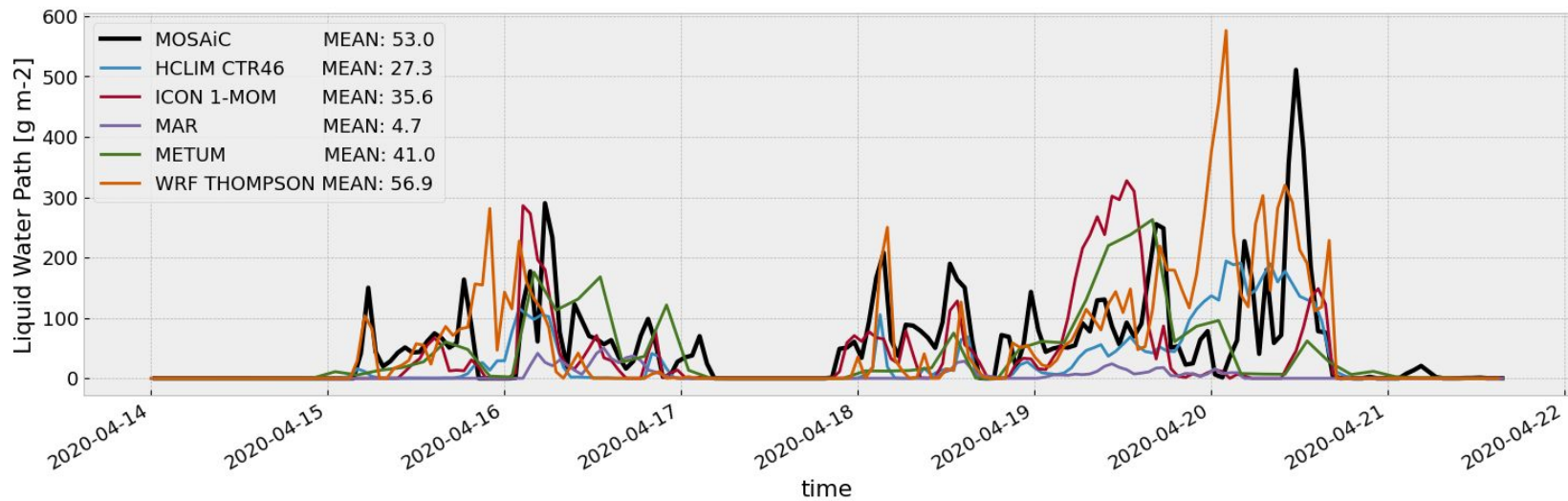
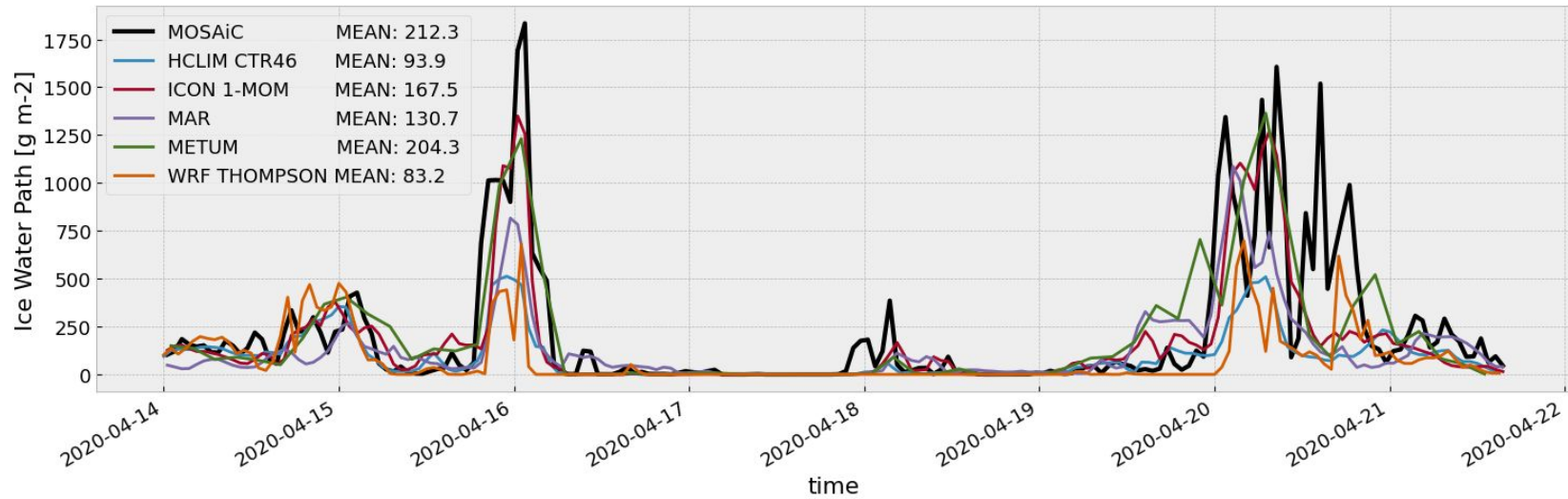
- **Low and high CCN**
- UKCA NRT aerosols

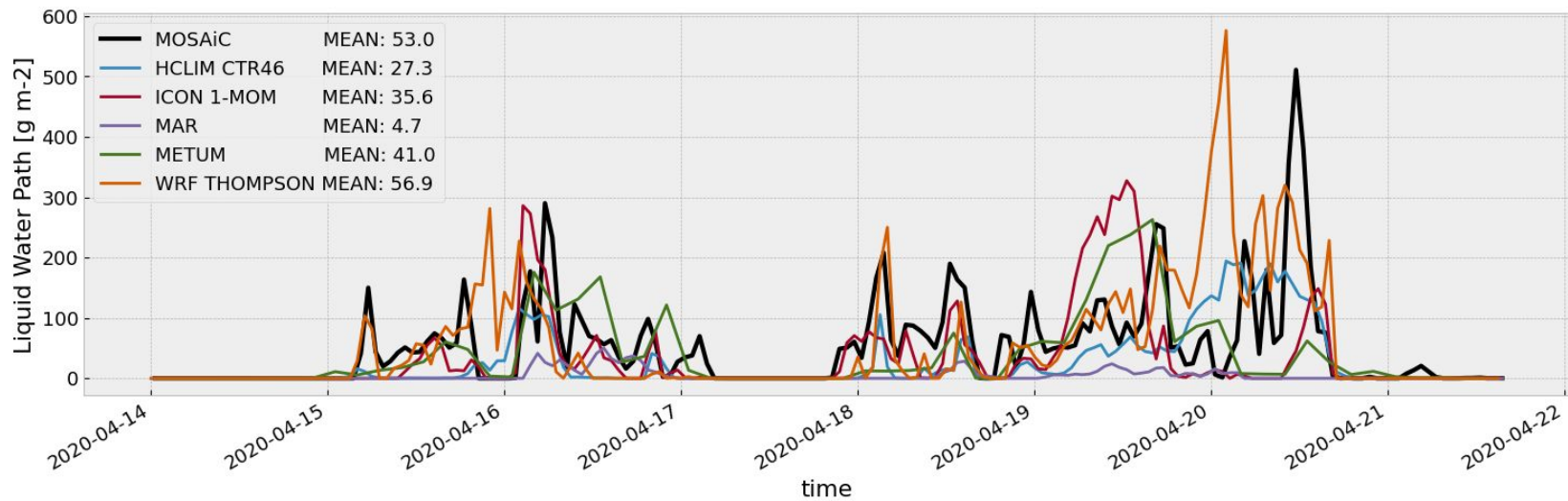
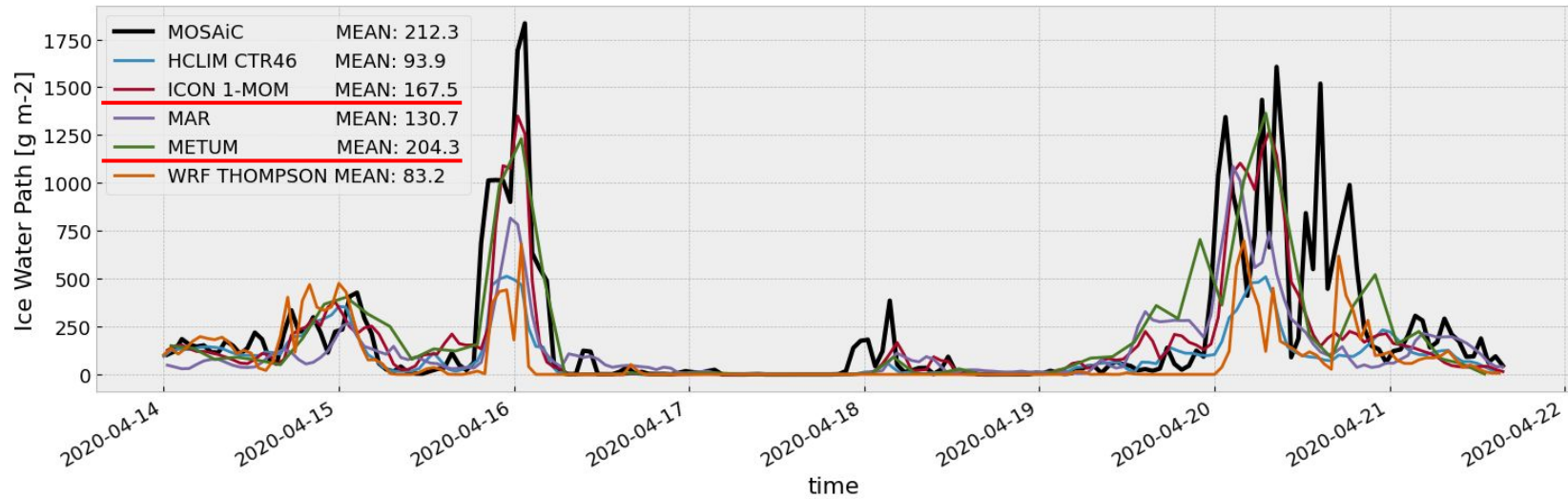
SNAP

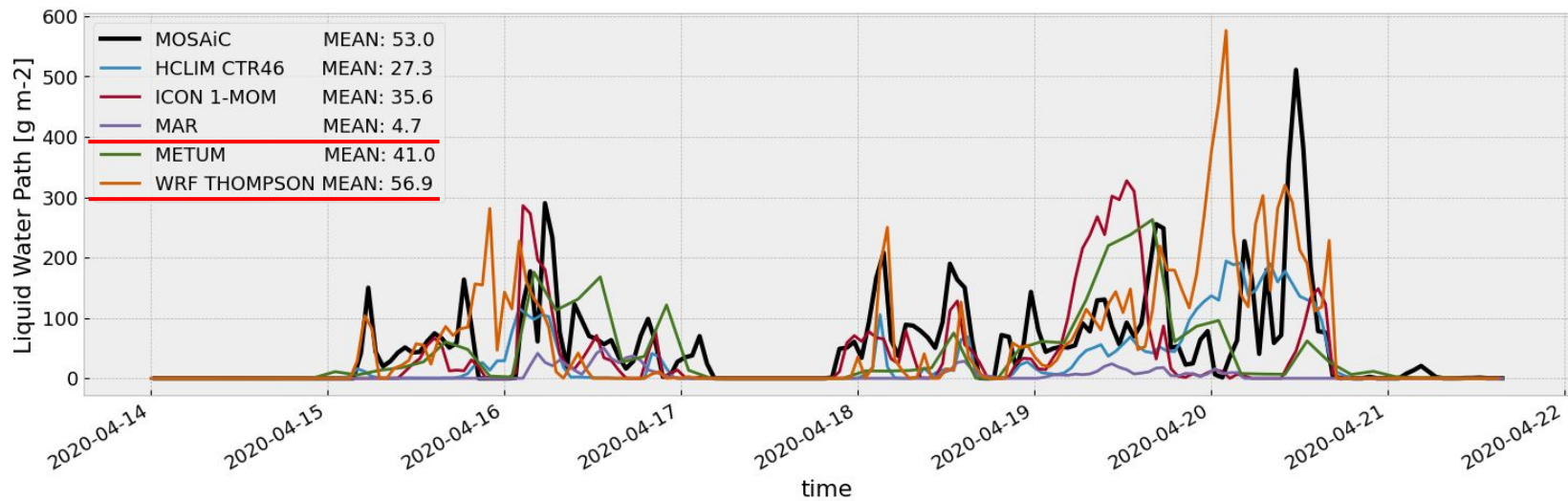
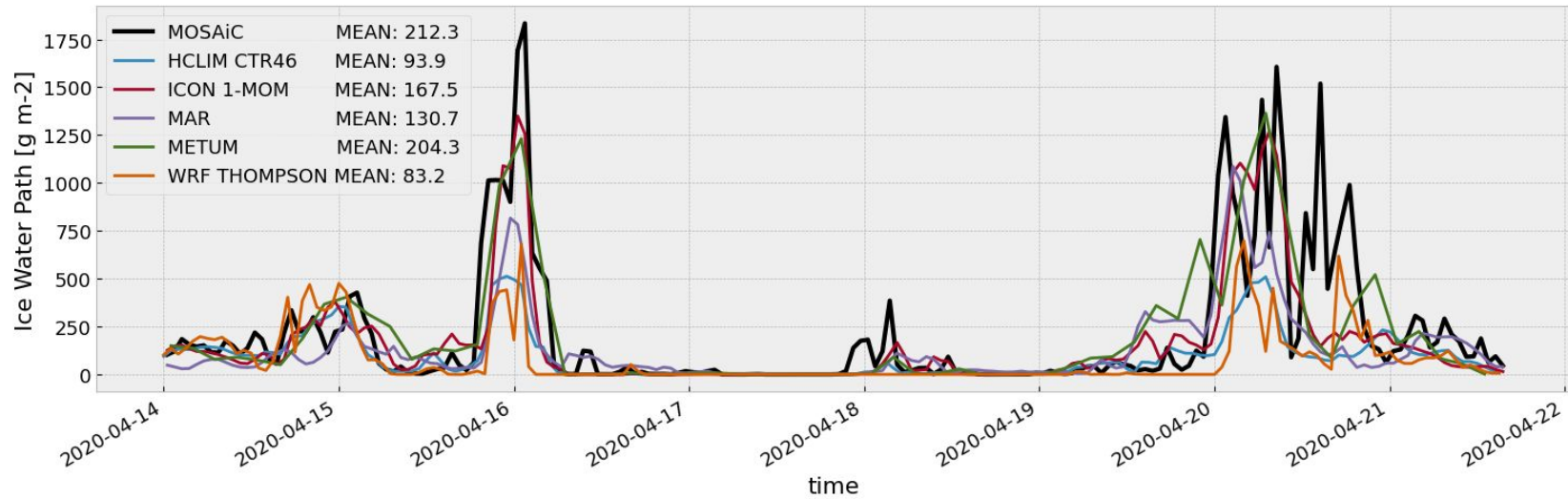
- Standard model setup on pan-Arctic domain

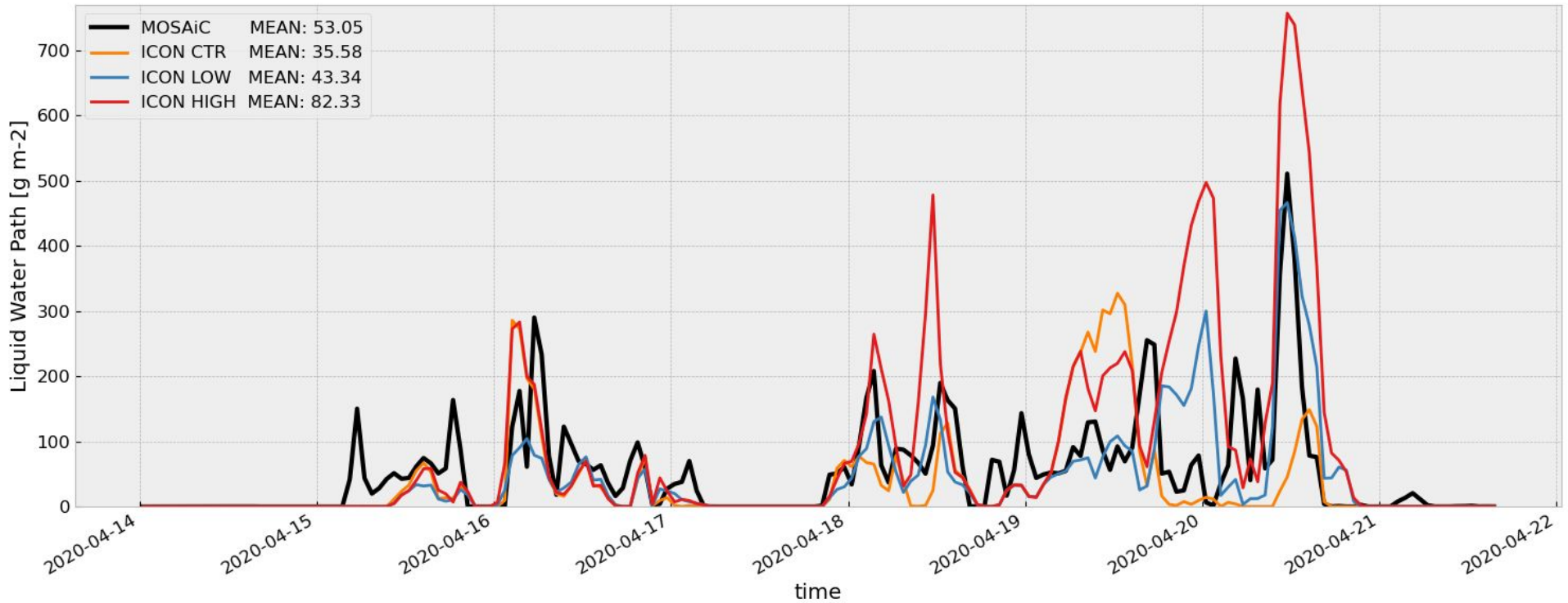
Near-Surface Air Temperature at position of MOSAIC





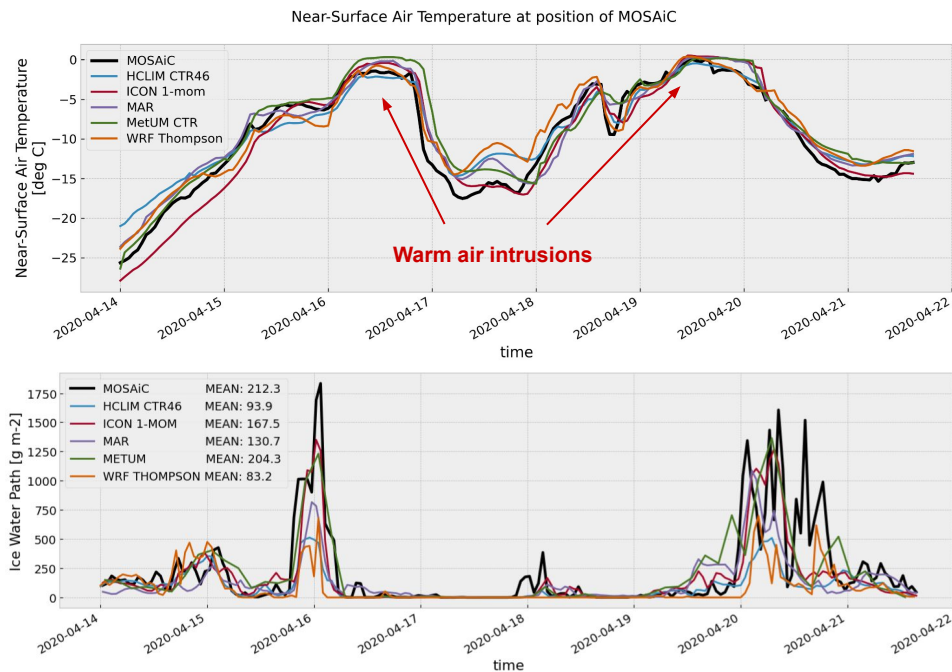






Summary

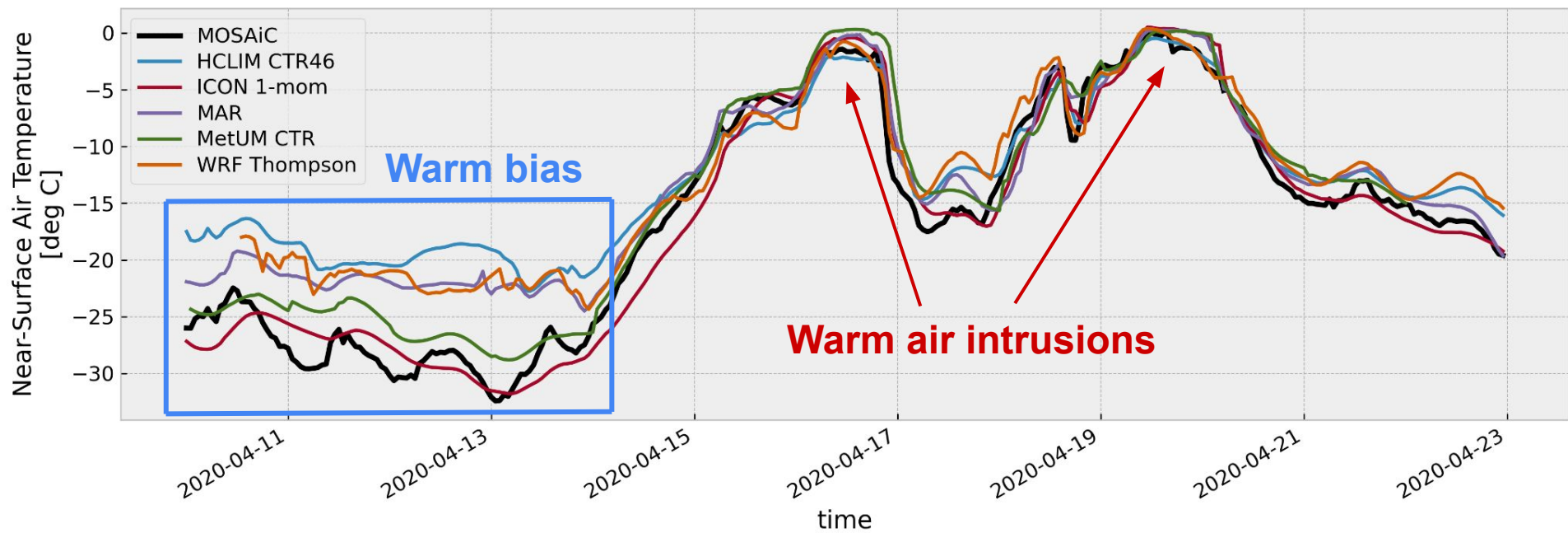
- Temperature
- Ice and Liquid water paths
- Impact of CCN concentrations



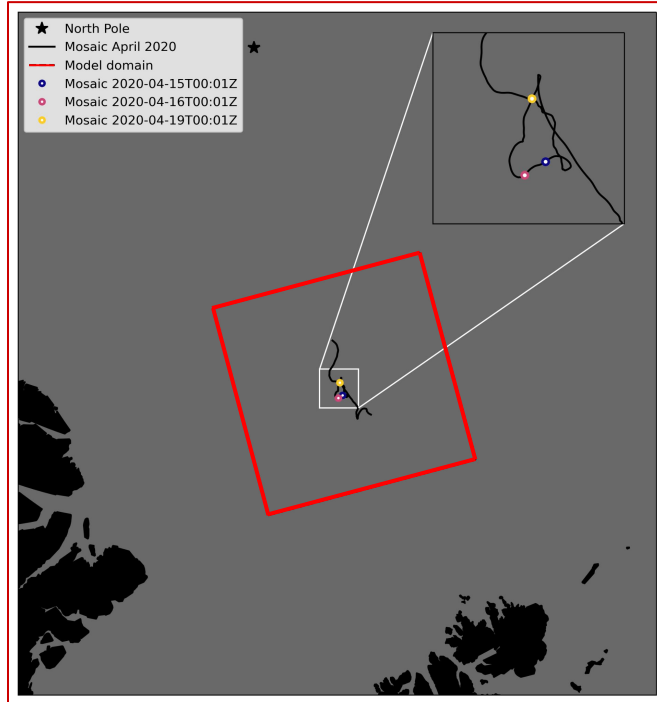
PolarRES

Exploring future polar climates

Near-Surface Air Temperature at position of MOSAiC



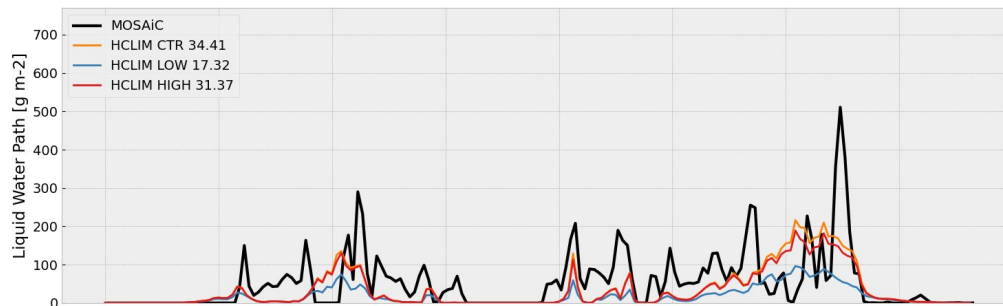
Small domain 2.5 km resolution



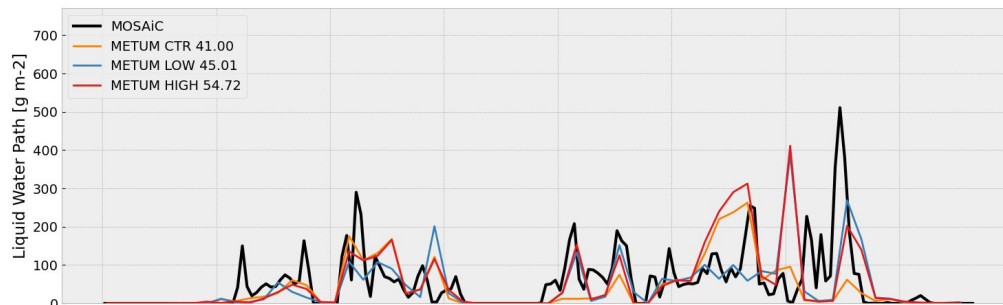
Pan-Arctic 11 km resolution



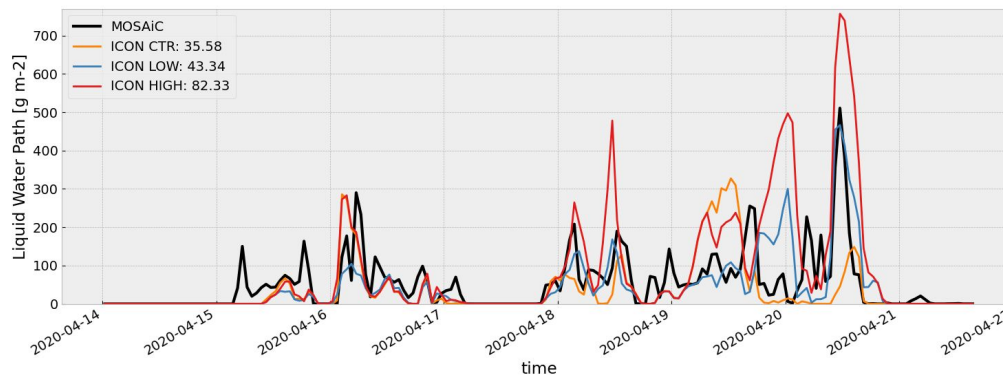
HCLIM

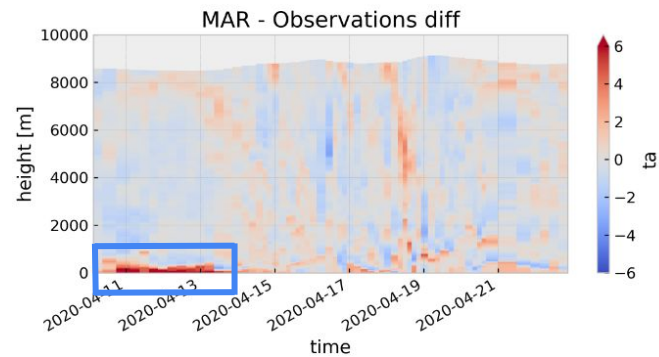
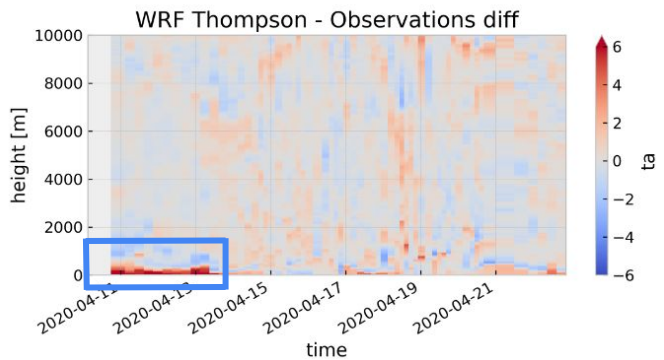
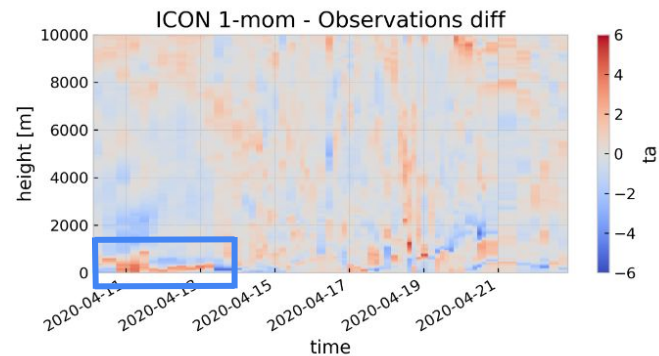
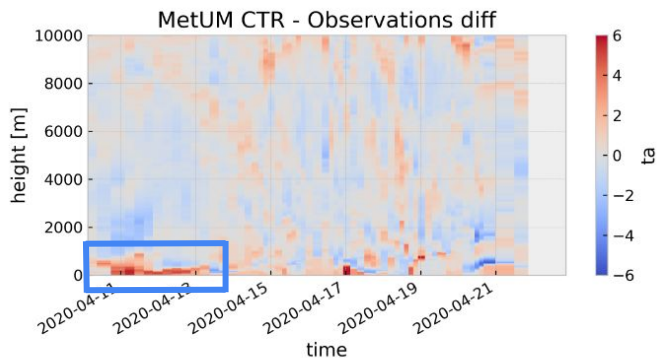
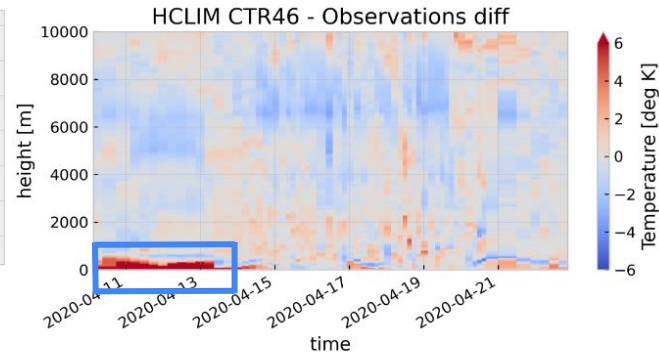
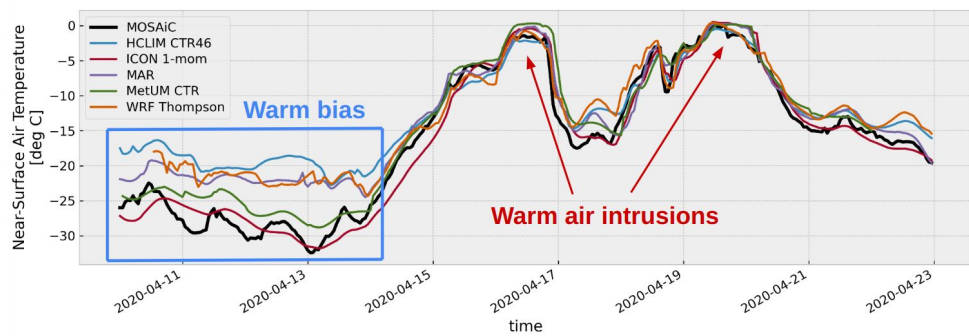


MetUM



ICON





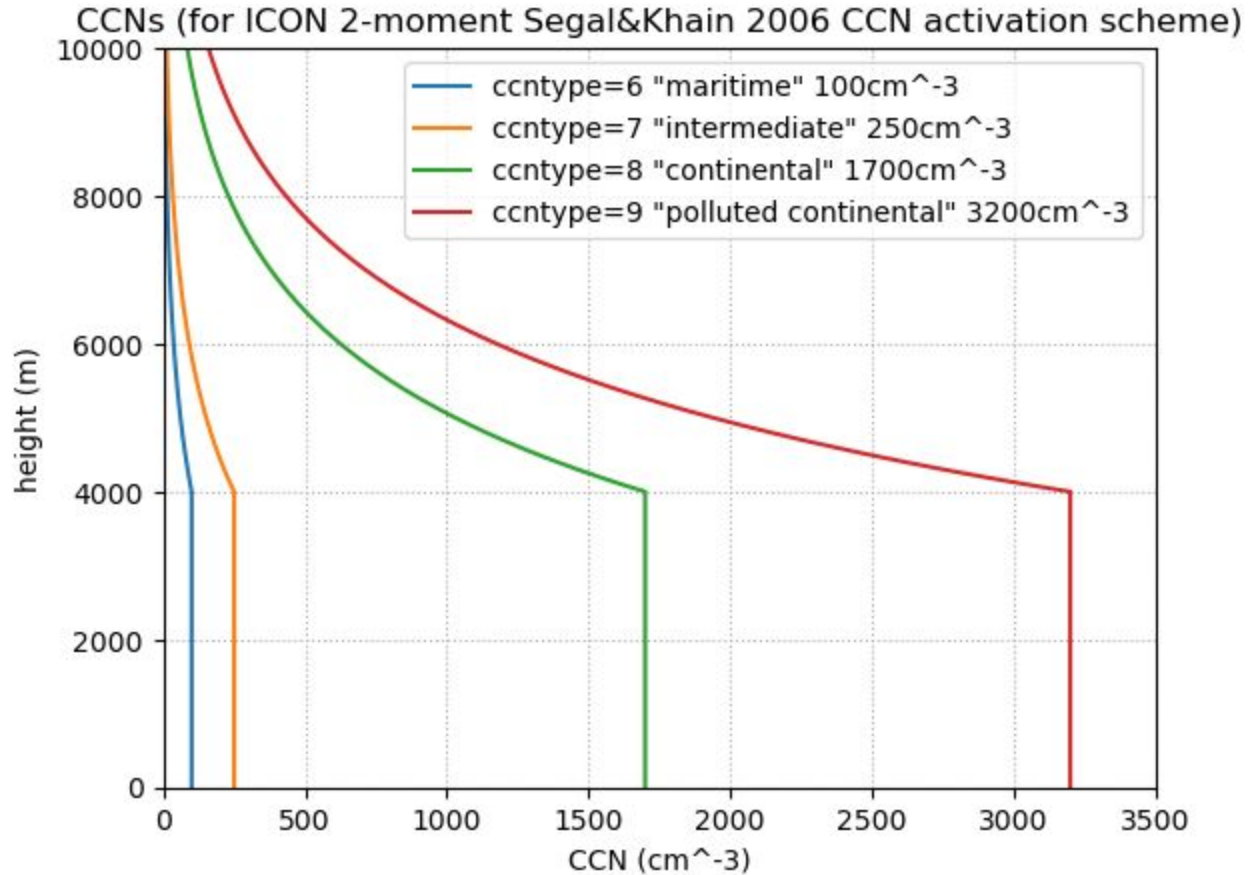


Figure: Jan Landwehrs (AWI)