



PROGRAMME OF THE EUROPEAN UNION



co-funded with



Presentation of Copernicus Sentinel 2 Global Mosaic Service (S2GM) - Phase 2



Jean-Sébastien Carrière ¹

Christophe Lerebourg ¹



(1) ACRI-ST, Sophia Antipolis and Toulouse, France



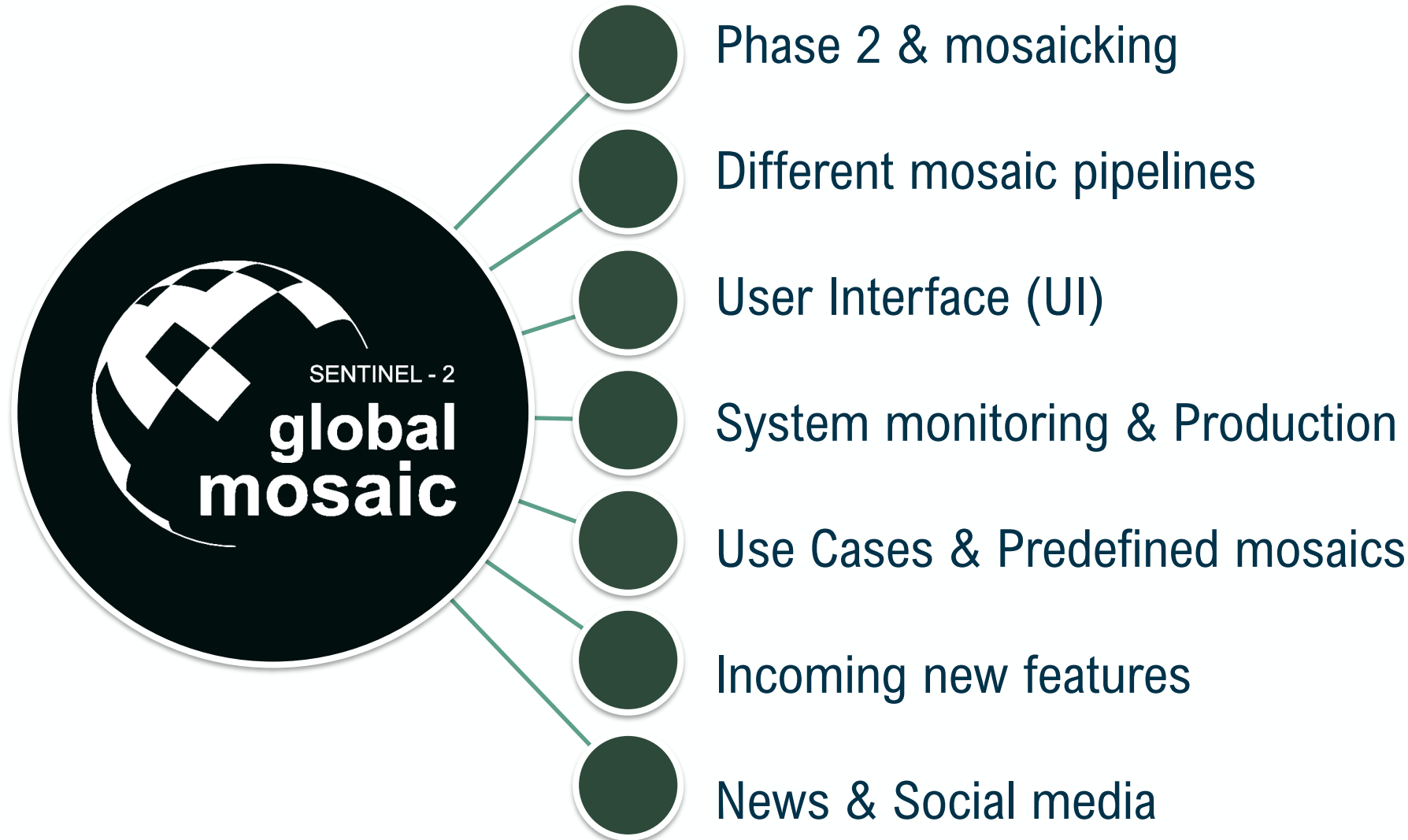
S2GM – Table of Contents

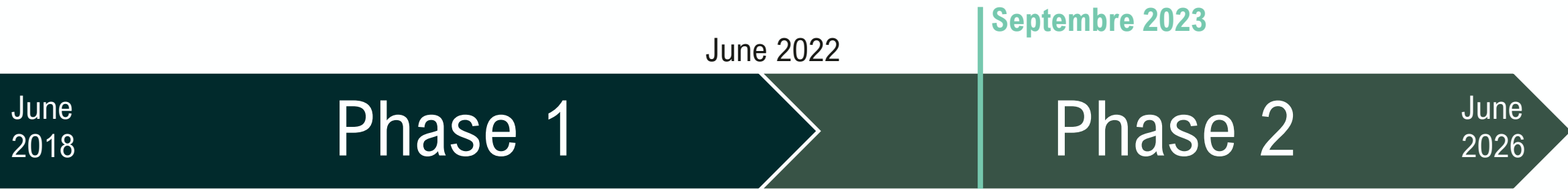


PROGRAMME OF THE
EUROPEAN UNION



co-funded with





The Sentinel-2 Global Mosaic service is funded by European Commission as part of Copernicus Global Land Service

- Provides regional and temporal composites of surface reflectance derived from the Sentinel-2 MSI sensors.
- Free of cloud surface reflectance products.
- On-demand production over specific areas of interest.

Mosaics include the best representative spectra for each pixel, ensuring consistent spectra & maintaining radiometric quality.

Partners:	ACRI-ST	https://www.acri-st.fr/en/
	AdwaisEO	https://www.adwaiseo.eu/en/home/
	LuxCarta	https://www.luxcarta.com/



S2GM - Mosaicking



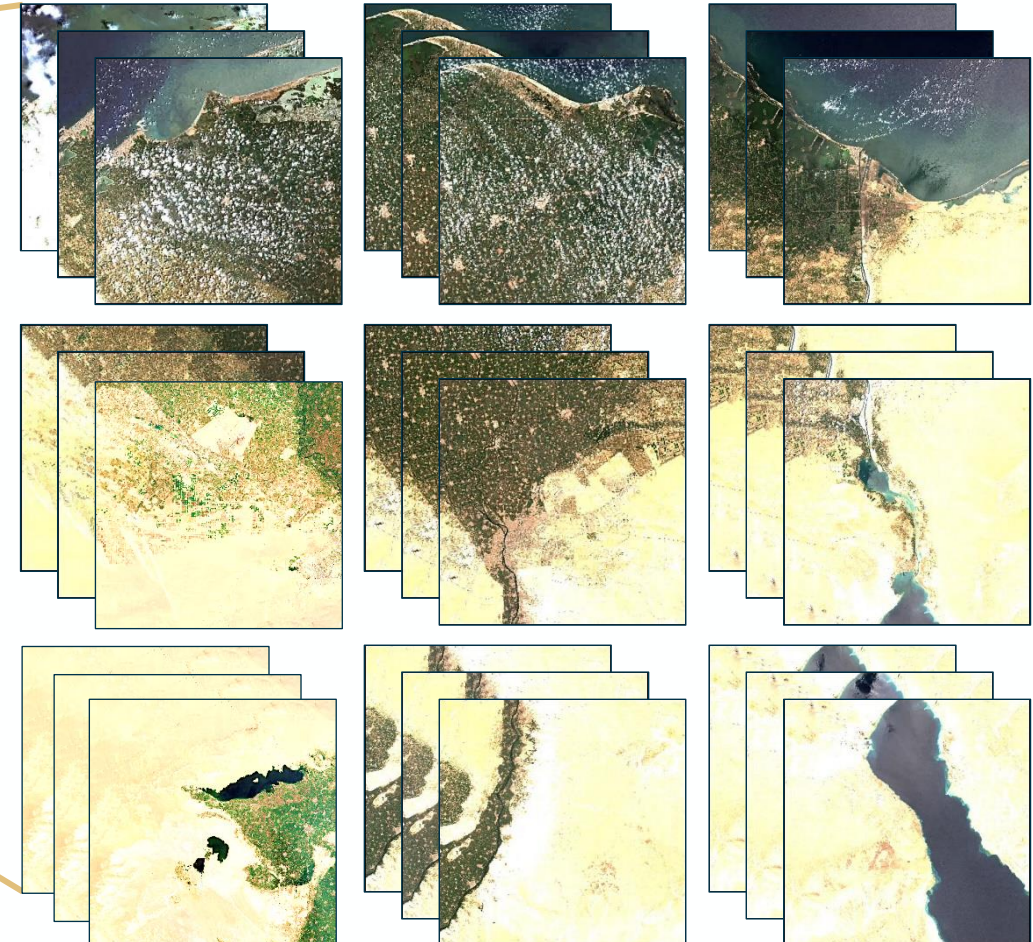
PROGRAMME OF THE EUROPEAN UNION



co-funded with



3 x 3 (lon & lat)
x 3 (request period) = 27 S2 tiles



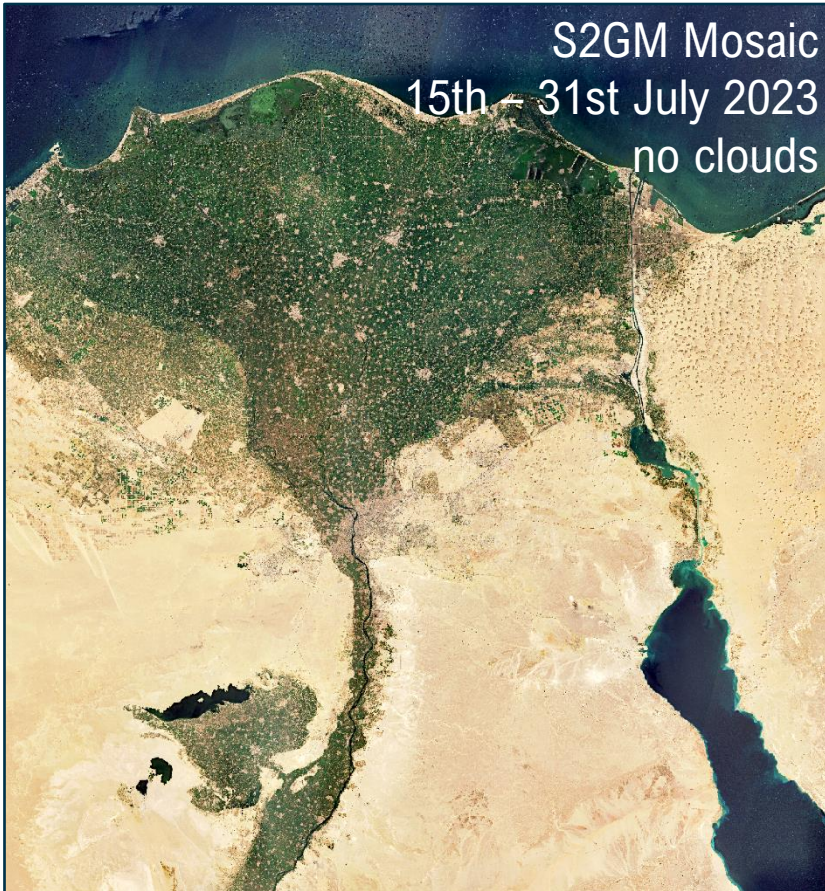
S2GM - Mosaicking



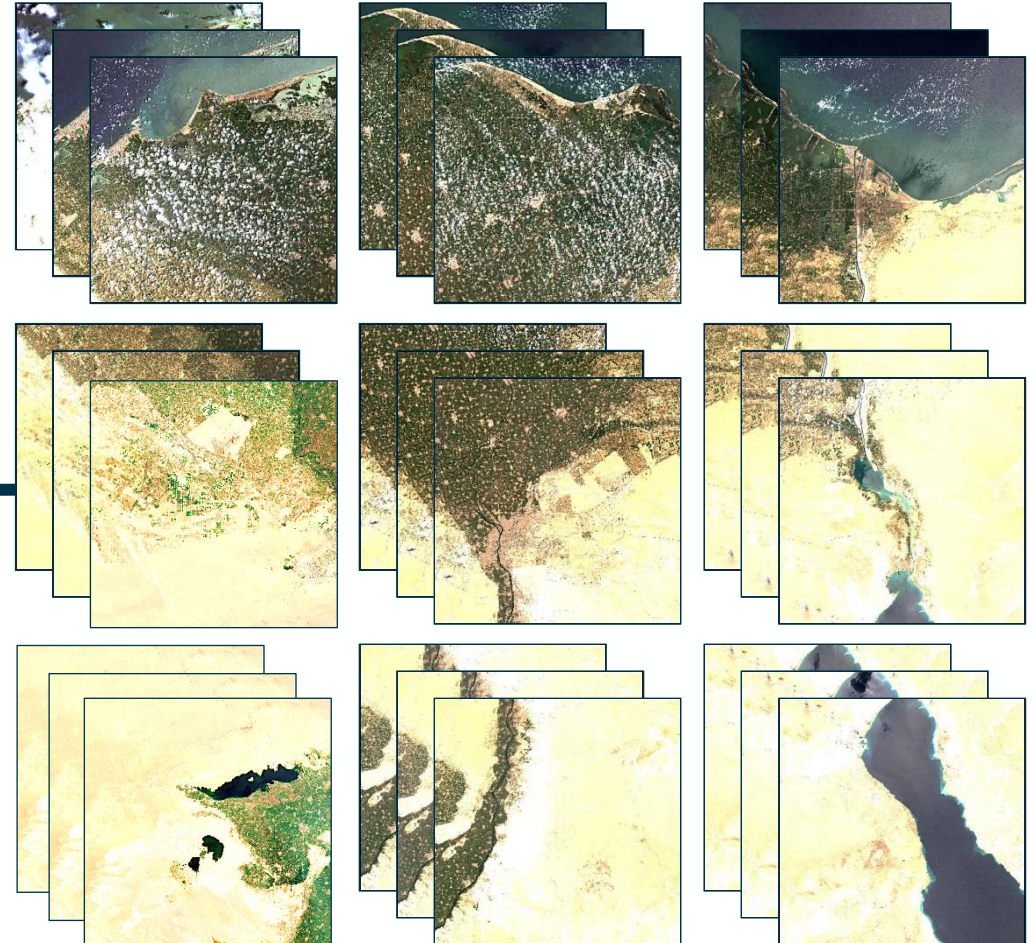
PROGRAMME OF THE
EUROPEAN UNION



co-funded with



3 x 3 (lon & lat)
x 3 (request period) = 27 S2 tiles



S2GM
Mosaic pipeline

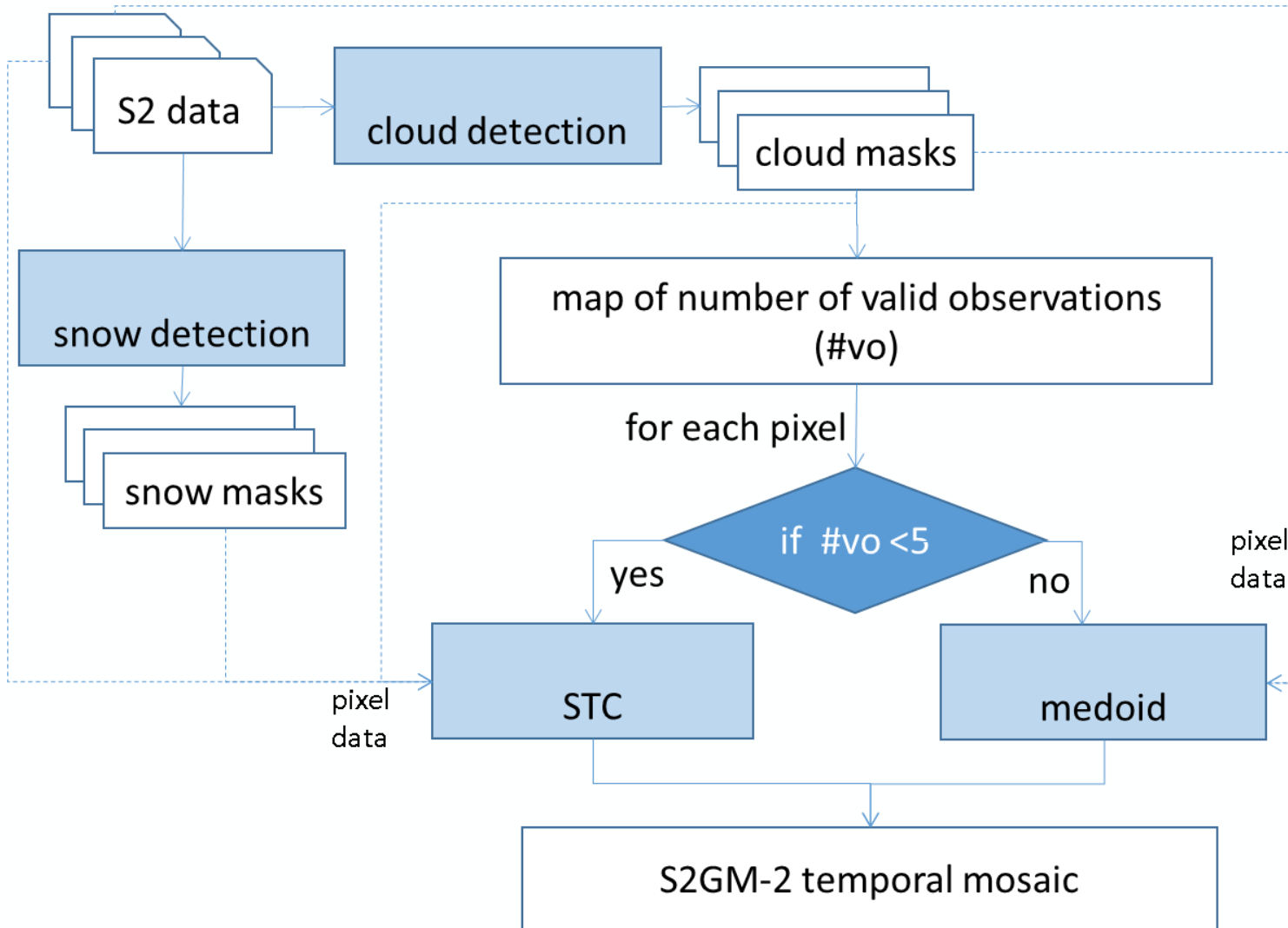
S2GM – Temporal mosaic pipeline



PROGRAMME OF THE EUROPEAN UNION



co-funded with



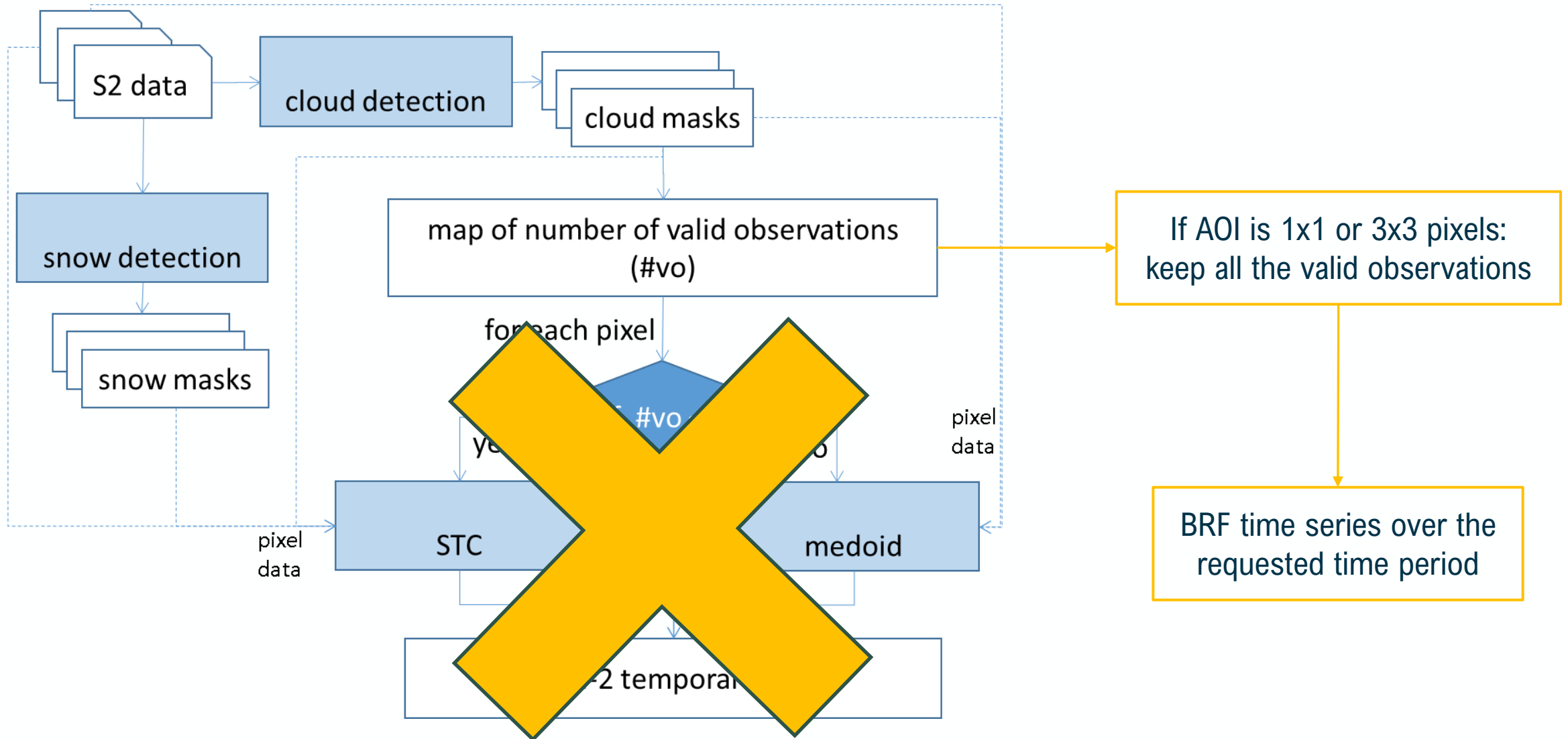
S2GM – Point Time Series (PTS) pipeline



PROGRAMME OF THE EUROPEAN UNION



co-funded with



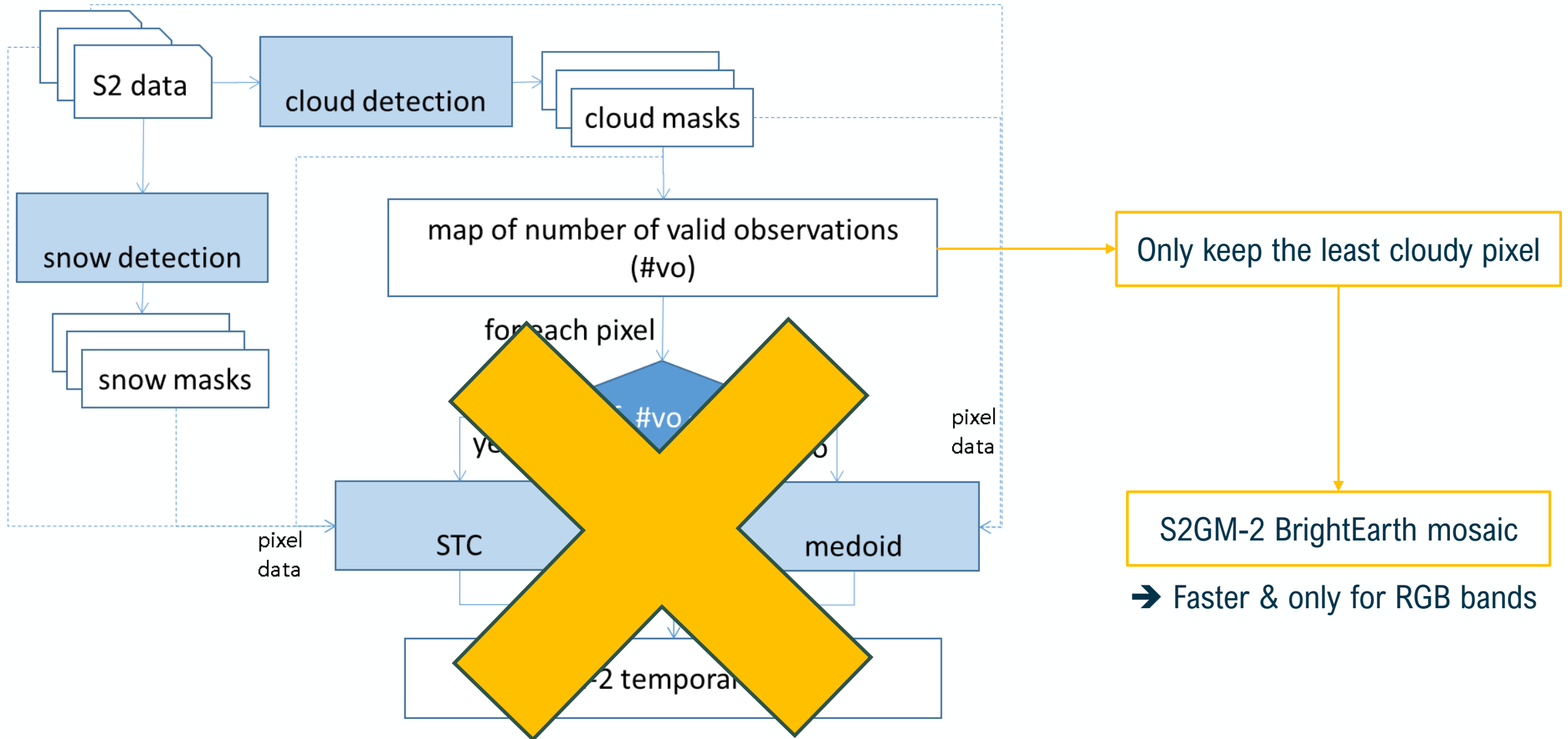
S2GM – BrightEarth mosaic pipeline



PROGRAMME OF THE EUROPEAN UNION



co-funded with



S2GM – User Interface (UI)



PROGRAMME OF THE EUROPEAN UNION



co-funded with



Temporal Mosaic

Time Series

BrightEarth

Predefined Mosaic

User Area



S2GM – User Interface (UI)



PROGRAMME OF THE EUROPEAN UNION



co-funded with



Everything is available through API

Time Series (PTS)

Resolution

- 10m
- 20m
- 30m

Pixel selection

- 1x1
- 3x3

BrightEarth Mosaic

Only B02, B03 and B04 S2 bands

Temporal Mosaic

All S2 bands

Bit Depth: 8 & 16-bit

Multiple quality bands: AOT

Cloud & Snow confidences

View & Sun angles

Scene classifications

Medoid Quality & Source index

Number of valid observations

Image Format

- *GeoTiff*
- *JPEG200*
- *COG*
- *NetCDF*

Resolution

- 10m
- 20m
- 30m

Coordinate System

- *WGS84*
- *UTM*

Cloud mask

- *ESA cloud mask*
- *BrightEarth cloud mask*

Production – Since June 2022



PROGRAMME OF THE EUROPEAN UNION



co-funded with



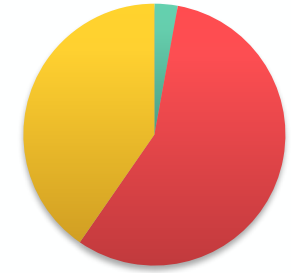
Temporal Mosaic



BrightEarth Mosaic since October 2022

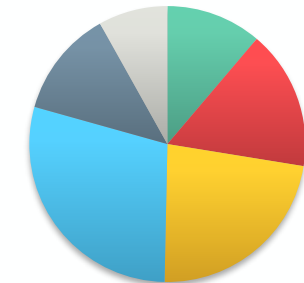


Product Type



- PTS
- Temporal Mosaic
- BrightEarth Mosaic

Temporal Period



- Day
- 10Day
- Month
- Quarter
- Year
- Custom



Production – Since June 2022



PROGRAMME OF THE EUROPEAN UNION

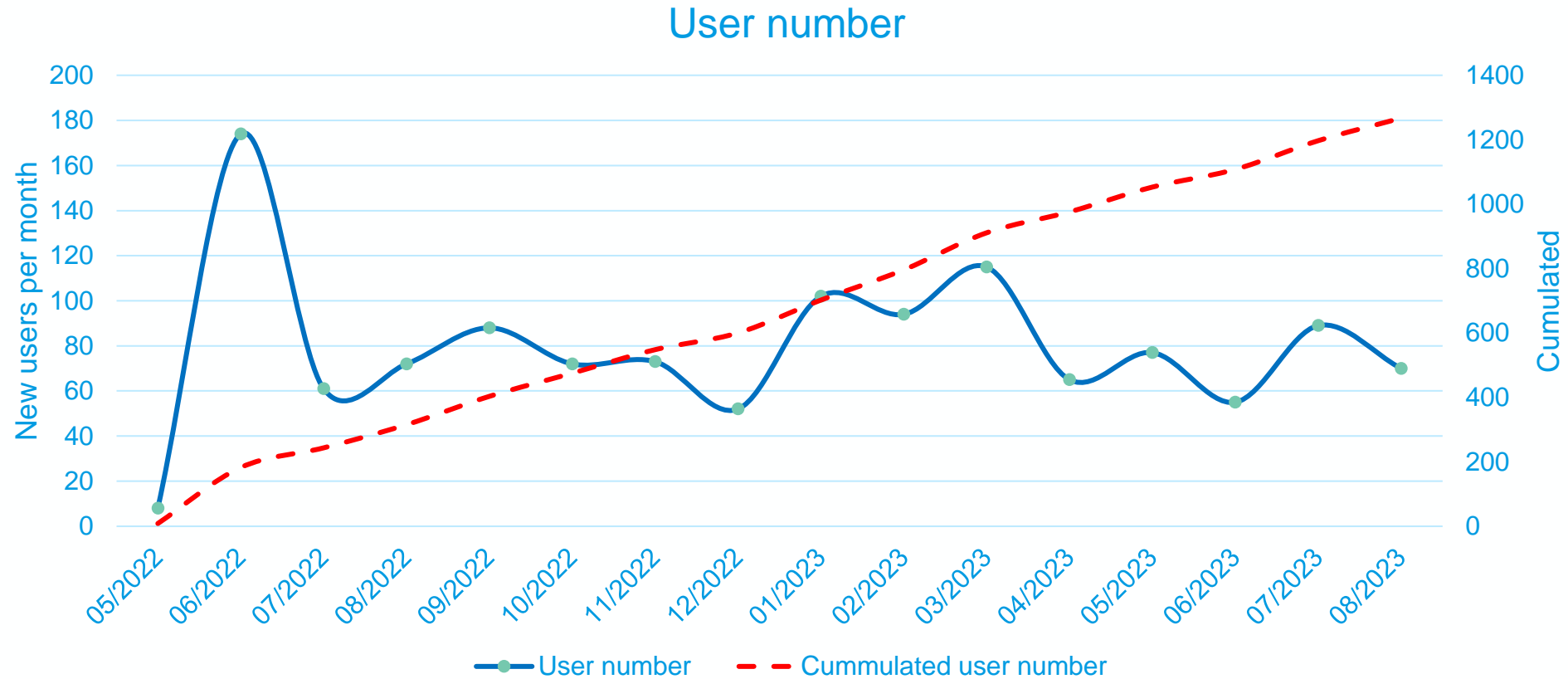


co-funded with



Number of users: 1279

60 to 80 new users per month



Production – Since June 2022



PROGRAMME OF THE EUROPEAN UNION

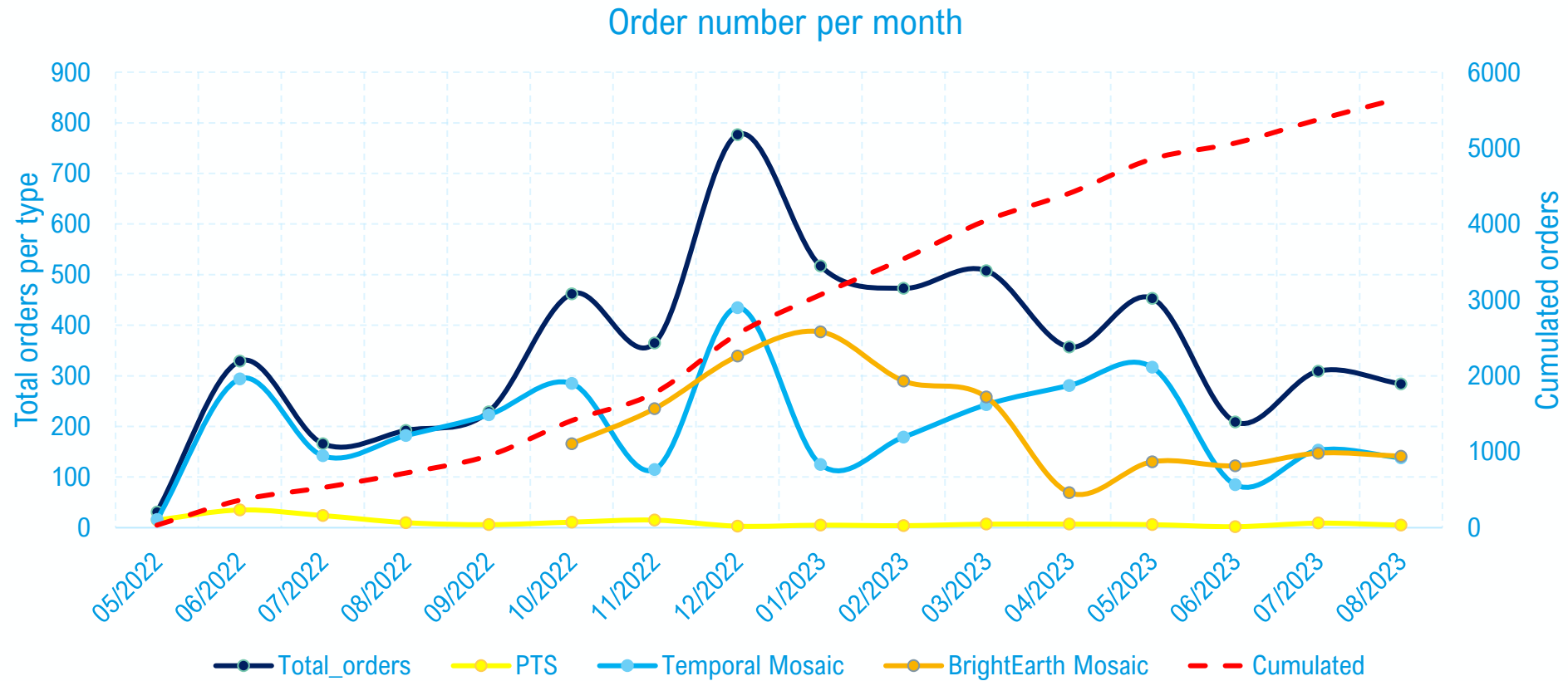


co-funded with



Number of orders: 5684

300 to 500 orders per month



Production – Since June 2022



PROGRAMME OF THE EUROPEAN UNION

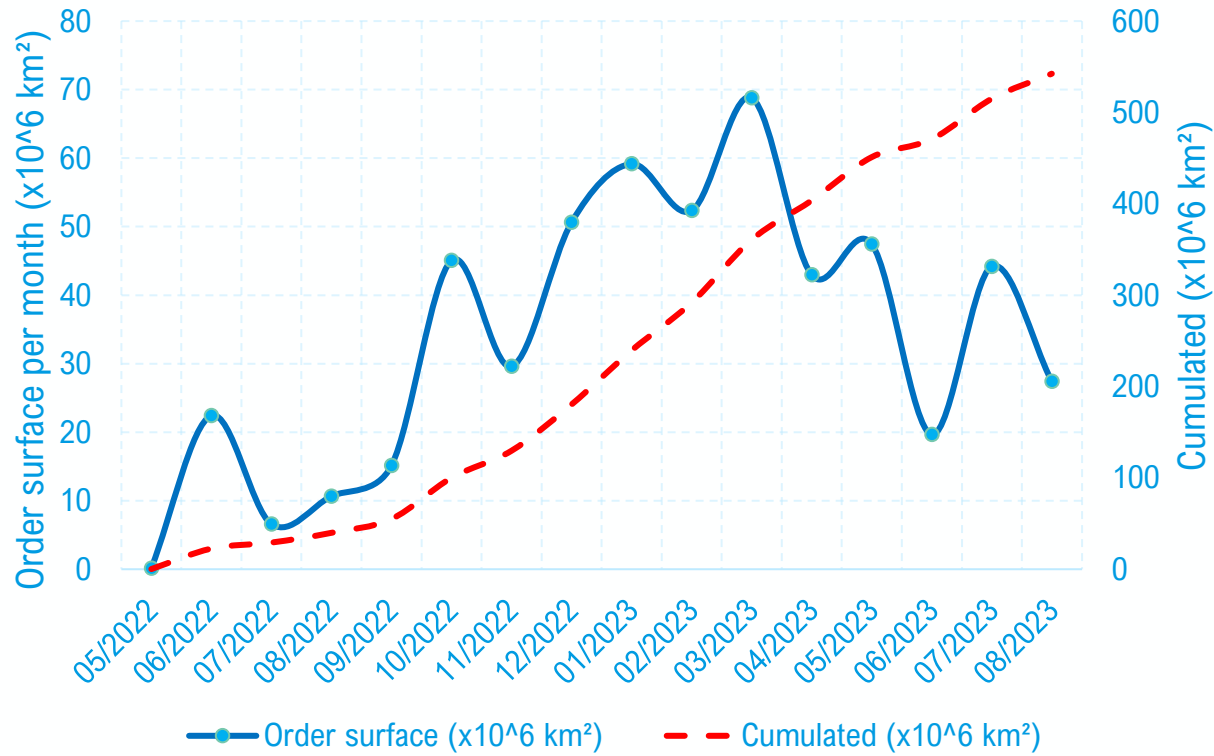


co-funded with



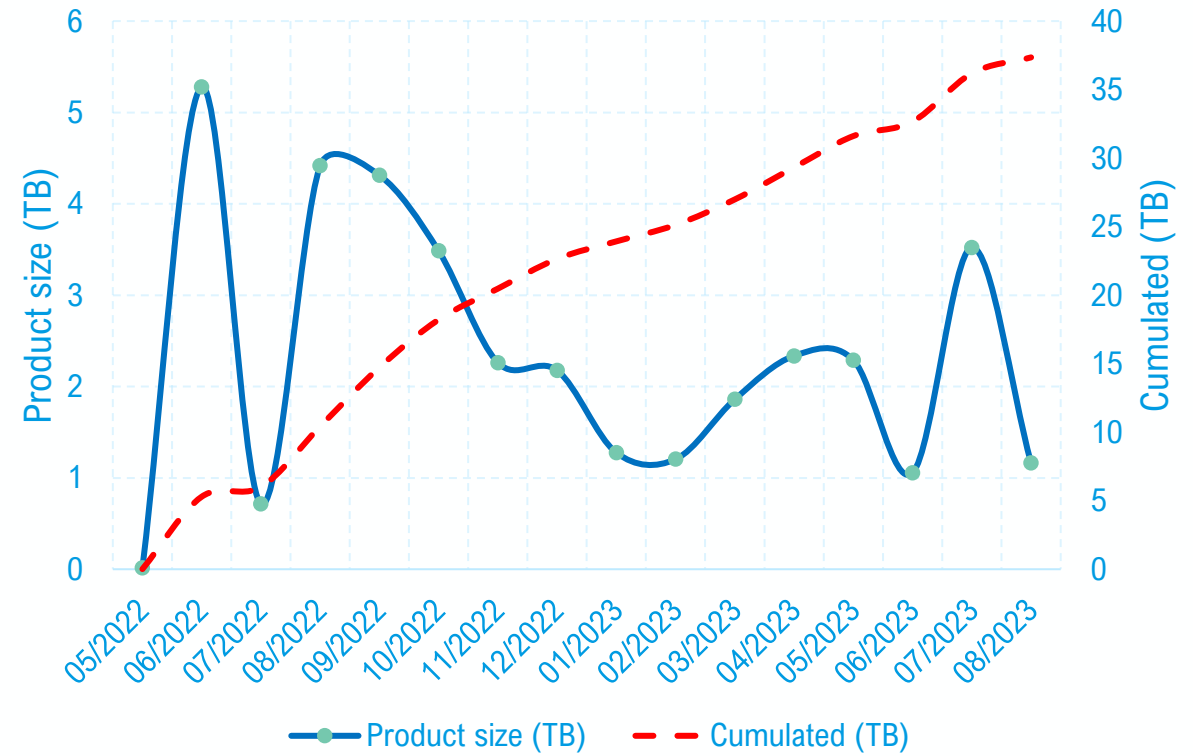
About 550 millions km² > Total Earth surface

Order surface



Now about 2Tb per month

Mosaics volume generated



Sentinel-2 Mosaic over Finland



Imagery / Base Maps / Earth Cover

2017 | Finland | The Finnish Meteorological Institute

The Finnish Meteorological Institute is using Sentinel-2 Global Mosaic Service to produce dekad mosaics shortly after the last day has been imaged. The mosaics are meant as general purpose information and are for example being used in a **pilot service for forest damage assessment after storms**.

Sentinel-2 Mosaic over Bordeaux



Imagery / Base Maps / Earth Cover

2022 | South West France | U-Space

U-Space is responsible for the feasibility study of certain Earth observation missions, as well as system engineering for satellite missions.

In this context, we are testing various data processing algorithms, whether on the ground or on board, and we want to **evaluate these algorithms using simulations of images that our instruments would capture.**

For this reason, we are using Earth images with a ground spatial resolution of around 10 meters as input data, exceeding the capabilities of our current instruments.

Sentinel-2 Mosaic over South-East Asia



Imagery / Base Maps / Earth Cover

2023 | Australia | Geoscience Australia

The media team of Geoscience Australia was in search of a high-quality satellite image showcasing Southeast Asia, which they intended to use for publicity reasons.

Range → latitude : 42°
→ longitude : 32°

Sentinel-2 Mosaic over Canada

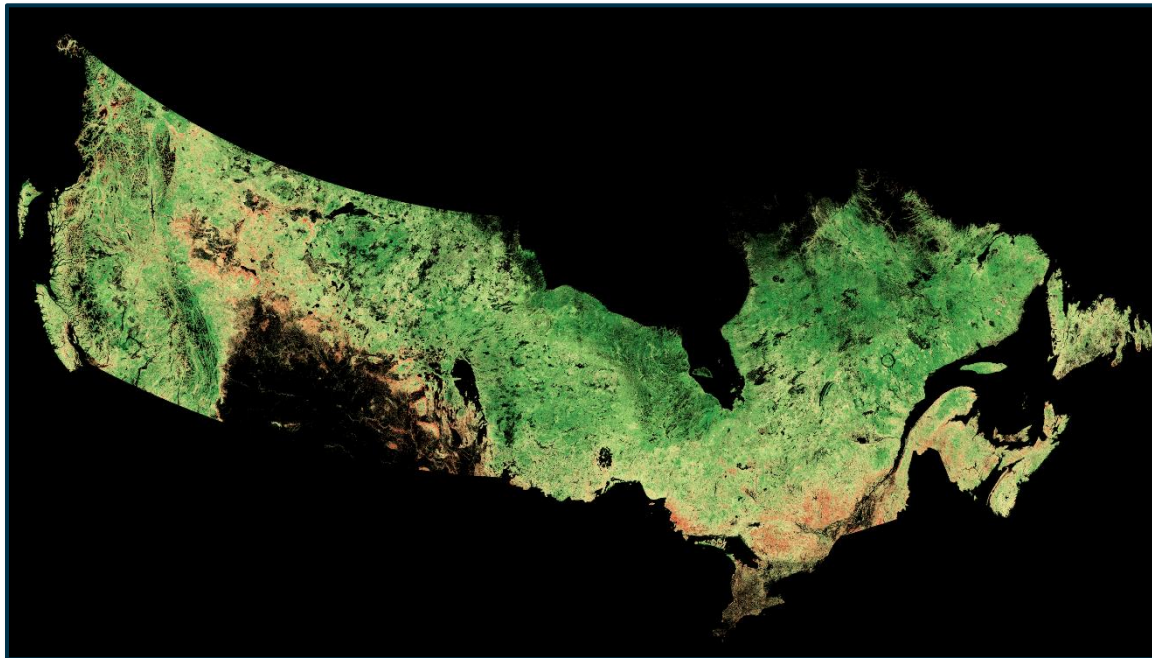
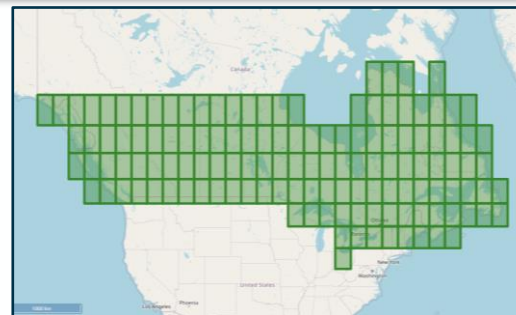


Image by FRMG Inc., Canada.
© FRMG Inc. 2023



Imagery / Base Maps / Earth Cover

2022 | Canada | First Ressources Management Group (FRMG) Inc.

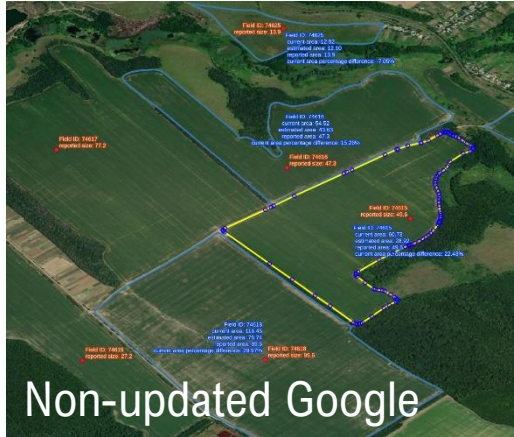
FRMG specializes in the production of cost-effective, accurate, near real-time forest information using satellite images, lidar and other geospatial data.

We succeeded in mapping **the percentage of coniferous trees across Canada at a 20 m resolution** using S2GM temporal mosaic images. Our algorithm was trained to estimate the percentage of conifer trees using more than 40 000 field plots and their corresponding S2GM values.

The quality of the bottom of atmosphere reflectance values of S2GM greatly facilitated the calibration of such a large model.

The resulting map can be used in a large array of applications, ranging from forest management and planning to wildfire risk modeling.

Sentinel-2 Mosaic over Croplands



Non-updated Google



Updates S2GM

Imagery / Base Maps / Earth Cover

2023 | Copenhagen | Agreena

Agreena uses **updated** RGB mosaics for specific AOIs from S2GM to **improve cropland field boundary delineation** for Agreena MRV products.

Farmer cropland field boundaries are a key product for Agreena's farmer platform and for training Agreena's machine learning models based on satellite imagery.

Automatically created field boundaries need sometimes a visual quality assessment to finetune the boundary delineation and align with the field area size reported by the farmer.

High resolution base maps like Google Maps or Bing Maps can be outdated and are not always suitable to correct field boundaries.

S2GM provides a **flexible and customizable** environment to create for you AOI and for your desired imaging period **updated**, cloud free RGB mosaics derived from Sentinel 2 with **good color calibration and optimized pixel selection**.

S2GM – Predefined Mosaic



PROGRAMME OF THE EUROPEAN UNION



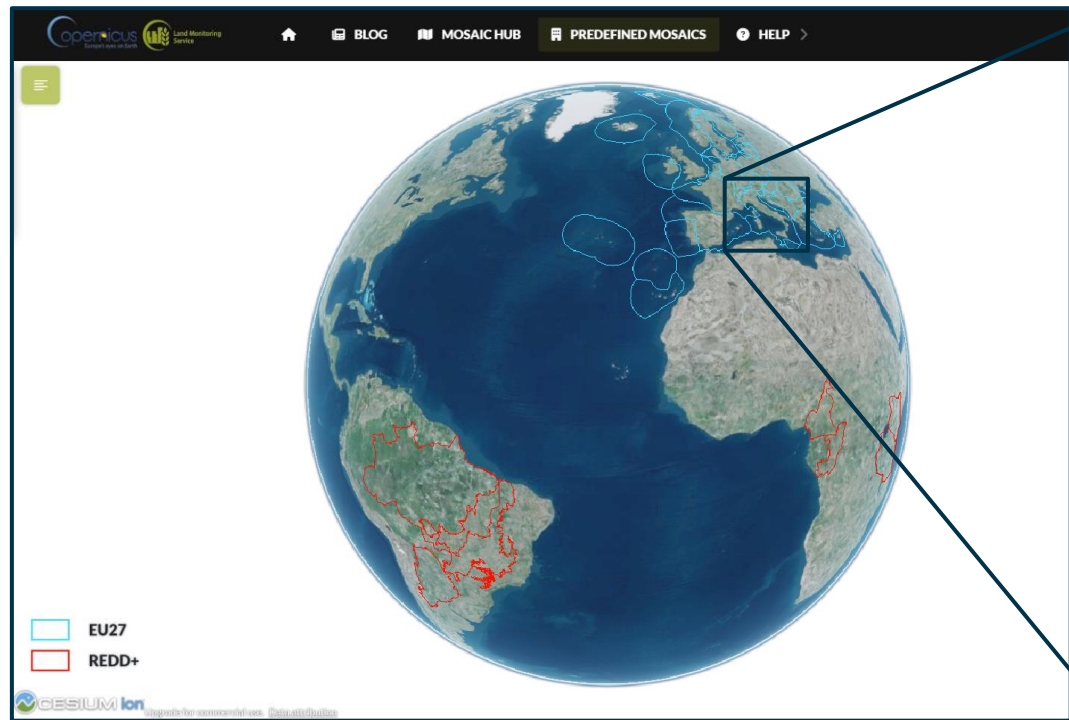
co-funded with



Predefined mosaics are already released for REDD+ and EU27 countries

Reducing Emissions from Deforestation and Forest Degradation (REDD+) is a United Nations initiative which aims to mitigate climate change by enhancing forest management in developing nations.

The '+' represents the additional aspects of forest landscape restoration and the promotion of sustainable forest management.



EU27 ITALY CLOSE X

Description Products

EU27_Italy_2022

EU27 ITALY CLOSE X

Description Products

Overview

Capital: Rome

Official EU language(s): Italian

EU member country: since 1 January 1958

Currency: euro. Euro area member since 1 January 1999

Schengen: Schengen area member since 26 October 1999

Source: European Union country profiles

S2GM Mosaic Example



S2GM – Available in October 2023



PROGRAMME OF THE EUROPEAN UNION



co-funded with



Mosaics from an alternative level2 processor as test products.



Sensor Independent Atmospheric correction (SIAC)

- BRF + per pixel uncertainties
- NBAR + per pixel uncertainties
- SIAC cloud mask

<https://github.com/MarcYin/SIAC>

Yin, F., Lewis, P. E., and Gómez-Dans, J. L.: Bayesian atmospheric correction over land: Sentinel-2/MSI and Landsat 8/OLI, *Geosci. Model Dev.*, 15, 7933–7976, <https://doi.org/10.5194/gmd-15-7933-2022>, 2022.

Albedo product + uncertainties using HR Albedo procedure

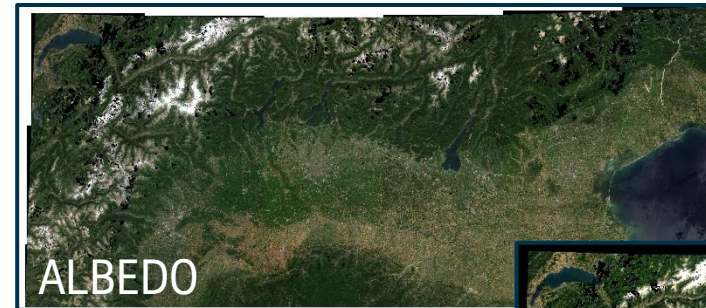
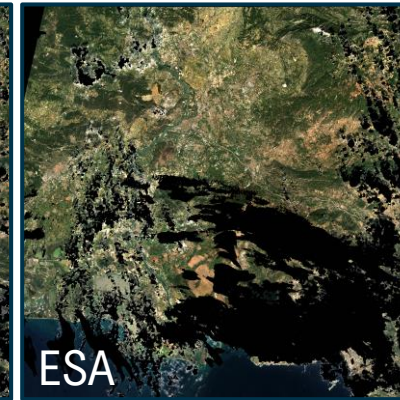
<https://github.com/RS-UCL/hr-albedo/>

<http://www.hr-albedo.org/>

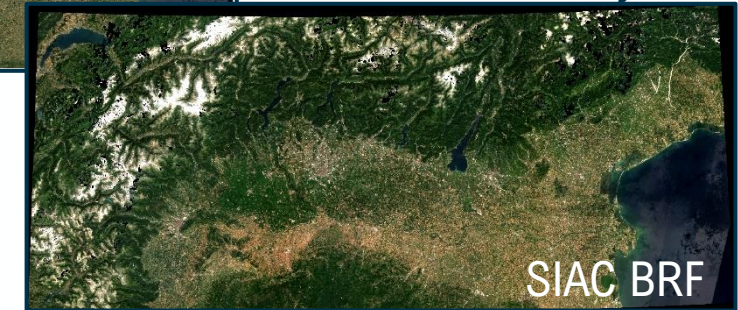


Follow on will be **LAI+unc** and **FAPAR+unc** (Q4 2024).

SIAC BRF on T31TFJ (South France)



7° x 2.5° North Italy



S2GM – Available in October 2023



PROGRAMME OF THE EUROPEAN UNION



co-funded with



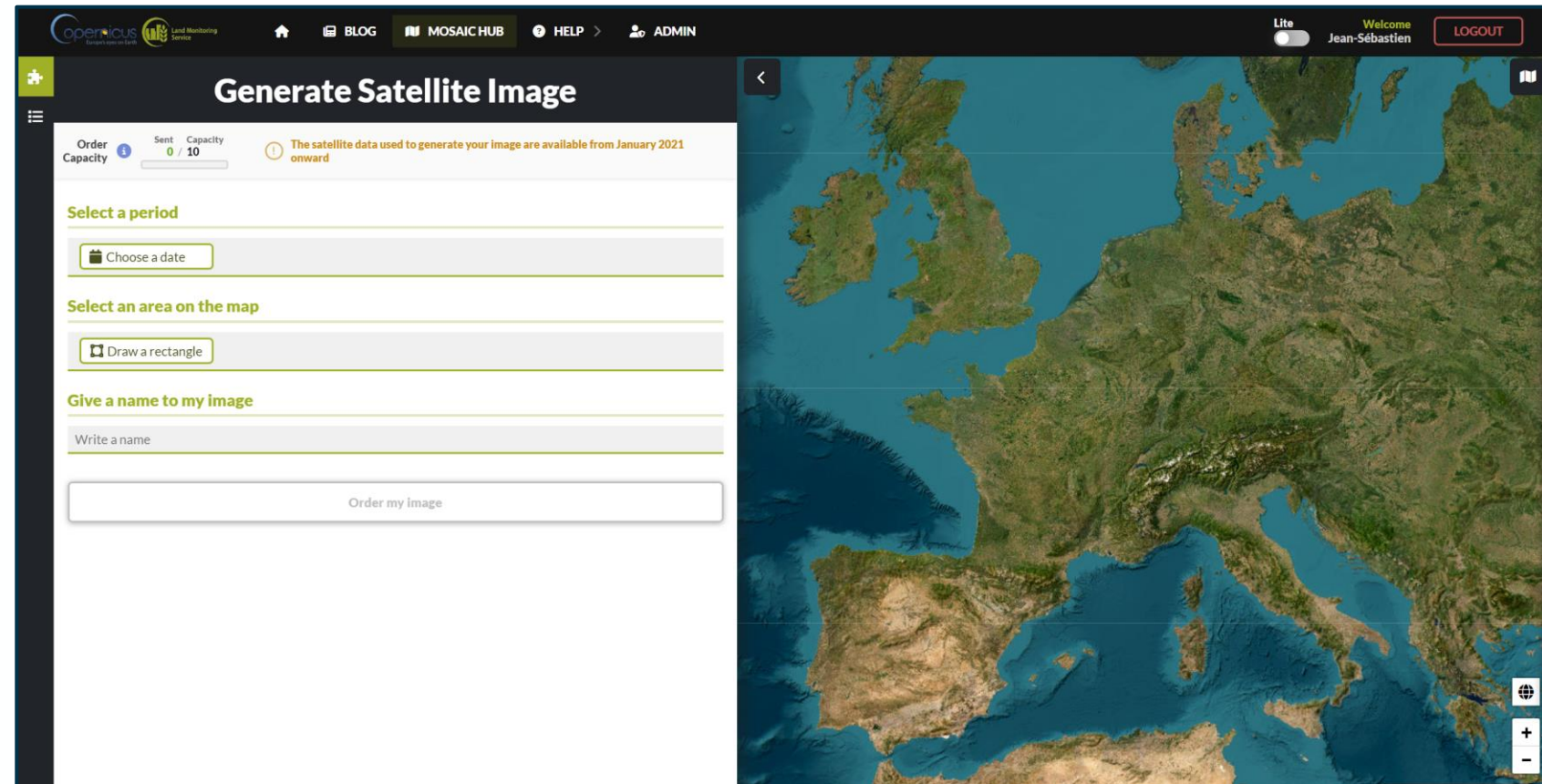
Basic mode (versus Advanced)

Limited options (month and AOI)

Only provide a Quicklook

No need for downloader installation

➔ **Reach non-expert users**



Thank you!



PROGRAMME OF THE
EUROPEAN UNION



co-funded with



STAY CONNECTED

EVENTS, ONLINE, and MAP VIEWERS



@CopernicusLAND



land.copernicus.eu/global



land.copernicus.eu/global/viewing

<https://s2gm.land.copernicus.eu/blog>



Tick-Tock

Yellowstone

Hotspots around the world seen with S2GM: n°3

2023-05-19 09H30

general



The Pacific Heart

Hawaii

Hotspots around the world seen with S2GM: n°2

2023-05-12 09H30

general

SOCIAL NETWORKS



S2GM Image of the week

Since November 2022
Fridays 9:30 AM CEST

PUBLICATIONS ENREGISTRMENTS IDENTIFIÉ(E)



→ THE EUROPEAN SPACE AGENCY



EU27 countries

