

Dalaman Airport and our sustainability initiatives

Javier Lopez Rivero
Asset Manager
Ferrovial Airports

April 2025

ferrovial
airports



About Ferrovial

Who we are

Ferrovial is one of the world's leading infrastructure operators and is committed to developing sustainable solutions. We are committed to the highest level of operating excellence and innovations. We create value for society and our shareholders, investors and employees.

Vision

Develop and operate innovative, efficient and sustainable infrastructure while creating value for our stakeholders

Purpose

**"Sustainable
infrastructure for a
world on the move"**

Revenues
9,147 M€

EBITDA
1,342 M€

Capitalization
29,620 M€

DLM Airport Project - Overview

Operating Period

- 365 days year-round
- 24/7 round the clock
- No curfews
- Level 2: Slot Monitoring

Terminals

- T1: 95,000 m² – since 2006
- T2: 125,000 m² – since 2018

Passengers

- 5.6m in 2024

Desks & Counters:

- Check in: 155
- Passport control: 66

- A/C Parking Capacity: 57
- Apron Area: 361,019 m²

Runway

- 3,000m long
- 45m wide
- 24 ATM/hour
- PCN: 110

- Pax Boarding Bridges: 20
- Gates: 30



The Journey Towards Sustainability at Dalaman Airport

We are breaking new ground with the world's largest solar power plant roof project built on the airport terminal rooftop

15,000
solar panels

**8.25 MW in DC
/ 4.8 MW in AC**

c. 55% of
Airport energy
needs

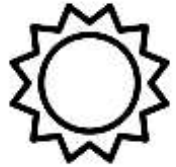
More than
10,230 MWh
annual
production

200,000 trees
preserved
annually

Reducing
emissions by c.
4,500t CO2



How do we make this happen?



1

Solar irradiation



2

Favourable regulation that allows
Self-Consumption



3

Favourable Metering scheme

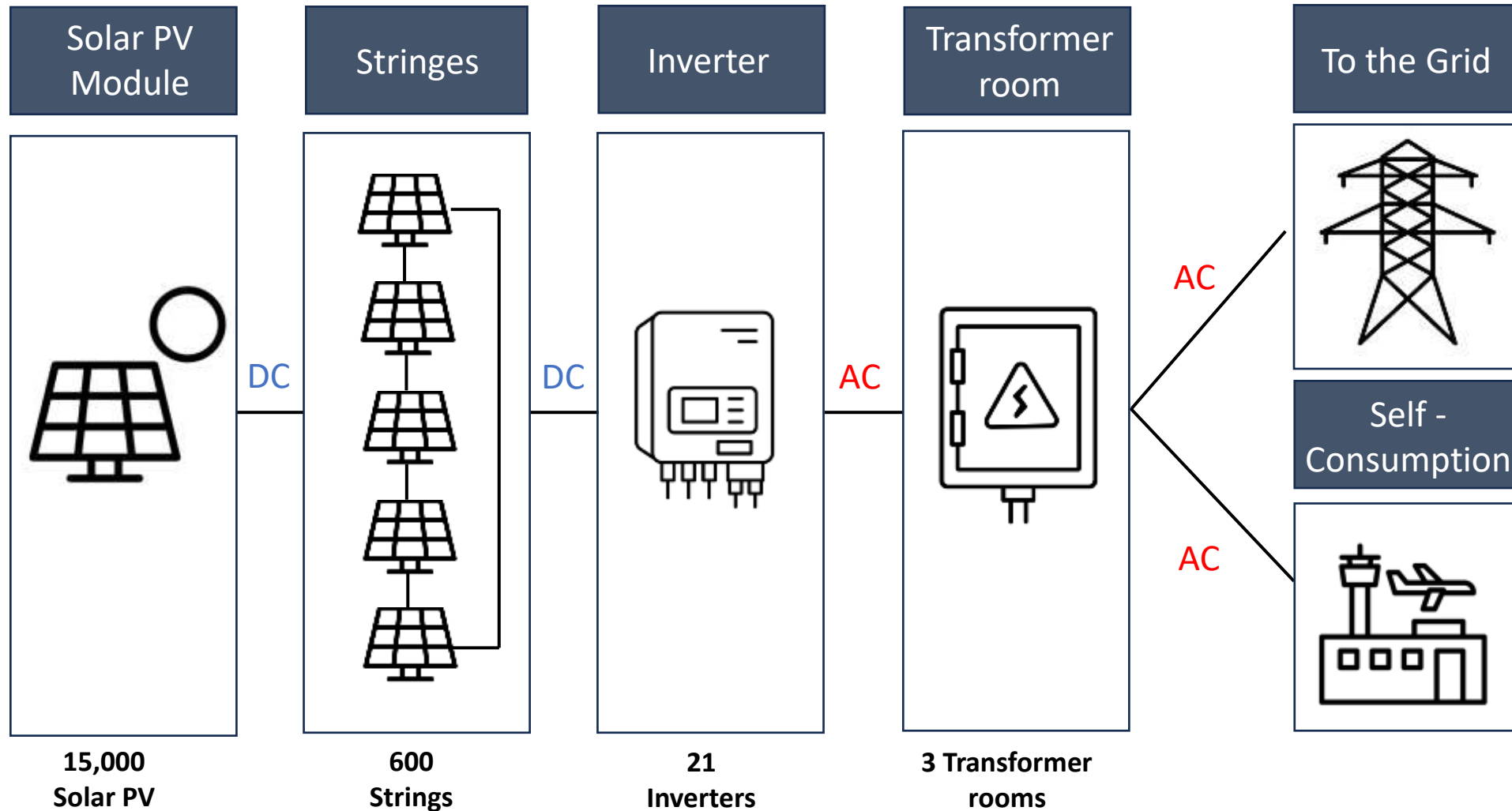


4

Investments in infrastructure from
local energy operators/distributors



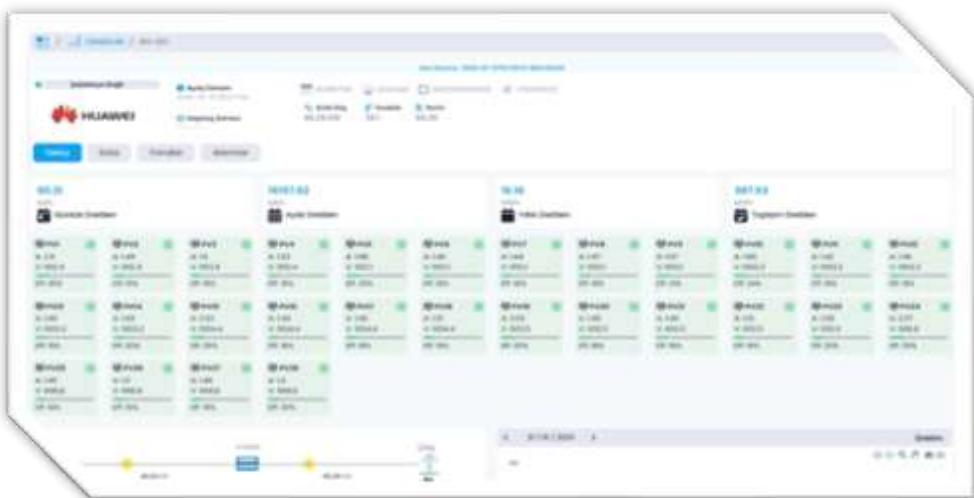
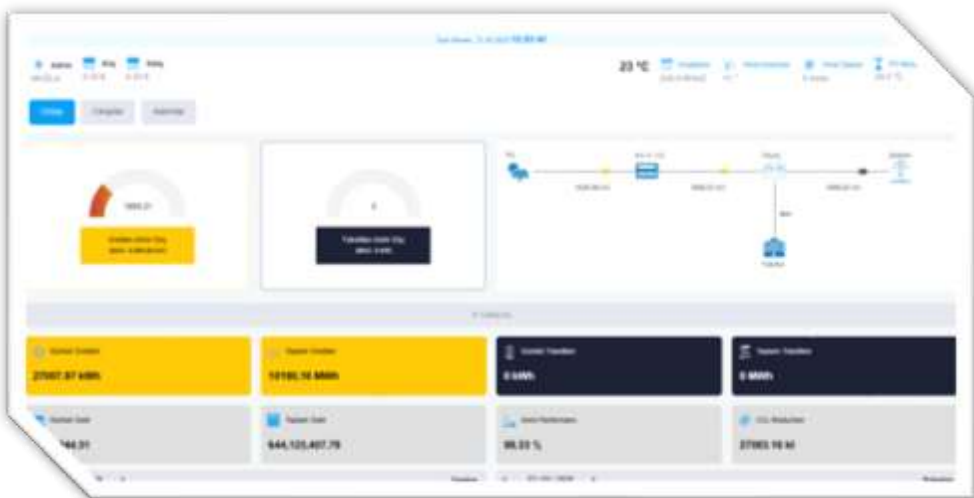
How Solar Self-Consumption PVs actually works?



How do we monitor the energy we generate and consume?



Samples of the performance of the Solar Project at Dalaman Airport’s Automation Center



Final video of the Project (Phase I) and more to come...



... As we will start soon the construction of our Phase II

Aiming 100%
electricity¹

10,500 Solar
Panels

6.2 MW in DC /
4.45 MW in AC

Aiming to be
operating by
2026



Note (1): estimation based on 2023 Consumption

ferrovial
airports



... Thank you!