

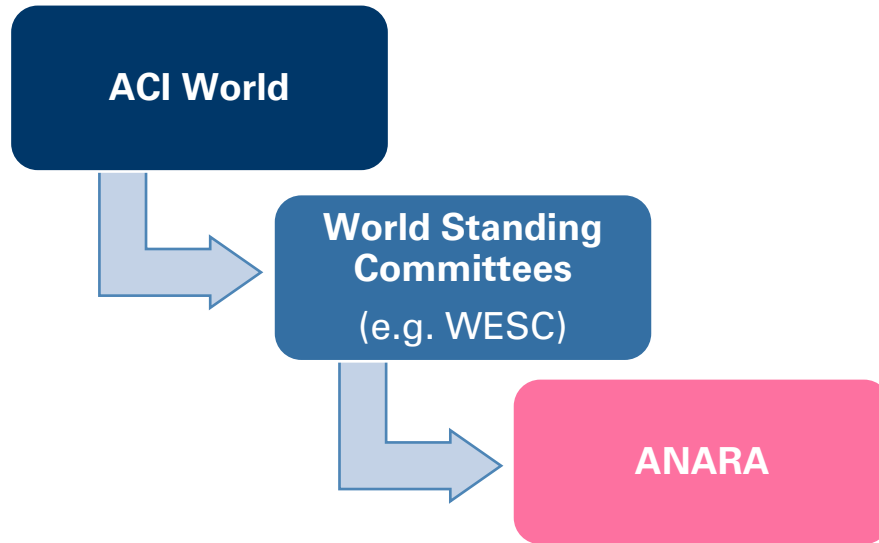


# ACI ANARA: Airport's Non-Aeronautical Revenues and Activities

ACI Europe  
Commercial & Retail Conference  
Helsinki, Finland  
October 23, 2024



# Airport's Non-Aeronautical Revenues and Activities



- **Sub-Committee of ACI's World Economics Standing Committee (WESC).**
- **Forum for experts to exchange knowledge and intelligence on non-aeronautical revenues.**
- **Develops best practices and recommendations for the improvement of airports' commercial businesses.**
- **Organised by working groups on specific subjects.**

# ANARA Membership

## Airports

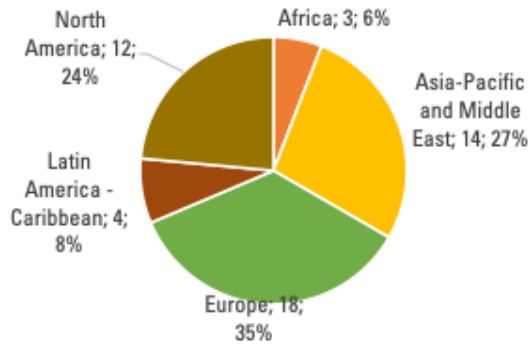


## World Business Partners

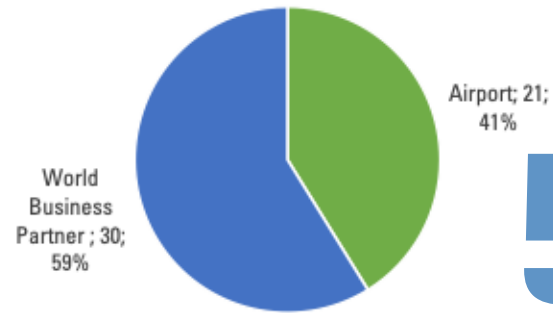


# ANARA Composition

Members by Geography



Members by Types

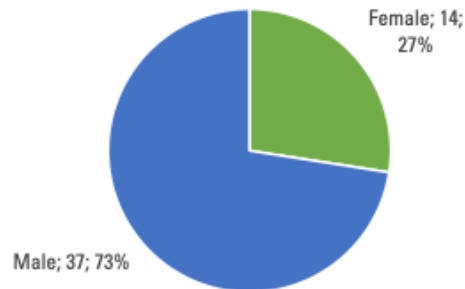


51

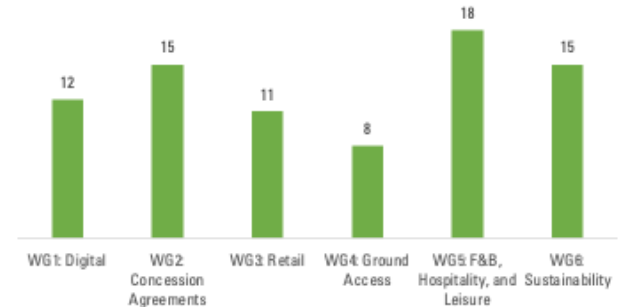


Members

Members by Gender



Members by Working Groups



# ANARA WORKING GROUPS 2024

## WG1

Digital



## WG2



Concession agreements

## WG3

Retail



## WG5

F&B, Hospitality,  
and Leisure



## WG4

Ground Access



## WG6

Sustainability

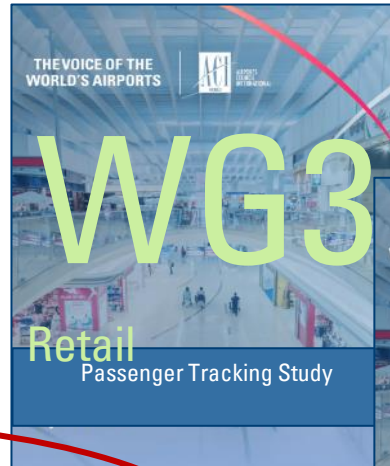


# PUBLICATIONS IN Q3-Q4 2024

3. White Paper on Airport Lounges



4. Passenger Tracking Study



5. Enhancing Revenue Through Optimized Airport Landside Access



# WG4 WHITEPAPER UPDATES 2024



Updated structure and more global content approach in 2<sup>nd</sup> edition:



## Significant Trends

Discussion of emerging trends and “hot topics” for airports in regards to landside access



## Modes of Transportation

Description of 11 transport modes, incl. the newly added *micro mobility* and *electric vehicle infrastructure*

Added case studies for modes; TNCs (e.g. Uber), eVTOL, micro mobility, vehicle parking



## Sustainability and IT

Considerations for sustainability in regard to landside access

Discussion of supporting IT systems

# Focus case 1: Uber implementation at PRG



**Battling Negative Reputation:** Prague's taxi services has historically faced criticism for overcharging and unethical practices.

**Need for Reform:** Václav Havel Airport sought solutions for clearer fare information and improved reliability.

**Transition to Modern Services:** App-based taxi services gained popularity, leading to a formal concession process.

**Uber Partnership:** In 2023, Uber became the official taxi provider, enhancing service quality and passenger trust.

**Diverse Booking Options:** The system includes the Uber app, physical kiosks for fare calculations and payment, and in-person service desks for better accessibility (e.g. cash payment).



## Focus case 2: Micro mobility hub at DUS

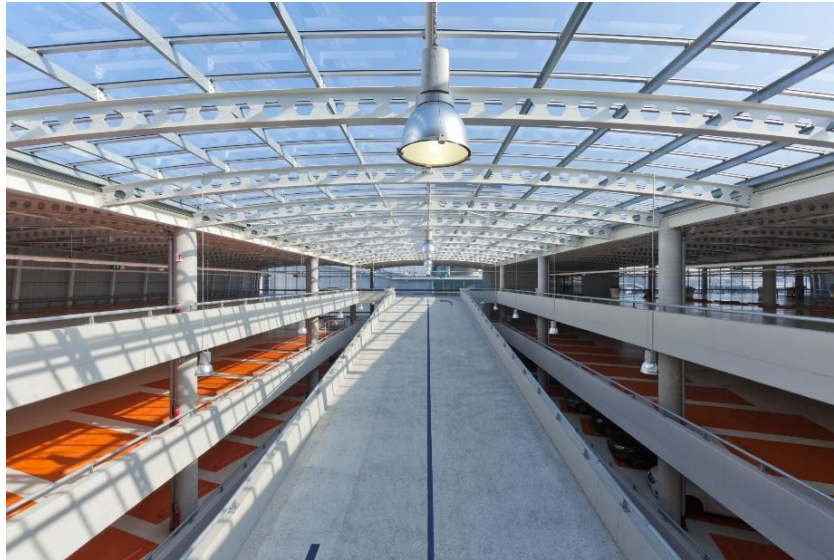


**Diverse Mobility Options:** The DUSsharing hub at Düsseldorf Airport offers passengers a range of transportation alternatives, including electric scooters and e-bikes, for sustainable travel to/from the nearby city centre.

**Convenient Location:** Located just a two-minute walk from the terminal and with additional pick-up and drop-off zones throughout Airport City.

**Seamless Vehicle Rental:** All vehicles available at the hub can be rented directly on-site, with options listed in the respective provider's apps for convenience (incl. Free2move, SHARE NOW, Lime, and Bolt)

## Focus case 3: Premium parking at AMS



**Premium Location:** Located in direct connection to Terminal 3 and near the VIP entrance, with easy access to the A4 motorway.

**Spacious Design:** 16,000 m<sup>2</sup> facility with 400 vehicle capacity, featuring extra-wide 2.80-meter parking bays and column-free spaces.

**Innovative Architecture:** Semi-open steel grid façade for natural ventilation, central skylight for natural illumination, and “bubble deck” concrete floors.

**Exclusive Amenities:** Comfortable waiting area with complimentary coffee and workspaces.

**Convenient Booking:** Online reservation recommended, with drive-in access available for Privium Plus members.

## Focus case 4: “Flying taxis” at DXB



**Strategic Location:** Skyports’ eVTOL facility at Dubai Airport is expected to open in 2026 and is positioned for seamless integration with airport infrastructure and Dubai Metro network.

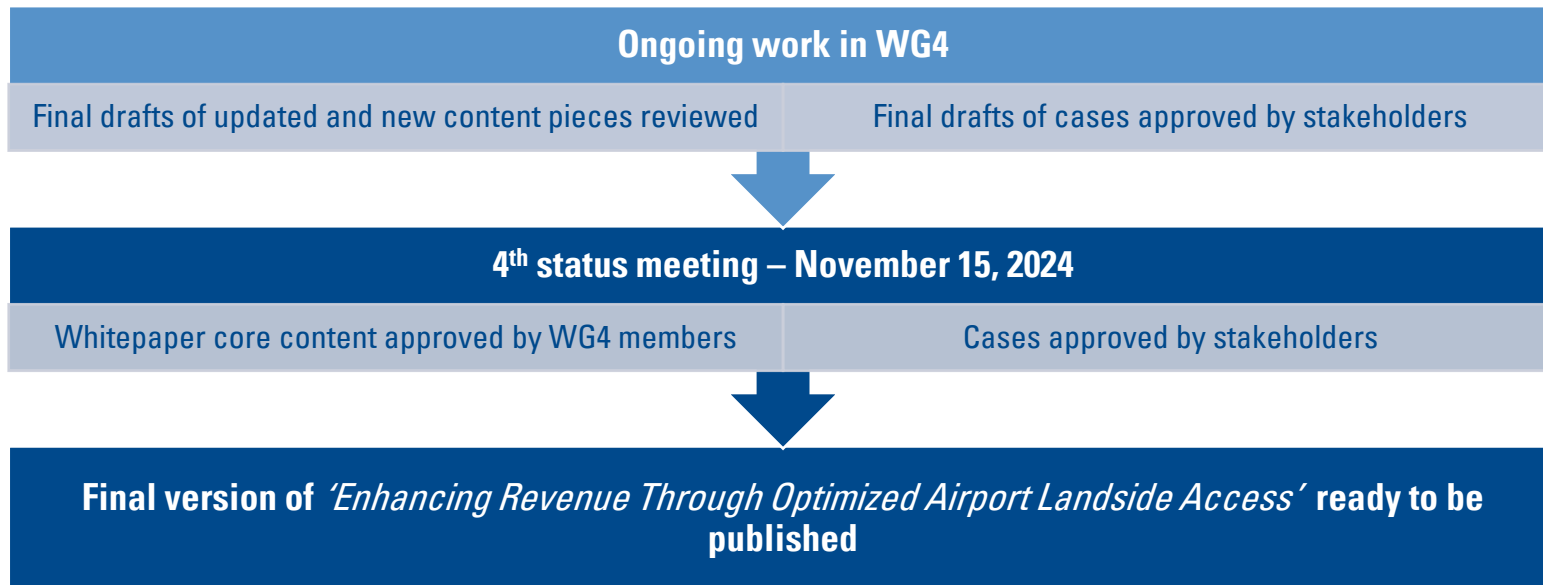
**Innovative Design:** Elevated deck structure with state-of-the-art facilities for eVTOL aircraft, featuring sustainable architectural elements.

**Reduced Travel Times:** Air taxi service aims to cut journey times significantly, e.g., DXB to Palm Jumeirah in 10 minutes vs. 45 by car.

**Passenger Comfort:** Interior designed with warm, natural materials for a luxurious environment, complemented by green landscaping.

**Integrated Booking:** Advanced reservation system connects with other RTA transportation options for seamless multimodal travel – launching by 2026.

# WG4 WHITEPAPER NEXT STEPS



# PUBLICATIONS / DOWNLOADS 2022-24



**Concession Agreements: Guide for Airport Managers and Commercial Operators**



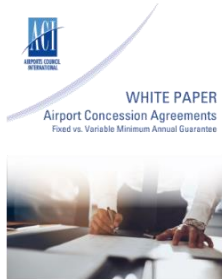
**Retail Optimization for Small and Medium-Sized Airports White Paper**



**White Paper – Path to Recovery: The Airport Retail Perspective**



**White paper – Regulatory Threats and Opportunities in Airport Retail**



**White Paper: Airport Concession Agreements**



**White Paper: Business Models between Airport Operators and Concessionaires**



**Handbook: Optimal Integration of Airport Ground Access Services**



**Policy Paper: Sustainable Airport Ground Access**

Available at the ACI World Publications site [here](#)



# Thank you



**Tom Mockett**  
tom.mockett@naco.rhdhv.com



**Adam E. Pedersen**  
adam.pedersen@naco.rhdhv.com



