

"It is in giving that we receive..."

Marius Nasta Institute's experience after participating in
the APCI's summer school 2023

*As.Lic. principal Daniela Trandafir, director de îngrijiri
As.Lic. principal Daniela Voinea, asistent șef CPU*



"EVERY JOURNEY
OF A THOUSAND
MILES BEGINS WITH
A BROKEN FAN
BELT AND A LEAKY
TIRE..."



SWOT

Strengths

- management open to change
- positive organizational culture
- promoting and supporting evidence-based healthcare

Weaknesses

- the low level of professional training of new employees
- the deprofessionalization of colleagues from less demanding departments
- lack of opportunities to update information for nurses

Opportunities

- attending courses, conferences, summer schools
- new methods of diagnosis and treatment

Threats

- inadequate procedures/protocols
- lack of knowledge of evidence-based care in care planning
- financial limitations.

● BEGINNING...



Blood products traceability



Critical patient care



Role of the nurse in the bronchial endoscopy laboratory



VAD management

The material base was poor, improvised, mostly we relied on mannequins from companies...



CVP insertion and maintenance

INSPIRATION

APCI 2023 / 2024 Summer School

APCI conferences
(2019 – 2024)

Train the trainers
2023

Systematic reviews-
course



OAMGMAMR Bucharest
Conferences 2015 - 2024

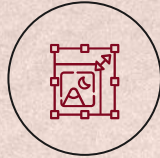
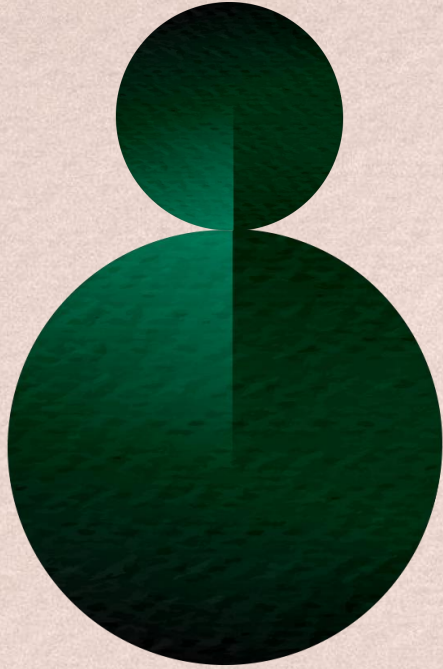


I MUST FLY

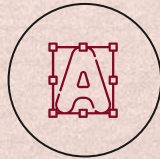


MY PEOPLE NEED ME

Initiating health care studies



1. "Clean hands save lives - improving hand hygiene compliance".



2. Strategies for preventing complications associated with peripheral venous catheters for nurses in two pulmonology wards of the Marius Nasta Institute of Pneumophthiology

1. "Clean hands save lives - improving hand hygiene compliance"

70% of subjects mentioned dirty staff hands as the main way of germ transmission

11.6% knew that disinfecting hands with alcohol solutions is faster than washing hands with soap and water

14% knew that hand sanitizing with alcohol is more effective than hand washing with soap and water

48 SUBJECTS INCLUDED IN THE STUDY

19 CPU
24 PAEDIATRICS

1 doctor

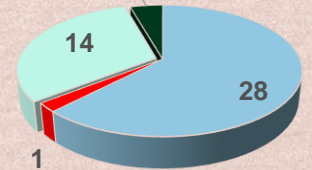
28 nurses

14 auxiliary staff

2 stretchers bearers

All subjects had difficulties in identifying the 5 moments of hand hygiene and do not know the benefits

Subjects included in the study



■ nurses
■ doctors
■ auxilliary staff
■ stretcher bearers

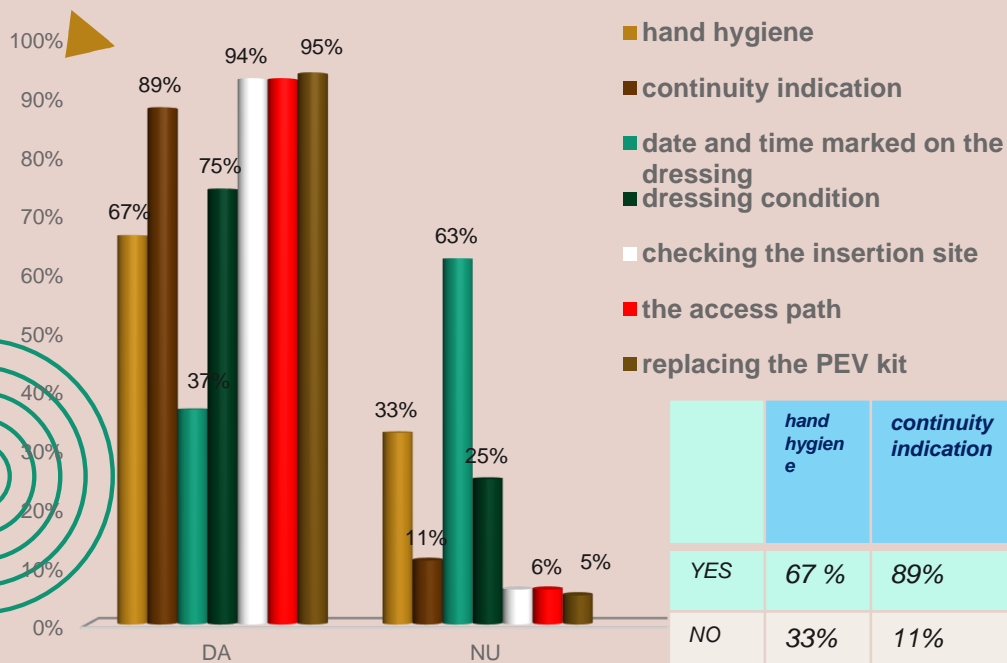
32.5% said the use of alcoholic solutions is the main cause of dry skin

90.7% mentioned that hand washing and hand sanitizing should be done sequentially

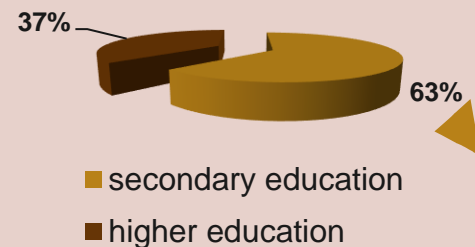
53.5% knew the minimum time needed to disinfect hands with alcohol solutions

2. Strategies for preventing complications associated with peripheral venous catheters for nurses in two pulmonology wards of the Marius Nasta Institute of Pneumophthiology

Compliance audit results for the use of high-impact interventions in the prevention of CVP-associated infections



Nurses' education level

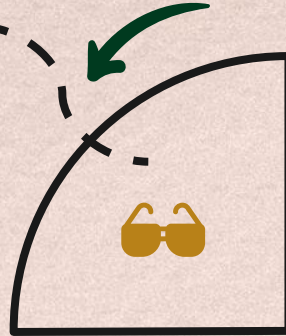


	<i>hand hygiene</i>	<i>continuity indication</i>	<i>date and time marked on the dressin</i>	<i>dressing condition</i>	<i>checking the insertion site</i>	<i>he access path</i>	<i>replacing the PEV kit</i>
YES	67 %	89%	37%	75%	94%	94%	95%
NO	33%	11%	63%	25%	6%	6%	5%

We had a lot of fun, ease and enthusiasm...

1. Initial assessment of knowledge

- knowledge assessment questionnaire



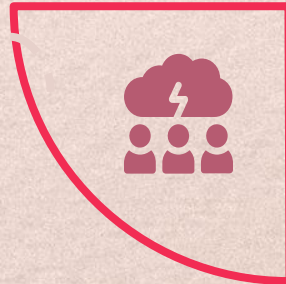
3. Post-training evaluation

- the application of the same evaluation questionnaire;
- feedback questionnaire



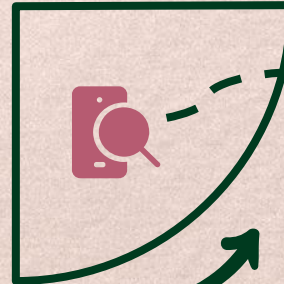
2. Organizing courses:

- course support
- practical demonstrations
- hands-on activities
- IAAM presentation



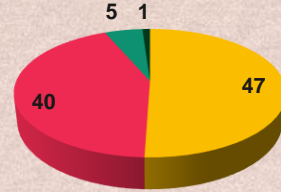
4. Revision of specific procedures according to international guidelines

- consultation of guides;
- identification of barriers, strategies for overcoming barriers





Breakdown by professional category

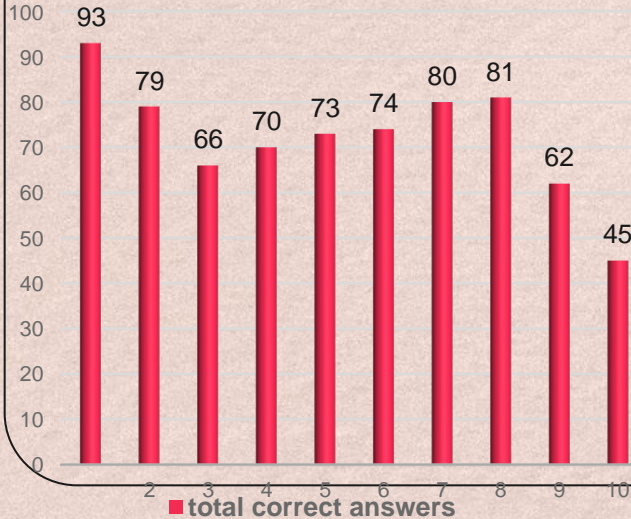


■ nurses ■ auxiliary staff
■ medical registrar ■ doctors

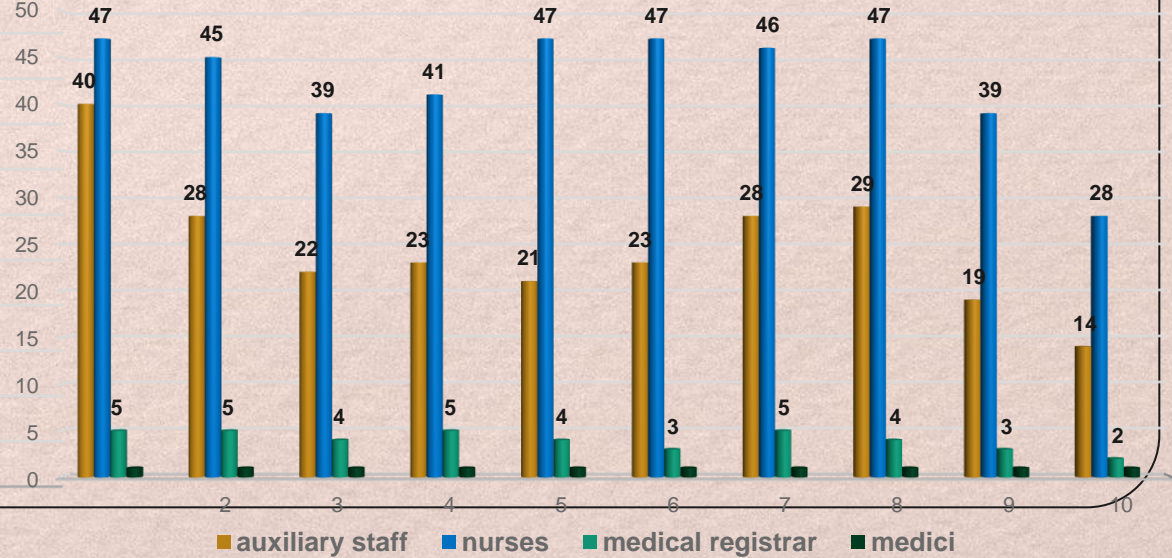
Hand hygiene training



Total correct answers to post-course evaluation



Correct answers to the post-course evaluation by professional category

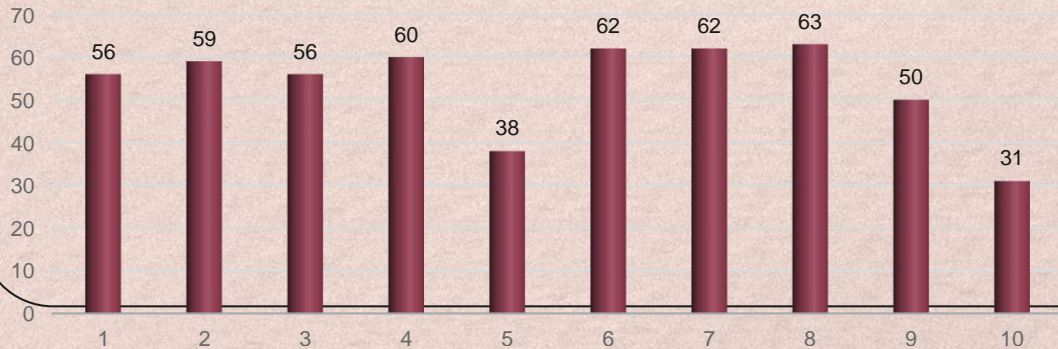


"Implementation of major interventions to prevent CVP complications"

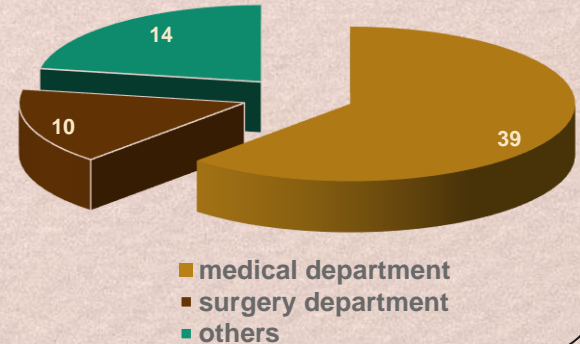


Questions that made it difficult for nurses to assess their knowledge after the course	Correct answer
<p>5. It is recommended to change the dressing at the CVP insertion site:</p> <p>a. daily; b. every 3 days; c. when indicated (it is soiled or if it is no longer securely in place); d. don't know</p>	38 / 63
<p>10. When lipid emulsions or blood products are not administered by CVP, it is recommended to replace the infusion set:</p> <p>a. every 24 hours; b. every 72 hours; c. every 96 hours; d. do not know</p>	31 / 63

Total correct answers to postcourse evaluation



Breakdown by specialties





CLEAN HOSPITALS DAY - October 20, 2023



Cleaning in the hospital - a never-ending story? !!?

Correct answers to the assessment test after the cleaning course



Questions that made it difficult for nurses/carers to assess their knowledge after the course

Correct answer

2. When removing sharps the following should be taken into account, except:

- a. sharps already inserted in the container shall not be recovered
- b. sharps containers shall be removed when completely filled
- c. sharps shall be removed immediately after use
- d. sharps are not pressed into the sharps container to make more room
- e. sharps shall be disposed of at the point of use

8 / 14

3. The following statements about the use of disposable gloves are false:

- a. at the end of the procedure the gloves are washed with soap and water and then disposed of in the hazardous waste container
- b. at the end of the procedure the gloves are disinfected and then disposed of in the hazardous waste container
- c. not all patient contact activities require the use of disposable gloves
- d. all patient contact activities require the use of disposable gloves
- e. at the end of the procedure, gloves shall be washed with soap and water and then disposed of in the domestic waste container

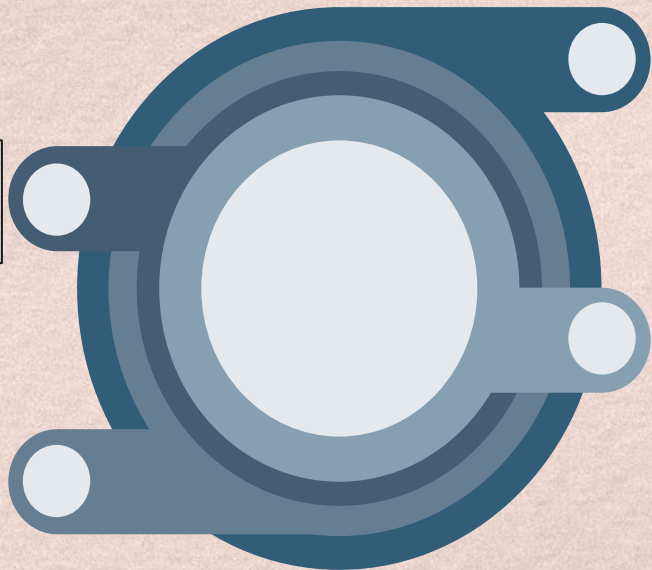
8 / 14

4. The container intended for the collection of sharps shall have the following characteristics, except:

- a. Impermeable and leakproof
- b. have a temporary closure system
- c. be labeled with the starting date of use of the container by ward, health facility, ward in which it was used
- d. be stable on the treatment table
- e. have a permanent closure system

7/14

And we are expanding ...



Non-invasive ventilation

**Critical patient
hygiene**

EKG for nurses

**Thoracic catheter
management**

Tracheostomy care

ALS



FEED BACK

Propunerile dumneavoastra pentru imbunatatirea organizarii / desfasurarii cursului

Propuneri de imbunatatire a cursului

Am
la un
timp

Am avut lucruri mici

Efectuarea

unor cursuri care nu permit

Propunerile dumneavoastra pentru imbunatatirea organizarii / desfasurarii cursului

ca
in
m

Consider acest curs ca fiind foarte important, insa trebuie extras si in practica (cu sensul ca det personalul ar trebui instruit si totodata sa se asigure materiale necesare (derivate) la indemana, la polul participantilor)

Propunerile dumneavoastra pentru imbunatatirea organizarii / desfasurarii cursului

Key de igiena aerului de exemplu
activitatea infirmierilor / inginerilor

Our team



Daniela Trandafir



Mihaela Constantin



Romeo Colici / Anca Simionescu



Olga Dănilă



Mădălina Crețoi



Daniela Voinea



Arina Balaita



Ileana Stanciu



Oana Popescu



Claudina Dănilă



Oana Parlițeanu



Sabina Manolescu



Mădălina Preda

Take home messages

- Change begins with each of us;
- The training completed with a written report with acknowledgment signatures is not the equivalent of a course based on the latest scientific evidence;
- Form teams of instructors involving the young generation to take over this activity; it gives you the opportunity to pass the baton to create greater things

“Live as if you were die tomorrow. Learn as if you were to live forever”
(Mahatma Gandhi)

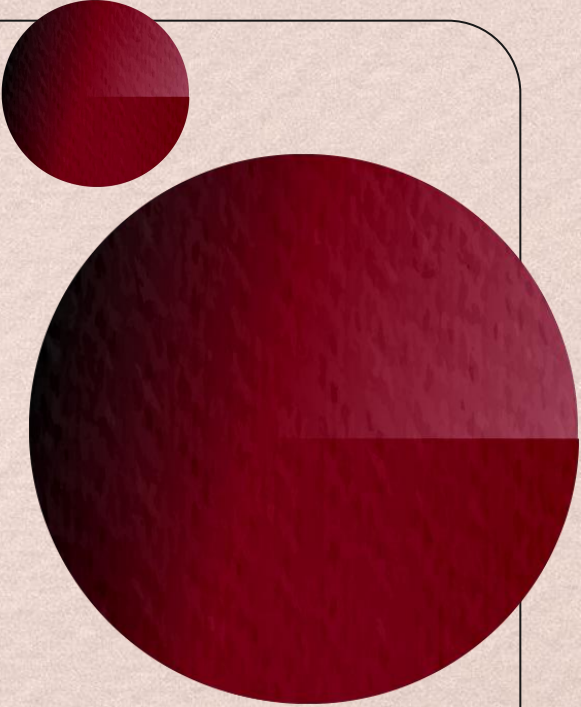
Questions?

dzarughian@gmail.com

voineadaniela72@yahoo.com



Thank you!



CREDITS: This presentation template was created by **Slidesgo**, including icons by **Flaticon**, infographics and images by **Freepik**