



— SOS Pantanal

20
23

www.sospantanal.org.br



The Pantanal

WORLD HERITAGE SITE AND BIOSPHERE RESERVE

150.958 KM²

LOCATED IN THE UPPER PARAGUAY BASIN (BAP)

holds the largest part of its territory between the states of Mato Grosso and Mato Grosso do Sul, including some areas of Bolivia and Paraguay also.

212
MAMMAL SPECIES



11
MICRO REGIONS

Cáceres, Poconé, Barão de Melgaço, Paraguai, Paiguás, Nhecolândia, Abobral, Aquidauana, Nabileque, Miranda and Porto Murtinho

269
FISH SPECIES



4

BIOMES IN THE BAP

Pantanal, Cerrado, Amazon and Atlantic Rainforest



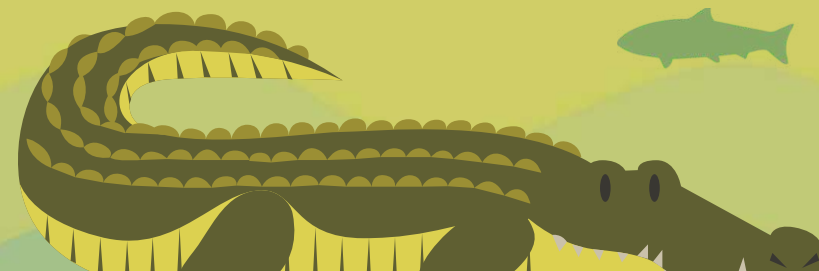
80-150

MEDIUM HEIGHT

extremely plain region, with average heights between 80 and 150 meters high

98

REPTILE SPECIES



1800

PLANT SPECIES

650

BIRD SPECIES





— Our Mission

Our mission is to guarantee the conservation of the Pantanal through the balance between economic, social and environmental development.

— Board Members

Alexandre Bossi | Angelo Rabelo | Edna Dias | Lilian Esteves |
Marcia Hirota | Marina Mandetta | Mario Haberfeld | Mario Mantovani |
Neiva Guedes | Pedro Camargo | Raquel Machado | Roberto Klabin | Teresa Bracher



What we do



Public Policies | support the development and execution of legislations for the Pantanal;



Communication and Engagement | create content to promote and engage different sectors towards the sustainable development of the biome



Structuring Wildfire Brigades | promote prevention and quick response against wildfires

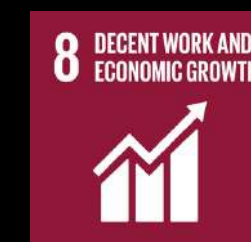


Pantanal Restoration | socioecological restoring of degraded areas in the Pantanal.



Pantanal waters | monitoring and strengthening of Water Governance.

Priority SDGs



How we do it

We are constantly in the field, listening and dialoguing with local actors within the communities, public authorities, tourism operators and rural producers.



Media presence

220 k

Instagram Followers

+ of 1 million

people reached in 2022

360 k

Post interactions in 2022

247

Web/TV/Radio News on 2022

116 k

Visitors on our website in 2022





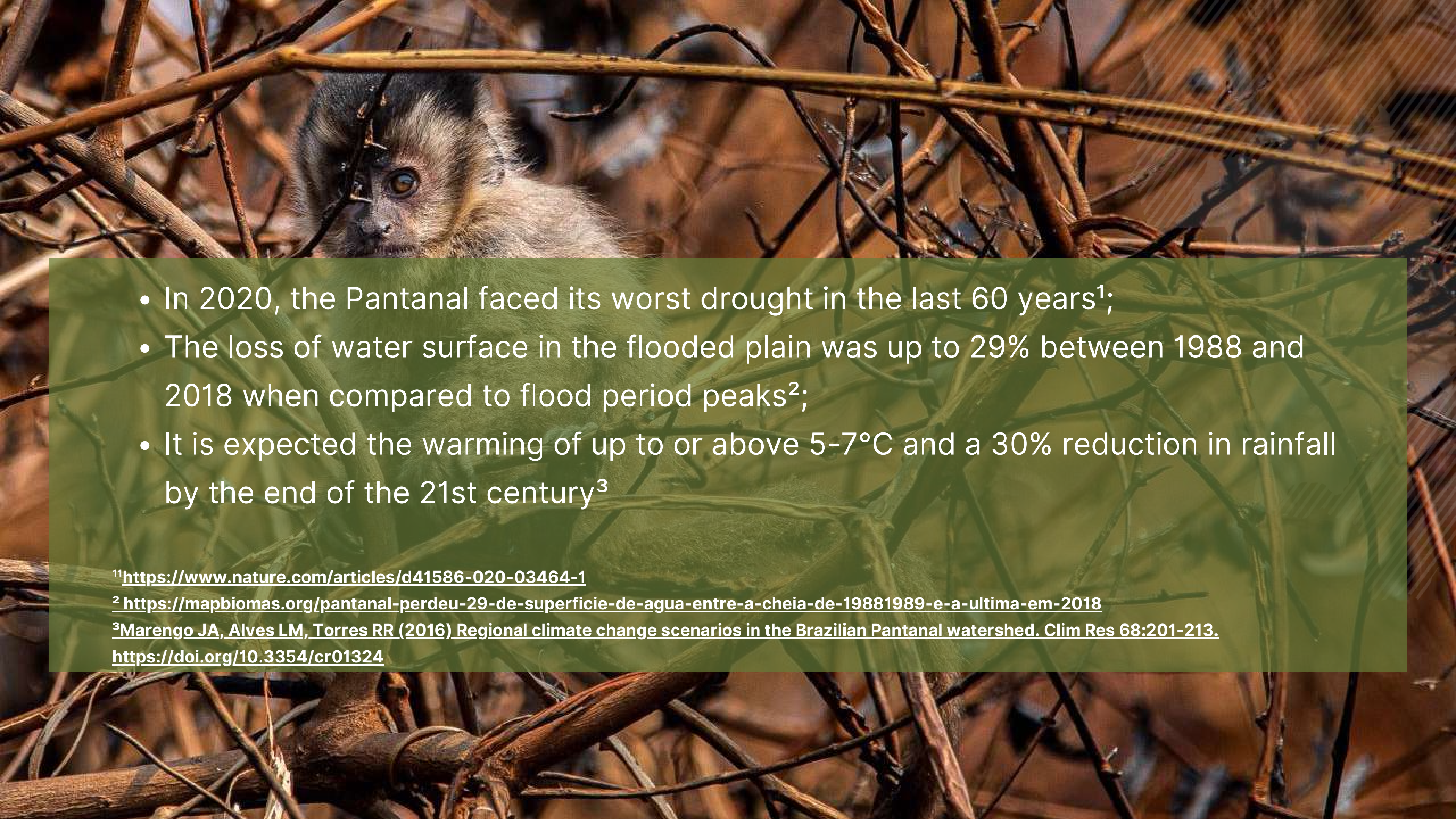
Wildfires in the Pantanal

- In 2020 we witnessed the worst Wildfire in the history of Pantanal, where **26%** of the biome was consumed by the fire¹. More than **17 million** wild vertebrate animals died².
- In Mato Grosso do Sul alone, the financial loss due to wildfires overcame 500 million reais (+100 Million USD)³.¹

¹<https://www.cnnbrasil.com.br/nacional/com-dados-consolidados-2020-e-o-ano-com-mais-queimadas-no-pantanal/>

²<https://www.cnnbrasil.com.br/nacional/incendios-no-pantanal-mataram-quase-17-milhoes-de-animais-vertebrados-em-2020/>

³<https://www.cnnbrasil.com.br/economia/incendios-florestais-no-brasil-causaram-prejuizo-de-r-11-bilhao-em-seis-anos/>

- 
- In 2020, the Pantanal faced its worst drought in the last 60 years¹;
 - The loss of water surface in the flooded plain was up to 29% between 1988 and 2018 when compared to flood period peaks²;
 - It is expected the warming of up to or above 5-7°C and a 30% reduction in rainfall by the end of the 21st century³

¹<https://www.nature.com/articles/d41586-020-03464-1>

² <https://mapbiomas.org/pantanal-perdeu-29-de-superficie-de-agua-entre-a-cheia-de-19881989-e-a-ultima-em-2018>

³Marengo JA, Alves LM, Torres RR (2016) Regional climate change scenarios in the Brazilian Pantanal watershed. *Clim Res* 68:201-213.

<https://doi.org/10.3354/cr01324>

Diagnosis based in 2020 experience

Weaknesses

- Access to detection tools
- Ground monitoring
- Appropriate equipment
- Integration with local and regional agencies

Opportunities

- Almost all communities have previous experience with firefighting
- Great interest from various sectors of society in cooperation





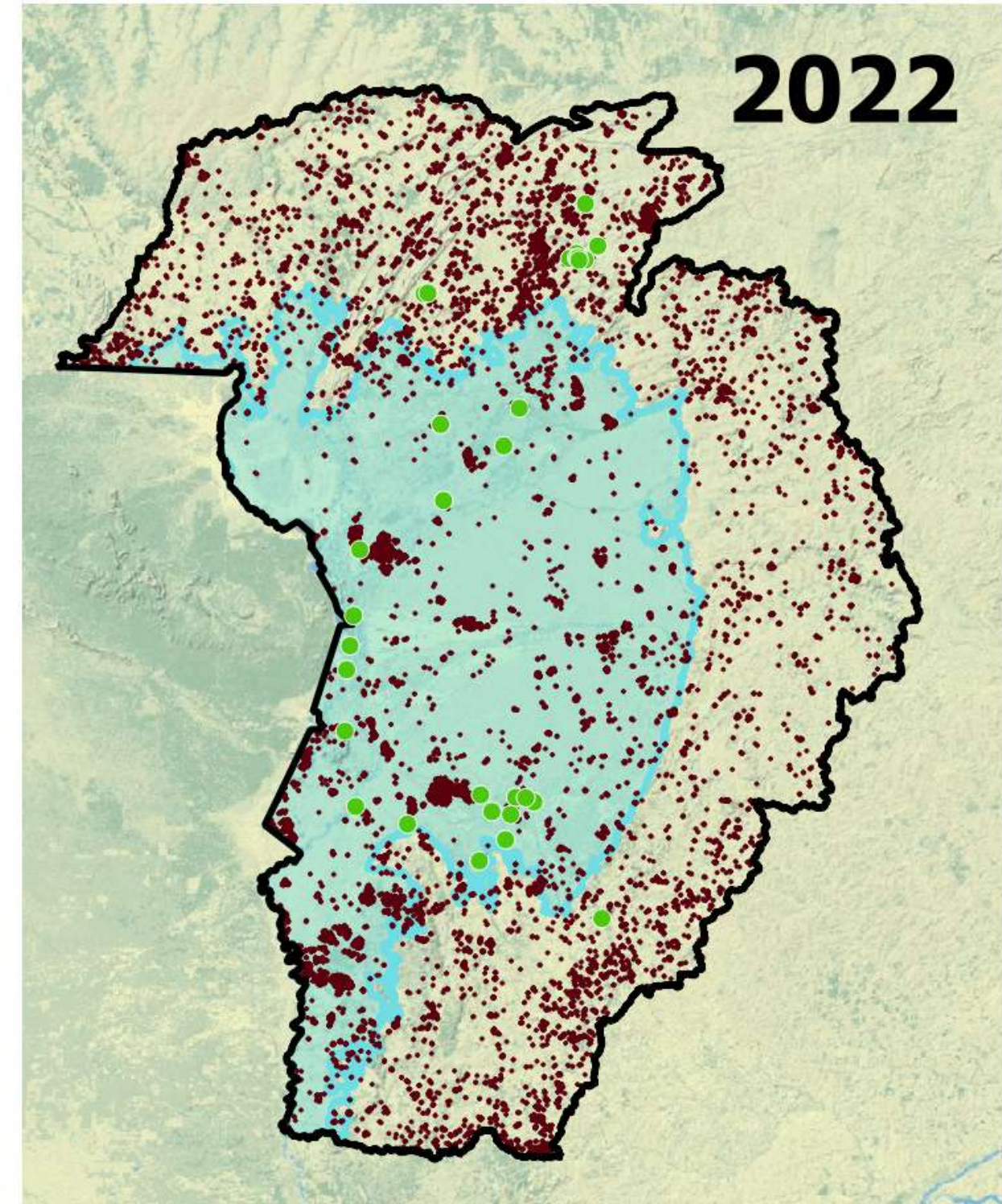
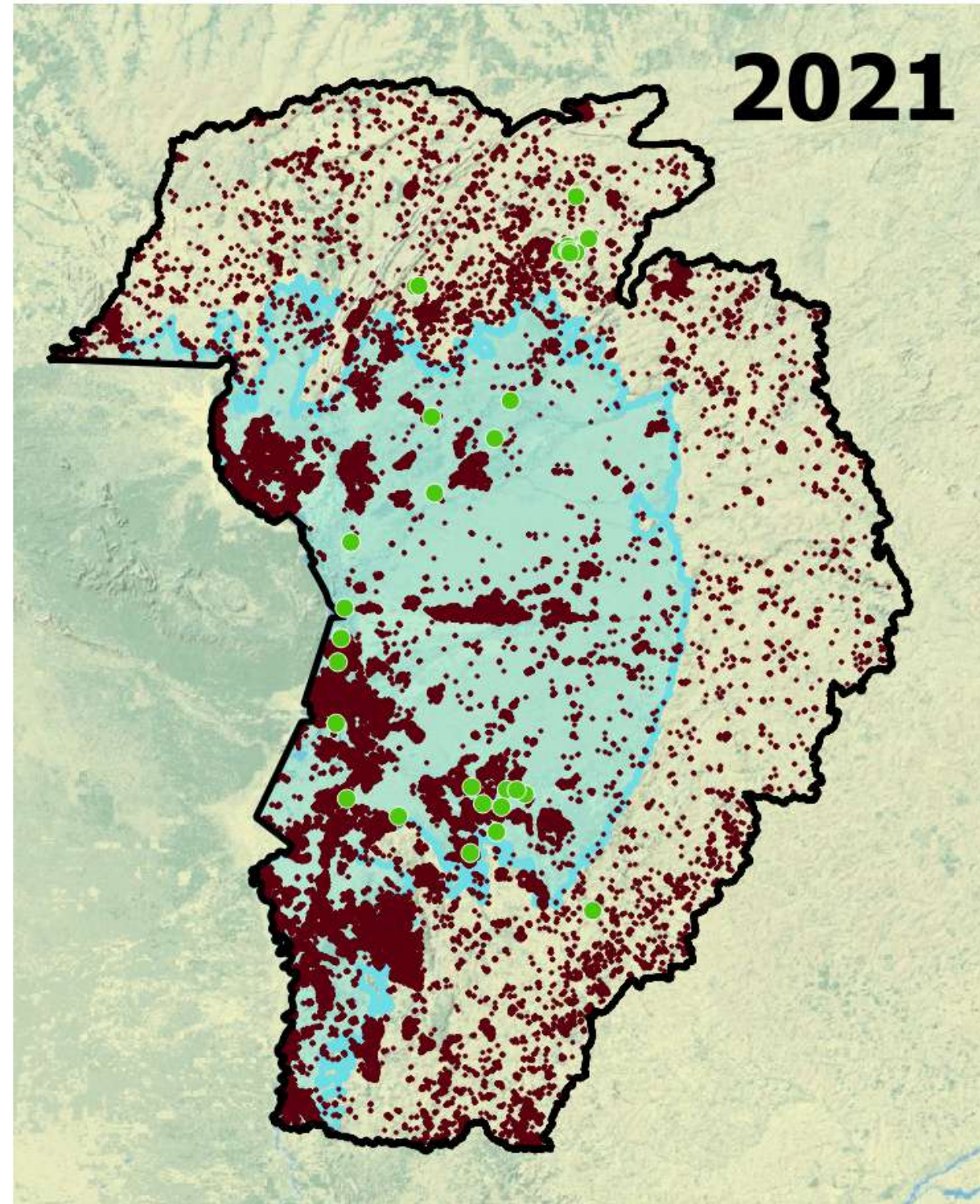
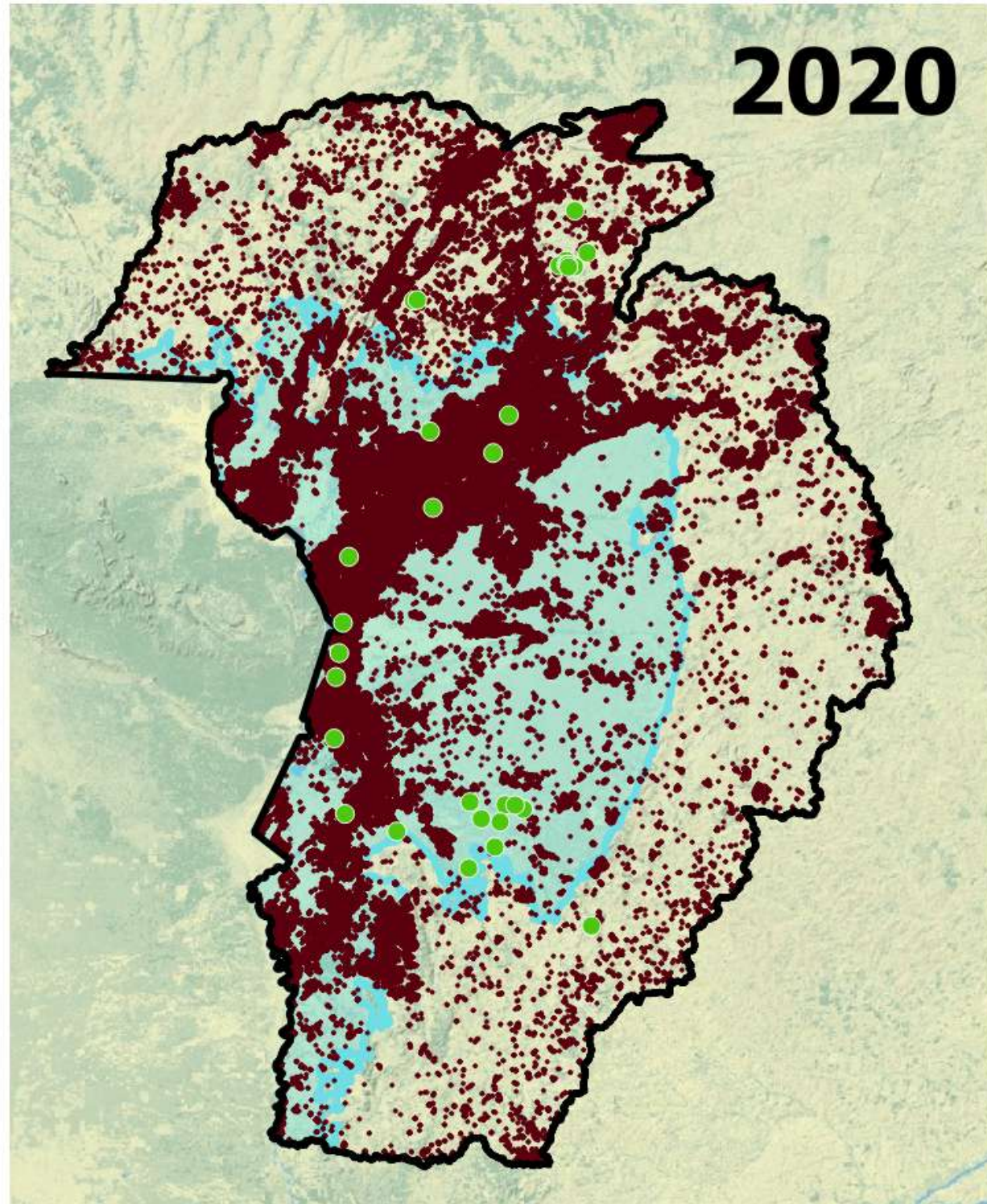
Pantanal Brigades

The program's objective is to prevent wildfires and promote quick response. Farms and communities, including protected areas, are **trained and equipped** to perform logistic and operational functions, generally **integrated** with the **Corpo de Bombeiros, Ibama and ICMBio**. We also support them with remote monitoring, equipment maintenance and preventive actions.



24 brigades	+400 Trained firefighters
4.803 equipment delivered	432 hours of training
12k people benefited	89% reduction of burnt areas
655 k protected hectares, in 7 cities	76% reduction of heat spots

Active Fires 2020-2022



0

200

400 km



BPAN areas



Active fires

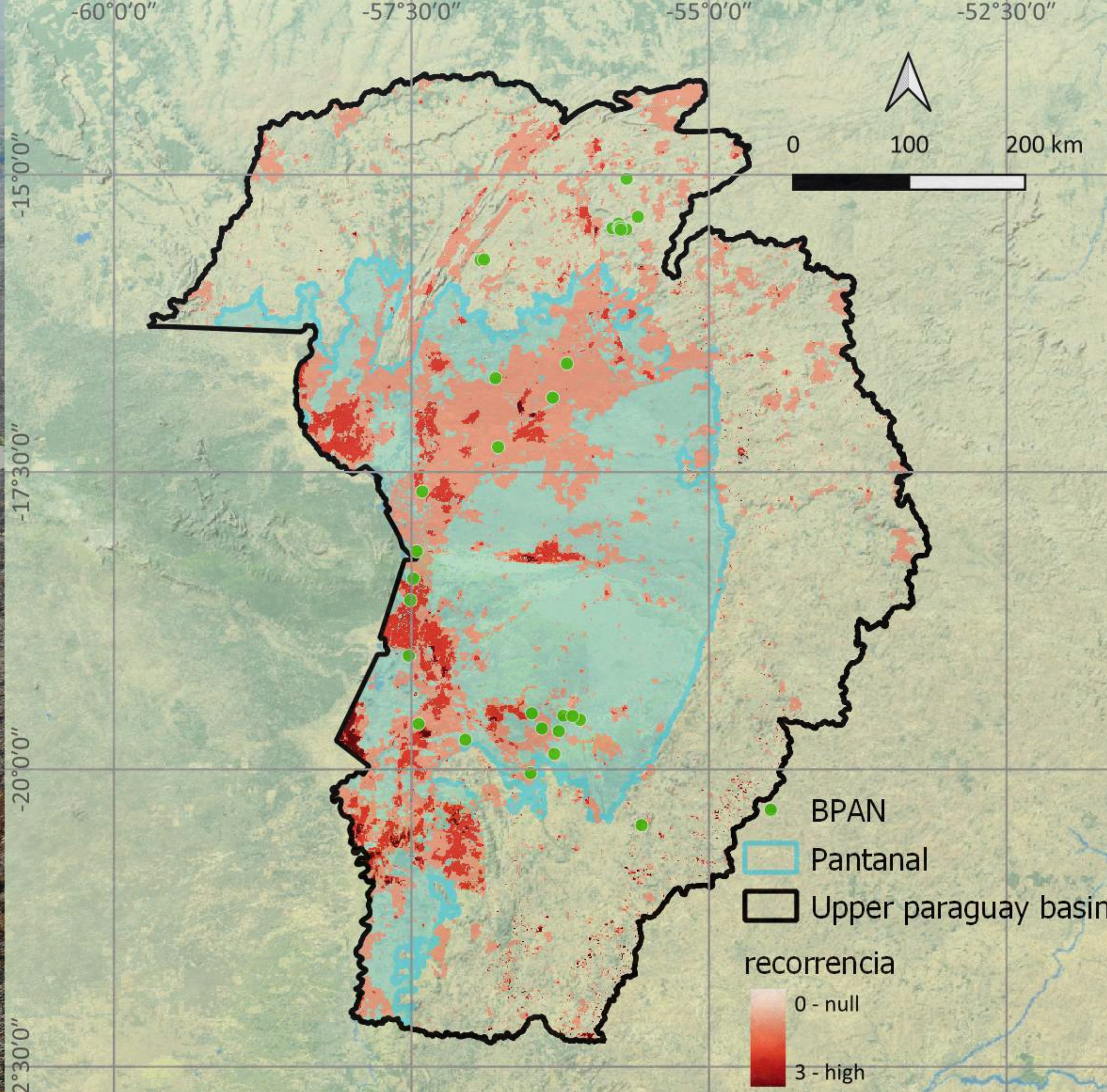
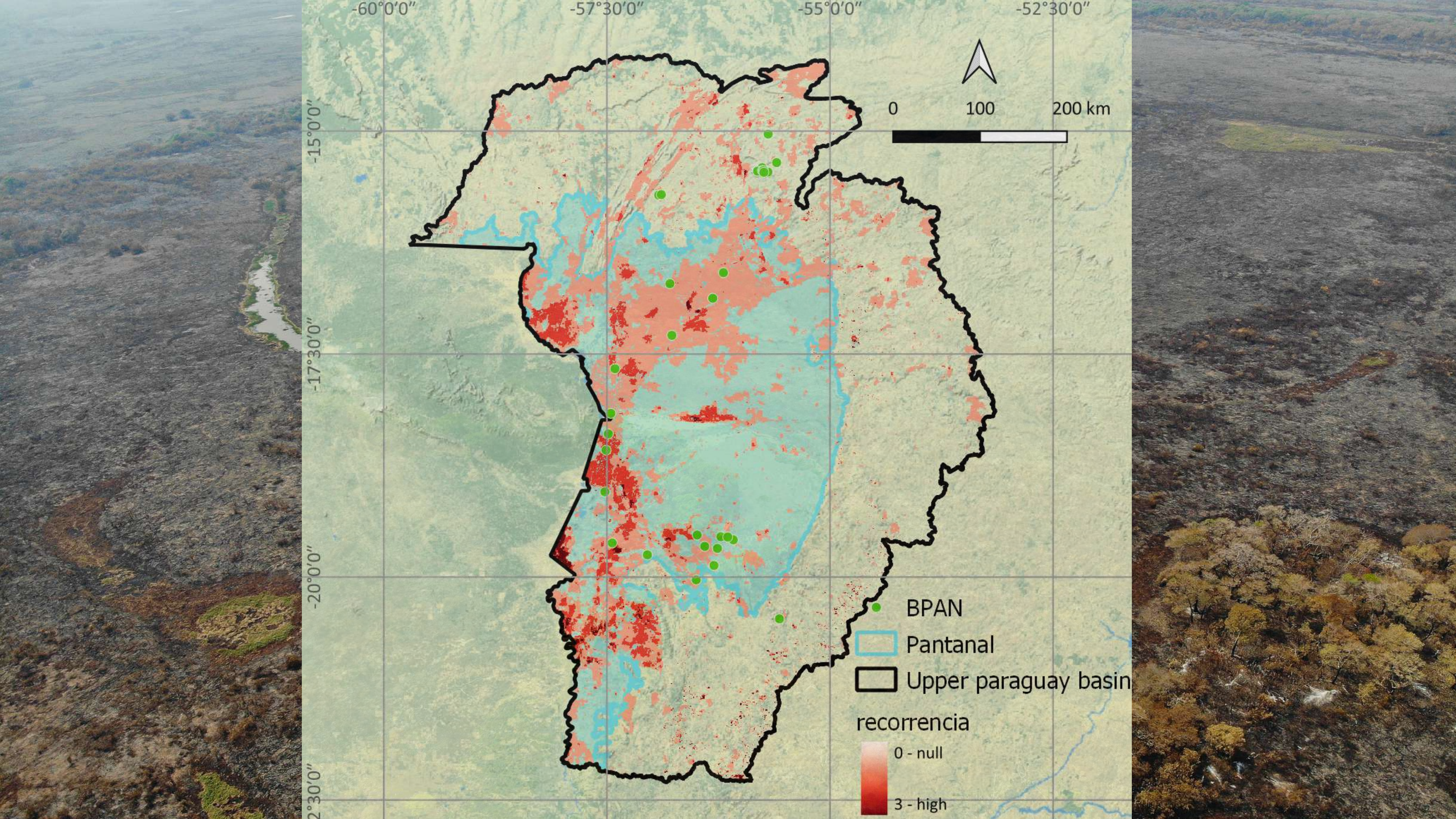


Pantanal



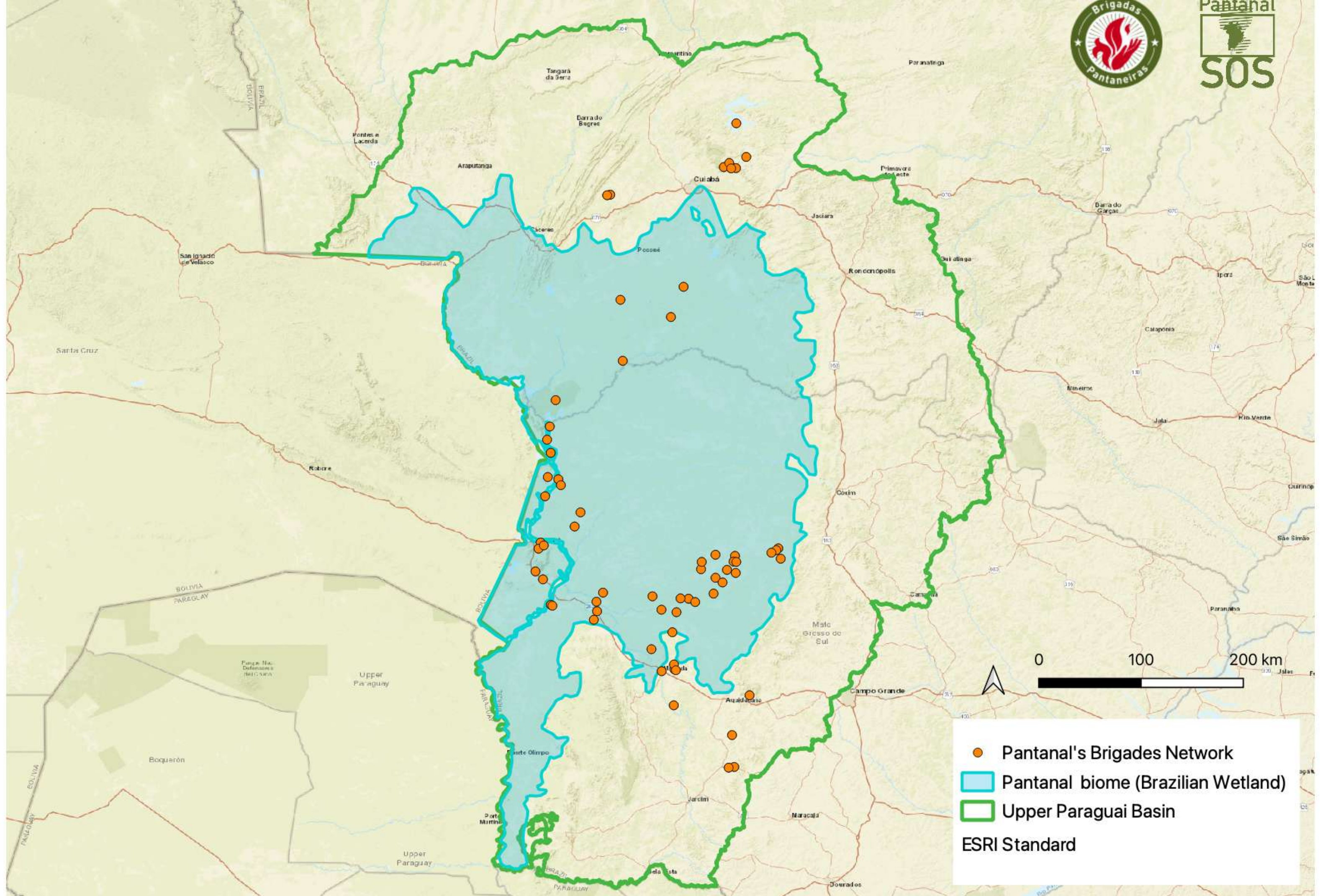
Upper paraguay basin





Next Challenges

- **Scale Up** – advances in integrated fire management legislation – both local and national;
-
- **Scale out** – increase the number of areas and people assisted by brigades and monitoring tools;
-
- **Scale deep** – increase the offer of environmental education and awareness raising experiences.



Our Partners



Documenta Pantanal



NatGeo



Fundação Toyota



Bank of America



Instituto Phi



Azul



Ideias Produções Artísticas



LS Music

Thank you

Leonardo Gomes

Strategy Director

leonardo@sospantanal.org.br

+55 67 999252563

sospantanal.org.br

Instagram: SOS Pantanal

brigadaspantaneiras.sospantanal.org.br