

8TH INTERNATIONAL WILDLAND FIRE CONFERENCE

GOVERNANCE PRINCIPLES:

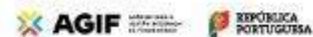
Towards an International
Framework

Porto - Portugal | **May 16-19th**, 2023

FIND OUT MORE
AND REGISTER AT:

www.wildfire2023.pt

LOCAL ORGANIZER



INTERNATIONAL LIAISON COMMITTEE FOR THE IWFC





8TH
INTERNATIONAL
WILDLAND FIRE
CONFERENCE

GOVERNANCE
PRINCIPLES:
Towards an
International
Framework

Monchique's Innovation

Laboratory
A space for dialogue and knowledge sharing to foster
community-based disaster risk reduction in forest-prone

areas
Marta Partidário, Joana Dias, Guilherme Saad, Ana Soares, Isabel Loupa Ramos, Rute Martins, Margarida Monteiro



INTRODUCTION

PROJECT: Bridging science and local communities for forest risk reduction (BRIDGE)



CONSORTIUM: Instituto Superior Técnico (IST),
Laboratório Nacional de Engenharia Civil (LNEC)
Universidade do Algarve (UALg)

DURATION: 28 months (15.03.2021 to 14.07.2023)

FUNDING: Fundação para a Ciência e Tecnologia (FCT) in in the framework of project UIDB/05703/2020 from the research unit CiTUA

INTRODUCTION

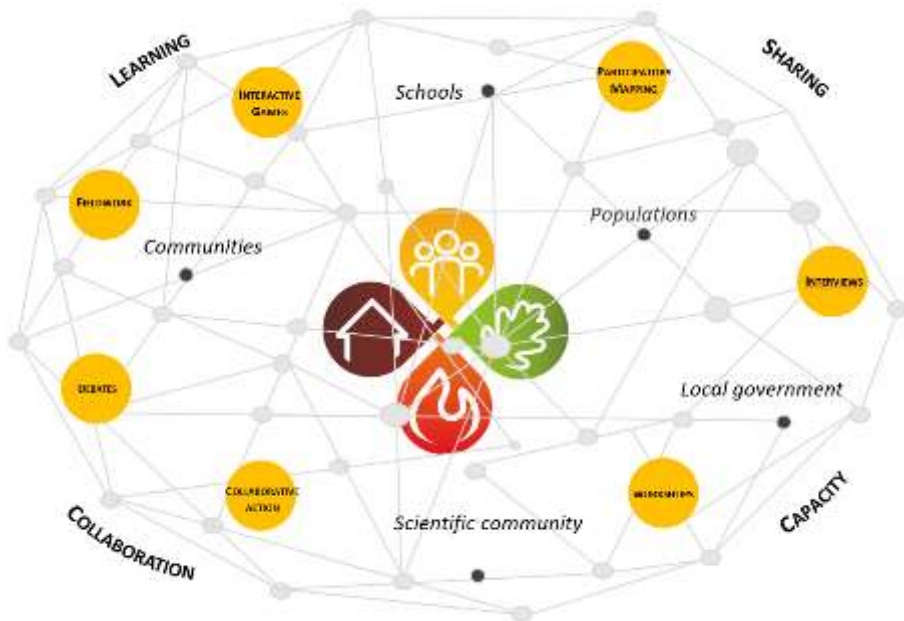
AIM Interconnect and integrate local and scientific knowledge, encourage local, collective and preventive agencies, and strengthen adaptive capacity for forest fire risk reduction strategies using a CBDRR perspective

WHERE?

In Monchique

HOW?

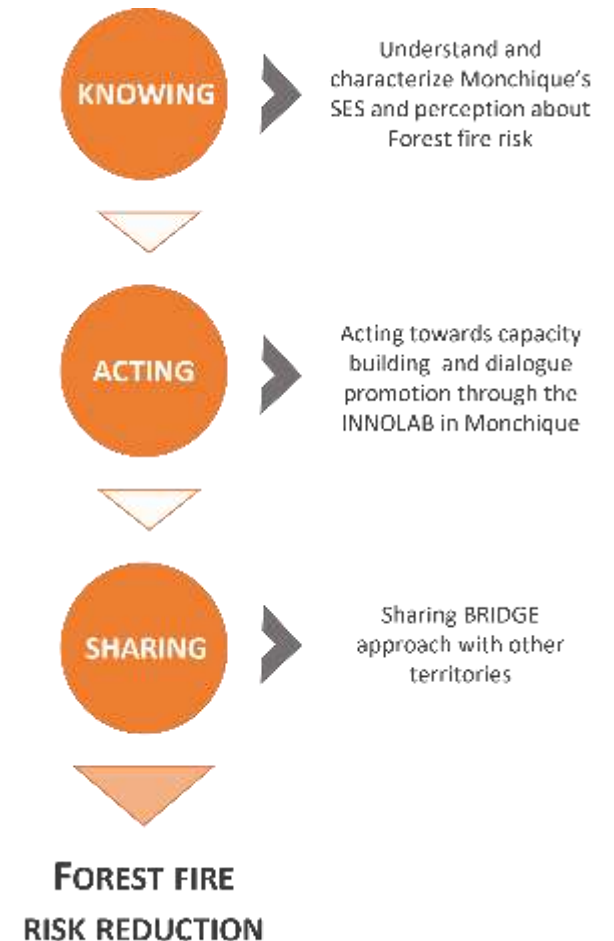
Creating an Innovation Laboratory (INNOLab)



BRIDGE INNOLAB

A collective space to promote dialogue, knowledge sharing and collective debate in the Monchique territory

- ❖ Promote social learning on key aspects of local vulnerabilities and forest fire risks
- ❖ Strengthen collaborative networks
- ❖ Build and enhance social and institutional adaptive capacities for forest fire risk reduction
- ❖ Foster a CBDRR participatory process approach



BRIDGE INNOLAB – Activities realized within the participatory process

PARTICIPATORY MAPPING



April 2022

March 2022

TREE



SOCIAL NETWORK ANALYSIS



May and June 2022

VISIONING



May 2022

PRIORITIES



January 2023



TREE DAY



February 2023

FUNCTIONS AND RESPONSIBILITIES



March 2023

STRATEGIES FOR ACTION



April 2023

BRIDGE INNOLAB – Tree Day

2022

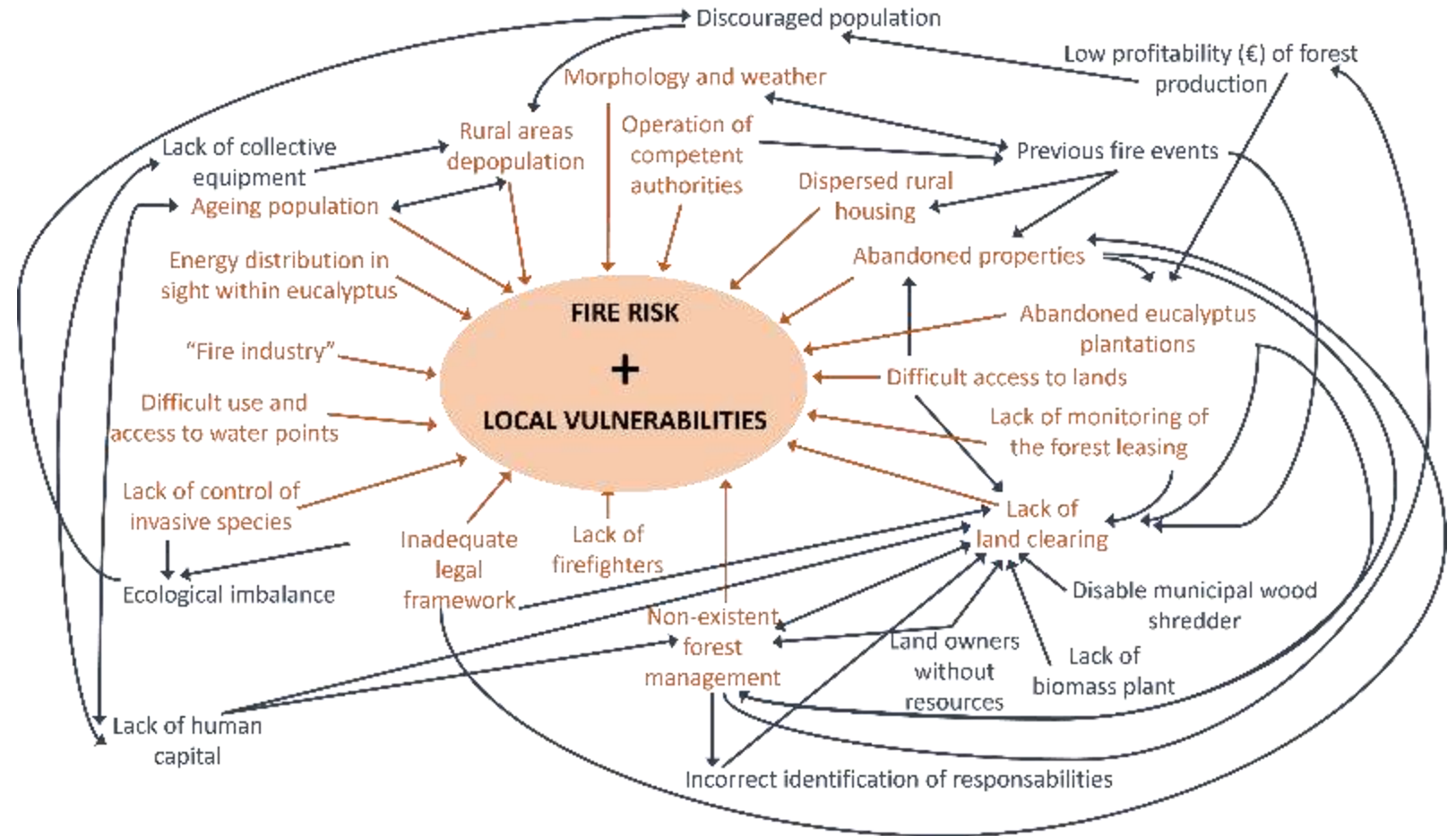


2023



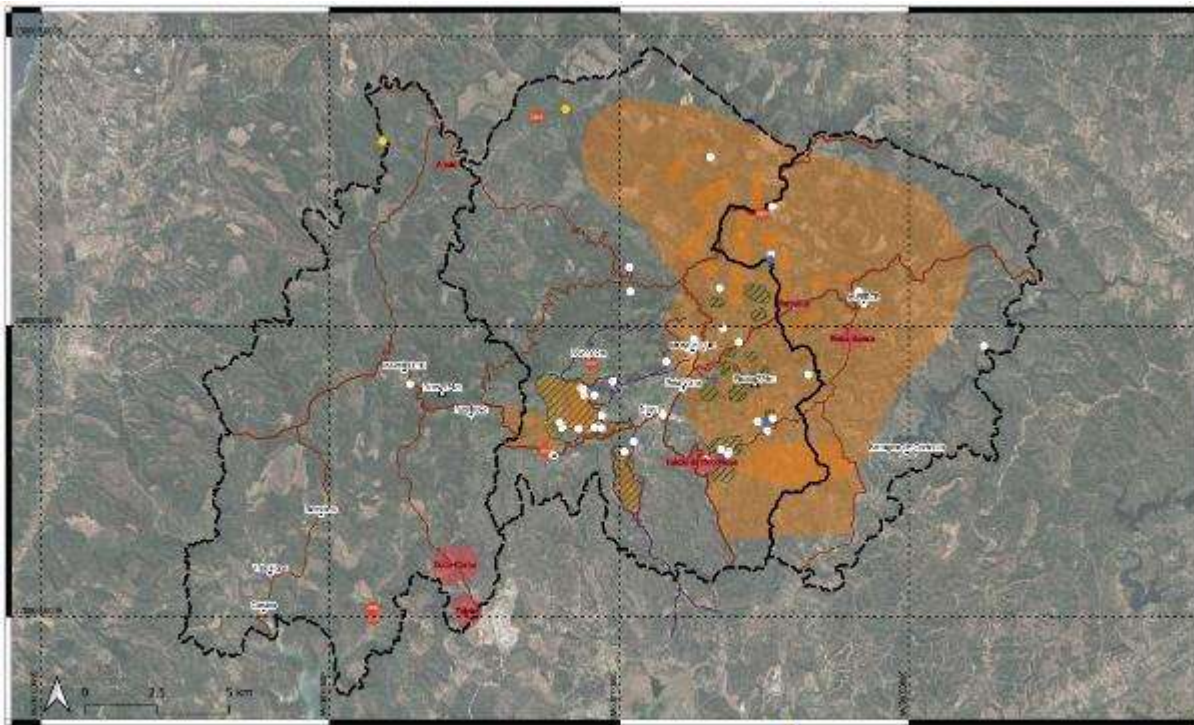
BRIDGE INNOLAB – Participatory Mapping

1. Fire risk and local vulnerabilities factors



BRIDGE INNOLAB – Participatory Mapping

2. Spatialized map



- Legend
- Points of ignition of the latest fires
 - Location of properties
 - Location of debilitated persons
 - High-voltage power line hotspots
 - ▲ Peaks
 - Areas susceptible to fires
 - Highlighted risk villages
 - Highlighted forest areas
 - Most commonly used local routes
 - Road network
 - Limit Parishes

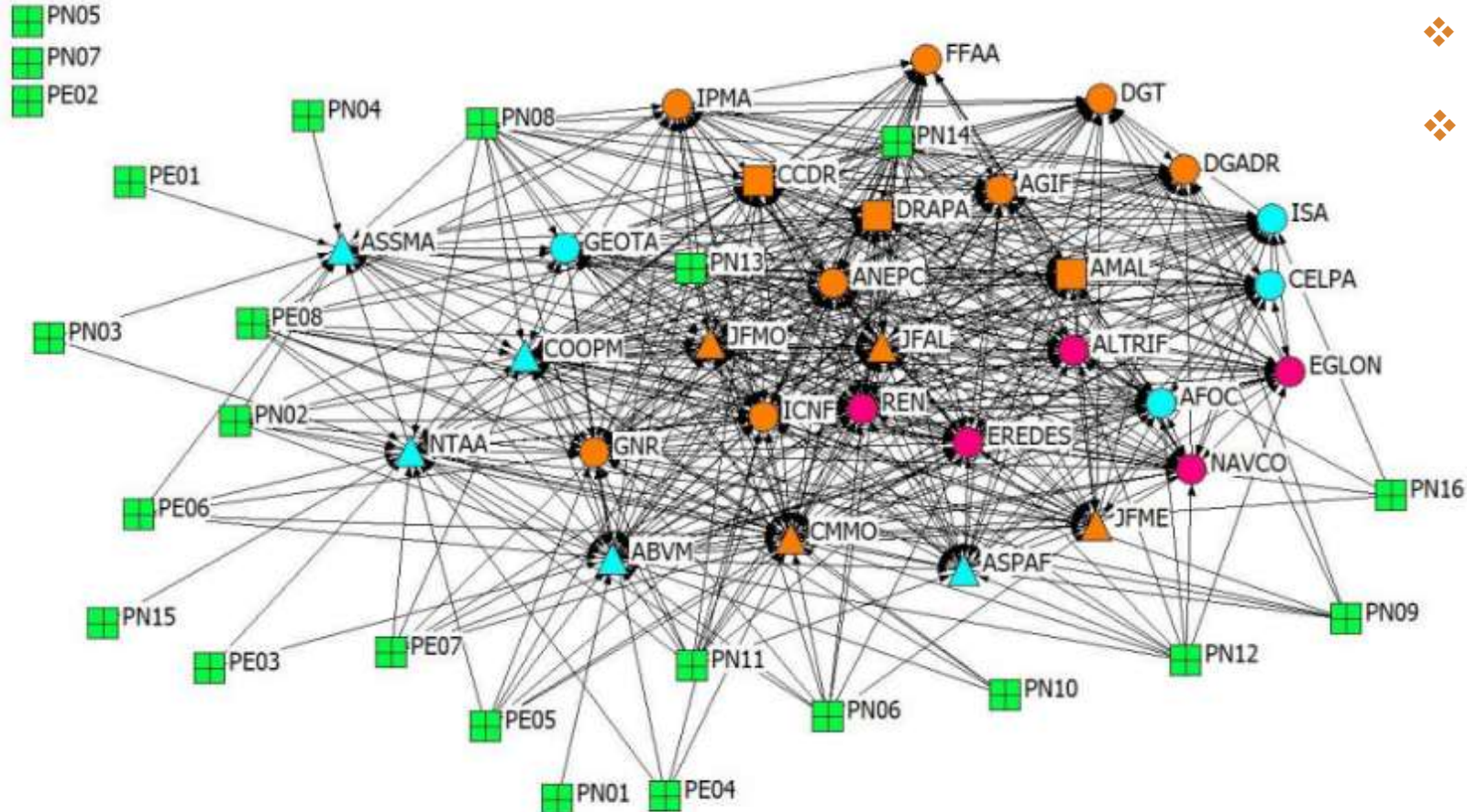


3. Possible measures to

implement

- ❖ In-depth study of forest properties – evaluate conditions and capacity to fuel management
- ❖ Assess the current conditions of water points and reservoirs
- ❖ Install forest fire monitoring posts at strategic locations
- ❖ Require forestry companies to provide a detailed plan for land recovery after forestry production
- ❖ Build a biomass plant in Monchique
- ❖ Create a firefighting certificate addressed

BRIDGE INNOLAB – Social Network Analysis



- ❖ 29 SGIFR entities (RCM 45-A/2020)
- ❖ 226 rural landowners in Monchique (INE, 2019)

- National
- Regional
- △ Local
- State / Public agencies
- Third sector / Associations
- Private sector / Companies
- Landowner

BRIDGE INNOLAB – Visioning

Fire resilience, a healthy and sustainable village, a territory that is more ordered and resilient territory, with integrated management

Population, dynamic and more populated society, with social valorization and education linked to the forest and industries

Better **accessibility networks and infrastructure**, without motorized vehicles and gas stations



Biodiverse agro-forestry mosaic, with protection and production zones in harmony, less fragmented landscape that remunerates ecosystem services

Economic dynamics, greater number and diversification of companies, independence from financial subsidies and tourism focused on nature and custom

BRIDGE INNOLAB – Capacities

Existent

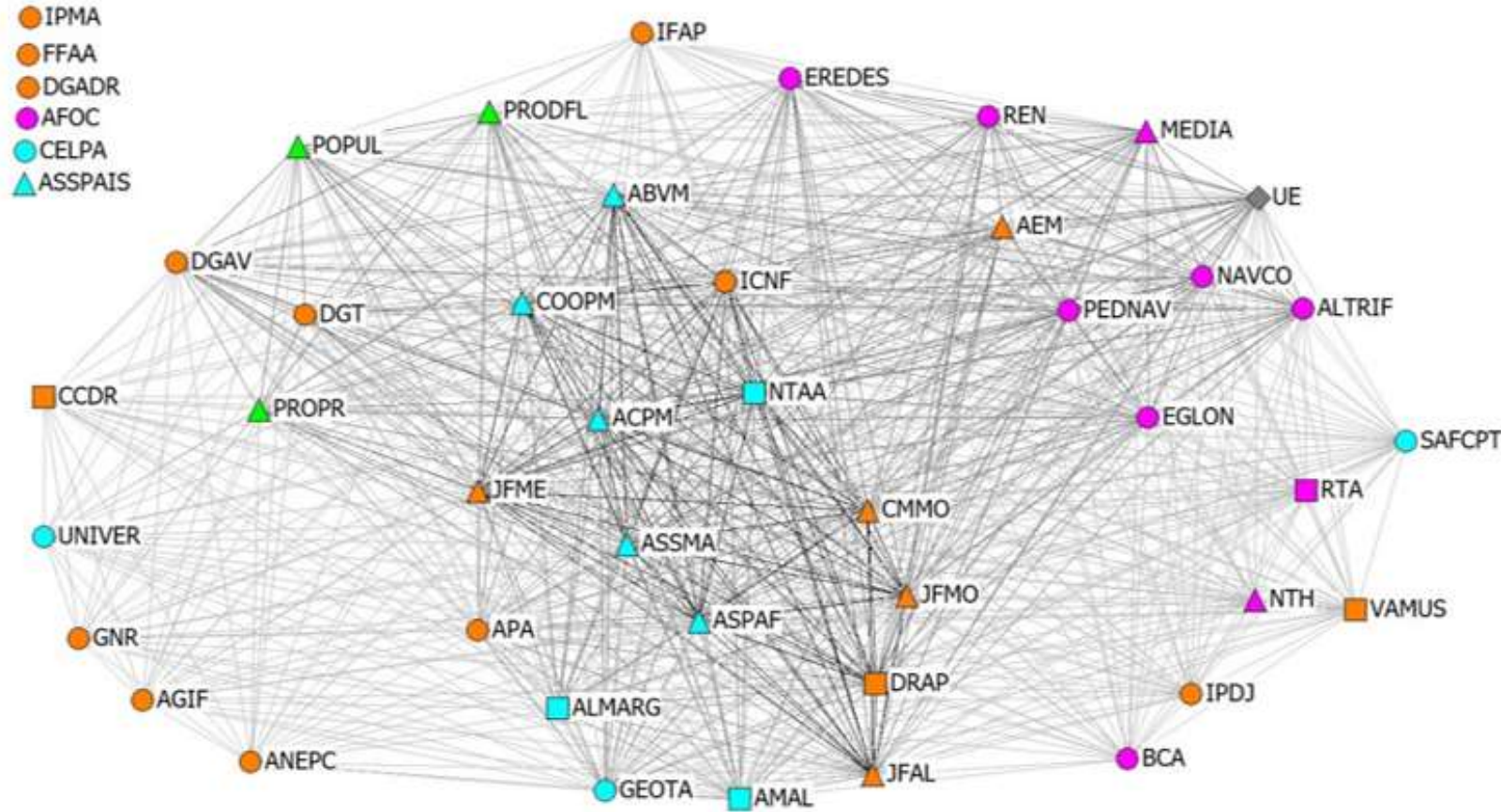
- ❖ Shared vision
- ❖ Human resources
- ❖ Know-how
- ❖ Local products (honey, *medronho*) and partnerships
- ❖ Attractive territory and landscape
- ❖ Young population network

Needed

- ❖ Better communication skills
- ❖ Leadership
- ❖ Funding / financial benefits
- ❖ Human resources
- ❖ Trust between local actors
- ❖ Cooperation between neighbours
- ❖ Innovation-driven mentality
- ❖ Agricultural and forest interest



BRIDGE INNOLAB – Functions and Responsibilities



ACHIEVEMENTS THIS FAR

Outcomes

- ❖ Increase participation of Monchique's community
- ❖ Blended community and scientific knowledge
- ❖ Local actors discussing and exchanging experiences on Monchique's fire risk reduction
- ❖ Raised awareness on the community active role on reducing wildfire risk
- ❖ Strengthen local adaptive capacities towards their territory fire risk reduction
- ❖ CBDRR roadmap applicable to other territories with similar contexts

Challenges

- ❖ Lack of community participation
- ❖ Lack of trust in participatory processes
- ❖ Low interaction between landowners
- ❖ Cultural and language differences (PT x EN)
- ❖ Strong fire events experience (sensibility and trauma)
- ❖ Top-down perspective
- ❖ Blaming the "others" posture

NEXT STEPS

- ❖ Action plan for forest fire risk reduction to be implemented in Monchique
- ❖ INNOLAB CBDRR methodology guide that can be applied to other territories with similar contexts
- ❖ Sharing of BRIDGE INNOLAB outcomes through the:
 - ❖ Scientific community;
 - ❖ Political decision makers and
 - ❖ Society.

THANK



 <https://bridgecomunidade.pt>

 +351 218 418 325

 info@bridgecomunidade.pt

 @BRIDGE2021_2023

 @bridge_21_23