



8TH
INTERNATIONAL
WILDLAND FIRE
CONFERENCE

GOVERNANCE
PRINCIPLES:
Towards an
International
Framework

Community based fire management

Latin American Model Forest Network
Natalia Ruiz-Guevara



Contents



Case studies

1

The IMFN and the LAMFN

2

Participation: Who?

3

Synergies and networking: How?

4

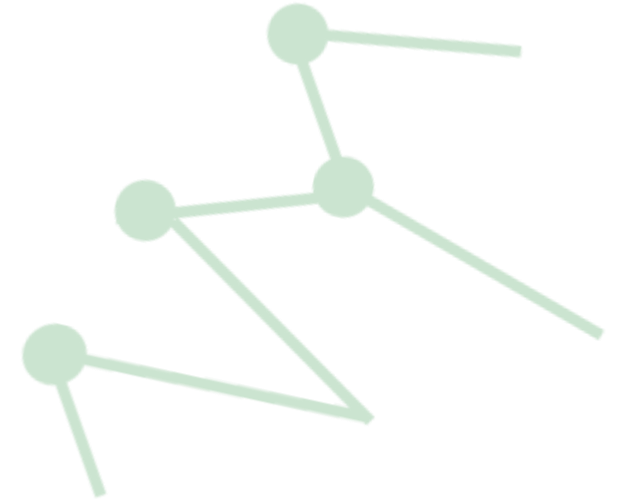
Finance: Which one?

5

Links with restoration: What's next?



8TH
INTERNATIONAL
WILDLAND FIRE
CONFERENCE



What's a Model Forest?

Network of networks



8TH
INTERNATIONAL
WILDLAND FIRE
CONFERENCE

A Model Forest is as a process for bringing a diverse partnership of individuals and groups together to realize a common vision of sustainable development in a large landscape. Six principles of work.

IMFN (2022)



Images: D. Coimbra (MF Chiquitanía Sostenible), Inty Arcos, Programa Bosques Andinos, RLABM

International Model Forest Network

Network of networks



8TH
INTERNATIONAL
WILDLAND FIRE
CONFERENCE

International Model Forest Network (IMFN) Members

Este mapa se hizo con Google My Maps. [Cómo crear uno propio.](#)



Latin American Model Forest Network

Network of networks

- 15 countries
- 35 territories
- 20 years
- Based in exchange of experience and networking
- Follow us!



8TH
INTERNATIONAL
WILDLAND FIRE
CONFERENCE





8TH
INTERNATIONAL
WILDLAND FIRE
CONFERENCE

We met to talk about fire

MF Chorotege, Costa Rica (September 2022)



Images: RLABM

Who should manage fire?

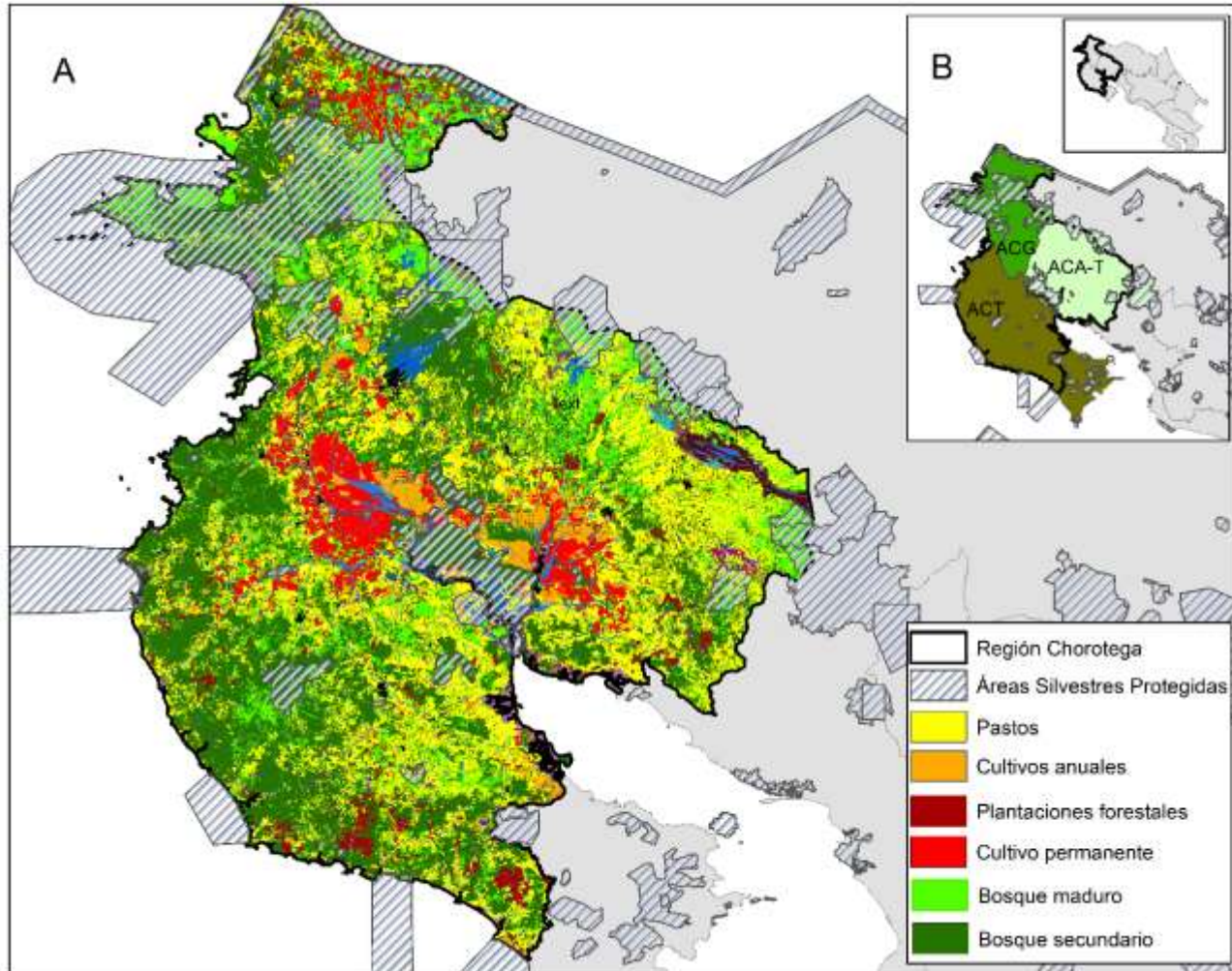
Stakeholders mapping

Multiple:

- ✓ ***Identities***
- ✓ ***Roles***
- ✓ ***Rules***
- ✓ ***Functions***
- ✓ ***Forms of organization***



Case study: MF Chorotega



- ✓ *Livestock*
- ✓ *Sugar cane*
- ✓ *Forest*
- ✓ *Restored forest*

***Dry season:
Fires***

MF Chorotega's Stakeholders Map

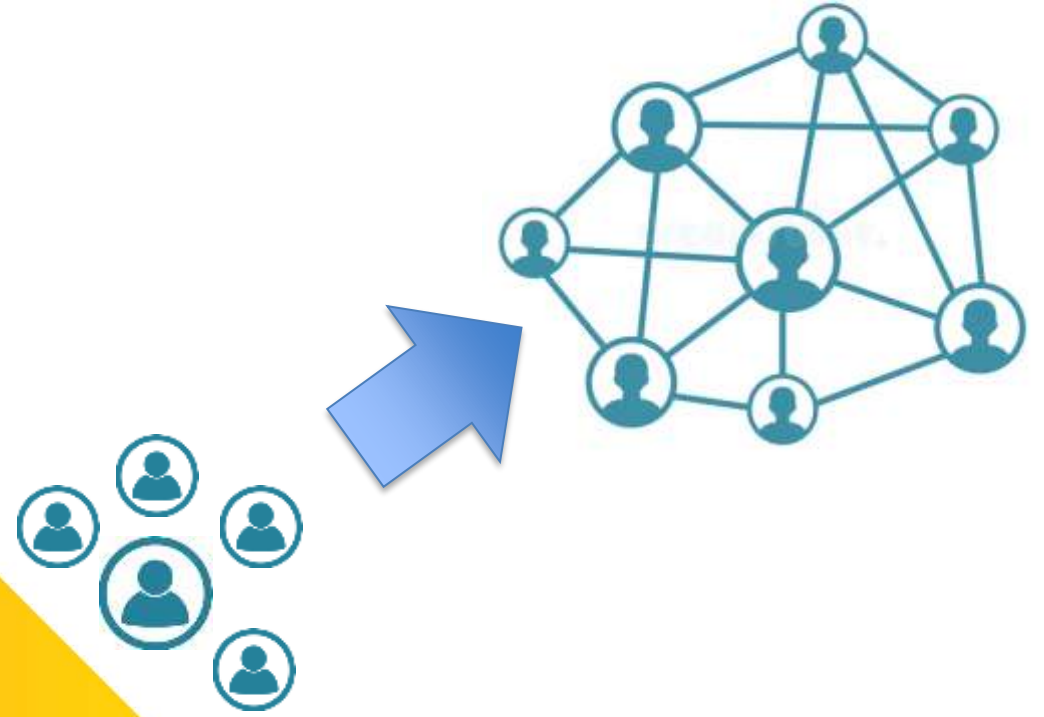


Identify stakeholders is a permanent process

- ✓ *Sensibilization and education*
- ✓ *Advocacy*
- ✓ *Dialogue*
- ✓ *Research*
- ✓ *“Fire Smart” production models*



*How to evolve
from a
stakeholders
mapping to a
Network of
synergies?*



Bringing different positions to the table

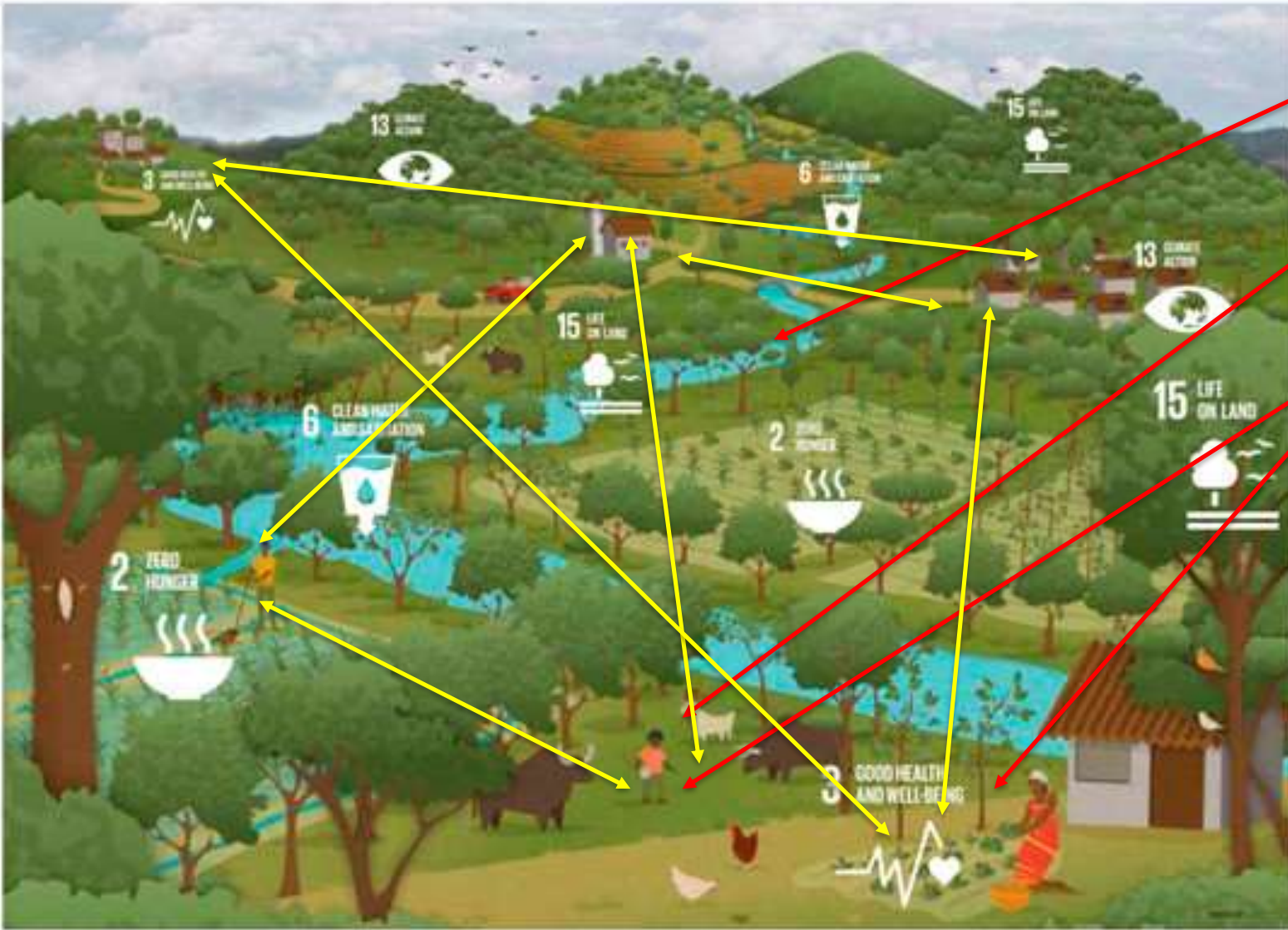
- ✓ *Interinstitutional platforms of governance*
- ✓ *Norms*
- ✓ *Inclusion of multiple sectors*
- ✓ *Agreed agendas*



Source: 1000 Landscapesx1BillionPeople



Images: PLAPM



Common interests

Livelihoods and roles

Inclusion of diversity

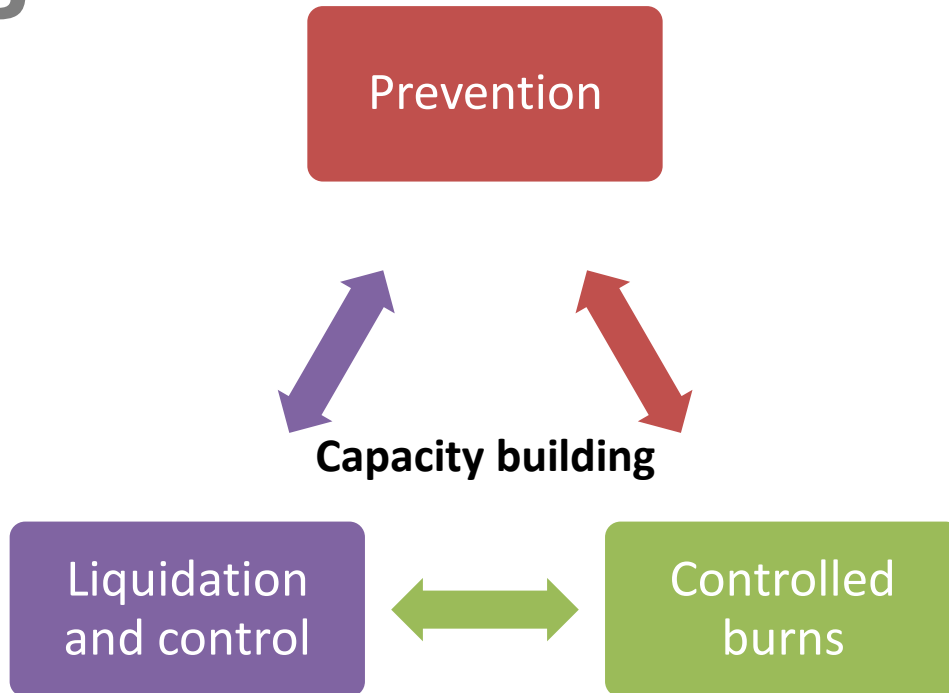
Effective communication

Local leadership

Transparency and legitimacy

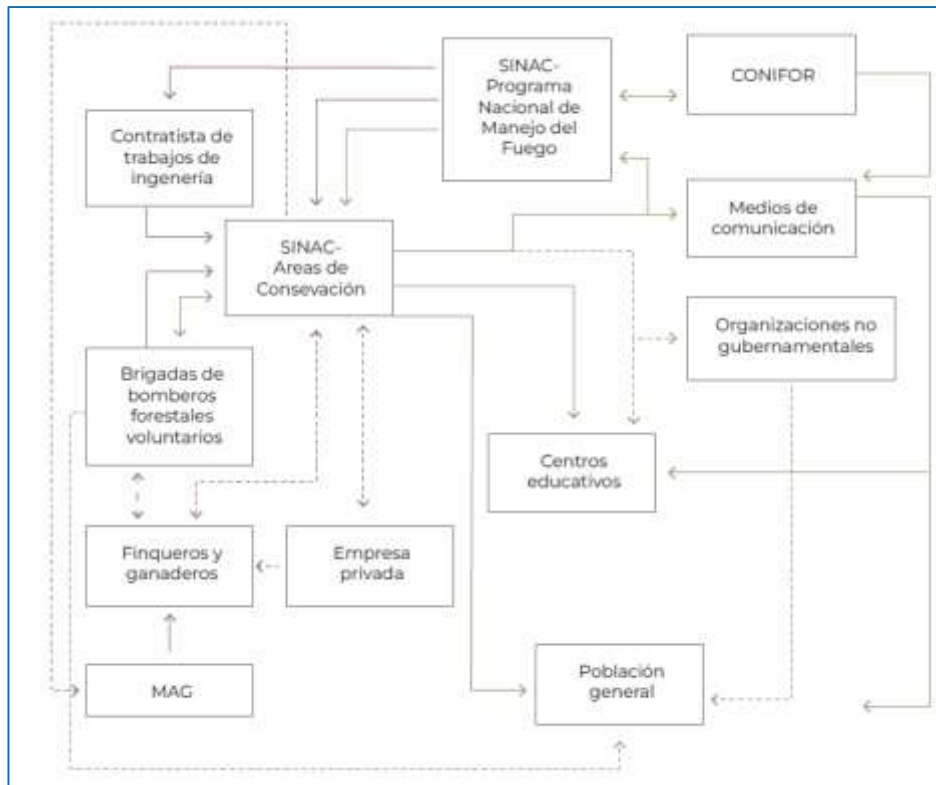
Image source: Thaxton et al., 2015.

MF Chorotega's agreed agenda

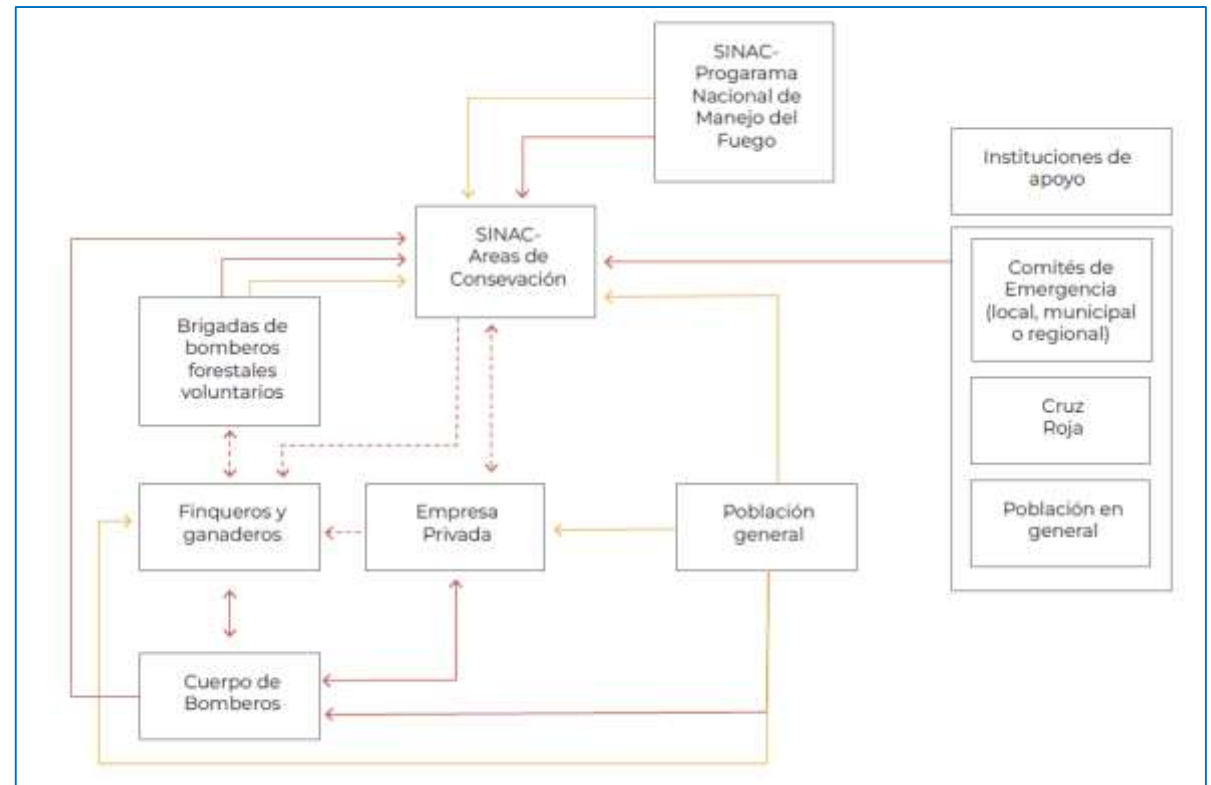


MF Chorotega's network

Prevention (on the field and education)



Detection and combat

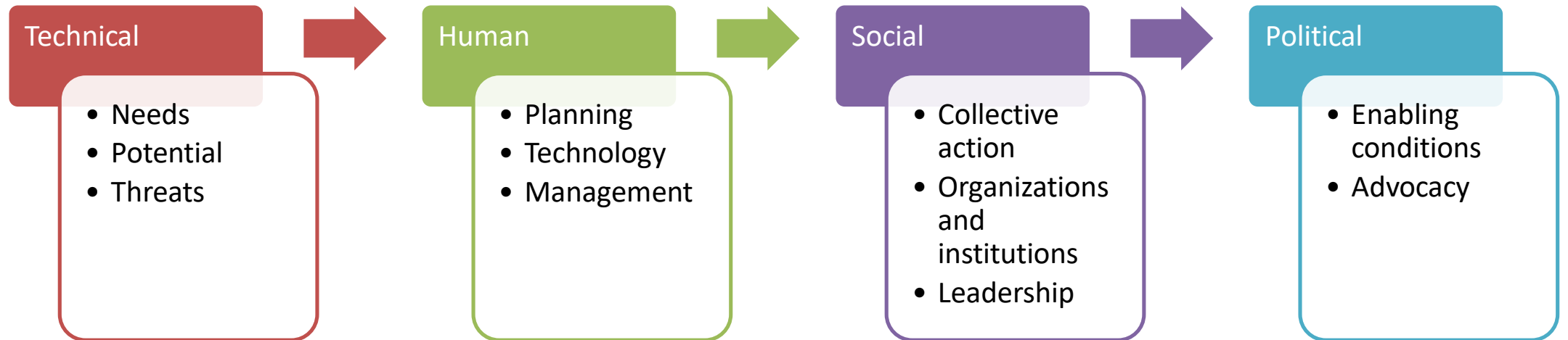


Effective communication

*Finance or
incentives?*

*Which finance
sources are
needed?*

Same logic than landscape management: COMPLEX



Estrategies over Sources

An universe of sources



REDD+




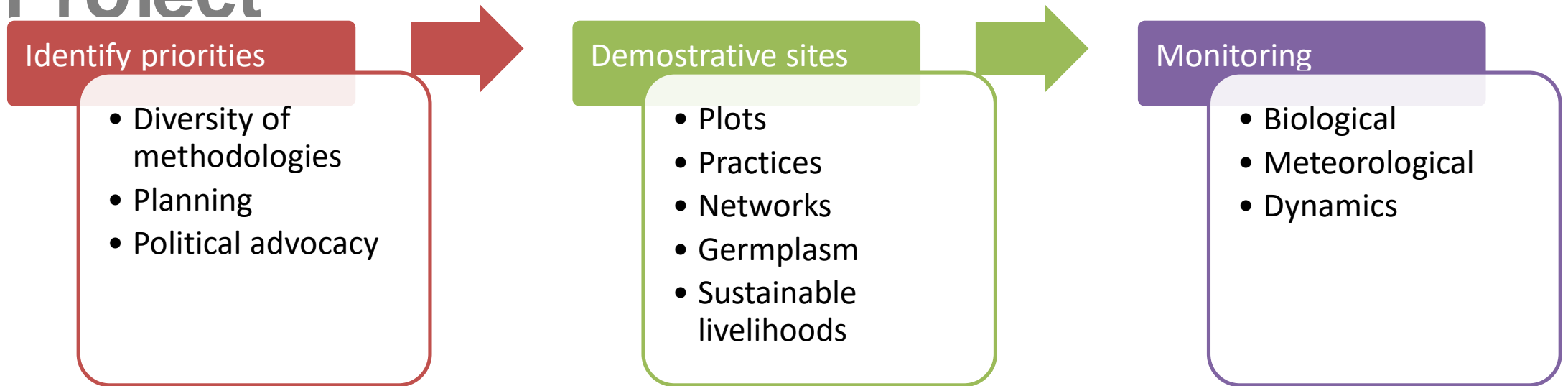


8TH
INTERNATIONAL
WILDLAND FIRE
CONFERENCE

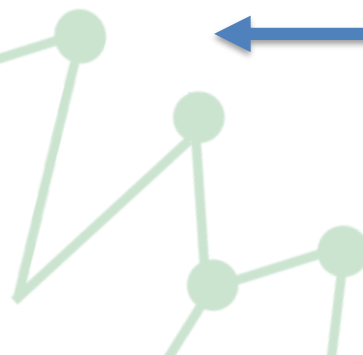
What's next?

Restoring burnt areas

Lessons learn't from RetaurACCIÓN Project



Governance, knowledge management, capacity building, research, participation, inclusión, technologies, wellbeing, fundraising ...





Images: RLABM, BM Chiquitanía Sostenible, BM Huayabamba Abiseo, BM Hileia Bahiana, BM Chocó Andino



Thank you