



EUROPEAN CONFERENCE ON QUALITY IN OFFICIAL STATISTICS 2024 ESTORIL - PORTUGAL





EUROPEAN CONFERENCE ON
QUALITY IN OFFICIAL STATISTICS
2024 ESTORIL - PORTUGAL

Use of satellite imagery and deep learning algorithms for population census in the overseas departments

Clément Guillo, French national Institute of Statistics (INSEE)



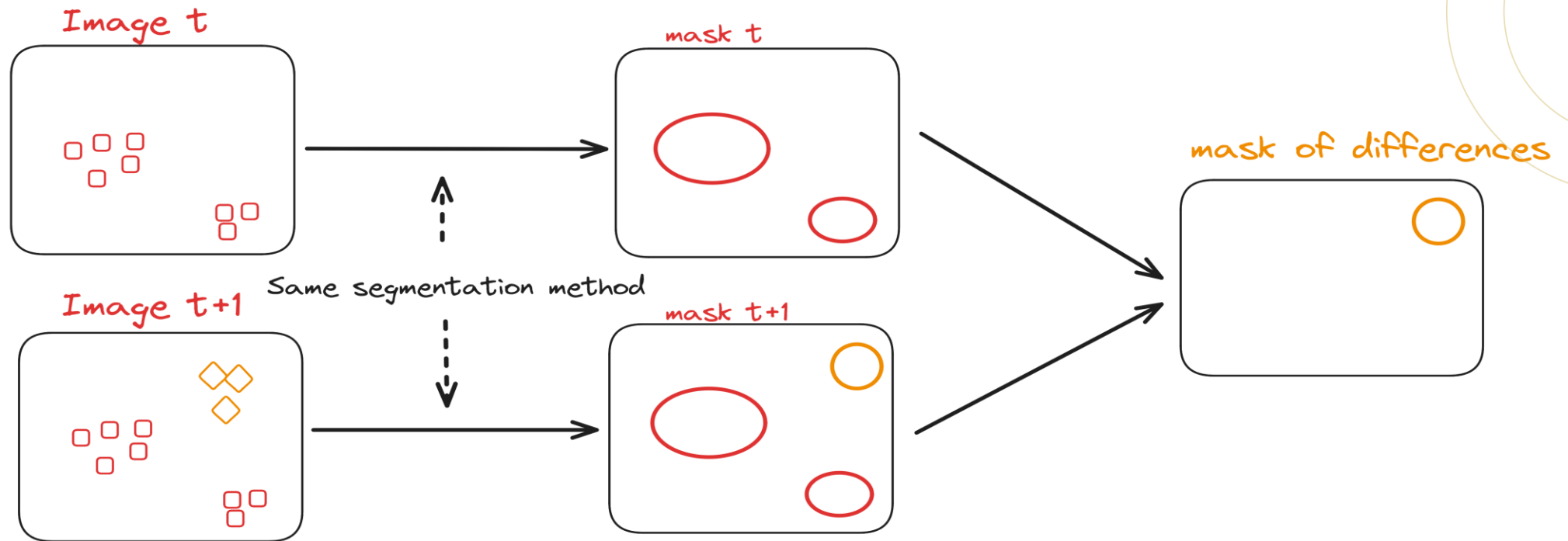
eurostat 

The conference is partly
financed by the European Union



Two **use cases** we want to address:

- **Credibility** of INSEE figures in overseas departments. French Guiana: M.P. Pastor believes INSEE underestimates the population size.
- Comprehensive **census** in Mayotte in 2014 was very costly, leading to a switch to a sample-based estimated census. The first results will be released in December 2025.

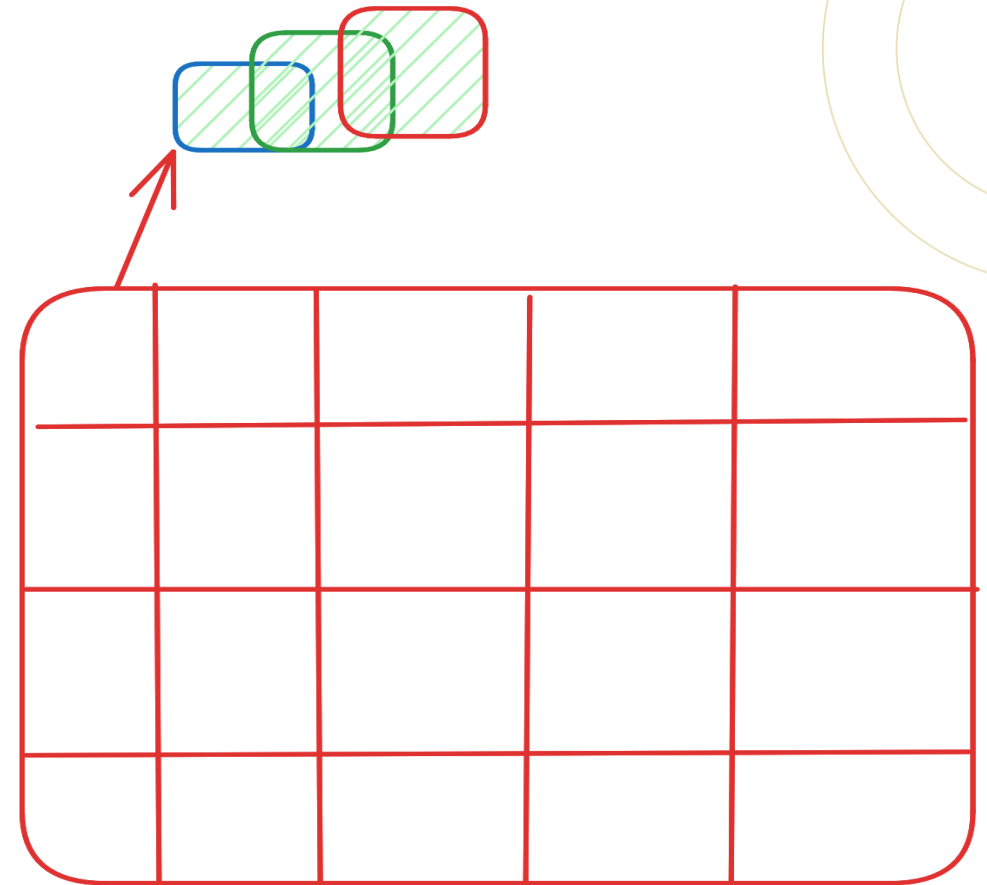


Segmentation strategy



Images

- **Spatial resolution:** equivalence between pixel and surface.
-
- **Temporal resolution:** how many pictures of the same territory you can obtain in one month?





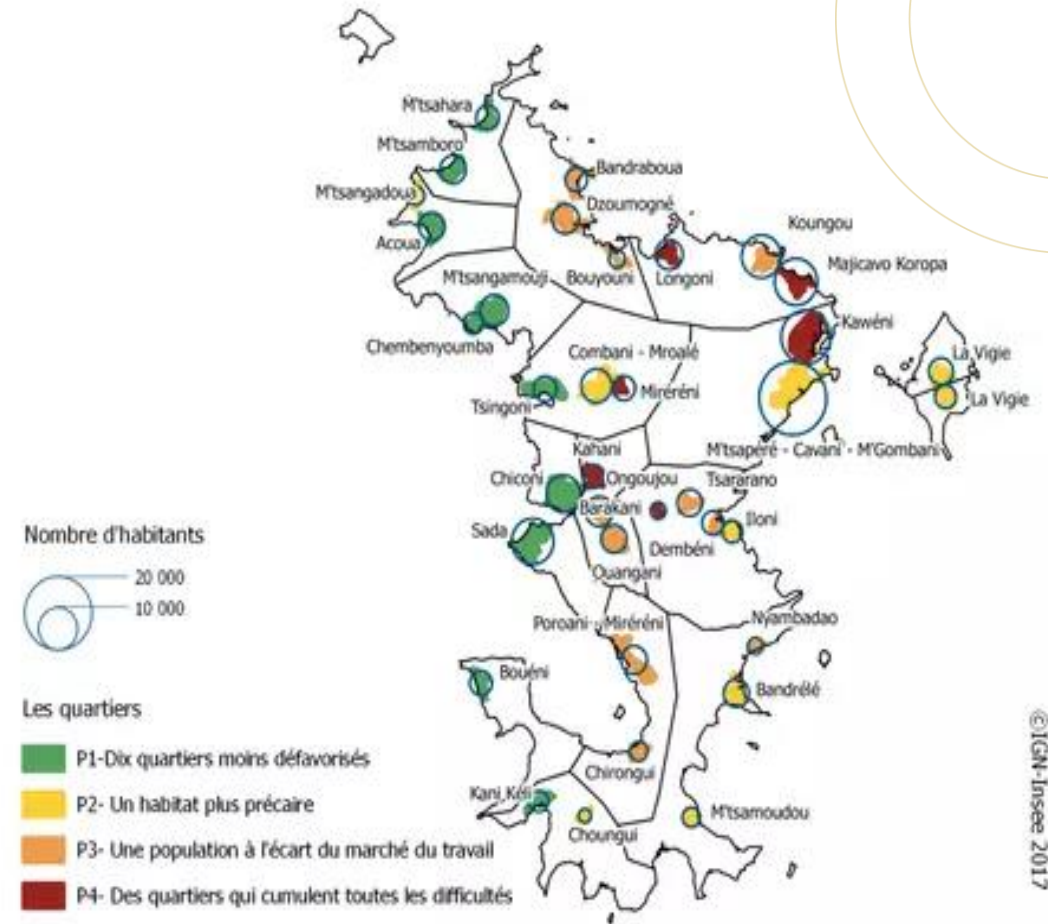
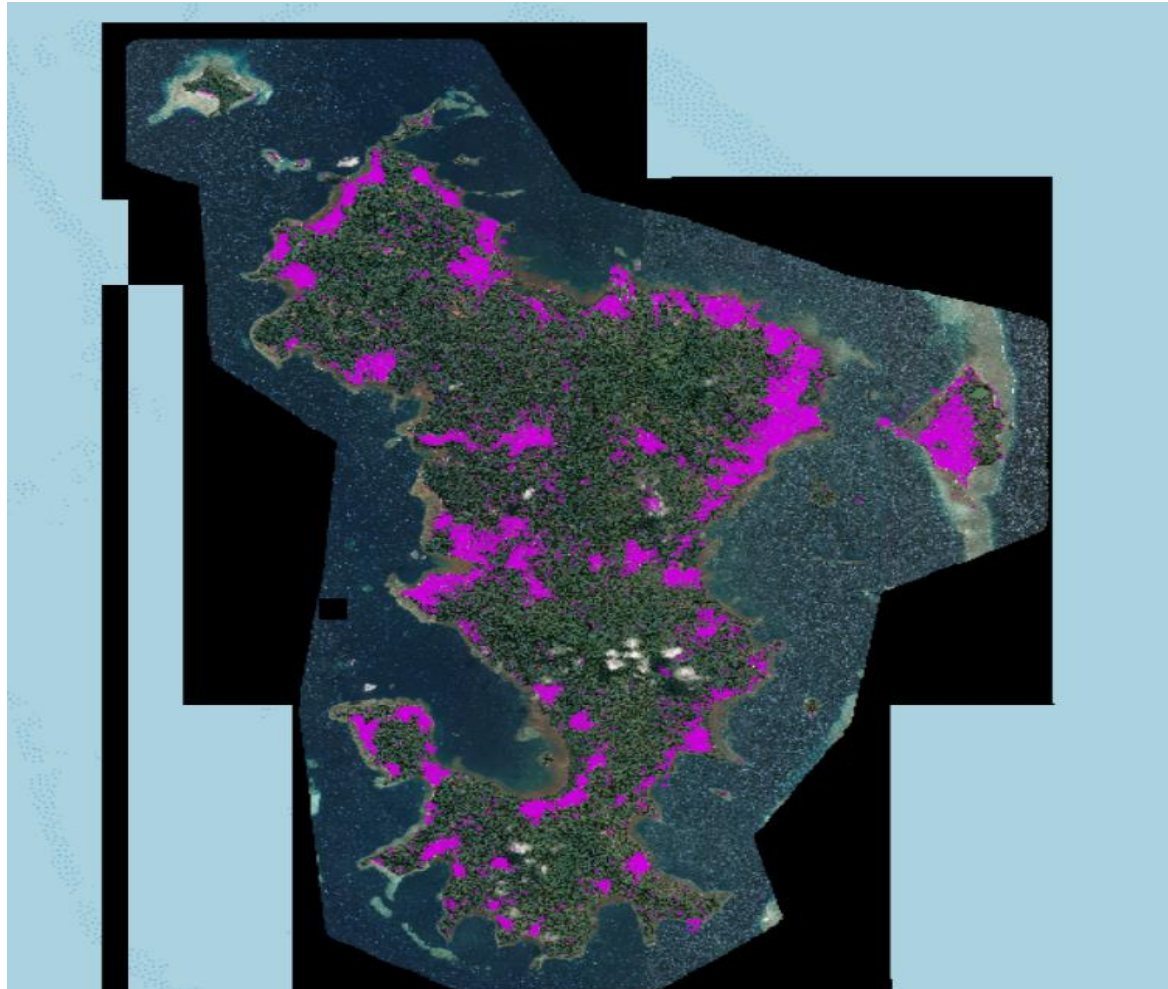
- **Annotations** coming from the topographic database of the French National Geographic Institute.
- Building outlines in **polygon** form. Mismatch between the images and the topographic database, no synchronization.





Training parameters

- Training on a segmentation model like SegFormer
- Training dataset: Martinique and Guadeloupe 2022
- Test on Mayotte





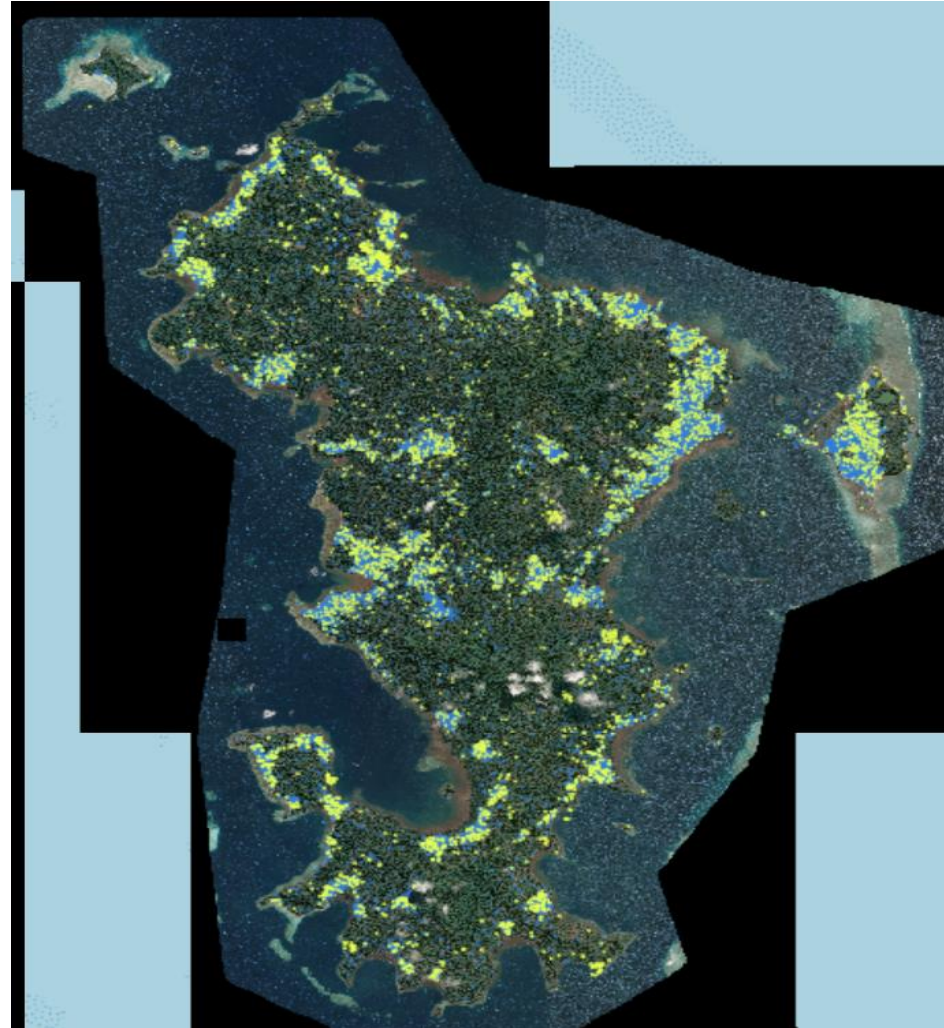
EUROPEAN CONFERENCE ON
QUALITY IN OFFICIAL STATISTICS
2024 ESTORIL - PORTUGAL



INSTITUTO NACIONAL DE ESTATÍSTICA
STATISTICS PORTUGAL

eurostat 

The conference is partly
financed by the European Union





EUROPEAN CONFERENCE ON
QUALITY IN OFFICIAL STATISTICS
2024 ESTORIL - PORTUGAL

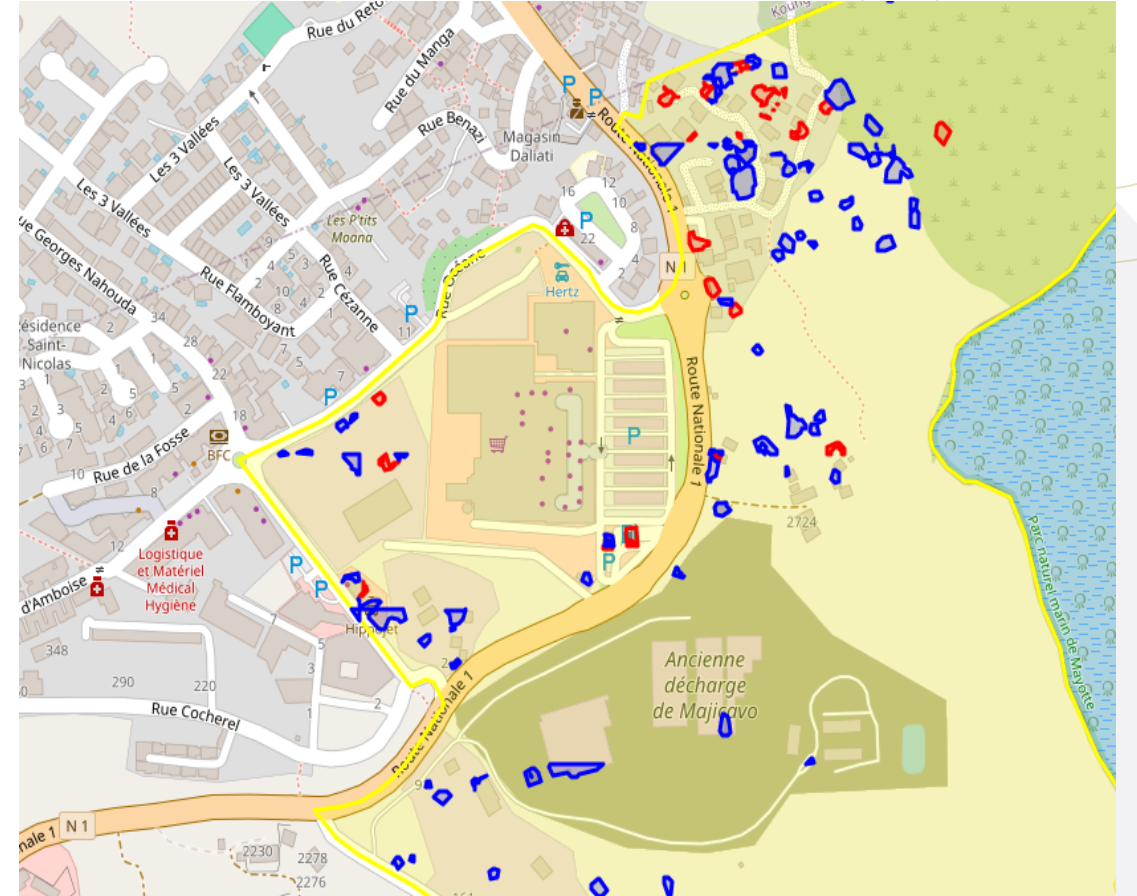
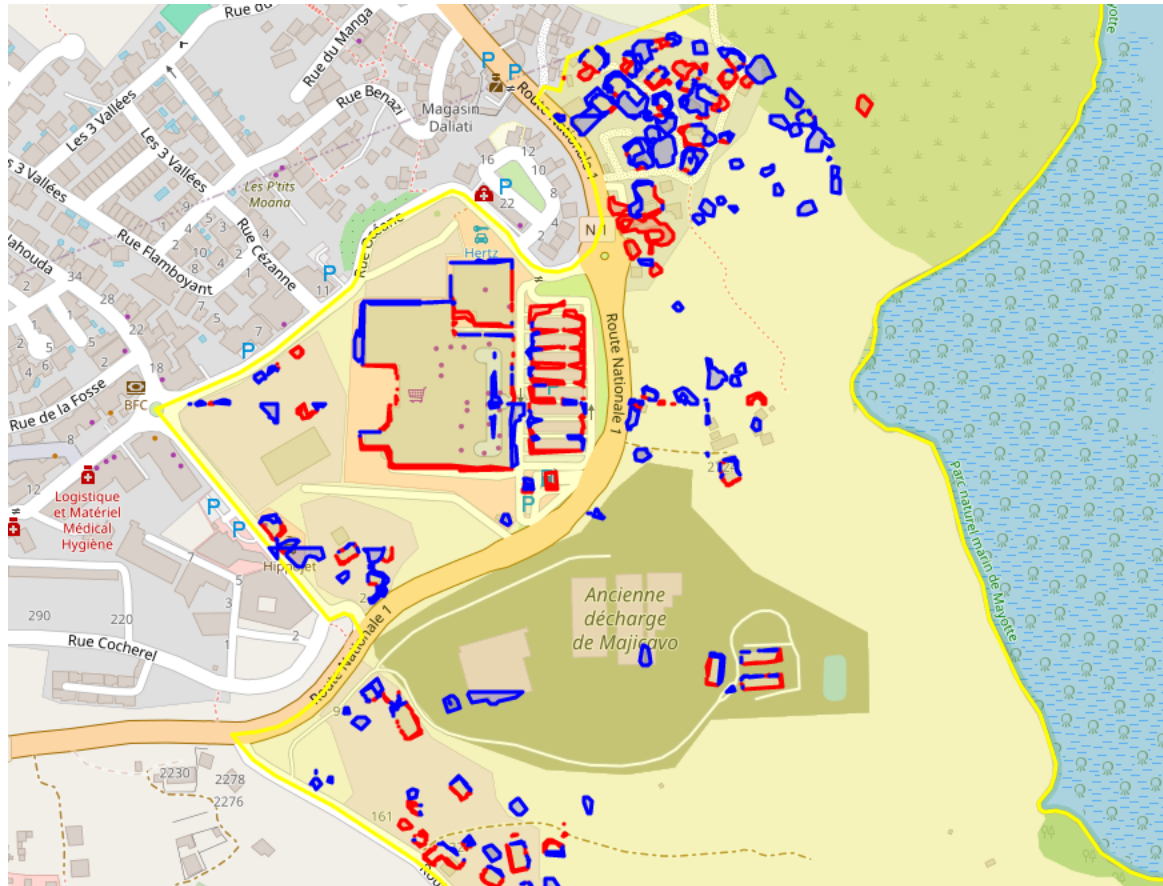


INSTITUTO NACIONAL DE ESTATÍSTICA
STATISTICS PORTUGAL

eurostat 

The conference is partly
financed by the European Union







Possible improvements

- **Final Uses:** Quality population estimates and planning depend on accurate algorithm predictions
- **Training Data:** Model needs diverse temporal/geographical training data beyond 2022 (Martinique & Guadeloupe)
- **Manual Labeling:** Building masks require intensive manual correction; external data sources like OpenStreetMap may help
- **Satellite Imagery:** Sentinel 2 and Spot imagery provide interim estimates; further exploration needed



- **Academic Partnerships:** Collaborate with research institutions for innovation
- **Operational Perspective:** Internalize image acquisition; track lag between ordering and receipt
- **Algorithm Selection:** Continuous research required due to evolving segmentation models
- **Model Review:** Regular retraining needed; agents should verify predictions and suggest improvements
- **Dedicated Team:** A full-time team is vital for project maintenance and development



EUROPEAN CONFERENCE ON
QUALITY IN OFFICIAL STATISTICS
2024 ESTORIL - PORTUGAL

Thanks for your attention!



INSTITUTO NACIONAL DE ESTATÍSTICA
STATISTICS PORTUGAL

eurostat 

The conference is partly
financed by the European Union



EUROPEAN CONFERENCE ON QUALITY IN OFFICIAL STATISTICS 2024 ESTORIL - PORTUGAL