



# EUROPEAN CONFERENCE ON QUALITY IN OFFICIAL STATISTICS 2024 ESTORIL - PORTUGAL



# EUROPEAN CONFERENCE ON QUALITY IN OFFICIAL STATISTICS 2024 ESTORIL - PORTUGAL





EUROPEAN CONFERENCE ON  
QUALITY IN OFFICIAL STATISTICS  
2024 ESTORIL - PORTUGAL

# Inter-agency collaboration - how does it result in an improvement in the quality of child welfare statistics?

Unni Beate Grebstad, Svetlana Beyrer

*Statistics Norway*

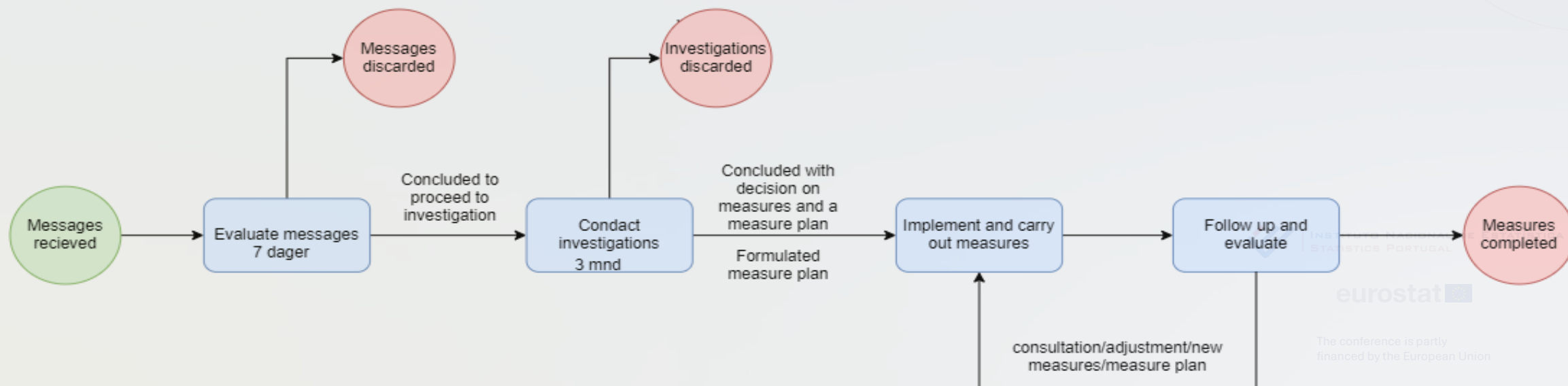


eurostat 

The conference is partly  
financed by the European Union

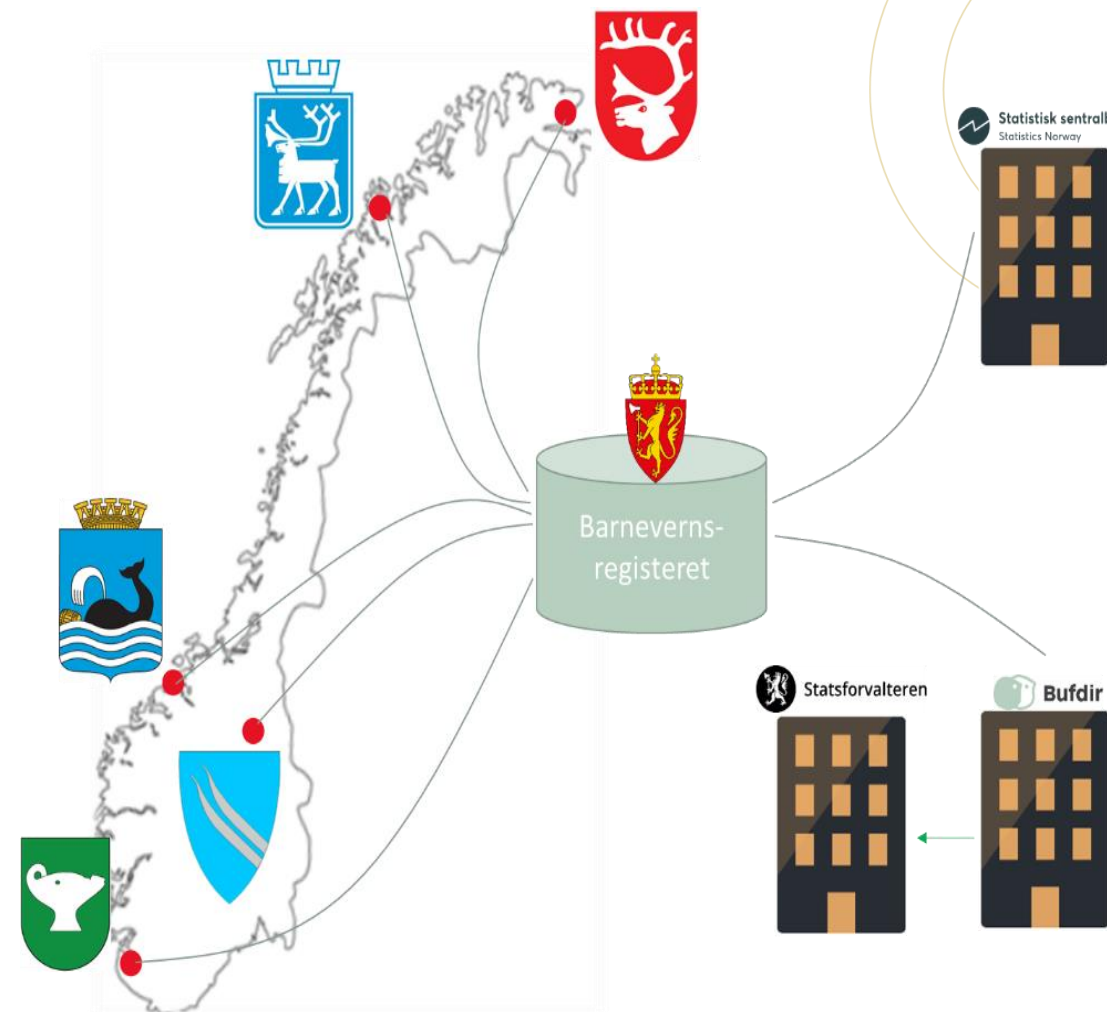


# The procedural flow within the municipal child welfare service in Norway





| Statistics NORWAY<br>(EAK KOSTRA 15.3.24)<br><i>13939: Children receiving measures from the Child Welfare Services during the year and per 31 December, by age and type of measures (M) 2015 - 2023. Statbank Norway (ssb.no)</i> | Children receiving measures during the year (number) |        |        |
|---|--|--------|--------|
|   | 2021   | 2022   | 2023   |
| <b>0 - 24 years</b>   |  |        |        |
| <b>Institutions</b>   | 1 789  | 1 703  | 1 659  |
| <b>Foster homes</b>   | 11 698   | 11 011 | 10 578 |
| <b>Emergency shelter homes</b>  | 1 736  | 1 722  | 1 768  |
| <b>Measures to enhance parenting skills</b>   | 30 656   | 28 035 | 25 454 |
| <b>Measures to enhance the child's development</b>  | 23 759   | 22 610 | 21 816 |
| <b>Supervision and control</b>  | 5 501  | 5 172  | 5 191  |
| <b>Networking/cooperation with other services</b>   | 17 228   | 16 477 | 15 209 |
| <b>Investigation and treatment from other services</b>  | 1 328  | 1 292  | 836    |
| <b>Housing</b>  | 3 827  | 3 738  | 3 587  |

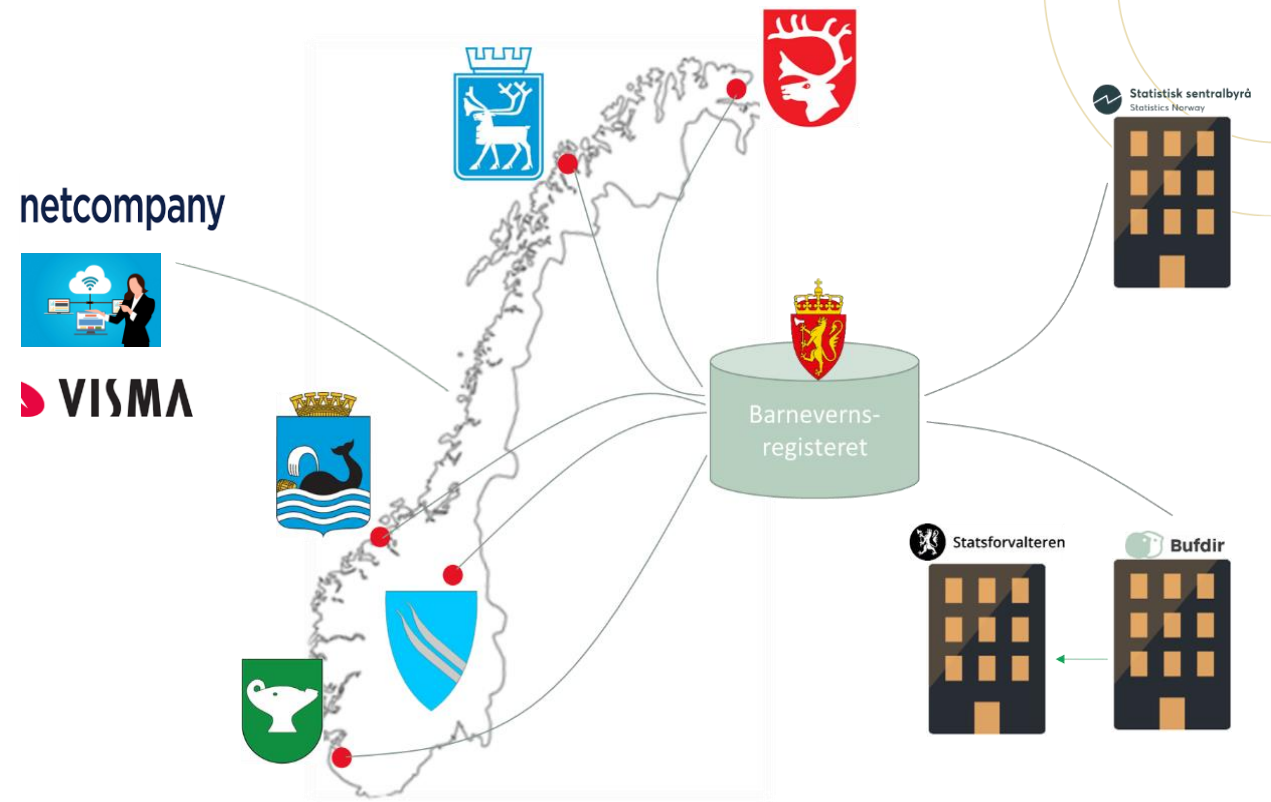




## New technical solution

- Cloud based
- Continuous reporting
- Automated data collecting
- Closer collaboration on data quality

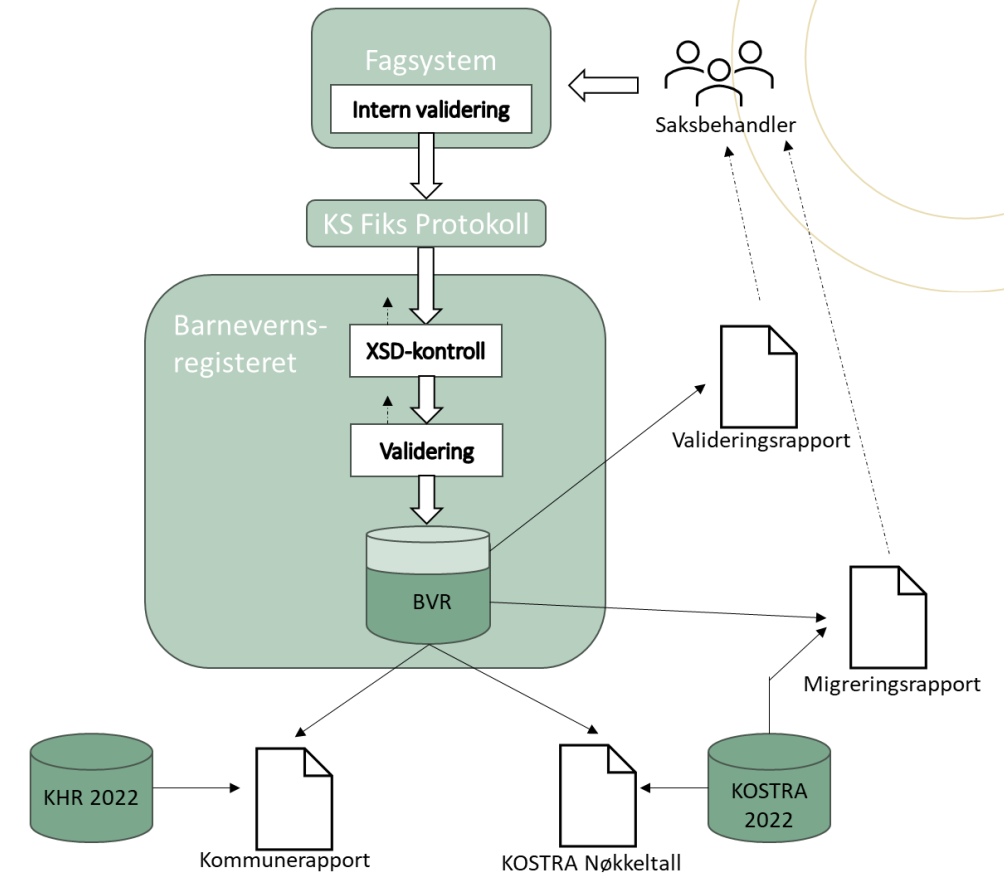
- Opportunities to reuse the solution
- Cloud-based statistics production in SSB





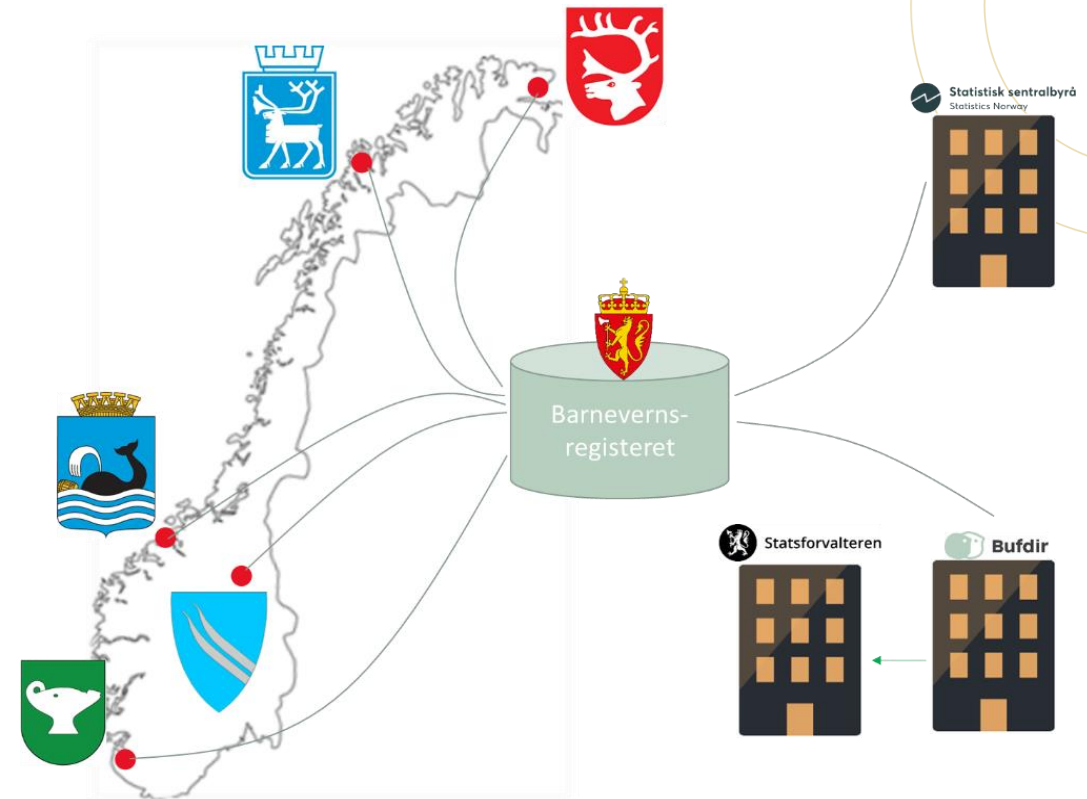
# What is good data quality?

- Full migration
- Elimination of errors in the data
- Coherence with historical data (KOSTRA and KHR)
- No one knows the data better than the municipality itself





# The yearly wheel – SSB & Bufdir







# Child welfare statistics - Norway

|  | 2020    | 2021    | 2022    |   | Children with at least one relocation since the first placement |      |      |      |
|--|---------|---------|---------|---|---|------|------|------|
|  |         |         |         |   | 2019  | 2020 | 2021 |      |
| <b>Children with measures from the CWS during the year</b> | 52 862  | 50 520  | 47 034  |   |   |      |      |      |
| <b>Assistance measures</b>                                 | 43 565  | 41 789  | 38 785  |   |   |      |      |      |
| <b>Care measures</b>                                       | 9 297   | 8 731   | 8 249   |   |   |      |      |      |
| <b>Children with measures from the CWS per 31 December</b> | 36 848  | 35 094  | 32 276  |   |   |      |      |      |
| <b>Assistance measures</b>                                 | 28 704  | 27 436  | 25 052  |   |   |      |      |      |
| <b>Care measures</b>                                       | 8 144   | 7 658   | 7 224   |   |   |      |      |      |
| <b>Children with placement measures per 31 December</b>    | 14 177  | 13 508  | 12 989  |   |   |      |      |      |
| <b>Assistance measures</b>                                 | 6 033   | 5 850   | 5 765   |   |   |      |      |      |
| <b>Care measures</b>                                       | 8 144   | 7 658   | 7 224   |   |   |      |      |      |
| <b>Notifications during the year</b>                       | 56 802  | 53 468  | 49 778  |   |   |      |      |      |
| <b>Investigations started during the year</b>              | 45 464  | 41 933  | 37 936  |   |   |      |      |      |
| <b>Investigations closed during the year</b>               | 45 579  | 43 514  | 38 030  |   |   |      |      |      |
| <b>Total, employees</b>                                    | 6 308.8 | 6 430.5 | 6 647.3 |   |   |      |      |      |
|  |         |         |         | <b>1-2 years since first placement</b>        | 1. Foster homes of family and close network                     | 415  | 370  | 395  |
|  |         |         |         |   | 2. Foster homes outside family and close network                | 903  | 764  | 640  |
|  |         |         |         |   | 3. Emergency shelter homes outside family and close network     | 434  | 362  | 327  |
|  |         |         |         | <b>3-4 years since first placement</b>        | 1. Foster homes of family and close network                     | 390  | 345  | 307  |
|  |         |         |         |   | 2. Foster homes outside family and close network                | 1054 | 909  | 787  |
|  |         |         |         |   | 3. Emergency shelter homes outside family and close network     | 86   | 97   | 72   |
|  |         |         |         | <b>5 years and more since first placement</b> | 1. Foster homes of family and close network                     | 455  | 632  | 719  |
|  |         |         |         |   | 2. Foster homes outside family and close network                | 1321 | 1724 | 1992 |
|  |         |         |         |   | 3. Emergency shelter homes outside family and close network     | 97   | 104  | 143  |



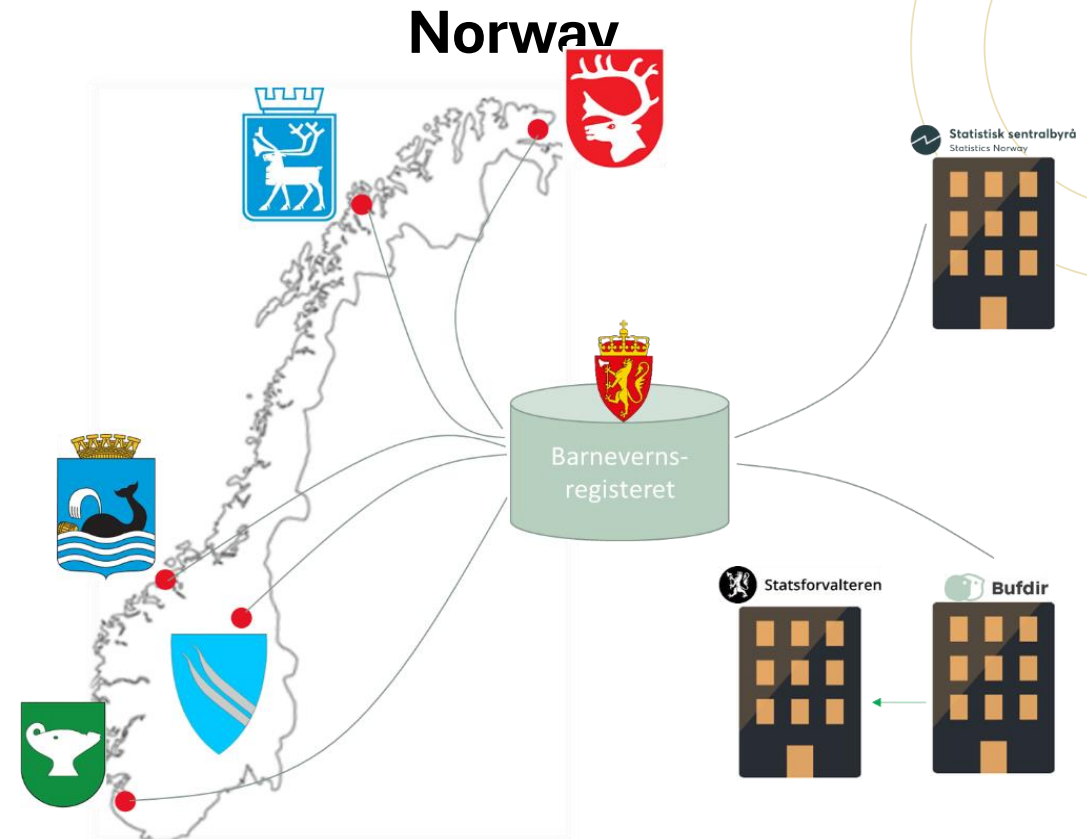
# Child Welfare Registry (CWR/BVR)

## Integration with the registry:

- 109 municipalities - 30% of Norway's population.

## Data submission:

- Over 55% of Norway's municipalities will submit data to the Child Welfare Registry (CWR/BVR)
- Nearly 70% of the country's population will be included in 2024





# EUROPEAN CONFERENCE ON QUALITY IN OFFICIAL STATISTICS 2024 ESTORIL - PORTUGAL