

# Global Wildland Fire Network



## REGIONAL EASTERN AFRICA FIRE MONITORING RESOURCE CENTER (REAFMRC)

*Harifidy RAKOTO RATSIMBA*



### Retrospective 2019-2023

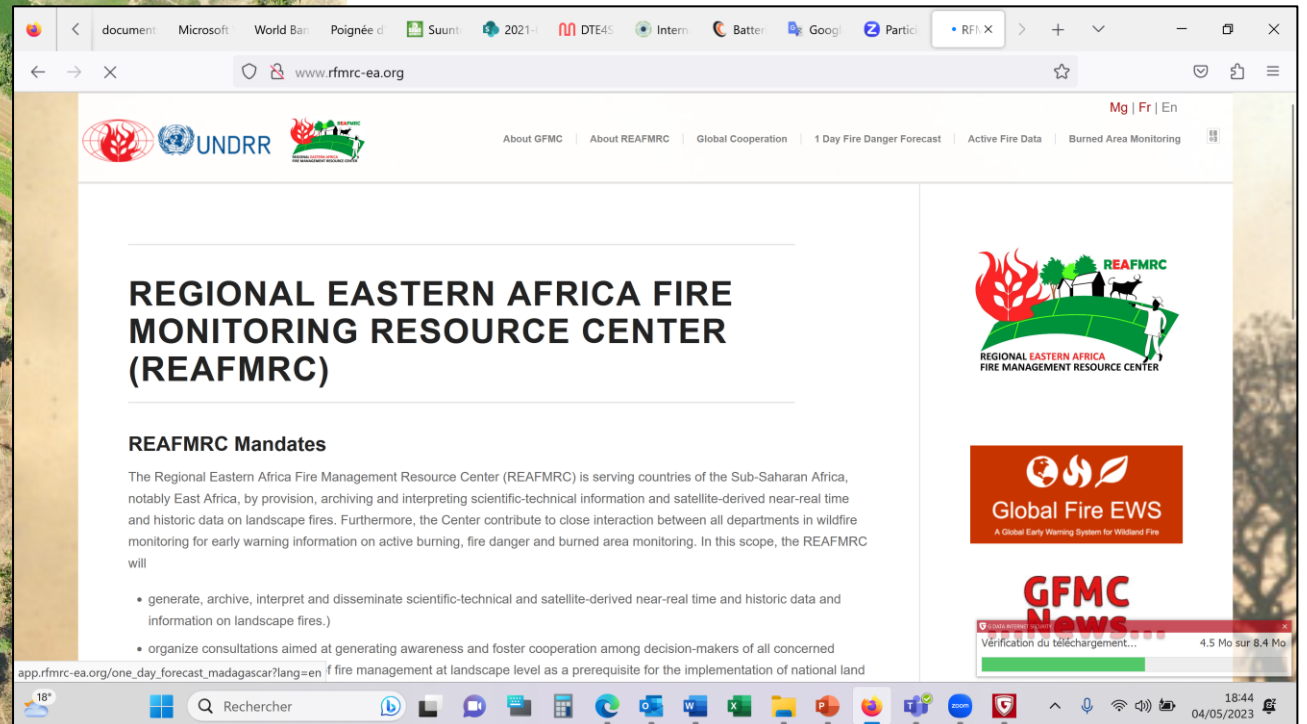
- Key challenges and significant events
- Progress in Integrated fire management
- Institutional capacity building and policy development



**8<sup>TH</sup>**  
INTERNATIONAL  
WILDLAND FIRE  
CONFERENCE

# REGIONAL EASTERN AFRICA FIRE MONITORING RESOURCE CENTER (REAFMRC)

## Key challenges and significant events



The screenshot shows the homepage of the Regional Eastern Africa Fire Monitoring Resource Center (REAFMRC) website. The browser address bar shows the URL [www.rfmrc-ea.org](http://www.rfmrc-ea.org). The page features the REAFMRC logo, which includes a stylized fire, a tree, and a cow, with the text "REGIONAL EASTERN AFRICA FIRE MANAGEMENT RESOURCE CENTER". Below the logo, the text "REGIONAL EASTERN AFRICA FIRE MONITORING RESOURCE CENTER (REAFMRC)" is displayed in large, bold letters. Underneath, the "REAFMRC Mandates" section is visible, starting with the text: "The Regional Eastern Africa Fire Management Resource Center (REAFMRC) is serving countries of the Sub-Saharan Africa, notably East Africa, by provision, archiving and interpreting scientific-technical information and satellite-derived near-real time and historic data on landscape fires. Furthermore, the Center contribute to close interaction between all departments in wildfire monitoring for early warning information on active burning, fire danger and burned area monitoring. In this scope, the REAFMRC will". A bulleted list follows, detailing the center's mandates. On the right side of the page, there are two promotional banners: "Global Fire EWS" (A Global Early Warning System for Wildland Fire) and "GFMC News" (Verification du téléchargement... 4.5 Mo sur 8.4 Mo). The browser's taskbar at the bottom shows the Windows logo, a search bar with "Rechercher", and various application icons. The system tray in the bottom right corner displays the date "04/05/2023" and the time "18:44".

document Microsoft World Ban Poignée d Suunt 2021- DTE45 Intern Batter Googl Partici RFI X

www.rfmrc-ea.org

Mg | Fr | En

About GFMC | About REAFMRC | Global Cooperation | 1 Day Fire Danger Forecast | Active Fire Data | Burned Area Monitoring

## REGIONAL EASTERN AFRICA FIRE MONITORING RESOURCE CENTER (REAFMRC)

### REAFMRC Mandates

The Regional Eastern Africa Fire Management Resource Center (REAFMRC) is serving countries of the Sub-Saharan Africa, notably East Africa, by provision, archiving and interpreting scientific-technical information and satellite-derived near-real time and historic data on landscape fires. Furthermore, the Center contribute to close interaction between all departments in wildfire monitoring for early warning information on active burning, fire danger and burned area monitoring. In this scope, the REAFMRC will

- generate, archive, interpret and disseminate scientific-technical and satellite-derived near-real time and historic data and information on landscape fires.)
- organize consultations aimed at generating awareness and foster cooperation among decision-makers of all concerned

app.rfmrc-ea.org/one\_day\_forecast\_madagascar?lang=en f fire management at landscape level as a prerequisite for the implementation of national land

18°

Rechercher

18:44  
04/05/2023





## REGIONAL EASTERN AFRICA FIRE MONITORING RESOURCE CENTER (REAFMRC)

### Key challenges and significant events

- Madagascar
- Erythrea
- Ethiopia
- Kenya
- Uganda
- Burundi
- Djibouti
- Malawi
- Mozambique
- Rwanda
- Tanzania
- Zambia
- Zimbabwe

[www.rfmrc-ea.org](http://www.rfmrc-ea.org)

- Active Fires
- Monthly burnt area
- Annually burnt area
- Fire forecast

- Historical data (2016 - ...)
- Near Real time for Fire forecast (on demand basis)

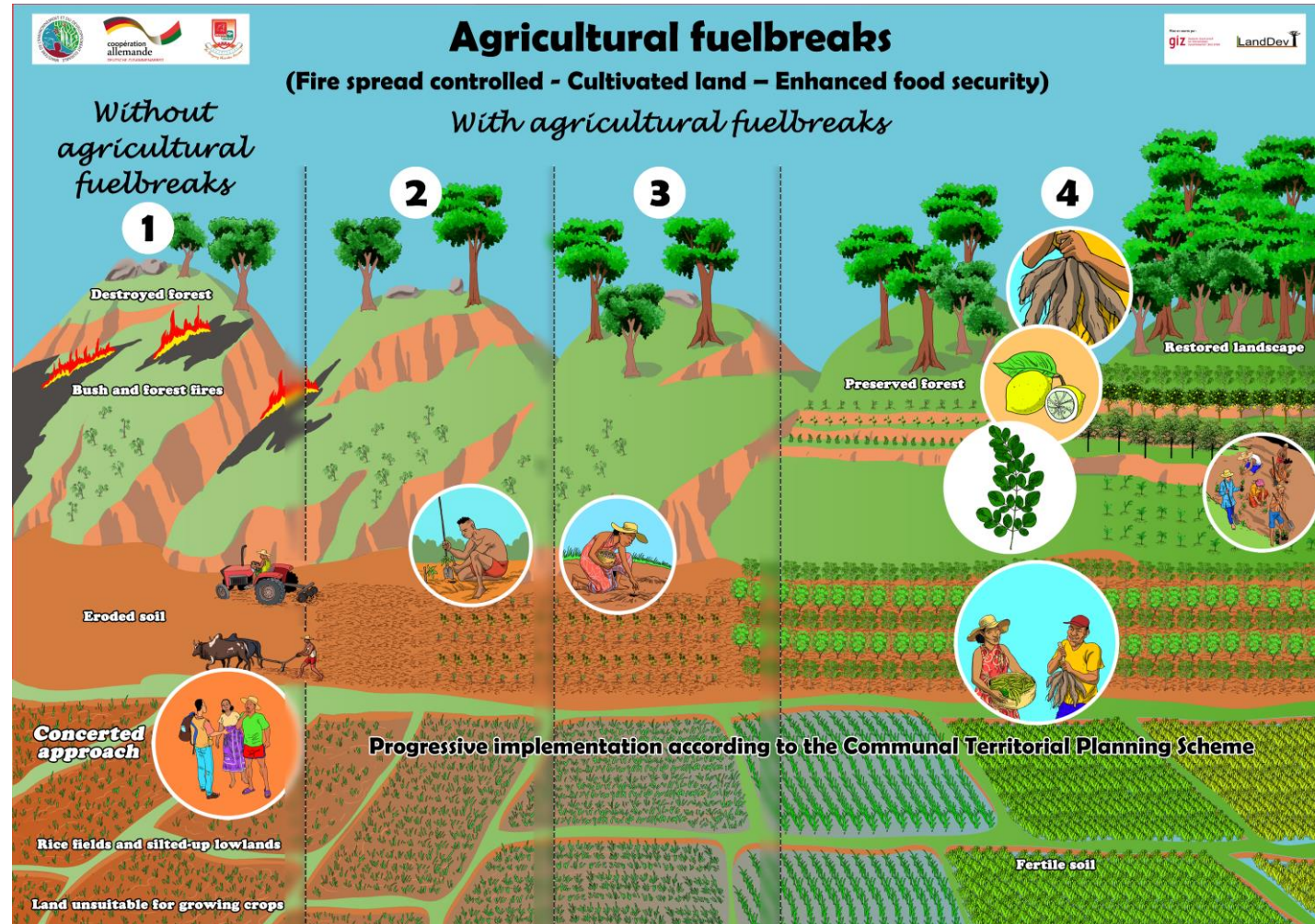
Tahintsoa G.E., Raherinjatovoarison D., Rakotoarinivo H.Z., Ratsimandresy R.N. and Rakoto Ratsimba H., 2022. Using satellite images to monitor burned areas in Madagascar.

<https://doi.org/10.55515/FIOP8254>

## REGIONAL EASTERN AFRICA FIRE MONITORING RESOURCE CENTER (REAFMRC)

### Progress in Integrated Fire Management

Rakoto Ratsimba H.,  
 Andriamiharimanana J.N.,  
 Braun M. and Goldammer J.G., 2022. Agricultural fuelbreaks in sustainable fire-resilient landscapes in Madagascar.  
<https://doi.org/10.55515/PJM X6791>



## REGIONAL EASTERN AFRICA FIRE MONITORING RESOURCE CENTER (REAFMRC)

Institutional capacity building and policy development with the Government of Madagascar

- Sharing available tools
- Developing new capacities
- Making data available (multiple level, multiple purpose, multiple sectors)
- Facilitating discussion across sectors (land tenure / territorial planning)
- Policy notes

