

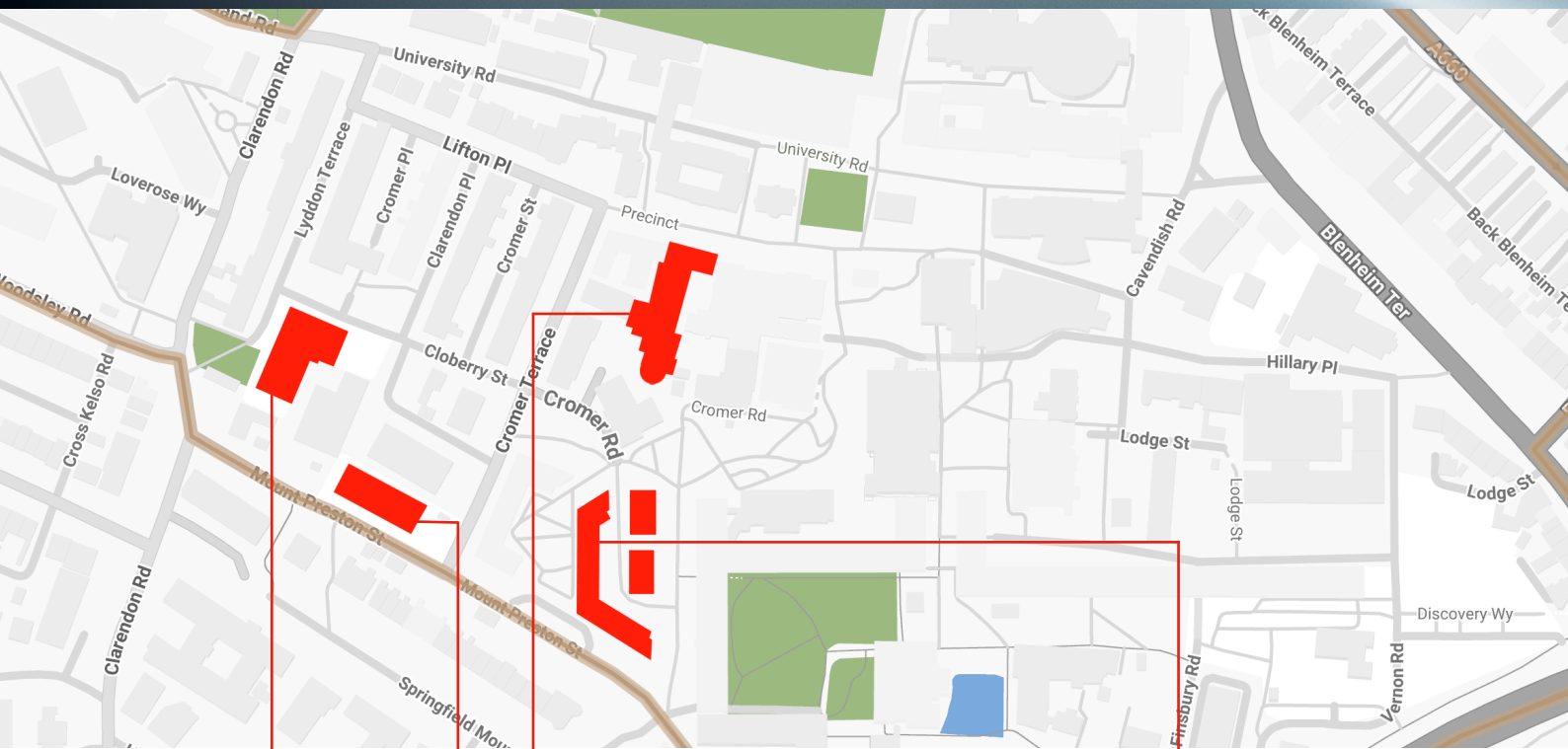


MML2025

12th International Symposium → on Metallic Multilayers

University of Leeds, Leeds, UK
13–18 July 2025

Conference Location Plan



Ether Simpson Building

- Sessions
- Exhibition
- Breaks and lunch



Newlyn Building

- Poster sessions



Refectory

- Sunday's welcome drinks
- Tuesday's Early career research event
- Breakfast for residents of the onsite accommodation only



Onsite accommodation

[Find out more →](#)