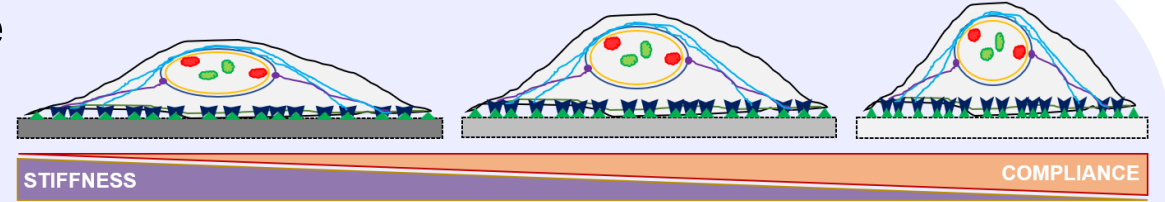
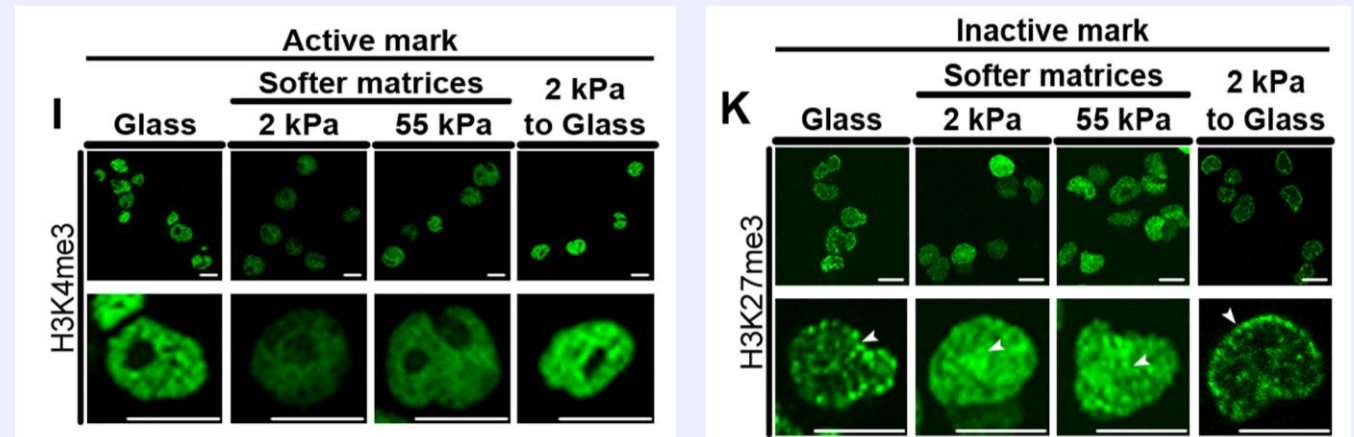
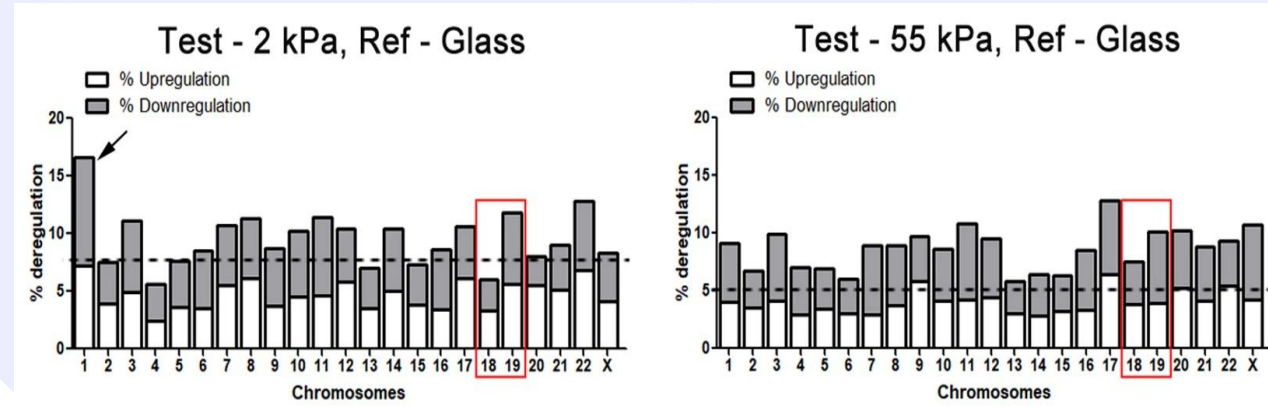
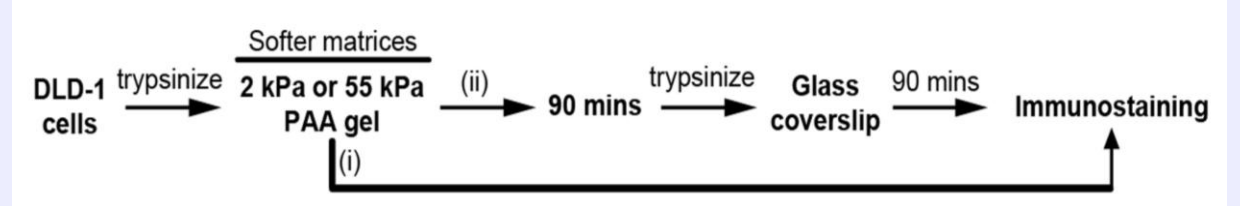
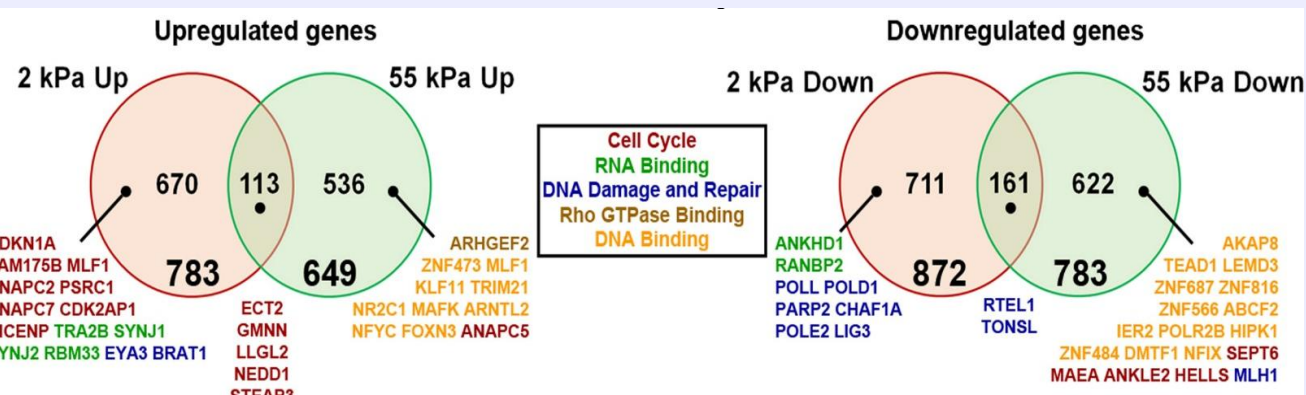




- Impact of altered extracellular stiffness on nuclear architecture (histone modifications and chromosome territory organization)
- Role of nuclear envelope proteins in chromatin organization



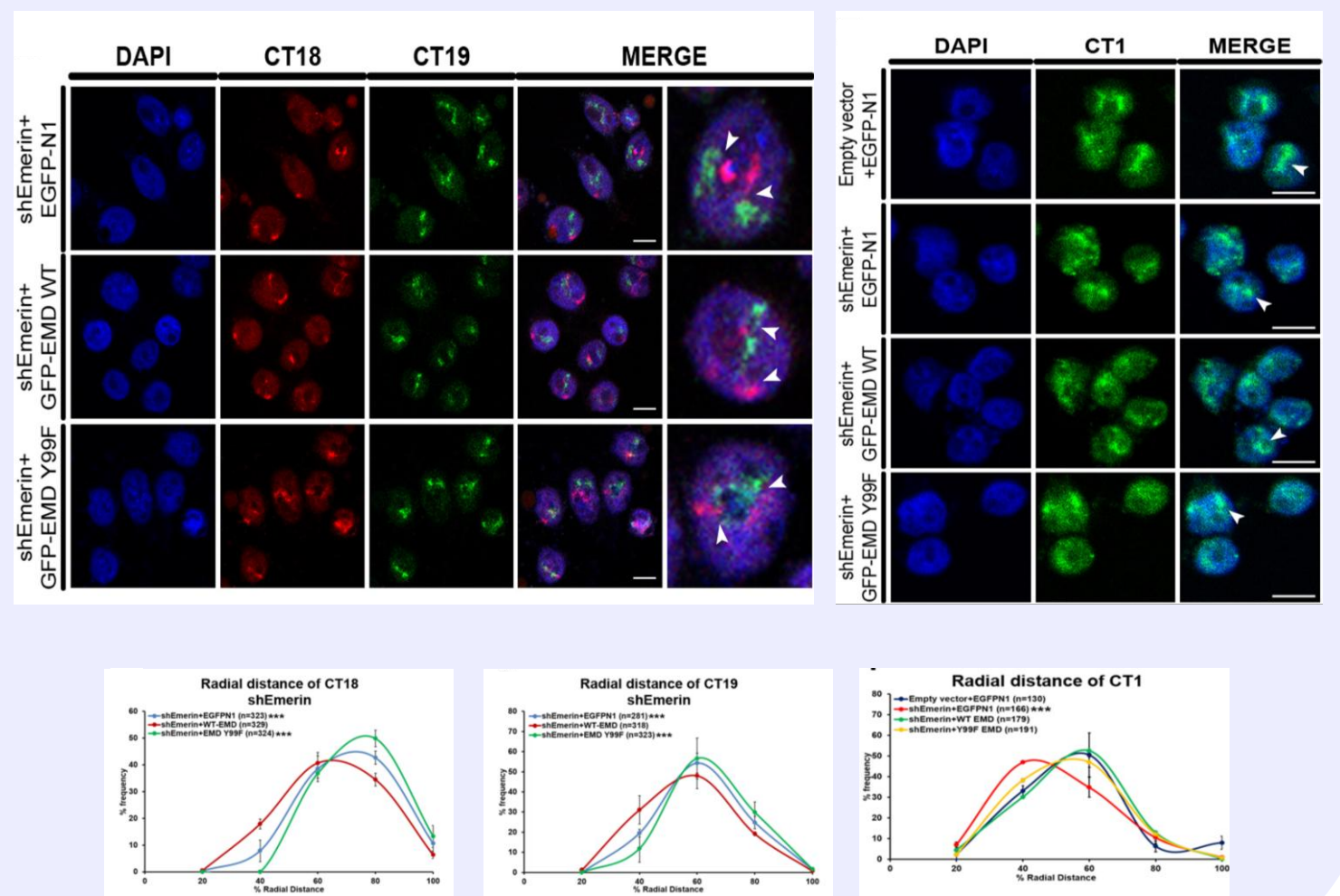
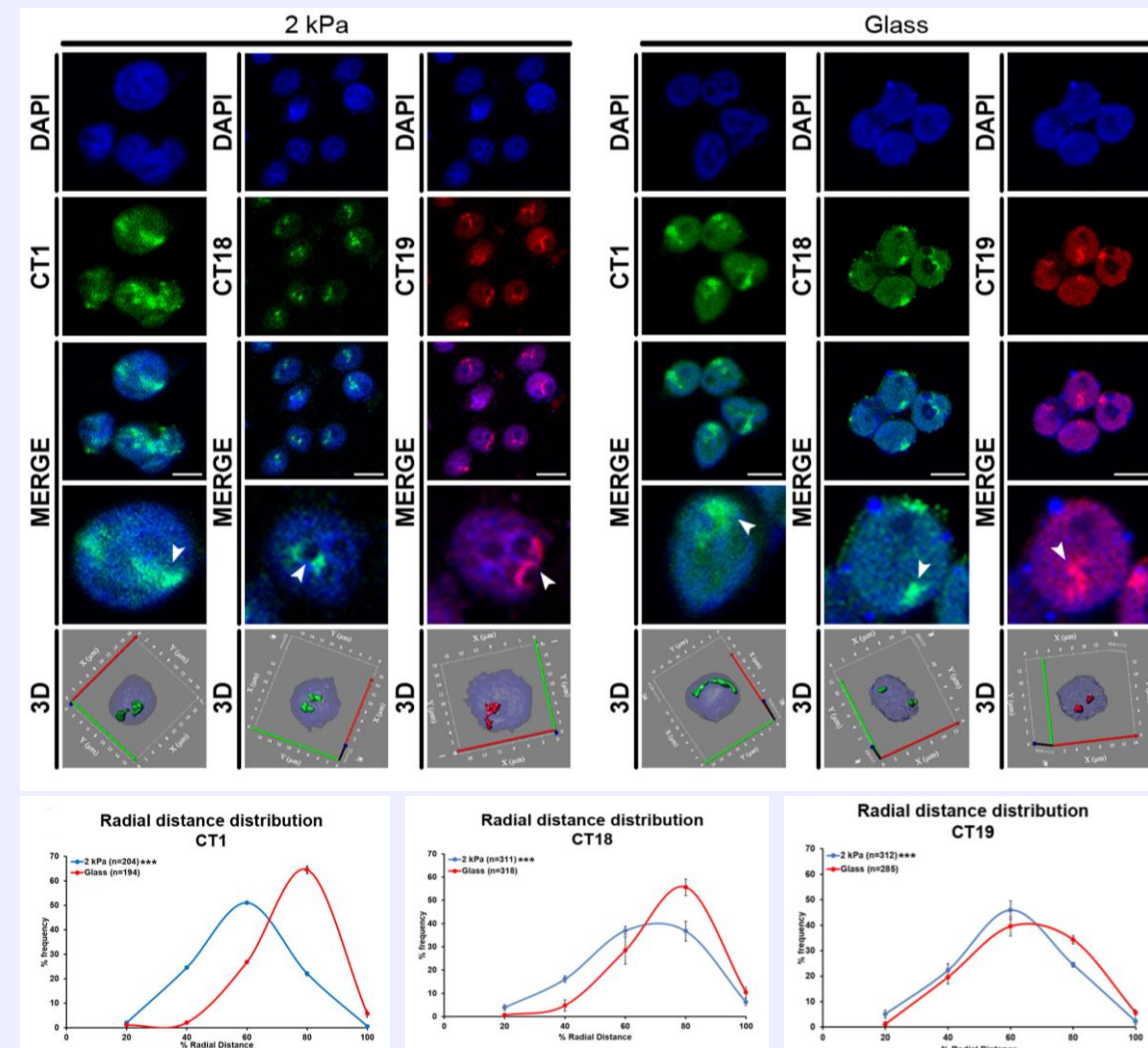
Transcriptional deregulation and mislocalization of inactive histone marks in cells on softer matrices



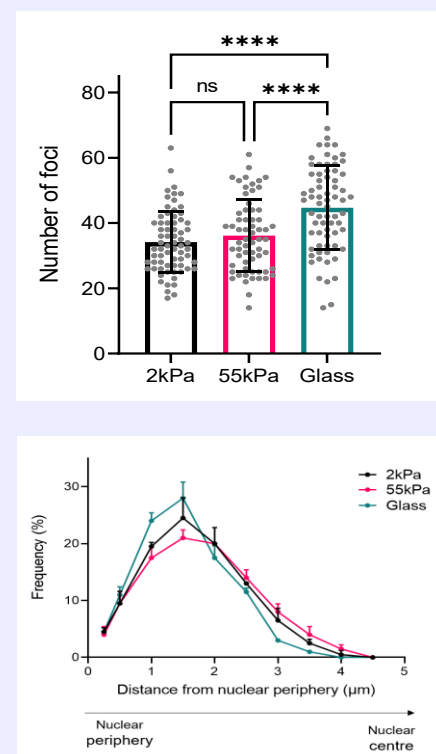
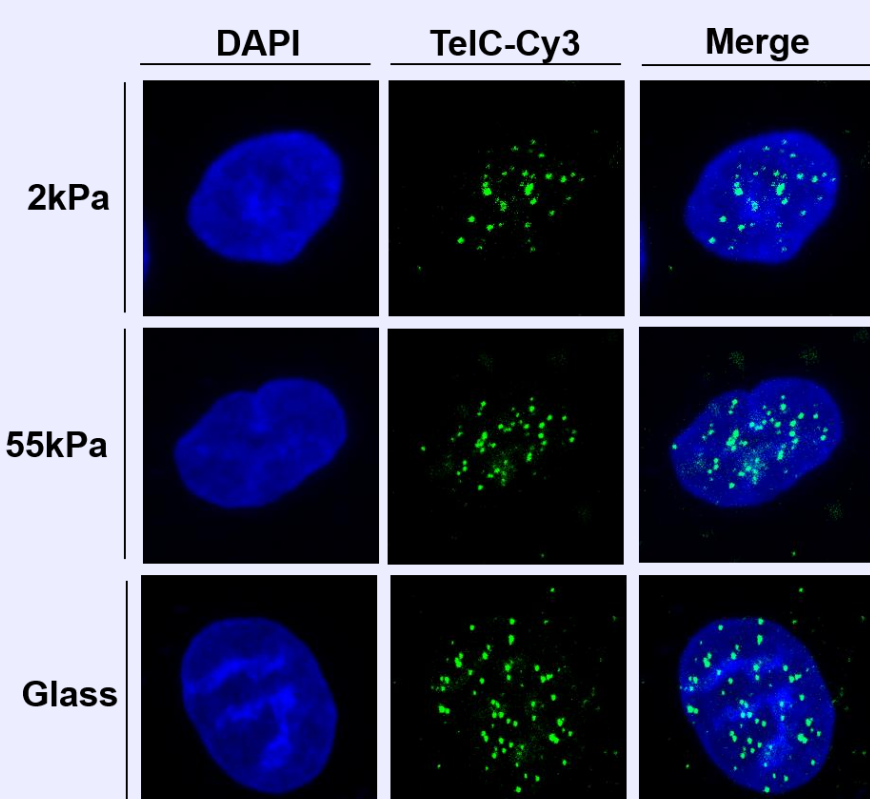
Chromosome territory (CT) organization is altered on softer substrates

CT1 and CT18 are mislocalized to the nuclear interior

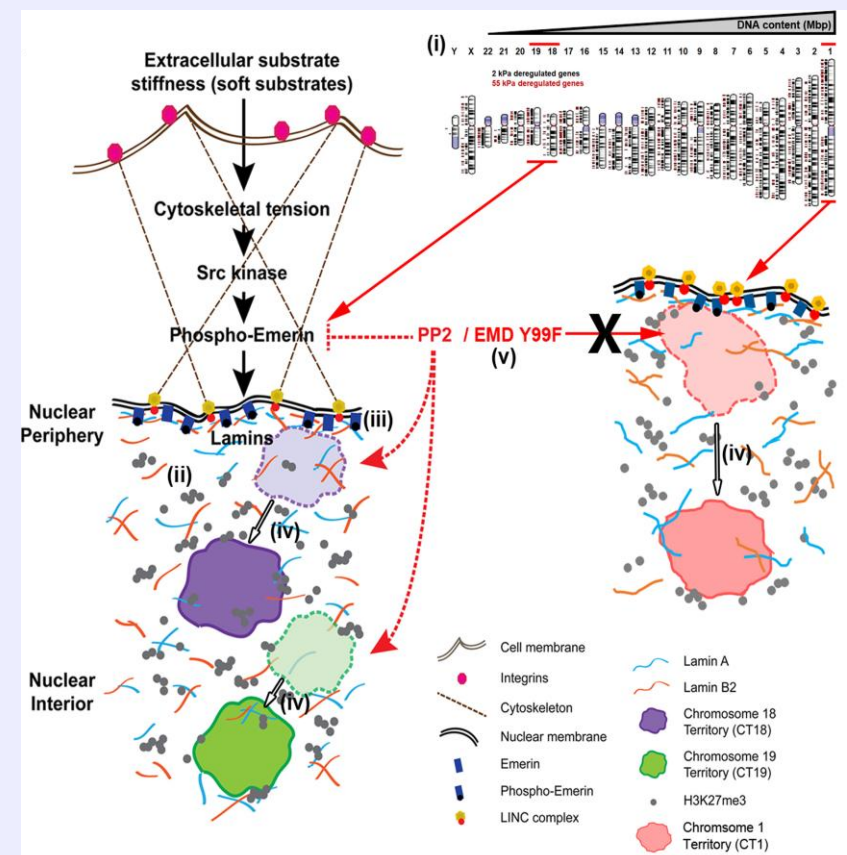
Emerin Y99F selectively abrogates mislocalization of chromosome territories



Telomere organization is dependent on substrate stiffness



Discussion



Acknowledgement