



Alex Loleyt
CEO, Traverse Health

Using AI to Address Bias and Improve Access in Medical Research



Traverse Health

Key challenges in population health

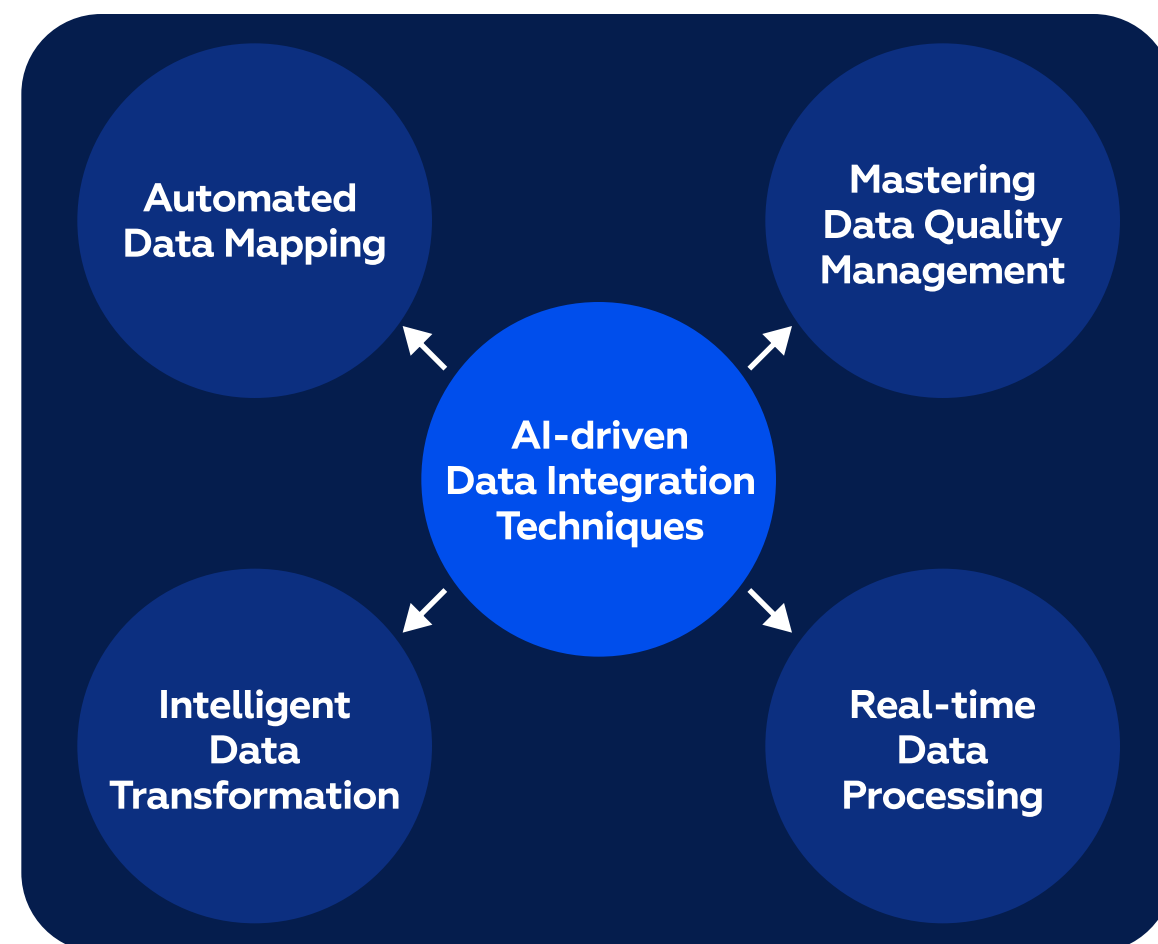
1. Disparities in healthcare access and outcomes and fragmented healthcare data
2. Rising burden of chronic diseases and limited resources for targeted prevention
3. Difficulty in assessing long-term treatment effectiveness across diverse populations



AI plays transformative role in enhancing population health

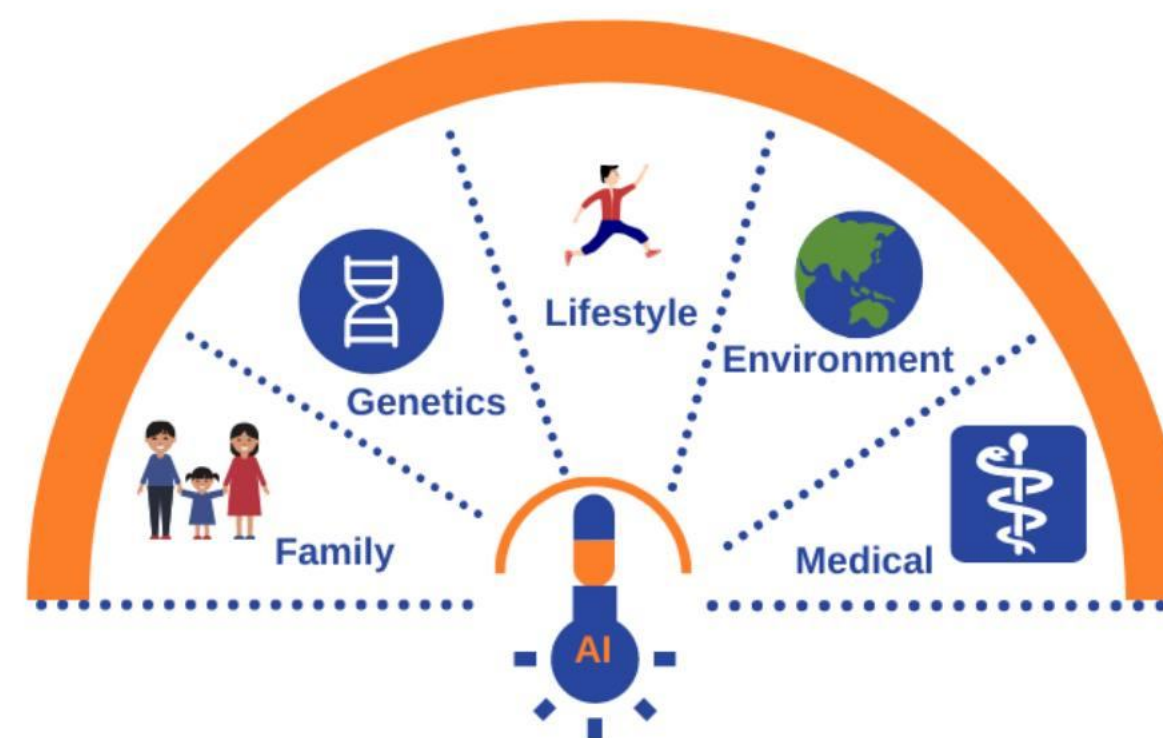
01

AI can integrate fragmented healthcare data from various sources, providing a unified view of patient populations.



02

AI enables early detection and prevention of chronic diseases by analyzing patterns in real-world data.



03

AI continuously tracks treatment outcomes across diverse populations, making it easier to evaluate long-term therapies efficacy.



Traverse Health solves challenges in healthcare with data and AI

Mission:

Promote health equity by focusing on underrepresented populations.

Federated Network:

Partner with hospitals in MENA and APAC to capture diverse real-world data (RWD).

Intersystems Partnership:

Provides unlimited licenses to global partners, ensuring seamless, secure data exchange.



Risk assessment in chronic conditions development and management

Partner:



The #1 multi-service Benelux platform for personal health & vitality



What we did:

We integrate real world data into long-term health and longevity insights.

Analyzing data from:

- Lab tests
- Wearable devices
- Questionnaires and PROs
- EHR & Biobank data
- Daily exercise and sleeping routines

Result:

Proprietary engine for risk assessment in metabolic disorders and cvd.

Navigating Migraine Management with Real-World Data

Partner:

ACIBADEM

a leading center for clinical research in MENA region



What we did:



Refined the dataset to 11,023 patients who met all inclusion criteria to explore migraine treatment variations across different demographics.

Result:

Breakthrough insights regarding the unmet need:

30% of patients had to switch therapy

12.3% of patients visited emergency department, due to severe symptoms, highlighting deficiencies in current treatments.

What's next: Developing the premier breast cancer dataset in EMEA

COMPREHENSIVE
BREAST CANCER
DATASET: 23,174
PATIENT PROFILES

The Traverse Health breast cancer registry offers a rich source of real-world data on molecular markers, BRCA and other relevant mutations, and various clinical data points. Our database enables in-depth analysis of molecular patterns, treatment responses, risk factors, comorbidities, and prognostic outcomes.



Traverse Health: driving innovation through partnerships

Data owners and providers

Join us to:

- expand diverse real-world data
- enhance data quality
- ensure secure, privacy-preserving data sharing

Research institutions and think tanks

Partner with us to:

- harmonize data standards for cross-border compatibility
- support AI-driven research
- shape public health strategies through actionable insights

Industry

Work with us to:

- co-develop innovative solutions addressing unmet needs and improving health outcomes
- accelerate drug development
- leverage AI for personalized medicine

**Please get in touch if you want
to know more or become a partner**

**Alex Loleyt
CEO, Traverse Health
alex@traverse.health
+31 6 4186 7545**



Traverse Health