



Using CLIL and MFL strategies to maximise the curriculum for EAL learners

Jane Driver, Queen Katharine Academy

10:25 – 11:06am

Saturday 13th March



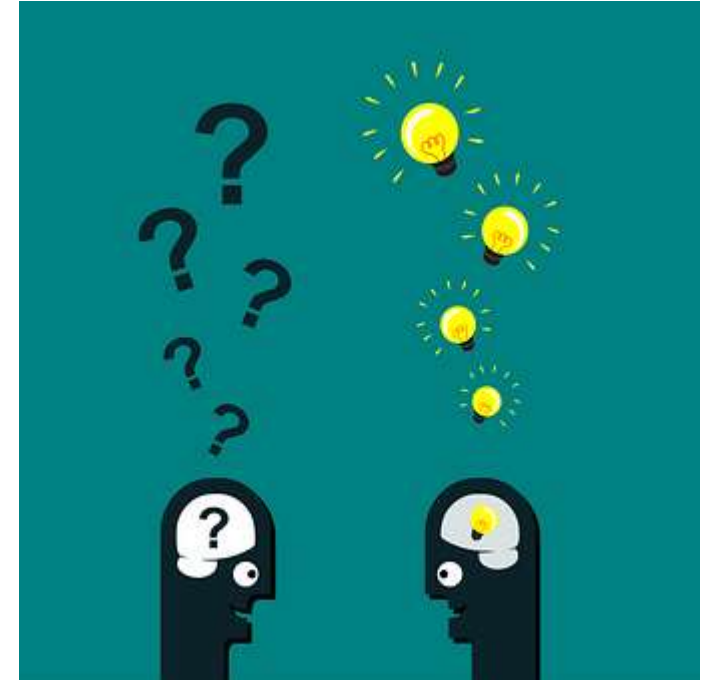
Queen Katharine
Academy

To be an inclusive centre of educational excellence



Linguists have amazing brains!

- Bilingualism promotes the integrity of white matter as we age - **our brains work faster and better!**
- Bilingualism increases in grey matter volume – **we have bigger and healthier brains!**
- Bilingualism changes the structures of the brain which are the newest in terms of evolution – **we are a more advanced species!**
- Bilinguals are constantly managing interference from the other language(s) – **we have better control, attention and focus!**



Linguists are amazing teachers!

- consolidation / interleaving / daily review
- Chunking / steps
- Questioning
- Modelling
- Practice
- Scaffolding



** Rosenshine's Principles of Instruction**



Linguists can change the world!



Queen Katharine
Academy

To be an inclusive centre of educational excellence



Unity of Purpose : Trust | Diversity | Excellence | Transformation

Prepare for EAL and Literacy

WIGS

- Word
- Image
- Gesture
- Speech



KISS

- Keep it short and simple



PEALit



Hayley Gilson

Accelerated Curriculum Leader

Queen Katharine Academy



QKA Journey

5 years ago

- OFSTED Unsatisfactory (Special Measures)
- Falling Roll
- Challenges: Behaviour, Attendance, Safety
- **Very deprived cohort (by postcode).**
- **45% of students with safe-guarding records.**
- **Majority first-generation migrants – low English competency.**
- **Large churn of students: Over 200 in-year arrivals.**
- **42 languages spoken.**
- **Growing European Gypsy-Roma cohort**

Today

- OFSTED Good ✓
- Increasing roll ✓
- Challenges: Attainment, Cultural Capital ✓
- **Very deprived cohort (by postcode).**
- **45% of students with safe-guarding records.**
- **Majority first-generation migrants – low English competency.**
- **Large churn of students: Over 200 in-year arrivals.**
- **42 languages spoken.**
- **Large European Gypsy-Roma cohort**



Queen Katharine
Academy

To be an inclusive centre of educational excellence



The Journey

International / MFL Profile

- Projects
- International links (Erasmus+)

 BRITISH
COUNCIL

INTERNATIONAL
SCHOOL AWARD



Languages

learning curve
education

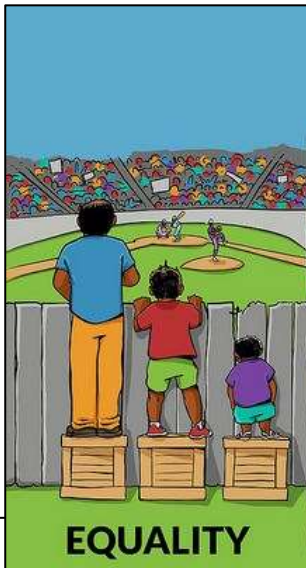
routes into
LANGUAGES
East



EAL

Context

- Partner Schools
- European Roma



Curriculum

- Dual-curricular route:
 - Accelerated (CLiL)
 - Aspire (Traditional)



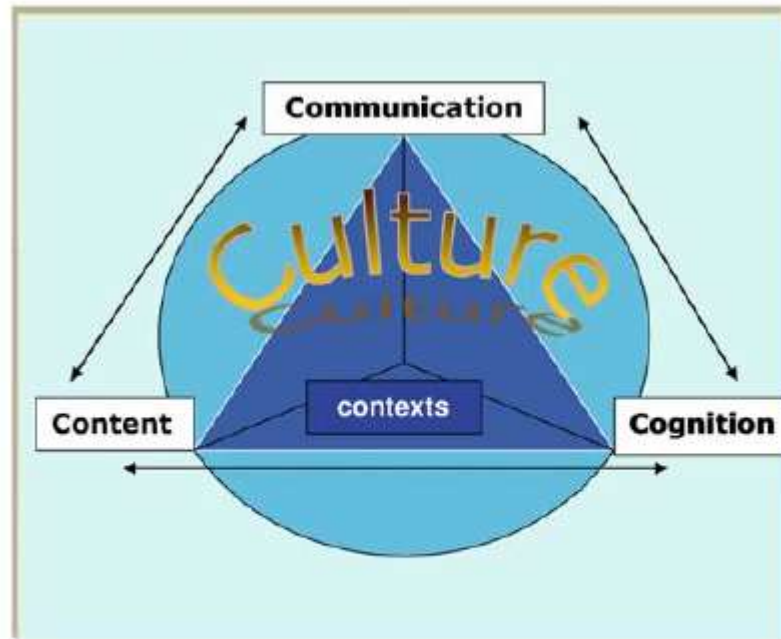
Queen Katharine
Academy



CLiL

ADiBE

- Do Coyle & Kim Bower



The 4Cs framework for CLIL (Coyle, 2005).

Reconceptualising Language Learning



The Language Triptych

Coyle, Hood, Marsh, 2010



Queen Katharine
Academy

To be an inclusive centre of educational excellence



CLiL



- History, Geography & PSHE – Languages & Accelerated



Lunes 23 de Marzo de 2020

Drácula

Sesión 1

La esclavitud

Hoy vamos a...

- Identificar los Derechos Humanos
- Entender la diferencia entre libertad, esclavitud y ser prisionero



Explica la diferencia entre un esclavo y una persona libre
(puedes usar el ejemplo si necesitas ayuda)

- Un esclavo es / tiene.....
- Un esclavo puede / no puede
- Una persona libre puede / no puede
- Una persona libre tiene.....
- En mi opinion.....

threaten (v)	repetitive (adj)	theft (n)	quiet (adj)
disability (n)	to throw down (v)	to shout (v)	to give a look (v)

In Summary

- Take action – a **tsunami starts with a little ripple!**
- CLiL can protect curriculum time – **protect your subject!**
- Drive change & policy – **more linguists in SLT!**

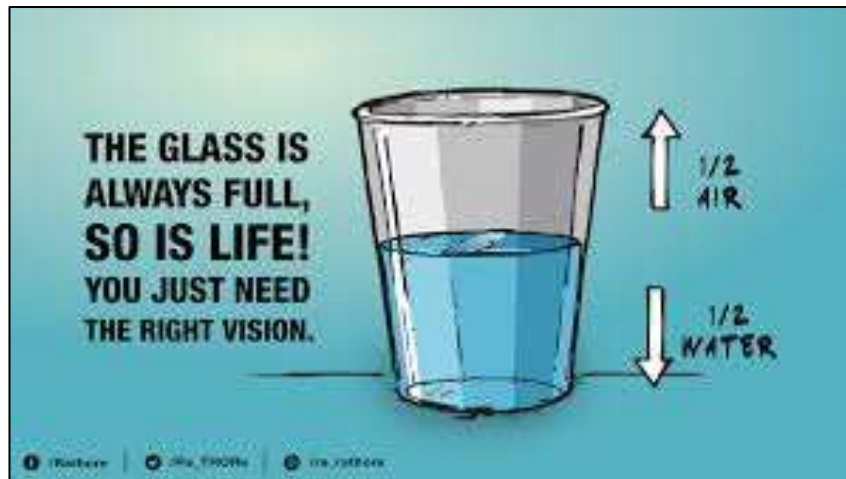


Queen K
Academy



Linguists are amazing!

- Linguists are not a dying breed – we are an advanced species!!!!!!



Queen Katharine
Academy

