

**EAGE**

EUROPEAN  
ASSOCIATION OF  
GEOSCIENTISTS &  
ENGINEERS



# EAGE Workshop on Naturally Fractured Reservoirs in Asia Pacific

27-28 APRIL 2022 • ONLINE

- **Programme**

[WWW.EAGE.ORG](http://WWW.EAGE.ORG)

MAIN SPONSOR

**BeicipFranlabAsia**



## TECHNICAL PROGRAMME COMMITTEE

Rosli Ismail (Co-chairman)	PETRONAS
Erlangga Septama (Co-chairman)	Pertamina Upstream Research and Technology Innovation
Alexander Kolupaev	Beicip-Franlab Asia
Afifi Aznan	Beicip-Franlab Asia
Prof. Stephan K. Matthai	The University of Melbourne
Dr. Sadegh Asadi	Baker Hughes
Riky Hendrawan	PT Pertamina Hulu Energi
Budi Permana	ConocoPhillips

## VIRTUAL SPONSOR

EAGE appreciates the continuous support of the virtual sponsor:

### Main Sponsor



Established in April 2013, Beicip-Franlab Asia (formerly known as BeicipTecsol) is an equity joint-venture entity in between Beicip-Franlab (Paris), PBQ Oilfield (Dubai) and Malaysian partners. Based in Kuala Lumpur, Beicip-Franlab Asia (BFA) provides best-in-class consultancy solutions, software, support and assistance covering conventional and non-conventional exploration, reservoir characterization, enhanced oil recovery reservoir management, field development, production optimization, process, and economics. In a glance, BFA is a newly established Asia Technology Hub of Beicip-Franlab Global, having more than 25 experts constitutes the backbone of the company's structure and competence, supported by more than 250 specialists in the headquarters. BFA is the Centre of E&P Technology Excellence that supports the regional market for IPEN Technology portfolio, having presence in Jakarta, Bangkok, Brunei, Singapore, Vietnam, Pakistan, Australia, and New Zealand.

## GENERAL INFORMATION

### Accessing the Virtual Portal

Delegates will receive the login credentials containing the portal URL and unique password which can only be used by registered delegates 4 days prior to the event. All attendees are advised to follow the event guidelines for optimal event experience.

### Workshop Abstracts

Digital abstracts will be made available on the virtual portal under each session and it will also be made available on EarthDoc.

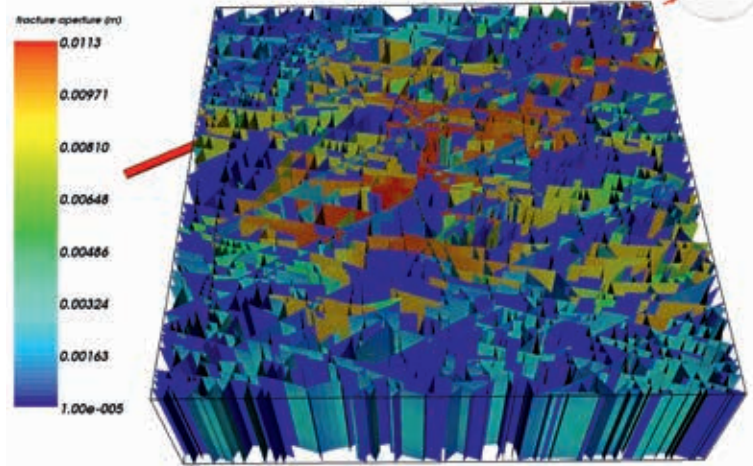
### EAGE Live Support

Should delegates face any issue during the event days, click on "Support" tab on the Virtual Lobby.

### Photo and Video Regulations

EAGE strives to bring you the greatest and latest of scientific and technical advances. Due to the importance of the technical content, EAGE upholds a photography and videography policy, in an endeavor to protect these leading-edge technologies.

Photography and video/audio recording of any kind are strictly prohibited in the technical sessions.



## WORKSHOP HIGHLIGHTS

### Day 1: Wednesday, 27 April 2022



**Opening Address**  
Shinta Damayanti  
Division Head, Exploration Planning  
*SKK Migas*



**Keynote Address 1**  
Yuzaini Yusof  
President Director  
*PETRONAS Indonesia*



**Keynote Address 2**  
Prof. Stephan K. Matthai  
Chair, Reservoir Engineering  
*The University of Melbourne*



**Keynote Address 3**  
Luca Micarelli  
Global Fracture Expert  
*Beicip-Franlab*

### Day 2: Thursday, 28 April 2022



**Keynote Address 4**  
Arya Disiyona  
Sr. Manager Gas Field Development  
*SKK Migas*



**Keynote Address 5**  
Prof. Ir. Benyamin Sapiie  
Head, Geodynamic and Sedimentology  
Research Group FITB  
*Institut Teknologi Bandung*



**Keynote Address 6**  
Dr. Pierre-Olivier Bruna  
Assistant Professor  
*TU Delft*

## TECHNICAL PROGRAMME

(The programme is following Jakarta Local Time (UTC+7) . The programme is confirmed as of publishing date and may be subject to change without prior notice.

### Oral Presentations | Wednesday 27 April 2022

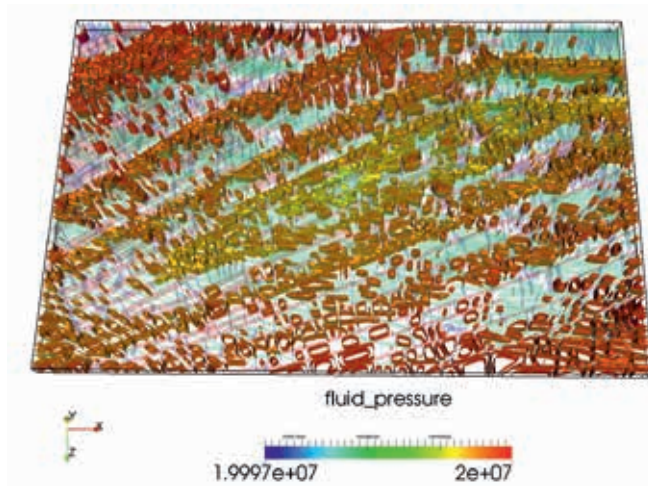
DAY 1	
<b>Opening Remarks</b>	
12:00	<b>Welcome Address by Co-chairperson</b> - E. Septama <sup>1*</sup> <sup>1</sup> Pertamina
12:10	<b>Opening Address</b> - S. Damayanti <sup>1*</sup> <sup>1</sup> SKK Migas
12:20	<b>Keynote Address 1: TBA</b> - Y.Yusof <sup>1*</sup> <sup>1</sup> PETRONAS
12:50	<b>Keynote Address 2: Modeling and Simulation of Vietnamese Basement Reservoirs</b> - S.K.Matthai <sup>1*</sup> <sup>1</sup> The University of Melbourne
13:20 <b>Session Break</b>	
<b>Session 1: Reservoir Modelling</b> Session Chairs: S.K. Matthai (The University of Melbourne) & B.R.Permana (ConocoPhillips)	
13:40	<b>9. Net Pore Volume Estimation in a Naturally Fractured Basement Reservoirs: A Case Study in an Indonesian Basin</b> - P. Monalia <sup>1*</sup> , S.K. Ong <sup>2</sup> , T. Kurniawan <sup>2</sup> , R. Alai <sup>2</sup> , R.K. Pratama <sup>1</sup> , J.I. Nasir <sup>2</sup> <sup>1</sup> PETRONAS Carigali Indonesia Operation; <sup>2</sup> PETRONAS Carigali Sdn. Bhd.
14:05	<b>4. Automatic Sketch-guided Workflow to Create Discrete Fracture Networks</b> - A. Tertois <sup>1*</sup> <sup>1</sup> Emerson
14:30	<b>5. The Geological, Geophysics, and Geomechanics Input to Model DFN in Geothermal Reservoir</b> - M. Ikhwan <sup>1*</sup> <sup>1</sup> Pertamina Geothermal Energy
14:55 <b>Session Break</b>	
<b>Session 2: Increasing Recovery from Naturally Fractured Reservoirs</b> Session Chairs: D. Halinda (Pertamina) & S.K. Matthai (The University of Melbourne)	
15:10	<b>Keynote Address 3: Maximising Fractured Asset through Integrated Data Driven Workflow</b> - L. Micarelli <sup>1*</sup> <sup>1</sup> Beicip-Franlab
15:40	<b>14.Pore-scale Study of Fracture Flow and Matrix Imbibition</b> - M. Farhadzadeh <sup>1*</sup> , A.A. Eftekhari <sup>1</sup> , H. M. Nick <sup>1</sup> <sup>1</sup> Danish Hydrocarbon Research and Technology Centre, Technical University of Denmark
16:05	<b>15.The Relationship Between Stress And Fracture Characteristic And Their Impact To Reservoir Productivity In Jatibarang Field, Jatibarang Sub-Basin, West Java, Indonesia</b> - P.R. Putra <sup>1*</sup> , A. Sugiarto <sup>2</sup> , M. Chandra <sup>3</sup> <sup>1</sup> PT Pertamina EP; <sup>2</sup> NV Exploration-PHE; <sup>3</sup> Upstream Innovation-PHE
16:30	<b>16. A Cost-Effective Matrix Acidizing Workflow in Openhole Tight Carbonate Mishrif Formation of West Kuwait</b> - A. Salem <sup>1</sup> , M. Patra <sup>2</sup> , A. Abu-Eida <sup>2</sup> , S. Al-Sabea <sup>2</sup> , M. AlEidi <sup>2*</sup> , K. Badrawy <sup>1</sup> , L. Peiwu <sup>1</sup> , V. Pochetnyy <sup>1</sup> , A. Baidas <sup>1</sup> <sup>1</sup> Schlumberger; <sup>2</sup> Kuwait Oil Company
16:55	<b>Closing Day 1 by Co-chairperson</b> - R. Ismail <sup>1*</sup> <sup>1</sup> PETRONAS
17:05	<b>End of Day 1</b>

### Oral Presentations | Thursday 28 April 2022

DAY 2	
12:00	<b>Welcome Address by Co-chairperson</b> - E. Septama <sup>1*</sup> <sup>1</sup> Pertamina
12:10	<b>Keynote Address 4: Key Considerations on Fracture Basement Characterization and Development</b> - A. Disiyona <sup>1*</sup> <sup>1</sup> SKK Migas
12:40	<b>Keynote Address 5: Challenges and Pitfalls of Characterization Fractured Basement Reservoir in The Western Indonesia Region</b> - B. Sapiie <sup>1*</sup> <sup>1</sup> Institut Teknologi Bandung
13:10 <b>Session Break</b>	
<b>Session 3: Fractured Reservoir Characterization</b> Session Chairs: B.R. Permana (ConocoPhillips) & S. Asadi (Baker Hughes)	
13:30	<b>13. Breakthrough in Fracture Characterization Using Integrated Advanced Acoustics and Borehole Geology Workflow in Tight Reservoirs</b> - R. Lamali <sup>1*</sup> , N. Bendali Amor <sup>1</sup> , K. Kecili <sup>1</sup> , D. Rezig <sup>1</sup> , H. Hadjarab <sup>1</sup> , M. Kelkoul <sup>1</sup> , Y. Boudiba <sup>1</sup> , F. Artebasse <sup>2</sup> , A. Benmerabet <sup>2</sup> , L. Belaifa <sup>2</sup> <sup>1</sup> Schlumberger Oilfield Services Company; <sup>2</sup> Sonatrach National Hydrocarbon Company
13:55	<b>10. Uncertainty Reduction of Fracture Permeability Based on a Comprehensive Bayesian Framework</b> - Z. Lan <sup>1</sup> , J. Fang <sup>1*</sup> <sup>1</sup> China University of Geosciences
14:20	<b>11. Integrating Seismic and Log Data for Mapping Fracture Intensity Distribution: Case Study in Tambun Field, Pertamina EP</b> - T. Meidiana <sup>1*</sup> , T. Handayani <sup>1</sup> , A. Trisnasih <sup>1</sup> , Y. Hartono <sup>1</sup> , A. Dzulfikar R. <sup>1</sup> <sup>1</sup> Pertamina EP; <sup>2</sup> Pertamina EP Cepu (PEPC)
14:45	<b>7. Basement Reservoir Potential of South Palembang Sub-Basin</b> - S. Syefriyandi <sup>1*</sup> , M. Alfatih Syaifurrahman <sup>1</sup> , A. Inabuy <sup>1</sup> , M. Mirza <sup>1</sup> , F. Nashir Ahmad <sup>2</sup> , R. Santika Riadi <sup>3</sup> <sup>1</sup> KSO Indrillco Hulu Energy; <sup>2</sup> PT. Pertamina Hulu Rokan; <sup>3</sup> PT. Pertamina Hulu Indonesia
15:10 <b>Session Break</b>	
<b>Session 4: E&amp;P Case Studies</b> Session Chairs: A.Aznan (Beicip-Franlab Asia) & P.D.Wardaya (Pertamina)	
15:25	<b>Keynote Address 6: From Outcrops to Models, Some Innovative Workflows to Predict Fracture Network Geometry and Flow Efficiency</b> - P.O.Bruna <sup>1*</sup> <sup>1</sup> TU Delft
15:55	<b>12. A New Carbonate Basement Fracture Play Type Identification in South Sumatra Basin from Integrated Subsurface Approach</b> - R. Tampubolon <sup>1*</sup> , T.Y. Sitingjak <sup>1</sup> , V. Ruliansatri <sup>1</sup> , R. Imran <sup>1</sup> , C. Asri <sup>1</sup> , B.J. Raharjo <sup>1</sup> <sup>1</sup> Odira Energy Karang Agung
16:20	<b>17. Well-Centric Geomechanical Modelling and Fracture Network Analysis to Characterise Fracture Permeability and Identify Critically Stressed Natural Fractures and Best Well Orientation</b> - S. Asadi <sup>1*</sup> , A. White <sup>1</sup> <sup>1</sup> Baker Hughes
16:45	<b>8. Significant Exploration Breakthrough and Intergrated Fractured Buried-hill Reservoirs Characterization in Huizhou sag, Pearl River Mouth Basin</b> - J. Liu <sup>1,2*</sup> , G.C. Wu <sup>1</sup> , R.J. Chen <sup>2</sup> , X.M. Liu <sup>2</sup> , L.Y. He <sup>2</sup> <sup>1</sup> School of Geosciences,China University of Petroleum (East China); <sup>2</sup> CNOOC China Limited, Shenzhen Branch
17:10	<b>Closing by Co-Chairperson</b> - E. Septama <sup>1*</sup> <sup>1</sup> Pertamina
17:20	<b>End of Workshop</b>

## IMPORTANT DATES

Event Date	27-28 April 2022
Online Registration Deadline	28 April 2022



## REGISTRATION

REGISTERED AND PAID	
EAGE Green Member	€ 300
EAGE Member (Gold/Silver/Bronze)	€ 250
EAGE Platinum Member	€ 200
Non-Member	€ 380
EAGE Green Student Member	€ 150
EAGE Student Member	€ 125
Student Non- Member	€ 175

- Members please note: To qualify for the member registration fee, your EAGE membership dues for 2021 must have been paid and confirmed. The processing time for membership applications or renewals is 10 working days.
- To qualify for the reduced student registration fee:
  - Students must be enrolled in a full time study programme at a recognized university or institute
  - The registration must be accompanied by a copy of a student ID card and/or official proof of enrolment
- The Non-member fee includes EAGE membership for the remainder of 2022.
- This membership will be activated shortly after the event. Student Non-members cannot be older than 34 years of age (when registering).

# See you Online!

**EUROPE OFFICE**  
+31 88 995 5055  
EAGE@EAGE.ORG

**RUSSIA & CIS OFFICE**  
+7 495 640 2008  
MOSCOW@EAGE.ORG

**MIDDLE EAST/AFRICA OFFICE**  
+971 4 369 3897  
MIDDLE\_EAST@EAGE.ORG

**ASIA PACIFIC OFFICE**  
+60 3 272 201 40  
ASIAPACIFIC@EAGE.ORG

**LATIN AMERICA OFFICE**  
+57 1 7449566 EXT 116  
AMERICAS@EAGE.ORG

ASIA PACIFIC OFFICE • UOA CENTRE • 50450 KUALA LUMPUR • MALAYSIA • +60 3 272 201 40 • ASIAPACIFIC@EAGE.ORG

[www.eage.org](http://www.eage.org)



join us on social media!