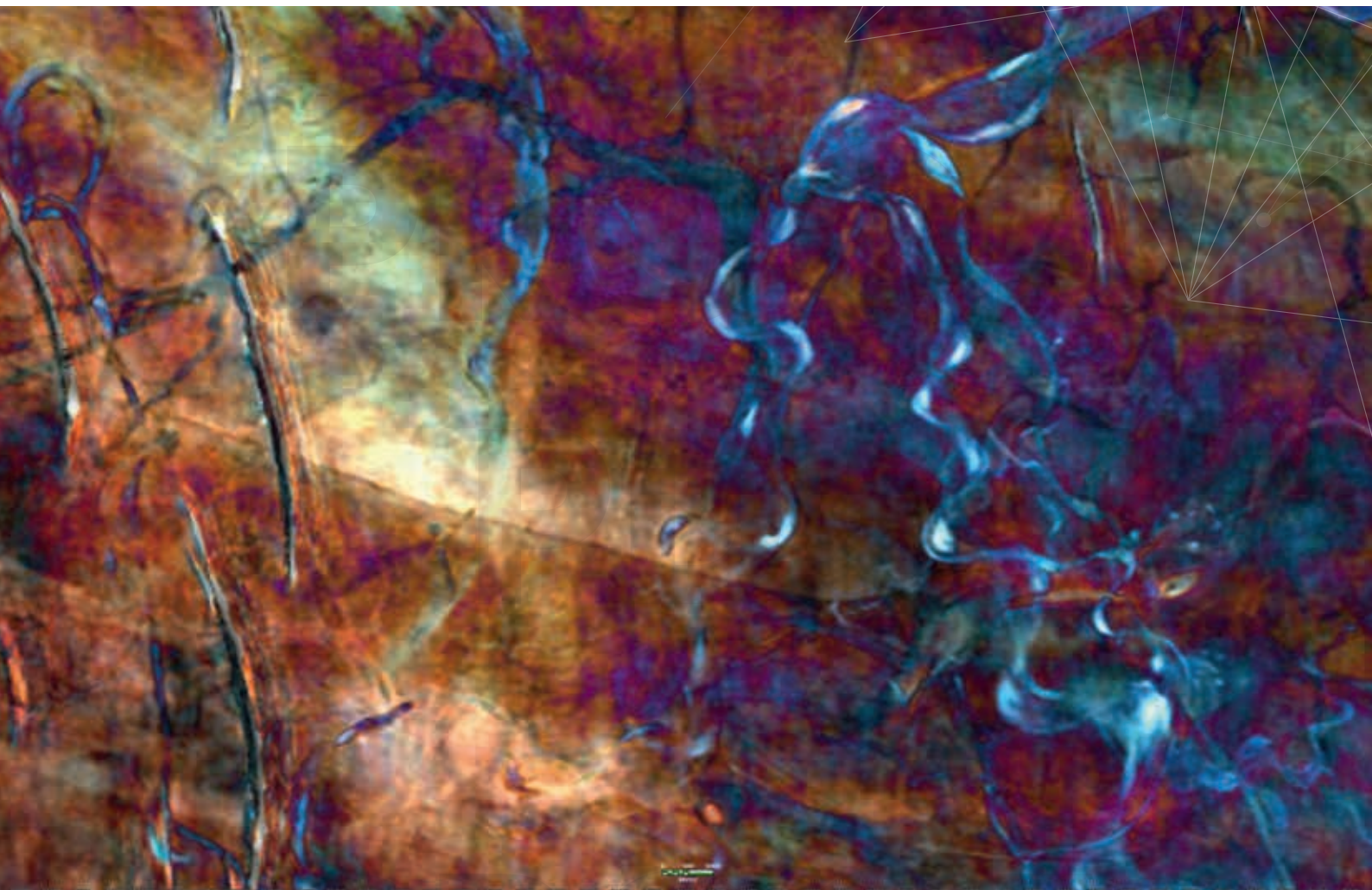


EAGE

EUROPEAN
ASSOCIATION OF
GEOSCIENTISTS &
ENGINEERS

APGCE Curtain
Raiser Series

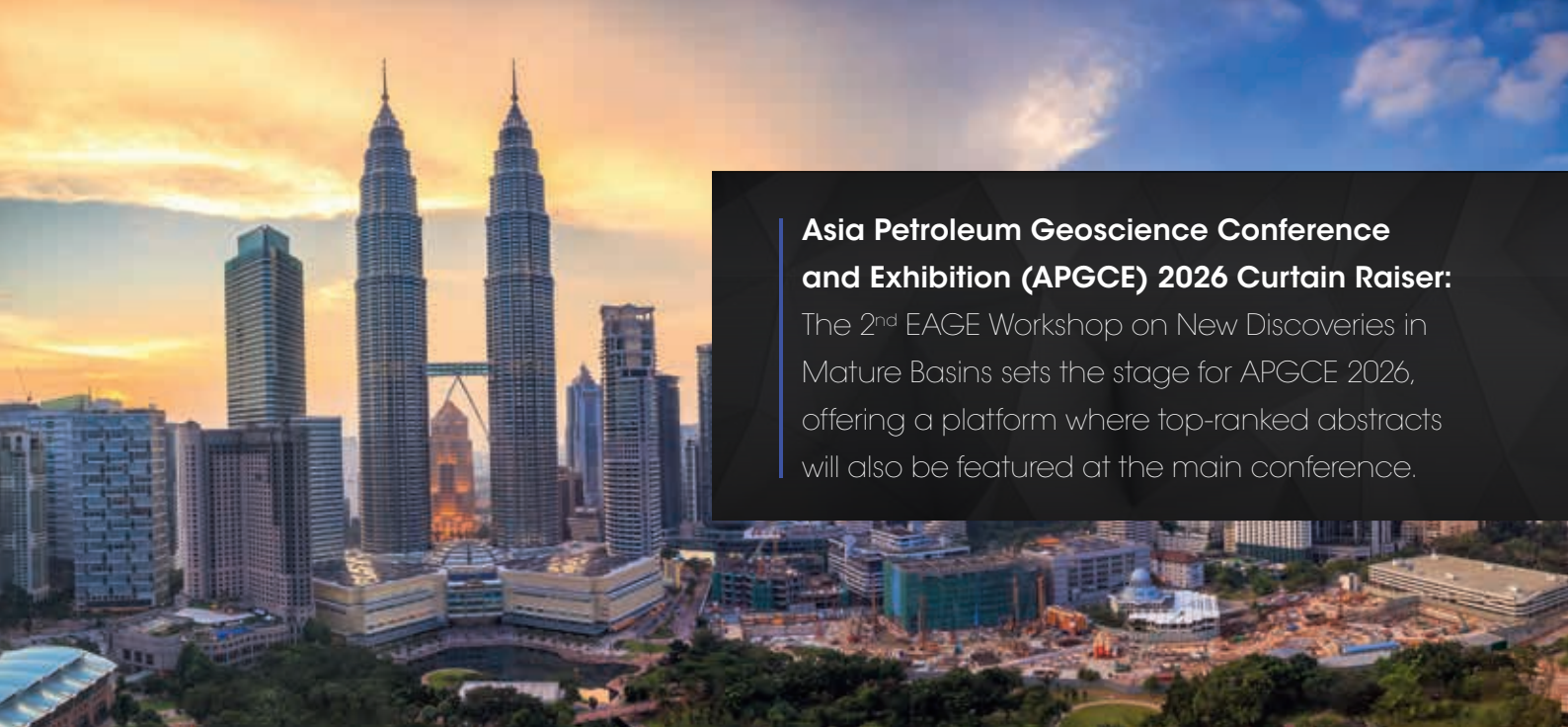


2nd EAGE Workshop on New Discoveries in Mature Basins

28-29 APRIL 2026 • KUALA LUMPUR, MALAYSIA

- **First Announcement**

WWW.EAGE.ORG



Asia Petroleum Geoscience Conference and Exhibition (APGCE) 2026 Curtain Raiser:

The 2nd EAGE Workshop on New Discoveries in Mature Basins sets the stage for APGCE 2026, offering a platform where top-ranked abstracts will also be featured at the main conference.

OVERVIEW

Recent years have seen a notable resurgence in petroleum exploration within mature basins globally, with particular success observed in regions such as Southeast Asia. These established provinces offer inherent advantages, including well-developed infrastructure and a wealth of accumulated geoscience and engineering data and expertise. However, realizing the significant untapped potential within these mature areas necessitates deploying innovative solutions. Yet, unlocking their untapped potential requires more than traditional methods.

It demands a fusion of Artificial Intelligence and Machine Learning AI/ML with deep learning enabled by HPC technology to uncover overlooked opportunities and optimize development strategies. As Dolson et al. (2018) aptly state, "Frontier and mature basin exploration requires different mindsets, skills, and tools. Petroleum systems analysis, depth to oil and gas windows, pressures, and basin evolution, including paleogeographic reconstructions, are essential in Frontier areas.

Mature basins have abundant test data, hydrocarbon shows, pressures, logs, and other information, which must be culled through and analyzed to find anomalous oil shows, compartmentalized reservoirs, or bypassed pay. The work is data and time-intensive but can yield substantial new reserves when coupled with new 3D seismic data, a re-look at cores, and better integration." This underscores the critical need for meticulous data analysis and integration of new technologies to identify overlooked opportunities.

The 2nd EAGE Workshop on New Discoveries in Mature Basins aims to convene leading experts from diverse geoscience and petroleum engineering disciplines.

The primary objective is to facilitate the exchange of knowledge and insights regarding how advancements in technology and strategic thinking have led to significant exploration successes, thereby revitalizing well-established petroleum provinces.

TECHNICAL COMMITTEE

Nurmaliza Tukimin (Chairperson)	PETRONAS
Hafizan Wahab (Co-Chairperson)	PETRONAS
Roy Kittrell	Bell Geospace
Dk. Rabiuladawiyah	Brunei Shell Petroleum
Kasyful Qaedi	ENEOS Xplora Malaysia Limited
Sharon Khor Suyin	ExxonMobil E&P Malaysia Inc
Hirofumi Kobayashi	INPEX Malaysia E&P
Komang Andika	Pertamina
Azwa Jannah Bt Abu Bakar	PETRONAS
Nur Qistina Bt Salim	PETRONAS
Bui Viet Dung	PetroVietnam
Liew Guo Hong	PTTEP
Dr Clare Barker-White	S&P Global
Alex Karvelas	SLB
Karyna Rodriguez	Searcher Seismic
Dr Pierre Eliet	Seascope Energy Asia plc
Matthew Choo	Seascope Energy Asia plc
William Ngu	Shell
Alexandre Mazard	TOTALEnergies
Hannan Abdul Latib	Viridien
Jarrad Grahame	Viridien
Suraya Tulot	Welligence Energy Analytics
Dylan Mair	Wood Mackenzie

CALL FOR ABSTRACTS

The Call for Abstracts for the 2nd EAGE Workshop on New Discoveries in Mature Basins is open now! The submission deadline is set to **Tuesday, 6 January 2026, 2359 hrs (GMT+8)**. After this date, it is no longer possible to add submissions. Please scan the QR code to visit the event website and learn more information on abstract submission.



TOPICS

1. **Basin History Analysis:** Case studies examining creaming curve breaks versus de-risking methodologies and technologies.
2. **Portfolio Rejuvenation:** Exploration of successful strategies for revitalizing portfolios in mature areas.
3. **Complex Trap Unlocking:** Geological, geophysical, and operational approaches to identifying and exploiting structural, stratigraphic, and combined complex traps.
4. **Past Venture Analysis:** Efficient techniques for accelerating the learning curve in mature basins, enabling geoscientists to focus on bypassed opportunities.
5. **Innovative Exploration and Development Solutions:** Discussions on solutions using (AI/ML) for stranded resources, CO₂ handling, deepwater challenges, and cluster systems.
6. **Near-Field Exploration:** Strategies and case studies in the pursuit of hydrocarbon reserves in close proximity to existing infrastructure, especially those relating to wells.
7. **High Pressure/High Temperature (HP/HT) Case Studies:** Examination of new developments and operational insights in HP/HT environments.
8. **Multiphysics and Deep Seismic:** Redefining basin boundaries and architectural understanding through advanced seismic imaging.
9. **Petroleum System Modeling (PSM):** Exploration of new concepts related to temperature-time histories, charge, fractionation, fluid dynamics, and tracers within petroleum systems.
10. **Uncovering Missed Opportunities:** Geophysical uplift, such as seismic imaging advancements, exploration objectives have often led to valuable reserves being overlooked. Historical cases show how a focus on oil bypassed significant shallower gas, highlighting the need for retrospective analysis to capture similar opportunities in the future.
11. **Stepping Out of Known Plays:** Exploring beyond established targets requires new strategies and

technologies. Successful case studies demonstrate how deeper and unconventional objectives can be pursued using advanced geological, geophysical, and risk assessment techniques.

12. **Commercial Challenges vs Advantages:** new idea or innovative commercial concept to drive exploration in mature basins includes (but not limited to); development concept, surface geoscience concept, terms & policy, lever on zero emissions, tax/tariffs advantages or challenges, co-development etc.

SPONSORSHIP

Why Become a Sponsor?

This event is a great opportunity to obtain the latest information on developments in the industry and expand your network and exchange ideas, meanwhile sponsorship enhances your visibility and corporate image before an international audience. Companies are invited to participate in the sponsorship of the **2nd EAGE Workshop on New Discoveries in Mature Basins** and achieve high visibility in a qualitative and uncluttered environment.

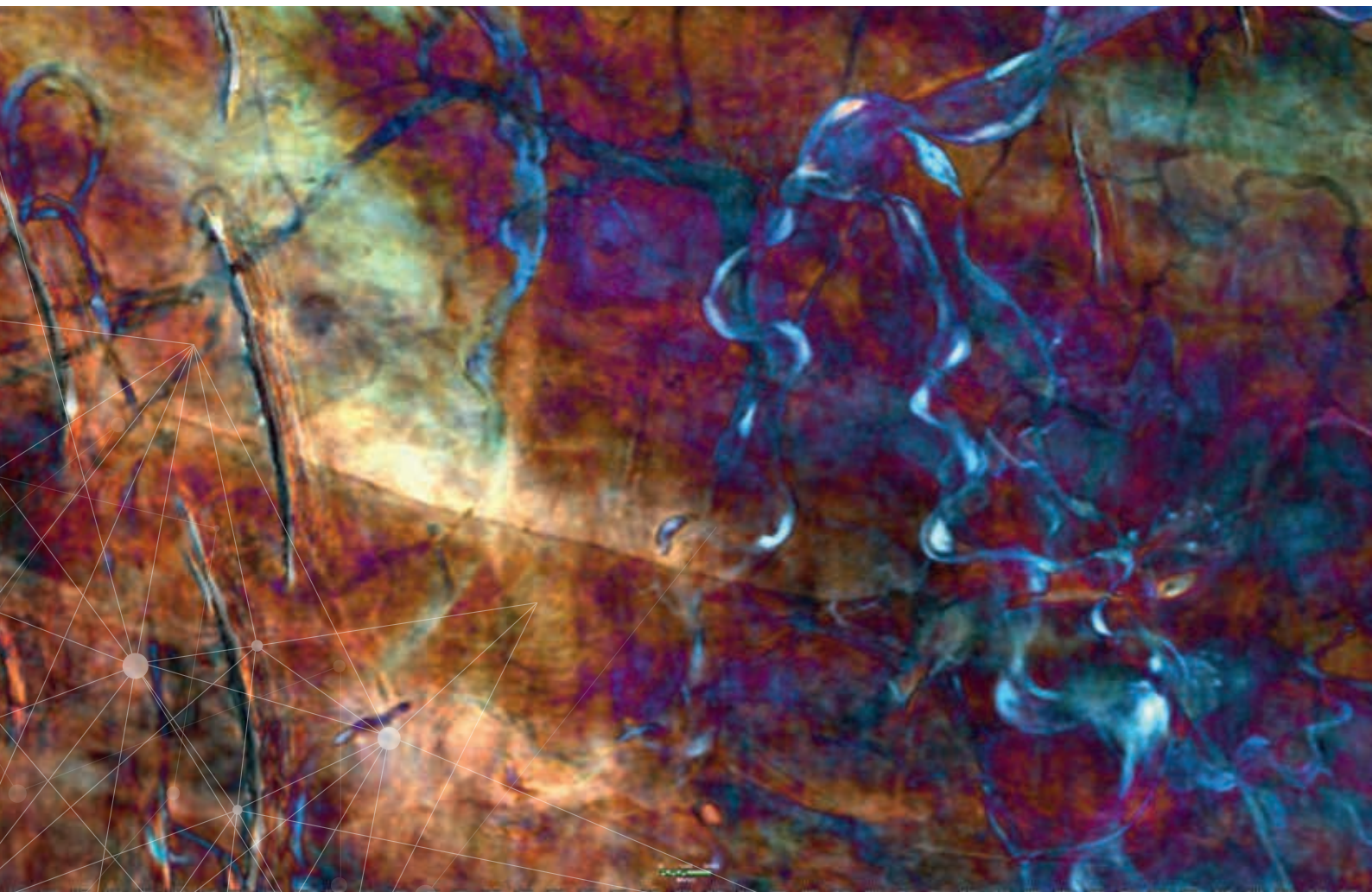
The programme offers a diverse investment that's sure to help you reach your target audience.

Sponsoring or exhibiting at the event will enable you to:

- Increase your visibility before an international audience
- Enhance your corporate image
- Reach an influential, exclusive audience
- Break through the media clutter
- Associate your company with EAGE – the world's truly multi-disciplinary geoscience and engineering society

For information on sponsorship packages, please contact EAGE Asia Pacific office at asiapacific@eage.org or call us at +603 2722 0140.





EUROPE OFFICE
+31 88 995 5055
EAGE@EAGE.ORG

MIDDLE EAST/AFRICA OFFICE
+971 4 369 3897
MIDDLE_EAST@EAGE.ORG

ASIA PACIFIC OFFICE
+60 3 272 201 40
ASIAPACIFIC@EAGE.ORG

AMERICAS OFFICE
+57 310 8610709
AMERICAS@EAGE.ORG

HEAD OFFICE • KOSTERIJLAND 48 • 3981 AJ BUNNIK • THE NETHERLANDS • +31 88 995 5055 • EAGE@EAGE.ORG

www.eage.org



join us on social media!