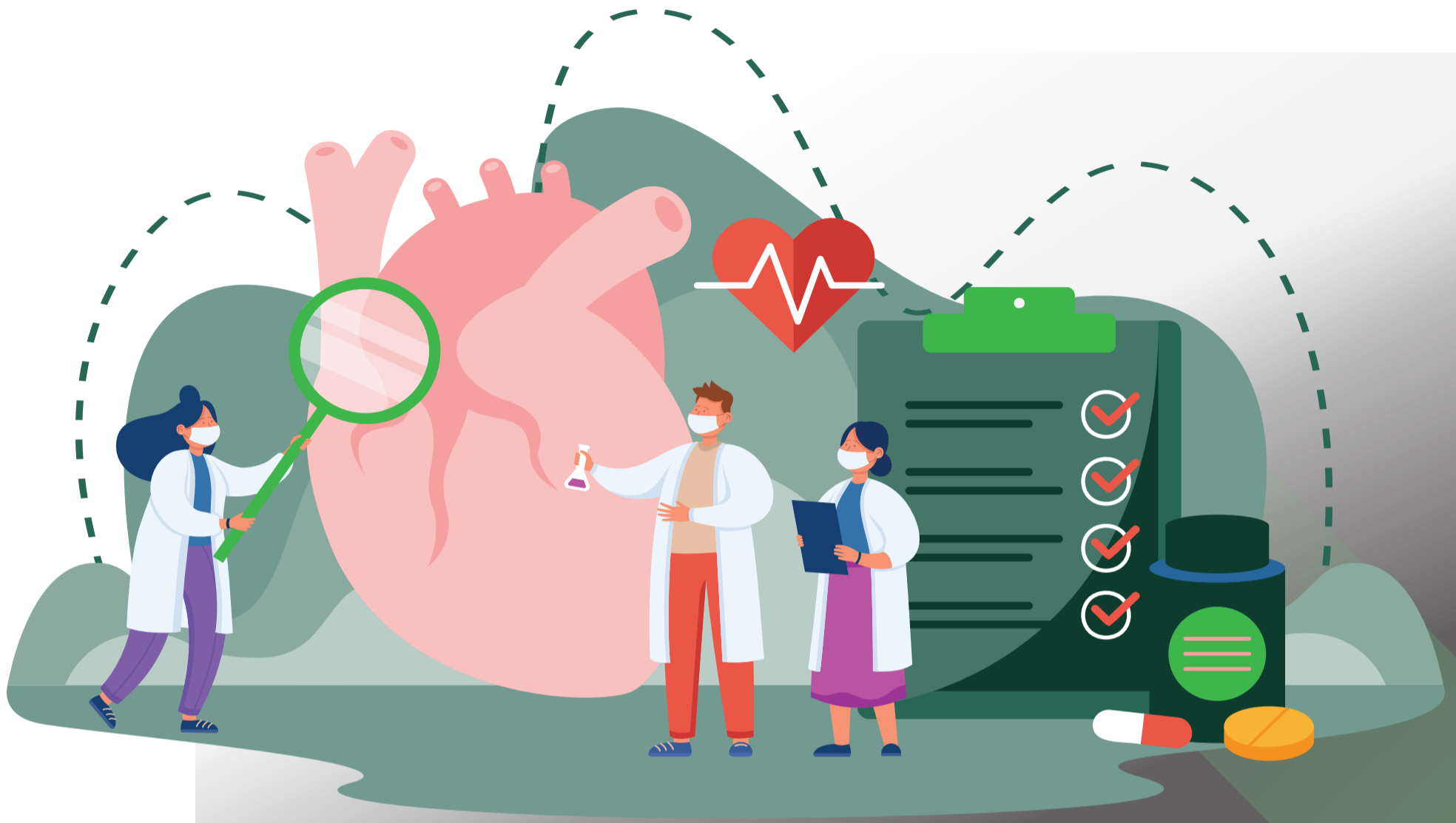


**ESCI**  
EUROPEAN SOCIETY FOR  
CLINICAL INVESTIGATION

# Annual Scientific Meeting

3-5 June 2026 Lisbon, Portugal



## Pre-meeting Courses

From Prediction to Clinical Practice: Tools and Impact of Cardiovascular Risk Modeling

- Organizers:

**Nurulamin Noor** - University of Cambridge, United Kingdom

**Christos Kourek** - Evangelismos General Hospital of Athens, Greece

**Deeksha Malhan** - MSH Medical School Hamburg, Germany

**Aldo Bonaventura** - Medical Center, Ospedale di Circolo e Fondazione Macchi, Varese, Italy

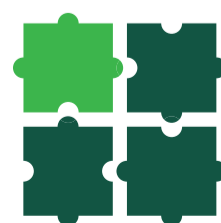
**Harshitha Shanmugam** - Department of Precision and Regenerative Medicine & Ionian Area - DiMePre-J Policlinic Hospital, University of Bari "Aldo Moro", Italy

**Jamol Uzokov** - Republican Specialized Scientific Practical Medical Center of Therapy and Medical Rehabilitation, Tashkent, Uzbekistan

**Felippe Henrique Zuccolotto dos Reis** - Unilabs, Faro, Portugal

- More information and contact [esci@umcutrecht.nl](mailto:esci@umcutrecht.nl)

- Travel Grant applications, [www.esci.eu.com](http://www.esci.eu.com)



**ESCI**  
EUROPEAN SOCIETY FOR  
CLINICAL INVESTIGATION

Bolognalaan 34  
3584 CJ Utrecht  
The Netherlands

Phone +31 88 7558787

[esci@umcutrecht.nl](mailto:esci@umcutrecht.nl)  
[www.esci.eu.com](http://www.esci.eu.com)

[www.esci.eu.com](http://www.esci.eu.com)