

**10th ESA INTERNATIONAL WORKSHOP ON TRACKING, TELEMETRY AND COMMAND SYSTEMS
FOR SPACE APPLICATIONS (TT&C 2025)**

**25 - 28 November 2025
ESA/ESOC, Darmstadt, Germany**

Principal Author Name⁽¹⁾, Co-Author Name⁽¹⁾, Co-Author Name⁽²⁾

*⁽¹⁾Affiliation
Complete mailing address (including country)
mailing address continued
Email:*

*⁽²⁾Affiliation
Complete mailing address (including country)
mailing address continued
Email:*

INTRODUCTION

The proceedings for **TT&C 2025** will be available to all participants. The following instructions provide guidelines for preparing the (non-IEEE) paper electronic format. **Each submission should resemble these instruction sheets in format and style when completed.** Please read all instructions thoroughly to avoid errors that could result in your paper(s) being omitted from publication.

SUBMISSION REQUIREMENTS

Publication of a paper in the proceedings of **TT&C 2025** is contingent upon the receipt of the electronic version of the paper in **PDF format by 30 September 2025.**

Papers are to be delivered through the website portal.

Contact Details

If you have any questions about preparing your paper, please contact the editor:

ESA Conference Bureau

Reference: Proceeding Editor TT&C 2025

Email: esaconferencebureau@atpi.com

All other questions concerning conference arrangements, fees, accommodation, etc., should also be addressed to the ESA Conference Bureau.

PAPER PREPARATION

There is a limit of 8 pages on the maximum number of pages per paper. Prepare your paper using the following guidelines:
Margins: In order to achieve a paper-format independent print area of 17x23.4 cm (6.7x9.21 inches), please adjust your word processor to the following margins shown in Table 1.

Table 1. Recommended margins for the paper

Paper format:	US LETTER		A4	
Unit:	Inch	cm	inch	cm
Margin LEFT	0.90	2.29	0.79	2.00
Margin RIGHT	0.90	2.29	0.79	2.00
Margin TOP	1.00	2.54	1.00	2.54
Margin BOTTOM	0.79	2.00	1.48	3.76
PRINT Area Width	6.70	17.02	6.69	17.00
PRINT Area Height	9.21	23.39	9.21	23.40

Text: The text shall be organised in a **single column**, left and right justified. Use single spacing in the body of the text and double spacing between sections.

Font:	Text:	Times New Roman
	Variable:	Times New Roman italic
	Symbol:	True Type Symbol font
Size:	Paper title:	12 pt bold (TITLE)
	Author(s):	10 pt bold (Author)
	Affiliation(s):	10 pt bold italic (Affiliation)
	Normal text:	10 pt (regular text)
	Text in tables:	9 pt
	Symbols:	12 pt ($\Omega \cong \phi$)
	Sub/super-script:	7 pt (x^y)
Tabs:	Set the first three levels of tabs at 1 cm (0.39”), 2 cm (0.79”) and 3 cm (1.18”). Set a right tab stop at 17 cm (6.69”) for “flush-right” adjustment of equation numbers. Set a centre tab at 8.5 cm (3.55”).	
Headings:	Chapter headings should be left aligned, double-spaced (one blank line before and after the heading) and printed in bold “ALL CAPS”. Sub-headings should be left aligned and double-spaced in bold text with the main words capitalised (“Title Case”). Sub-sub-heads are left aligned in italic font with the main words capitalised (“Title Case”).	

Header/footer: The use of header/footer or footnotes is not recommended. Only ‘TT&C 2022’ shall appear as a footer as appears in this document

Title and Author Affiliation

The paper title, author(s) name(s), affiliation, complete mailing address and email should be centred at the top of the first page using the font as indicated above. If there are several authors, the complete affiliation should be given for each of them using superscript⁽¹⁾ in the authors⁽²⁾ list⁽³⁾ to refer to them.

Equations

Should be centred and number equations consecutively with equation numbers in parentheses flush with the right margin. To make your equations more compact, you may use the solidus (/), the exp function, or appropriate exponents. Italicise Roman and Greek symbols for quantities and variables. Use a long dash rather than a hyphen for a minus sign. Use parentheses to avoid ambiguities in denominators. Punctuate equations with commas or periods when they are part of a sentence. Be sure that the symbols in your equation have been defined before the equation appears or immediately following. Use “(1)” not “Eq. (1)” nor “equation (1)” except at the beginning of a sentence, then use “Equation (1) is...”. An example for an equation is:

$$T_s = \frac{T_b}{1 + (\lambda T_b / \alpha) \ln \varepsilon} \quad (1)$$

Figures and Tables

Position figures and tables at the top and bottom of pages. Figure captions should be below the figures; table captions should be above the tables. Avoid placing figures and tables before first mentioned in the text. Use the abbreviation “Fig.1,” even at the beginning of a sentence. All images must be embedded into your document. The type of graphics you include will affect the quality and size of your electronic paper.

An example for an image embedded in the document is given in Fig. 1. (Courtesy EUMETSAT)

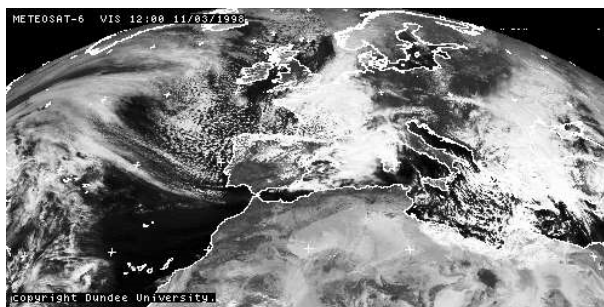


Fig. 1. Meteosat Visible channel showing clouds over Europe

Abbreviations and Acronyms

Define abbreviations and acronyms the first time they are used in text, even after they have been defined in the abstract. Abbreviations such as TT&C, TM, TC, ac and dc do not have to be defined. Do not use abbreviations in the title unless they are unavoidable.

Page Numbering

Do not number the electronic paper.

REFERENCES

Number citations consecutively in square brackets [1]. The sentence punctuation follows the brackets [2]. Refer simply to the reference number, as in [3]. Do not use “Ref.[3]” or “reference [3]” except at the beginning of a sentence: “Reference [3] was the first....” The title of the book or the name of the journal shall be typed in italic.

Give all authors’ names; do not use “et al” unless there are six authors or more. Papers that have not been published, even if they have been submitted for publication, should be cited as “unpublished” [4]. Papers that have been accepted for publication should be cited as “in press” [5]. For papers published in translation journals, please give the English citation first, followed by the original foreign-language citation [6].

Sample References

- [1] G. Eason, B. Noble, and I.N. Sneddon, “On certain integrals of Lipschitz-Hankel type involving products of Bessel functions,” *Phil. Trans.. Roy. Soc. London*, vol. A247, pp. 529-551, April 1955.
- [2] J. Clerk Maxwell, *A Treatise on Electricity and Magnetism*, 3rd ed., vol. 2. Oxford: Clarendon, pp. 68-73, 1892.
- [3] I.S. Jacobs and C.P. Bean, “Fine Particles, Thin Films and Exchange Anisotropy,” in *Magnetism*, vol. III. G.T. Rado and H. Suhl, Eds. New York: Academic, pp. 271-350, 1963.
- [4] K. Elissa, “Title of paper,” unpublished.
- [5] R. Nicole, “Title of Paper,” in press.
- [6] Y. Yorozu, M. Hirano, K. Oka, and Y. Tagawa, “Electron spectroscopy studies on magneto-optical media and plastic substrate interface,” *IEEE Transl. J. Magn. Japan*, vol. 2, pp. 740-741, August 1987.