



Reference:

N. Wagner, *Introduction and Welcome*, 6th ESA REACH Workshop, ESA ESTEC, Noordwijk, the Netherlands, 17th June 2025

Author affiliation:

Nicoletta Wagner, Head of Future Engineering Division, European Space Agency

Disclaimer:

Please note that all the information within is FYI and does not represent the opinion of the European Space Agency, unless stated otherwise. The materials may be downloaded, reproduced, distributed and/or used, totally or in part, provided that (i) the user acknowledges that the organisers and the presenters accept no responsibility and/or liability for any use made of the information; (ii) the user does not alter the integrity (underlying meaning / message(s)) of the information; and (iii) the author(s) is (are) acknowledged as the source: "Source: [insert author(s) and affiliation, 6th ESA REACH Workshop 2025]". In addition (iv) users shall comply with any additional referencing requirements (prior approval / consent, mode of quotation, etc.) as may be stated in the individual presentations. In case of doubt, please contact the author(s) of the presentation. For more information link to the workshop webpage: <https://atpi.eventsair.com/6th-esa-reach-workshop>

6th ESA REACH workshop – introduction & welcome

Nicoletta Wagner
Head of Future Engineering Division

17/06/2025

ESA UNCLASSIFIED – For ESA Official Use Only



EUROPE'S GATEWAY TO SPACE

WHAT

23 Member States, > 6000 workforce

WHY

Exploration and use of space for exclusively peaceful purposes

WHERE

HQ in Paris, 7 sites across Europe and a spaceport in French Guiana

HOW MUCH

€7.68 billion* = €12 per European per year



The infographic features a central circular arrangement of five pillars, each represented by a circular icon and a text label. The pillars are connected by a dashed line with arrows indicating a clockwise flow. The central text 'Strategy 2040' is prominently displayed in the middle of the circle.

- Inspire Europe**: Represented by a circular icon with a stylized 'E' and a lightbulb.
- Boost European Growth and Competitiveness**: Represented by a circular icon with a bar chart and an upward arrow.
- Strengthen European Autonomy and Resilience**: Represented by a circular icon with a compass rose.
- Explore and Discover**: Represented by a circular icon with a star.
- Protect our Planet and Climate**: Represented by a circular icon with a globe and a leaf.

The central text reads: **Strategy 2040**

ESTEC - the European Space Research and Technology Centre in Noordwijk, the Netherlands is the incubator for European space mission. Most ESA projects are *born* here and are guided through the various phases of development from here.



◀ ESTEC

Accelerating Europe's readiness for scalable, resilient, and competitive space

THE CHALLENGE BEHIND IT



- ✓ Europe must catch up on industrial scalability, as global investments and commercial space demand surge.
- ✓ Digital transformation and resilient supply chain are essential, requiring automation, smart factories and integrated industrial ecosystems to ensure global competitiveness
- ✓ Future space markets can only be captured through widespread adoption of innovative manufacturing solutions tailored for industrialization

OUR AMBITION



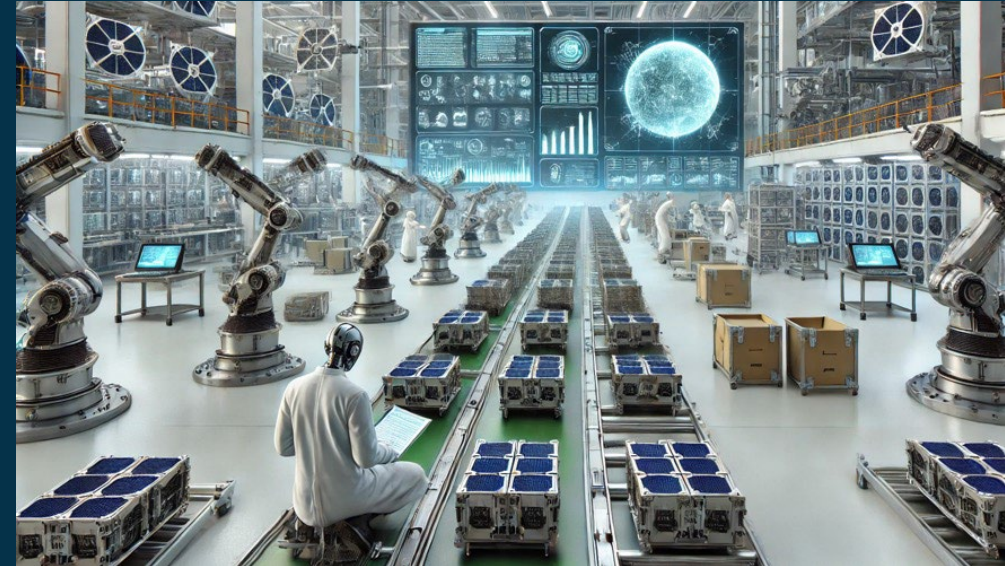
- ✓ Support industrialization and serialization
- ✓ Bridge technology maturity with production scalability
- ✓ Enhance competitiveness through automation, digitalization, and manufacturing maturity frameworks

OUR FOCUS



- ✓ From prototype to product
- ✓ Resilient Supply Chain
- ✓ From product to serial production

1. **Assessment and enhancement of Manufacturing Readiness Level (MRL)**
2. **Facilitate industrial production** - readiness for future space constellations
3. **Increase resilience of production processes** and lower production costs
4. **Establish resilient and autonomous supply chains**



The CoC is being set up in the new Future Engineering division within the Systems Department (TEC-S). It aims to support industries in industrialisation and serialisation.

Objectives

- Identify concrete use cases and industrial needs
- Map capabilities (system integrators, suppliers, testing facilities)
- Gather further ideas to guide ESA support actions and pilot projects
- Co-develop best practices, methods & tools for industrialization

Next steps

Open call: focused on 3 axes – “prototype to product”, “supply chain resilience” and “ design for serial production”

Launch survey: collection of needs across large and small players

Pilot actions: selected based on maturity, impact and scalability potential

Let's shape it together

We welcome your feedback, industrial insights and use cases.
Please reach out to me directly to share your ideas and explore
how to engage in shaping ESA's industrialization strategy

ReUSE! is an initiative of the ESA with the objective of:

- ✓ Ensuring best usage of existing means
- ✓ Environmentally friendly and economically viable re-use
- ✓ Reducing environmental impact associated with new construction
- ✓ Reducing time to market

ESA's asset availability platform called ReUSE! is available free-of-charge via the following link www.ReUSE.esa.int.

- The platform is on-line and accessible to externals since January 2025

Open for other programmes to use it



5th ESA REACH Workshop 2024



- The 5th workshop raised the interest of 90 participants from 3 continents, 12 countries.
- Executive summary as well as all presentations can be found on: <https://atpi.eventsair.com/esa-5th-reach-workshop>



Thank you for your attention

[TEC Motivation Montage 4K.mp4](#)

We TEC You to the Next Level

We are Proud to Enable ESA's Success