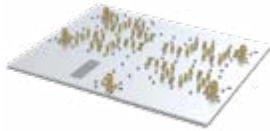




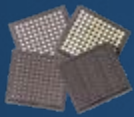
INNOVATION IS OUR HEART



AIR FILLED SUBSTRATE INTEGRATED WAVEGUIDE ASSEMBLIES



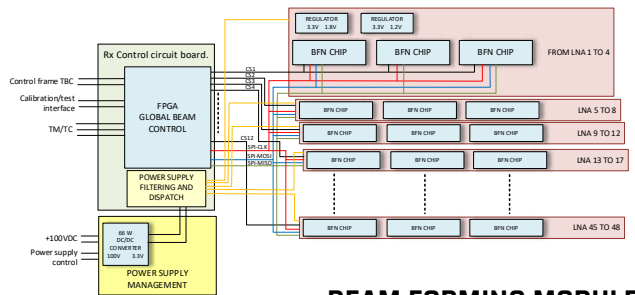
3D PRINTING



SEMICONDUCTORS AND MINIATURE FUNCTIONS



LTCC TECHNOLOGY



BEAM FORMING MODULES

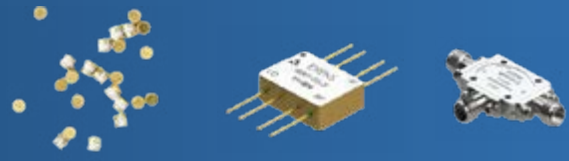


HIGH POWER FUNCTIONS INCLUDING SWITCH AND LIMITER WITH ELECTRONIC DRIVERS

A TRUSTED PARTNER IN SPACE ENVIRONMENT

DIES - DIODES - SMD & WAVEGUIDE LIMITERS - SPxT & DPxT SWITCH - MIXERS - IQ INTERMOD

- Space qualified cleanroom
- Microelectronic capabilities
- PIN diodes & CMOS capacitances ESA qualified
- Multipliers & tuning varactors ESA qualified
- High power waveguide & SMD limiters & switches
- UHF to Ku-band, power up to 2KW



ISOLATORS & CIRCULATORS - FERRITE SWITCH

- Space qualified cleanroom
- Miniature microstrip & SMD
- Compact coaxial & waveguide
- High power isolators & ferrite switch
- High performances & switch time < 1us
- VHF to V-band, power up to 1KW



WAVEGUIDE EQUIPMENT - ELECTROMECHANICAL WAVEGUIDE SWITCH

- Space qualified cleanroom
- Waveguide couplers, combiners & adaptors
- Electromechanical switch C & R types
- High performances & switch time < 500ms
- 3D printing waveguide assemblies
- C-band to V-band, power up to 5MW



FILTERS - AFSIW COMPONENTS & ASSEMBLIES

- Space qualified cleanroom
- Lumped, ceramic, air cavity, waveguide
- Miniaturized & low mass
- Multichannel filters
- AFSIW assemblies with active components
- VHF to Q-band, power up to 1MW

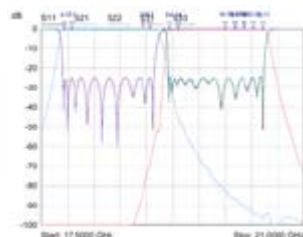
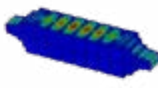
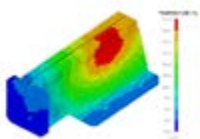
SUBSYSTEMS

- Space qualified cleanroom
- Assemblies of passive & active functions
- Integration of electronic drivers
- Coaxial, waveguide & SMD interface
- Qualified on ESA missions
- L to Ka-band



DESIGN, SUPPORT & TEST SERVICES

- Microwave design & simulation
- Technical analysis including reliability, multipactor, corona, etc.
- Project & product assurance management
- Microelectronic assembly & cabling
- Thermal vacuum & power handling test
- Multipactor, PIM & critical pressure test



JOIN OUR MAIN PARTNERS

