

FAR 2022 - EXHIBITION BROCHURE



Reference	FAR 2022 – Exhibition Brochure
Issue/Revision	V. 01 .
Date of Issue	06/08/2021



Table of Contents

1. Introduction 3

2. Conference Location 5

3. Exhibition 6

4. Floorplan 6

5. Exhibition Opening Hours 6

6. Setup and Dismantling Hours 7

7. Exhibition Application 7

8. Additional Orders 8

9. Shipping Materials 9

10. Annex 01 10

1. INTRODUCTION

The **2nd International Conference on Flight Vehicles, Aerothermodynamics and Re-entry Missions Engineering (FAR)** is an event organized by the European Space Agency (ESA) in conjunction with other global space Agencies and institutional partners, including the Deutsches Zentrum für Luft und Raumfahrt (DLR), the National Aeronautics and Space Administration (NASA), the Japan Aerospace Exploration Agency (JAXA), the the Centre National d'Études Spatiales (CNES) of France, the Agenzia Spaziale Italiana (ASI), the United Kingdom Space Agency (UKSA), the Spanish National Institute of Aerospace Engineering (INTA), the Norwegian Space Agency (NOSA), and the Romanian Space Agency (ROSA).

Since 1998, the FAR conference aims at providing space agencies, companies, organizations, universities and research institutes with a forum of excellence in the area of flight vehicle engineering, aerothermodynamics, and re-entry missions.

The conference encompasses the whole spectrum of flying vehicles for suborbital, orbital and exploration applications, including upper stages, (re)-entry, expendable, and reusable vehicles.

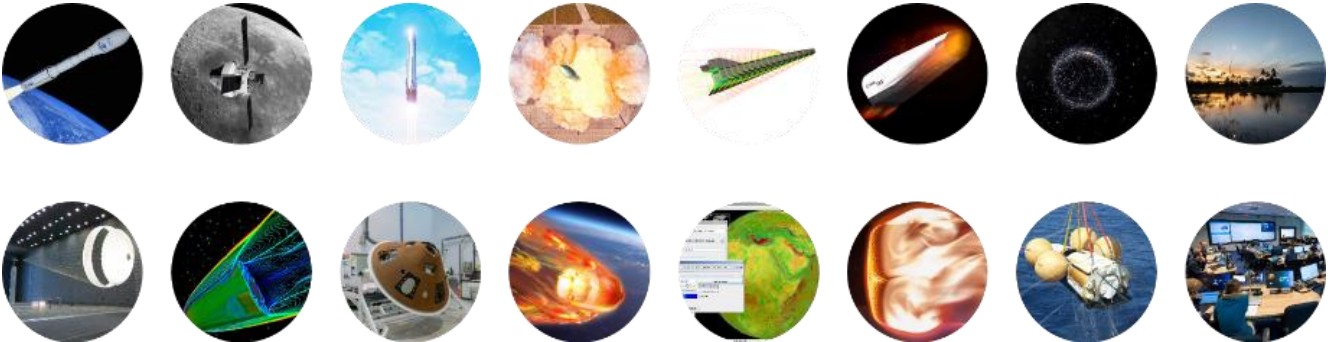
At the conference, the participants are invited to showcase their latest architecture designs, analysis and technical assessments with the aim to promote the exchange of ideas and the identification of new trends and required developments. The field covered are flight vehicle engineering, flight physics, aerodynamics, thermodynamics and fluid dynamics engineering and the architecture design and analysis of space transportation and exploration vehicles.

In addition to the latest theoretical advances in those fields, FAR is especially devoted to software tools. Demonstrations and short tutorials are welcome.

The fields covered include, but are not limited to:

- the architecture design and analysis of current and future space transportation and exploration vehicles,
- flight vehicle engineering,
- flight physics, aerodynamics, thermodynamics and fluid dynamics

- re-usability, design for demise, Hypersonic flight in Earth's and planetary atmospheres
- new space initiatives and opportunities,
- logistics, infrastructure and services enabling and supporting new transportation and exploration concepts.



2. CONFERENCE LOCATION

FAR 2022 will take place in Heilbronn, Germany, at the Bildungscampus Heilbronn.

For more information about the Conference Centre, we invite you to visit the official web site at the following address: <https://bildungscampus.hn/>



© JOSHUA KRULL_2020_AULA_FORUM



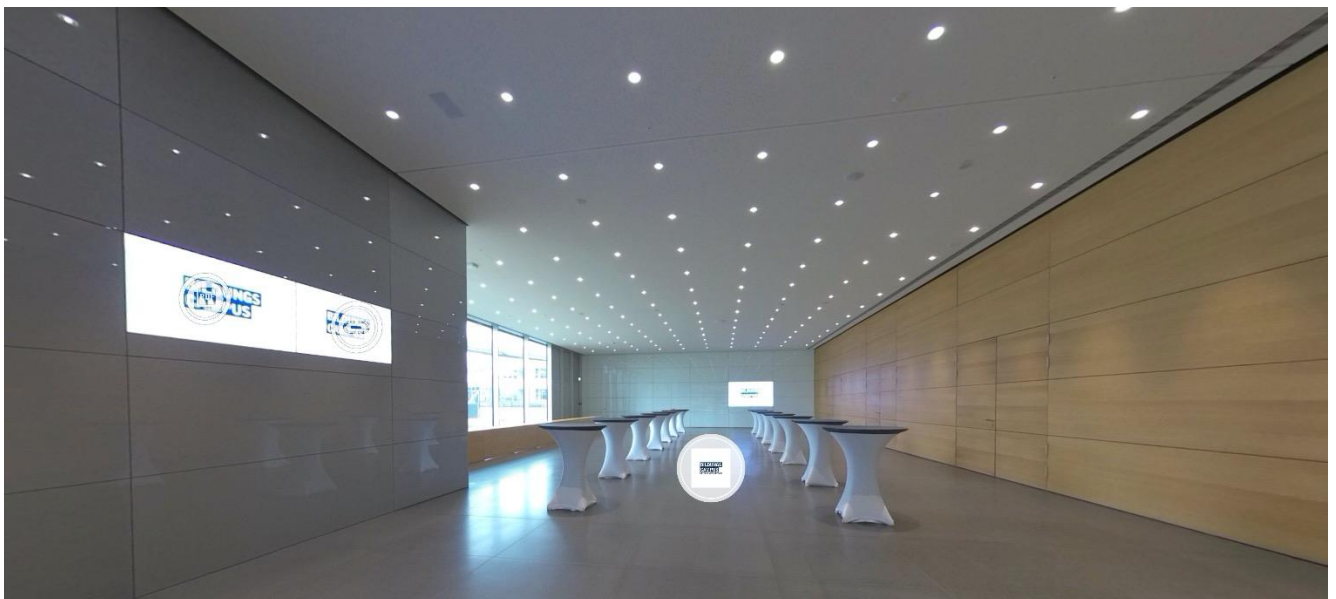
© JOSHUA KRULL_2020_AULA_FORUM



© JOSHUA KRULL_2020_AULA_FORUM

Virtual Tour

<https://tour.ogulo.com/mgSo>



3. EXHIBITION

Companies are invited to display their products during the conference. A dedicated exhibition hall will be located in the conference centre and, to ensure maximum visibility to the participants, all coffee breaks and lunches will take place at the same area.

The exhibition area will be open from **Tuesday 21st June 2022, 09:00 hrs until Thursday 23rd June 2022, 12:00 hrs.**

4. FLOORPLAN

The Conference Centre Map with a preliminary Exhibition Plan are provided in Annex 01. A interactive map can be found [here](#).

5. EXHIBITION OPENING HOURS

The official opening of the exhibition area is on **Tuesday 21st June 2022, at 09:00 hrs.**

The exhibition remains open at any time during the conference, but the exhibitors are asked to be present at their booth to meet the conference participants as a minimum during all coffee breaks.

6. SETUP AND DISMANTLING HOURS

The setup times are on **Monday 20th June 2022 from 13:00 to 17:00 hrs.** A sign with your company name will indicate your display area.

The exhibit dismantling can start on **Thursday 23rd June 2022**, after the morning coffee break.

7. EXHIBITION APPLICATION

Exhibitor Stand Prices

Small Stand - 4 square meters (2x2m)	€ 5,000.00
Large Stand - 6 square meters (3x2m)	€ 10,000.00

Exhibitors can register for a stand via the following [LINK](#) to secure their stand space. Upon receipt of the application, instructions on how to register the exhibition personnel can be found in the exhibition booking portal.

The Stand Packages include

Small Stand

- Exhibitor space of 4 square meters.
- Table in the exhibitor space with 2 chairs.
- Power supply in the exhibitor space.
- Exhibitor logo on the website.
- Link to the exhibitor's web page.
- Security

Large Stand

- Exhibitor space of 6 square meters.
- Table in the exhibitor space with 2 chairs.
- High table in the exhibitor space with 2 highchairs.
- Power supply in the exhibitor space.

- LCD TV screen in the exhibitor space.
- Exhibitor logo on the website.
- Link to the exhibitor's web page.

Cancellation policy

- All cancellations must be made in writing to the ESA Conference Bureau (esaconferencebureau@atpi.com)
- Cancellations received up until 31 December 2021 can be cancelled free of charge
- Cancellations received as of 1 January 2022 will not receive a refund
- Any refunds will be dealt with after the conference

The deadline for exhibition applications is on **Monday 2nd May 2022**. Payment can be made via a bank wire transfer or credit card. After invoicing, the payment should be settled within 14 days. Exhibition bookings will only be confirmed after full payment.

Conference fees

- Early registration (before 1 May 2022): € 550.00 (Excl. VAT) per person.
- Late registration (from 2 May 2022): € 650.00 (Excl. VAT) per person.

8. ADDITIONAL ORDERS

If any additional furniture is needed, exhibitors can rent extra material and book this extra material in the Exhibition Book Portal. Additional furniture which can be booked:

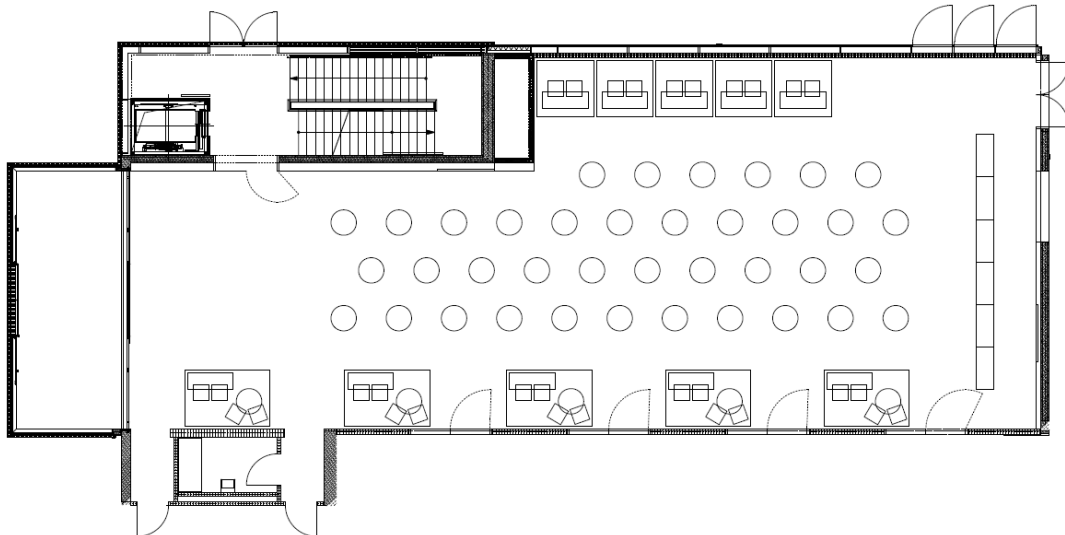
- | | |
|------------------------------|----------|
| • Flipchart | € 25.00 |
| • Pinboard | € 25.00 |
| • Presentation case | € 35.00 |
| • TV screen (55") on a stand | € 300.00 |
| • Laptop | € 75.00 |

9. SHIPPING MATERIALS

Exhibitors are responsible for their own shipping arrangements and costs. Further details regarding the shipment procedure will be communicated closer to the commencement of the conference.

10. ANNEX 01

Exhibition Floor Plan



Conference Centre Floor Plan

