

Creating Continuity out of Chaos:

A Local's Guide to Interoperability and the WI-FOG



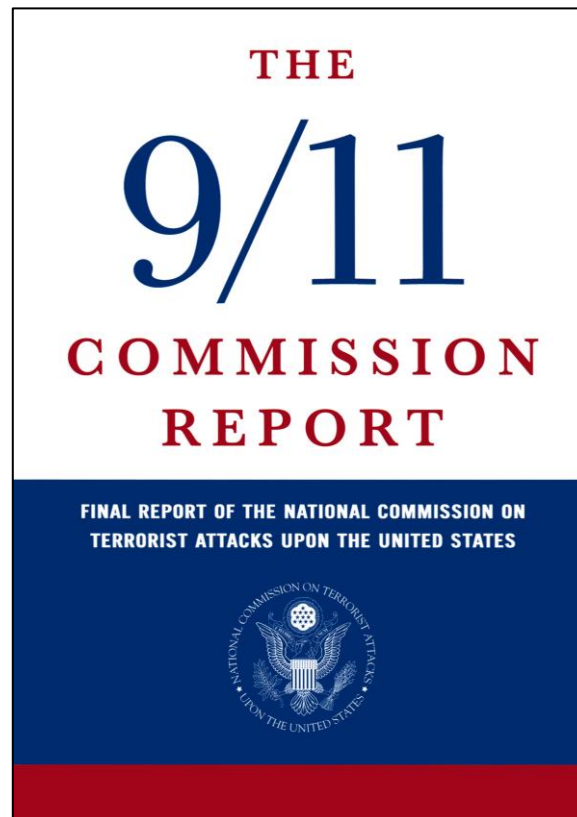
DISCLAIMER: This presentation contains real-world examples. These examples are intended as learning opportunities without judgement.

History

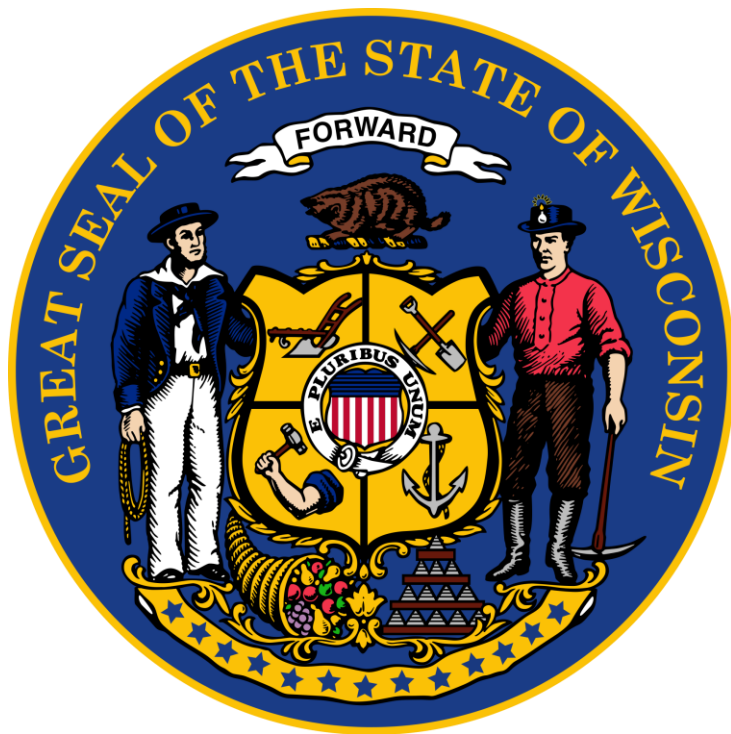


History

- 9/11 Commission Report
- Enhancing Interoperability through the Office of Emergency Communications



History Cont.



- Governance
 - Interoperability Council and Subcommittees
- Communications Unit (COMU)

What Works and What Doesn't?



Patrick Cudahy Fire (2009)

Worked

- Law and Fire mutual aid
- One mile evacuation by mutual aid agencies
- WI-TERT deployment

Didn't Work

- Radio programming
- Channel naming
- VHF vs. 800
- Removal of VHF channels in PSAPs

Act 10 Budget Protest (2011)



Act 10 Protest

Worked

- AHJ engaged mutual aid early
- 4 COML's assigned
- Cache management
- WI-TERT deployment for RADOs and COMLs

- Provided support to 500+ officers at peak staffing

Didn't Work

- Radio programming
- Channel naming
- VHF vs. 800

Kenosha Civil Unrest, August-September 2020



Kenosha Civil Unrest (2020)

Worked

- COML deployed with initial SMART request
- COMU staffed event daily for two weeks
- Leveraged partnerships for equipment
- Cache management
- POTUS/DNC nominee visit

Didn't Work

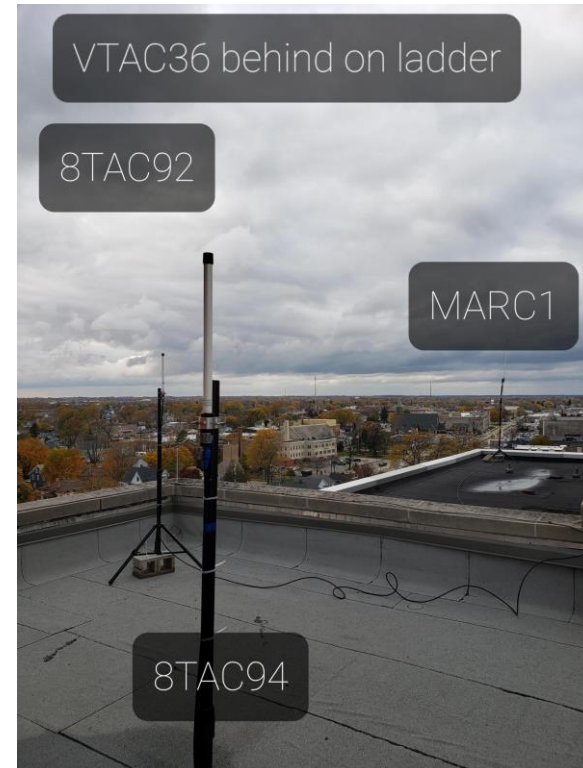
- Radio programming
- Channel naming
- VHF vs. 800
- POTUS/DNC nominee visit

- COVID-19 pandemic in full swing

Kenosha Charging Decision (Jan 2021)



Kenosha Rittenhouse Verdict (Nov 2021)



Kenosha Civil Unrest (2021)

Worked

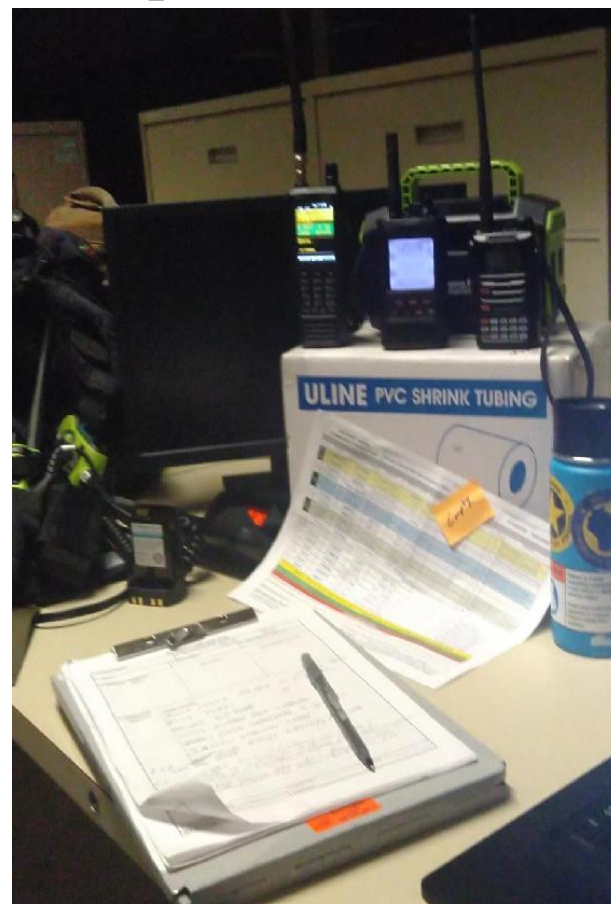
- AHJ leveraged existing COMU partnerships
- COML/COMT staffed in shifts
- Temp fixed equipment from 2020 still in place
- Radio programming was being addressed

Didn't Work

- Radio programming
- Channel naming
- VHF vs. 800

- COVID-19 pandemic still in full swing

Racine In-Custody Death Charging Decision (Jan 2022)



Racine ICD (2022)

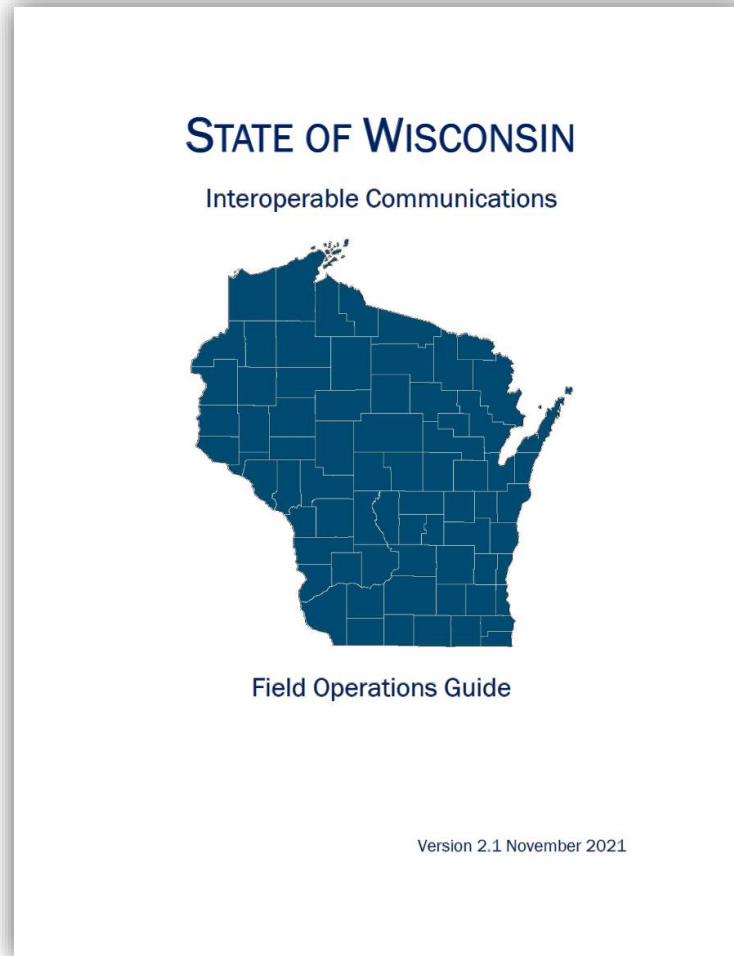
Worked

- AHJ proactively engaged COMU
- AHJ bought fixed equipment to install for event
- COML/COMT staffed in shifts
- COMU brought into planning early

Didn't Work

- VHF vs. 800 agencies
- COVID-19 pandemic still in full swing

What Can You Do?





Ch. 10.3 VHF BAND

Ch. 10.3(a) Statewide VHF

Statewide VHF Interoperability Channels						
Channel Name	Mob. RX		Mob. TX		A D	Notes
	Freq	Tone	Freq	Tone		
EMS A	155.4000	CSQ	155.4000	D156	A	EMS (Advanced Life Support) ¹
EMS B ⁴ (VMED28)	155.3400 <i>155.3400</i>	CSQ <i>156.7</i>	155.3400 <i>155.3400</i>	D156 <i>156.7</i>	A	EMS ¹ Do not use for incident interoperability communications. This is an active EMS channel
EMS C	155.2800	D156	155.2800	D156	A	EMS/Public Health ¹
FG BLACK ⁴ (VFIRE24)	154.2725 <i>154.2725</i>	94.8 <i>156.7</i>	154.2725 <i>154.2725</i>	94.8 <i>156.7</i>	A	Do not use at scene with IFERN or FG WHITE. Frequently used for aeromedical landing zone coordination
FG BLUE ⁴ (VFIRE23)	154.2950 <i>154.2950</i>	85.4 <i>156.7</i>	154.2950 <i>154.2950</i>	85.4 <i>156.7</i>	A	Do not use at scene with FG GRAY or IFERN2
FG GOLD	153.8375	91.5	153.8375	91.5	A	Do not use at scene with FG RED or MARC1
FG GRAY ⁴ (VFIRE25)	154.2875 <i>154.2875</i>	136.5 <i>156.7</i>	154.2875 <i>154.2875</i>	136.5 <i>156.7</i>	A	Do not use at scene with FG WHITE or FG BLUE
FG RED	153.8300	69.3	153.8300	69.3	A	Do not use at scene with FG GOLD
FG WHITE ⁴ (VFIRE21)	154.2800 <i>154.2800</i>	74.4 <i>156.7</i>	154.2800 <i>154.2800</i>	74.4 <i>156.7</i>	A	Do not use at scene with FG BLACK or FG GRAY
IFERN ⁴ (VFIRE22)	154.2650 <i>154.2650</i>	210.7 <i>156.7</i>	154.2650 <i>154.2650</i>	210.7 <i>156.7</i>	A	Do not use at scene with FG BLACK
IFERN2 ⁴ (VFIRE26)	154.3025 <i>154.3025</i>	67.0 <i>156.7</i>	154.3025 <i>154.3025</i>	67.0 <i>156.7</i>	A	Do not use at scene with FG BLUE

FOR USE BY PUBLIC SAFETY AGENCIES

Page | - 42 -

INTEROPERABILITY CHANNELS AND TALKGROUPS
WI EMERGENCY HOTLINE – CALL 800-943-0003, OPT. 2 FOR RESOURCE REQUESTS



Ch. 10.6(b) Nationwide 800 MHz

Non-Federal 800 MHz Interoperability Mutual Aid Repeater Channels			
Channel Name	Mob. RX	Mob. TX	Description
8CALL90	851.0125 (866.0125)	806.0125 (821.0125)	Calling
8CALL90D	851.0125 (866.0125)	851.0125 (866.0125)	Calling – Direct
8TAC91	851.5125 (866.5125)	806.5125 (821.5125)	Tactical
8TAC91D	851.5125 (866.5125)	851.5125 (866.5125)	Tactical – Direct
8TAC92	852.0125 (867.0125)	807.0125 (822.0125)	Tactical
8TAC92D	852.0125 (867.0125)	852.0125 (867.0125)	Tactical – Direct
8TAC93	852.5125 (867.5125)	807.5125 (822.5125)	Tactical
8TAC93D	852.5125 (867.5125)	852.5125 (867.5125)	Tactical – Direct
8TAC94	853.0125 (868.0125)	808.0125 (823.0125)	Tactical
8TAC94D	853.0125 (868.0125)	853.0125 (868.0125)	Tactical – Direct

- CTCSS 156.7(5A) RX and TX.
- Default operations should be carrier squelch on RX, CTCSS 167.9 TX.
- The frequency in parenthesis, which is 15 MHz higher, is the frequency used before rebanding – channel names were ICALL, ITAC1 – ITAC4.
- Wideband FM 20K0F3E before and after rebanding.
- If the user can enable/disable without reprogramming the radio, the indicated CTCSS tone should also be programmed for receive, and the user instructed how and when to enable/disable.

Aiming for Success

- Successful operations typically contain the following:
 - Strong Command Emphasis
 - Training on Equipment and Plans
 - Knowledge of Mutual Aid
 - Understanding the utility of the COMU

**Utilize these to make your agency
more resilient!**

But Wait!

- There is one integral element for any of these suggestions to work

Command Emphasis

What Should I Do Next?



Know What is in Your Radio

- Interoperability Channel Programming
 - NIFOG/WIFOG channels are necessary for mutual aid communications
 - Ensure these channels are programmed correctly into department radios & that staff is aware of their presence
- Radio Training
 - General Knowledge & Understanding

Know Your Equipment

- Know what you have and what you can bring to the party (with correct programming!)
 - Radios with NIFOG/WIFOG programming
 - Repeaters with Interoperability Channels
 - Local repeater installations—consider partnering with mutual aid partners
 - Understand what other repeaters are in the area to (this may require interstate communication!)
 - Make sure that a person and a backup know how to access and operate the repeater (even remotely)
 - Ex: Langlade Derecho

Langlade Derecho (July 2019)



Asking for Help

- Local Resources
 - What is in your backyard?
 - Personnel and equipment
 - Know your neighbors
- State Resources
 - Available when local resources are exhausted or unavailable
 - Requested through the Wisconsin Emergency Hotline
 - **1-800-943-0003, option 2**
 - Personnel & equipment



Resource Highlight--COML

- Communications Unit Leaders (COMLs)
 - Important resource
 - Training opportunities for internal development



In Closing

Tips for Success

1. Know what is in your radio
2. Know your equipment
3. Know how to ask for help

**However, none of this will work
without command emphasis!**

Questions?



Contact

- **Jamie Formea, COML/COMT**
 - Deputy Chief, Lake Country Fire & Rescue
 - jformea@lakecountryfire.com
- **Paul Hughes, COML**
 - Communications & Warning Officer, Wisconsin Emergency Management
 - PaulD.Hughes@wisconsin.gov
- **Doug Lofreddo**
 - Asst. Communications & Warning Officer, Wisconsin Emergency Management
 - douglas.lofreddo@wisconsin.gov
- **Jim Westover, COML/COMT**
 - State Frequency Coordinator, Wisconsin State Patrol
 - jamesl2.westover@dot.wi.gov
- **Margaret Zieke, COML/COMT**
 - Public Safety Broadband Program Manager, Office of Emergency Comms.
 - Margaret.Zieke@wisconsin.gov