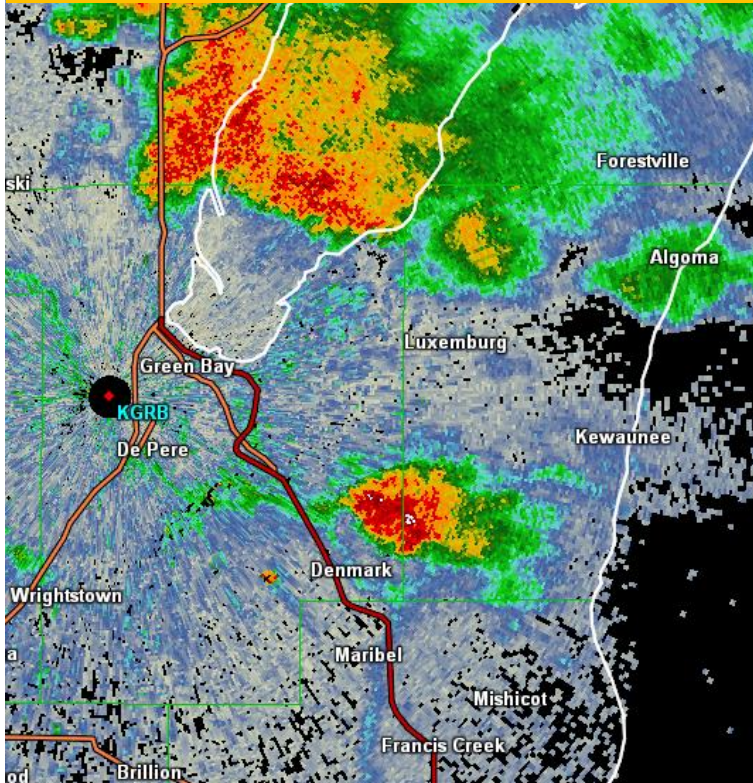




# Common Radar Features

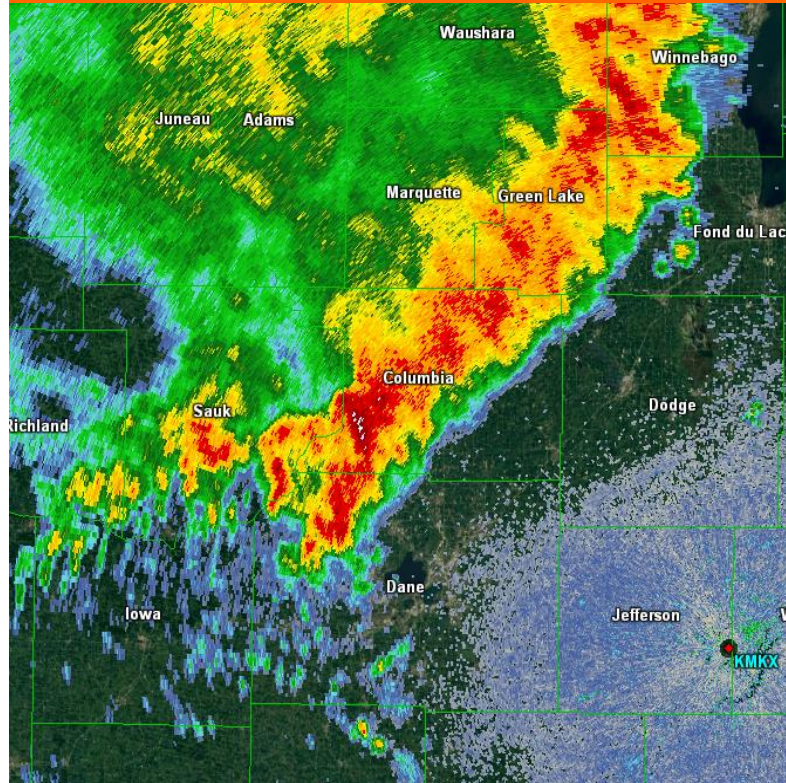
## Types of Thunderstorms

### Ordinary Thunderstorm



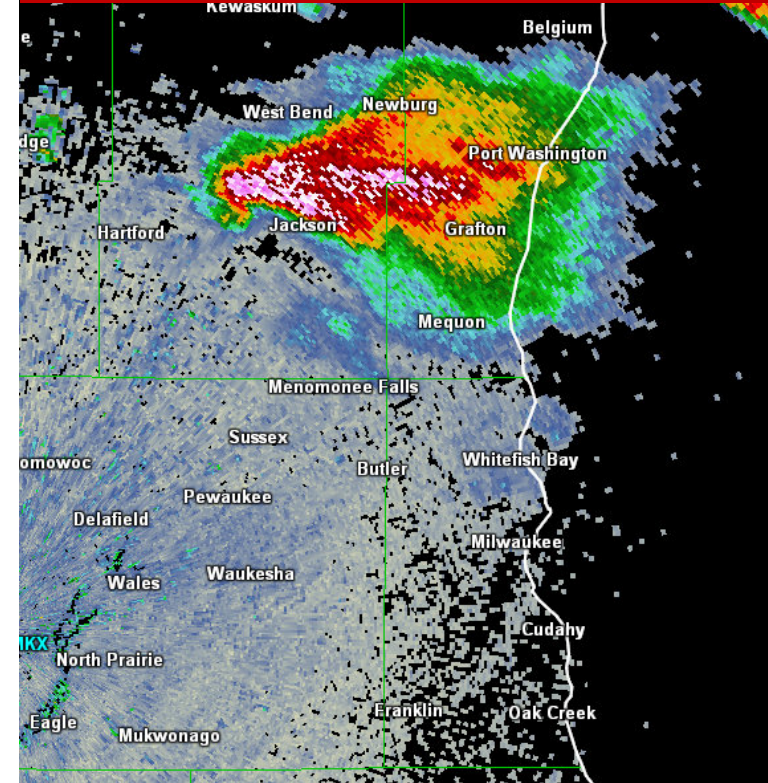
- ❖ Shorter lived
- ❖ "Pulse storms"
- ❖ Brief heavy rain, small hail, gusty winds

### Squall Line Thunderstorm



- ❖ Most common severe weather type
- ❖ Longer lived
- ❖ Bowing features
- ❖ Damaging winds/tornadoes

### Supercell Thunderstorm

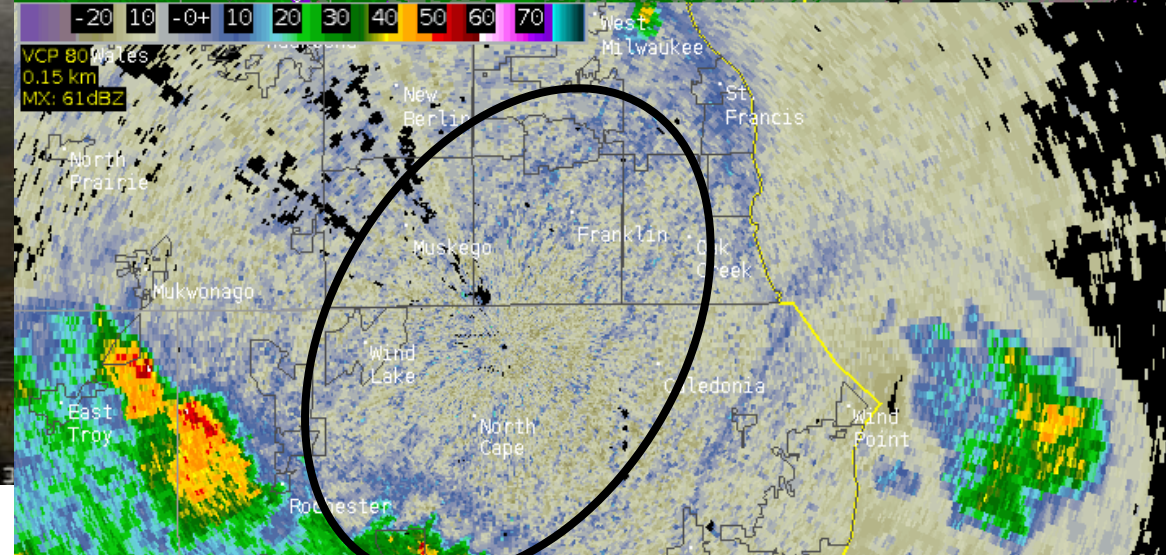
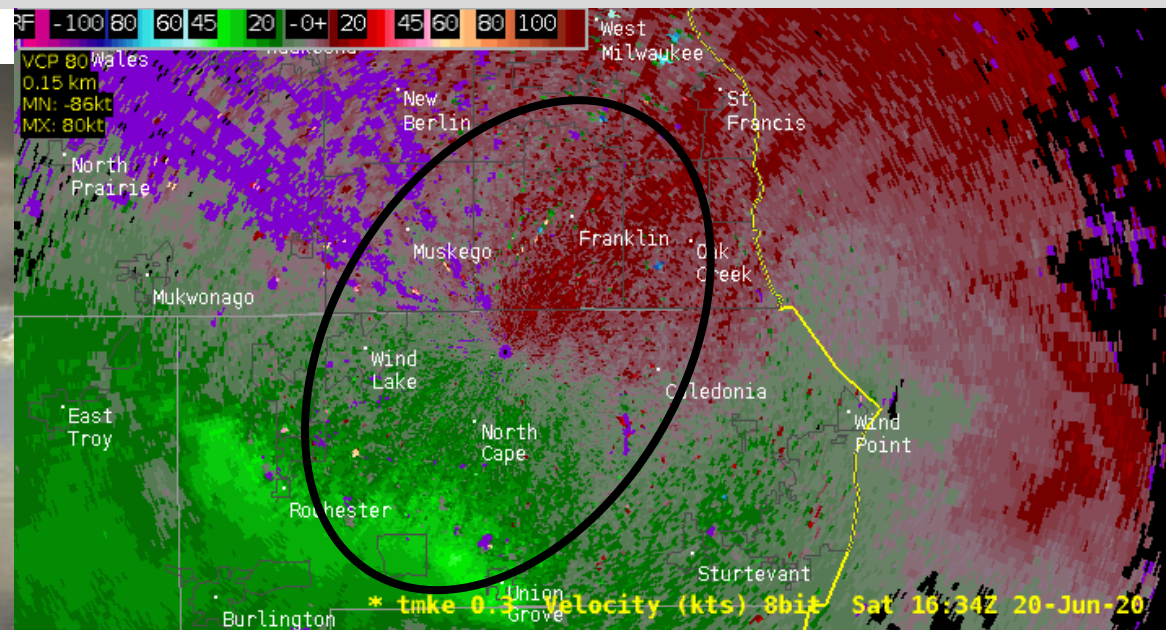


- ❖ Rare, higher end severe weather
- ❖ Longer lived
- ❖ Hook/pendant feature
- ❖ Large tornadoes, large hail, winds



# Wind Features: Downbursts

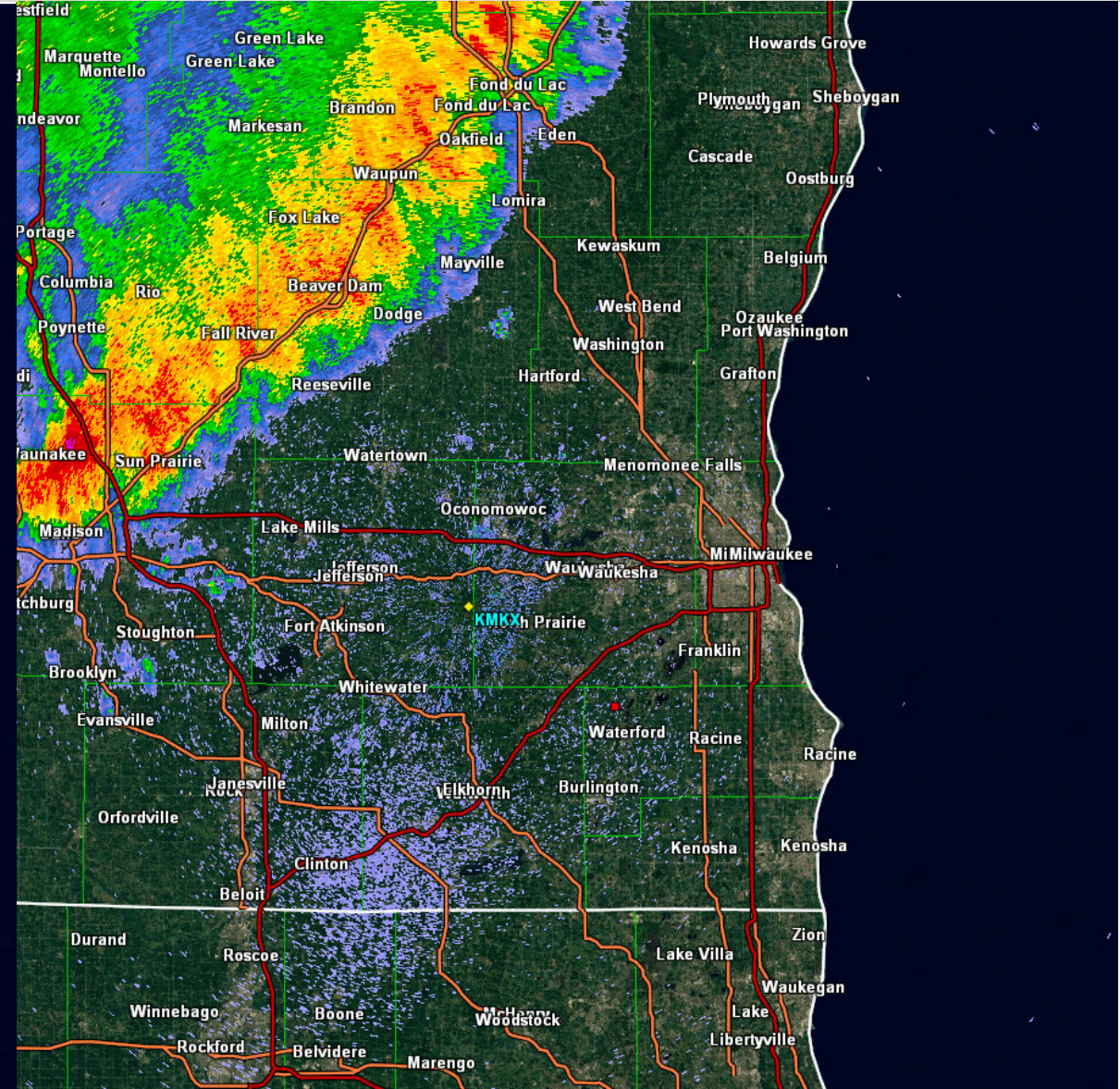
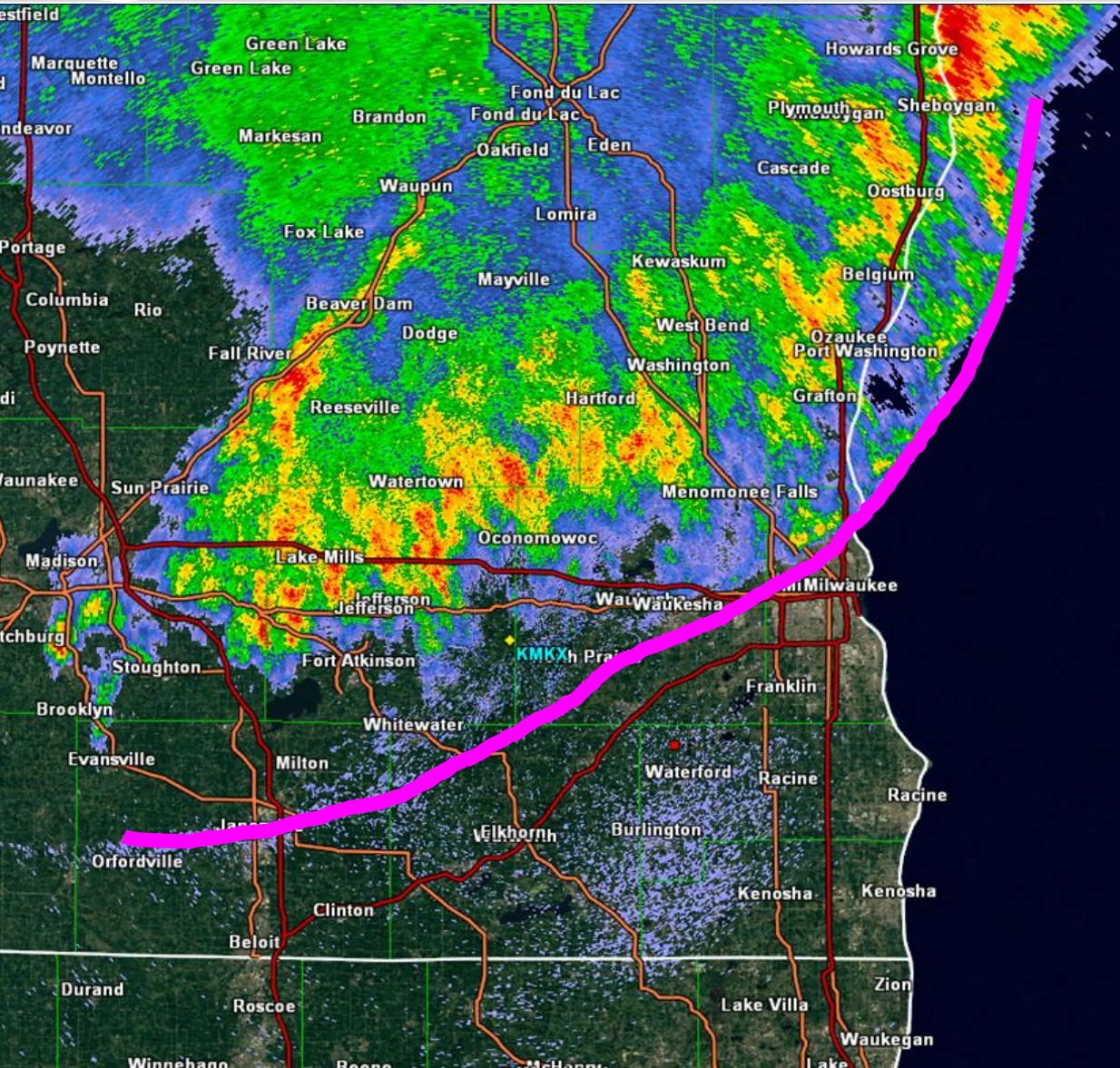
Short lived burst of strong, downward winds





# Wind Features: Outflow Boundary

Wind shift out ahead of main rain area

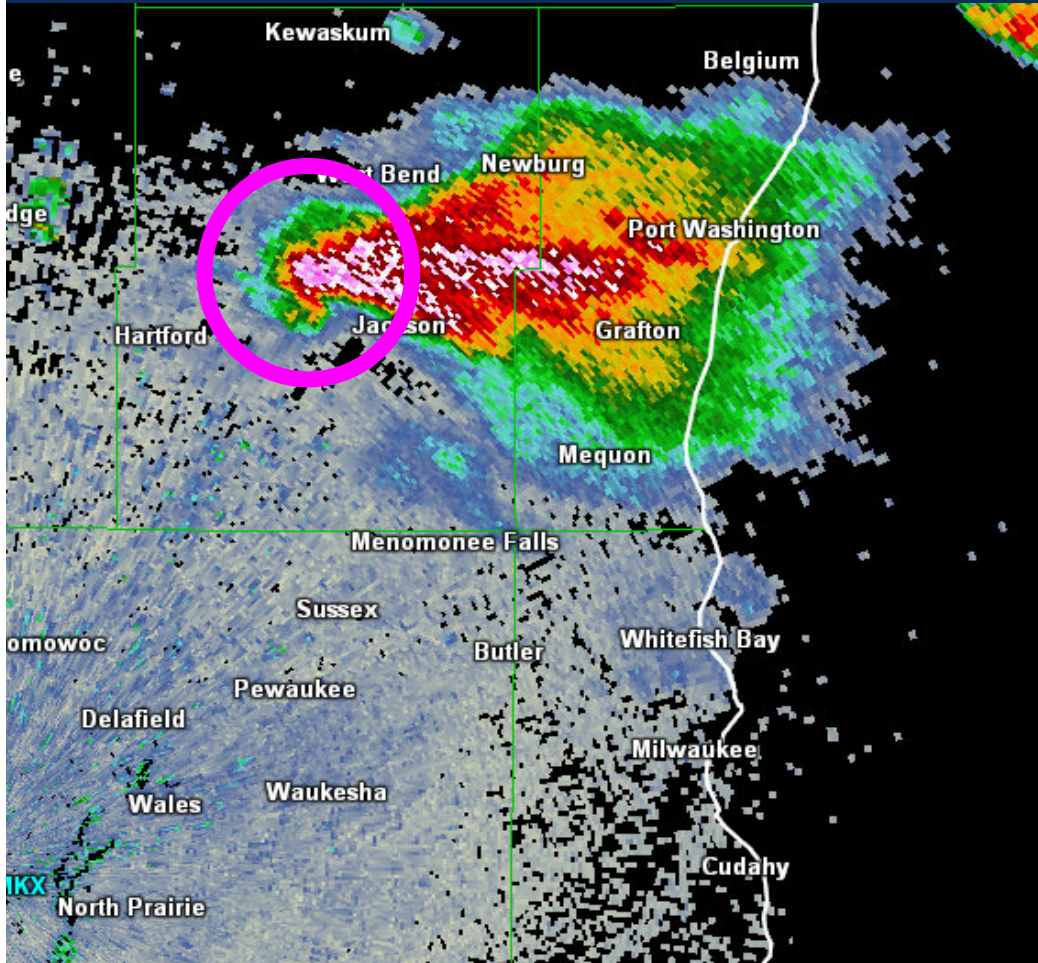




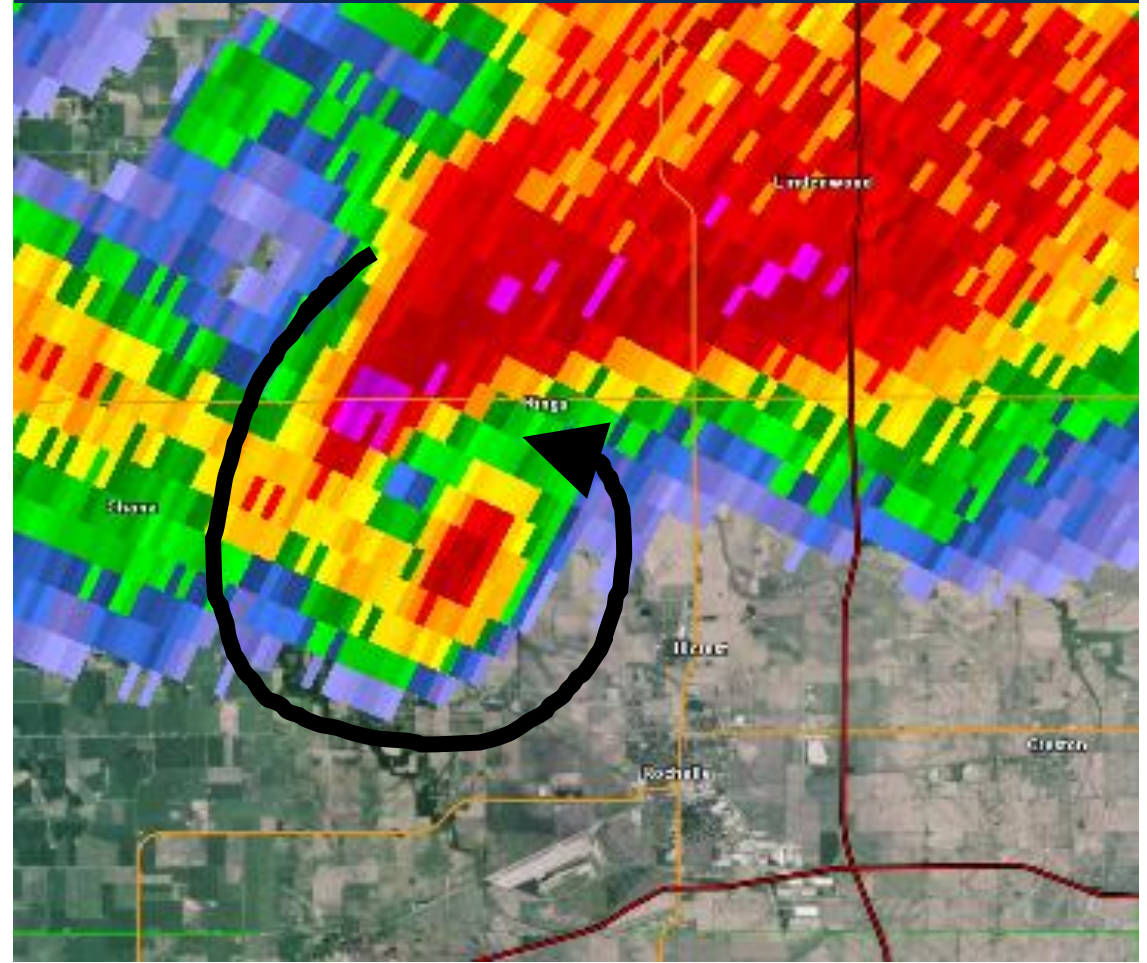
# Hook Echo/Pendent

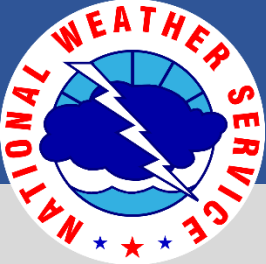
Supercells, indicative of rotation in updraft

## Pendent



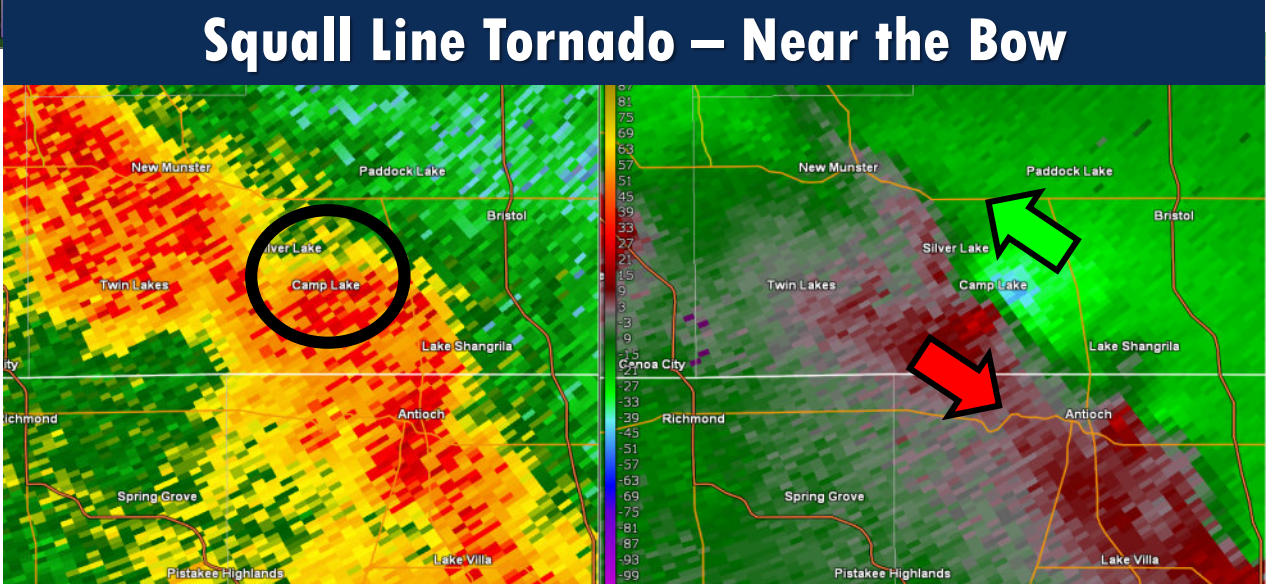
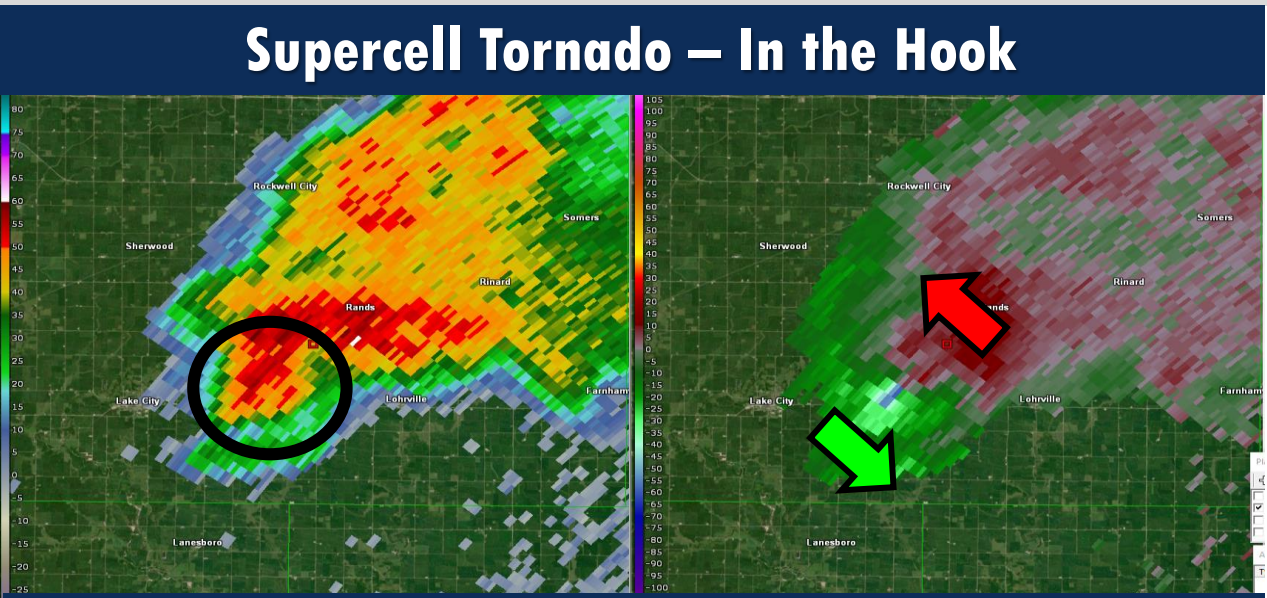
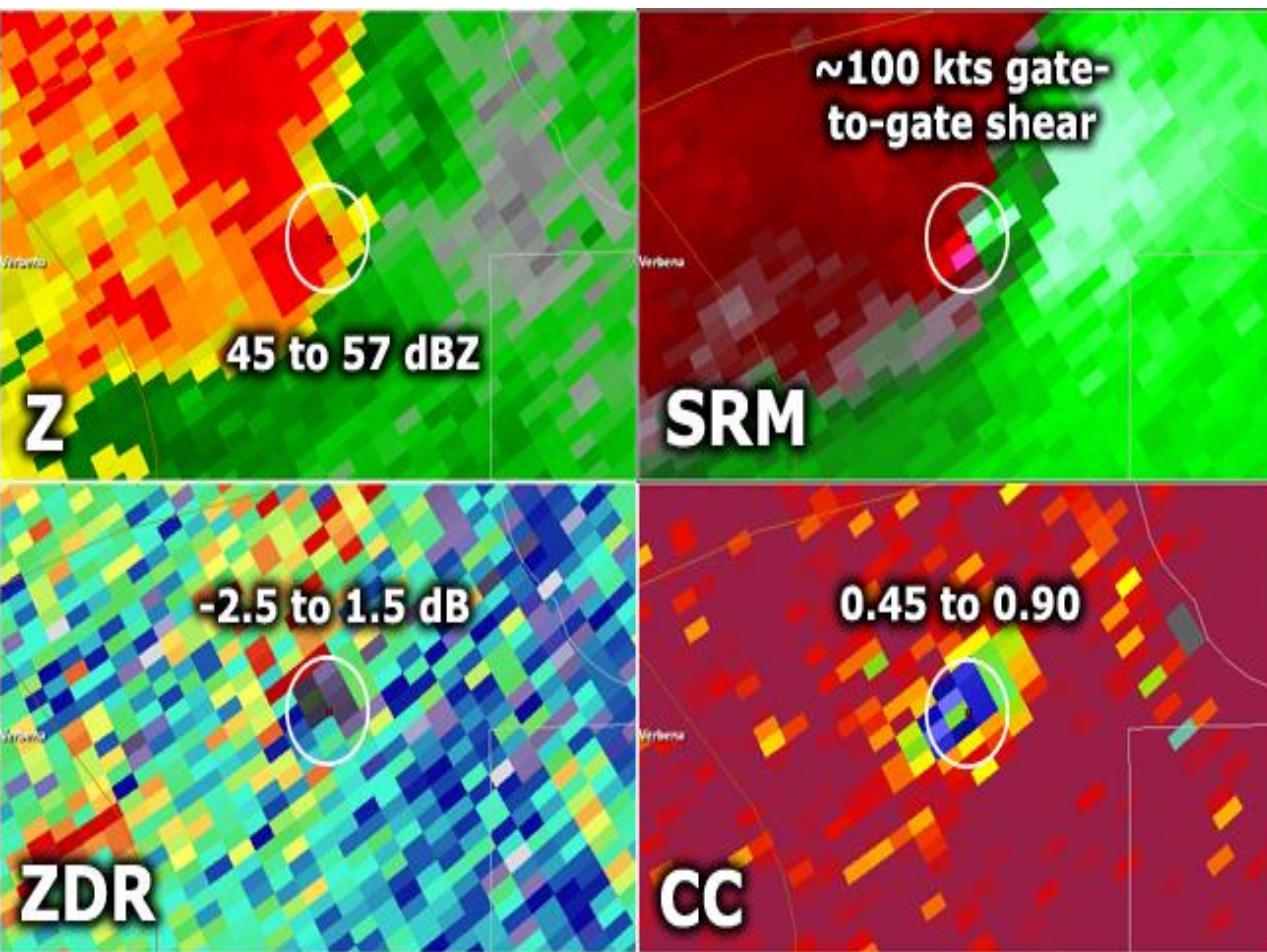
## Hook Echo





# Tornadoes

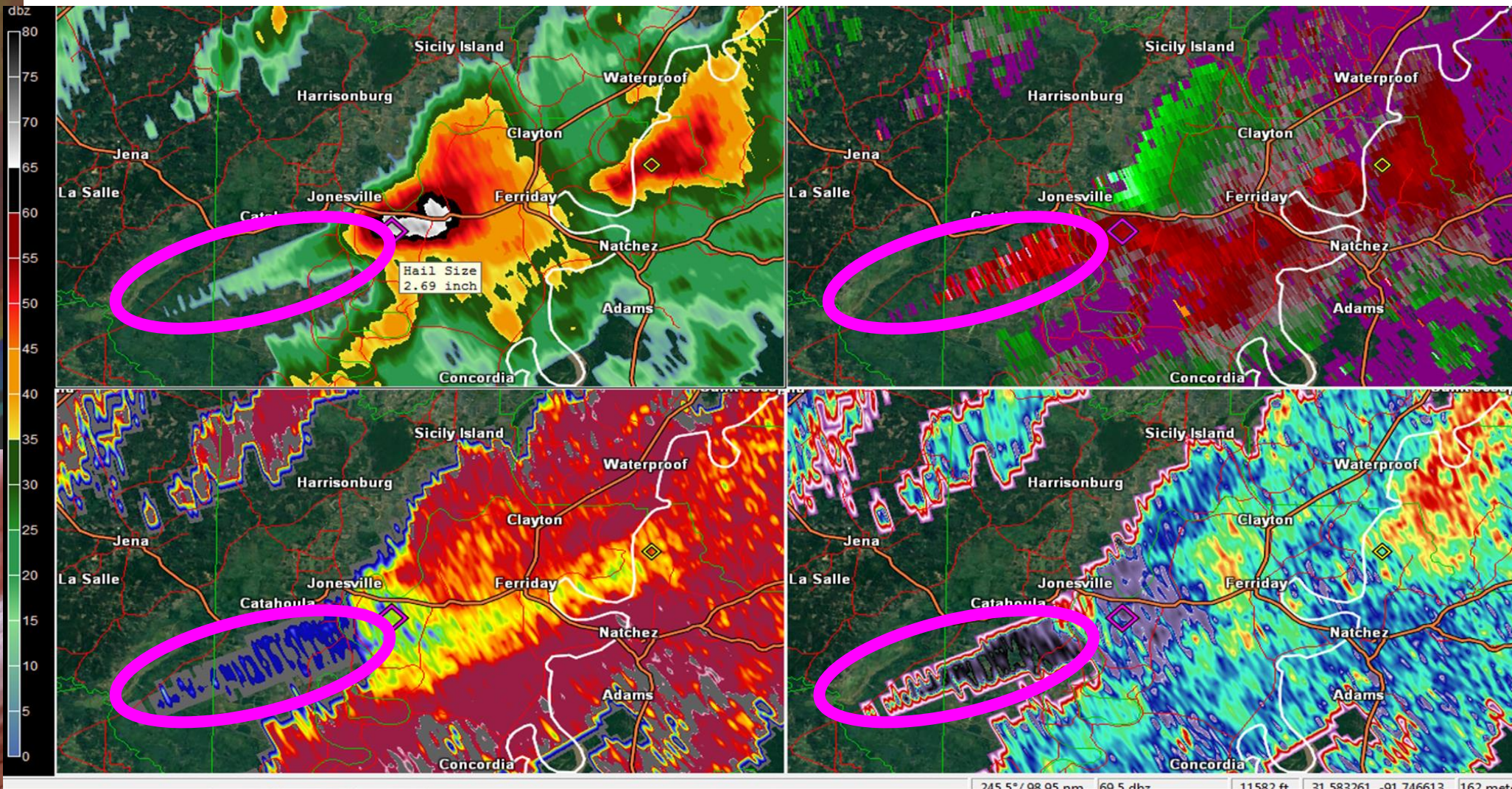
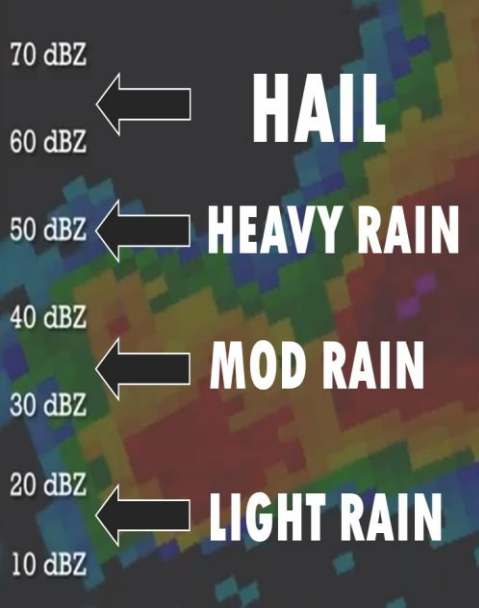
Most common with supercells and squall lines, Can see Tornadic Debris

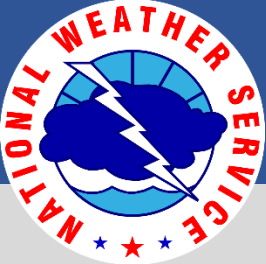




# Hail Features: Hail Spike

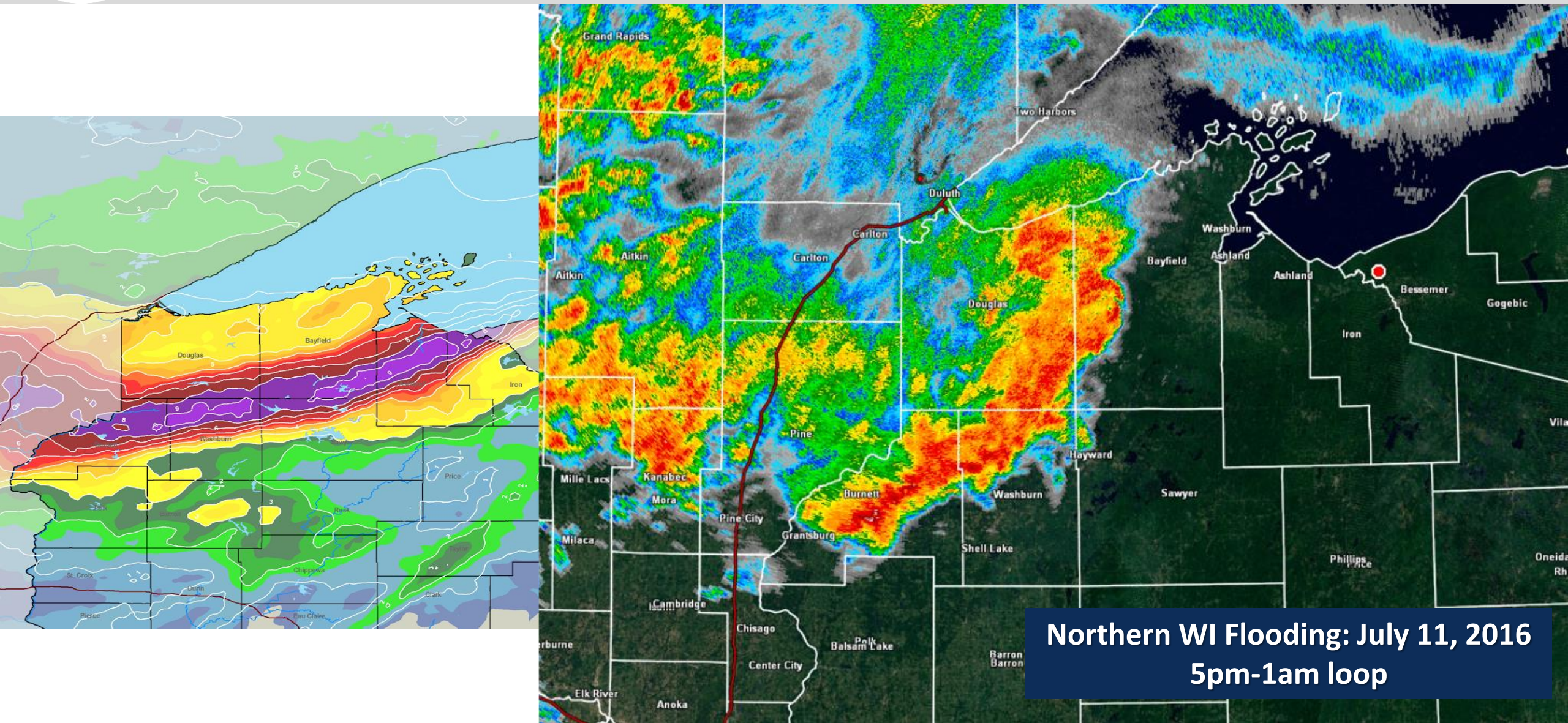
High Reflectivity, Hail Spike





# Flash Flood Features: Training

Repetitive Rounds of Storms, Training



**Northern WI Flooding: July 11, 2016  
5pm-1am loop**



# Let's go through some cases

Timothy.J.Halbach@noaa.gov

