

CoLEAD: An Innovative Model of Justice and Housing

Presented by: Tara Moss, PDA Co-Executive Director, Programs

Crystal Erickson, Housing Manager, CoLEAD

Chevonna Gaylor, Director of Education & Resiliency

Marco Brydolf-Horwitz, Department of Sociology, University of Washington (VERIFY)



**LET EVERYONE
ADVANCE WITH DIGNITY**

April 10, 2024 | Housing First Partners Conference

Meet Our Team

Tara Moss, Co Executive Director of PDA



Crystal Erickson, Housing Manager, CoLEAD



Chevonna Gaylor, Director of Education & Resiliency



Marco Brydolf-Horwitz, University of Washington Department of Sociology



PDA (Purpose. Dignity. Action.)

PDA advances social and racial equity and community health through reform of the criminal legal system. Grounding reform in a public health and safety framework, PDA develops new strategies and implements models that improve on conventional responses to crime and public order issues. In collaboration with community and government partners, we use policy advocacy, organizing, litigation, and public education to achieve our goals.

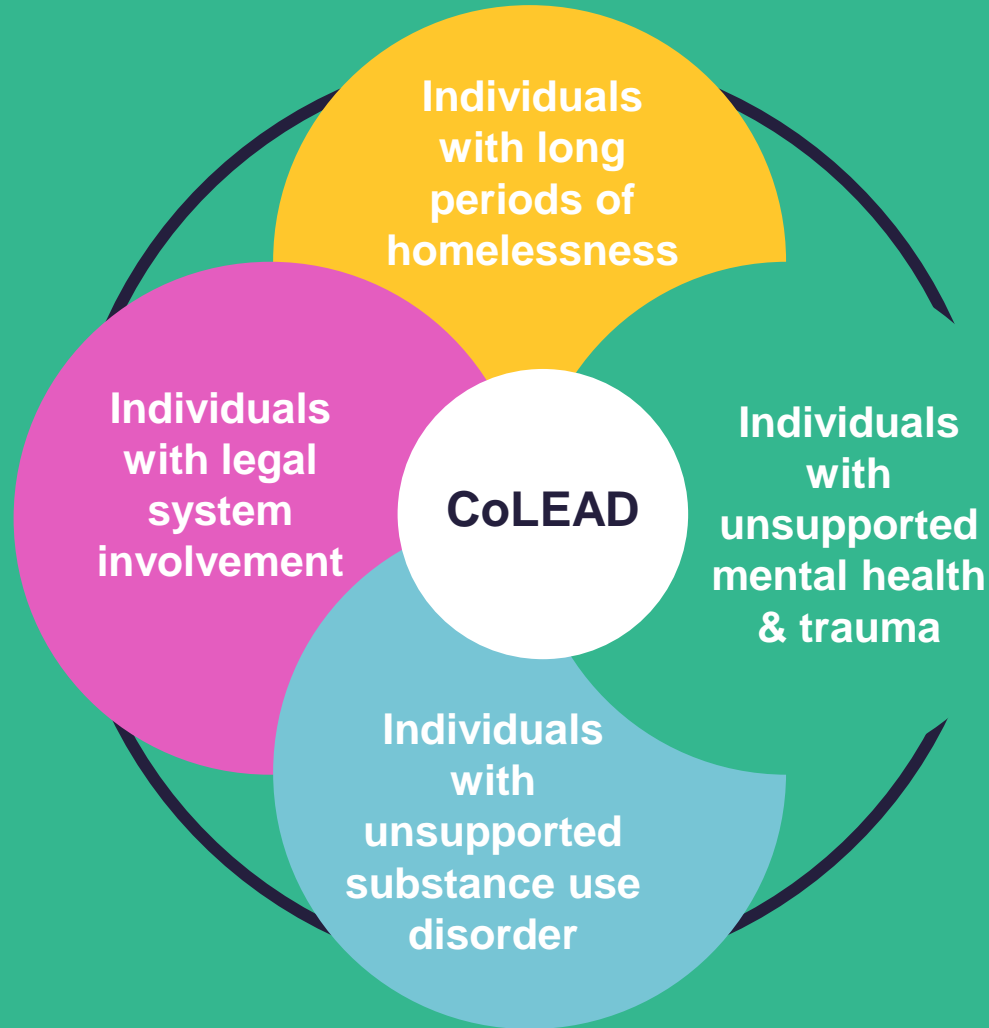


How CoLEAD Came to Be



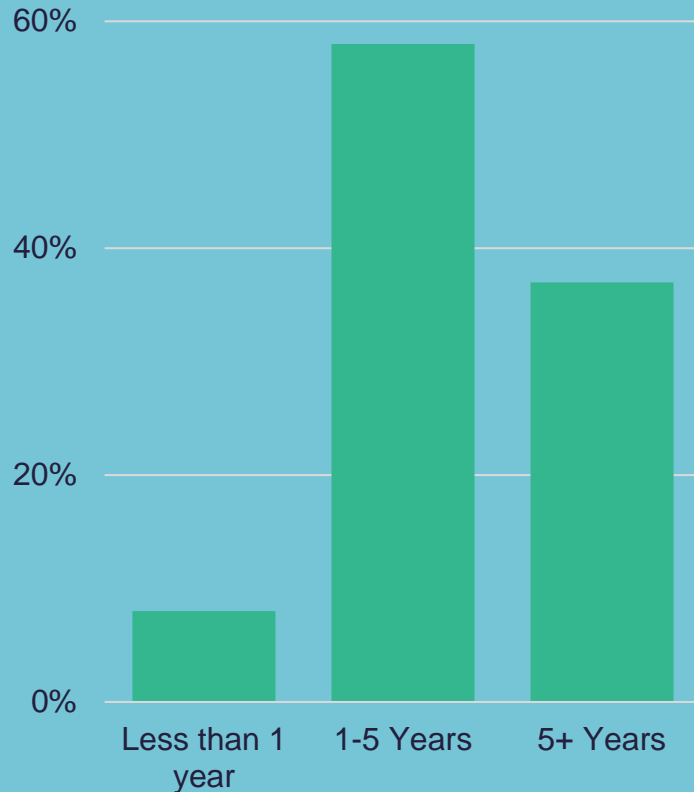
When we embrace the values of **care**, **access to support**, & **humanity**, a solution - without displacement or enforcement - is celebrated.

CoLEAD's Target Population



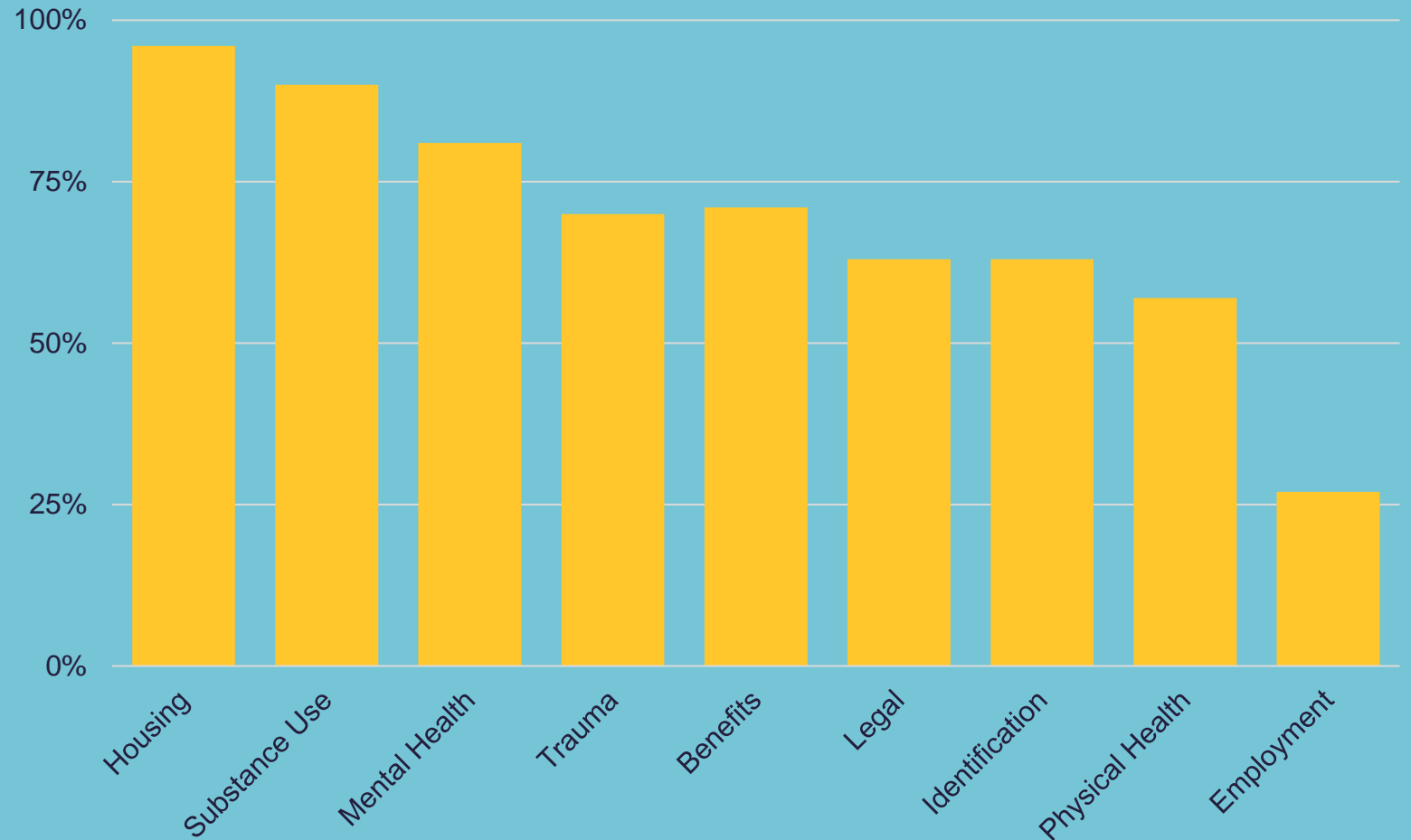
Assess and Understand Unique Needs

Homelessness History



1/3 of Encampment Participants have experienced 5+ years of homelessness

Types of Support Requested



88% of Encampment Participants are seeking support with substance use.

CoLEAD's Approach

Expertise

Street Outreach Reputation
Community Justice Leaders
Lived Experience
By-Name-List Creation

Clinical Skills

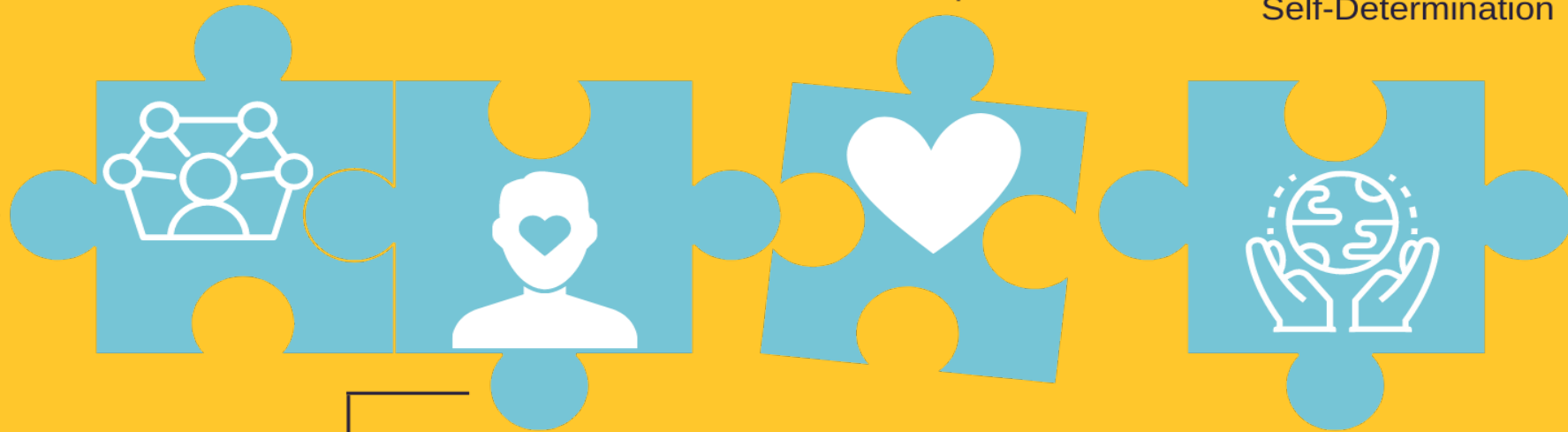
Harm Reduction
Housing First
Trauma-Informed Care
Field-based engagement & coordination

Compassion

Dignity
Accountability
Safety
Respect
Self-Determination

Community Response

Coordination
Collaboration
Organization





Housing & Aftercare

Aftercare provides:

- “Golden thread” of support from shelter to permanent housing
- Problem-solving for participants and landlords to prevent eviction.
- A critical tool to breaking the cycle of homelessness by working diligently to keep people housed.



CoLEAD PHASE: **AFTERCARE** is 12 months post-permanent housing placement

Month 3 to 9+ in CoLEAD Lodging (beginning of day 60 in lodging)	At placement into permanent housing unit to the first 7 Days !	First 90 days in housing	Months 3 through 6	Months 6 through 9	Months 9 through 12
Aftercare Warm Hand Off	Transitioning from CoLEAD shelter to own independent housing	LEARNING how to live independently with case manager support	GROWING in SELF-SUFFICIENCY in housing (skill building!)	BEING self-sufficient and demonstrating self-sufficiency	SUSTAINING consistent self-sufficiency

CoLEAD PHASE: **AFTERCARE**





JustCARE: An Analysis of Housing and Other Outcomes

Katherine Beckett, Allison Goldberg, and Marco Brydolf-Horwitz

University of Washington

February, 2023

Finding 1: JustCARE Serves a Particularly Vulnerable Population

- 94% of encampment residents had been living unsheltered for more than one year.

57% had been living unsheltered for more than five years.
- 99% of JustCARE participants report a mental health disorder or SUD.
- A majority of JustCARE participants reported poly-drug use; only 6% report no substance use or marijuana only.

Finding 2: Need for Services and Service Utilization is High

- All but one surveyed encampment resident identified service needs beyond housing support.
- A large majority of encampment residents are offered and accept temporary lodging.
- JustCARE provides numerous supports to all participants.
 - Welcome kits
 - Needs assessments
 - Case management
 - Cell phones
 - Food support
 - Medical care and coordination
 - Transportation
 - Harm reduction supplies
 - Legal aid and coordination
 - Benefits enrollment assistance

Finding 3: Housing Outcomes Have Changed Markedly Over Time

TABLE 2. HOUSING STATUS AT EXIT, WAVES 1 AND 2

	Percent Permanent Housing	Percent Temporary Housing	Percent Returned to Homelessness	Percent Other Outcome	Average Exits to Permanent Housing Per Month
Wave 1 exits n=208	20.2	20.2	51.9	7.7	2.3
Wave 2 exits n=144	70.8	5.6	17.4	6.3	17

Source: Brenton Zachry, Data Analyst, Public Defender Association.

Note: Wave 1 exits took place from September 1, 2020 to February 28, 2022. Wave 2 includes participants who exited from March 1, 2022 through Aug. 31, 2022.

Conclusions

- Harm reduction oriented transitional lodging can serve as an effective bridge to permanent housing for people with many vulnerabilities and challenges

When permanent housing resources are available and effective coordination exists

- People who have lived unsheltered for a long time and have numerous barriers to housing are generally not housing or service resistant

Providing appropriate housing and supports is key



Conclusions

- Harm reduction-oriented transitional lodging can serve as an effective bridge to permanent housing for people with many vulnerabilities and challenges.

When permanent housing resources are available and effective, coordination exists.

- People who have lived unsheltered for a long time and have numerous barriers to housing are generally not housing or service resistant.

Providing appropriate housing and supports is key.



Questions?

Get in touch!

Tara Moss: tara.moss@wearepda.org

Crystal Erickson: crystal.erickson@wearepda.org

Chevonna Gaylor: chevonna.gaylor@wearepda.org

Marco Brydolf-Horwitz: mbrydo@uw.edu

