

Housing as a Healthcare Intervention:
Chicago & Cook County



**A Recipe for Health: The Leadership of People with Lived
Experience in Supportive Housing**

Objectives

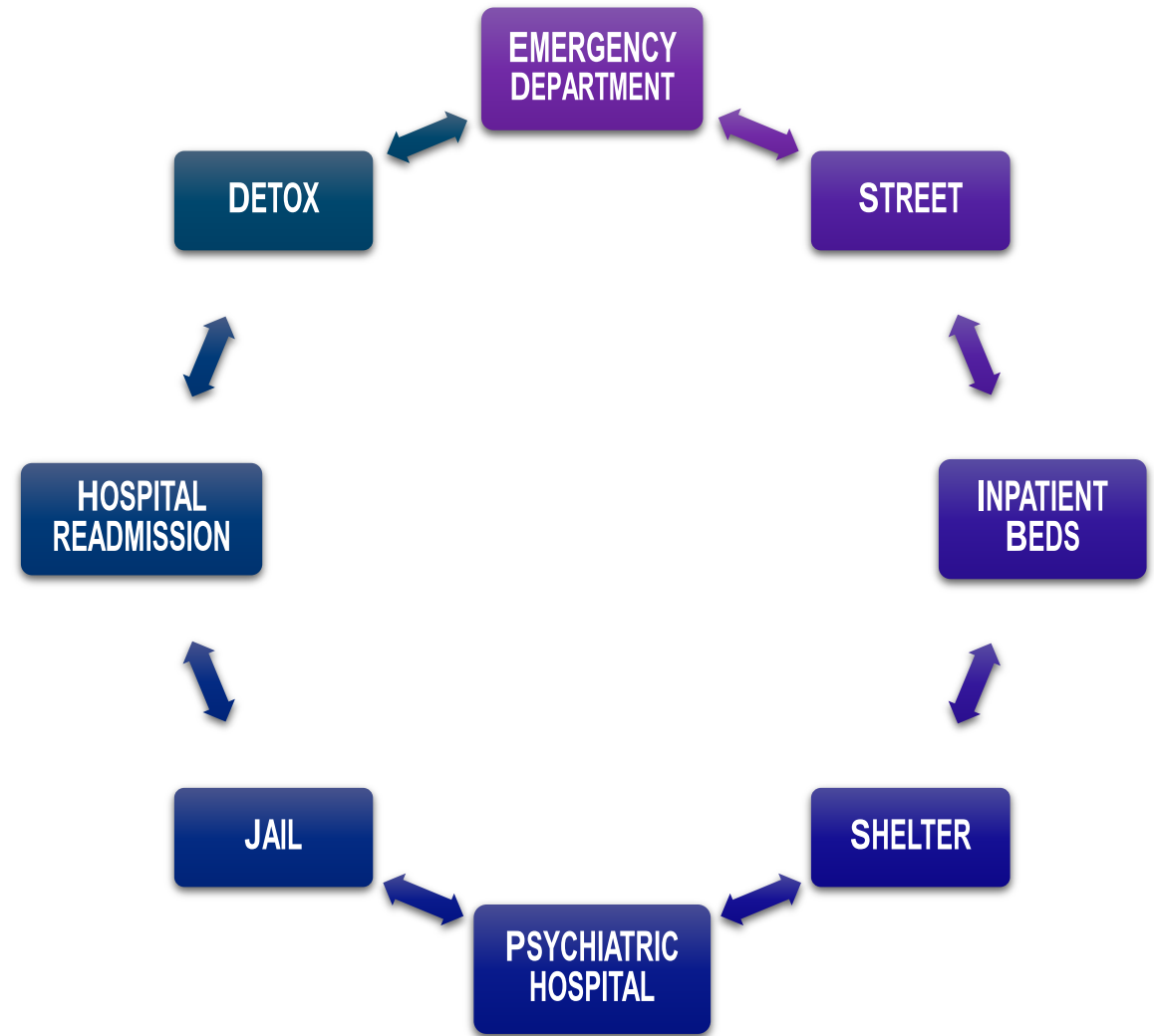
In this session, you will:

Learn about the innovative funding model and structure of the Chicago & Cook County Flexible Housing Pool

Identify key ingredients for successful partnership with people with lived experience in program development

Plan and discuss key ingredients you will need for effective inclusion, collaboration and leadership with tenants.

The Challenge: People Experiencing Homeless Cycle Through High Cost Settings

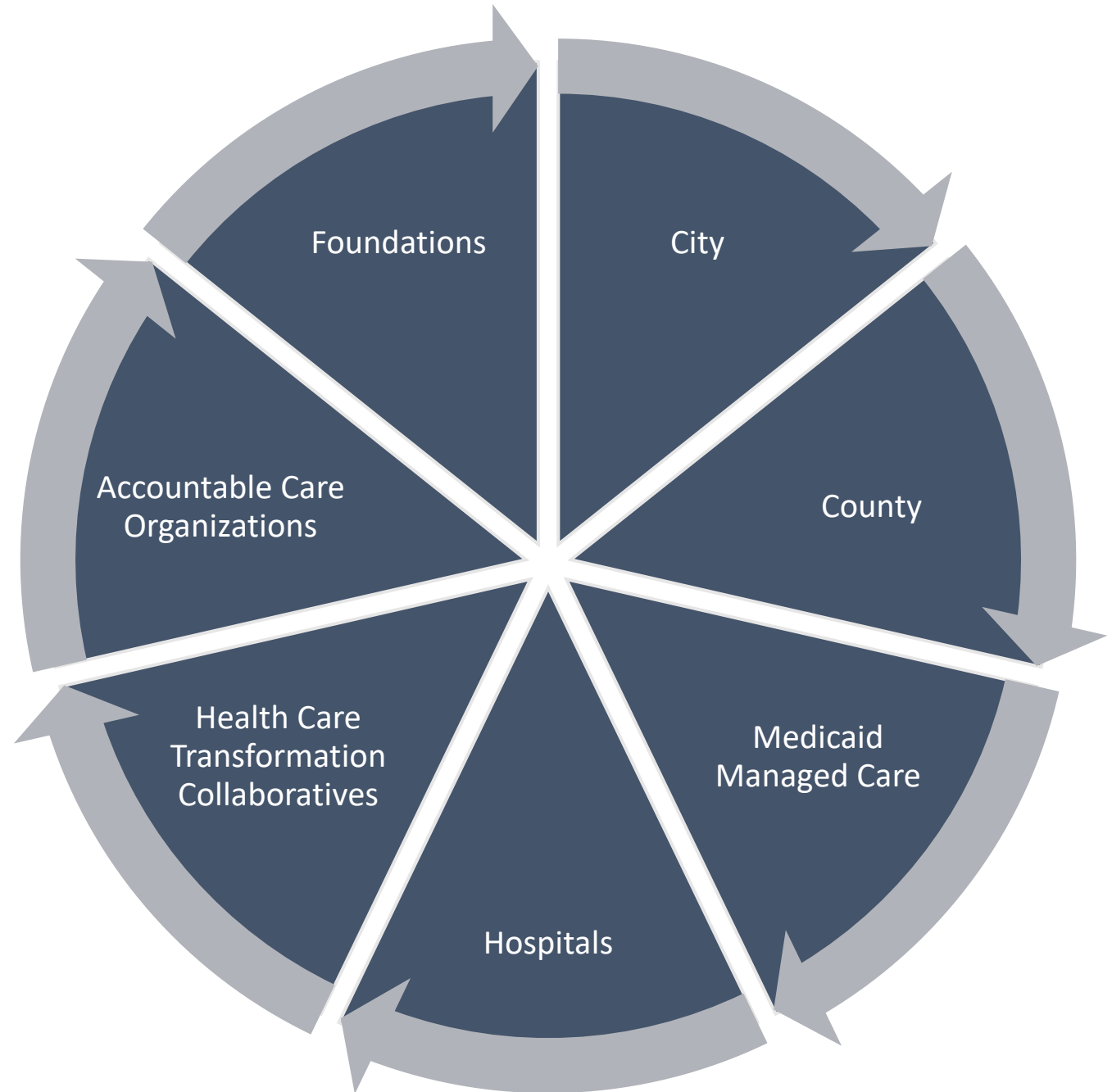


VISION

All Cook County residents who experience homelessness and interact with public crisis systems will have a stable home and access to the health care they need.

Within 10 years, the Flexible Housing Pool aims to serve 5,000 people.

Funds Raised:
\$45M
Committed



Costs

Program Cost:
\$25,000 per
household per
year

Outreach and Engagement

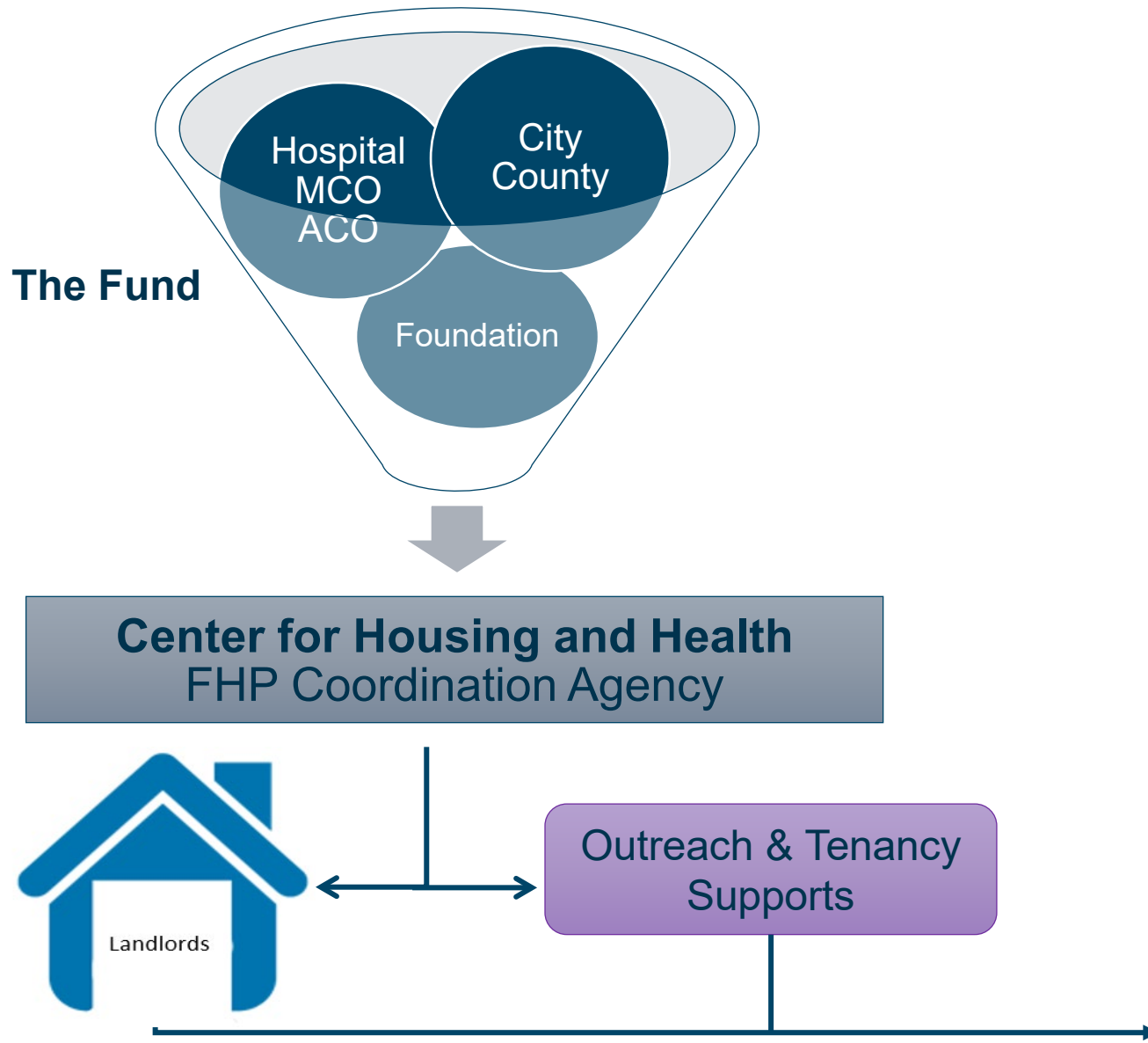
Pre-Tenancy Supports

Tenancy Supports

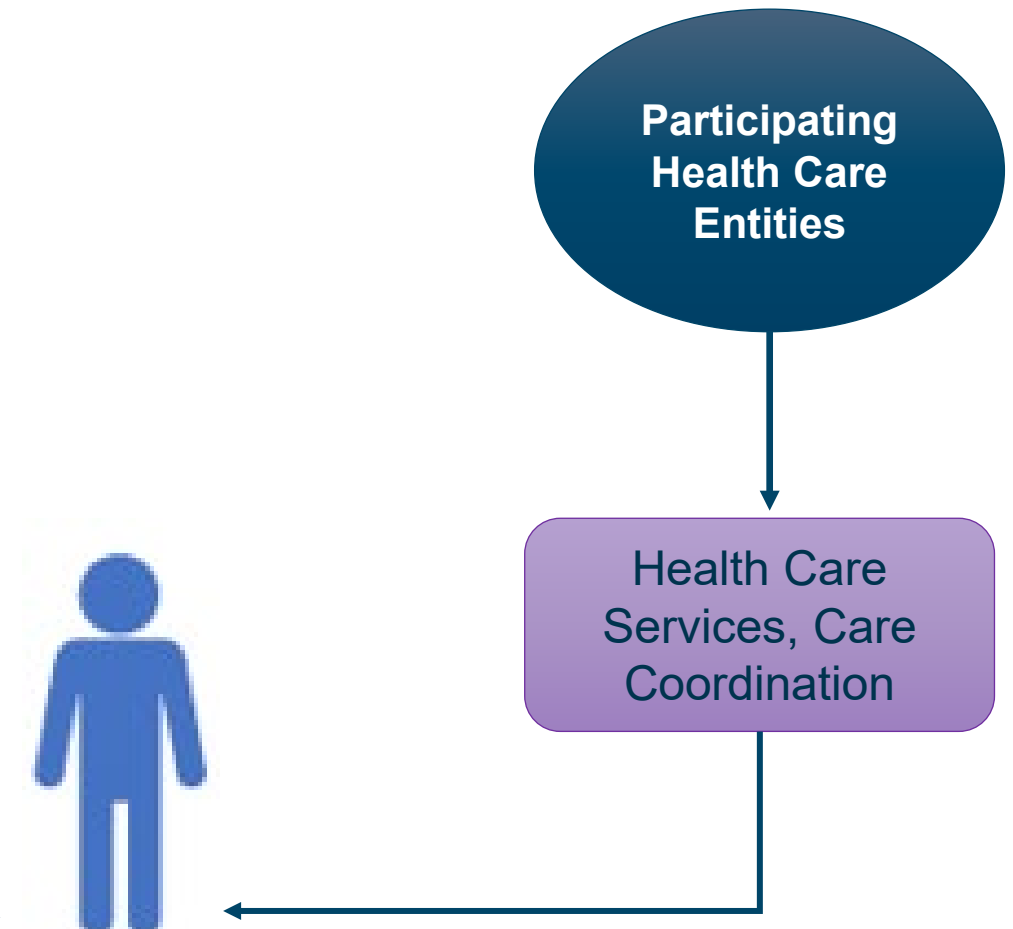
Housing Subsidy

Administration

Subsidies and Tenancy Supports



Clinical Services



Core Values

- Racial Equity
- Housing First
- Authentic Lived Expertise Collaboration
- Positive Youth Development



Goals



Housing stability
Health outcomes
Outpatient utilization
Affordable housing market



ED and Inpatient Utilization
Jail stays
Emergency shelter days
Crisis Services

Outcomes

Enrollment

- 618 households, 990 individuals

Housing Stability

- 98% housing stability for 12 months

CountyCare Utilization and Health Plan Outcomes

- MH and Ambulatory visits are declining
- ED visits are less than half
- Zero SUD/detox admissions
- Overall medical costs are down

Evaluation

Matched Control Study Results

- **30% lower mortality**
- **19% reduction ER visits**
- **33% relative risk reduction in incurring inpatient days**
- **Utilization reductions higher for those with substance abuse or mental health dx**

Preview Data: Full
Report to be Released

Flexible Housing Pool Investors



COOK COUNTY
HEALTH



Department of Family
and Support Services



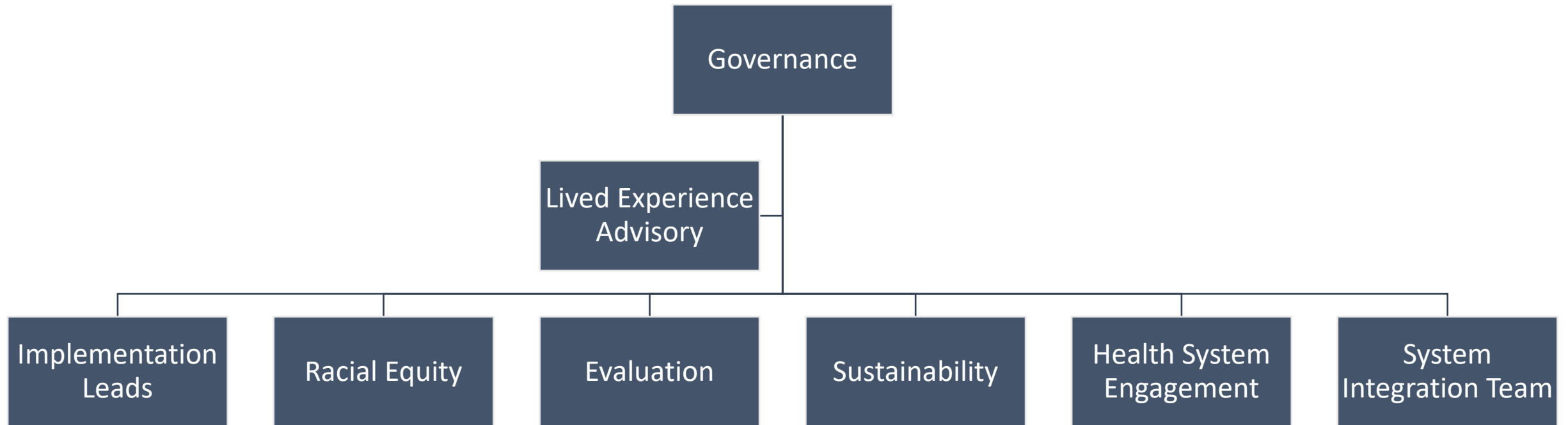
MHN ACO



JB & MK PRITZKER

Family Foundation

FHP Leadership and Oversight



Lived Expertise Leadership

Tenant Advisory Groups

- Youth
- Adult
- Workgroups
- Governance Council



+





Value of Lived Expertise Leadership

- Programs will be better!
- Those closest to the problem are closest to the solution
- Empathy and Understanding
- People want to give input into their program
 - Giving Back
 - Improving Program
- Being intentional and understanding lessons learned
- Connecting what folks are doing and learning as program leaders to working, income, and other life skills.

Partnering with Folks with Lived Expertise

- Program Design
- Board and Governance
- Hiring
- Program Improvements
- Advisory Councils
- Fundraising
- Program Feedback Surveys
- Consultants
- Advocacy

Ingredients for Successful Group

Buy In from Program leadership

- Intention and commitment

Power and Deciding vs Advising

- Driving decisions, policy, and resource allocation vs rubber stamping approval

Recruitment

- Equity, Representation
- Need to train staff to talk to people about it. Let people know that getting involved is a great and important contribution.
- Folks with lived expertise recruit group members

Ingredients for Successful Group

Be clear on what Tenants get out of it

- Skills, Money, Leadership, Giving Back, Housing

Roles and Accountability

- Clear roles and expectations
- Structure, consistency, accountability
- Shared Goals

Funding

- Pay People
- Transportation, Technology, Logistics, Staffing

Ingredients for Successful Group

Staffing

- Staffing Support
- Staffer Skills Needed

Skill Building

- Tech Support
- Facilitation and Leadership
- Systems Information: How Funding or current systems work

Start Early

- Engage early: at planning, design or fundraising



Creating a Recipe for your Community

- Ingredients – All the things a lived experience group needs to run
- Nutritional Value – Benefits and Value of Lived Expertise
- Servings – Varies, and depends on your community and funding
- Directions – planning and putting it all together into practice

GROUP ACTIVITY TIME!



Customize
ingredients and
instructions to
create your
own recipe for
Success!



Your Recipe for Success: An Activity!

- Each group is assigned an ingredient
 - What does this ingredient mean to you?
 - How will you use and implement this ingredient in your project or community?
 - What do you need to effectively use this ingredient?

THANK YOU