

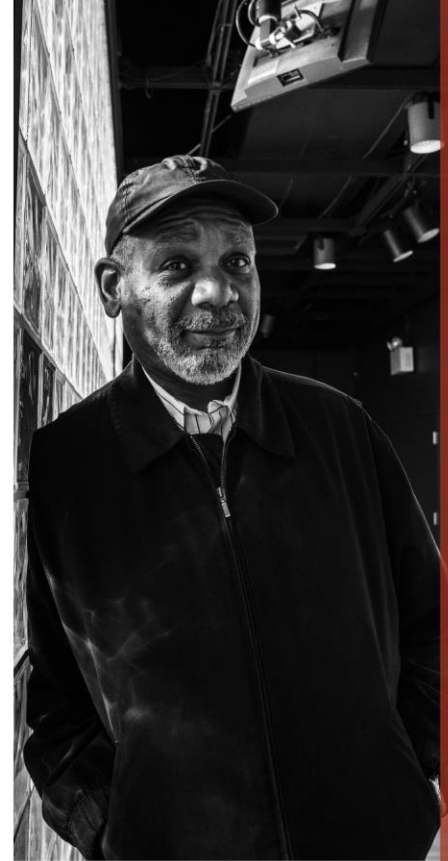


Learn From People Who Do This Work Every Day

Community Integration Endgame: Graduating from Services

Rob Wetherington
Mark Welsh

www.HousingFirstUniversity.org

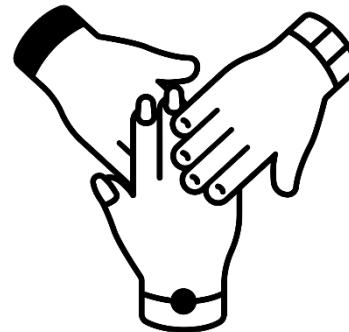


Goals and Intentions

**Review Our
Process and
Move On's
Mission**

**Examples of
hurdles and
personal
experience**

**Intersections
and
Implementation**



Learning Objectives

By the end of the session, attendees will

- ☐ Be able to define the key mission HUD's Move On program and explore where it intersects with their housing programs
- ☐ Identify notable hurdles to graduation and the importance of participant-driven supports when exiting a Housing First program
- ☐ Share insights from their perspectives as they explore what it means to graduate participants from their housing programs



Who We Are & What We Do

Pathways to Housing PA

Started in Philadelphia in 2008

8 clinical teams

Serving nearly 650 people

Onsite Clinic and MAT Program

Developed Alumni Program in 2020

First Graduation in September 2021



Who We Are & What We Do

Rob Wetherington, MA, MHA

Started working with homeless adults in 2007 and have been developing creative ways to build connections since. Master of Arts in Community Development and a Mental Health Advocate



Who We Are & What We Do

Rob Wetherington, MA, MHA

Started working with homeless adults in 2007 and have been developing creative ways to build connections since. Master of Arts in Community Development and a Mental Health Advocate



Who We Are & What We Do

Mark Welsh

Joined PTHPA in 2012

Moved to step down BCM team in

Graduated to Alumni 2020

Works for Good Haul

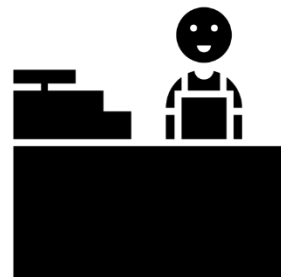


Community Inclusion and Housing First

People Living Full Lives

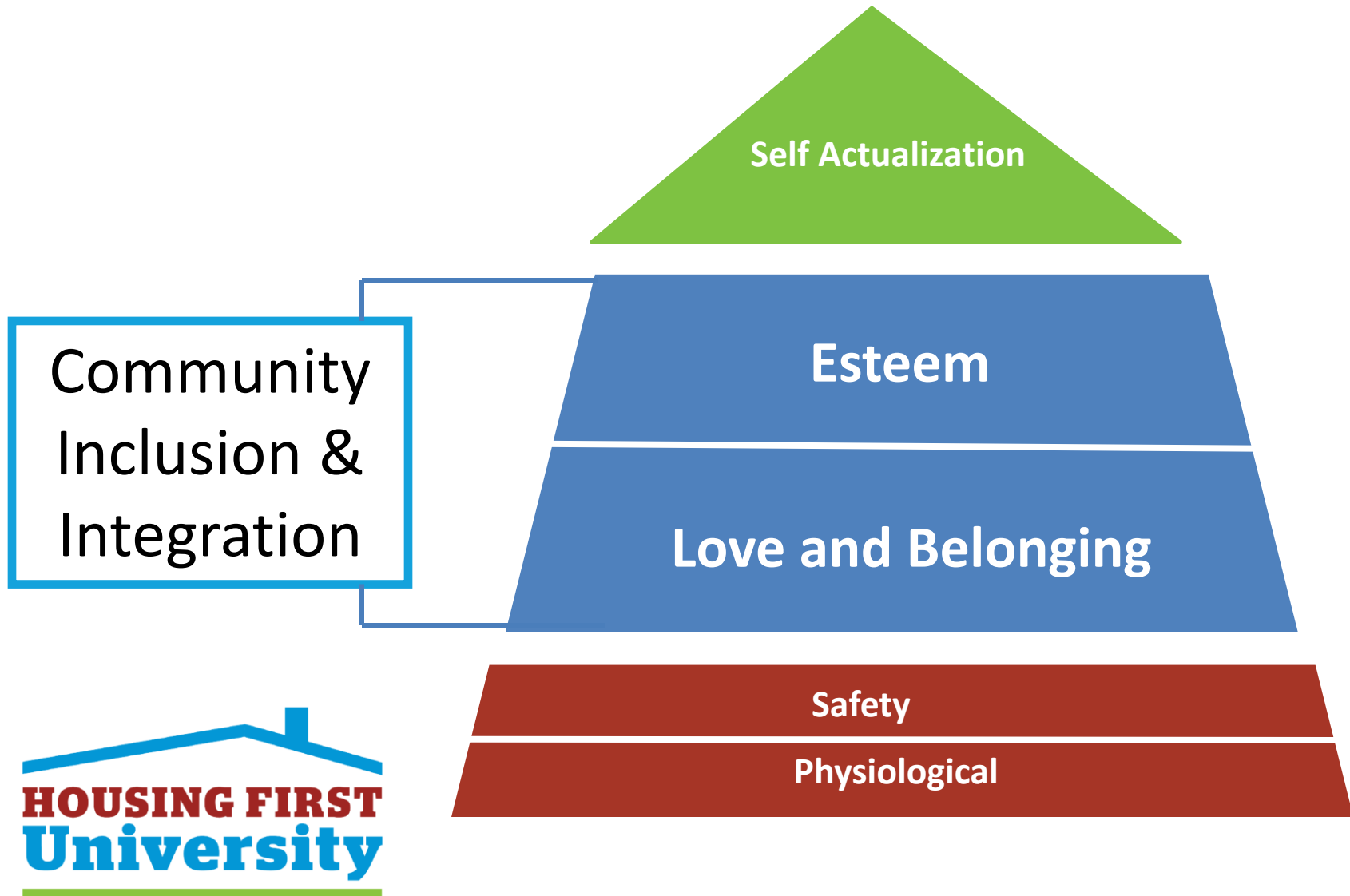
“The opportunity to live in the community and be valued for one's uniqueness and abilities, like everyone else.”

- Self-determination
- Strengths-based empowerment
- Individualized approach
- Moving on as a goal



Community Inclusion

Hierarchy of Needs



What is Move On?

Move On Mission

As part of its strategic priority to end homelessness, HUD encourages communities to explore Moving On strategies in their communities for clients in permanent supportive housing (PSH) who may **no longer need or want the intensive services offered in PSH** but continue to need assistance to maintain their housing. Moving On strategies challenge a community to **create partnerships between the Continuum of Care (CoC) and mainstream housing programs**, such as **public housing**, the **Housing Choice Voucher (HCV)** program, and **HUD-funded multifamily housing** providers.



What is Move On?

Move On Principles

- ☐ Transition is a **voluntary** process that PSH tenants choose
- ☐ **Collaboration** of mainstream housing and services must be fostered
- ☐ Connections to **community-based** supports are necessary for housing stability

What is Move On?

Move On Tools

Part of HUD's strategic initiative is to give communities tools and best practice examples that will help them implement a successful Moving On strategy. These resources include **resource inventory tools, guidebooks, case-studies, and lessons learned from other communities** who have implemented a Moving On strategy.



Checking In

What Are You Hearing?

Foundations

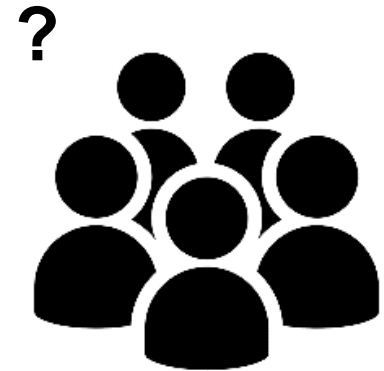
Familiarity

Findings

Engaging Participants

Following Their Lead

- ☐ Choice
- ☐ Incentives (Graduating is Hard!)
- ☐ Fostering Ownership
- ☐ Motivation & Expectations



Housing Subsidy Switch

PTHPA Subsidy

- ☐ No Readiness (HF)
- ☐ Master Lease
- ☐ Payment Regardless
- ☐ Utilities
- ☐ Maintenance

PHA Housing Choice Vouchers

- ☐ As Available
- ☐ Market Variables
- ☐ Rent Payments
- ☐ Name on Lease/Utilities
- ☐ Higher Standards



Graduation

Celebration and Ceremony

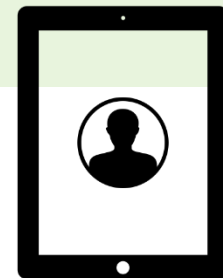
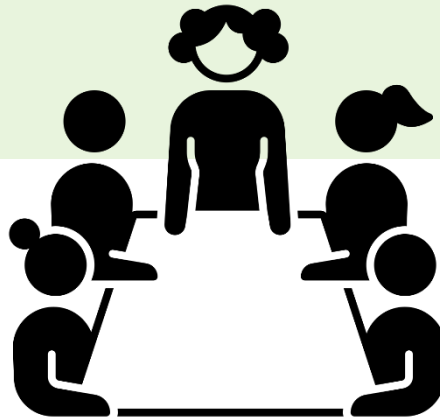
- ❑ Tangible moment of achievement
- ❑ Actual Diplomas
- ❑ Inviting community members
- ❑ Housing First works



Continued Supports

Alumni Network

- ☐ Regular meetings, outings
- ☐ Invites to Pathways Community events
- ☐ Contact with Alumni Coordinator (Christine)
- ☐ Access to clinic



Mark's Story

From Intake to Graduation

- ☐ Living unhoused
- ☐ Entering PTHPA
- ☐ Moving from Team 3 (ICM) to Team 6 (BCM)
- ☐ Alumni
- ☐ The Future

Other Stories

Edgar

- ☐ First Graduating Cohort
- ☐ Early PTHPA
- ☐ Long time housing voucher
- ☐ Flooding & Housing Issues
- ☐ Health Issues
- ☐ Resulting Supports

Francis

- ☐ Second Graduating Cohort
- ☐ Payeeship Supports
- ☐ Eviction
- ☐ New Apartment Search
- ☐ Moving
- ☐ Health Issues
- ☐ Hospice Care

HUD Move On Working Group

Suggestions To HUD to Support Implementation

Over the past two years we've been part of a working group to help implement Move On

The biggest hurdle to adoption is that, currently, Move On is unfunded

We've funded the alumni position with budget surpluses

To further expand the effort designated funding is required

I've attached a DRAFT of our Financial Budget Package recommendations

I've also made a DRAFT of an assessment tool available



Financial Budget Package DRAFT

Need	Average cost	# assisted	Total Need	
Security/First/Last	\$ 4,500	50	\$ 225,000	
Furniture Bank referral and delivery fee	\$ 225	50	\$ 11,250	
Application fees - 2 apts	\$ 70	50	\$ 3,500	
Background checks - criminal/credit	\$ 67	50	\$ 3,350	
Utility arrearages	\$ 1,000	25	\$ 25,000	
Judgments	\$ 750	25	\$ 18,750	
Moving costs	\$ 125	50	\$ 6,250	
Renter's insurance (one year)	\$ 200	50	\$ 10,000	
Case Management - 6 months	\$ 2,000	50	\$ 100,000	
Subtotal			\$ 403,100	
Administration costs 10%			\$ 40,310	
Total Request			\$ 443,410	
Assistance per person			\$ 8,868	
Benefits				
50 new spots in SH to move people out of shelter and/or off the streets				
Existing annual expenses at different levels of service			Individual	50 clients
On the street			\$ 75,000	\$ 3,750,000
Pathways - Housing/Services			\$ 35,000	\$ 1,750,000
Pathways - ACT services			\$ 19,000	\$ 950,000
Pathways - BCM services			\$ 8,000	\$ 400,000
Recommendations:				
1. Seek \$850,000 for a two year pilot program from the following sources:				
- PHLCares				
- Scattergood Foundation				
- Hospital/MCO Foundations				
2. Develop a Flexible Housing Voucher Fund - similar to Chicago				

Questions and Answer



Group Discussion

PRESENTERS:



Rob Wetherington

Director of Community Inclusion & Advocacy
rwetherington@pthpa.org

Mark Welsh

Good Haul <job title> and PTHPA Alum
email?





Learn From People Who Do This Work Every Day

To inquire about training, technical assistance, or consulting opportunities, please contact:

Felicia Roche MHC, M.A.

Director of Training & Technical Assistance

Training@PathwaystoHousingPA.org

215-390-1500 ext. 1708

www.HousingFirstUniversity.org

