

Make a difference – build your career at Metro North Health.

Metro North Health is committed to providing a diverse and inclusive workplace for all employees.



Do you want to make a difference in your community?

We don't only employ nurses, midwives, doctors or other health professionals. All cultures and communities are welcome as we reflect the diversity of the Metro North community we serve.



Nursing/ Midwifery

*Certificate/ Diploma/
University Qualifications



Medical

* University Qualifications



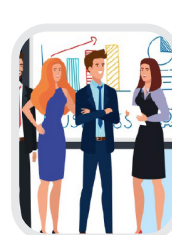
Allied Health

*University Qualifications



Clinical Area Support

*Certificate/ Diploma
Qualifications



Administrative and Professional and Operational Technical

*Certificate/ Diploma
Qualifications



*Certificate/ Diploma/
University Qualifications

Assistant in Nursing
Enrolled Nurse
Registered Nurse
Clinical Nurse
Clinical Facilitator
Clinical Nurse
Consultant
Nurse Educator
Nurse Manager
Nurse Researcher
Nurse Unit Manager
Nurse Practitioner
Midwife

Anaesthetist
Endocrinologist
Gastroenterologist
Geriatrician
Gynaecologist
Haematologist
Infectious Disease
Neonatologist
Obstetrician
Ophthalmologist
Oncologist
Orthodontist
Orthopaedist
Psychiatrist
Radiologist
Surgeon
Urologist

Anaesthetic
Technician
Audiologist
Cardiac Scientist
Clinical
Perfusionist
Dietician
Epidemiologist
Nuclear Medicine
Technologist
Podiatrist
Polysomnographer
Physiotherapist
Psychologist
Social Worker
Sonographer
Speech
Pathologist
Radiographer
Occupational
Therapist
Radiographer

Allied Health
Assistant
Assistant in
Nursing
Dental Assistant
Dental Technician
Informatics
Assistant
Intake Officer
Nutrition Assistant
Mental Health
Worker
Orthopaedic
Technician
Pharmacy
Assistant
Physiotherapy
Assistant
Plaster Technician
Research
Assistant
Social Work
Assistant
Therapy Assistant

Administration
Coordinator
Business Support
Officer
Communications
Officer
Environmental
Support Officer
Executive Support
Officer
Human Resources
Business Partner
Legal Advisor
Patient Liaison
Officer
Project Manager
Inventory Officer
Switchboard
Officer
Recruitment and
Retention Officer
Work Health &
Safety Officer

Analyst
Business
Application
Specialist
Change Analyst
Data Quality
Educator
Information
Systems Officer
Senior Director
Solutions
Architect
Test Manager
Web Developer
Coding Specialist
Enterprise
Architect