



## **Journey to Hybrid Cloud (Azure Backup & Adoption)**

Catherine Tan and Victor Wei

Digital Solutions – Storage Management Services





20TB data

Cool storage

A million dollar  
question..

1 year  
retention

(max) 1 TB  
retrieval per  
month

Express  
Metered (1GB)



Data  
Centres

Traditional  
Backup

Tape  
Libraries

Media  
Encryption



8PB

159TB NAS

987 VMs

1yr / 7 yrs.



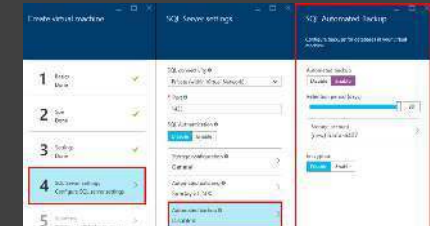
**and...WHY?**



- 
- Organisation Strategy
  - Our digital campus is our 3<sup>rd</sup> largest campus and fastest growing campus
  - Deliver MORE value
  - Future-proof

# Things we have tried....

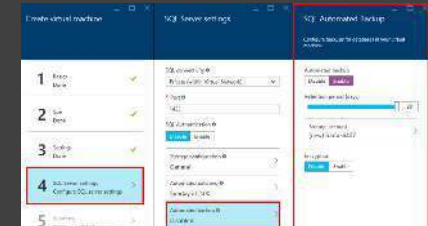
1. MS Azure Backup Server (MABS)
2. Cloud to cloud replication
3. Direct to cloud e.g. cloud connector
4. Storage gateway
5. The native IaaS VM backup



# Things we have tried....

....

6. Logic Apps
7. Third party e.g. FluentPro for MS Project Online
8. Backup gateway
9. Microsoft Azure Site Recovery service (investigated)
10. Leverage on 'zerto' capability (investigated)







## Things you need to know...

1. Information governance
2. Cost optimisation – setup 'alert' on budget !!!!!
3. Service management via 'tag'
4. Network connectivity
5. Cybersecurity concerns
6. Readiness - don't force the process
7. Be prepared to lose your magic touch...

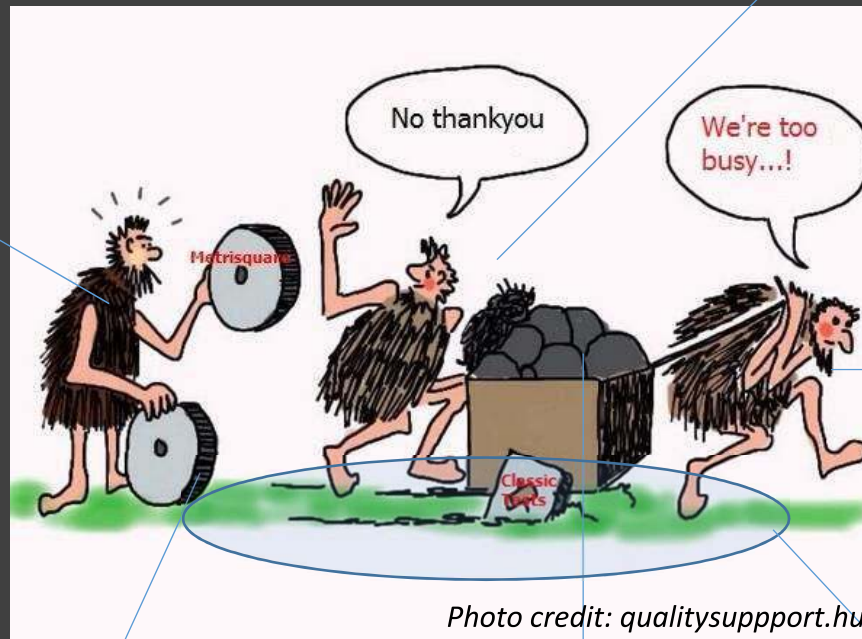
# It is different



# Things to learn....

Service  
broker

Help (where?)



Strategic  
Direction

Innovate

Know our data

Governance and  
Regulations

Update firewall configurations that whitelist Logic Apps IP addresses by September 30, 2018

You're receiving this email because one or more of your logic apps could be affected by an upcoming change.

To improve traffic flow, we're adding new outbound IP addresses for Azure Logic Apps. If you have firewall configurations that whitelist Logic Apps IP addresses, you'll need to update them to keep your logic apps running as expected.

If you don't have this type of firewall configuration, you won't be affected by change and don't need to take any action.

### Required action

Update your firewall configurations to include the [IP addresses in this list](#) by Sep 30, 2018.

If you have questions, please [contact us](#).

<https://azure.microsoft.com/en-au/status/>

[illegible]

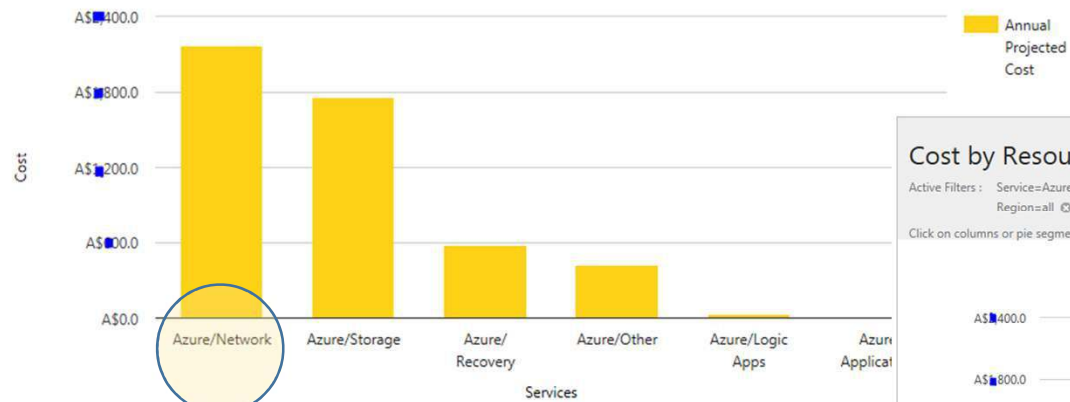
## Cost by Services

Active Filters : Policy=Standalone

Click on columns or pie segments for granular view.

Projected Cost:

AS\$4,000.00



Azure/Network

VPN | GW1

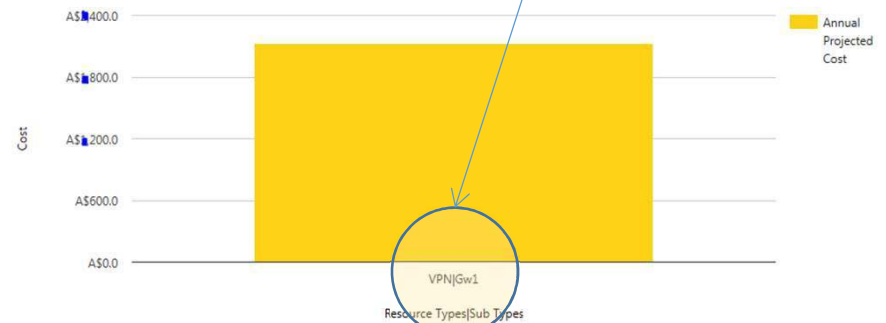
## Cost by Resource Types and Sub Types

Active Filters : Service=Azure/Network Account Name=ITI Backup  
Region=all Availability Zone=N/A Policy=Standalone

Click on columns or pie segments for granular view.

Projected Cost:

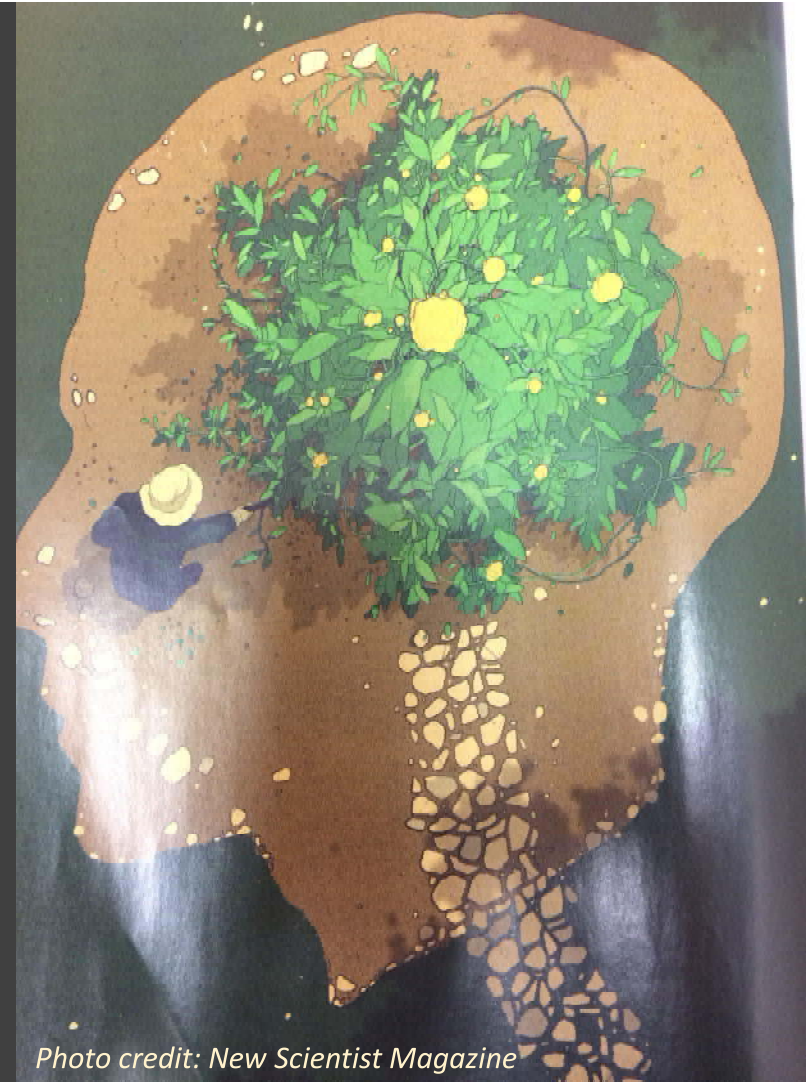
AS\$123.00





To change the  
game...

Change our  
mindset



*Photo credit: New Scientist Magazine*





**Data intelligence**

**Combat ROT data**

**Backup.. -> MORE**

**Global management**

**Public cloud backup**

**50% offsite to cloud**

**Multi-cloud ready**

**Mature the service**

*When you can't change the direction of the wind, adjust your sails - H. Jackson Brown, Jr.*



*Photo credit: alanmason.wordpress.com*

QuestNet2018 (Twitter: #QN18Cairns)

Catherine Tan (catherine.tan@griffith.edu.au)

Victor Wei (v.wei@griffith.edu.au)

## References:

[Microsoft Risk Management Guide for the use of Azure for Protected classified workloads.](#)

[Information Privacy Act 2009](#)

[MARS \(Microsoft Azure Recovery Service\) Agent](#)

[MABS \(Microsoft Azure Backup Server\)](#)

[Best Practices for Cloud Service Governance and Management | Gartner Milind Govekar](#)

Predicts 2018: Storage I Gartner ID:G00346523

How to leverage Public Cloud IaaS for Backup and Recovery | Gartner ID: G00336687

Magic Quadrant for Data Centre Backup and Recovery Solutions | Gartner ID: F00311191

# THANK YOU