

Summer 20 SCHOOL 25

A residential learning experience

14-15 February 2025

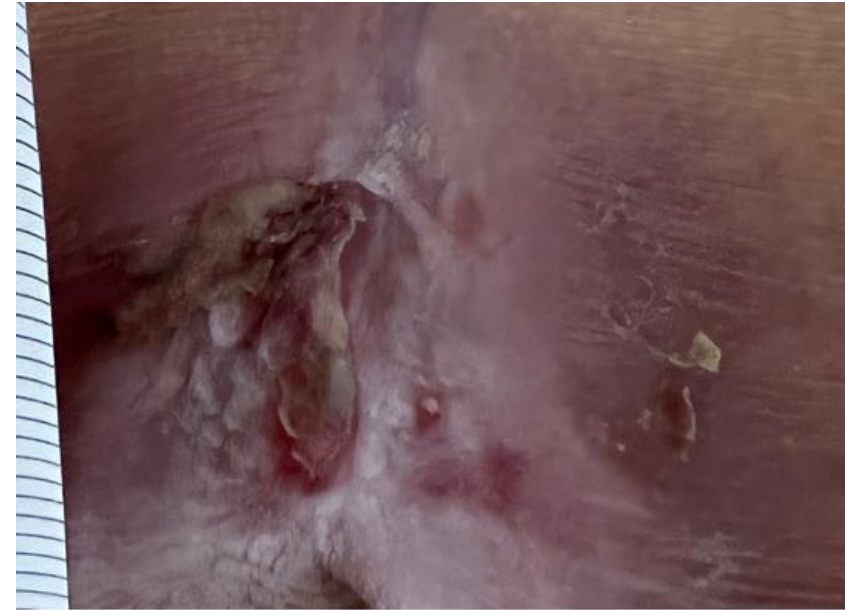
Novotel Geelong, VIC

Chronic Oedema

More than just fluid

Scope of practice –the limitations and requirements in 2025

Summer **20**
SCHOOL 25
A residential learning experience

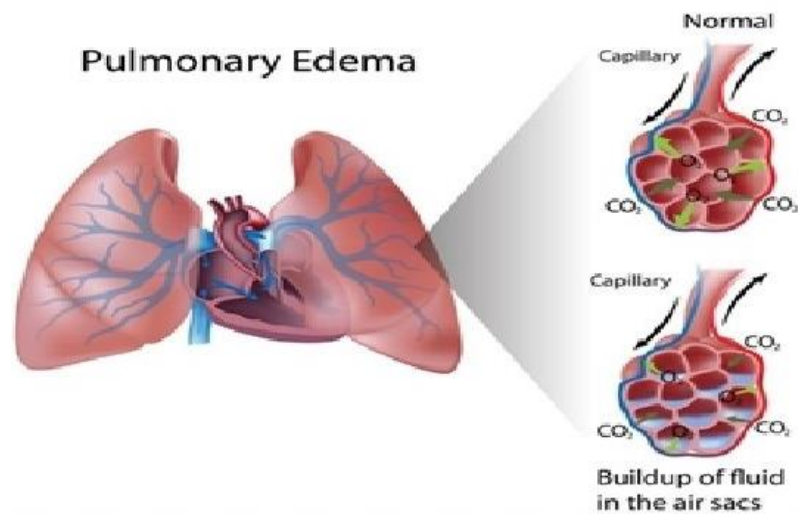
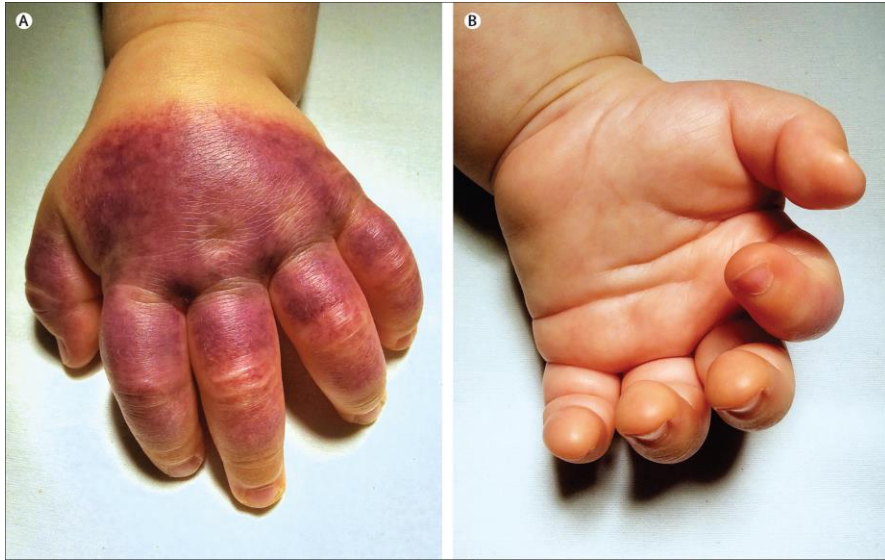


Is it only relevant to consider chronic oedema?

Fig 3. Chronic oedema has resulted in skin fibrosis and other skin changes



Consequences of acute oedema



Summer 20 SCHOOL 25

A residential learning experience

14-15 February 2025

Novotel Geelong, VIC

Do you think we consider all aspects of oedema ?

Pain, discomfort, exudate, malodour, embarrassment, wound dehiscence, delayed wound healing

www.lass.org.au

**A lipoedema
awareness
film**

AUSTRALIAN WOUND & SKIN ALLIANCE

Summer **20**
SCHOOL 25

A residential learning experience

14-15 February 2025

Novotel Geelong, Victoria



www.AWSAlliance.au