



2022 NZSEE
CONFERENCE

Te Aohurihuri, ngā piki me ngā heke
Designing for Uncertainty

Challenges and Opportunities

27–29 APRIL 2022 • ONLINE

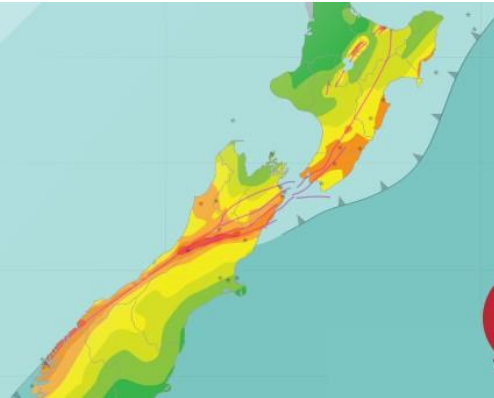


Image: NSHM

NZSEE 2022 Online Conference Programme (at 26 April 2022)

WEDNESDAY 27 APRIL					
11.00 – 11.30	Mihi Whakatau Kelvin Tapuke Opening Annie Scott, NZSEE 2022 Convenor Introduction Helen Ferner, NZSEE President				
11.30 – 13.00	Plenary: Designing for Uncertainty Andy Thompson, Michelle Grant, Tim Sullivan Chair: Helen Ferner				
13.00 – 14.00	Break				
14.00 – 15.00	Poster Session				
15.00 – 16.15	1A: Analysis Techniques Chair: Quincy Ma	1B: Civil Structures Chair: Tori Shrimpton	1C: Low Damage Design Chair: Charles Clifton	1D: Earthquakes and Geophysics Chair: SR Uma	1E: Timber Chair: Lauren Vinnell

15.00 – 15.12	Validity of conventional single mode pushover analysis in multi-mode systems Stuart Orchard and Ruozi Zhang	Earthquake Design Loads on Retaining Walls John Wood	BRB Structure Design Considerations Gregory MacRae	Depth and Shape of the Basement Surface Beneath Wellington City, Based on Gravity and Seismic Constraints Tim Stern	Case Study on Cantilever CLT Shear Walls with Bolted Hold-downs for Earthquake Resistance Ben Moerman
15.12 – 15.24	Retaining wall design - SESOC Geoff Bird	Seismic Isolation of Bridges: Case Studies Mohammed Mohammed	Application of resilient rocking cores in low damage mass timber structures: A case study Ashkan Hashemi	Interim Results from Empirical Ground Motion Model Evaluation for the NZ National Seismic Hazard Model Update Robin Lee	Ductile timber connections: Understanding the factors contributing to their ductility Pierre Quenneville
15.24 – 15.36	Investigation of Influential Factors on Yield Strength of Lead Rubber Bearings M Masoud Pourmasoud	Sustainability in enhancing the resilience of major route in Wellington Sivasith Arumugam	Effect of Energy Dissipation on Seismic Response Masoumeh Farshbaf	Seismic structural monitoring in Wellington using advanced seismological techniques Caroline Francois-Holden	Repair and Reinstatement of Douglas-fir CLT Hold-down Connections using Mixed Angle Self Tapping Screws Thomas Wright
15.36 – 15.48	Dealing with uncertainty in prediction of lateral spread Vincent Smith and Stuart Palmer	Modelling of nonlinear behaviour of steel bridges using vibration measurements Niusha Navabian	Prediction of Demands on Non-Structural Components in Base-Isolated Structures Kieran Haymes	The Damaging Power of Earthquakes and the Role of Duration David Hopkins	Seismic retrofit of historic timber structures: Uncertainties and adaption on site Matt Davies
15.48 – 16.00	Modelling uncertainty induced by plastic hinge length in lumped-plasticity analysis of RC structures Junan Mou	Reclamation Resilience Improvement at CentrePort, Wellington New Zealand James Munro	Seismic response of a base-isolated building under pulse-like near-fault ground motions Ali Rad	Dynamic site characterisation of the Hawke’s Bay sedimentary basin using H/V and surface wave methods Andrew Stolte	Mass timber design – the tricky bits: Canadian case studies for acoustic and vibration solutions from a structural engineer Andrew Dunbar
16.00 – 16.15	Q&A with all presenters	Q&A with all presenters	Q&A with all presenters	Q&A with all presenters	Q&A with all presenters

16.15 – 16.25	Break			
16.25 – 17.25	2A: Geotechnical Chair: Merrick Taylor	2B: Existing Structure Chair: Tony Holden	2C: Case Study Chair: Bruce Curtain	2D: Societal Expectation Chair: Julia Becker
16.25 – 16.37	Liquefaction potential of sand-gravel mixtures: experimental observations Abilash Pokhrel	The role of in-plane strengthening within a proposed non-specific design approach to seismic improvement for URM buildings Hamish Tocher and Matthew Cutfield	A case study of Soil-Foundation-Structure-Interaction for aseismic design of wind turbines. Gopal Adhikari	Social Influences on Behavioural Response to Earthquake Shaking Lauren Vinnell
16.37 – 16.49	New Revision of the National Design Guidelines for Ground Improvement Alexei Murashev	Seismic strengthening of the Seatoun tunnel Paul Wymer	A Bespoke Analytical Methodology for Seismic Safety Assessment of Spillway Gates: Case Study of Waipapa Dam Spillway on the Waikato River Umair Siddiqui	Integrating Māori Perspectives into Community Resilience Frameworks for the Built Environment Megan Boston
16.49 – 17.01	Sustainability Aspects of Earthquake Geotechnical Engineering in New Zealand Alexei Murashev	Seismic Performance of Precast Hollow-core Units Seated Within the Plastic Hinge Region Mohamed Mostafa	Geotechnical Challenges and Design Solutions for Yarrow Stadium Redevelopment Paulo Alves	The shaky south (or not): towards improving communities understanding of earthquake risk in Otago and Southland David Johnston
17.01 – 17.13	Liquefaction-Induced Parabolic Subsidence Method: A rationale method for structural engineers to design waffle slabs in accordance with MBIE Guidance Fabio Parodi	Mechanical Anchor Shear Reinforcing as a Seismic Retrofit Technique for Hollow-Core Floors Robert Hudson	An Integrated Resilience Strategy for Wellington's Land Transport System Pathmanathan Brabhaharan	Q&A with all presenters
17.13 – 17.25	Q&A with all presenters	Q&A with all presenters	Q&A with all presenters	

THURSDAY 28 APRIL				
11.00 – 12.00	Plenary: From new Seismic Hazard models to new Design Practice – challenges and opportunities Matt Gerstenberger and Alistair Cattanach Chair: Ken Elwood			
12.00 – 12.10	Break			
12.10 – 13.25	3A: Analysis Techniques Chair: Andy Thompson	3B: Concrete Chair: Rajesh Dhakal	3C: Low Damage Design Chair: Peter Holden	3D: Risk Chair: Caroline Holden
12.10 – 12.22	Fast and Furious? Drive your analysis vehicle carefully Arun M. Puthanpurayil	Study on floor-slab effect of a 2-storey low-damage concrete wall building Anqi Gu	Assessing the impact of acceleration-sensitive components on the seismic losses of multi-storey office buildings Michael Williamson and Luis John	Mainstreaming building code practice and risk management principles towards disaster risk reduction Amarachukwu Nwadike
12.22 – 12.34	Experimental and Analytical Evaluation of Different Failure Modes Associated with Self-centring Braces Syed Mohammad Yousef-Beik	Code requirements for column confinement with a view on drift Max Dawson	Benchmarking the Seismic Performance of Code-Conforming Buckling Restrained Braced Frames Sistla Saiteja	Risk-Targeted Framework for Seismic Design: Maintaining Functionality Anne Hulsey
12.34 – 12.46	Method for incorporating seismic hazard into the traditional Life Cycle Assessment for evaluating seismic performance Rosa Gonzalez Espinel	Retrofit Solution for Ductile Reinforced Concrete Moment Frame with Un-topped Pre-cast Concrete Floor Structure Using Fluid Viscous Dampers Amir Moshref	Accounting damping, uncertainties related to performance, modelling and design methods for structures with dampers Setu Agarwal	Rating Houses for Strength and Damage: A simple App for owners and insurers David Hopkins
12.46 – 12.58	A Review of Guidance for Tsunami Loading on Buildings Henry Till	A novel solution for retrofitting concrete structures with resilient connections: a case study Ashkan Hashemi and Terry Dawson	Archives Wellington Lease – Heke Rua Archives – 2 Aitken Street Tessa Beetham	Advancing NZ Hospital Seismic Readiness: Creating a Post-Earthquake Functionality Dashboard Bethany Mayer

12.58 – 13.10	Effects of explicit representation of buildings in tsunami inundation and loss modelling Vinod Sadashiva	Residual capacity of earthquake-damaged reinforced concrete walls Gonzalo Muñoz	Elastic Design ($\mu=1.0$) of Damage Avoidance Structures Farhad M. Darani	Monitoring technologies to manage landslide risk to transportation routes in the Lower North Island David Stewart
13.10 – 13.25	Q&A with all presenters	Q&A with all presenters	Q&A with all presenters	Q&A with all presenters
13.25 – 15.30	Break			
15.30 – 17.00	Plenary: Resilient Building Project Charlotte Brown, Hugh Cowan, Shannon Abeling, Helen Ferner Chair: Hugh Cowan			
17.05 – 18.00	NZSEE AGM Helen Ferner, NZSEE President			

FRIDAY 29 APRIL	
11.00 – 12.30	Plenary: Looking to the future for seismic design – Considerations to improve NZ resilience Didier Pettinga, Charlotte Toma, Pathmanathan Brabhakaran, Max Stephens Chair: Annie Scott
12.30 – 13.30	Break
13.30 – 14.55	Keynote: From Ductility to Repairability - Evolution of Building Design in the Wake of the Christchurch Earthquake Ken Elwood Chair: Jo Horrocks Closing Poroporoaki