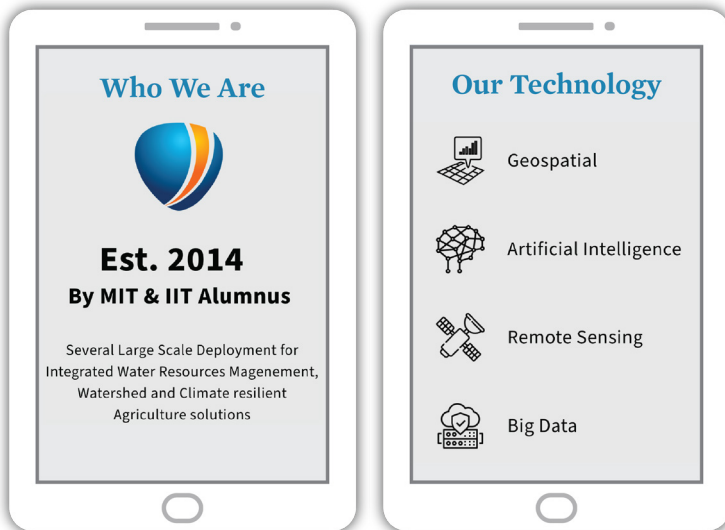


AI Driven Watershed Planning and Management



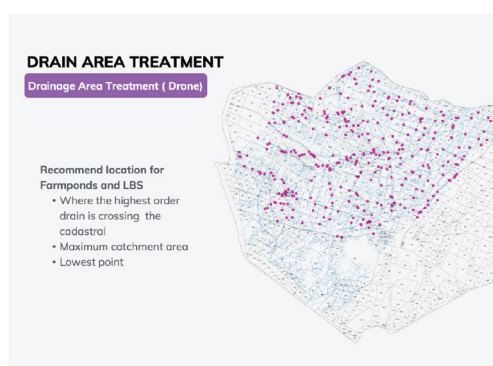
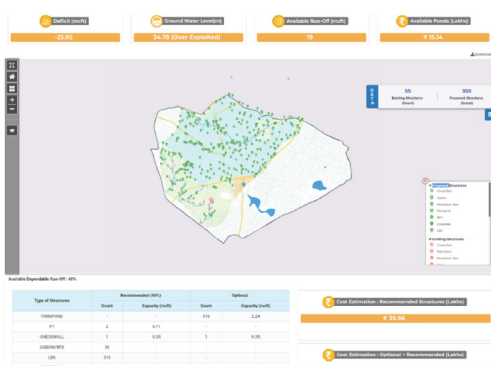
Watershed Management System

Watershed management aims to care for natural resources in a way that supports human needs for water, food, fiber, energy, and habitation. At the same time, it supports other agreed attributes linked to recreation, aesthetics, and/or ecological function.

Our Solution

Our Watershed Management System is an integrated decision support solution that helps the public policy planners, administrators, watershed management officials, NGOs, and citizens to plan their watershed activities more scientifically and maximize the impact. The solution has five components:

- **Identification of watershed with deficit:** Watershed water budget (or village water budget) helps in micro-level planning of water management.
- **Identifying available runoff to conserve without impacting the watershed and downstream:** The rainfall to run-off model is important in estimating the amount of the runoff generated from rainfall on a daily basis. This will be used by the network water conservation model to estimate the amount of the runoff that is conserved and runoff that is available for taking up additional water conservation activities.
- **Site suitability to identify the right intervention:** These are identified based on the weighted overlay method using different GIS layers such as slope, geology, geomorphology, soil texture, and land use land cover (LULC), and the last 30 years of rainfall data.
- **Workflow management:** The GIS-based decision support system streamlines the process of planning, prioritizing, and sanctioning construction of water and soil conservation structures based on fund availability and cost estimation of the proposed structures.
- **Watershed audit:** This helps in auditing the location, structure type, and dimensions of sanctioned/existing water and soil conservation structures, and afforestation activities and report the deviations. This can be done using drone surveys or remote sensing data and feed important input for impact assessment.



Pavilion

20 October, 2:00–2:30 p.m.
(GMT +8, Manila time)

[Join the Zoom interactive session](#)
(passcode: #eMarket2)



To know more about our Smart Water Technology

BROCHURES

- [Watershed](#)
- [Corporate Profile](#)
- [Water Resources Information and Management System](#)

VIDEOS

- [APWRIMS Testimonial](#)
- [Integrated Watershed Planning and Management Tool from Vassar Labs](#)
- [Using Tech for Better Water Management in Conversation With Lakshmi Prasad Putta of Vassar Labs](#)

For inquiry, contact:

Amit Kumar Mishra
Marketing Head

Email
amit@vassarlabs.com

Website
<https://www.vassarlabs.com/>