

# ASIA AND THE PACIFIC TRANSPORT FORUM 2024

## CLEAN TRANSPORT FOR ALL

14-17 May 2024 | ADB Headquarters, Manila, Philippines



# Anhui Province Green Port and Shipping Demonstration Project

Yang Lu  
Transport Specialist  
SG-TRA, ADB

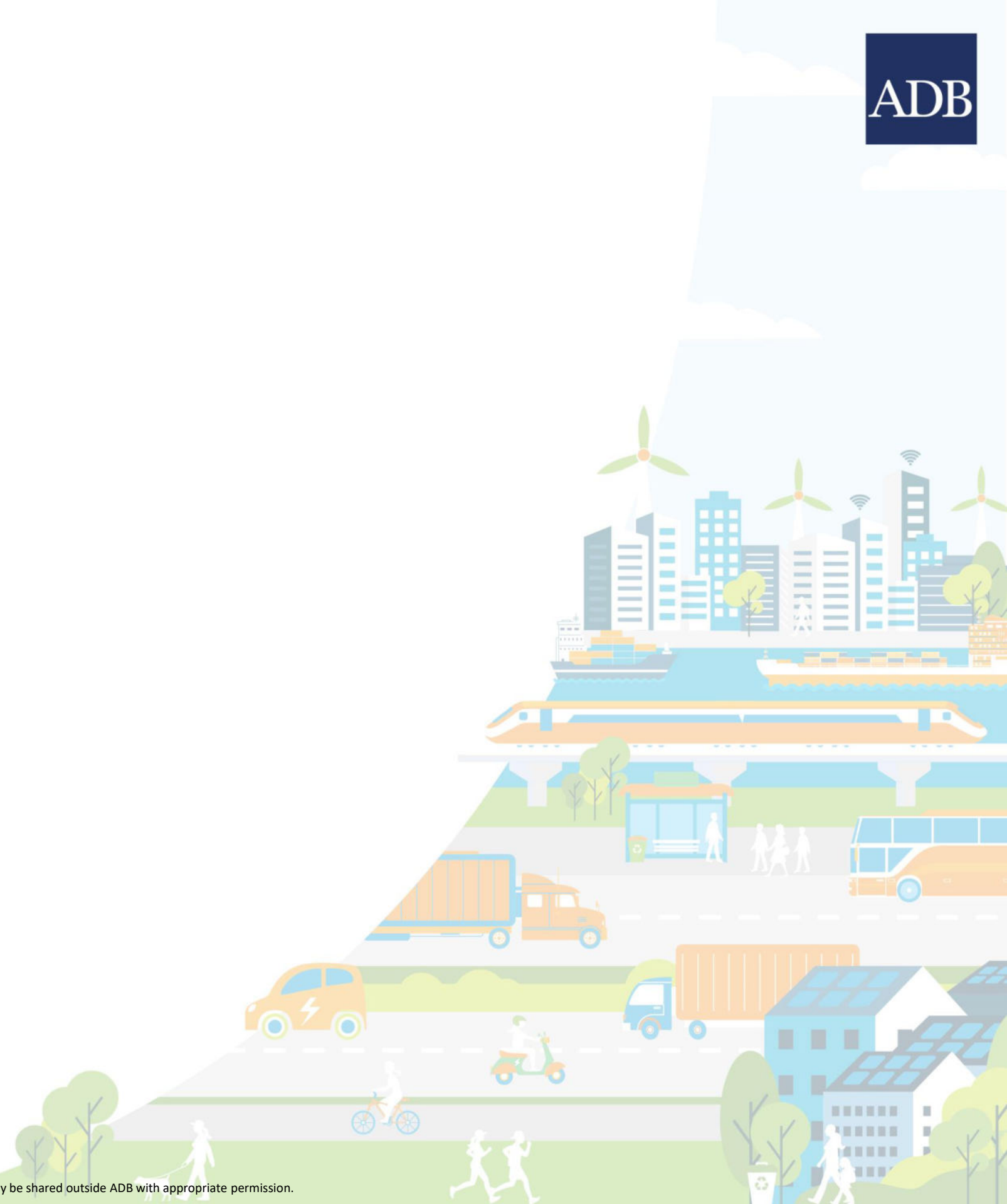
Presentation prepared based on material provided by the Anhui Provincial Port and Shipping Group Corporation Limited





# Content

- Project overview
- Project components
- Highlights on green and smart port development



# Project overview

- the construction of three ports in Anhui, PRC
- the demonstration of clean energy container shipping route
- the promotion of green and smart port and shipping development
- institutional capacity building and knowledge development





# Project overview (cont.)

## Lu' an Huoqiu Port Zhouji Wharf

Located in Huoqiu County, right bank of Huai River, about 91 km upstream of the Jianghuai Canal

## Hefei Paihe International Logistics Park Port Phase II

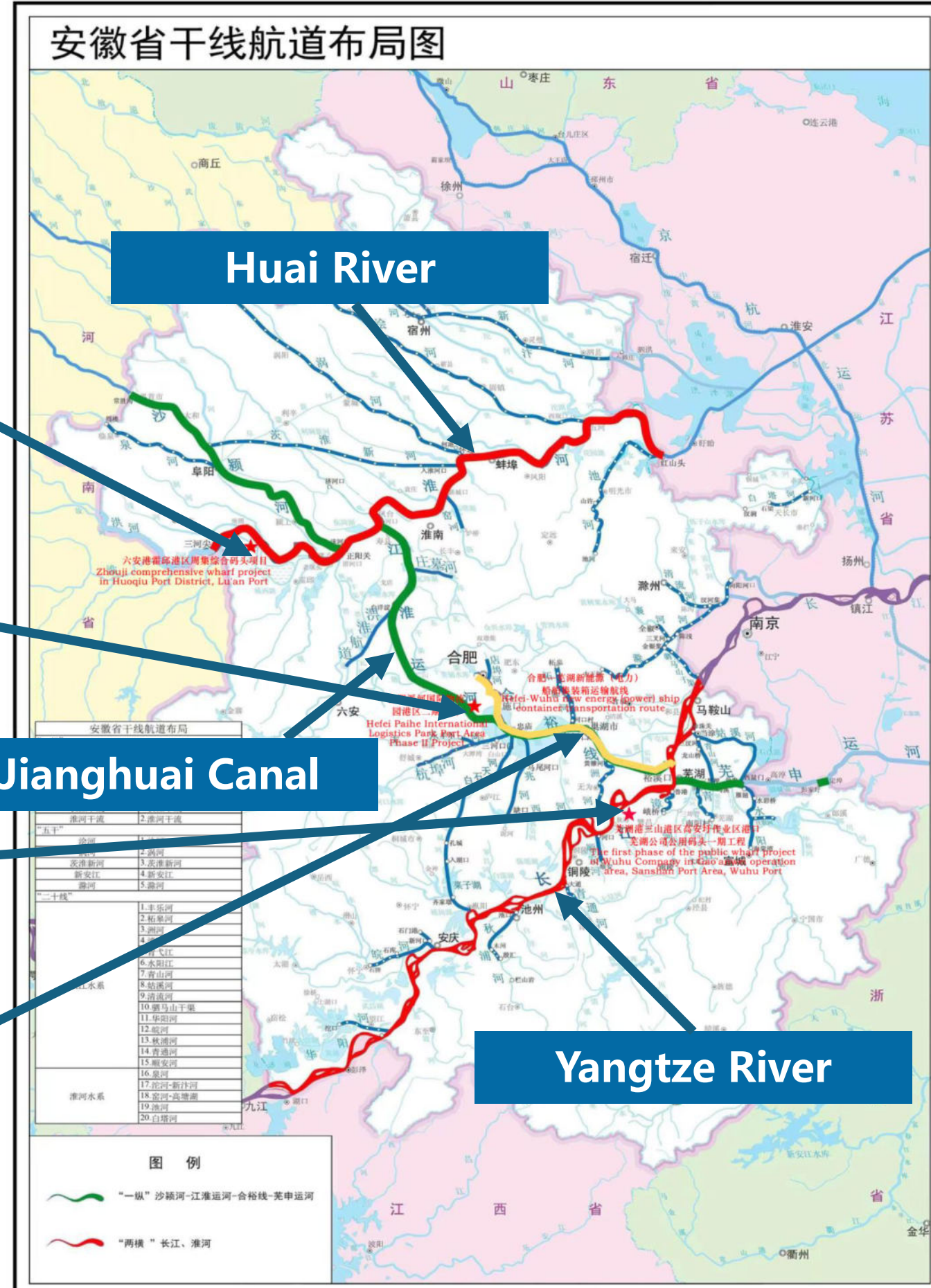
Located in Hefei Economic and Development District, left bank of Paihe River, about 13.5 km upstream of Chao Lake

## Wuhu Sanshan Port

Located in Wuhu Sanshan Economic and Development District, right bank of Yangtze River, about 4.8 km upstream of the Wuhu Yangtze River Second Bridge

## Hefei-Wuhu Clean Energy Container Shipping Route

The route connects Hefei to Wuhu via Jianghuai Canal, Chao Lake, and Yangtze River, with one-way distance of 145 km

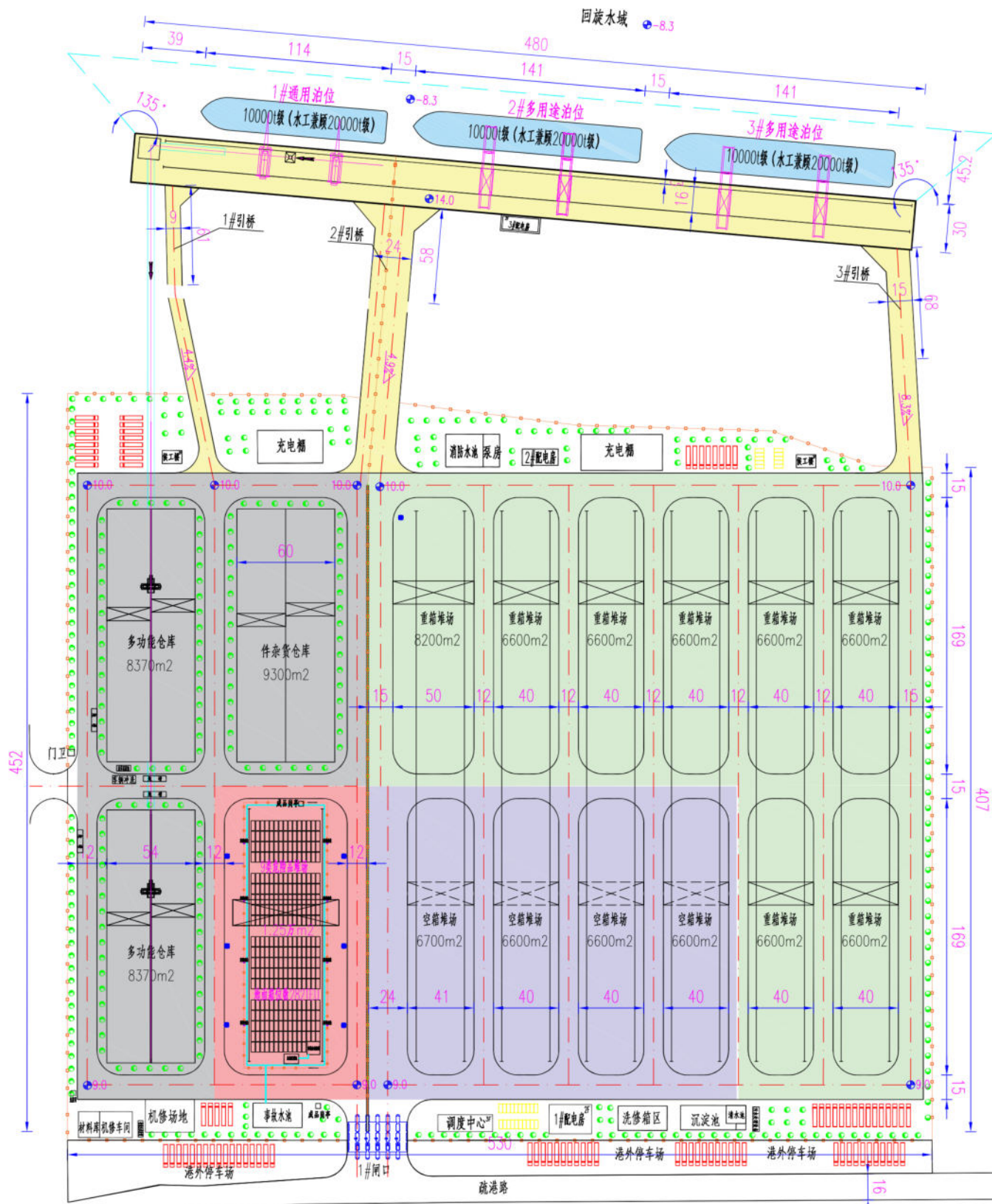




# Project component

## Wuhu Sanshan Port

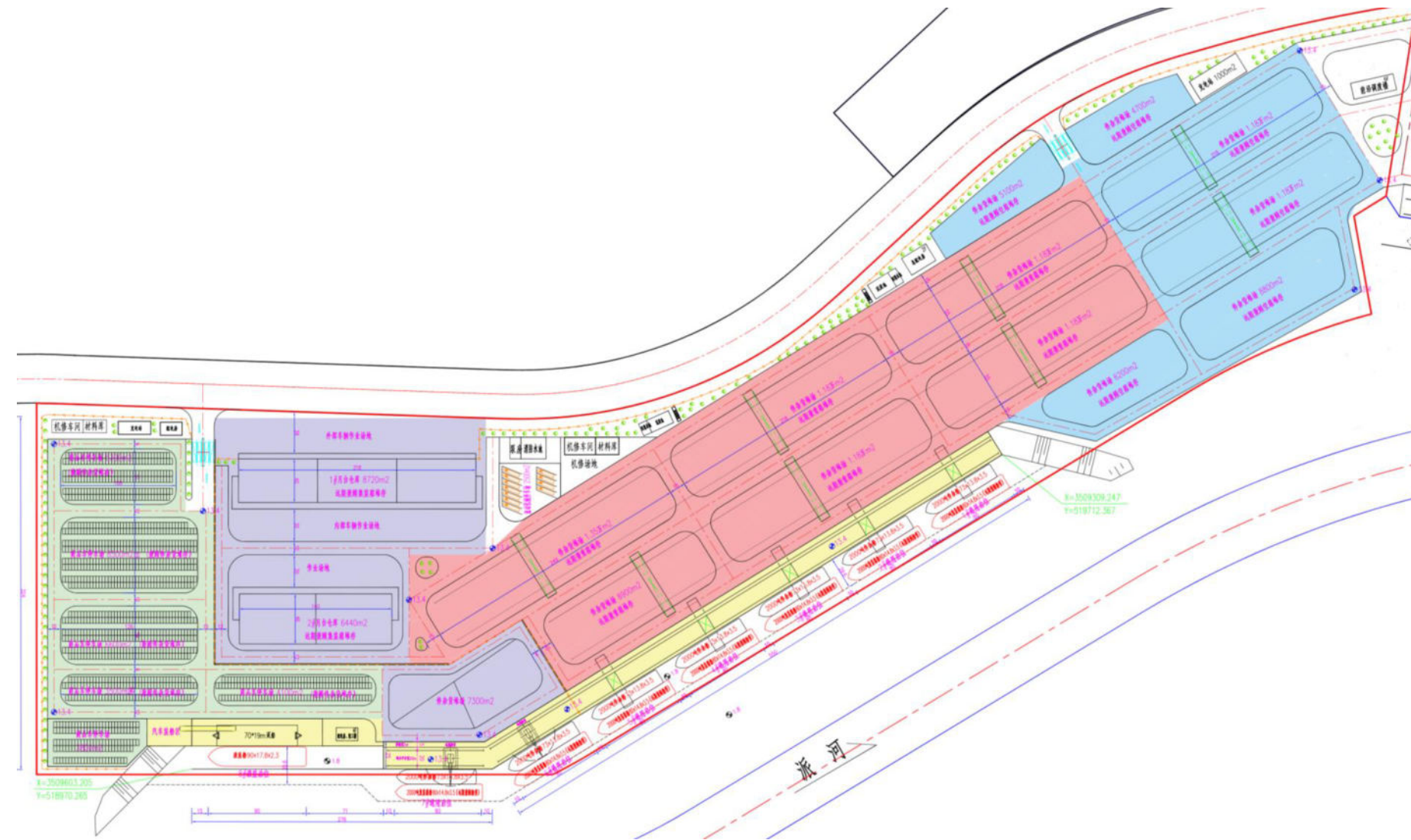
- **Three** berths (10,000 tons ship)
- Annual capacity
  - Break bulk cargo: 2.8 million tons
  - Container cargo: 400,000 TEU
- Shoreline: 480 meters
- Project cost (Est.): **\$191.6** million
- One container stocking yard for Class IX dangerous goods





## Hefei Paihe International Logistics Park Port

- **Eight** berths (2,000 tons ship)
- Annual capacity
  - Break bulk cargo: 1.0 million tons
  - Container cargo: 450,000 TEU
  - Automobile: 100,000
- Shoreline: 826 meters
- Project cost (Est.): **\$218.3** million
- Berth #8 is ro-ro berth, designed for import and export of automobile
- Six parking lots for the ro-ro berth

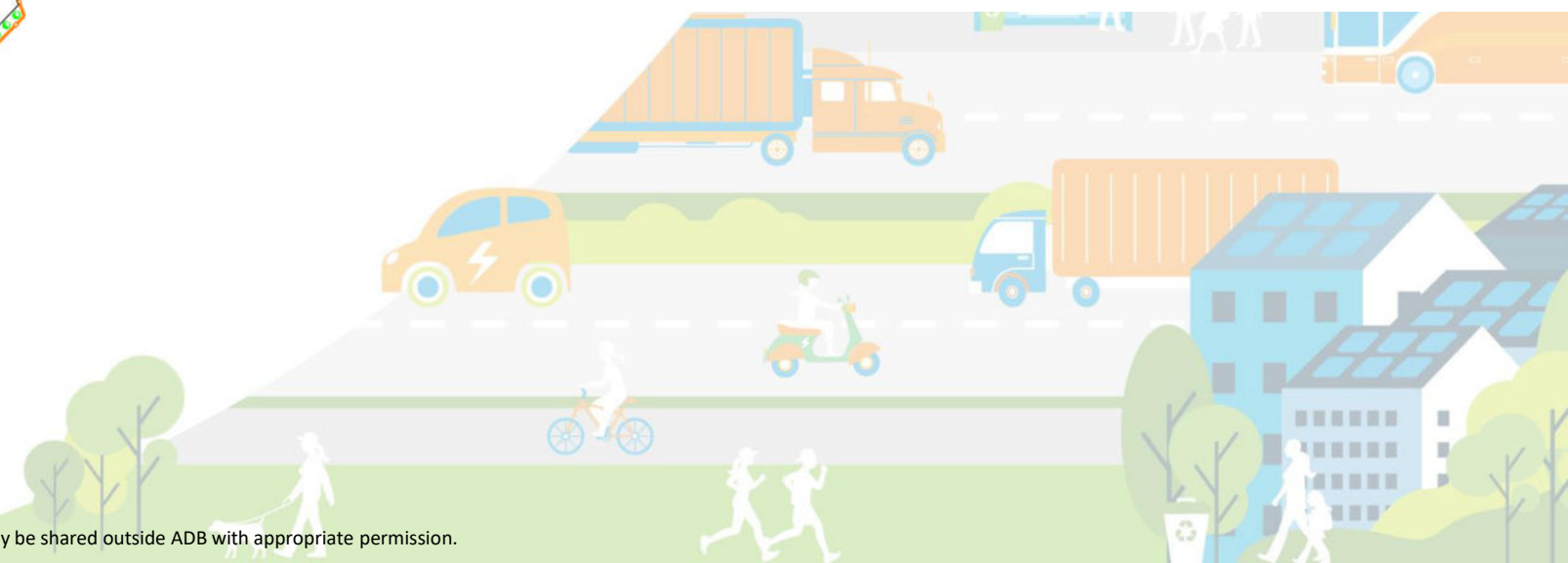
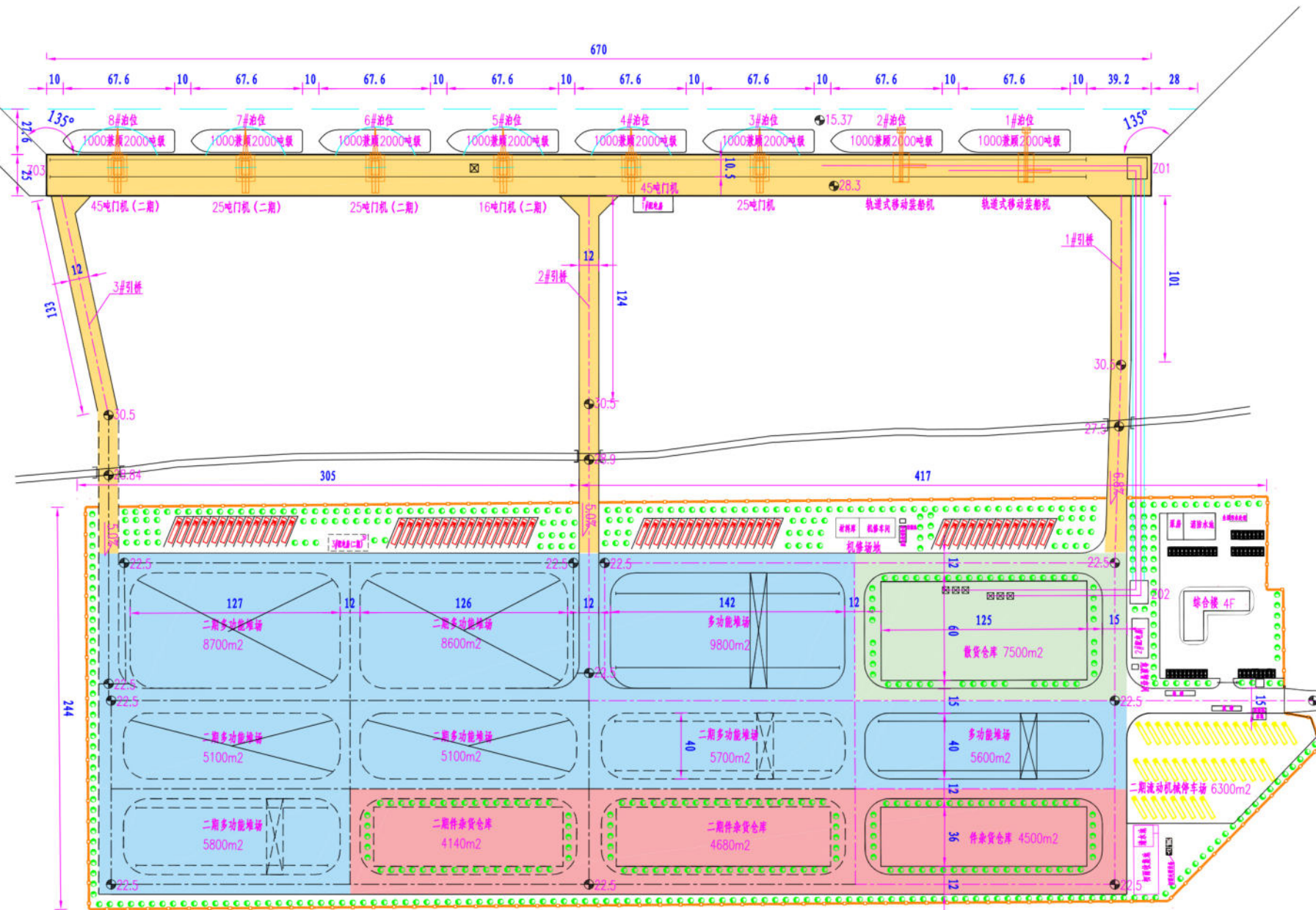




# Project component (cont.)

## Lu'an Huoqiu Port Zhouji Wharf

- **Eight** berths (2,000 tons ship)
- Annual capacity
  - Break bulk cargo: 3.6 million tons
  - Bulk cargo: 4.7 million tons
- Shoreline: 670 meters
- Project cost (Est.): **\$113.6 million**





## Project component (cont.)

### Hefei-Wuhu Clean Energy Container Shipping Route

- **Eight** battery vessel (**120** TEUs)
- 2025-2029
- Gradually replace the fossil fuel vessels used for this route by the company
- The only shipping route connecting Hefei to the Yangtze River
- **145** kms, moderate distance
- Mostly standing still water, constant power output



# Highlights on green and smart development



01



- **Shore power** facilities are provided to charge vessels
- Real-time monitoring and utilization statistics

02



- **Energy-efficient** Loading equipment
- Explore energy recovery





# Highlights on green and smart development (cont.)

- **Photovoltaic** power: rooftop PV panel
- Equipment **electrification**: loading/unloading equipment, port vehicles, charging facilities
- Explore the **wind** power to supply green electricity to the port



# Highlights on green and smart development (cont.)

## ➤ Multi-modal transport system

- Explore the integrated logistics via rail and water transport
- Reduce the reliance on road transport
- Reduce the logistics cost and carbon emission

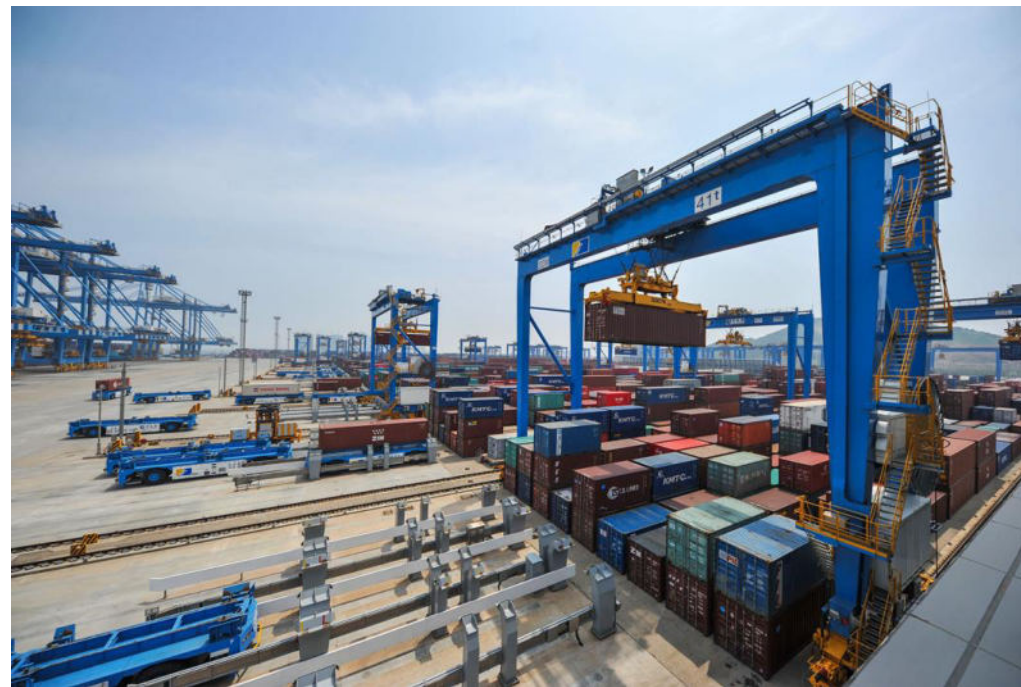




# Highlights on green and smart development



- Enhance the level of **automation** in the port operations



- Remote controlled loading
- Automated RMG crane



THANK YOU!

*[yanglu@adb.org](mailto:yanglu@adb.org)*

