



The East Asian-Australasian Regional Flyway Initiative

Karen Grace C. Ochavo

Environment Officer

Climate Change and Sustainable Development Department

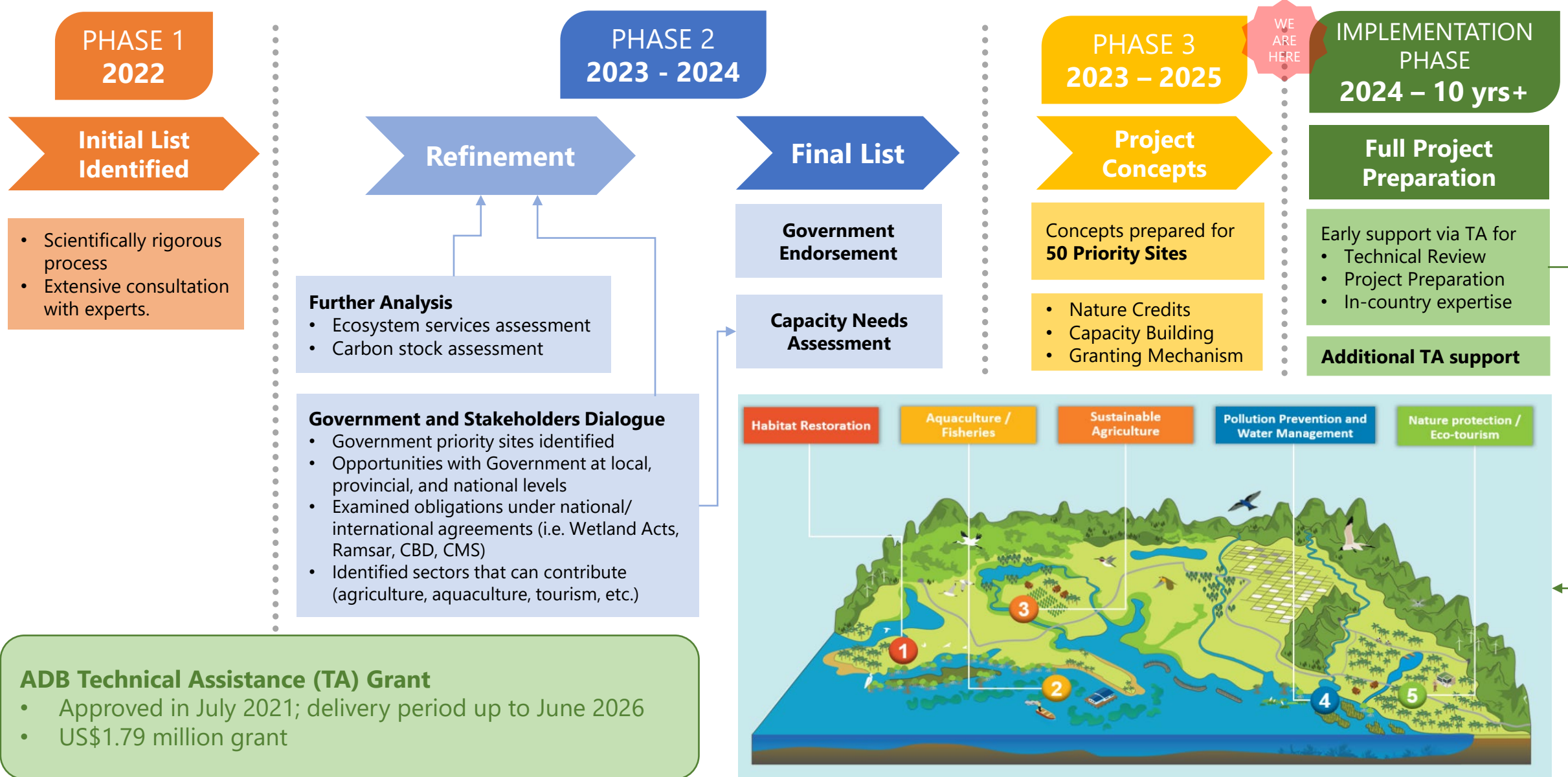
Asian Development Bank

AMBITION – a regional initiative to mobilize \$3 billion of investment for wetland protection and management to have flyway level impact

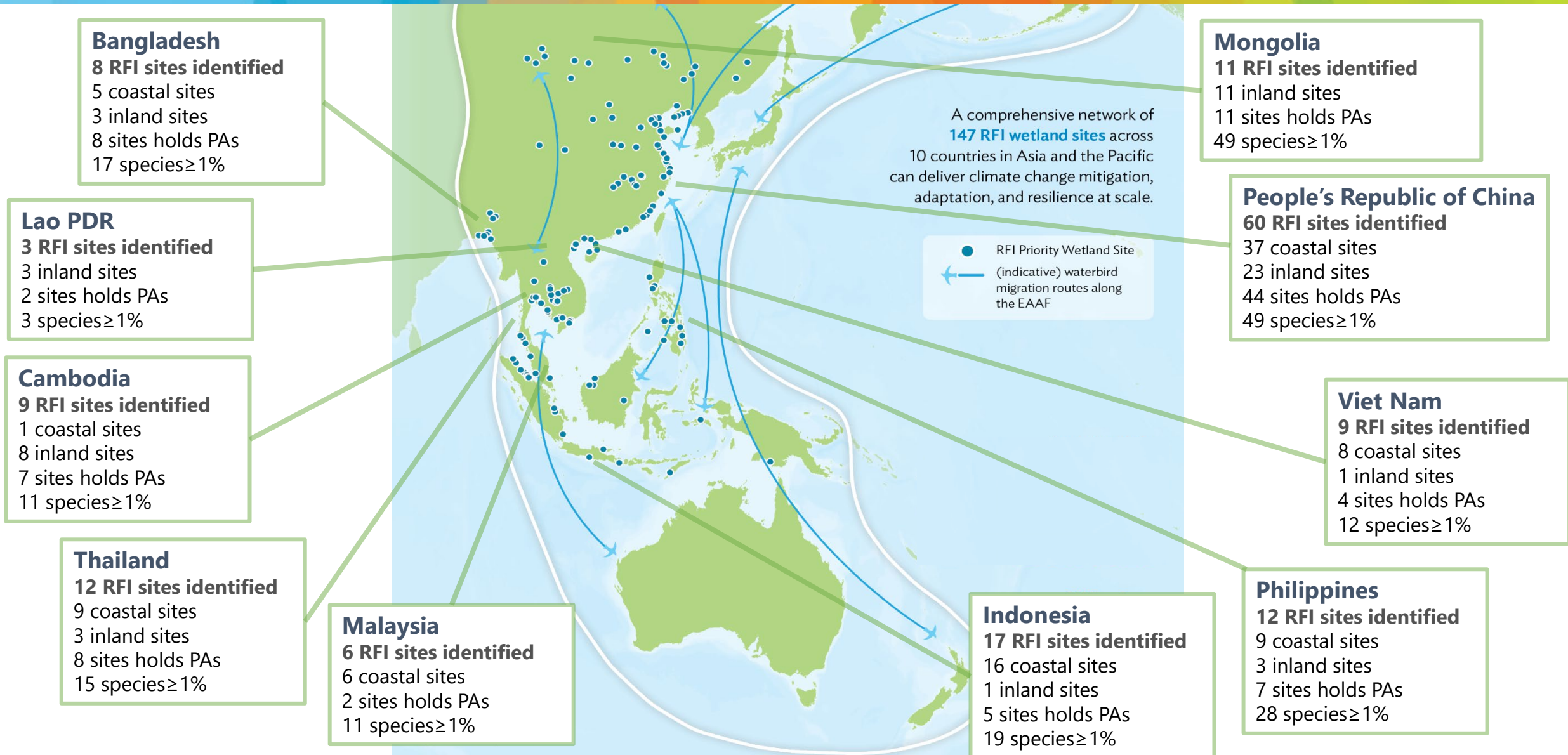
- **Alignment.** East Asian-Australasian Flyway Partnership (EAAFP) Strategic Plan, UNCBD, Paris Agreement, Ramsar, CMS, UNESCO
- **\$100 billion climate commitment.** ADB target cumulative investment by 2030 – Nature will be key to deliver climate adaptation and resilience
- **Regional.** East, Central, Southeast Asia and the Pacific. Initial focus on 8 countries.
- **Goal.** Improved management of **50 wetlands** → build a network of wetland habitats with species numbers maintained or enhanced
- **Co-benefits.** Healthy wetlands: natural capital and ecosystem services; nature-based solutions; livelihoods.



RFI Phased Approach – Development to Implementation

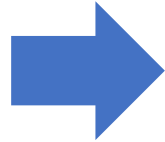


RFI Priority Sites - 147 sites selected across the EAAF within ADB DMCs



Phase 2 – Further Analysis: Ecosystem Services (ES) Assessment

Step 1: ES documentation



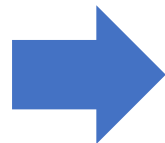
In-country participatory workshops: TESSA toolkit

a) Preliminary Scoping Appraisal:

- Define site boundaries.
- Classify the habitat types within site boundaries.
- Documentation of ES.
- Drivers of change impacting each site.

b) Determining alternative states: To understand changes on provision of ecosystem services under plausible future changes.

Step 2: ES assessments



Likelihood-related ecosystem services (1-2 sites per country):

- Cultivated goods
- Harvested wild goods
- Nature-based recreation and tourism

Field techniques: workshop and household questionnaires.

Country specific approaches?

**GROSS
ECOSYSTEM
PRODUCT**

Coastal protection

Desk-based: Modelling toolkit (InVEST) used with published global datasets.

Global climate regulation (carbon storage)

Desk based: Remote sensing techniques.

Stakeholder engagement during workshops in the Philippines, Cambodia, Thailand, and Bangladesh



Philippines – Balanga, Bataan (2023)



Cambodia – Boeung Prek Lapouv, Takeo (2023)



Thailand – Pak Thale, Phetchaburi (2023)



Bangladesh – Baikka Beel, Hail Haor, Sylhet (2024)



Ecosystem Services Assessment - Contribution to Project Concept Development

Identification of key natural assets

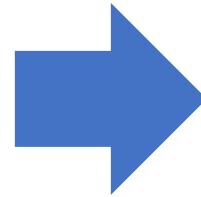
- ES work identifies key natural assets
- Establishes monetary value

Identification of threats / opportunities

- Identifies negative drivers
- Identified existing degradation and threats
- Identifies opportunities

Stakeholder Feedback

- Includes feedback from stakeholders



Early Project Concept

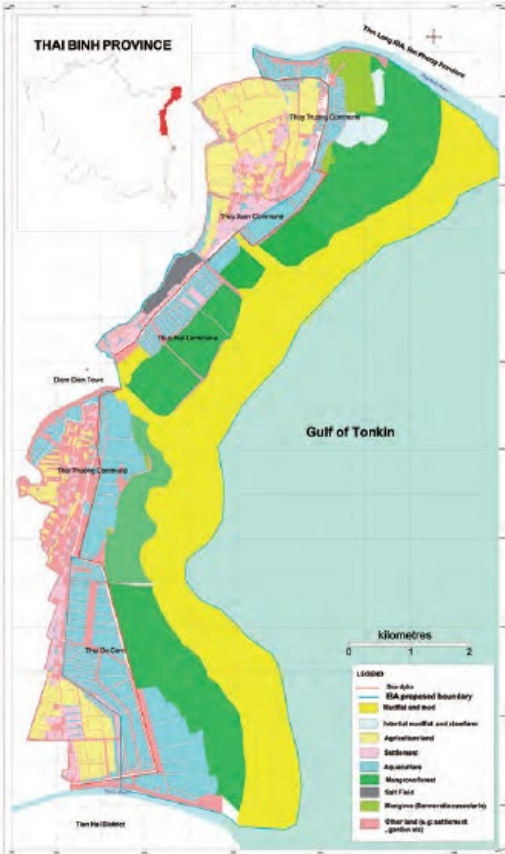
- Rapid Appraisal
- Potential Modeled Outcomes
- Enabling Environment
- Identify Co-benefits
- Non-committal Recommendations



**Mongolia Workshop
Ulaanbaatar (2024)**

Ecosystem Services Assessment Results – TESSA output example: Thai Thuy, Viet Nam

Habitat and Land-use of Thai Thuy Wetland Area
Thai Binh province, Vietnam



Land use	Area (ha)
Intertidal mudflat	3,766
Mangrove forest	1,754
Aquaculture	1,411
Salt farm	50
Total	6,981

Map and land use of Thai Thuy Wetland

Benefit



Harvested Wild Goods \$2.2 million/year

Fish harvested in Thai Thuy district \$1.37 million/year¹
Shellfish collected in the mudflat \$0.87 million/year



Cultivated Goods \$ 11.7 million/year

Fish and Shrimp harvested from semi natural aquaculture \$0.58 million/year (\$2,524/ha/year)²
Fish harvested from intensive aquaculture \$8.93 million/year (\$7,558/ha/year)²
Clam harvested from clam culture in mudflat \$ 1.93 m/year
Salt production in the salt farm \$0.22 million/year³



Disaster Risk Reduction \$ 1.1 million/year

Protective benefits of mangrove forest \$1.05 million/year⁴



Climate Regulation \$60.3 million

The benefit of global climate regulation from the carbon stored in the wetland is \$ 60.26 million. This is an one-off stored value, i.e. not an annual value.⁵

**Net Benefit : \$ 15.0 million / year
Plus \$ 60.3 million of carbon storage function**

RFI Implementation Phase – Investment Ideas

Projects (e.g., Nature-based Solutions)

RFI INVESTMENT CONCEPT 1 HABITAT RESTORATION AND PROTECTION



Restoring and protecting mangroves and other wetland habitats has clear economic and ecological benefits.

RFI INVESTMENT CONCEPT 2 SUSTAINABLE AQUACULTURE



Sustainable aquaculture and fisheries support food, nutrition and water security for wetland communities.

RFI INVESTMENT CONCEPT 3 SUSTAINABLE AGRICULTURE



Sustainable agriculture can strengthen long-term food and livelihood security while delivering net gains for biodiversity.

RFI INVESTMENT CONCEPT 4 POLLUTION PREVENTION AND WATER MANAGEMENT



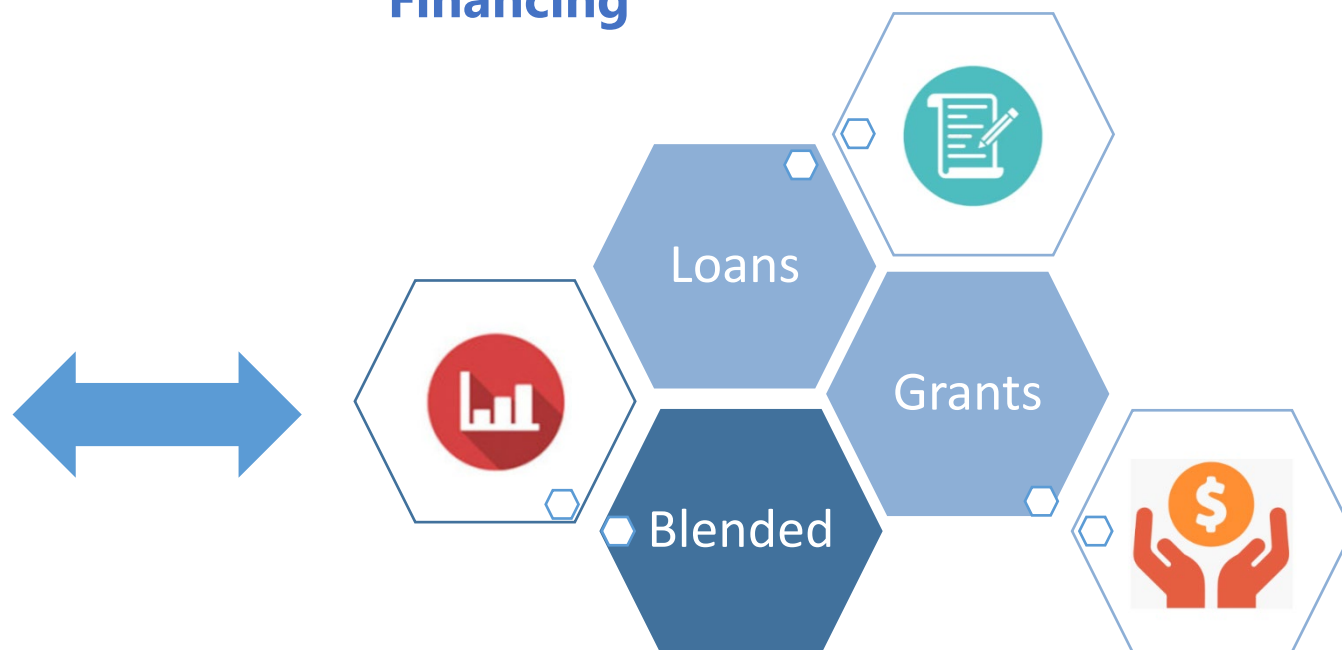
Preventing pollution and sound water governance offers massive benefits

RFI INVESTMENT CONCEPT 5 NATURE PROTECTION AND ECO-TOURISM



Protecting natural wetlands creates massive ecotourism benefits and opportunities

Financing



**Innovative Financing Ideas -
Key to unlocking investment**

Investing in **wetlands** - delivers not only for **nature** and **livelihoods** but delivers great opportunities for **climate resilience**

Jiangsu Yancheng Wetlands Protection Project

An Integrated Approach to Preserving the Wetlands in the People's Republic of China

TOTAL
PROJECT
COST:



- ADB: \$27.2 million
- GEF: \$1.4 million
- Government counterpart funding: \$30.5 million



- **Loan** - Sovereign Loan with some nominal blended grant financing and government co-finance (completed 2013)
- **Payment for Ecosystem Services** - model used to reduce pollution and support livelihoods.
- **Community Benefit** - 2,900 people benefited from project through direct employment, 40 hotels opened 1 million visitors per year
- **Nature Conservation** - 4,554 ha wetland restored and rehabilitated. 365% increase in bird population in Rare Bird Nature Reserve
- **UNESCO WHS Listing** - Project contributed to 2019 listing of Yancheng as Natural World Heritage Site.
- **Spring Festival Update** - 2023 launch of World Coastal Forum in Yancheng, 11,700 ha restored in 2023 alone!

2024 Project Approved: Hunan South Dongting Lake Wetland Restoration and Sustainable Development Project

- **Executing Agency: Yuanjiang Municipal Government** (Hunan Province, PRC)
- Project site: **South Dongting Lake (SDL), a Ramsar site**
- Total investment size **\$309 million**
 - ADB loan: \$150 million
 - AFD loan: \$65 million
 - Government finance: \$94 million
- **Dongting Lake** is in the top 23 of PRC RFI priority sites
- First dedicated RFI investment and demonstration project
- **Develop high-impact NbS projects:** almost **12,000+ ha of degraded wetland restored** (saucer-shaped lakes); creation of islands with open water and exposed mudflats providing roost sites and feeding resource wildfowl; land reshaping and hydrological to increase water levels during dry season (adaptation measure)
- **Strengthen government capacity to incorporate NbS in project design linking climate and nature:** pilot a mechanism to improve management of 168,000 ha SDL; and scale-up to provincial level for 430,000 ha DL area
- **Develop innovative financing instruments to enable NbS projects to scale up the flow of finance:** establish eco-compensation mechanism to fund eco-farming, reed utilization, ecological aquaculture; and use of eco-tourism revenues to replenish the eco-compensation mechanism



RFI Partnerships and Capacity Building

Significant Partnerships

Delivering financial and technical contributions to the RFI including Ministry of Environment Japan, Wetlands International, Paulson Institute, National University Singapore, James Cook University, Cultivo, Conservation Capital, IUCN, AFD, DOI-ITAP, USAID, Ibis Rice, WWF, WWT Sustainable Rice Platform, FAO and UNDP.



Flyway Event, CBD COP16, Colombia (2024) including MOEJ

Capacity Building

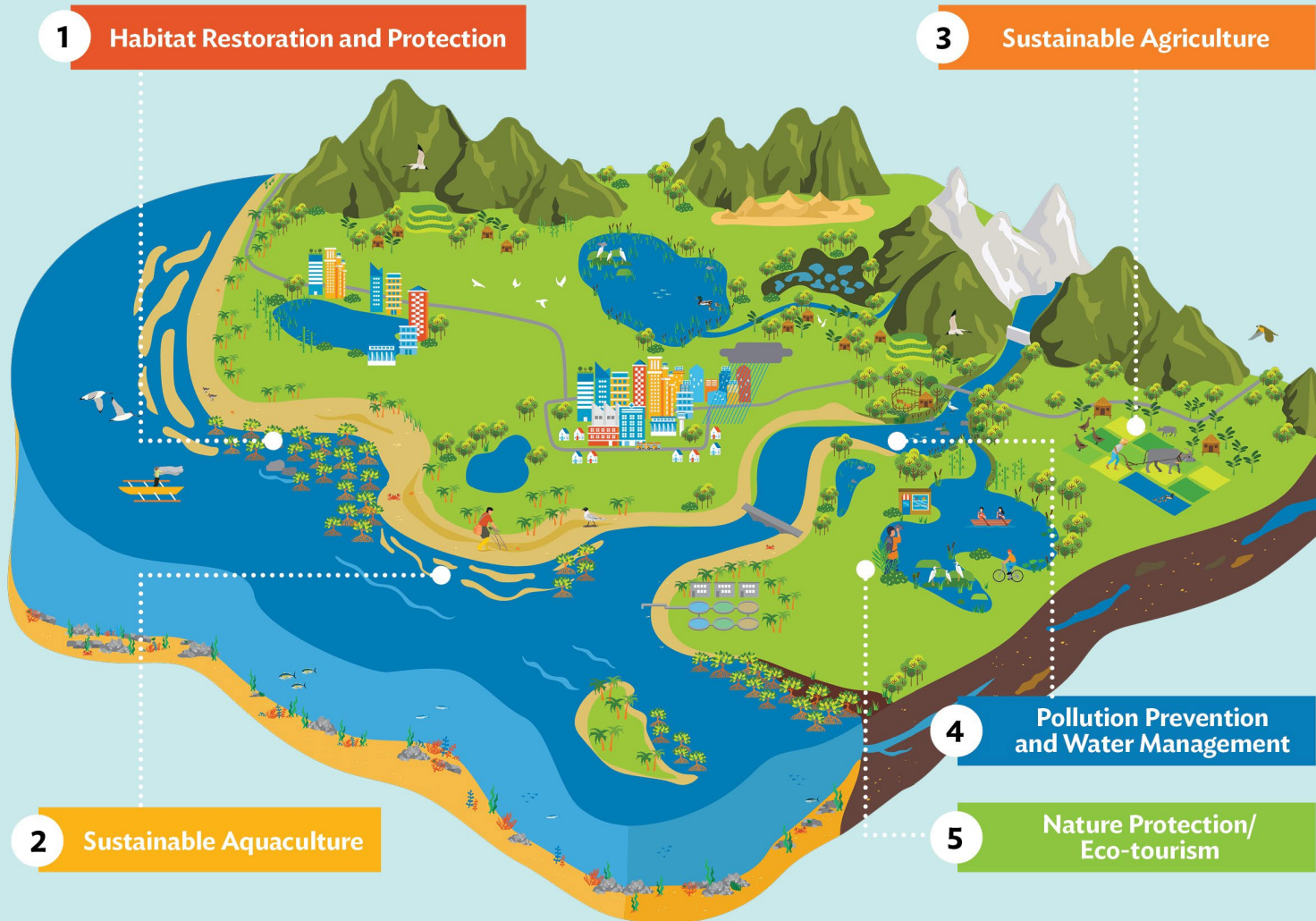
Capacity needs assessment was included in the five workshops on ecosystem services valuation to support DMCs. This complements work by others such as the ASEAN Flyway Network as supported by the Japan-ASEAN Integration Fund (JAIF).

Support for in-country workshops through BirdLife International's local CSO partners: NatureLife Cambodia, Bird Conservation Society of Thailand, SCOPE Foundation, Wildlife Science and Conservation Center of Mongolia.

Next Steps for the RFI

RFI Projects: Investment Concepts

As an initial guide, ADB presents five broad conceptual investment models for wetland sites:



- **Ecosystem approach of NbS** to provide long-term sustainable livelihoods
- Socio-economic benefits to **support health and wellbeing of wetland stakeholders**
- Habitat protection to **minimize human-wildlife conflict**
- **Regional scale** of benefits connected by seasonal movement of migratory waterbirds
- **Knowledge sharing** across flyway countries, including tagging, tracking, and monitoring
- Supporting DMCs to address their **capacity needs in wetland management**
 - establishing positive incentives for wetland conservation
 - wetland research and monitoring
 - assessment of wetland ecosystem services and values
 - climate change and disaster risk reduction
 - invasive species



More information through the QR or link
[ADB Data Room: Regional Flyway Initiative](#)

Thank you!

