

Inclusive, Sustainable, Prosperous and Resilient Health Systems in Asia and the Pacific

INSPIRE Health Forum

7-11 July 2025 • A Hybrid Event



PARALLEL SESSION

#INSPIREhealth2025

Achieving Impact through Private Equity & Venture Capital Fund Investment in Healthcare

Explore the role of private equity and venture capital fund investments in transforming the health landscape in developing member countries.

8 July 2025 • 9:00-10:15 AM • Auditorium 1



INSPIRE Panel: Private Equity & VC Investment in Healthcare

Mitra Plumbon Healthcare (MPH) Growtheum Capital Partners (GCP)

Panelists:

Dr. Festus Susilo – CEO, Mitra Plumbon Healthcare

Choo Koon Po – Partner, Growtheum Capital Partners



MITRA PLUMBON
HEALTHCARE GROUP



GROWTHEUM
CAPITAL

Introduction to Growthem Capital Partners

Partnership Based Strategy to Deliver Business Objectives

Investment Strategy	<ul style="list-style-type: none">▪ Consumption-linked sectors targeting the middle-lower segments▪ Southeast Asia  d India ▪ GCP undertakes partnerships in companies that we have a prior robust track record
Active Engagement to Support Management	<ul style="list-style-type: none">▪ Value-added investor across relevant aspects of business operations▪ Concentrated portfolio allows to GCP to be a dedicated partner
Fund Highlights	<ul style="list-style-type: none">▪ Fund Size of USD 567 million▪ Largest-ever Debut Fund raised for Southeast Asia and India

Select Present and Past Portfolio Companies

Financial Inclusion

allobank



Vietcombank
Together for the future

VNLIFE

Quality Healthcare



SUNWAY
HEALTHCARE

METRO
PACIFIC
HOSPITALS

VINMEC

Affordable Protein



Enhancing Food Security

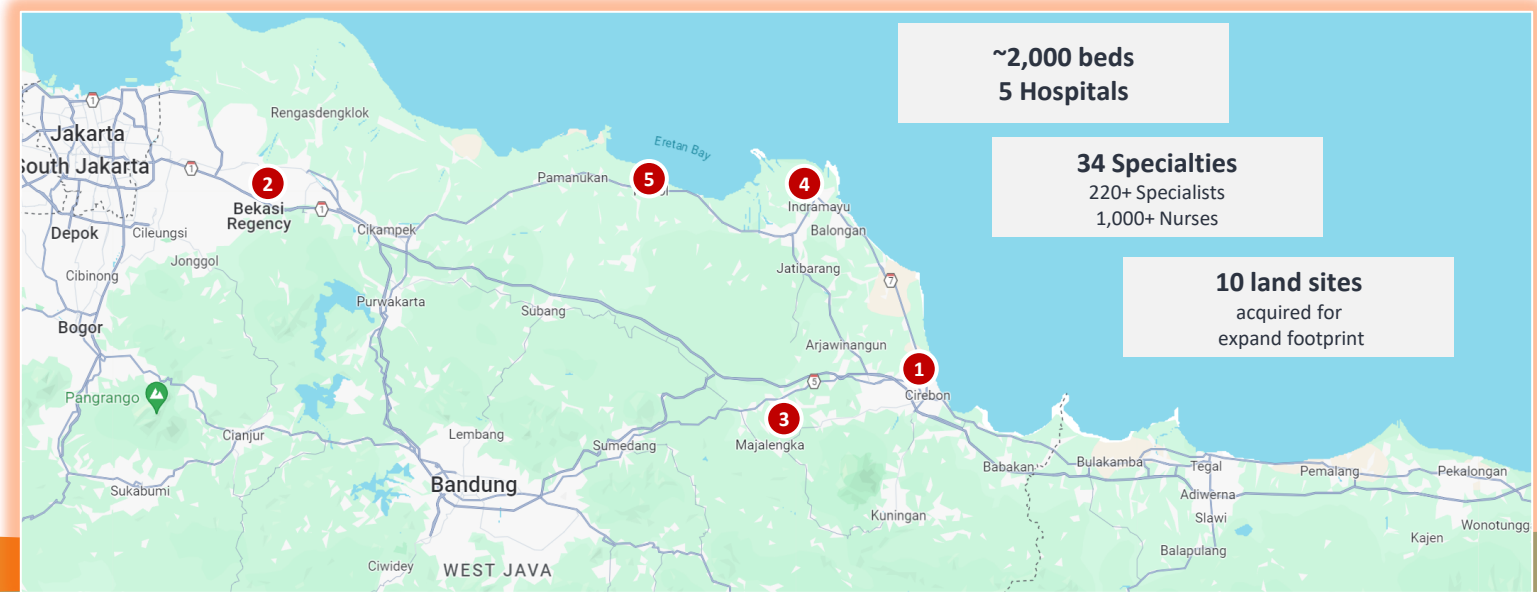


Introduction to Mitra Plumbon Healthcare

1	Cirebon (740)
2003	
2	Cibitung (233)
2010	
3	Majalengka (282)
2016	
4	Indramayu (550)
2019	
5	Patrol (150)
2024	
2025-2027	>2k Additional Beds (+10 Hospitals) to be added

Company Overview

- Founded in 2003 and headquartered in Cirebon, Indonesia, MPH is a **doctor family-owned multi-specialty hospital group, focusing on the social insurance segment in tier 2/3 cities**
- MPHG offers a comprehensive range of specialties covering secondary and tertiary care, incl. ObGyn, paediatrics, ophthalmology, ENT, neuro, ortho, cardio and others
- Flagship hospital in Cirebon is the **largest private hospital in Indonesia**; Every MPH hospital is constructed with goal to be at 400-500 beds, aiming to be **largest in each regency**



Building an Enduring Family Legacy Together



Construction of RS Cirebon ~2003



MPH Cirebon Grand Opening (Flagship)



RS Patrol (5th Hospital) Grand Opening 2023



GCP Annual General Meeting 2024

Founding Generation



Dr. Andre Susilo
(Neurosurgeon, MPH Founder)



Ir. Saraswati Gondotesna
(MPH Chairwoman)

Next Generation Leaders



Dr. Festus Susilo
(Neurosurgeon & CEO)



Dr. Rhema Susilo,
(Anesthesiologist)



Dr. Sulaeman Susilo
(ObGyn Oncologist)



Dr. Jessica Angela
(Dermatologist & Chief Marketing Officer)



Dr. Claudia Alberta
(Cardiologist)

Supported by Growthium Team



Amit Kunal
(Managing Partner)



Choo Koon Po
(Partner)



Kurnadi Pradinata
(Senior Managing Director)



Adrian Yeo
(ESG Head & General Counsel)



Melvin Lim
(Vice President)



Fan Ray Aun
(VP, Data Analytics)



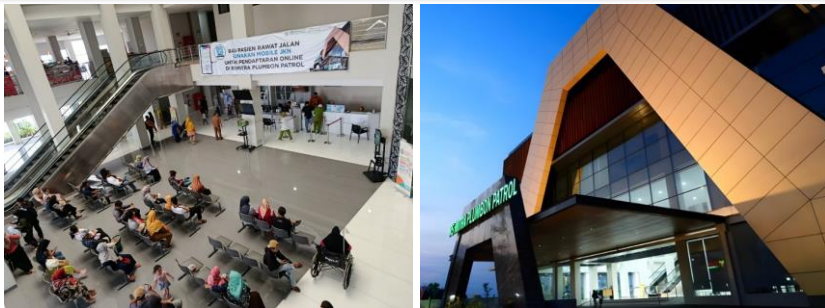
Nicholas Astono
(Associate)

MPH served 1.4mn patients in 2024

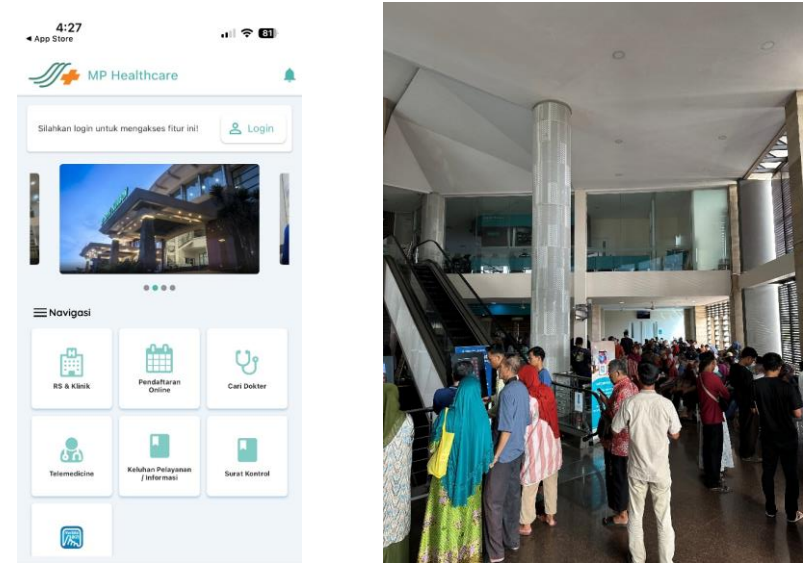
Successful JCI Accreditation in April'25
(Achieved in 1st application)



Newest Hospital Patrol started Receiving BPJS Patients



Leveraging Proprietary Patient Management Systems to Improve Satisfaction



Offering State-of-the-Art Healthcare Technology



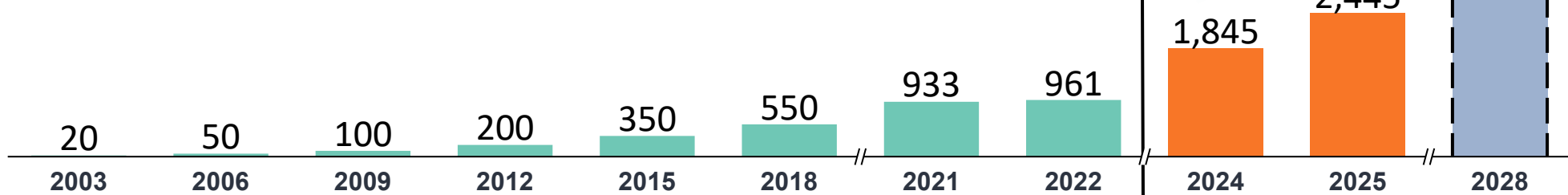
Growtheum's Strategic Partnership with MPH since July 2023

MPH doubled bed count from 2022-24 and is working on expansion at the 4 existing hospitals and 4 new sites to deepen the access of quality healthcare in the region

Number of Hospitals



Number of Beds



GCP & Management Partnership Areas





Thank You