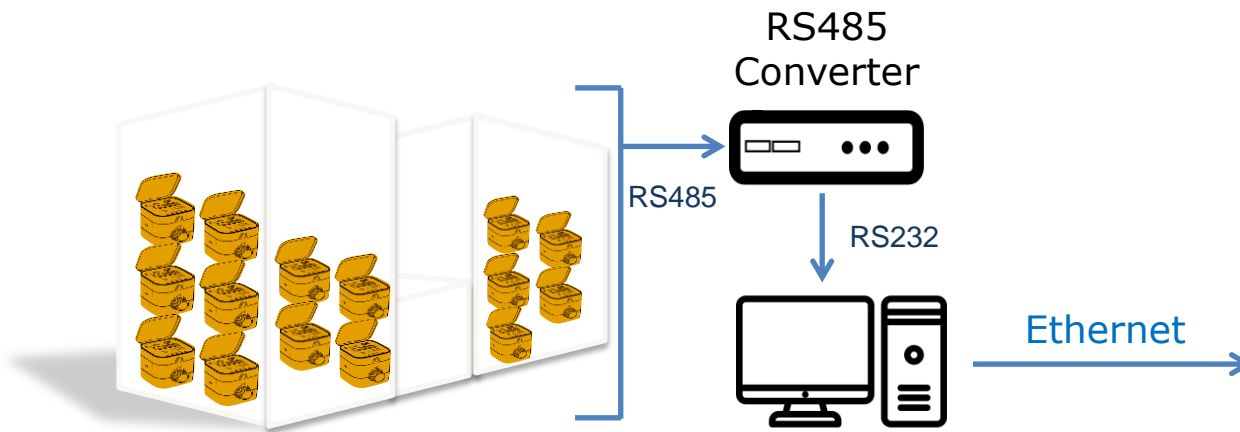
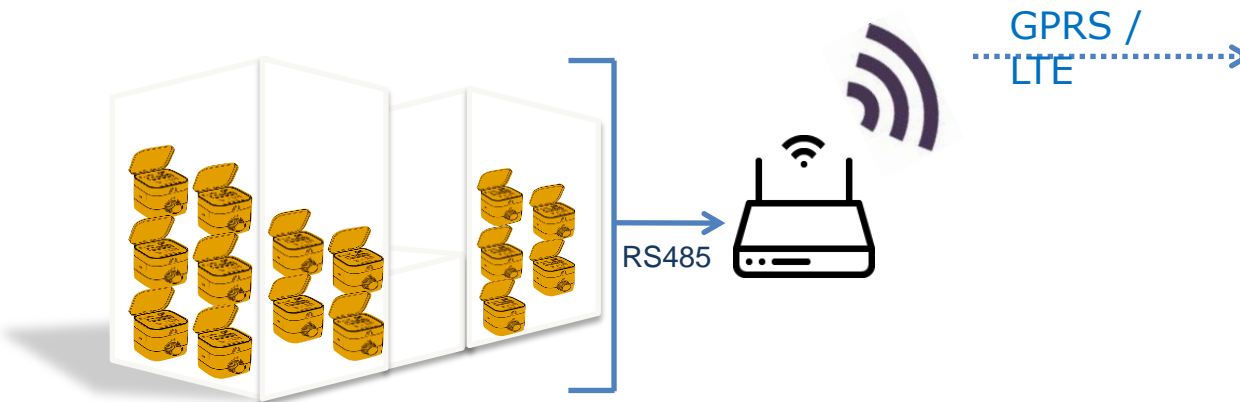


AMI for Apartment

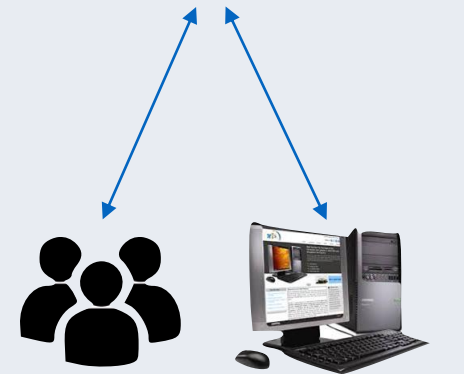
Case #1 Wired Solution



Case #2 Wireless Solution



Data Server



USER

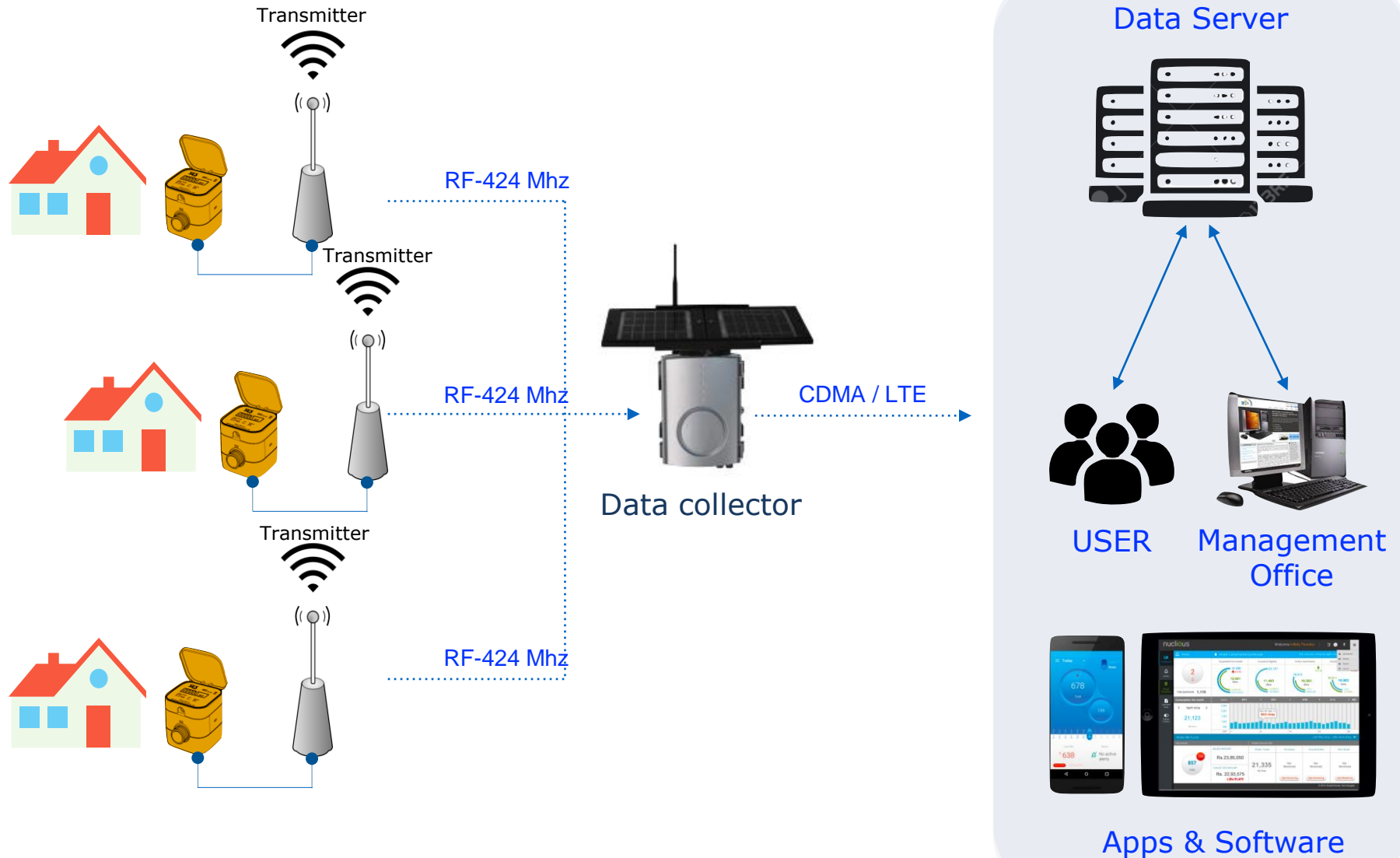
Management Office



Apps & Software

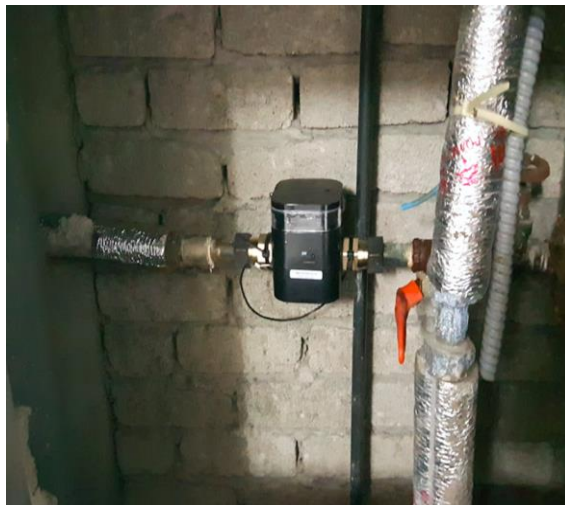
AMI for Independent House

Case #3 Wired + Wireless combo



Independent House in Korea

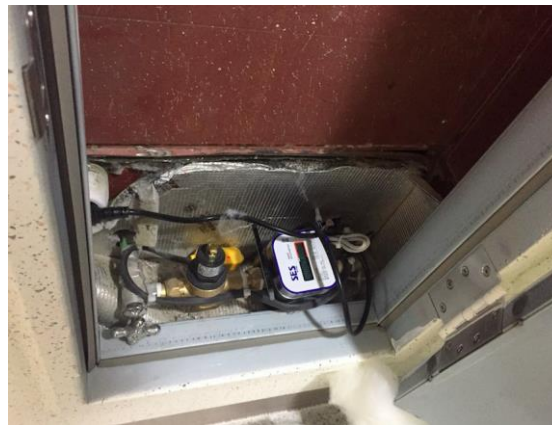
- House Type : Independent House
- Meter Type : Fluidic Oscillation
- Communication Type : Wired RF-424Mhz
- Location : ChangNyeong, South Korea



Apartment in Korea



- Constructor : Hyosung Group
- House Type : Luxury Apartment
- Households : 478
- Meter Type : Fluidic Oscillation
- Communication Type : Direct Power Line Communication
- Location : GongJu, South Korea
- Land Space : 190,628 sqft
- Building Space : 35,651 sqft



AMR Bluetooth

Case #4 Independent house



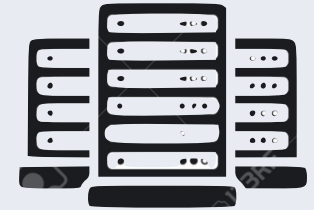
Case #5 Food court in mall



Case #6 Town Home



Data Server



USER



Management Office



Apps & Software

AMR Bluetooth (Walk-By , Drive-By)

Case #4 RF



Wireless Module
built in Meter



External Display

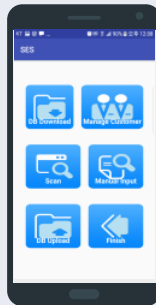


Read Meter man

Case #5 Bluetooth



Bluetooth
built in Meter

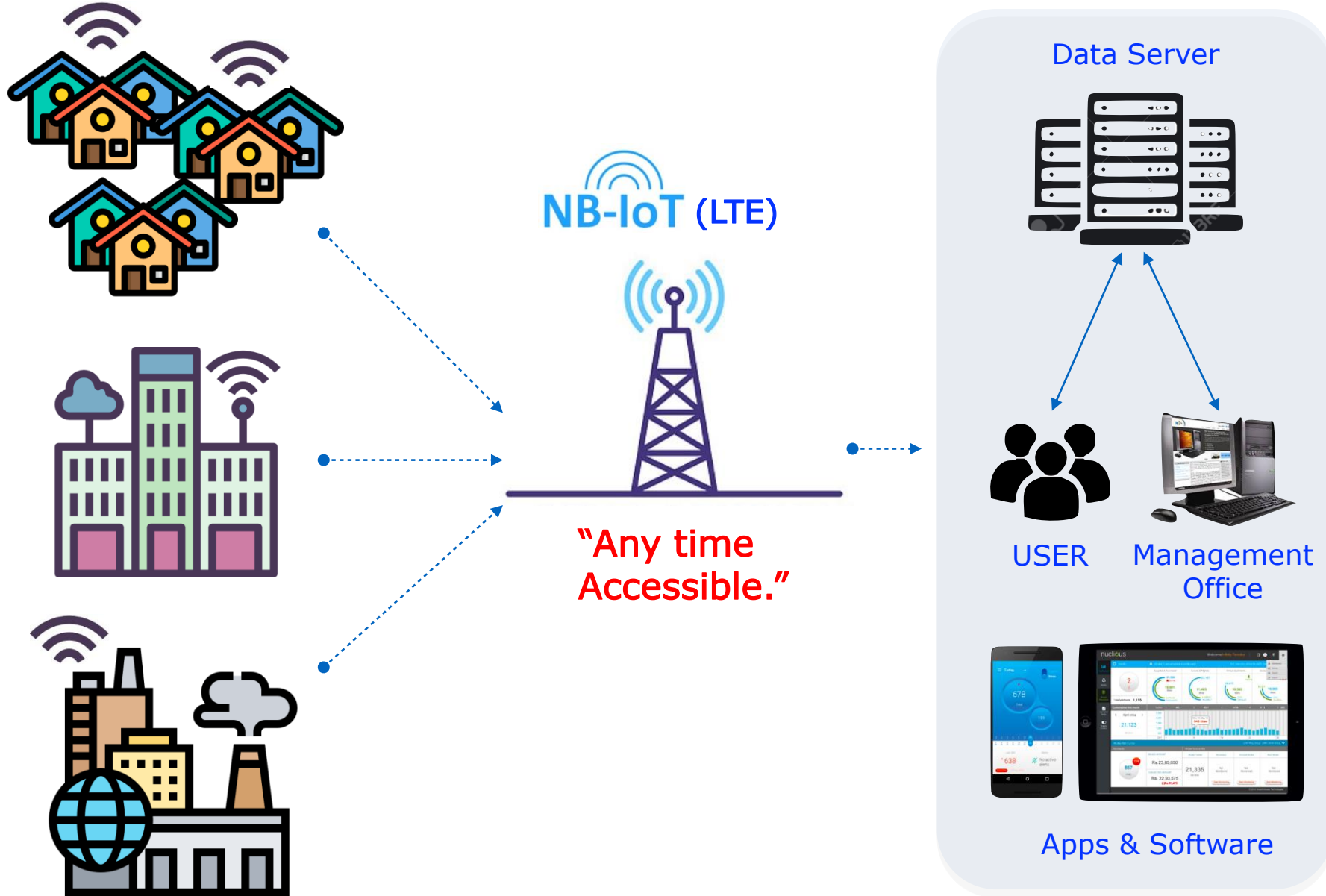


Mobile App
with Bluetooth



Management Office

AMI Wireless Solution (NB-IoT)



AMR Specifications

	Wireless			Bluetooth Solution	NB-IoT
	Zigbee	Sub -1GHz	LoRa	Bluetooth	NB-IoT
Install Type	Built In	Built In	Transmitter	Built In	Transmitter
Frequency	2.4 Ghz	424Mhz ~ 447 Mhz	900 Mhz	2.4 Ghz	900Mhz
Indoor / Outdoor range	Up to 50 m	Up to 2 km	Up to 10 km	Up to 50m	Depends on NBIOT Sim Coverage.
Power consumption	33 / 28 mA	46 / 26 mA	-	-	400mA(max)
Operating Temperature	-20°C ~ 70°C				0 ~ +50 °C
Remark			1Q 2018	Mobile Apps	

- Daily Communication (1-time / day)
- 8 Years Battery Lifetime
- Water Proof (IP68 - Water Meter , IP65 - Outdoor Display)
- Built in RF-Module Water Meter except LoRa
- Bluetooth 5.0 will be built in Meter in 1Q 2018



RF Module
built in Meter



RF Module
built in Display