



Online **ADB Sanitation Dialogue 2021**

ACCELERATING INCLUSIVE SANITATION

12–22 April 2021

Sex, Sanctity, and Sanitation for All

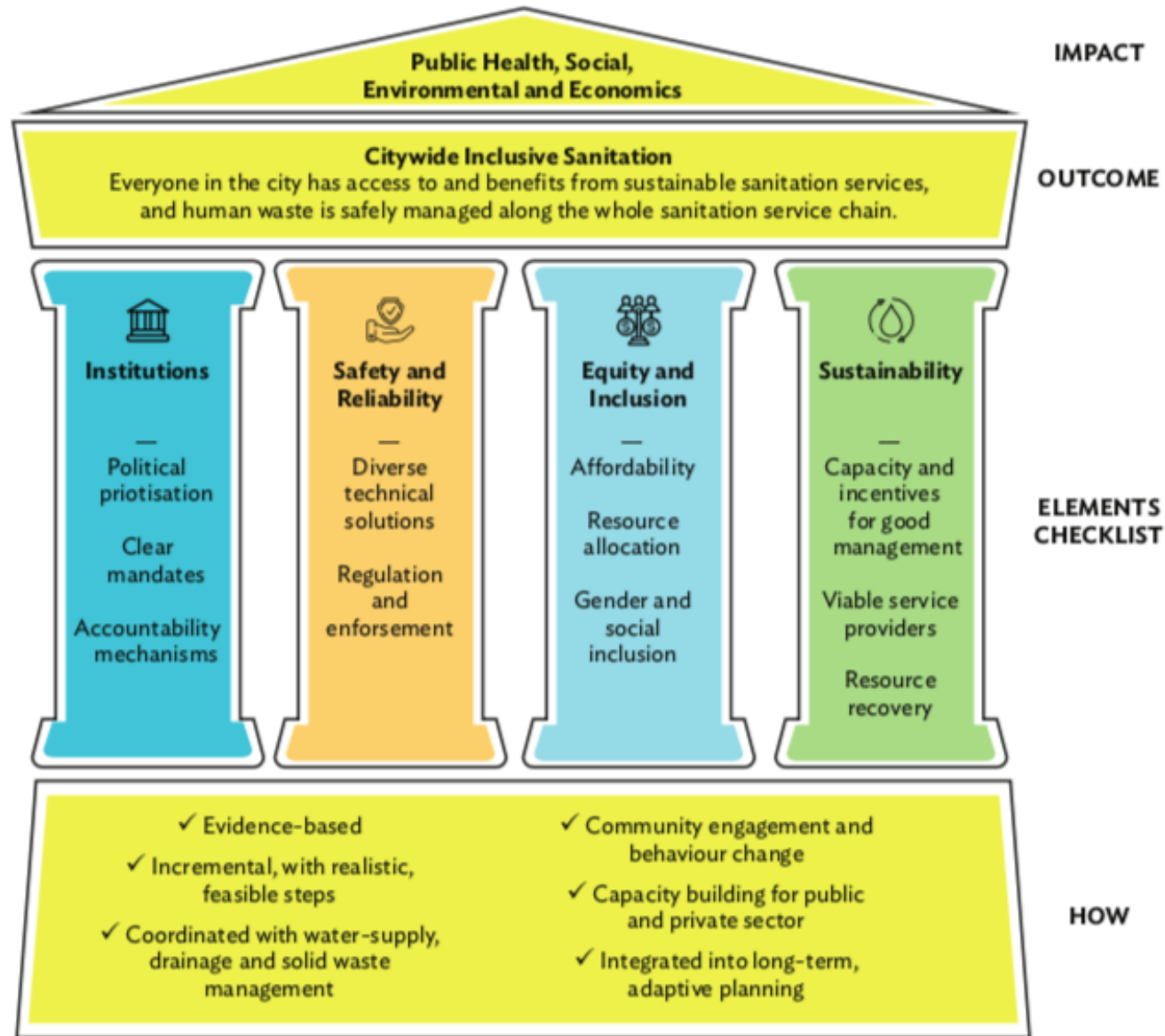
Equity and Inclusion in All that we Do

Therese Dooley

UNICEF - ROSA

This is not an ADB material. The views expressed in this document are the views of the author/s and/or their organizations and do not necessarily reflect the views or policies of the Asian Development Bank or its Board of Governors, or the governments they represent. ADB does not guarantee the accuracy and/or completeness of the material's content, and accepts no responsibility for any direct or indirect consequence of their use or reliance, whether wholly or partially. Please feel free to contact the authors directly should you have queries.

What is Citywide Inclusive Sanitation



Thinking about Inclusion in all that we do.....

Putting ourselves into other people's shoes...



Q - How would I feel as an 12 year old girl to have to queue with 20+, 40+, 60+ year old men who are not family members to use a toilet?



Q - How would I feel as a person who cannot walk or squat to have to urinate on the floor of my shelter or balance on a water bucket to defecate?

How would I feel?



Q - How would I feel as an older man or woman who is unstable on my feet to have to walk up and down a hill to collect water to be able to do basic tasks?

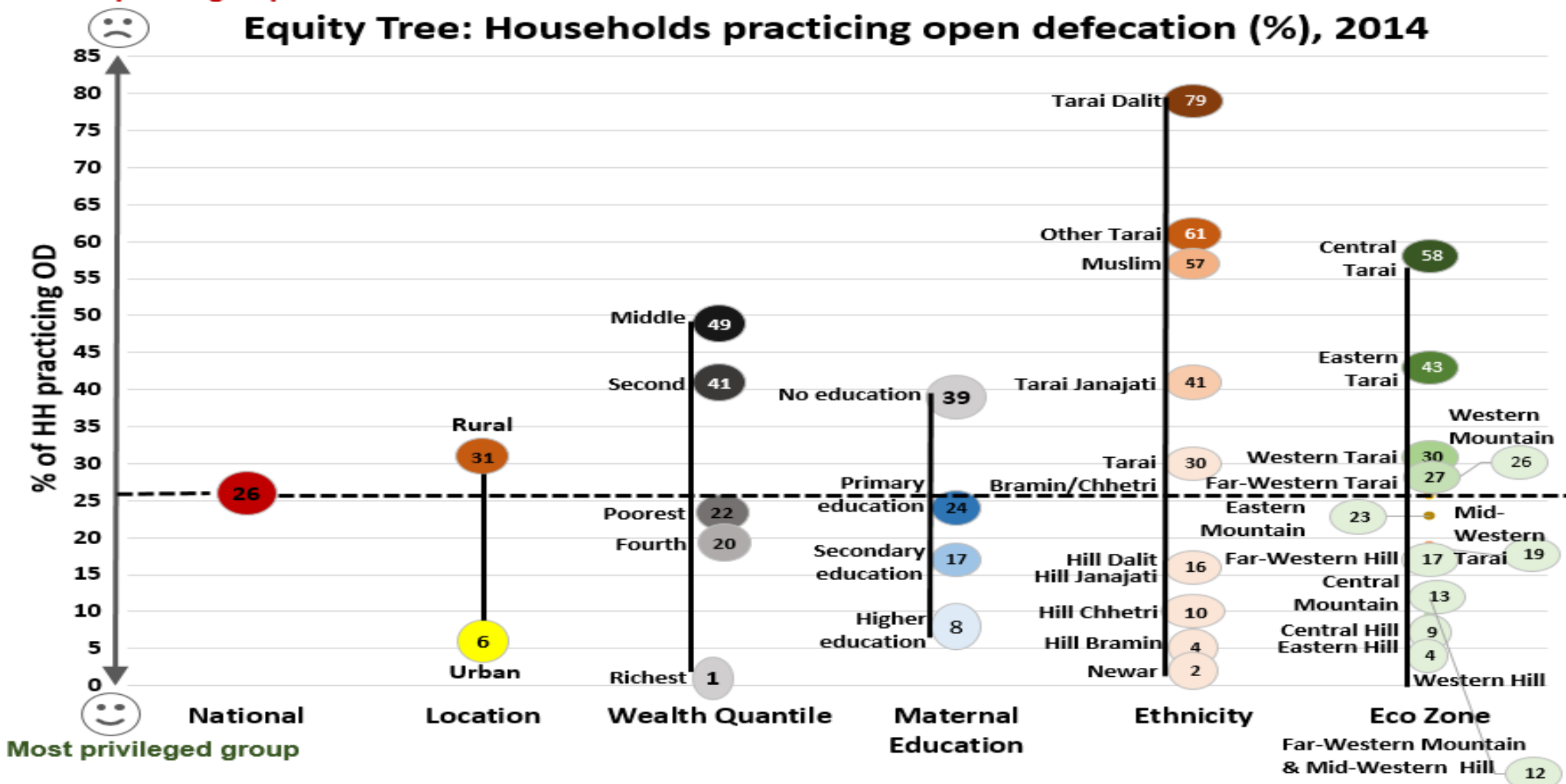


R. Shaw / WEDC

Equity Tree (New data available soon)

Most deprived group

Equity Tree: Households practicing open defecation (%), 2014



Source: CBS/UNICEF, Nepal Multiple Indicator Cluster Survey -Round 5, 2014

Meeting the needs of Women and Children



- **Inclusive, Integral and Integrated**
- **The Ripple effect study**
- **WASH Beyond the home in schools and Health facilities**
- **WASH and Gender Based Violence (GBV)**
 - **GBV audit in WASH in Cox's Bazar**
- **Menstrual Hygiene matters**

Meeting the needs of people with Disabilities

**Compared with children without disabilities,
children with disabilities are:**



**18% less likely
to have
improved sanitation
facilities in their
households**

**18% less likely to
have improved
drinking water
sources in their
households**

**10% less likely
to have
water and soap
for handwashing in
their households**



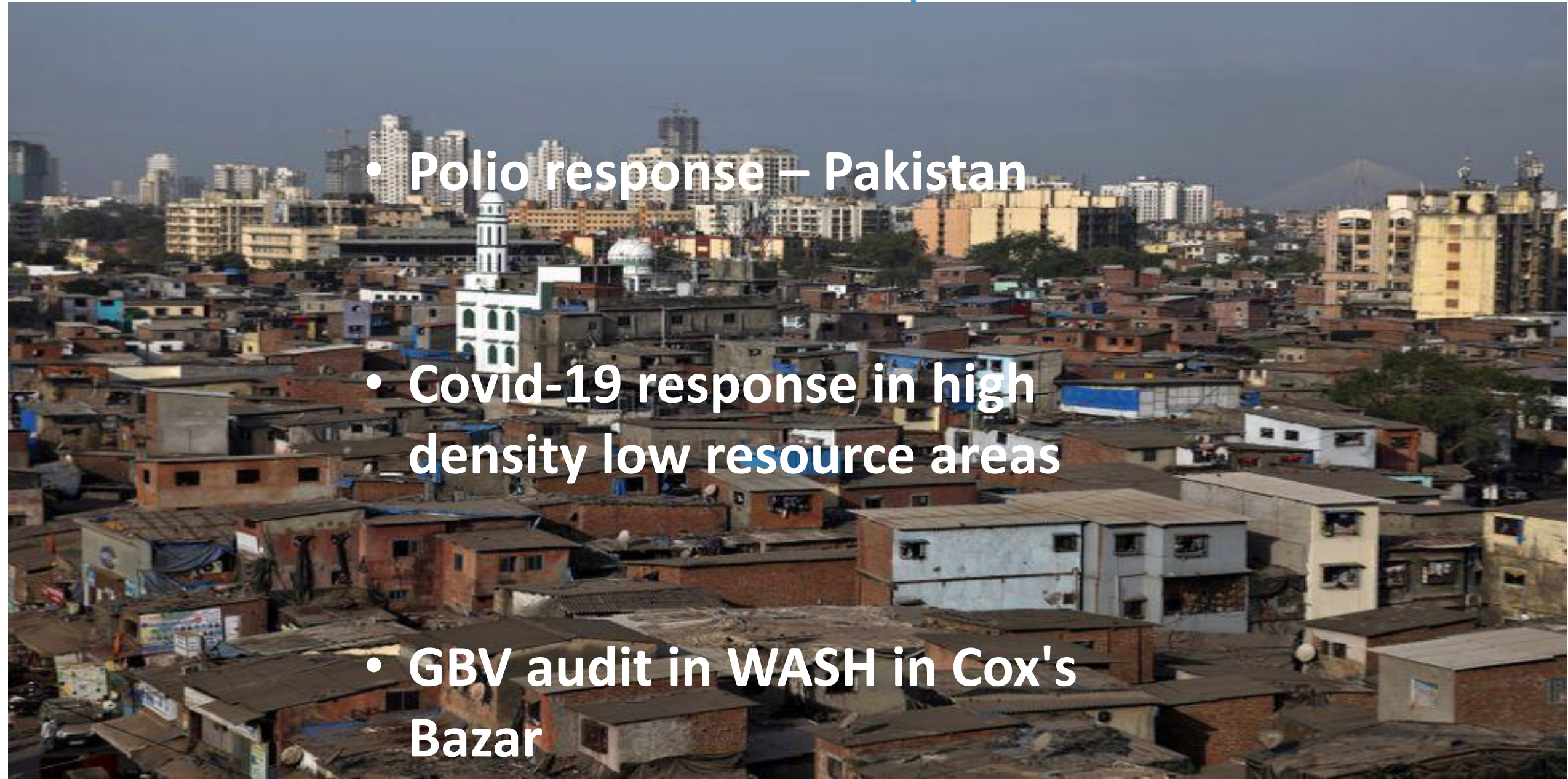
**1.9 times more
likely to have
diarrhoea**

**1.7 times more
likely to have
acute respiratory
infection symptoms**

**1.5 times more
likely to have a
fever**

Practical examples

- Polio response – Pakistan
- Covid-19 response in high density low resource areas
- GBV audit in WASH in Cox's Bazar



Key Messages

- **Inclusive, Integral, Integrated**
- **Equity from the start of our programme – and not as an add on. Who are we targeting and in what context.**
- **The human dimension of social inclusion**
- **Beyond technologies and technical designs**
- **The Ripple effect**

THANKS

