



WHAT IS KALAHI- CIDSS?

<https://youtu.be/Xa4RecSLIP4?si=T5eWxmbimECA8PTY>

KALAHI- CIDSS PLATFORM & KEY RESULTS



21,250 BARANGAYS



1,030 MUNICIPALITIES



73 PROVINCES



21.64 MILLION HOUSEHOLDS



15 REGIONS

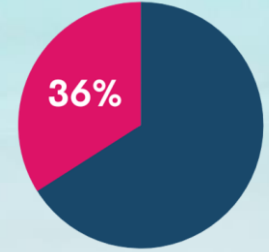
6,853

Personnel complement



2.40M+

Total number of community volunteers engaged



695,539

Women engaged in paid labor



76,410

Completed sub-projects



P1.35B+

Total labor cost for women



21.64M+

Total number of actual household beneficiaries



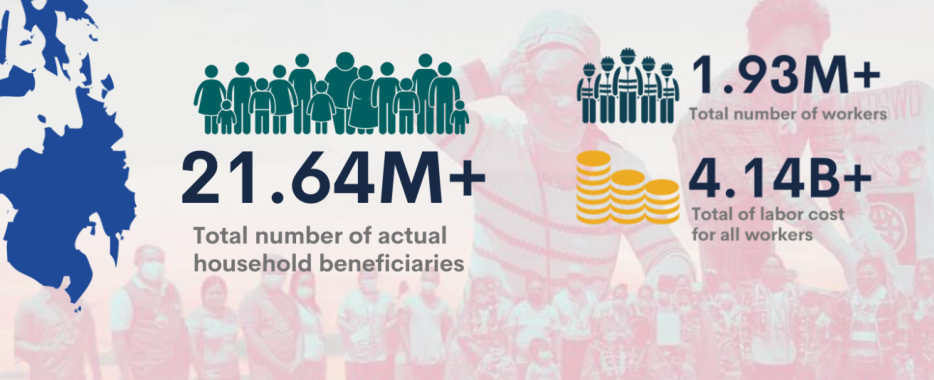
1.93M+

Total number of workers



4.14B+

Total of labor cost for all workers



KALAHI-CIDSS and COMMUNITY RESILIENCE



CDD AND RESILIENCE

EMPOWERMENT

Empowerment foster a sense of responsibility and resilience as communities become actively engaged in addressing their needs.

LOCALIZED DECISION

Local knowledge are tapped through CDD to identify more appropriate interventions this enhances community resilience by leveraging existing strengths

STRENGTHEN SOCIAL COHESION

CDD and its participatory process foster social cohesion which is essential for building resilience, when communities come together during times of crisis



CDD AND RESILIENCE

CAPACITY BUILDING

Equips the communities with knowledge and tools which strengthen their resilience to withstand and recover from shocks

ADAPTIVE MANAGEMENT

CDD provides flexibility and adaptability allowing communities to respond effectively to changing circumstances



After Typhoon Haiyan (Yolanda)



"Even the world's strongest typhoon failed to destroy KALAHI-CIDSS buildings. These are well-designed, structurally sound, and disaster-resistant."

Mayor Gene T. Fuente
Tangalan, Aklan, Philippines

After Typhoon Odette



Photo Courtesy: **DSWD Caraga**



PANAHON NG PAGKILOS

Community-Driven Climate Action



#BawatBuhayMahalagaSaDSWD



www.dswd.gov.ph



[dswdserves](#)



Panahon ng Pagkilos

Community-Driven Climate Action

- Leverages on the established local structure and capacity
- Aims to **empower communities** to achieve **locally-led climate resilience actions** and participate in **more adaptive and shock-responsive local planning, budgeting and implementation.**
- Aims to **contribute in strengthening community resilience** to climate risks.

**Maraming
Salamat!**

