

# ON'connect™

## Digital Services for the environmental transition

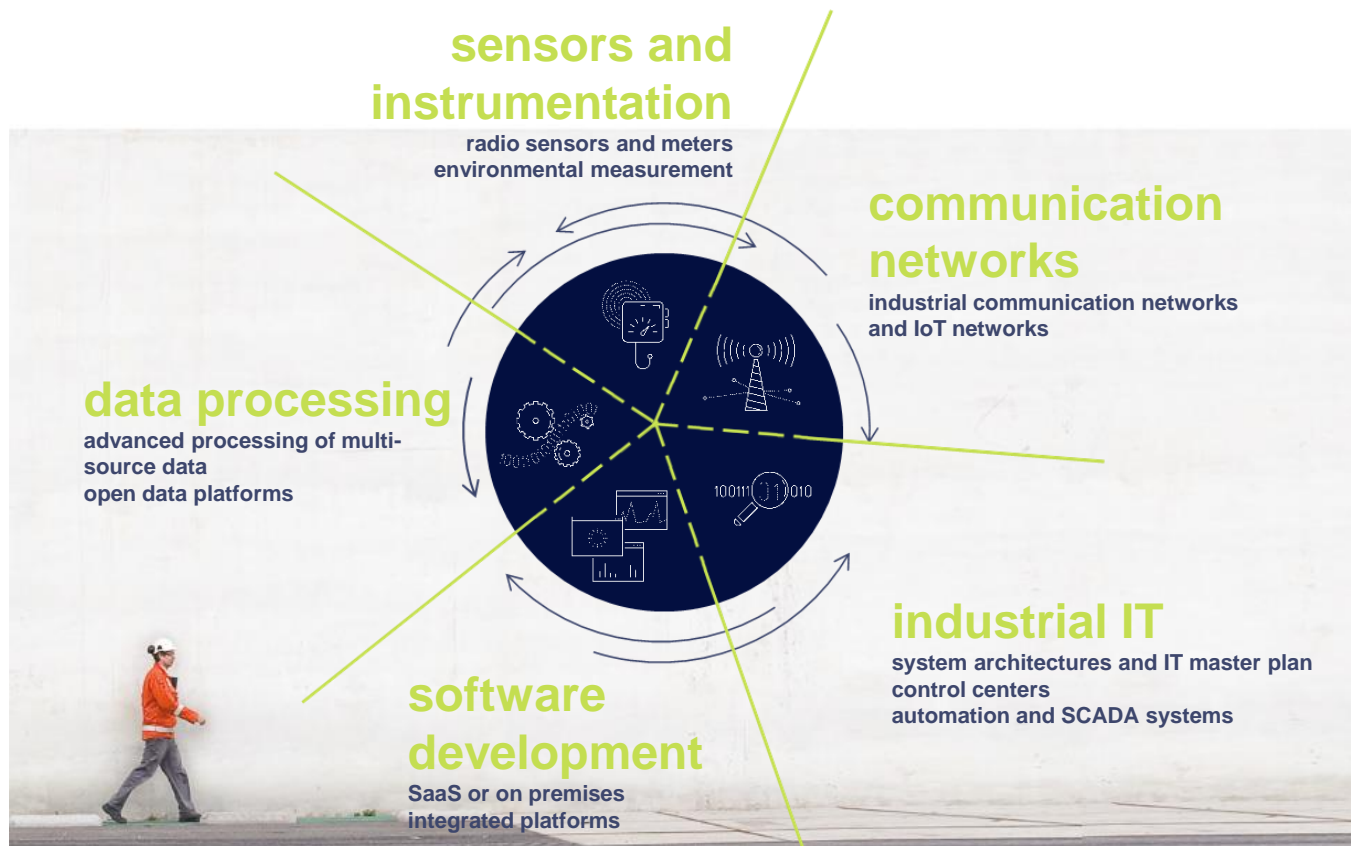


 suez

## key expertises

**we manage the complete value chain,** from connected devices to digital solutions design, communication networks and mass data processing.

---



# Key figures

**2009**

year of creation of **SUEZ Smart Solutions**, a wholly-owned subsidiary of the Suez Group

**300**

engineers and experts in the fields of **environment, real-time information systems and data processing**

**150M€**

turnover worldwide in 2019

**24**

countries benefiting from our services

**€10M**

annual investments for R&D and innovation

**1,000**

real-time platforms deployed for smart water management

**4,5M**

smart meters and sensors operated for utilities and cities

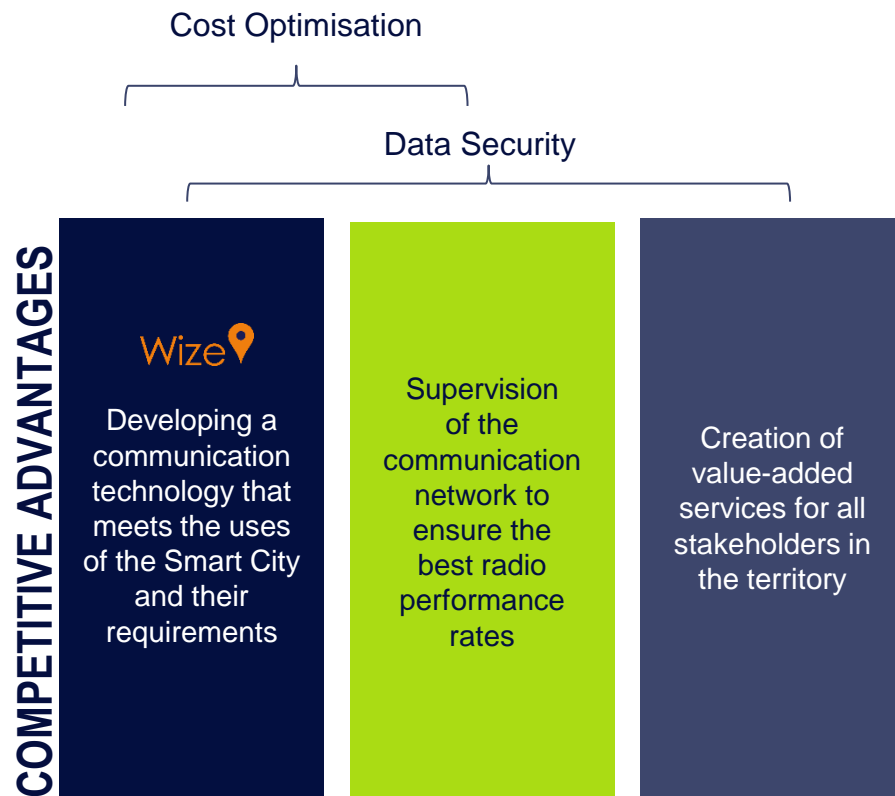


# The ON' connect™ range



The ON'connect™ range

Digital services  
resulting from the  
processing of data  
sent by connected  
objects



# The choice of the communication technology

Wize 

LPWA 169Mhz technology to meet the requirements of Smart Metering proven and improved for **15 years**:



## Radio performance

**>90 %**

Long-range radio frequency  
Specific to indoor & deep-indoor

## Optimized

**TCO**

Minimized Infrastructure  
(without repeater)

## Sustainability & Reliability

**7 million** connected objects  
of which **4.5** operated by SUEZ  
Guaranteed until 2042

## National coverage of the French territory

available on the entire country  
from 2022

## International development

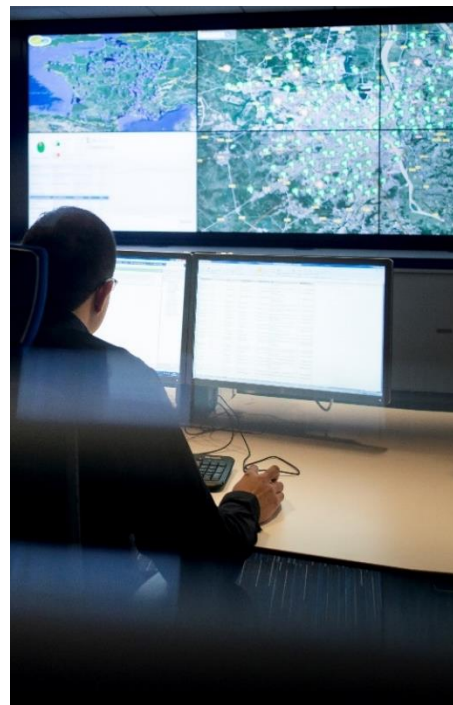
Licence free in Europe  
CEN European Standard



## Monitoring the radio performance

### From our Smart Operation Centers, SUEZ operators monitor Wize communication networks:

- **Monitor daily** the proper functioning of transmitters, concentrators, storage servers, the telecom transmission chain, etc.
- **Ensure remote operations** on the transmitters and concentrators (software updates, configuration, etc.).
- **Guarantee** to their customers the availability of reliable and high-performance data, 24 hours a day.
- **Assist operators** in the use and analysis of remote reading or monitoring solutions for the water network (leak detection, abnormal consumption, etc.).



Wize 

2

Control center  
(Barcelona, Paris)

4.5 million

Connected meters

+ 4 000

Supervised concentrators

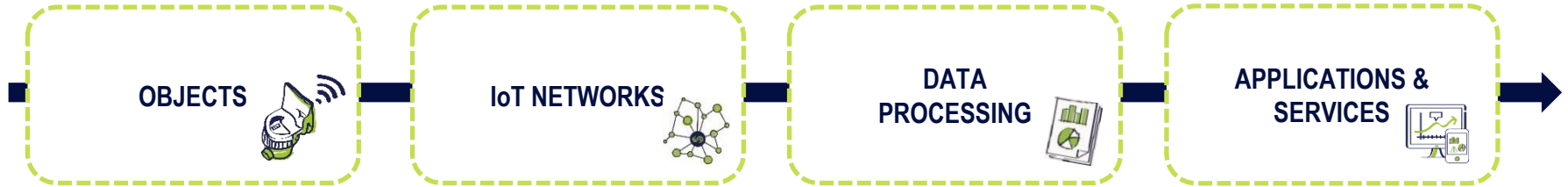
300 million

Data processed per day

ON'connect™ range

# SUEZ becomes an IoT player with expertise in the entire data chain

**From the connected object to the digital tools**





# ON'connect™ metering from manual reading to communicating meters

## Manual reading



**1 to 2 readings per year**  
A meter reader is required  
billing based on estimates

-

- Invoicing not transparent
- No asset management
- Required travel
- Tedious leak detection

## Mobile reading devices



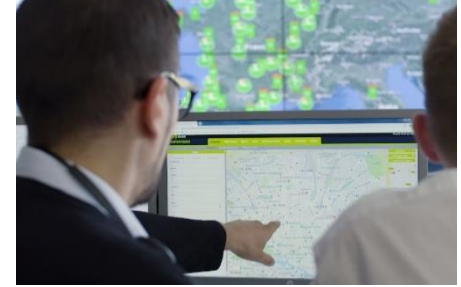
**Punctual reading (~ 4 times a year)**  
A vehicle is required / no disturbance  
billing based on estimates

-

- Data loss
- Required travel
- Permanent emission
- No asset management
- Tedious leak detection
- No associated services

ON'connect™  
metering

## Smart Meters



**"Remote reading"**  
Remote multi-daily reading,  
automatic, sending frequency  
configurable from 1 to 8 times a day

ON'connect™ range

## The remote reading that does more than billing!

Remote reading of  
metering data

**ON'connect™**  
metering

Eco-consumption  
service for households  
and businesses

**ON'connect™**  
coach

Remote control of a  
facility's water  
supply

**ON'connect™**  
switch

Optimizing the  
environmental  
performance of  
buildings

**ON'connect™**  
fluids

Prevention service for  
the senior citizens' loss  
of autonomy

**ON'connect™**  
generation

Real-time monitoring  
of tourist arrivals

**ON'connect™**  
tourism

Intelligent watering of  
parks and green spaces

**ON'connect™**  
spring


Wise network provider  
offer by SUEZ

**ON'connect™**  
infra

# Details of the solutions ON' connect™









**Renewal of the entire  
AMI solution for the city  
of Paris for 94 000  
connected static water  
meters**

 **Eau de Paris**

-  In 2005, a pioneer in AMI, Eau de Paris deployed a first generation of smart water meters. The entire left bank was already using 169 MHz radio technology
-  In 2017, the public utility chose SUEZ Smart Solutions and ON'connect™ metering to renew its solution of communicating meters with 169Mhz Wize technology.

**94 000**  
smart meters

---

**2 millions**  
connected households

---

**5 and a half years**  
term of the contract



**99 % ,  
a record-breaking data  
collection rate to  
improve the customer  
relationships**



**Water Authority of Mont de Marsan, France**

- With a network efficiency of more than 90%, the Régie municipale, which serves 40,000 residents with drinking water, is exemplary in terms of the performance of its distribution network.
- In order to continue to modernise its service, the local authority wanted to improve its customer relations: billing based on actual consumption, leak detection after metering, daily monitoring on the Internet, etc. The company also wanted to improve the quality of its service.
- Close collaboration between SUEZ Smart Solutions and the local authority has now made it possible to achieve a rate of uptake of around 99%.

**24 000**  
compteurs connectés

**277 kilomètres**  
De canalisations

**40 000**  
Habitants

# Design and integration of the connectivity service for 11 million smart gas meters in France



## GRDF

- GRDF is the public French national gas supplier of the country
- In 2012, the utility chose 169Mhz Wize technology for its national project of smart gas meters called “Gazpar”
- SUEZ Smart Solutions designs the communication chain: supplier selection, product design (meters, concentrators), definition of the communication protocol, tests.
- In 2017, GRDF is one of the founding member of the Wize Alliance

### 11 millions

of smart gas meters in 2023 (4M already deployed)

---

### 2042

Durability of the technology ensured

---



**Barcelona water utility  
deploying 169Mhz-Wize  
AMI solution for 1.5  
million meters**



**Aïgues de Barcelona**

- The public-private utility Aigües de Barcelona specialises in the management of the entire water cycle.
- It provides water supply to nearly 3 million people, offering the 23 municipalities in the Barcelona metropolitan region a customer oriented service, focusing on excellence in service delivery and commitment to innovation
- From 2015 onwards, the utility has decided to gradually deploy AMI for its **1.5M water meters** fleet

**500 000**

smart meters already deployed

**3 millions**

connected households

# Malta island facing significant challenges of water resource and demand management



## Malta – Water Services Corporation

- In 2010, facing water resource scarcity and demand management the Water Services Corporation, Malta's public utility for water management chose ON'connect™ metering
- Objectives of better conserving and accurately managing the island nation's limited water resources, offering new services to customers while encouraging a responsible behavior towards water consumption.

**430 000**  
inhabitants

**+ 1.8 millions**  
of tourists per year

**250 000**  
smart water meters

OBJECTS

IoT NETWORKS

DATA PROCESSING

SERVICES &  
MOBILE APP

ON'connect™ to

save on your water and energy bills and reduce your carbon footprint

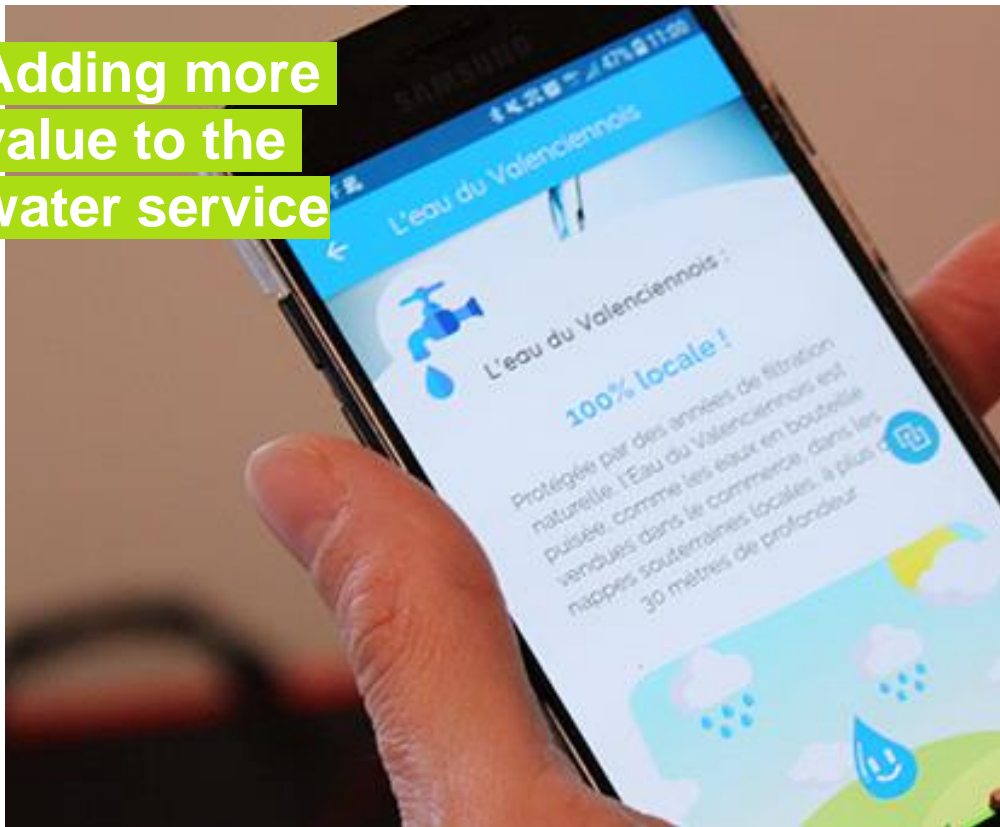
**ON'connect**  
coach

- Customized water consumption reports
- Leak and overconsumption alerts
- Practical tips for saving water and energy

\* ON'connect™ coach adapts to professionals in the region.



## Adding more value to the water service



### Valenciennes – Eau du Valenciennois

- Equipped since March 2019 with smart meters, the public water syndicate wants to increase transparency to its users.
- An application called Coach Cons'eau has been developed to share information on the quality of the distributed water.
- Making water saving "a collective challenge", ON'connect™ coach's reports and personalized advices are integrated into the mobile application.

**25**  
municipalities

**2 million**  
equipped households

# ON'connect™ to Monitor the water supply remotely

**ON'connect™**  
switch

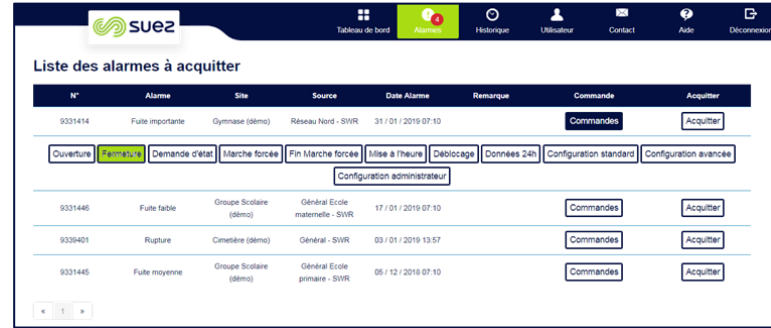
- Consumption monitoring by site
- Programming the opening and closing of valves
- Leak alarms and automatic shutdown of the water supply

OBJECTS

IoT NETWORKS

DATA PROCESSING

SERVICES &  
MOBILE APP



The screenshot displays the 'Liste des alarmes à acquitter' (List of alarms to be acknowledged) page. The interface includes a navigation bar with the SUEZ logo and menu items like 'Tableau de bord', 'Alarmes', 'Historique', 'Utilisateur', 'Contact', 'Aide', and 'Déconnexion'. The main content area features a table with columns for 'N°', 'Alarme', 'Site', 'Source', 'Date Alarme', 'Remarque', 'Commande', and 'Acquitter'. Below the table, there are several buttons for actions like 'Couverture', 'Demande d'état', 'Marche forcée', 'Fin Marche forcée', 'Mise à l'heure', 'Déblocage', 'Données 24h', 'Configuration standard', 'Configuration avancée', and 'Configuration administrateur'.

N°	Alarme	Site	Source	Date Alarme	Remarque	Commande	Acquitter
9331414	Fuite importante	Gymnase (démø)	Réseau Nord - SWR	31 / 01 / 2019 07:10		Commandes	Acquitter
9331448	Fuite faible	Groupe Scolaire (démø)	Général Ecole maternelle - SWR	17 / 01 / 2019 07:10		Commandes	Acquitter
9339401	Rupture	Cimetière (démø)	Général - SWR	03 / 01 / 2019 13:57		Commandes	Acquitter
9331445	Fuite moyenne	Groupe Scolaire (démø)	Général Ecole primaire - SWR	05 / 12 / 2018 07:10		Commandes	Acquitter





**Switch off the water supply as soon as a leak is detected to ensure the safety of the installations**



## Facilities (train stations, schools, etc.)

- Installations carried out at 10 stations, 1 camp and 10 high schools
- Pay back in less than a year thanks to the detection and repair of water leaks

### **ROI in less than a year**

On all 21 sites

---

### **148 leaks detected**

Of which 18 major leaks

---

### **30 %**

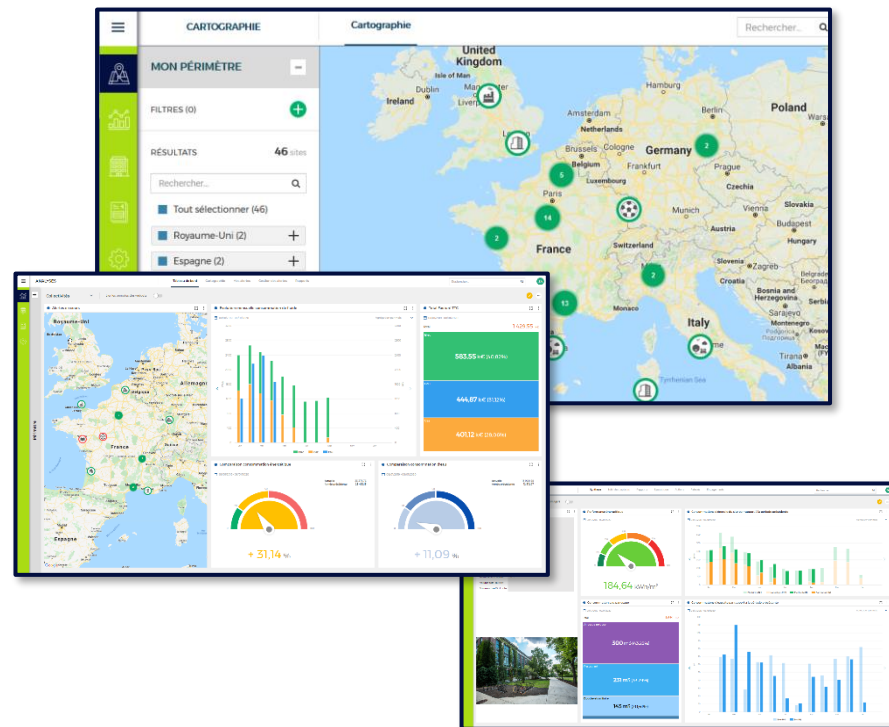
Saving on water invoices

ON'connect™ to  
**improve the environmental  
performance of buildings**

**ON'connect**  
fluids



- Centralization of **water, gas and electricity** consumption data
- Customizable and configurable dashboards and data analysis indicators
- Alerts at different levels to prioritize actions
- + Integration of other additional data
- + Installation of connected devices





## Monitoring water consumption on the 471 km of the motorway network



 **ESCOTA (Vinci)**

**VINCI**  
AUTOROUTES 

- VINCI Autoroutes management, like many companies, must improve their environmental performance (reduction of water and energy consumption, reduction of CO2 emissions, selective sorting and recycling of waste, etc.).
- In order to meet its environmental commitments, ESCOTA, a Vinci Group company, has chosen ON'connect™ pro to manage its consumption on its entire road network.

**200 sites**

equipped with communicating objects

---

**150.000 €**

Savings target to be achieved  
on the annual water bill

---

**44 users**

on a 100% SaaS secure platform

# ON'connect™ to optimize the watering of your green spaces

**ON'connect™**  
spring

- **Monitoring of daily and monthly water consumption per watering station**
- **Adapt automatic watering according to humidity and weather forecasts**
- **Detect water leaks and reduce watering consumption**
- **Facilitating the work of local teams**



Supervision - Espaces Vert

Rechercher

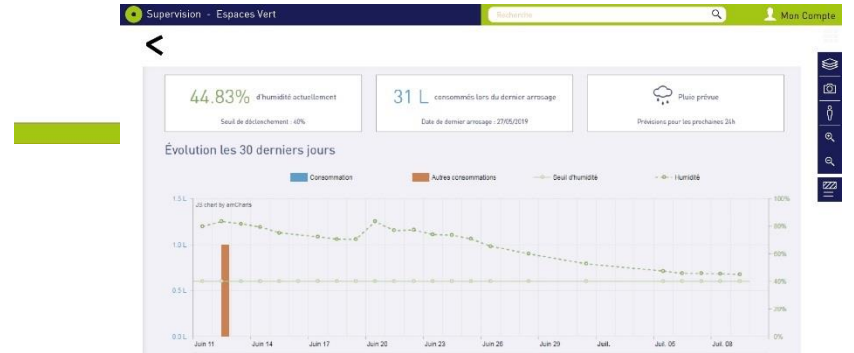
Mon Compte

Voir sur la cartographie

VDS AUTOMATES

Ajouter un automate +

Nom	Consommation arrosage programmé	Consommation théorique dernier arrosage	Consommation dernier arrosage	Date dernier arrosage	Taux d'humidité (seuil)	Consommation hors arrosage	
cinéclés de l'Ouest	30 litres	30 litres	30 litres	27/05/2019	44.83% (40%)	0 L	Modifier
Jardin des Plantés	33 litres	33 litres	33 litres	04/07/2019	47.78% (25%)	1 L	Modifier



# Greening Angers, the most green city in France !



## Angers Loire Métropole

- Angers, with 100m<sup>2</sup> of green space per inhabitant within the city walls. The preservation of this heritage is at the heart of the challenges of the Smart City project launched in 2019.
- System Won by the consortium led by ENGIE, SUEZ offers an anticipated, differentiated and centralised approach to public watering.

**30%**

Goal of reducing water consumption for irrigation purposes

---

**400**

Connected objects to deploy

---

ON'connect™ to  
**Support the well-being of seniors**

**ON'connect™**  
generation

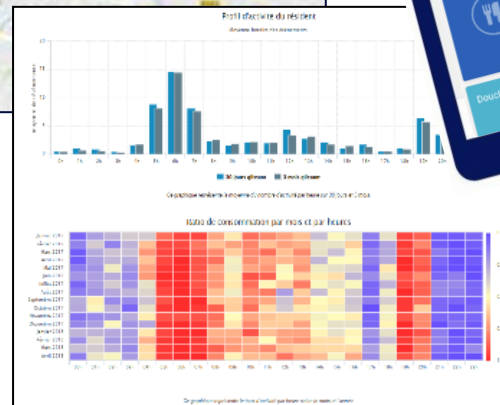
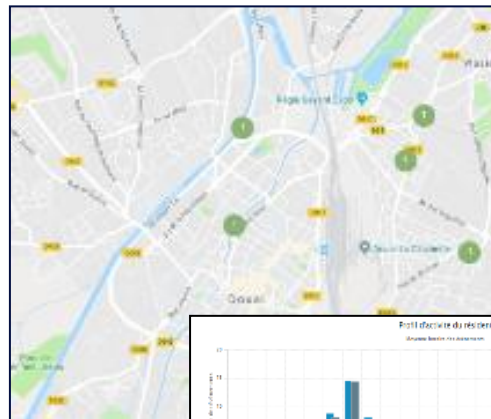
- Preventive monitoring of daily consumption habits
- Alerts (no consumption, repeated night consumption, etc.)
- Mobile Apps for family and friends

OBJECTS

IoT NETWORKS

DATA PROCESSING

SERVICES & MOBILE APP





**Objective data to  
strengthen support  
for residents**



**📅 Nursing Home Saint-Jean d'Angély in  
Nice (French Riviera)**

- To improve the support of its residents support, the community center of Nice chose ON'connect™ generation in 2017.
- The health care team has objective data that enables them to identify needs and therefore improve the services provided to residents.

**22**

Equipped Accomodation

**1 online platform**

Consumption monitoring

**Indicators related to the autonomy**

Movement, transfers, night consumption, change in consumption habits

ON'connect™ to  
**Manage tourist attractiveness**

**ON'connect™**  
tourism

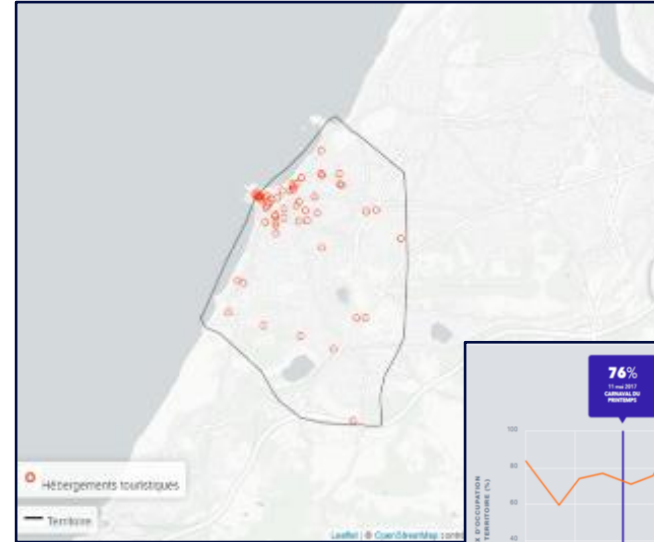
- **Real-time monitoring** of the number of visitors
- **Estimate revenues** according to the periods of the year
- **Forecast** the level of visitor attendance

OBJECTS

IoT NETWORKS

DATA PROCESSING

SERVICES &  
MOBILE APP



## Forecast tourist flows and ensure the promotion of the territory



### Biarritz – Tourism Office

- In 2017, the city of Biarritz deploys the ON'connect™ tourism offer to identify the factors that drive traffic to its territory (weather, tides, events, holidays, etc.).
- The tool differentiates between vacant and occupied accommodations through water consumption.
- Informed, the city knows its actual attendance and can estimate its associated revenues for a season.

---

#### **21,000 smart meters**

installed since 2014

---

#### **1 web platform**

real-time management and anticipation



ON'connect™ to  
**connecting its objects  
towards the smart city**

OBJECTS

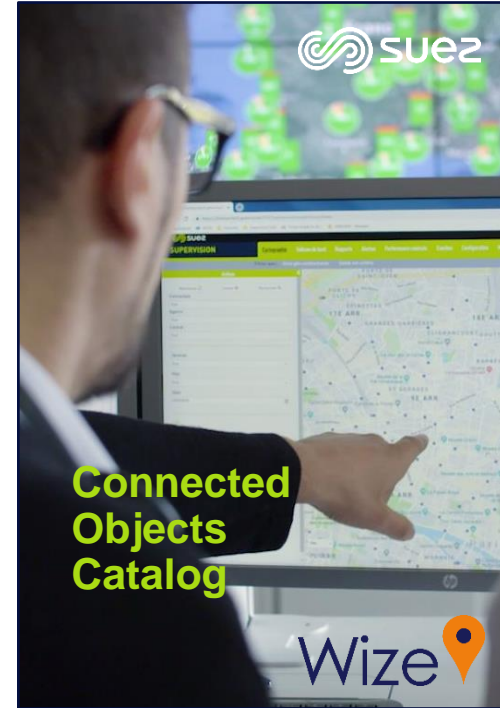
IoT NETWORKS

DATA PROCESSING

SERVICES &  
MOBILE APP

**ON'connect™**  
infra

- Having a dedicated and secure IoT network
- Have the IoT network supervised by a third party
- Receive raw data



# Connect all the gas meters in Bordeaux !



## **REGAZ, Bordeaux Métropole**

**REGAZ**  
BORDEAUX

- Following GRDF, REGAZ has decided to launch the generalisation of remote meter reading based on Wize technology from 2019.
- SUEZ has been entrusted with the supply of equipment to build the connectivity network as well as the implementation of a bi-directional communication platform allowing interconnection with the Customer Information System.
- Today, the metropolis has its Wize network, which it can use for other purposes

**230,000**

Communicating meters (deployment in progress over 7 years)

**100**

Gateway deployment in progress over 2 ½ years)

**5 years**

Application maintenance of the connectivity network and communication platform

For further enquiries, you can email to [puranut.w@suez.com](mailto:puranut.w@suez.com)

