



Online **ADB Sanitation Dialogue 2021**

ACCELERATING INCLUSIVE SANITATION

12–22 April 2021

Webinar 4: Sex, Sanctity and Sanitation for All

Jane Olley and Yaver Abidi

WSUP Advisory

This is not an ADB material. The views expressed in this document are the views of the author/s and/or their organizations and do not necessarily reflect the views or policies of the Asian Development Bank or its Board of Governors, or the governments they represent. ADB does not guarantee the accuracy and/or completeness of the material's content, and accepts no responsibility for any direct or indirect consequence of their use or reliance, whether wholly or partially. Please feel free to contact the authors directly should you have queries.

CWIS means sanitation for everyone in the city...

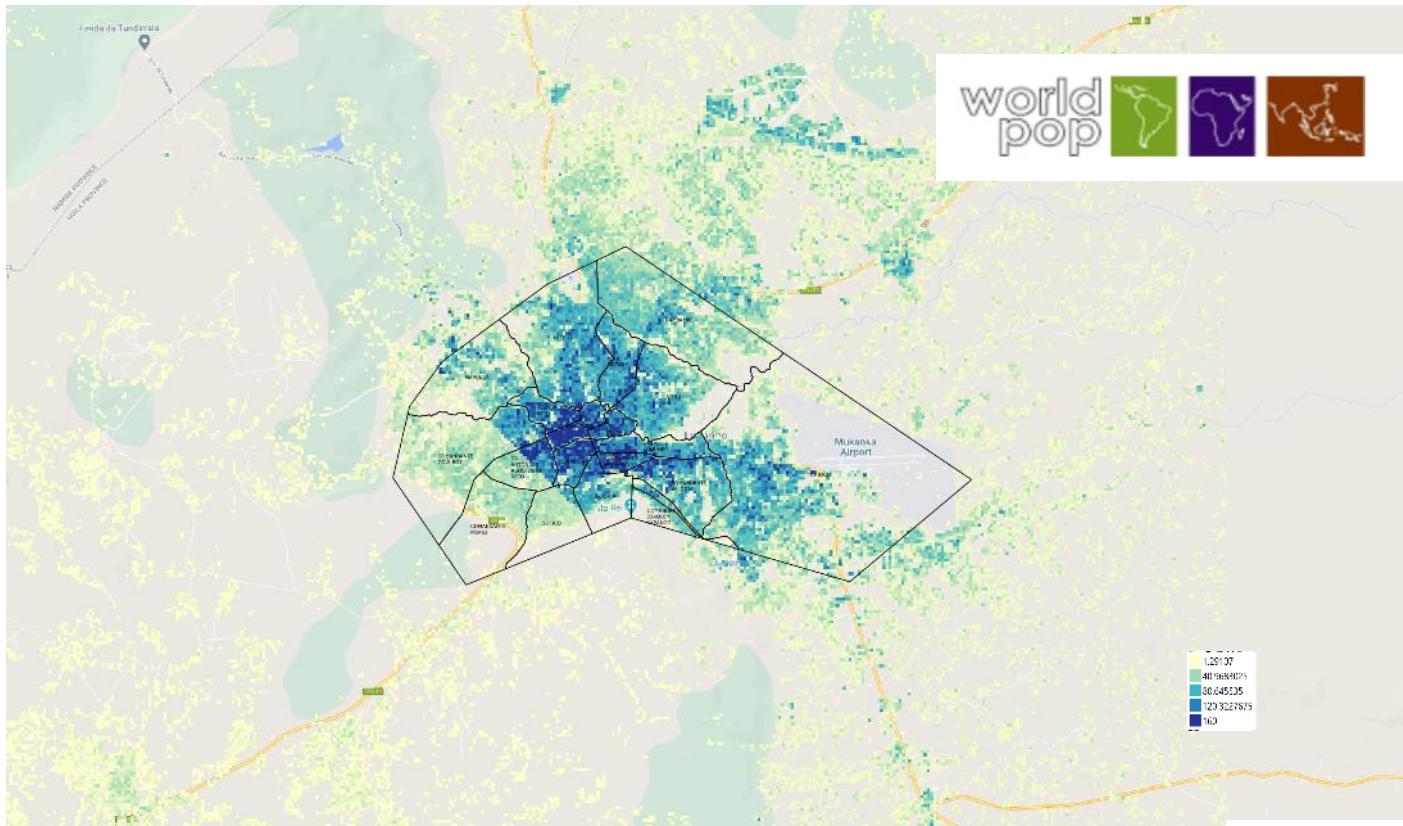
Traditionally when we talk about improving sanitation decision makers think about.....



Whereas the reality of sanitation in many cities is.....



...which begins with understanding the city as it really is....



Urban

Colonial centre

New urbanisations



Peri-urban

Upgradable areas

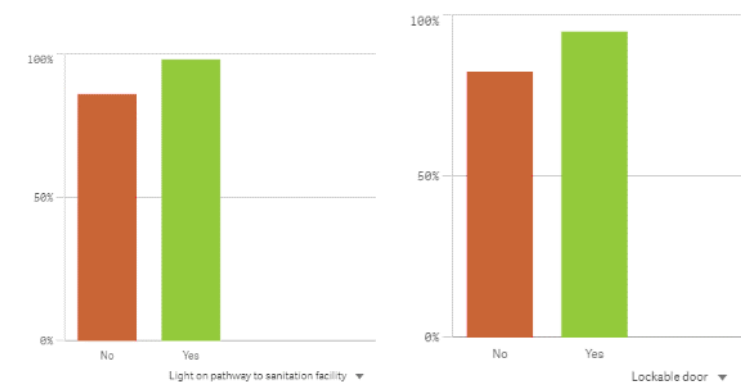
Slum-like areas



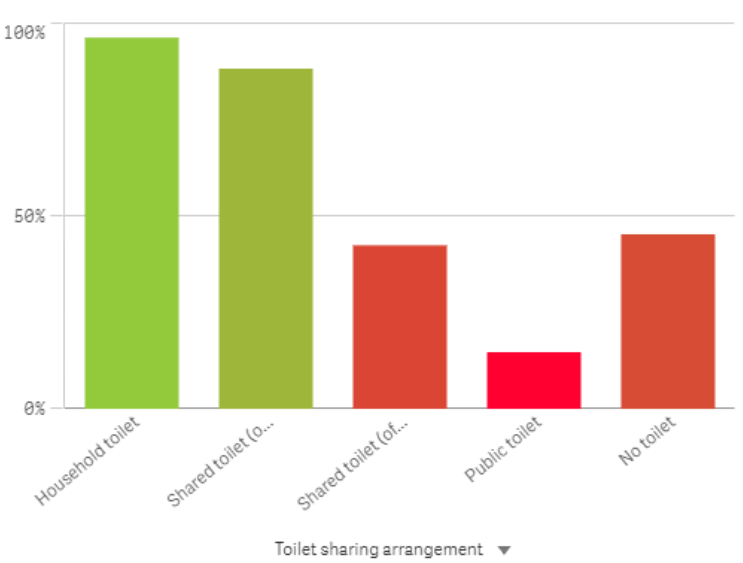
....and how its sanitation services are perceived....

We spoke to women/ girls in three cities in Madagascar to determine what factors impact on whether they feel safe using their toilet at night.

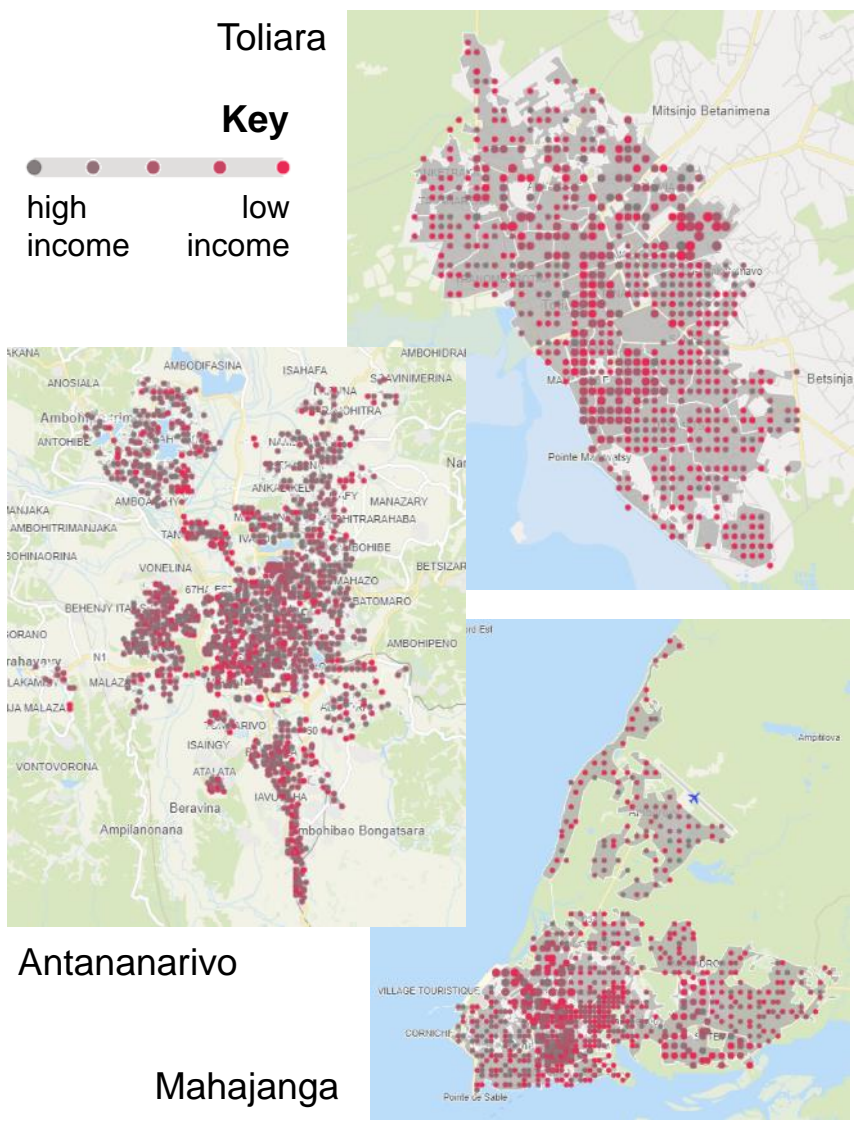
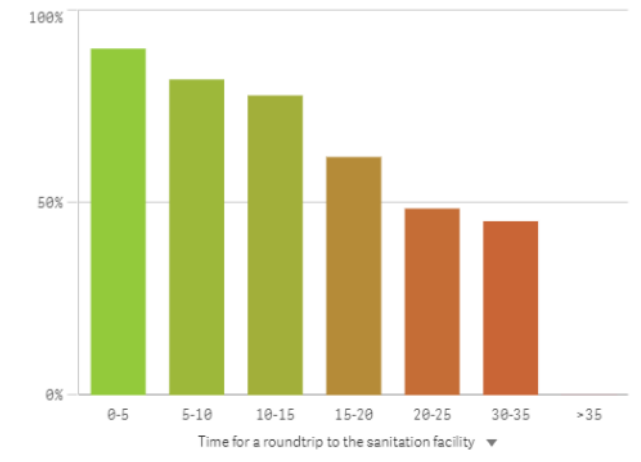
Perception of safety of those with and without lighting
 Perception of safety of those with and without lockable doors



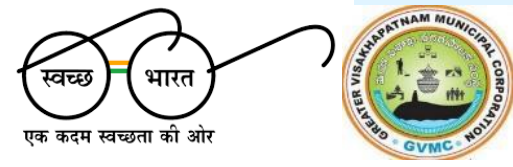
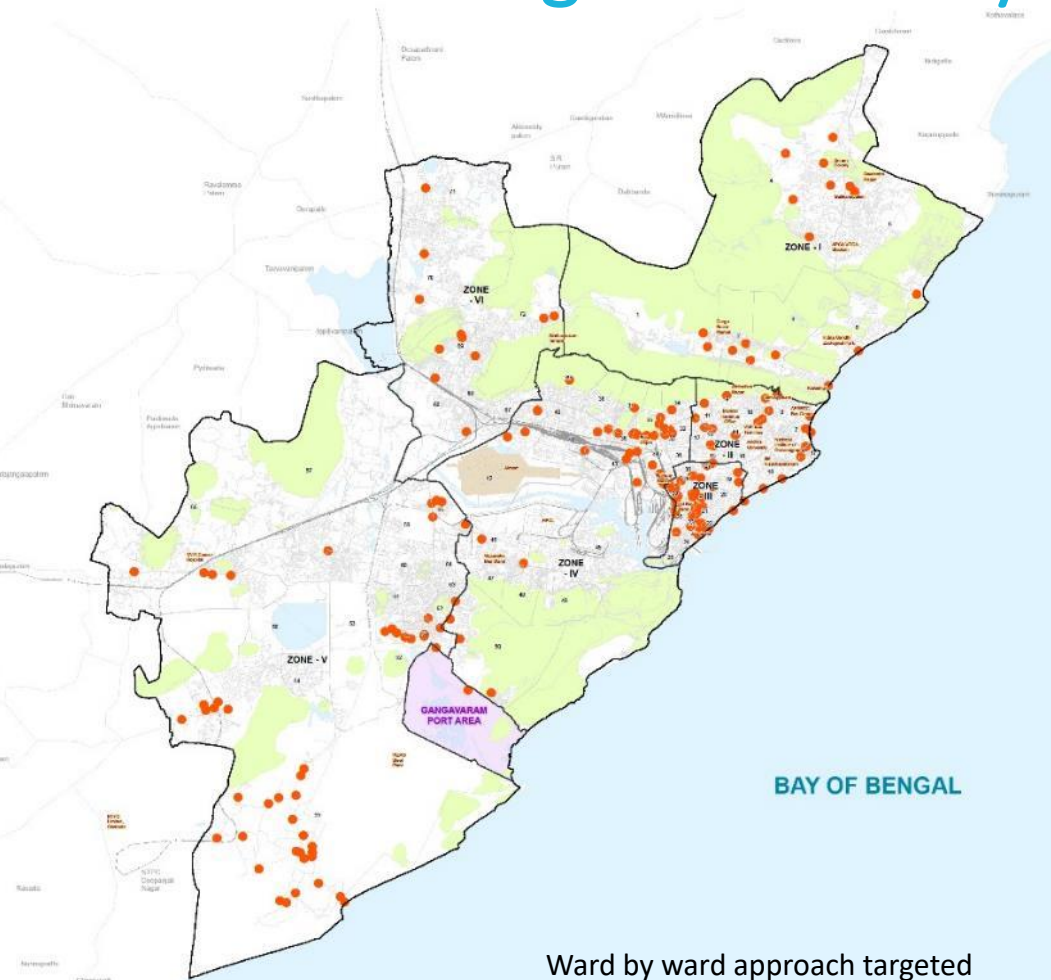
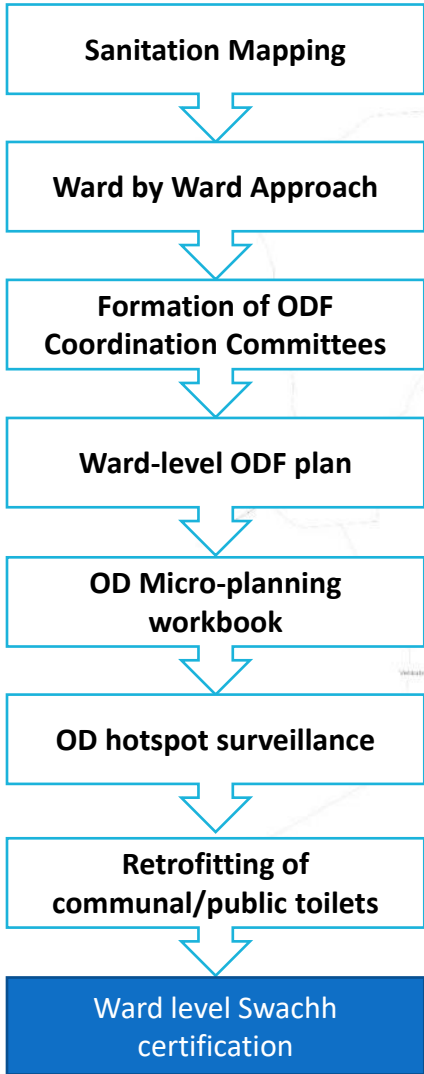
Perception of safety of those using different sharing arrangements



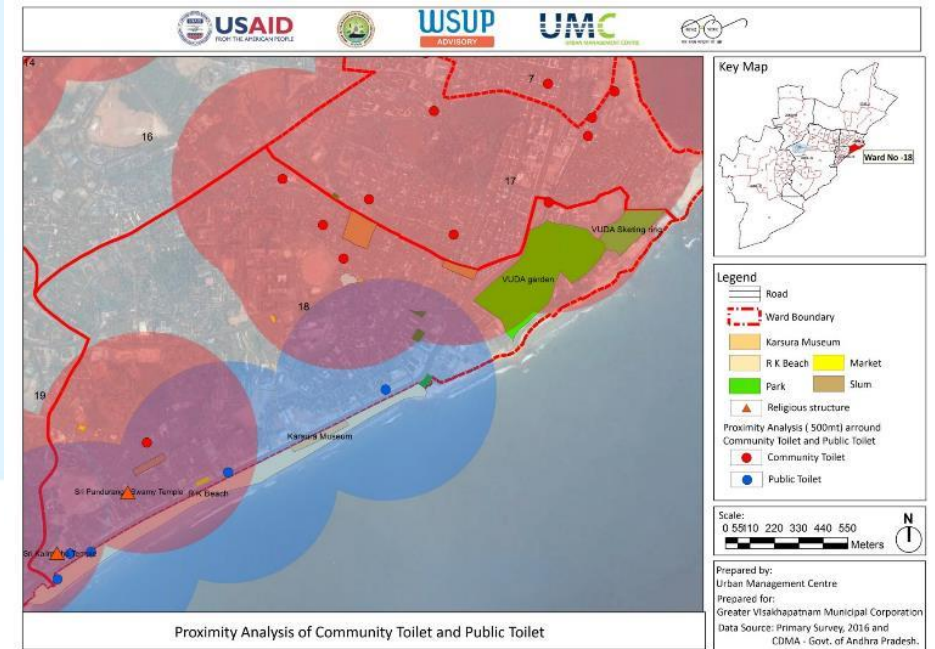
Perception of safety with different roundtrip times



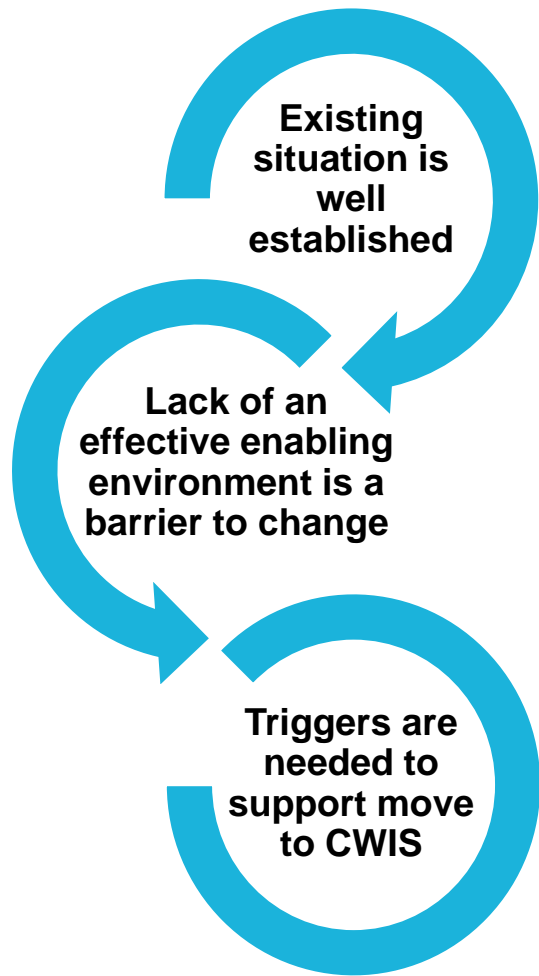
...so interventions can be targeted to everyone's needs and expectations



Ward by ward approach targeted areas with low levels of OD first and then extended over time to reach all 72 wards. Women played a key role in planning and overseeing sanitation improvements



But understanding is not enough to bring about change.....

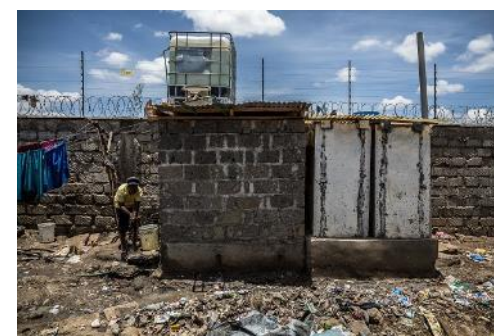
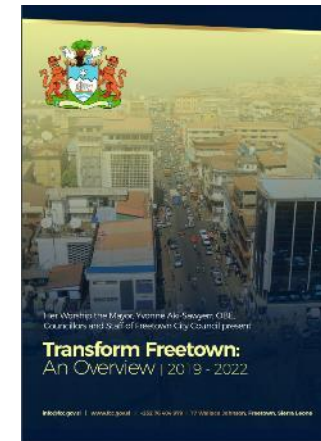


National response to SDGs

Political commitment



“The sector requires conscious efforts in the sanitation sector which include: 1) Inclusive urban sanitation approach that combines both sewerred and non sewerred sanitation services; and 2) A holistic strategy/approach in the form of a citywide/county wide inclusive sanitation plan “ WASREB 2020



Response to a crisis

...because improving sanitation requires disruptive change for everyone, especially the mandate holder...

Kenyan Utilities change in focus - water and **sanitation** company



From 2022, all water utilities are required to initiate FSM programmes



National Water and Sanitation Services Strategy (2019-2030) includes minimum targets of 40% sewered and 40% non-sewered by 2030

Effective enabling environment

Clear institutional mandates

Local policies and laws

Local regulations, (minimum standards and guidelines)

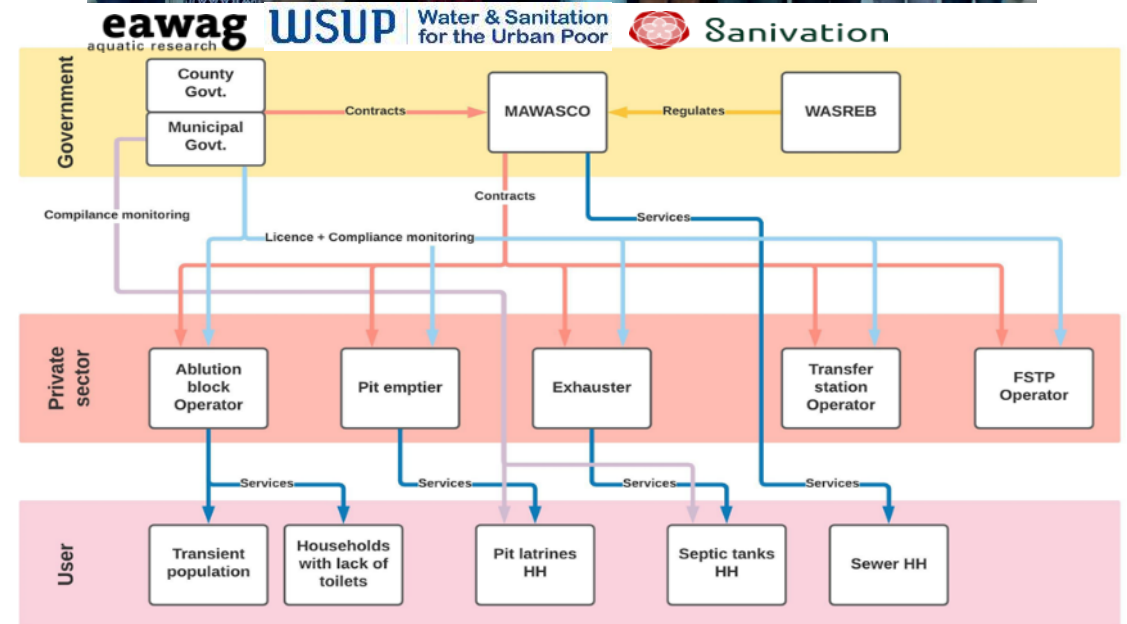
Participatory planning process

Clear financing mechanism

Clarifying mandates and improving coordination are key steps towards expanding service coverage and help to enhance accountability



Malindi, Kenya



... who needs to accept responsibility, develop a new mindset and skills and find viable business models to deliver CWIS.

National Technical Working Group

National Urban Sanitation Strategy (2015)

Regulatory framework for OSS and FSM (2016-2017)

Financing mechanism for toilet improvement and construction (2017-2018)

Law for the regulation of OSS and FSM (2018-2019)

Statutory instrument for the regulation of OSS and FSM (on-going)

2009-2015

When your latrines are full your know who to call!

Empty your latrine for as low as **250 ZMK**

DREAM TEAM

KANYAMA BIO-FERTS

- Odourless
- Affordable
- Effective
- Environmentally friendly

Beautiful lawns don't just happen!

LUSAKA WATER SUPPLY AND SANITATION COMPANY LIMITED
Water is Life... Value it!
Sanitation is Health

Lusaka Sanitation Programme (LSP) (2015-2022)



Upgrading and expanding sewerage networks in select neighbourhoods



Developing on-site sanitation infrastructure and service provision in peri-urban areas



Strengthen the capacity of LWSC



Key Takeaways

- A detailed understanding of the city, customers and existing sanitation services is essential for moving to improved sanitation for everyone
- Since everyone in the city has some type of sanitation, improving sanitation requires disruptive change
- Knowing what needs to happen is not enough; CWIS is a change process which needs to seek and leverage triggers for change
- The CWIS road map is built upon deep system understanding based on customer insight, service provider business transformation and a supportive enabling environment.

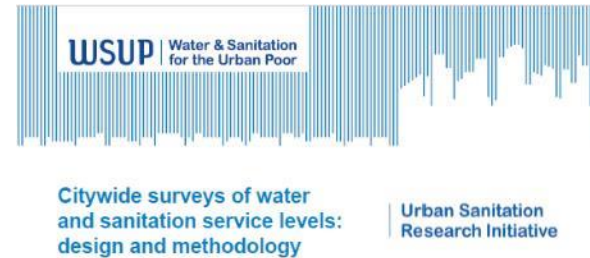
Thank you for your attention

WSUP | ADVISORY

<https://www.wsup.com/advisory/>

Jane Olley
Technical Manager
jolley@wsup.com

Yaver Abidi
Managing Director
yabidi@wsup.com



Dashboard available from:
wsup.catalysthost.cloud

- Public and open-source
- Please feel free to access the data

