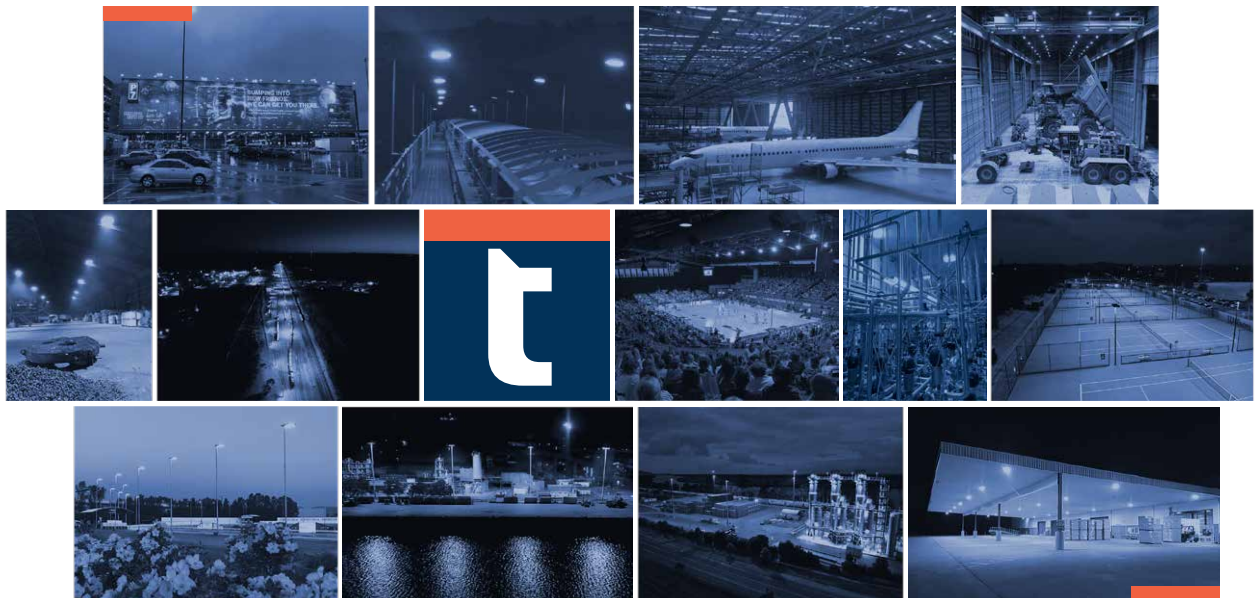


## CAPABILITIES & RESOURCES



**tigerlight®**

HIGH-PERFORMANCE  
INDUSTRIAL LIGHTING

## ABOUT TIGERLIGHT

### Who we are

Tigerlight is one of the original LED lighting specialists in Australia.

We have delivered tailor-made lighting solutions to the industrial sector for over 20 years and continue to grow strongly alongside our key partners, including major industrial and mining customers, electrical wholesalers and supply partners.

We are proud of our enduring relationships with quality organisations in heavy industry, mining, rail, aviation, food, logistics, primary production and military sectors in Australia.

Over the past two years, we have made significant investment in developing and expanding our internal lighting engineering capabilities, in line with the growing complexities in meeting all relevant Australian Standards, relating to electrical safety, lighting levels, obtrusive light mitigation and other environmentally-sensitive requirements.

Many of our installations occur in extremely challenging locations, so we ensure that our luminaires are capable of performing up to expectations - from day one. And for many years to follow.

We work closely with installers and produce detailed installation plans to ensure that installations are in accordance with our engineers' lighting plans to deliver a successful result. Every time.

One of our greatest achievements is building a stable team of customer service professionals who are, quite simply, "the best in the business."

Tigerlight is 100% Australian-owned and has one of the most experienced - and one of the most stable - management and customer service teams in the industry.

### Our Locations

Our head office, customer support centre and major warehouse are located in Warriewood, NSW.

Our secondary warehouse in Perth opened seven years ago to better support our WA customers and cut delivery times to them.

Our specialist lighting engineering team is located across our Sydney and Perth offices.

The Customer Service team consists of 10 experienced people spread across key market centres, servicing each state and territory.



## WHAT WE STAND FOR

### Our Mission

To deliver high-performing, energy-efficient lighting solutions to industrial Australia, by understanding the specific needs and tailoring individual solutions to suit those needs.

### Our Vision

To offer the most customisable high-performance industrial lighting range in the Asia-Pacific region, with market-leading lead times.

### Our Values

#### TRUST

- With extensive expertise in the lighting industry, businesses can trust our people to provide high-quality custom-built solutions

#### RELIABILITY

- We believe in providing outstanding value-for-money to our customers, through high-performance luminaires with outstanding reliability

#### QUALITY

- We aim to provide quality products, backed by quality client service and quality technical and warranty support.

#### CREATIVITY

- Modern technology and lighting control are opening more avenues to fulfil customer needs. We take a fresh, creative approach to deliver customers' desired outcomes. And to best satisfy lighting standards, budgetary and practical installation considerations.

#### DELIVER EXCELLENCE

- Our customer-first focus means that we strive to always deliver the best outcomes for our customers.

#### SUSTAINABILITY

- A core part of our range development is to ensure luminaires can be refurbished and reconditioned to extend service life and to minimise waste.

### Our Capabilities

Our capabilities include:

- national coverage
- industry-leading delivery times from our global supply partners
- local customisation of luminaire for rapid dispatch of tailor made products such as Megafloods, streetlights and Mako.
- ability to design unique luminaires for local conditions eg Mako area light
- fully accredited professional lighting design team
- expertise in obtrusive light mitigation
- warranty and compliance.



Australia-wide  
Australian-owned

## PRODUCTS & SERVICES

### Our Major Product Brands & Applications

We have established a major national presence in the following market segments:

#### Industrial indoor lighting

- Primo highbays and canopy lights

**primo**

#### Area lights

- Outdoor Floodlighting
- High-mast floods
- Car park lighting
- Billboard and signage

**MEGA  
FLOOD**

#### Weatherproof batten

- Silverback IK10 batten
- Emergency

**SILVERBACK**  
by tigerlight

#### Gantry and conveyor lighting

- Emergency
- Eye wash stations

**MAKO**

#### Sports lighting

- Output to 1920W / 220,000 lm

**STRIKER**  
High-performance sports lighting

#### Solar area lights and bollards

- Intelligent
- Fully programmable
- Customisable.

**S O L O**  
S O L A R   E N G I N E

**CORSO**  
intelligent solar lighting

## INNOVATIONS & UNIQUE MARKET OFFERINGS

### MAKO area light

The Mako area light was designed by Tigerlight in 2014 in response to the particular requirements of mining and other industrial customers. It has been a great success and is now available in several different forms and a full menu of different options

The logo for the MAKO area light, featuring the word "MAKO" in a bold, sans-serif font. The letter "A" is stylized with a sunburst or star-like shape inside it.

### TAILOR-MADE by Tigerlight

The modular structure of our MegaFlood and streetlight range allows literally thousands of combinations of options including wattage, voltage, optical lenses, CCT, bracket types, lighting controls, emergency options, and remote driver options.

Our TAILOR-MADE by Tigerlight initiative formalises this strategy and promises to manufacture lights to meet customers' exact specifications and have the lights in their hands in 7-8 weeks. Smaller orders are prepared in Sydney with 1-2 days delivery.

TAILOR-MADE  
by **tigerlight**

Individually designed and constructed  
to meet your exact requirements.

### Industrial-quality Off-grid solar lighting solutions

- CORSO PRO  
solar area lights
- SOLO SOLAR ENGINE  
Powering high output  
solar area lights

Tigerlight has been supplying industrial-quality solar area lights and bollards for the past 12 years.

New Corso PRO continues the on-going progression towards higher light output and improved autonomy.

The logo for CORSO PRO, featuring the words "CORSO" and "PRO" in a bold, sans-serif font. The "O" in "CORSO" is stylized with a sunburst or star-like shape inside it.

We have recently introduced a new range of programmable solar engines to power higher wattage Tiger area lights for a wide variety of industrial applications, on a plug-and-play basis.

The logo for SOLO SOLAR ENGINE, featuring the word "SOLO" in a bold, sans-serif font, followed by a sunburst icon and the words "SOLAR ENGINE" in a smaller font.

### HACCP-Certified food grade & IP69K luminaires

Tigerlight has introduced a range of Food-Safe canopy lights, high bay lights and IP69K battens which are HACCP certified for use in the food and pharmaceutical industries.

The logo for HACCP AUSTRALIA PROGRAMME CERTIFICATION, featuring the words "HACCP AUSTRALIA" and "PROGRAMME CERTIFICATION" in a bold, sans-serif font, with a stylized "D" and "O" icon.

## REFERENCE PROJECTS - HEAVY INDUSTRIAL

Manildra Group,  
Bomaderry, NSW

MVR Evaporator and Bulk Quarantine Area

- Mako area lights
- MegaFloods from 40W to 960W in container yard
- Approx \$750k delivered on retrofit and D&C projects to-date.

Contact: Josh Coburn, Electrical Projects Co-ordinator

Email: [josh.coburn@manildra.com.au](mailto:josh.coburn@manildra.com.au)



NSW Government  
Mindyarra Rail  
Maintenance Precinct,  
Dubbo, NSW

Current project: Maintenance workshops, Maintenance platforms & Stabling yards for bi-modal locomotives

- 840 x assorted 80W to 200W MegaFloods, inc DALI dimming, remote drivers, CRI 80.

Contact: Daniel Nugent, Systems / Quality Manager,  
ARA Indigenous Services

Email: [daniel.nugent@araelect.com.au](mailto:daniel.nugent@araelect.com.au)



## REFERENCE PROJECTS - HEAVY INDUSTRIAL

QANTAS  
Sydney Airport,  
Mascot, NSW

Sitewide LED Upgrades both for internal maintenance hangars and external aprons. The main objective was to increase light levels in-line with strict CASA regulations with the added benefit of ongoing maintenance savings and contributions to the clients

BlueScope Steel,  
Western Sydney  
Service Centre,  
Erskine Park, NSW

Project Pearl – Brand New State of The Art facility for painting of Colorbond's finished products in Western Sydney.  
Large floodlighting for high ceilings, high bays and emergency lighting supplied

Electranet  
S.A. Power Networks  
South Australia

Statewide substation lighting upgrade  
• 374 x 450W MegaFloods for statewide substation LED upgrade, overseen by GPA Engineering.

Melbourne Jet Base  
Tullamarine, Vic

New construction project - greenfield site.  
• 100 x 450W MegaFloods - Main Hangar and DC3 exhibition hangar/function space  
• 8 x 600W MegaFloods wall-mounted over apron



## REFERENCE PROJECTS - HEAVY INDUSTRIAL

### Visy Glass Yatala, Qld

Tigerlight's sales and lighting engineering divisions were involved in the design of lighting in the new construction of Visy Glass' new facility in Yatala. Lighting was supplied to the cullet plant and automated storage and retrieval system facility. Lighting included bay lights up to 960W, Mako and Bulkhead gantry lighting and emergency fittings.

### Infrabuild Steelworks (OneSteel) Mayfield, NSW

Sitewide LED upgrade covering Mayfield steelworks, including wire mill, galvanizing line, bar mill, national distribution centre.  
Approx \$2mil Tigerlight LED luminaires supplied including:

- Over 1,200 LED high bays ranging from 70W to 260W.
- MegaFloods from 80W to 960W
- Streetlights for internal roadways.

Contact: Matthew Smith, Electrical Reliability Engineer  
Email: [matthew.smith@infrabuild.com](mailto:matthew.smith@infrabuild.com)

### Alcoa Portland Aluminum Smelter, Portland, VIC

Mako conveyor and area lights - standard and emergency - illuminate much of the plant under a lengthy retrofit program. Tigerlight Streetlights also illuminate internal roadways.

### WANT Cotton Gins Katherine, NT & Kununurra, WA

Two brand new cotton gins in Katherine, NT and Kununurra, WA which will service the booming cotton industry in Northern Australia.





## REFERENCE PROJECTS - MINING

Covalent Lithium,  
Kwinana Lithium  
Refinery, WA

Over 3,100 luminaires supplied for the newly constructed lithium refinery in Kwinana, south of Perth.

- Over 2000 x Mako area lights, including emergency and eye-wash station lights
- Mako Bulkhead lights
- Floodlights, ranging from 80W to 720W
- Bay lights.

BHP Nelson Point  
Rail Precinct,  
Port Headland, WA

Deployed over 500 x 480W asymmetric floodlights in 3000K throughout rail shunting yards and crossings in the Nelson Point rail yards.

Newmont  
Cadia Valley  
Operations,  
Orange, NSW

High output high bay in Float tanks & Milling halls  
Primo LED high bays in HV workshop  
110 X Primo 17K in onsite Distribution Centre  
New Tailings Dam MIA precinct area lighting

Bravus -  
Carmichael Coal Mine,  
Belyando, QLD

Service and tyre Bay Lighting including high output asymmetric floodlighting, gantry and staircase lighting including emergency lighting and green eye wash luminaires.



## REFERENCE PROJECTS - MINING

Jellinbah Mine  
Jellinbah, QLD

- R.O.M. pad lighting LED upgrade
- 94 x 960W LED floodlights, Asymmetric lens, with custom-made cable gland entry
  - 40K Primo LED highbays throughout H.V. workshops



BHP  
Carrapateena  
Copper Mine,  
Pernatty, SA

Hundreds of floodlights ranging from 120W to 480W were deployed for this newly constructed BHP copper mine south of Olympic Dam.  
Primo LED high bays supplied for workshops also.

FMG 220kv  
Substations  
Pilbara Region, WA

LED floodlights for 4 new D&C substation projects at each of FMG's North Star, Solomon, Eliwana & Flying Fish mine sites.

## REFERENCE PROJECTS - MINING

Rio Tinto  
Cape Lambert  
Workshops,  
Pilbara, WA

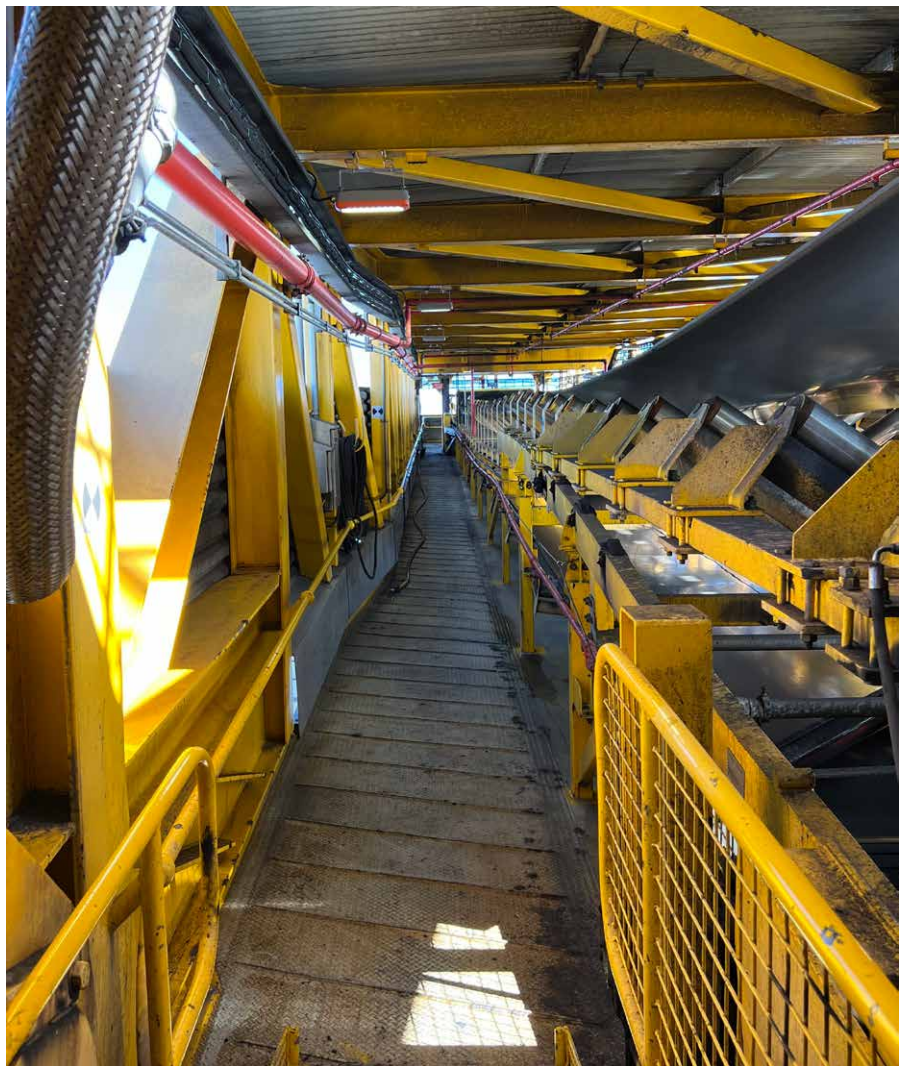
Supply of external and car park lighting for 3 separate workshops at the Cape Lambert Port operation. Local environmental factors require amber turtle-friendly CCT which Tigerlight supplied in all fittings.

Glencore  
Bulga Coal Mine,  
Upper Hunter  
Valley, NSW

LED lighting retrofit of external lighting in HV workshop, hardstands, tyre bay igloos. Truck wash bays & streetlights.

Port Waratah  
Coal Services,  
Newcastle, NSW

LED retrofit program on coal loaders, train receival stations, internal roadways and car parks.





## REFERENCE PROJECTS - HACCP CERTIFIED FOOD GRADE LIGHTING

Simplot  
Frozen Vegetable  
Processing Facility,  
Devonport, TAS

Tigerlight MIES lighting design team have been assisting Simplot to upgrade lighting at the Devonport frozen vegetable plant with HACCP approved lighting. Projects have included canopy lighting, emergency lighting and external gantry lighting.



Youfoodz  
Berinba plant,  
QLD

Supplied internal luminaires for the new state-of-the-art production facility:

- 500 x 15K Canopy lights (HACCP)
- 60 x Primo bay lights for warehouse
- MegaFloods for the carpark areas.



## REFERENCE PROJECTS - HACCP CERTIFIED FOOD GRADE LIGHTING

Kellogg's Australia  
Botany Plant

Sitewide retrofit of production areas, using HACCP approved luminaires:

- 1000 Bay lights (HACCP)
- 2000 Food grade 1200mm battens (HACCP)
- 200 Integrated emergency battens (HACCP)

TASSAL  
De Costi Seafoods  
Lidcome, NSW

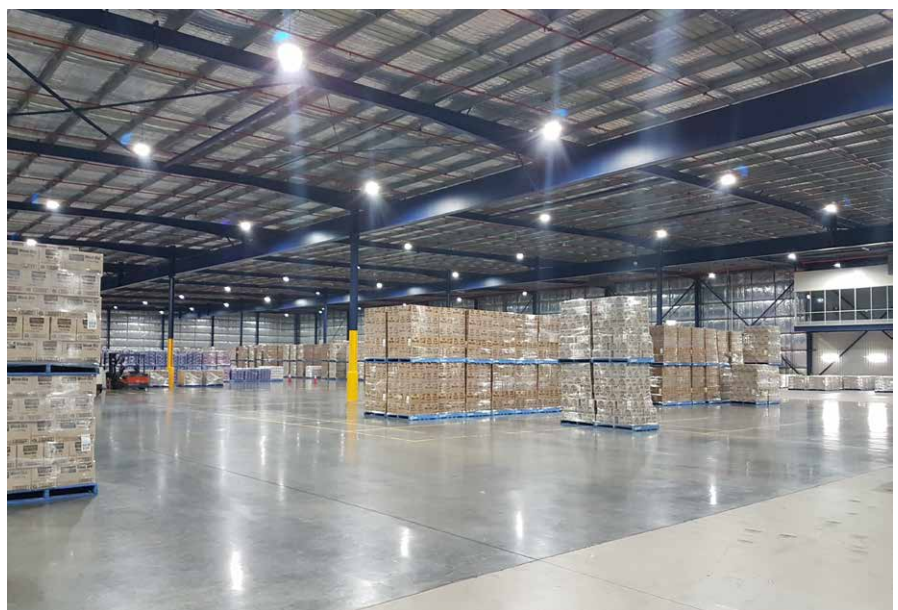
Tassal recently chose Tigerlight as their preferred HACCP lighting solutions provider to complete a site wide LED Retrofit project as part of their global nett zero initiative. The project has seen a dramatic increase in not only lighting levels but also quality of light ensuring their products are produced to the highest of standards.

Teys Abattoir  
Biloela, QLD

Sitewide lighting upgrade, including HACCP approved IP69K battens and canopy lights, cold stores, boning room, lairage, external walkways and car parks.

Sanitarium  
Health Food  
Company,  
Berkeley Vale,  
NSW

Major LED retrofit across factory and warehouse, including over 900 High Bays, carpark lighting and Food Grade battens and Silverback battens.



## REFERENCE PROJECTS - MUNICIPAL LIGHTING

Thurgoona Trail  
& Pedestrian Path  
City of Albury, NSW

10.8km bike path illuminated by 374 x Mako area lights, 223 of which were fitted with a microwave sensor.



Sydney Port  
Authority,  
Botany NSW

Port Botany Foreshore walk - 2km walking track with fully off-grid lighting solution, featuring 81 x 160w Solo Solar Engines with 20W Mako LED luminaires. Lighting design was fully compliant with strict obtrusive lighting guidelines, due to proximity to Sydney Airport.

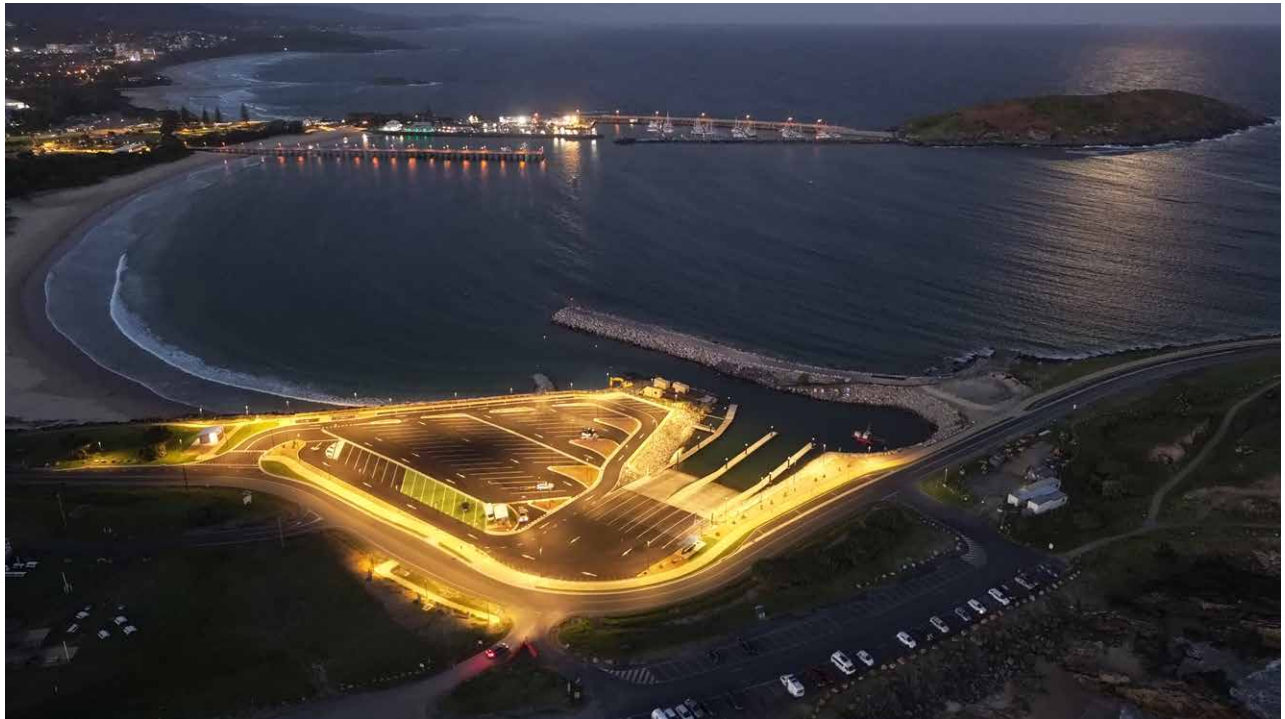




## REFERENCE PROJECTS - MUNICIPAL LIGHTING

Coffs Harbour  
Boat Ramp  
Coffs Harbour NSW

Dali controlled Streetlights in custom powdercoating in 3000k were installed at the new Coffs Harbour boat ramp and car park.



Tangentyere  
Council  
Karnte Camp  
Alice Springs NT

Solar roadway lighting for a community south of Alice Springs. Solo solar engines with 3000K Mako area lights were used throughout this project.



## REFERENCE PROJECTS - MUNICIPAL LIGHTING

Bunbury Youth  
Precinct,  
Bunbury WA

Area lighting in 3000k with DALI control for new, state of the art youth precinct including skate park. Floodlights supplied were up to 320W.



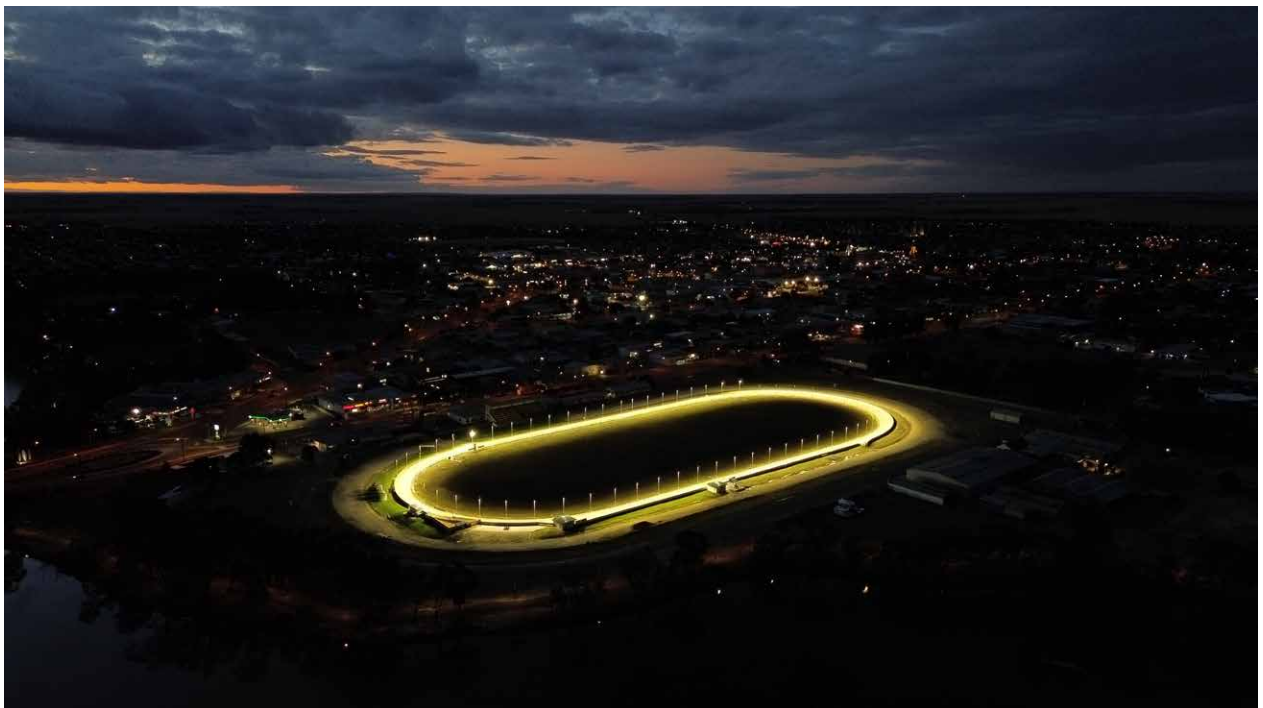
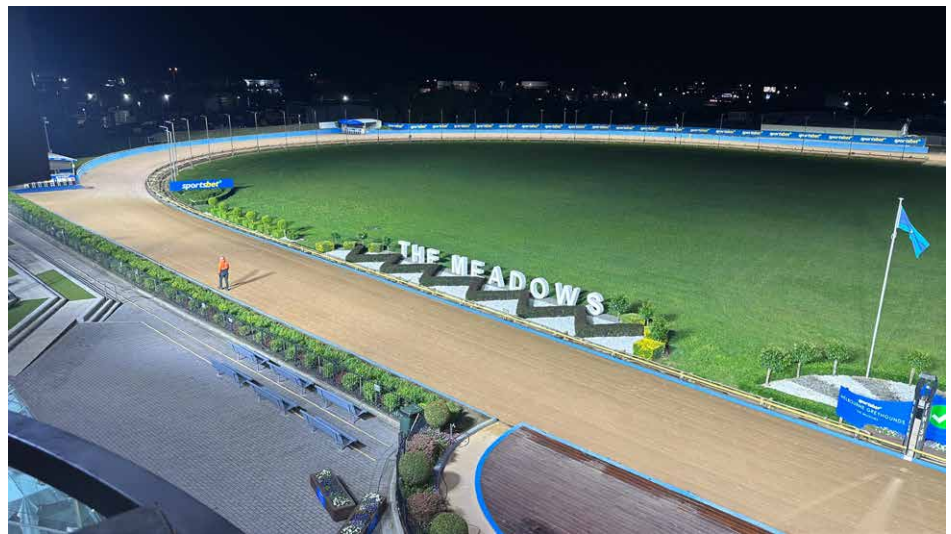
## REFERENCE PROJECTS - SPORTS LIGHTING

### Greyhound Racing Victoria

Multi track lighting upgrade.

Tracks completed include

- The Meadows – Melbourne Greyhound Racing Club (top)
- Horsham Greyhound Racing Club (bottom)
- Ballarat Greyhound Racing Club
- Warrnambool Greyhound Racing Club
- Geelong Greyhound Racing Club





## REFERENCE PROJECTS - SPORTS LIGHTING

Northam  
Hockey Club  
Shire of Northam,  
Northam, WA

New hockey field development

- 500 lux light level
- 12 x 1440W Striker Sports Lights
- 20 x 1920W Striker Sports Lights.



Solar Mad  
Stadium  
Griffith, NSW

Striker Sports floodlighting providing 200 lux to the soccer pitch.



## REFERENCE PROJECTS - DEPARTMENT OF DEFENCE

Holsworthy  
Army Barracks,  
Sydney NSW

Sitewide streetlight upgrade (600+ luminaires) LED high bay upgrades (over 700 pieces) fitness facility upgrades including tennis, squash, basketball & gymnasium

Williamtown  
RAAF Base,  
Newcastle NSW

Aircraft apron LED upgrade

Lone Pine Barracks,  
Singleton, NSW

Sitewide streetlighting upgrades

HMAS Penguin &  
HMAS Waterhen,  
Sydney NSW

HMAS Creswell,  
Jervis Bay NSW

HMAS Albatross,  
Nowra NSW

Randwick Barracks,  
Sydney NSW

Richmond RAAF Base  
Richmond NSW

Wagga Wagga  
RAAF Base,  
Wagga Wagga NSW



**Australian Government**

**Defence**

tigerlight®

HIGH-PERFORMANCE  
INDUSTRIAL LIGHTING

HEAVY INDUSTRY

MINING

RAIL

PRIMARY PRODUCTION

MUNICIPAL LIGHTING

LOGISTICS

MILITARY

AVIATION

FOOD & PHARMA

SPORTS LIGHTING



tigerlight®

T 1300 184 437  
F 02 9913 8876  
E [info@tigerlight.com.au](mailto:info@tigerlight.com.au)

**National Support &  
Distribution Centre**  
Unit 8, 1 Vuko Place,  
Warriewood, NSW 2102

**Western Australia  
Office & Warehouse**  
Unit 3, 1 Distinction Road,  
Wangara, WA 6065

[tigerlight.com.au](http://tigerlight.com.au)

 [Tigerlight Pty Ltd](#)

 [TigerlightLED](#)

Not for reproduction or transmission without permission. © 20250203

