



**eZIP**<sup>®</sup>  
track blind

EXTENDED  
**10YEAR**  
WARRANTY  
Terms & Conditions apply

Designed to perform

[eZIP.com.au](http://eZIP.com.au)





# Experience true outdoor comfort

Looking for the ultimate way to bring the outdoors in? Whether you want to shield the weather for the ideal outdoor kitchen, enclose the pergola or create your own alfresco courtyard, eZIP® track blinds are the perfect solution.


Designed to perform in the harsh Australian environment, eZIP®'s robust high density aluminium frame has exceptional built in flex resistance to ensure problem free blind motion.

With its patented multi-direction tension setting, eZIP® track blinds always look good with optimal blind alignment for a taut blind fabric result that compliments any outdoor setting.

With either a 135mm, or 175mm slim and sleek fully-enclosed square pelmet headbox in premium extruded aluminium, eZIP® is the compliment to modern linear design trends.


 **SUN & UV PROTECTION**  
Protection all year round

 **WIND RESISTANT**  
Peace-of-mind performance


 **HEAVY WEIGHT**  
Designed to perform. 25% heavier than most products


 **GLARE BLOCKING**  
Enjoy the view

 **INSECT BLOCKING**  
Enjoy your environment

 **SUPER STRONG**  
Built-in patented strength

 **COASTAL APPROVED**  
Sea breeze safe

 **PRIVACY**  
Bring the outdoors in

 **AUSTRALIAN QUALITY**  
Owned, designed and made in Australia

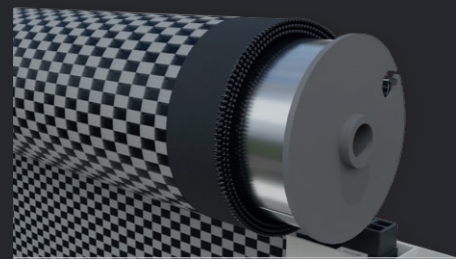


**eZIP®**  
track blind



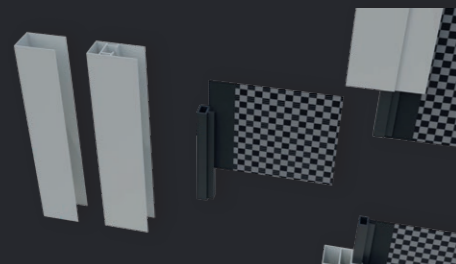
## Why **eZIP**®?

Scan here to see these features in more detail



### FABRIC LAY FLAT TECHNOLOGY

- Self lubricating polymer zip designed for problem-free blind rolling with minimal fabric distortion



### eZIP® MOTION TECHNOLOGY

- Floating side channel with fully concealed side retention for ultimate performance and protection



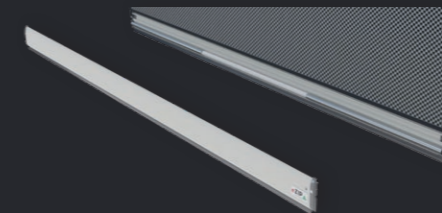
### ADJUSTABLE SIDE CHANNEL

- Unique patented multi-direction tension adjustment for consistent blind alignment and problem-free installation



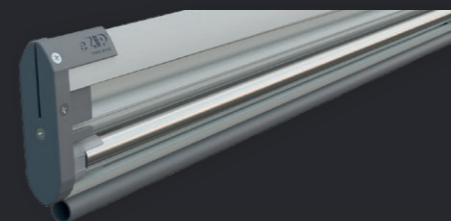
### FULLY ENCLOSED RETENTION SYSTEM

- Blind fabric retention with no visible tapes or welds to protect it from even the harshest elements (eZIP® Maxi only)



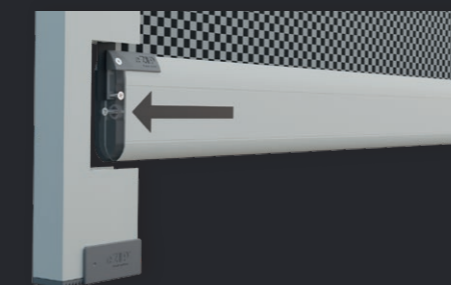
### EVENLY WEIGHTED BOTTOM RAIL

- Optimal down force fabric tension for smooth blind rolling motion



### SUSPENDED STEEL WEIGHT

- Steel rods anchored to each end of bottom rail for even weight distribution
- Specially designed sound absorbing weight plug ends to assist water drainage



### BOTTOM RAIL END CAPS

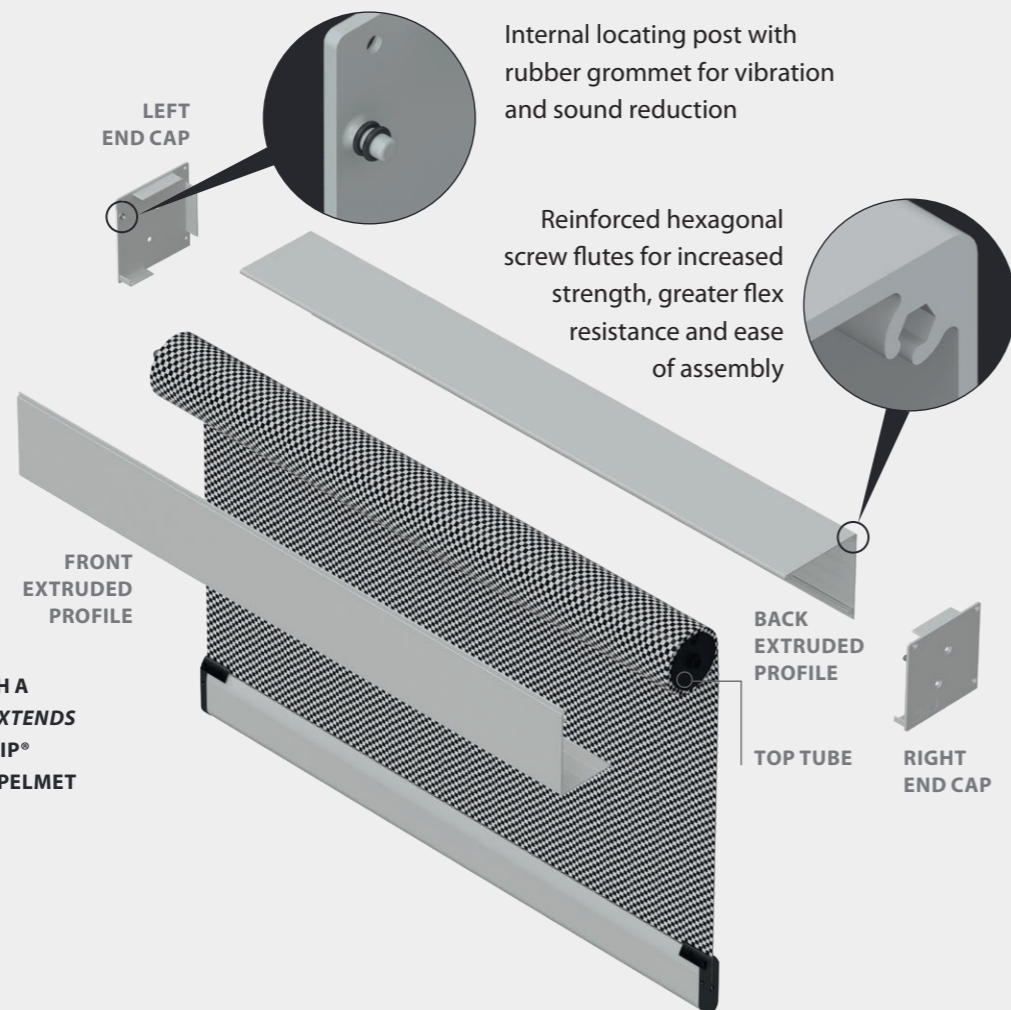
- Fabric anchored to mid point of rail with reinforced fixing points for additional tear strength

For optimal performance,  
pair **eZIP**® with:

## Extruded aluminium pelmet

- Fully enclosed sleek and slim pelmet headbox in premium extruded aluminium
- With thick reinforced end caps, eZIP® track blinds compliment modern linear design trends

eZIP® TRACK BLINDS ARE BACKED WITH A STANDARD 5 YEAR WARRANTY THAT EXTENDS TO 10 YEARS WHEN FITTED WITH AN eZIP® TRACK BLIND EXTRUDED ALUMINIUM PELMET



## Bearing idler

- Smooth friction-free running
- Sound absorbing technology with no spin vibration from pivot pin
- Pivot pins wont turn in bracket under load, reducing wear and tear issues



Which **eZIP**® product is right for you?

1

**eZIP**® Standard  
FOR BLIND WIDTHS UP TO 6.0m

2

**eZIP**® Maxi  
FOR BLIND WIDTHS UP TO 7.2m

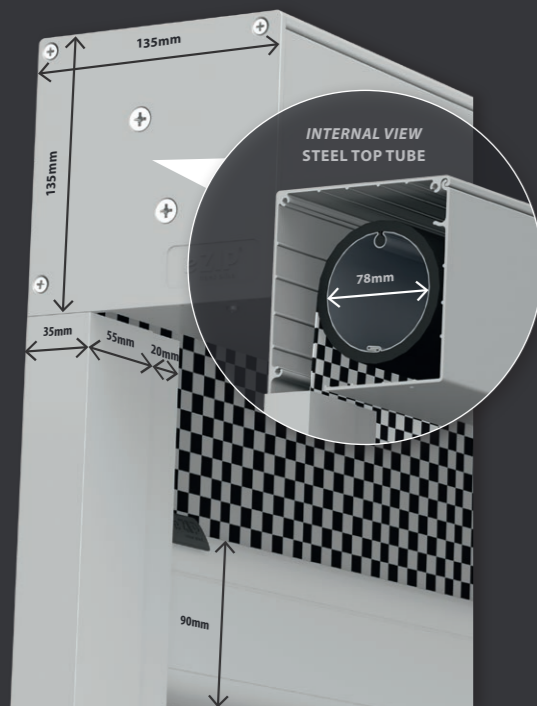


# 1 eZIP<sup>®</sup> Standard

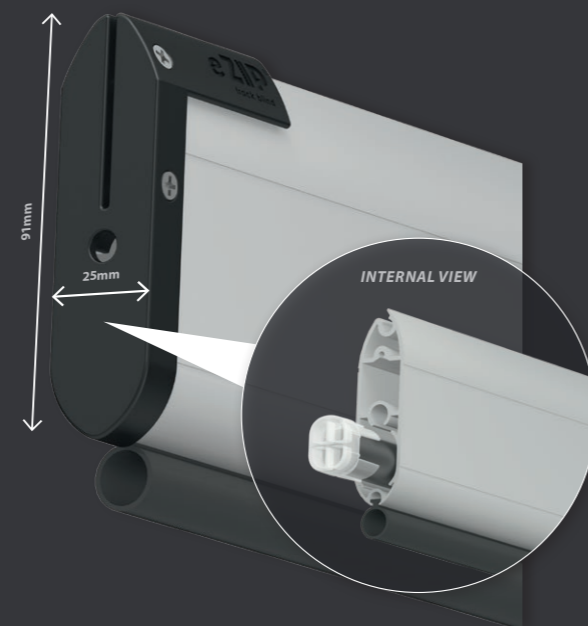
FOR BLIND WIDTHS UP TO 6.0m

# 2 eZIP<sup>®</sup> Maxi

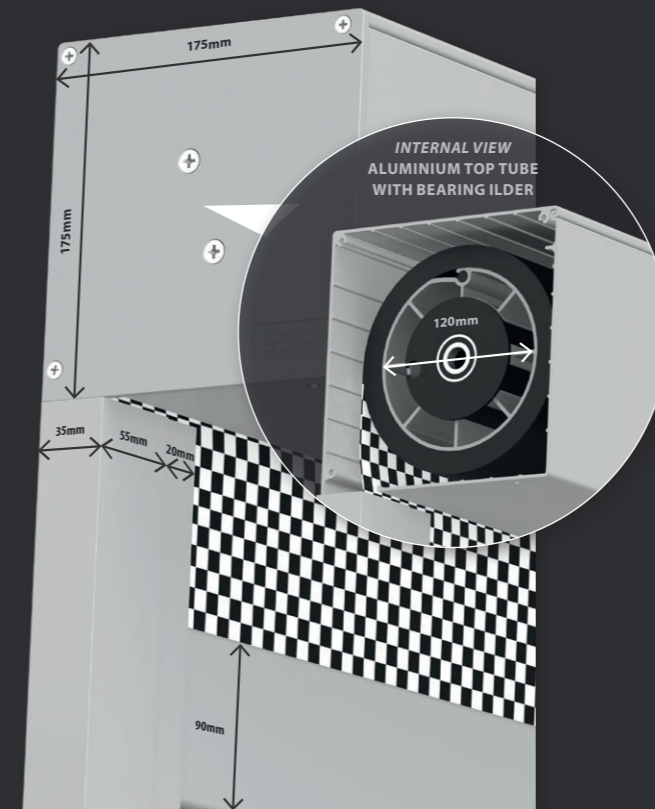
FOR BLIND WIDTHS UP TO 7.2m



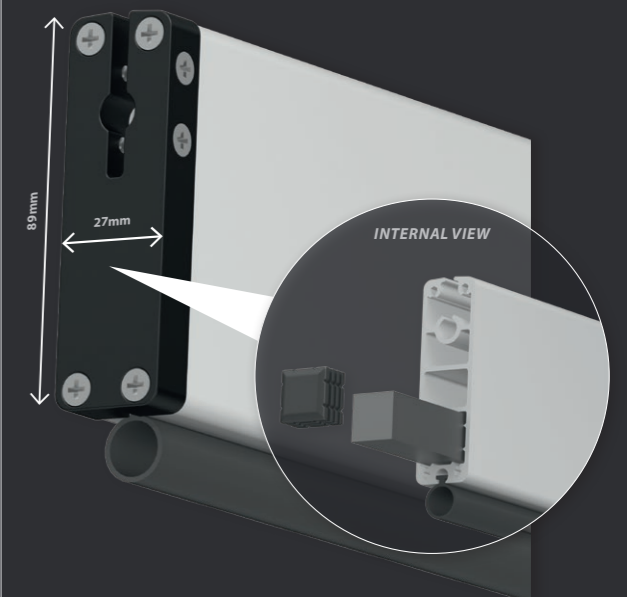
**EXTRUDED ALUMINIUM PELMET**  
135mm x 135mm – WITH STEEL TOP TUBE



**STANDARD BOTTOM RAIL**



**EXTRUDED ALUMINIUM PELMET**  
175mm x 175mm – WITH ALUMINIUM TOP TUBE



**MAXI BOTTOM RAIL\***  
*\*COMING SOON*

	BLIND WIDTH	EXTRUDED ALUMINIUM PELMET	BOTTOM RAIL	BEARING IDLER	BUMPER STRIP HEIGHT	RECOMMENDED CONTROL MECHANISM FOR BLIND WIDTHS:		
						UP TO 4.9m	UP TO 6.0m	UP TO 7.2m
eZIP Standard	Up to 6.0m	135mm x 135mm (WITH STEEL TOP TUBE)	Standard	+	- 60mm - 28mm - 12mm	- Spring - Crank - Motor	- Crank - Motor	-

+ Upgrade option (at additional cost)

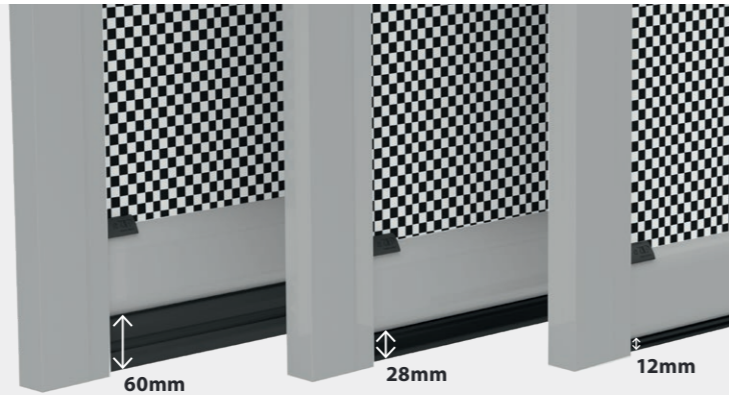
	BLIND WIDTH	EXTRUDED ALUMINIUM PELMET	BOTTOM RAIL	BEARING IDLER	BUMPER STRIP HEIGHT	RECOMMENDED CONTROL MECHANISM FOR BLIND WIDTHS:		
						UP TO 4.9m	UP TO 6.0m	UP TO 7.2m
eZIP Maxi	Up to 7.2m*	175mm x 175mm (WITH ALUMINIUM TOP TUBE)	Maxi	✓	- 60mm - 28mm - 12mm	Motor	Motor	Motor

**\*FOR BLIND WIDTHS GREATER THAN 6.0m eZIP<sup>®</sup> Maxi with Motorisation MUST BE USED**

# eZIP® Options

## Bumper strip

- PU moulded, heat resistance weather seal strip
- Available in three sizes
  - 60mm, 28mm or 12mm (h)

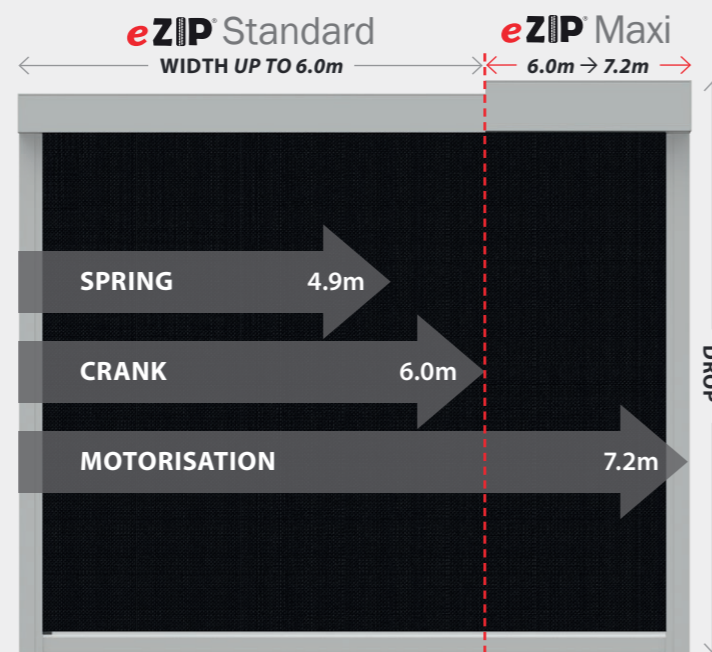


## Controls

- eZIP® track blinds are designed to perform with three different types of control mechanisms
  - Spring assisted tension control, European crank operated gearboxes, or motorisation



RECOMMENDED CONTROLS	BLIND WIDTH	BLIND DROP
SPRING	0.7m → 4.9m	2.7m
CRANK	0.5m → 6.0m	3.5m
MOTORISATION	0.8m → 7.2m	3.5m



**\*FOR BLIND WIDTHS GREATER THAN 6.0m eZIP® Maxi with Motorisation MUST BE USED**

# Automate your living space

What better way to bring the outdoors in than to automate your outdoor blind system.

eZIP® heavy duty aluminium extrusions are purpose engineered to work with all leading tubular motor systems.

Paired with the latest technology whether a remote control hand set, your own mobile phone or voice activation via wireless hub technology, eZIP® motorised blinds are the ultimate compliment to your outdoor environment.

Enhance your lifestyle investment with eZIP® track blinds paired with the latest automation technology.





**eZIP**<sup>®</sup>  
track blind



EXTENDED  
**10 YEAR**  
WARRANTY  
Terms & Conditions apply

[eZIP.com.au](http://eZIP.com.au)

YOUR eZIP<sup>®</sup> TRACK BLIND SPECIALIST:

9 Buontempo Road  
Carrum Downs  
VIC Australia 3201  
[info@ezip.com.au](mailto:info@ezip.com.au)  
[australianawning.group](http://australianawning.group)

**AG**  
AUSTRALIAN AWNING GROUP